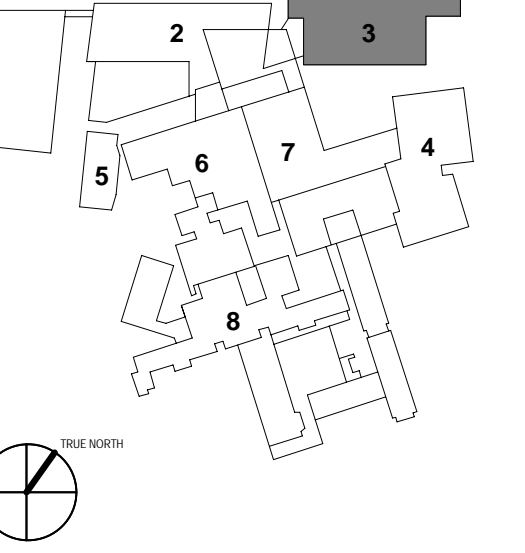
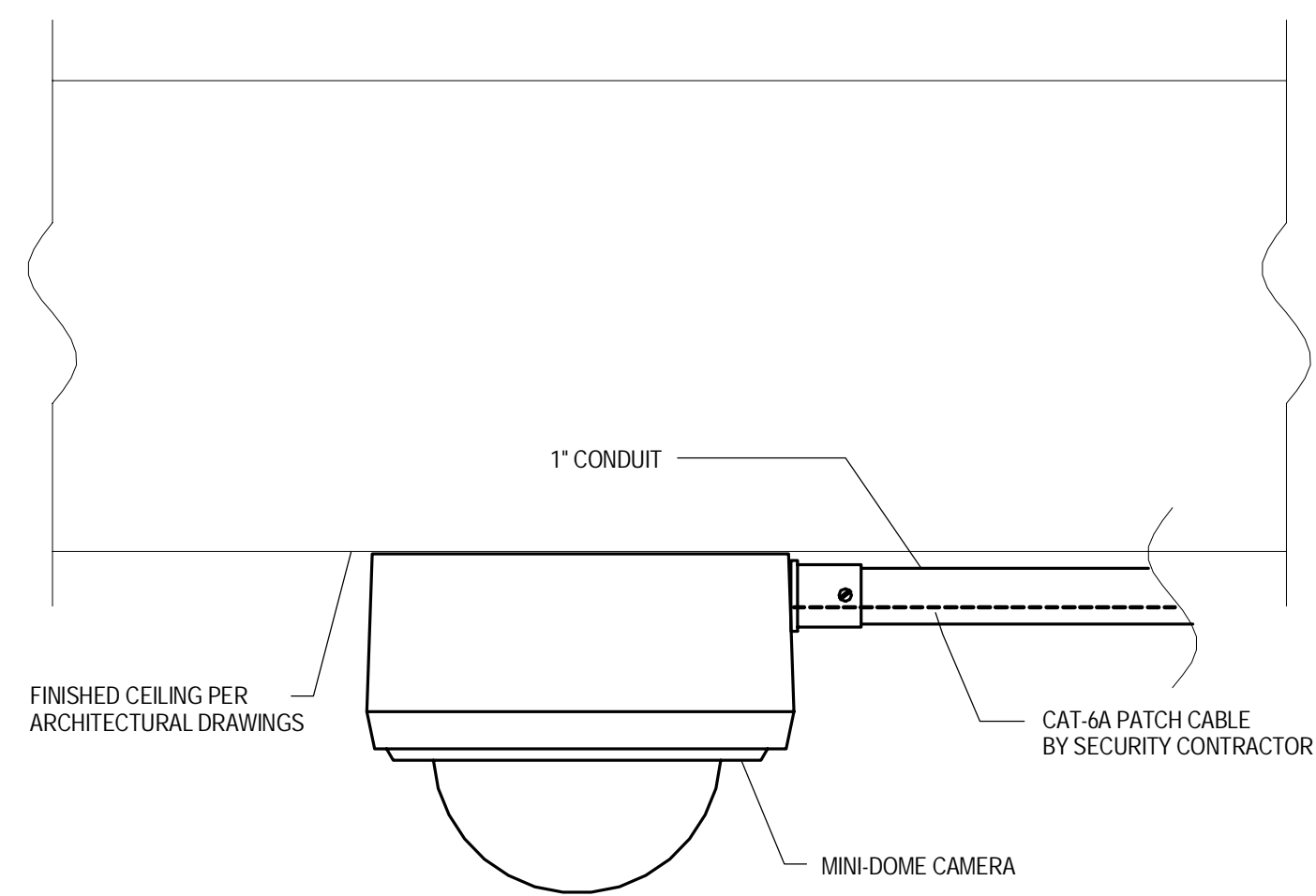


- 1 - NOT USED
- 2 - CONGRESS STREET
- 3 - VISITOR GARAGE
- 4 - EAST TOWER
- 5 - CENTRAL UTILITY PLANT
- 6 - BEAN BUILDING
- 7 - RICHARDS BUILDING
- 8 - MAINE GENERAL BUILDING

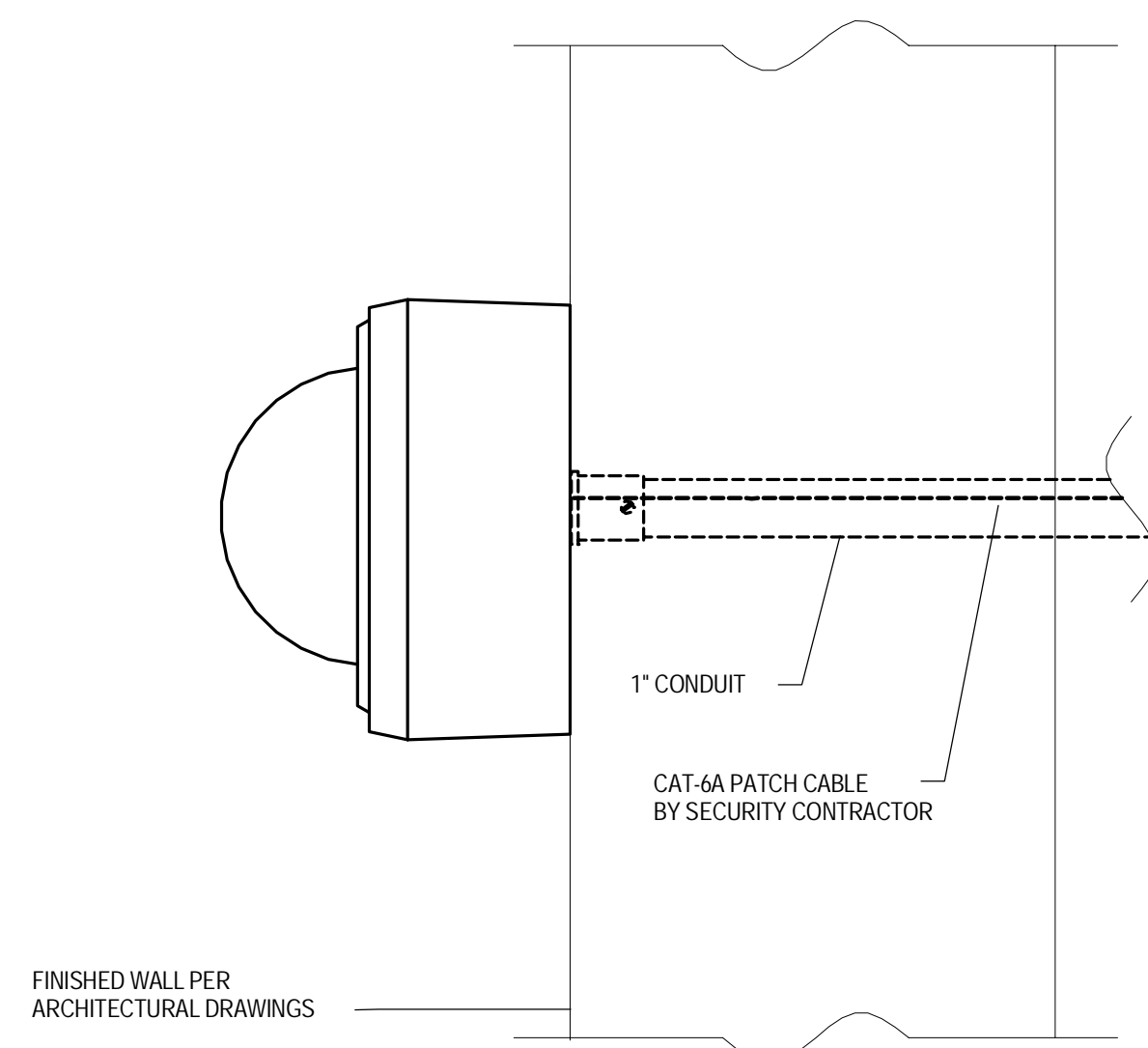


PERMIT SET	03.28.16	
PERMIT SET	03.09.16	
DESIGN DEVELOPMENT	08.25.17	
NO.	ISSUE	DATE
Job Number	B150311-000	
Drawn	NV	
Checked	BN	
Approved	BN	



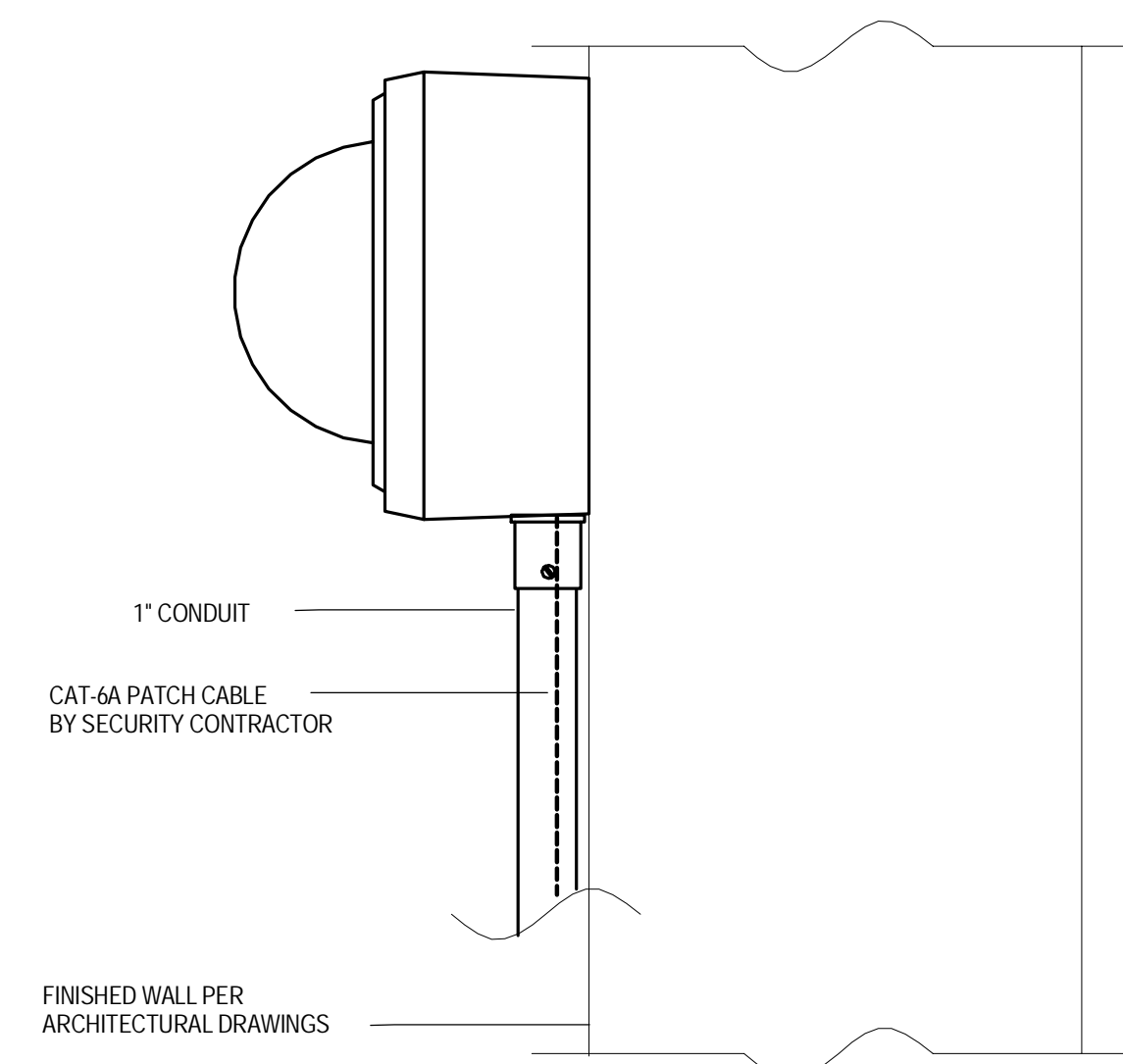
- NOTES:
1. DETAIL REPRESENTS TYPICAL SECURITY REQUIREMENTS
2. SEE THE FLOOR/CEILING PLANS FOR DEVICE LOCATIONS

6 MINI-DOME CAMERA INTERIOR & EXTERIOR CEILING SURFACE MOUNT
SCALE: NTS



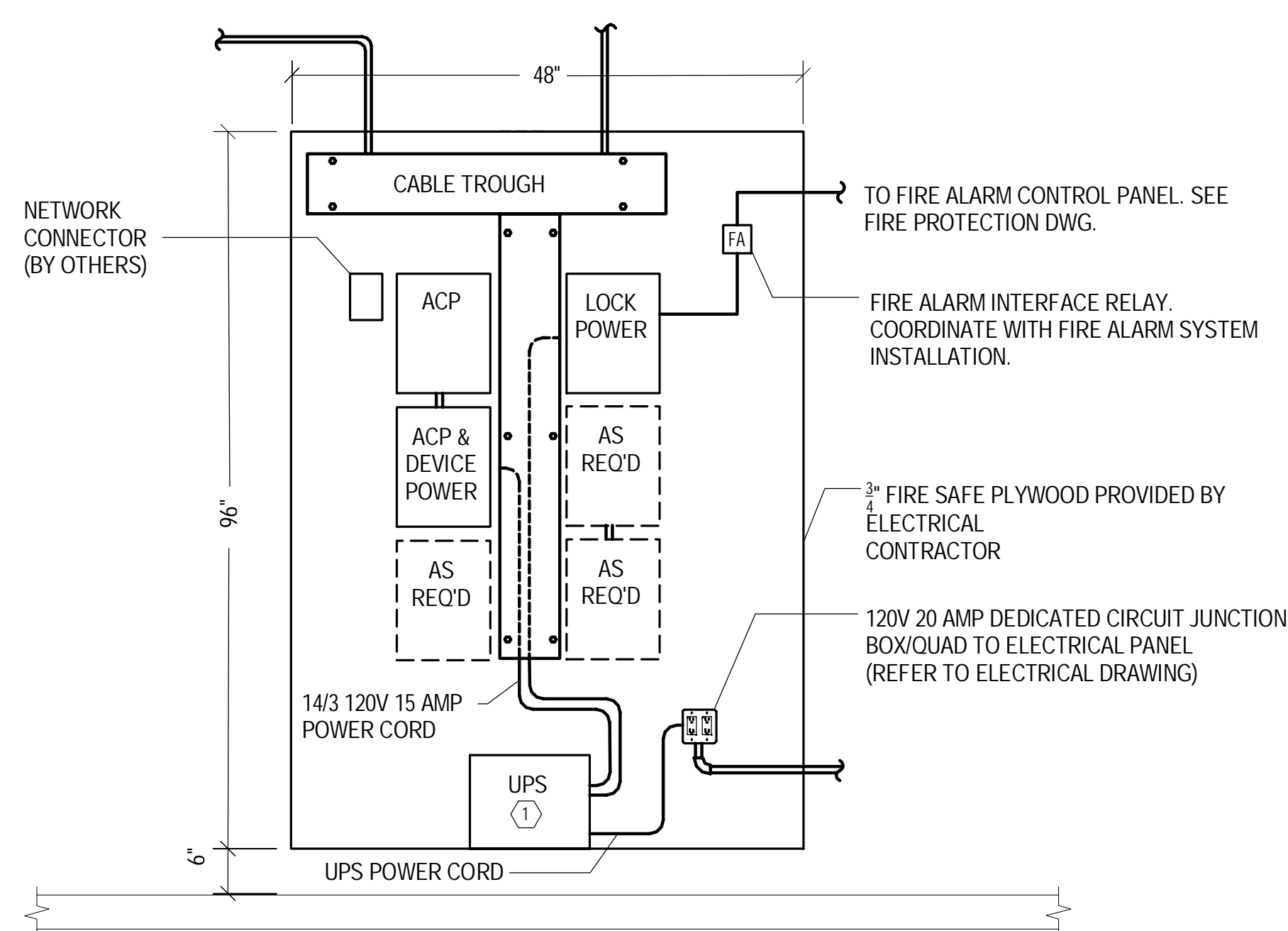
- NOTES:
1. DETAIL REPRESENTS TYPICAL SECURITY REQUIREMENTS
2. SEE THE FLOOR/CEILING PLANS FOR DEVICE LOCATIONS

4 MINI-DOME CAMERA INTERIOR & EXTERIOR WALL SURFACE MOUNT
SCALE: NTS



- NOTES:
1. DETAIL REPRESENTS TYPICAL SECURITY REQUIREMENTS
2. SEE THE FLOOR/CEILING PLANS FOR DEVICE LOCATIONS

2 MINI-DOME CAMERA INTERIOR & EXTERIOR WALL SURFACE MOUNT
SCALE: NTS

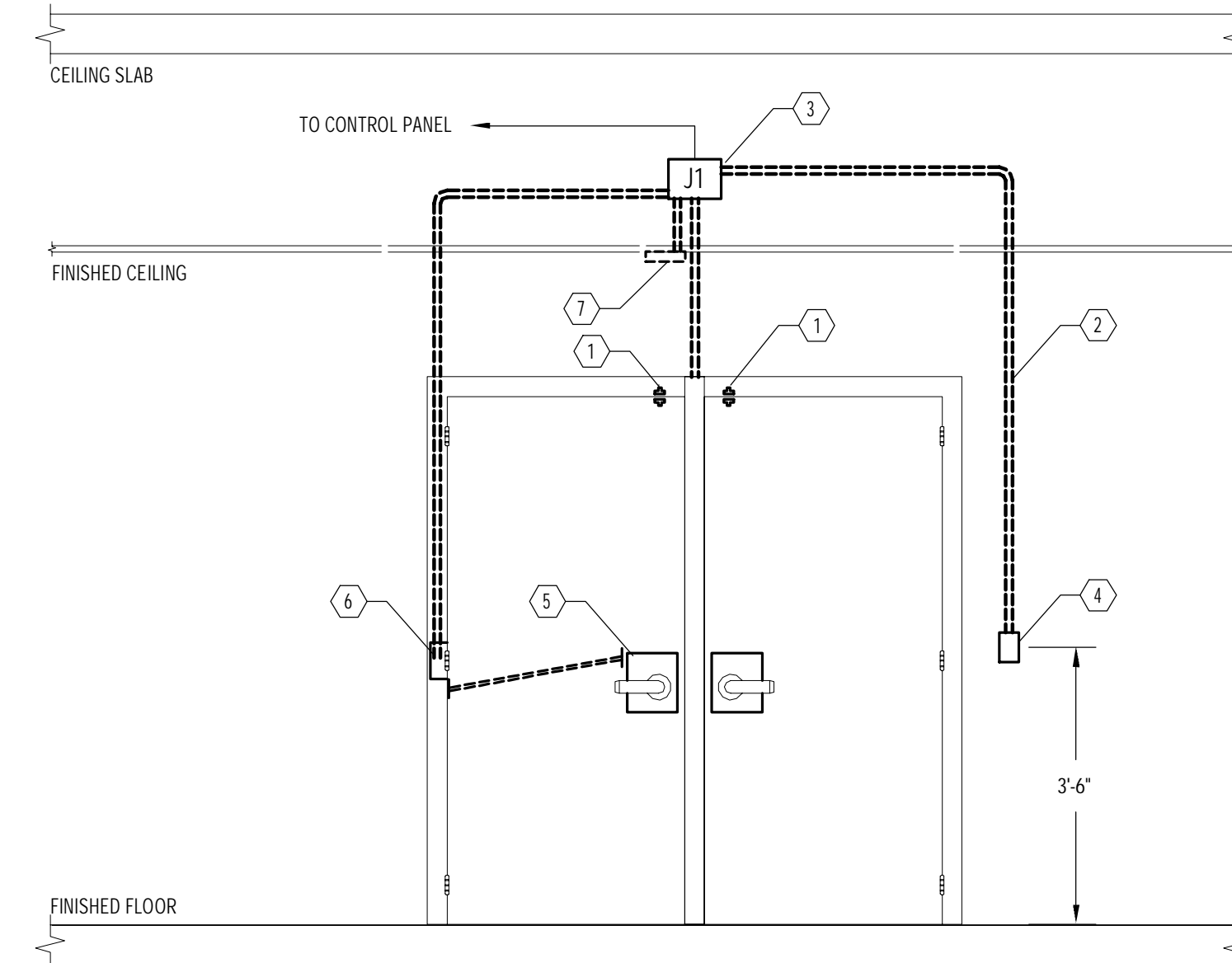


NOTES:

- ① UPS 450 WATTS / 200VA AT 120VAC
- ② APC PART#: BR000G
- ③ OUTPUT CONNECTIONS DEDICATED FOR SECURITY:
- ④ NEMA 5-15R (BATTERY BACKUP)
- ⑤ NEMA 5-15R (SURGE PROTECTION)

UPS TO BE FURNISHED AND INSTALLED BY SECURITY VENDOR.

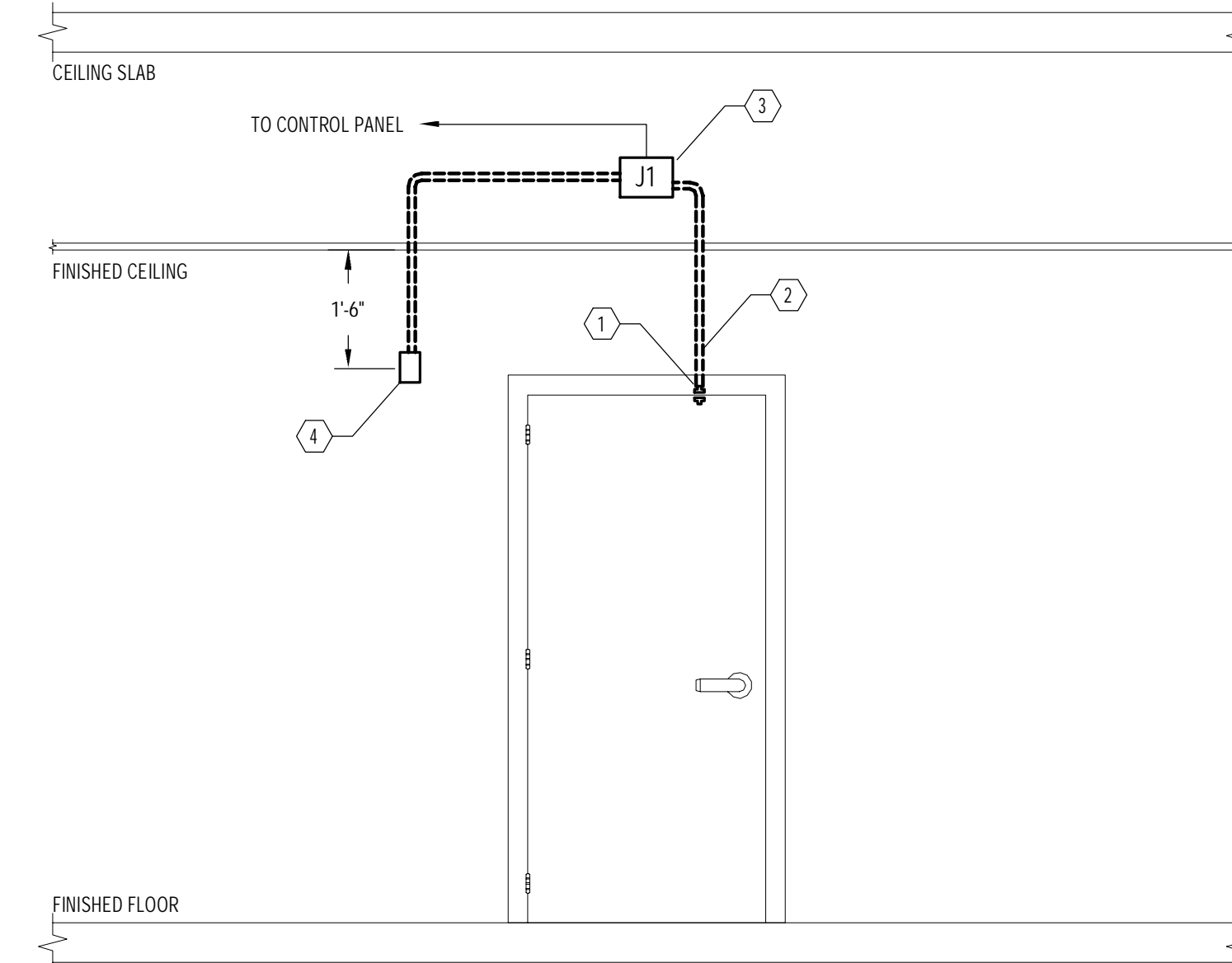
5 ACCESS CONTROL/UPS WALLFIELD ELEVATION VIEW
SCALE: NTS



NOTES:

- ① DOOR CONTACT
- ② STUB 3/4" CONDUIT WITH BRAG LINE (TYPICAL)
- ③ PROVIDE 4" x 4" x 2-1/8" DEEP JUNCTION BOX WITH COVER MOUNTED ABOVE DOOR, ABOVE FINISHED CEILING.
- ④ CARD READER (UNPROTECTED SIDE)
- ⑤ ELECTRIC LOCKSET WIRE REQUEST-TO-EXIT
- ⑥ TRANSFER HINGE (POWER & REQUEST-TO-EXIT)
- ⑦ REQUEST-TO-EXIT MOTION DETECTOR (PROTECTED SIDE)

3 DOUBLE DOOR - ELECTRIC LOCKSET CARD READER IN
SCALE: NTS



NOTES:

- ① DOOR CONTACT
- ② STUB 3/4" CONDUIT WITH BRAG LINE (TYPICAL)
- ③ PROVIDE 4" x 4" x 2-1/8" DEEP JUNCTION BOX WITH COVER MOUNTED ABOVE DOOR, ABOVE FINISHED CEILING.
- ④ LOCAL ALARM (SOUNDER)

1 SINGLE DOOR DOOR CONTACT, LOCAL ALARM
SCALE: NTS