

CONSULTANTS

CIVIL/LANDSCAPE ARCHITECT
Sebago Technics
 75 John Roberts Road, Suite 1A,
 South Portland, ME 04106

STRUCTURAL ENGR. BUILDING ENVELOPE CONSULTANT
Simpson Gumpertz & Heger Inc.
 41 Seay Street, Building 1, Suite 500,
 Waltham MA 02453

MEPP ENGINEER CODE
AKF Group LLC
 99 Bedford Street, 2nd Floor, Boston MA 02111

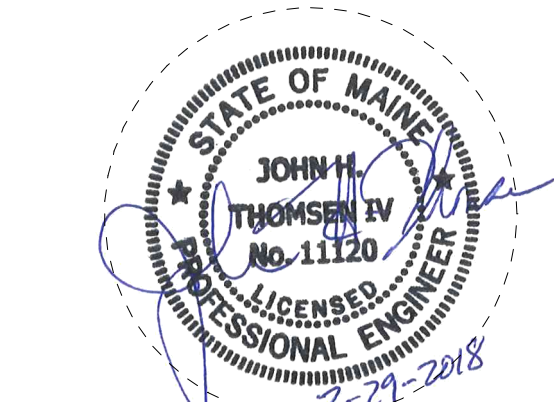
CONSTRUCTION MANAGER
Turner Construction
 2 Seaport Lane, Suite 200, Boston MA 02210

ELEVATOR CONSULTANT
VDA (Van Deusen & Associates)
 101 Summer Street, 4th Floor, Boston MA
 02110

COST ESTIMATOR
D. G. Jones International
 3 Baldwin Green Common, Suite 202, Woburn MA 01801

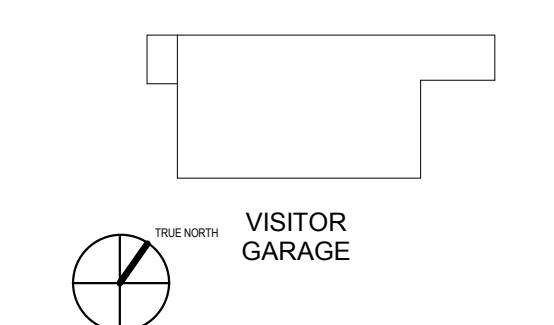
PROJECT TITLE

Visitor Garage Expansion
 22 Bramhall Street
 Portland, ME 04102

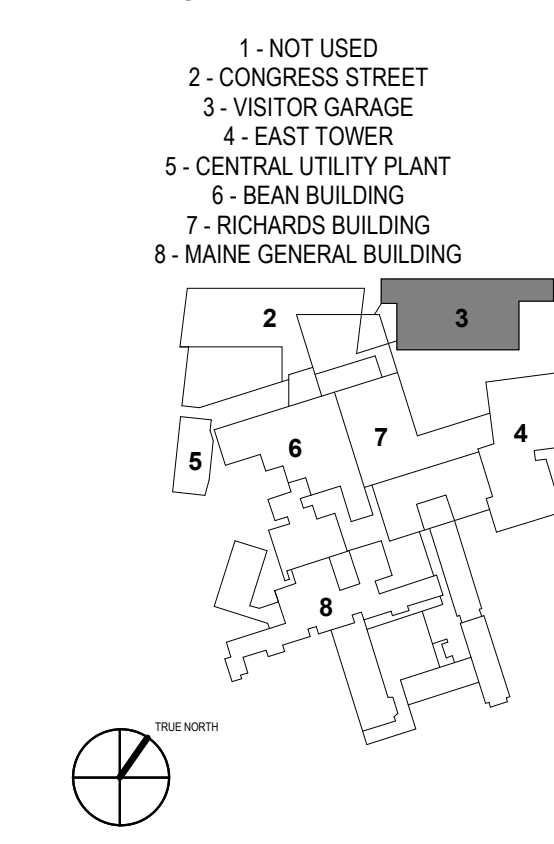


KEY PLANS

PROJECT KEY PLAN



OVERALL KEY PLAN



CONSTRUCTION DOCUMENT SET

SEPTEMBER 29, 2017

NO	ISSUE	DATE
1	PERMIT SET	03.29.16
2	PERMIT SET	03.09.16
NO	ISSUE	DATE

Job Number 152182.000
 Drawn NWS
 Checked BMT
 Approved JHT

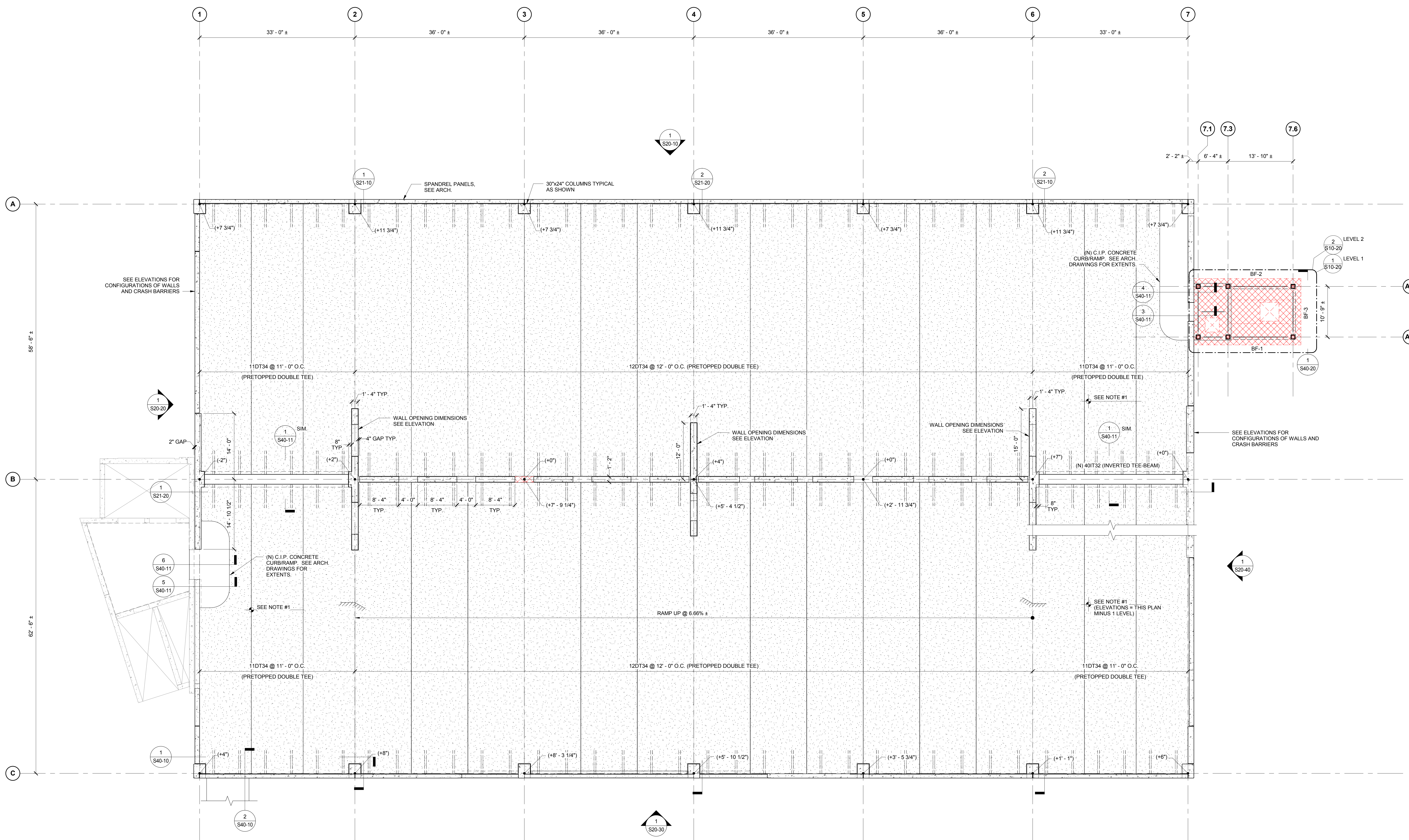
TITLE

FLOOR PLAN - LEVEL 1 AND 2

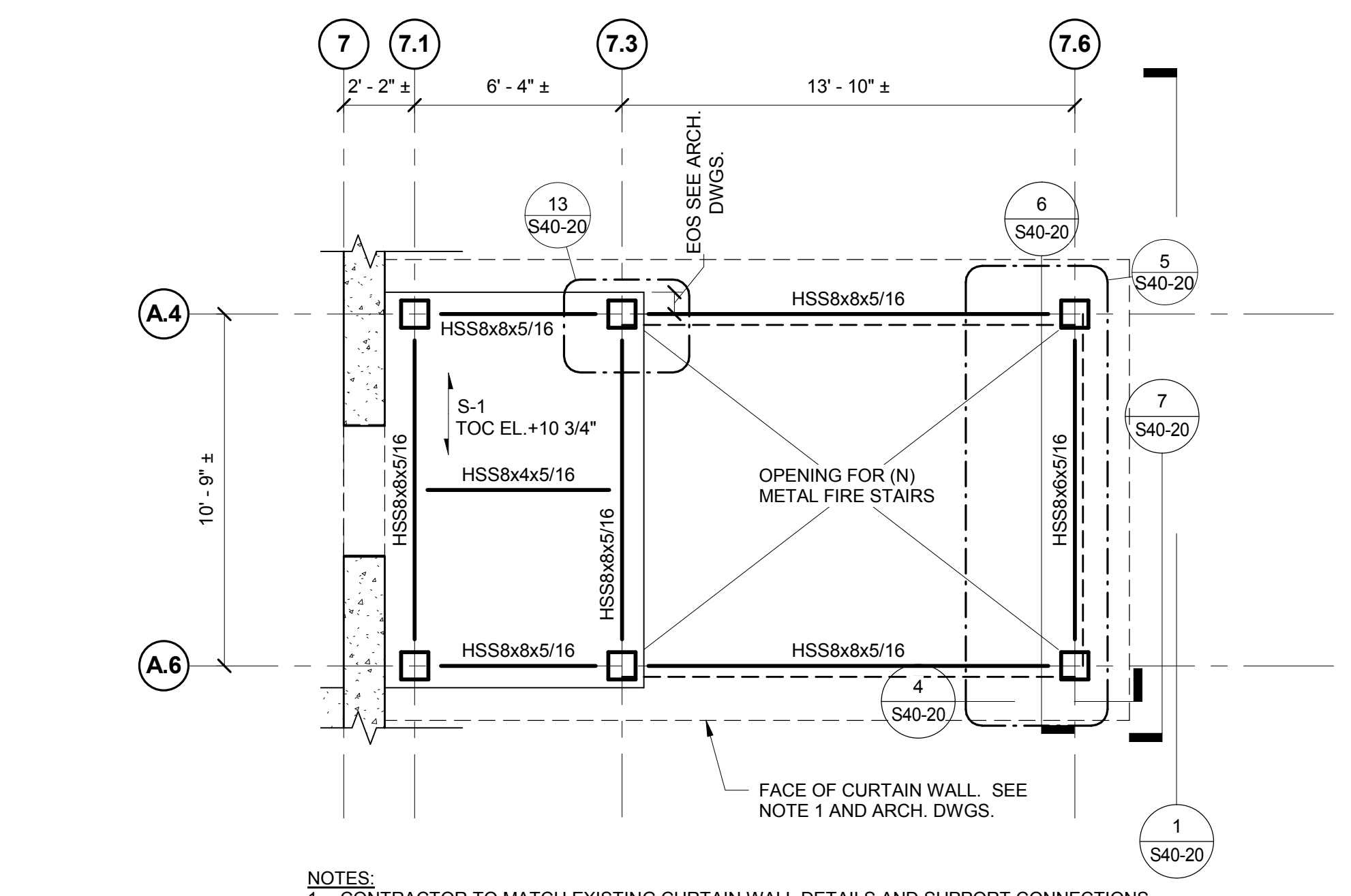
SHEET NUMBER

S10-20

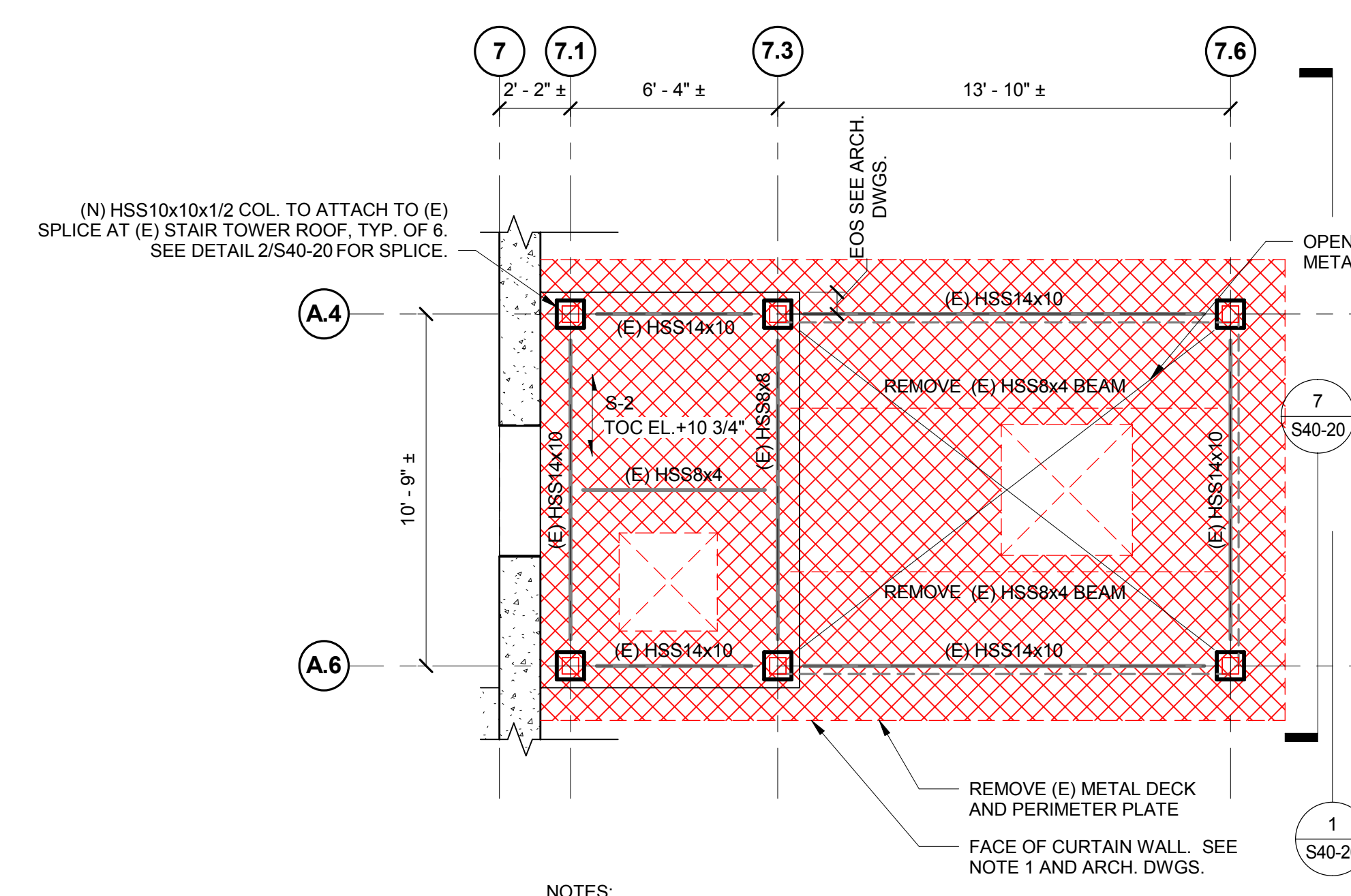
Copyright 2018 @ Perkins + Will



NEW CONSTRUCTION - PRECAST CONCRETE - 1ST AND 2ND LEVELS
 1/8" = 1'-0"



2 EAST STAIR TOWER LEVEL 2 PART PLAN
 1/4" = 1'-0"



1 EAST STAIR TOWER LEVEL 1 PART PLAN
 1/4" = 1'-0"

SLAB NOTE S-1
 3 1/4" THICK LIGHTWEIGHT CONCRETE SLAB ON 3" DEEP 20 GA. COMPOSITE METAL DECK (TOTAL DEPTH = 6 1/4"). REINFORCE WITH #3 @ 15" OC EACH WAY.

SLAB NOTE S-2
 3 1/4" THICK LIGHTWEIGHT CONCRETE SLAB ON 2" DEEP 20 GA. COMPOSITE METAL DECK (TOTAL DEPTH = 5 1/4"). REINFORCE WITH #3 @ 15" OC EACH WAY.

NOTES:
 1. NORMAL GARAGE FLOOR TOC ELEVATIONS, TO BE FIELD VERIFIED BY CONTRACTOR:
 (E) SUB-LEVEL 6: 83' - 5 1/4"
 (E) SUB-LEVEL 5: 80' - 5 1/4"
 (E) SUB-LEVEL 4: 90' - 5 1/4"
 (E) SUB-LEVEL 3: 100' - 5 1/4"
 (E) SUB-LEVEL 2: 110' - 5 1/4"
 (E) SUB-LEVEL 1: 122' - 5 1/4"
 (E) BASEMENT LEVEL: 133' - 5 1/4"
 (E)N) GROUND FLOOR LEVEL: 145' - 5 1/4"
 (N) FUTURE 1ST FLOOR LEVEL: 153' - 5 1/4"
 (N) FUTURE 2ND FLOOR LEVEL: 163' - 5 1/4"
 (N) FUTURE 3RD FLOOR / ROOF LEVEL: 173' - 5 1/4"

3/29/2018 10:11:57 AM
 I:\2018\152182\152182-00-MAC\2D\Drawings\Perkins_Site_Rev1.dwg LOCAL_USER\$NWS\sumner\152182-00-MAC\VISITOR GARAGE\2017-STRUCT_Misc\sumner.dwg