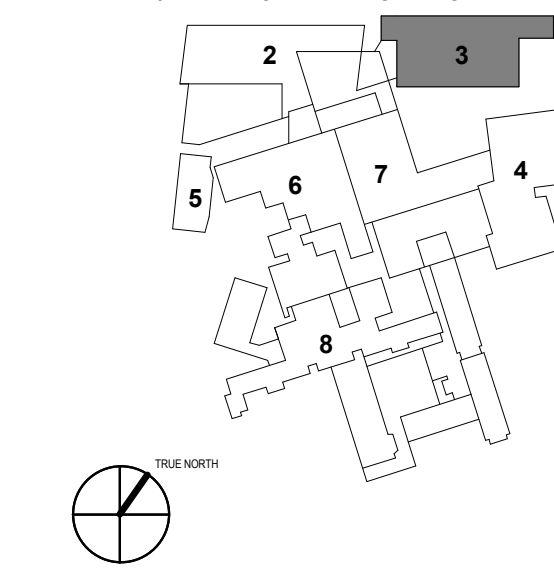


- 1 - NOT USED
- 2 - CONGRESS STREET
- 3 - VISITOR GARAGE
- 4 - EAST TOWER
- 5 - CENTRAL UTILITY PLANT
- 6 - ISAN BUILDING
- 7 - RICHARDS BUILDING
- 8 - MAINE GENERAL BUILDING



PERMIT SET	03.29.18	
PERMIT SET	03.09.18	
NO.	ISSUE	DATE
Job Number	152182.000	
Drawn	KAK	
Checked	BMT	
Approved	JHT	

ZONE KEY:

ZONE 1	
ZONE 2	
ZONE 3	
ZONE 4	
ZONE 5	

a = 3'-0" TYP.

COMPONENTS AND CLADDING PRESSURE AND SUCTION NOTES:

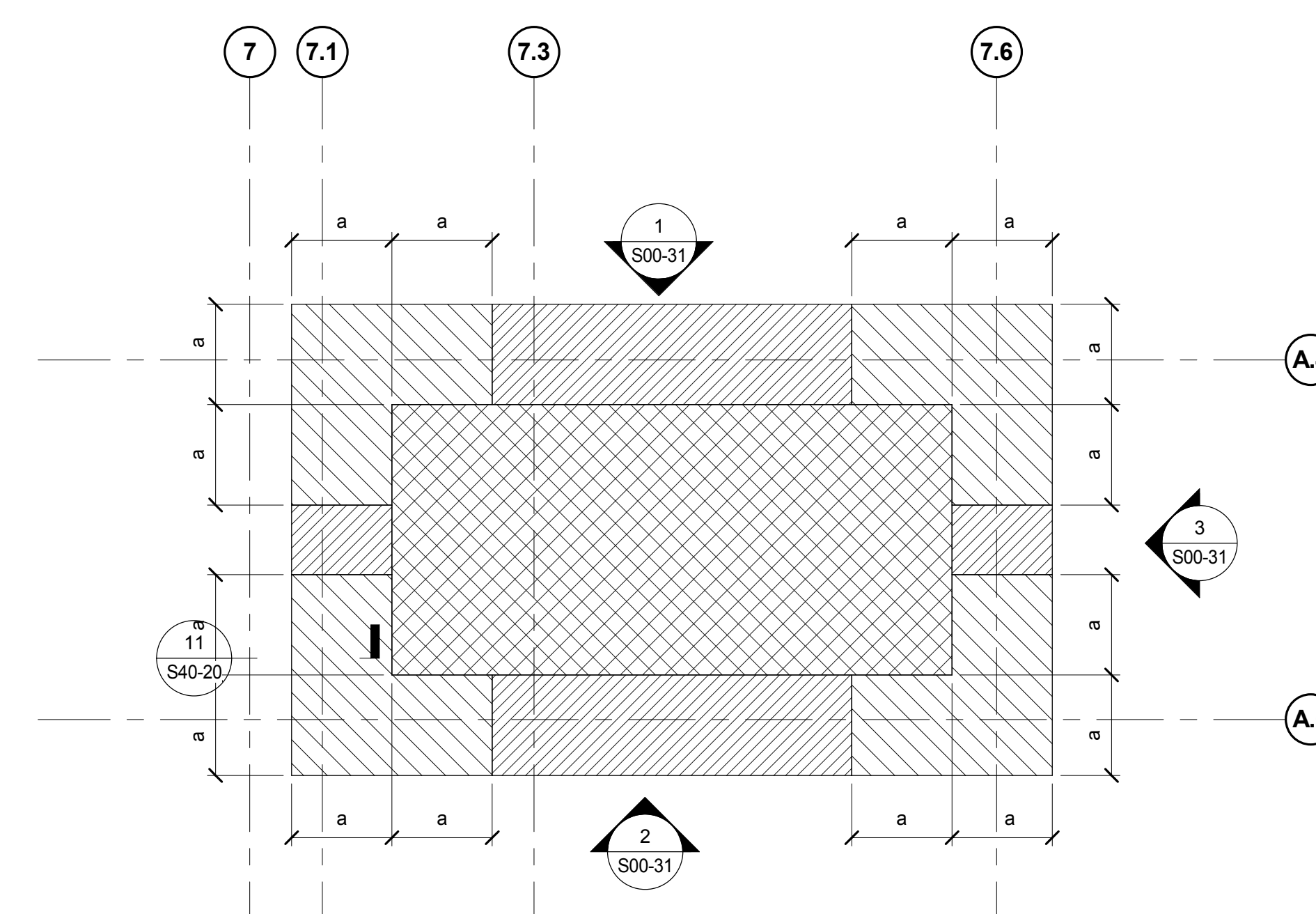
- COMPONENT AND CLADDING WIND CRITERIA IS BASED ON FM GLOBAL REQUIREMENTS FOR THE PROJECT REFERENCED IN FM GLOBAL PROPERTY LOSS PREVENTION DATA SHEETS 1-28 - WIND DESIGN
- WIND LOAD PARAMETERS:
 A. BASIC STRENGTH DESIGN WIND SPEED (3 SECOND GUST), V_{max} 130 MPH (RISK CATEGORY IV)
 B. WIND EXPOSURE C
 C. INTERNAL PRESSURE COEFFICIENT ± 0.18
- WIND PRESSURES AND SUCTIONS SHOWN HERE ARE FOR STRENGTH DESIGN
- FOR DEFLECTION DESIGN, IN ACCORDANCE WITH IBC 2015 TABLE 1604.3, STRENGTH DESIGN WIND PRESSURES AND SUCTIONS MAY BE SCALED BY 0.42.
- WIND PRESSURES AND SUCTIONS ON COMPONENTS AND CLADDING ELEMENTS WITH AFFECTIVE AREAS OTHER THAN SHOWN HERE MAY NOT BE LINEARLY INTERPOLATED FROM THE VALUES SHOWN HERE. FOR AFFECTIVE AREAS BETWEEN THOSE SHOWN, USE THE HIGHER PRESSURE VALUE. SEE ASC10 FOR ADDITIONAL INFORMATION.

TABLE R1 - EAST STAIR TOWER ROOF PRESSURES

AREA	ZONE 1		ZONE 2		ZONE 3	
	SUCTION (PSF)	PRESSURE (PSF)	SUCTION (PSF)	PRESSURE (PSF)	SUCTION (PSF)	PRESSURE (PSF)
110 SF	-86.5	19.2	-135.8	19.2	-185.1	19.2
60 SF	-74	19.2	-118.2	19.2	-162.5	19.2
100 SF	-70.4	19.2	-113.2	19.2	-156.1	19.2

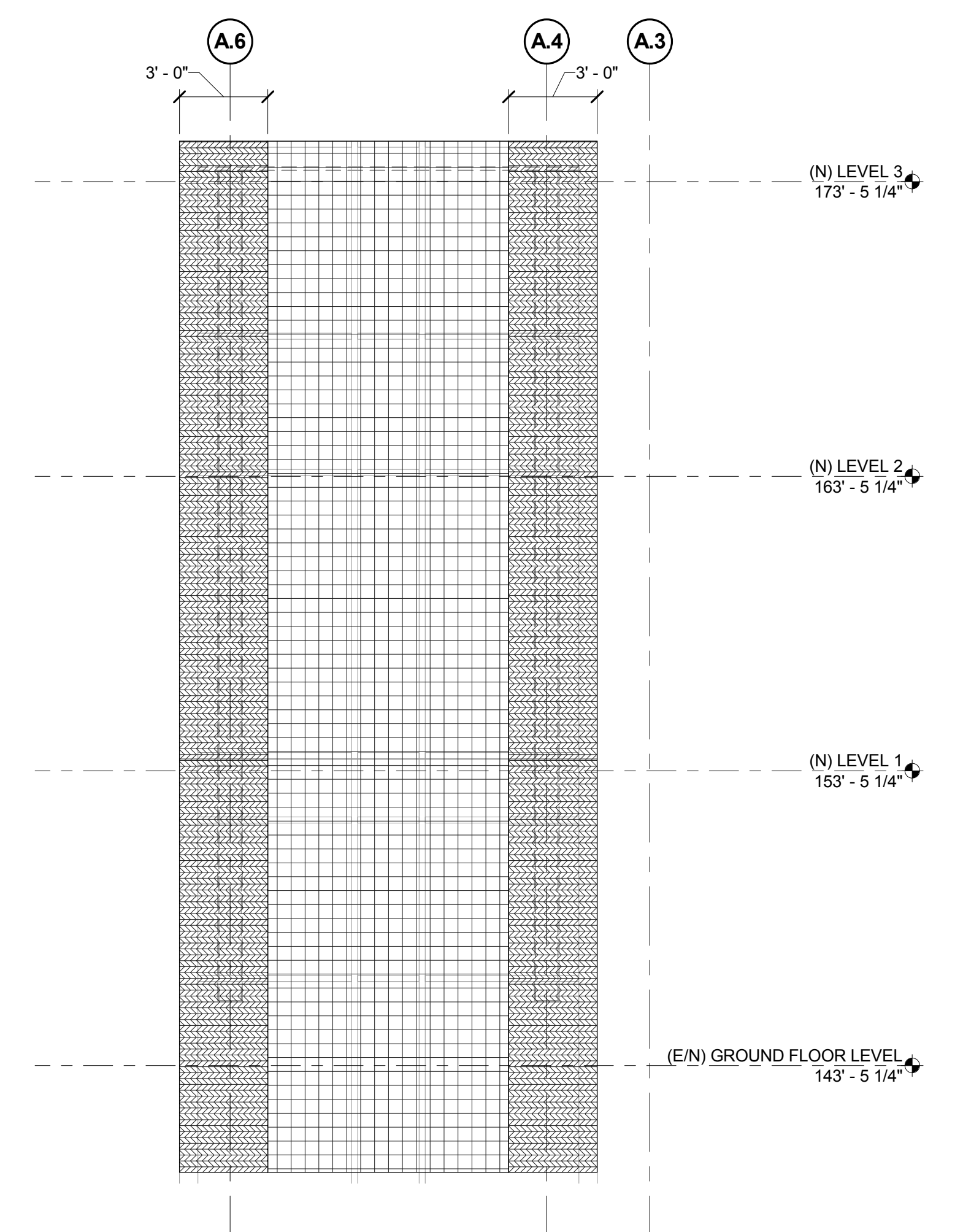
TABLE A - EAST STAIR TOWER WALL PRESSURES

LEVEL	HEIGHT ABOVE GRADE z (FT)	ZONE 4						ZONE 5					
		PRESSURE (PSF)			SUCTION (PSF)			PRESSURE (PSF)			SUCTION (PSF)		
		≤ 20 SF	60 SF	100 SF	≤ 20 SF	60 SF	100 SF	≤ 20 SF	60 SF	100 SF	≤ 20 SF	60 SF	100 SF
ROOF	91	59.1	53.5	50.9	-59.1	-55.4	-53.7	59.1	53.5	50.9	-108.4	-93.5	-86.5
(N) LEVEL 2	80	57.8	52.4	49.8	-59.1	-55.4	-53.7	57.8	52.4	49.8	-108.4	-93.5	-86.5
(N) LEVEL 1	70	56.5	51.2	48.7	-59.1	-55.4	-53.7	56.5	51.2	48.7	-108.4	-93.5	-86.5
(E/W) GROUND	60	55.0	49.9	47.5	-59.1	-55.4	-53.7	55.0	49.9	47.5	-108.4	-93.5	-86.5

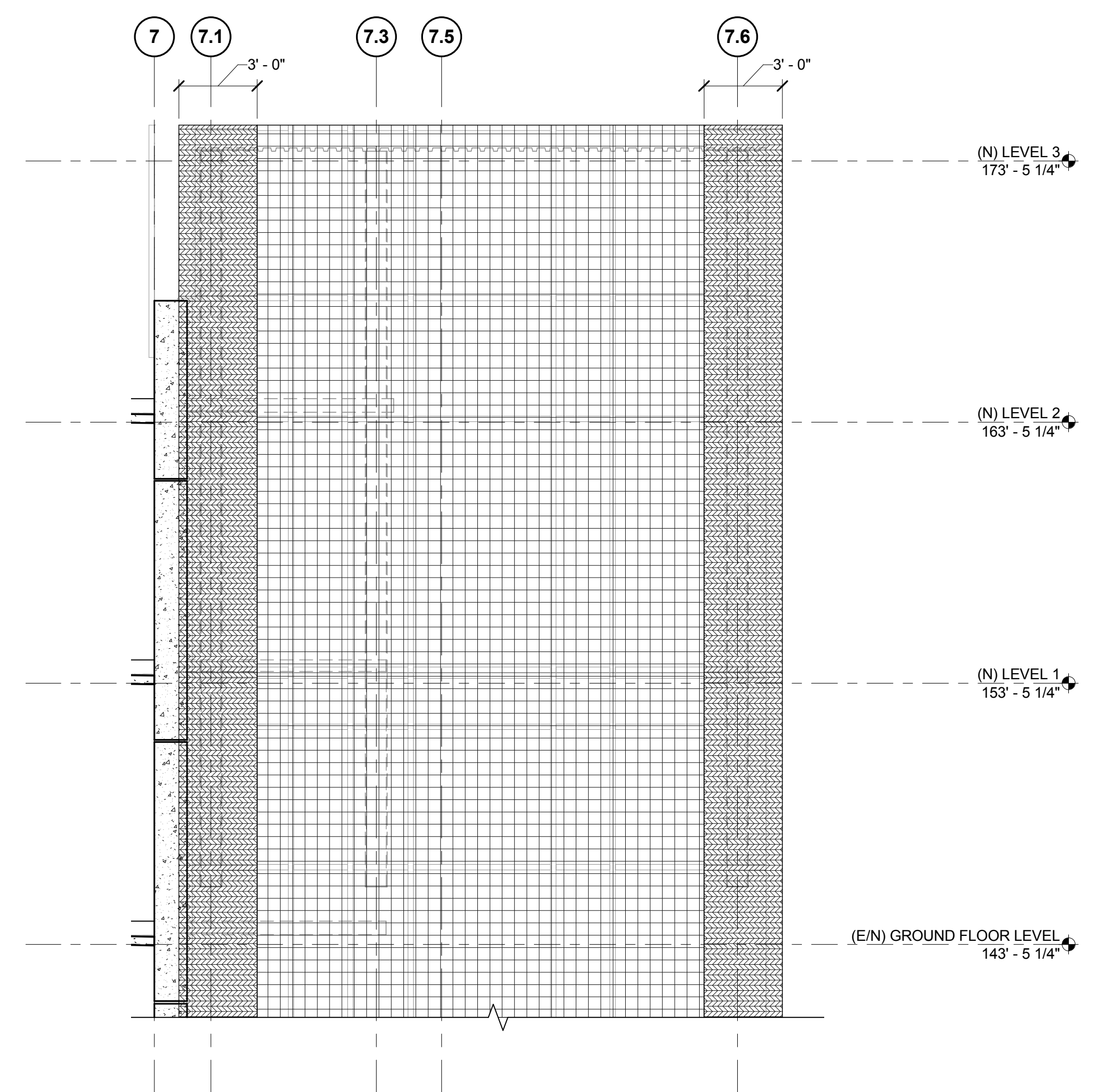


PLAN NOTES:
 1. SEE TABLE R1 FOR ROOF WIND PRESSURES AND SUCTION.

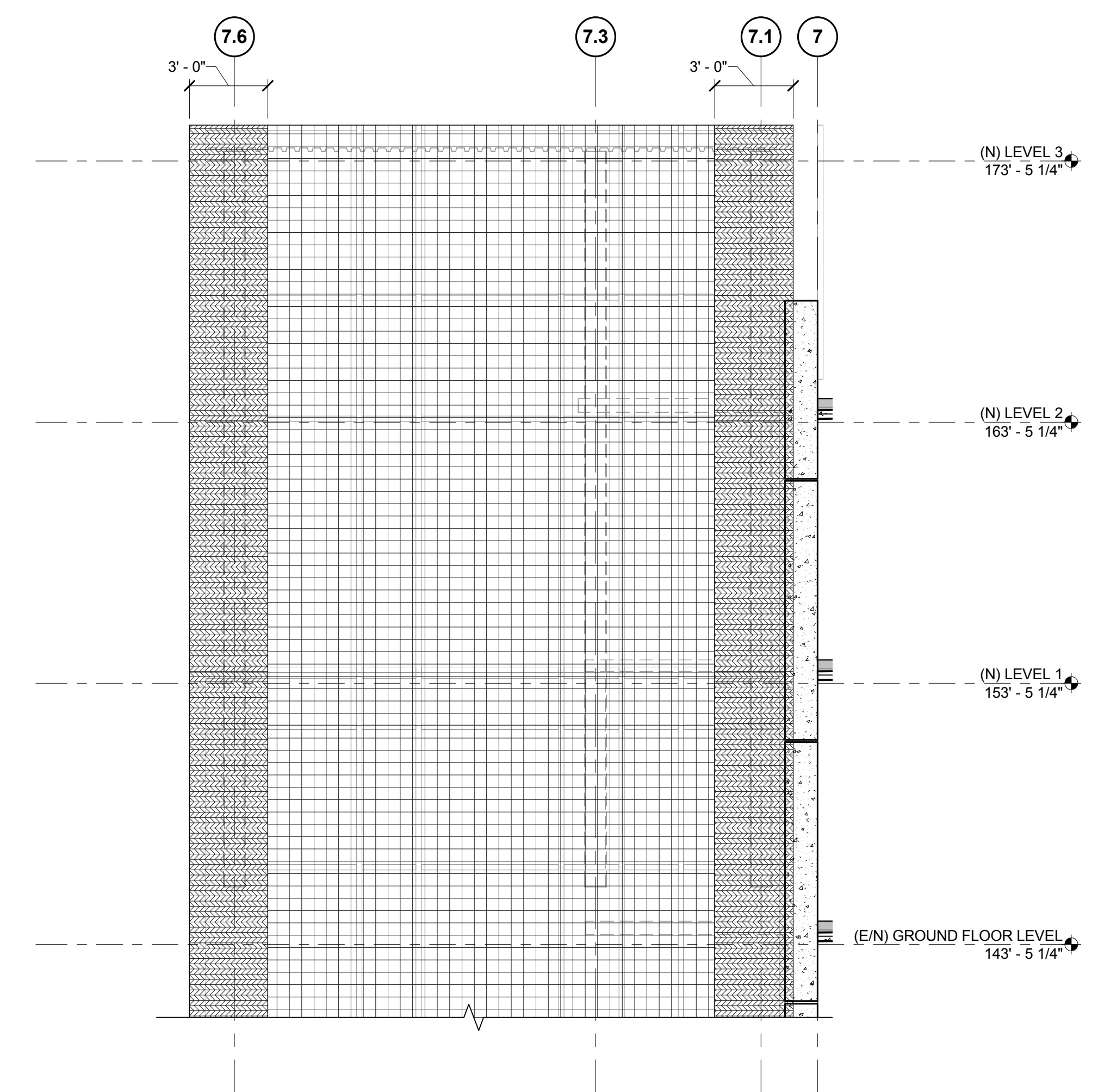
4 EAST STAIR TOWER ROOF
 1/4" = 1'-0"



3 EAST STAIR TOWER EAST ELEVATION
 1/4" = 1'-0"



2 EAST STAIR TOWER SOUTH ELEVATION
 1/4" = 1'-0"



1 EAST STAIR TOWER NORTH ELEVATION
 1/4" = 1'-0"

3/29/2018 10:11:54 AM
 I:\2018\Projects\2017\152182.00\MaineMedicalCenter\152182.00\VISITOR GARAGE\2017 - STRUCT -\WindLoad\WindLoad.dwg