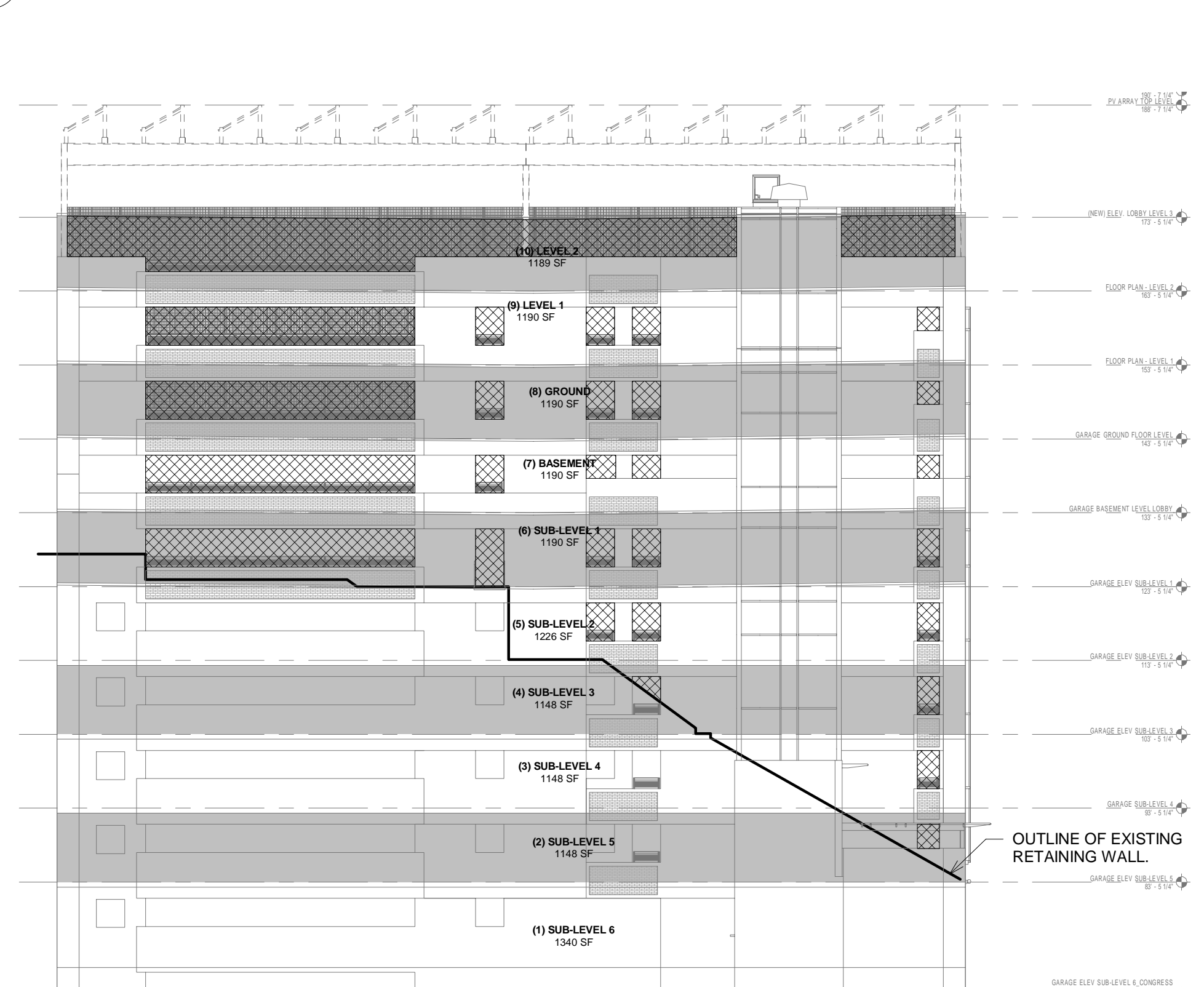


TIER	ELEVATION	WALL AREA (SF)	OPENING AREA (SF)	PERCENT OPENINGS PER IBC	WALL PERIMETER (FT)	OPENINGS PER LF OF PERIMETER (SF / FT) PER NFPA 101	PERCENT OF PERIMETER WITH AT LEAST 1.4 SF/LF OPEN PER NFPA 101
(10) LEVEL 2	EAST	1189	634.01	53%	123.00	5.15	100%
	NORTH	1026	1061.12	55%	212.50	4.99	
	SOUTH	2054	1085.37	53%	212.50	5.11	
	WEST	1187	351.57	30%	123.00	2.86	
	TOTAL	6357	3132.07	49%	671.00	4.67	
(9) LEVEL 1	EAST	1190	258	22%	123.00	2.09	100%
	NORTH	2054	617.5	30%	212.50	2.91	
	SOUTH	2055	953.34	46%	212.50	4.49	
	WEST	1187	224	19%	123.00	1.82	
	TOTAL	6486	2052	32%	671.00	3.06	
(8) GROUND	EAST	1190	258	22%	123.00	2.09	100%
	NORTH	2054	617.5	30%	212.50	2.91	
	SOUTH	2054	952.48	46%	212.50	4.42	
	WEST	1187	228	19%	123.00	1.85	
	TOTAL	6485	2085	32%	671.00	3.11	
(7) BASEMENT	EAST	1190	243	20%	123.00	1.97	100%
	NORTH	2355	787.83	33%	242.50	3.25	
	SOUTH	2087	914.16	44%	212.50	4.30	
	WEST	1187	212	18%	123.00	1.72	
	TOTAL	6819	2157	32%	701.00	3.08	
(6) SUB-LEVEL 1	EAST	1190	273.64	23%	123.00	2.22	100%
	NORTH	2528	1110.83	44%	242.50	4.58	
	SOUTH	2085	940.82	45%	212.50	4.43	
	WEST	1223	227.33	19%	123.00	1.85	
	TOTAL	7026	2552.62	36%	701.00	3.64	
(5) SUB-LEVEL 2	EAST	1226	55.11	4%	123.00	0.45	52%
	NORTH	2280	1110.83	49%	242.50	4.58	
	SOUTH	2000	13.91	1%	212.50	0.07	
	WEST	1148	222.14	19%	123.00	1.81	
	TOTAL	6654	1401.98	21%	701.00	2.00	
(4) SUB-LEVEL 3	EAST	1148	23.48	2%	123.00	0.19	52%
	NORTH	2283	1110.83	49%	242.50	4.58	
	SOUTH	1983	0	0%	212.50	0.00	
	WEST	1148	207.53	18%	123.00	1.49	
	TOTAL	5562	1341.85	24%	701.00	1.91	
(3) SUB-LEVEL 4	EAST	1148	15.5	1%	123.00	0.13	52%
	NORTH	2283	1110.83	49%	242.50	4.58	
	SOUTH	1983	0	0%	212.50	0.00	
	WEST	1148	213.62	19%	123.00	1.74	
	TOTAL	5562	1338.95	24%	701.00	1.91	
(2) SUB-LEVEL 5	EAST	1148	9.94	1%	123.00	0.08	52%
	NORTH	2283	1037.68	46%	242.50	4.28	
	SOUTH	1983	0	0%	212.50	0.00	
	WEST	1148	263.51	23%	123.00	1.69	
	TOTAL	5562	1311.13	20%	701.00	1.79	
(1) SUB-LEVEL 6	EAST	1340	0	0%	123.00	0.00	50%
	NORTH	2811	917.28	33%	226.92	4.04	
	SOUTH	1038	0	0%	168.83	0.00	
	WEST	914	421.99	46%	60.08	7.02	
	TOTAL	6163	1339.27	22%	578.83	2.31	

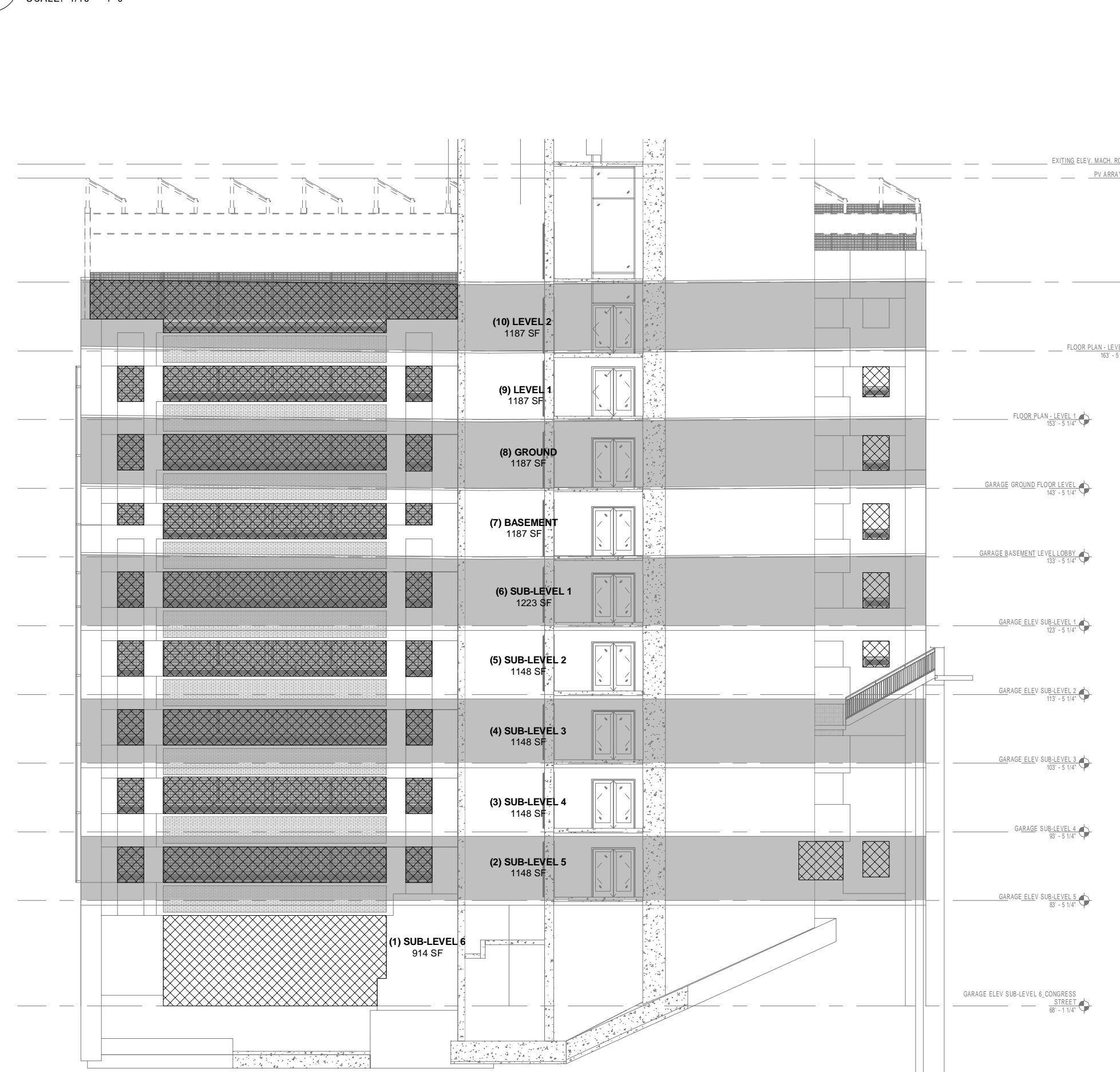
NOTES:
 (1) IBC 406.5.2 REQUIRES THE EXTERIOR WALLS ON EACH TIER TO BE AT LEAST 20% OPEN. ALL OF THE TIERS COMPLY WITH THESE REQUIREMENTS AS INDICATED IN THE TABLE ABOVE.
 (2) SECTION 3.3.254.6 OF NFPA 101 REQUIRES THE EXTERIOR WALLS OF EACH TIER TO HAVE AN OPENING AREA OF AT LEAST 1.4 SF PER LINEAR FOOT OF EXTERIOR PERIMETER. SUCH OPENINGS MUST BE DISTRIBUTED OVER AT LEAST 40% OF THE BUILDING PERIMETER. ALL OF THE TIERS COMPLY WITH THESE REQUIREMENTS AS INDICATED IN THE TABLE ABOVE.

NOTE: SUB-LEVELS THROUGH THE BASEMENT LEVEL HAVE ADDITIONAL OPENINGS ON THE NORTH ELEVATION DUE TO A CUT-BACK IN THE BUILDING FOOTPRINT AT THESE LEVELS. THIS CUT-BACK IS NOT VISIBLE ON THE NORTH ELEVATION DUE TO THE BUILDING GEOMETRY. THE ADDITIONAL EXTERIOR WALL AREA AND OPENING AREA AT THESE LEVELS IS SHOWN ON THE PLAN BELOW.

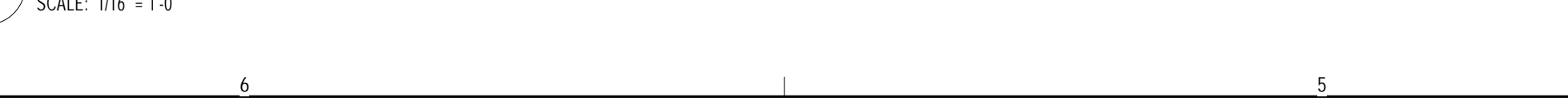
6 PERCENT OPENING SUMMARY



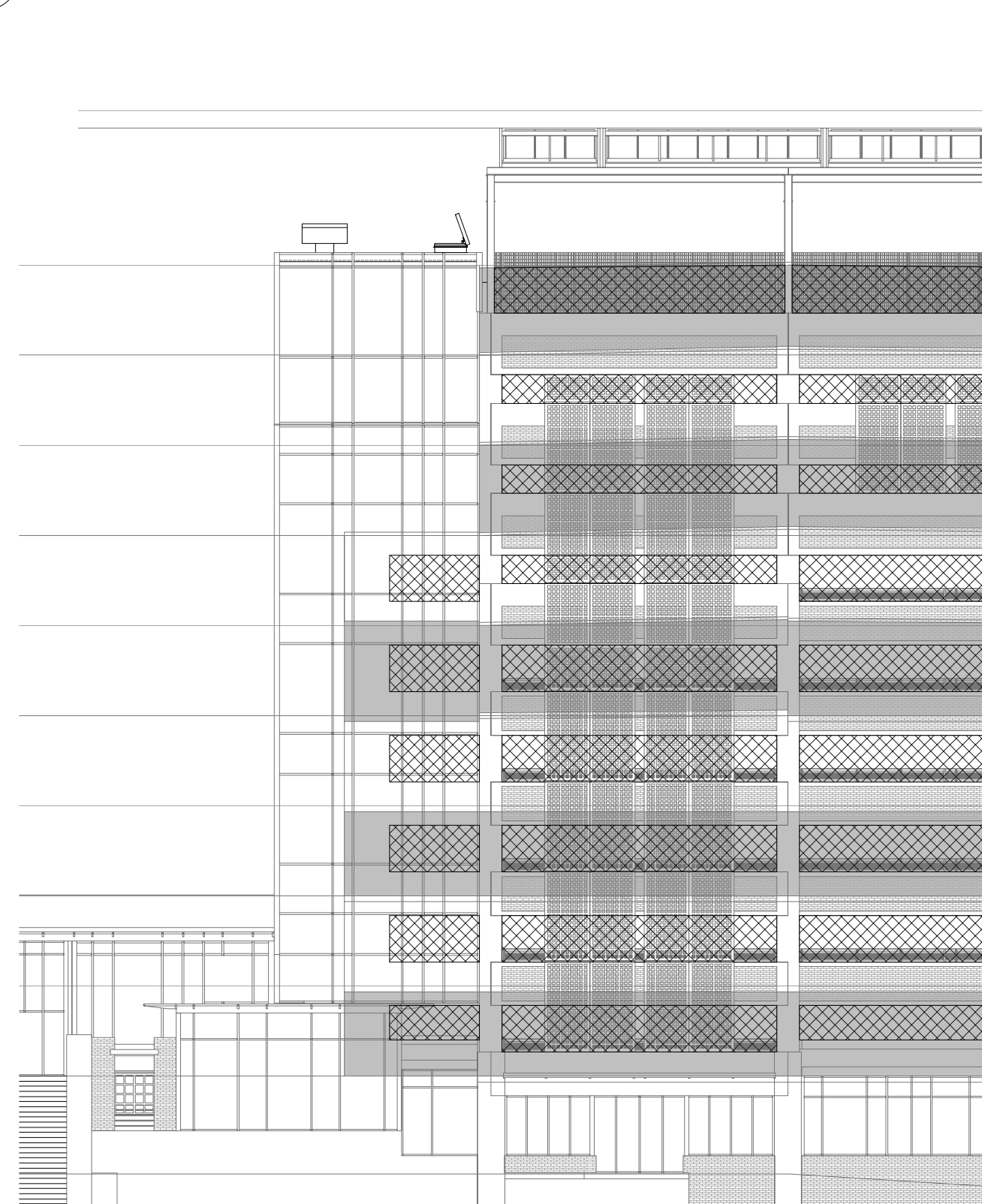
5 EAST ELEVATION



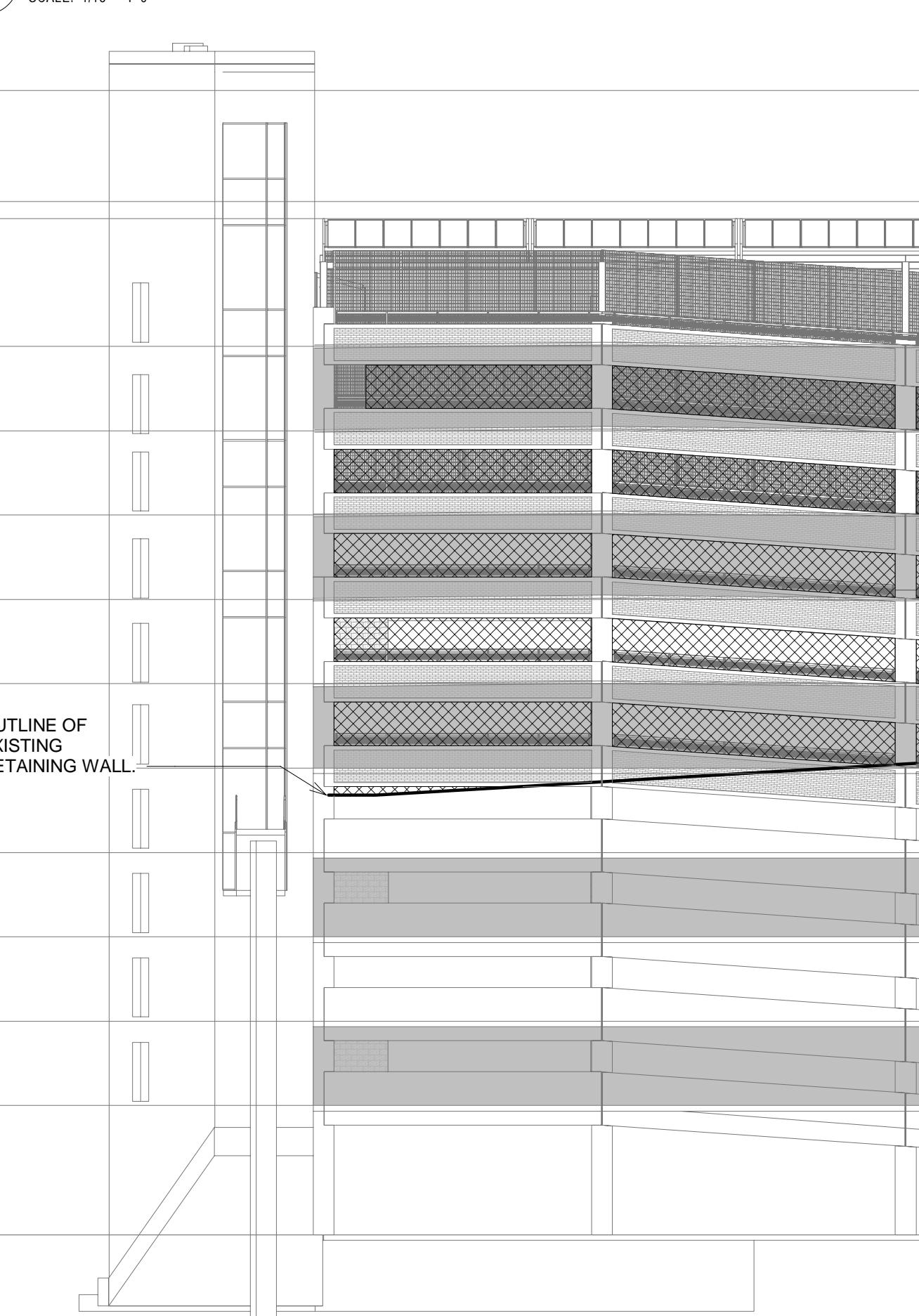
4 WEST ELEVATION



3 CUT-BACK ON SUB-LEVEL 5 THROUGH BASEMENT



2 NORTH ELEVATION



1 SOUTH ELEVATION

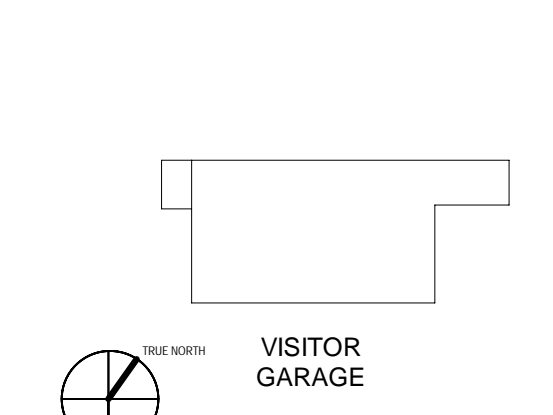
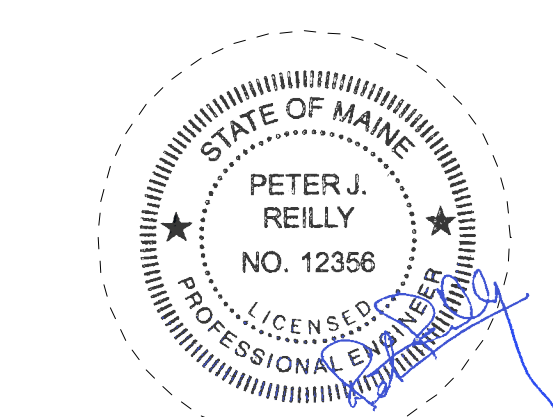


REGION	TOTAL WALL AREA	OPENING AREA	PERCENT OPENINGS
(10) LEVEL 2	1190 SF	634 SF	53%
(9) LEVEL 1	1190 SF	258 SF	22%
(8) GROUND	1190 SF	258 SF	22%
(7) BASEMENT	1190 SF	243 SF	20%
(6) SUB-LEVEL 1	1190 SF	274 SF	23%
(5) SUB-LEVEL 2	1226 SF	55 SF	4%
(4) SUB-LEVEL 3	1148 SF	23 SF	2%
(3) SUB-LEVEL 4	1148 SF	16 SF	1%
(2) SUB-LEVEL 5	1148 SF	10 SF	1%
(1) SUB-LEVEL 6	1340 SF	0 SF	0%

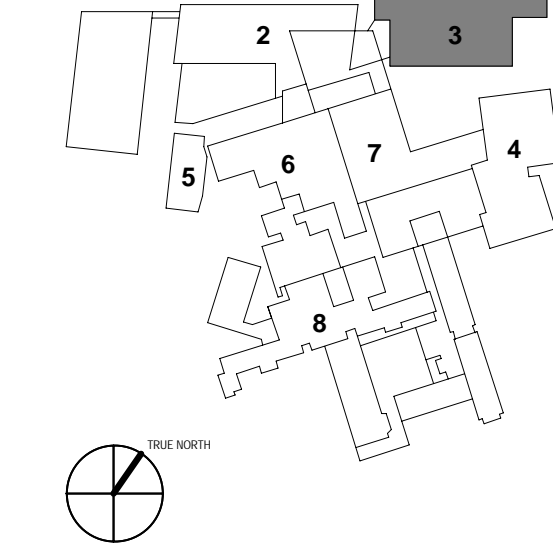
REGION	TOTAL WALL AREA	OPENING AREA	PERCENT OPENINGS
(10) LEVEL 2	1190 SF	1061 SF	55%
(9) LEVEL 1	2054 SF	618 SF	30%
(8) GROUND	2054 SF	618 SF	30%
(7) BASEMENT	2355 SF	787 SF	33%
(6) SUB-LEVEL 1	2528 SF	1111 SF	44%
(5) SUB-LEVEL 2	2280 SF	1111 SF	49%
(4) SUB-LEVEL 3	2283 SF	1111 SF	49%
(3) SUB-LEVEL 4	2283 SF	1111 SF	49%
(2) SUB-LEVEL 5	2283 SF	1038 SF	46%
(1) SUB-LEVEL 6	2811 SF	917 SF	33%

REGION	TOTAL WALL AREA	OPENING AREA	PERCENT OPENINGS
(10) LEVEL 2	1187 SF	352 SF	30%
(9) LEVEL 1	1187 SF	224 SF	19%
(8) GROUND	1187 SF	228 SF	19%
(7) BASEMENT	1187 SF	212 SF	18%
(6) SUB-LEVEL 1	1223 SF	227 SF	19%
(5) SUB-LEVEL 2	1148 SF	221 SF	19%
(4) SUB-LEVEL 3	1148 SF	208 SF	18%
(3) SUB-LEVEL 4	1148 SF	214 SF	19%
(2) SUB-LEVEL 5	1148 SF	264 SF	23%
(1) SUB-LEVEL 6	914 SF	422 SF	46%

REGION	TOTAL WALL AREA	OPENING AREA	PERCENT OPENINGS
(10) LEVEL 2	2055 SF	1085 SF	53%
(9) LEVEL 1	2055 SF	953 SF	46%
(8) GROUND	2054 SF	952 SF	46%
(7) BASEMENT	2087 SF	914 SF	44%
(6) SUB-LEVEL 1	2095 SF	941 SF	45%
(5) SUB-LEVEL 2	2000 SF	14 SF	1%
(4) SUB-LEVEL 3	1983 SF	0 SF	0%
(3) SUB-LEVEL 4	1983 SF	0 SF	0%
(2) SUB-LEVEL 5	1983 SF	0 SF	0%
(1) SUB-LEVEL 6	1038 SF	0 SF	0%



- 1 - NOT USED
- 2 - CONGRESS STREET
- 3 - VISITOR GARAGE
- 4 - EAST TOWER
- 5 - CENTRAL UTILITY PLANT
- 6 - REAR BUILDING
- 7 - RICHARDS BUILDING
- 8 - MAINE GENERAL BUILDING



PERMIT SET	03.28.18	
PERMIT SET	03.09.18	
NO	ISSUE	DATE
Job Number	B150311-000	
Drawn	MMS	
Checked	CMA	
Approved	CMA	