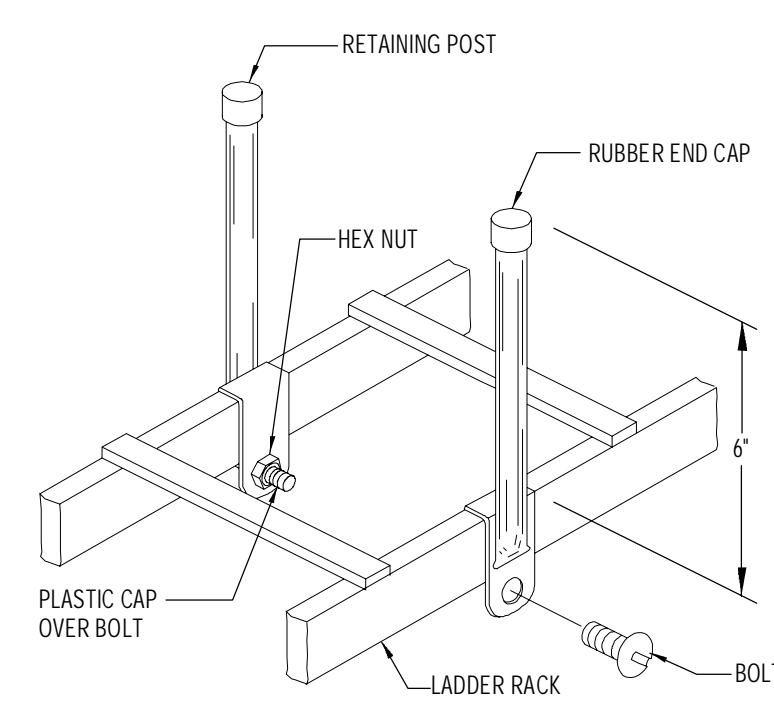
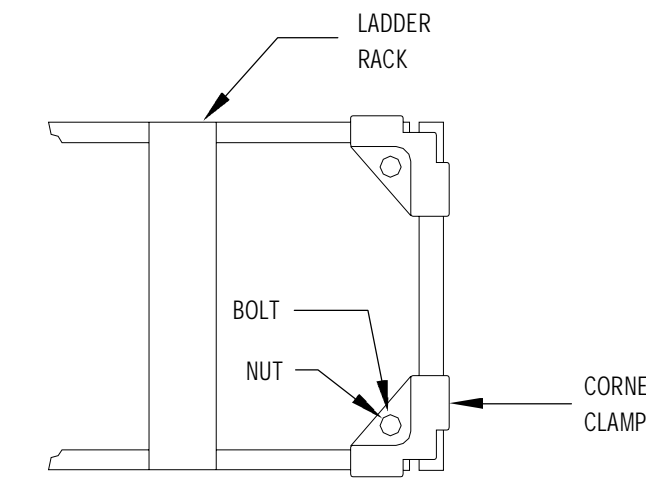


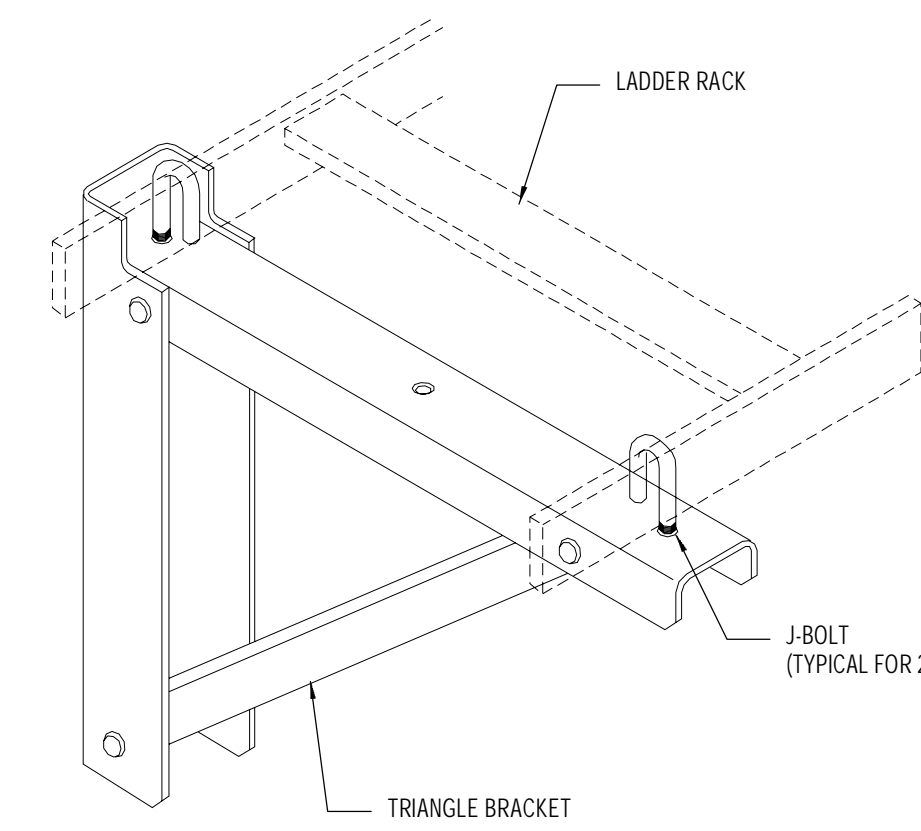
PERMIT SET	03.28.16	
PERMIT SET	03.08.16	
DESIGN DEVELOPMENT	08.25.17	
NO.	ISSUE	DATE
Job Number	B150311-000	
Drawn	RS	
Checked	BN	
Approved	BN	



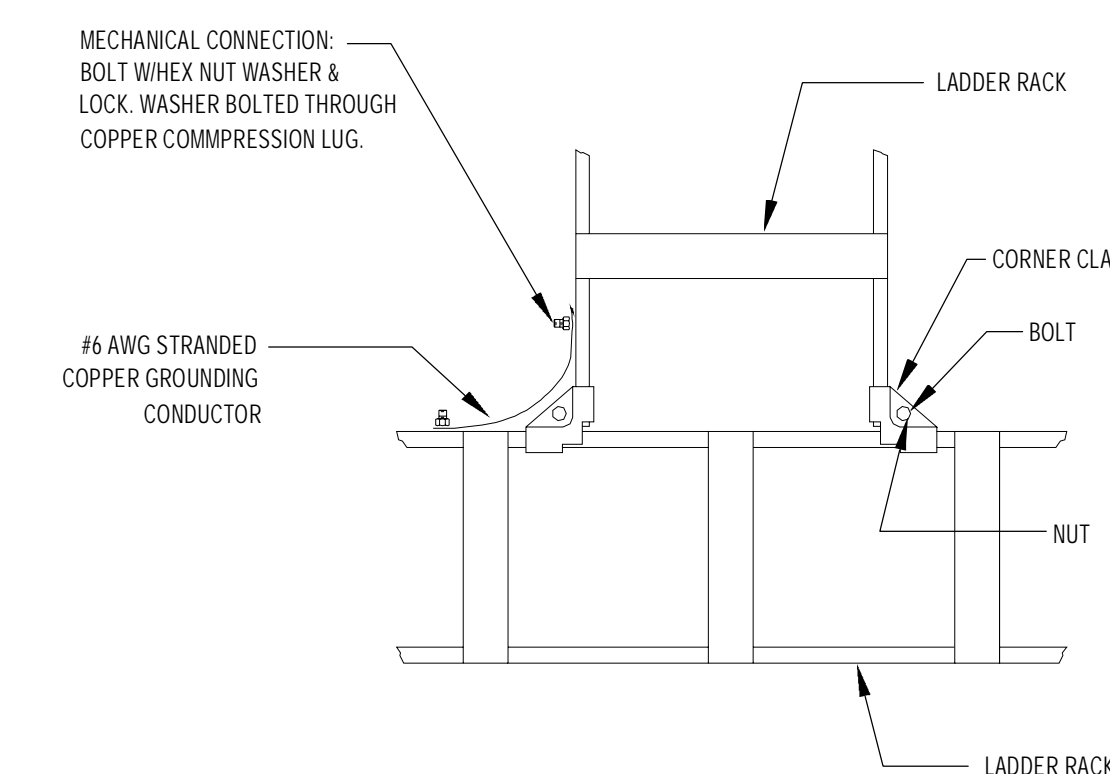
**6 LADDER RACK RETAINING BAR DETAIL**  
SCALE: NONE



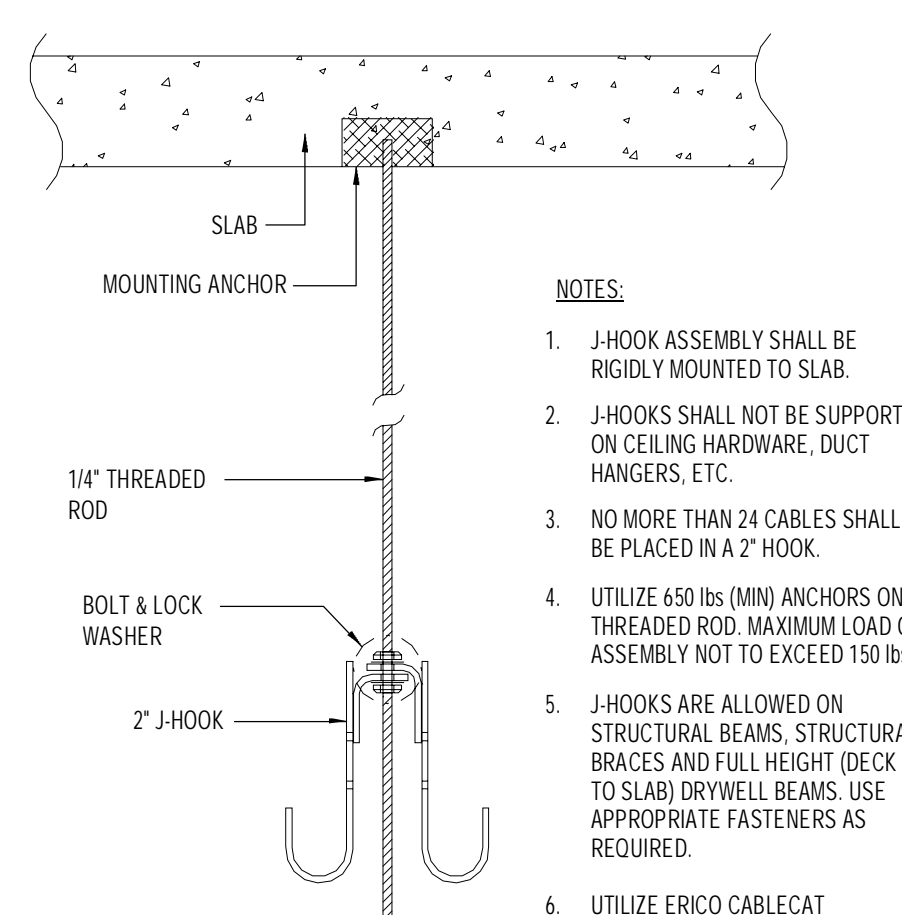
**4 LADDER RACK TERMINATION DETAIL**  
SCALE: NONE



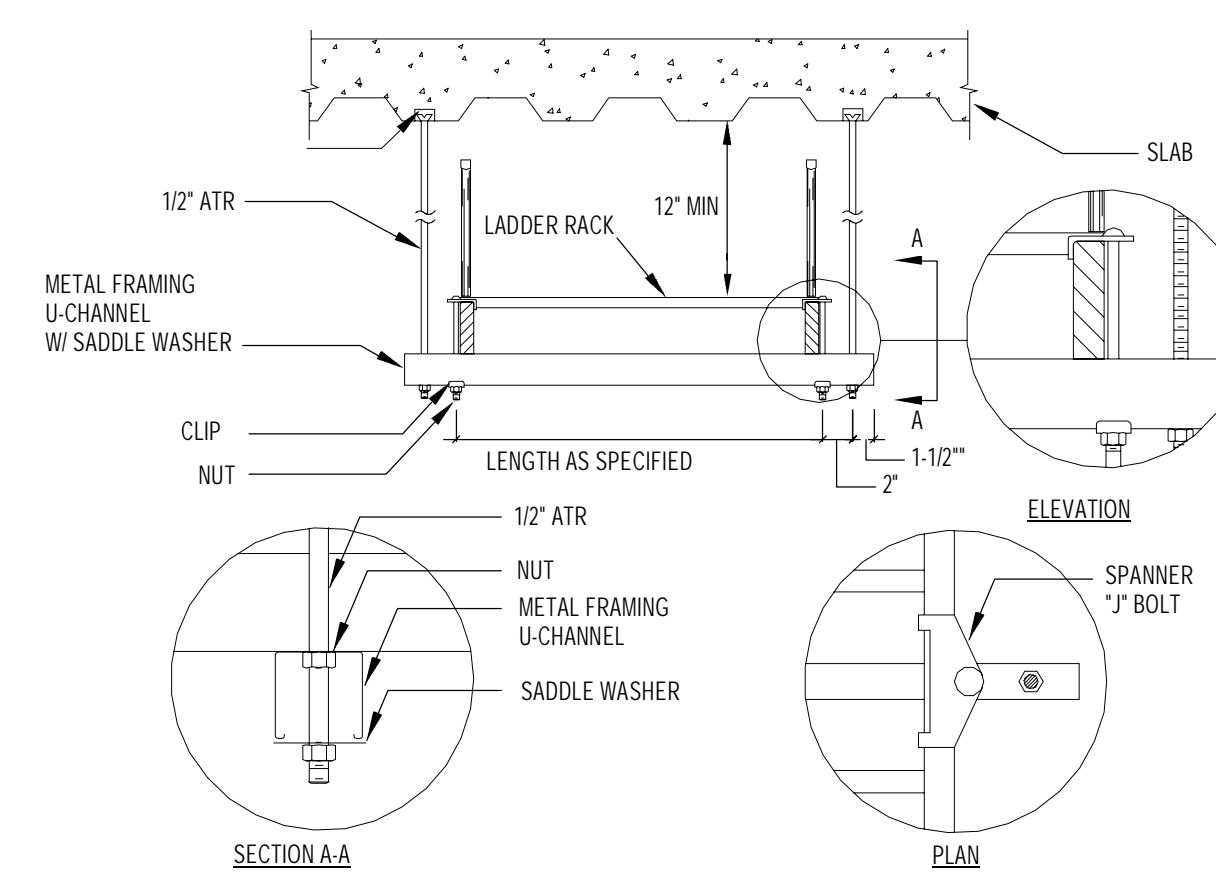
**2 LADDER RACK TRIANGLE BRACKET DETAIL**  
SCALE: NONE



**1 LADDER RACK T-SPLICE DETAIL**  
SCALE: N.T.S.



**5 J-HOOK DETAIL (AS REQUIRED)**  
SCALE: NONE



**3 LADDER RACK HANGING DETAIL**  
SCALE: N.T.S.

- NOTES:
- J-HOOK ASSEMBLY SHALL BE PROPERLY ANCHORED TO SLAB.
  - J-HOOKS SHALL NOT BE SUPPORTED ON CEILING HARDWARE, DUCT HANGERS, ETC.
  - NO MORE THAN 24 CABLES SHALL BE PLACED IN A 2" HOOK.
  - UTILIZE 480 TO 600V ANCHORS ON THREADED ROD. MAXIMUM LOAD ON ASSEMBLY NOT TO EXCEED 150 LBS.
  - J-HOOKS ARE ALLOWED ON STRUCTURE BEAMS, STRUCTURAL BRACES AND FULL HEIGHT DECK TO SLAB OR WELLS BEAMS. USE APPROPRIATE FASTENERS AS REQUIRED.
  - UTILIZE ERCO CABLECAT OR CADWIT J-HOOKS SYSTEM.

- NOTE:
- PROVIDE CONCRETE ANCHORS SIMILAR TO MULTI-KNICK BOLT OR SERIES N61 OR APPROVED EQUAL. INSTALLATION SHALL BE IN ACCORDANCE WITH MFR. RECOMMENDATIONS.