

CONSULTANTS

CLIENT LANDSCAPE ARCHITECT
Sebago Technics
 75 John Roberts Road, Suite 1A,
 South Portland, ME 04106

STRUCTURAL ENV. BUILDING ENVELOPE CONSULTANT
 Simpson Gumpertz & Heger Inc.
 41 Seay Street, Building 1, Suite 500,
 Waltham MA 02453

MEPP ENGINEER/ CODE
AKF Group LLC
 99 Bedford Street, 2nd Floor, Boston MA 02111

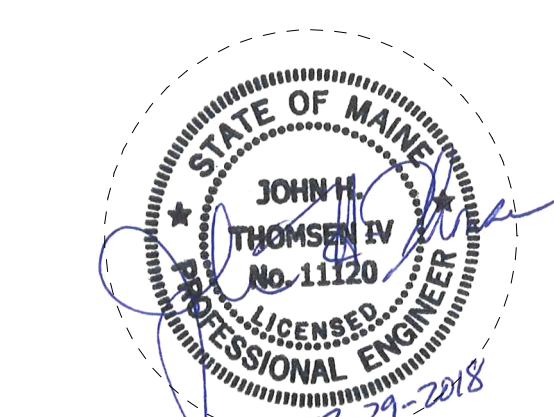
CONSTRUCTION MANAGER
Turner Construction
 2 Seaport Lane, Suite 200, Boston MA 02210

ELEVATOR CONSULTANT
VDA (Van Deusen & Associates)
 101 Summer Street, 4th Floor, Boston MA
 02110

COST ESTIMATOR
D. G. Jones International
 3 Baldwin Green Common, Suite 202, Woburn MA 01801

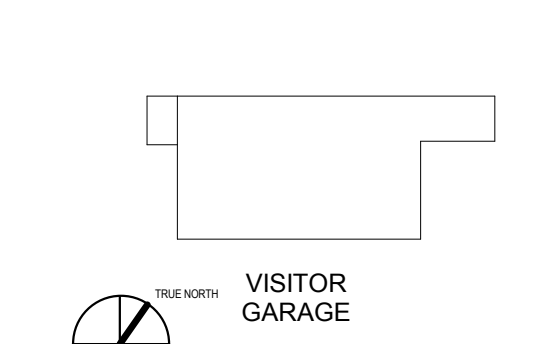
PROJECT TITLE

Visitor Garage Expansion
 22 Bramhall Street
 Portland, ME 04102



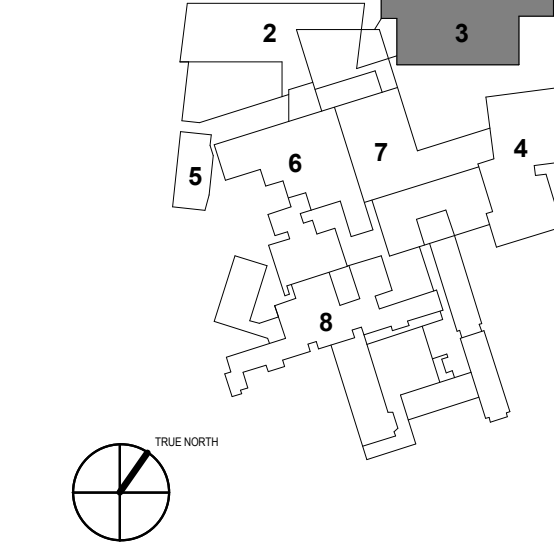
KEY PLANS

PROJECT KEY PLAN



OVERALL KEY PLAN

- 1 - NOT USED
- 2 - CONGRESS STREET
- 3 - VISITOR GARAGE
- 4 - EAST TOWER
- 5 - CENTRAL UTILITY PLANT
- 6 - SEAN BUILDING
- 7 - RICHARDS BUILDING
- 8 - MAINE GENERAL BUILDING



CONSTRUCTION DOCUMENT SET

SEPTEMBER 29, 2017

PERMIT SET	03.29.18	
PERMIT SET	03.09.18	
NO	ISSUE	DATE
Job Number	152182.000	
Drawn	KAK	
Checked	BMT	
Approved	JHT	

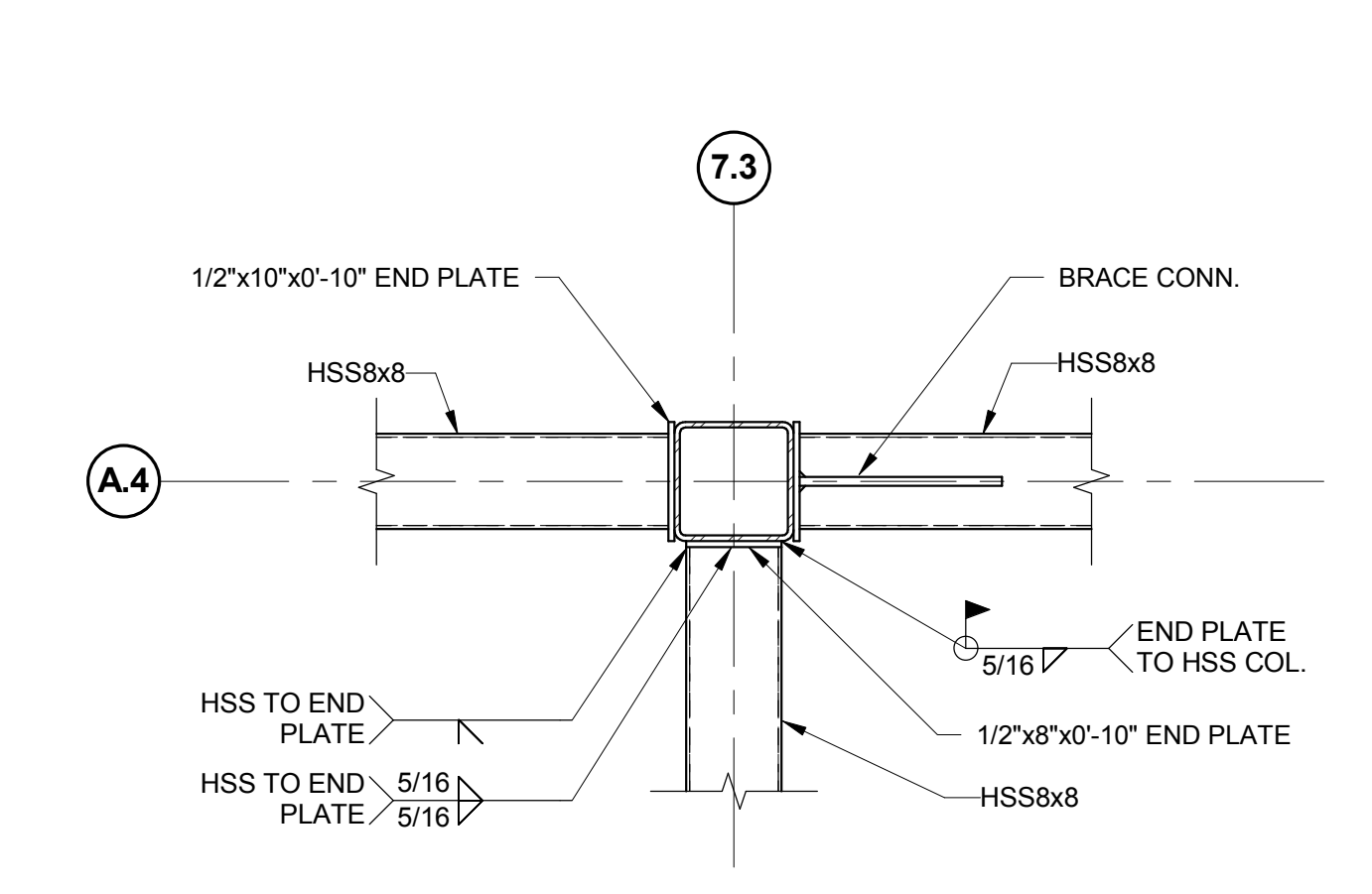
TITLE

STEEL DETAILS

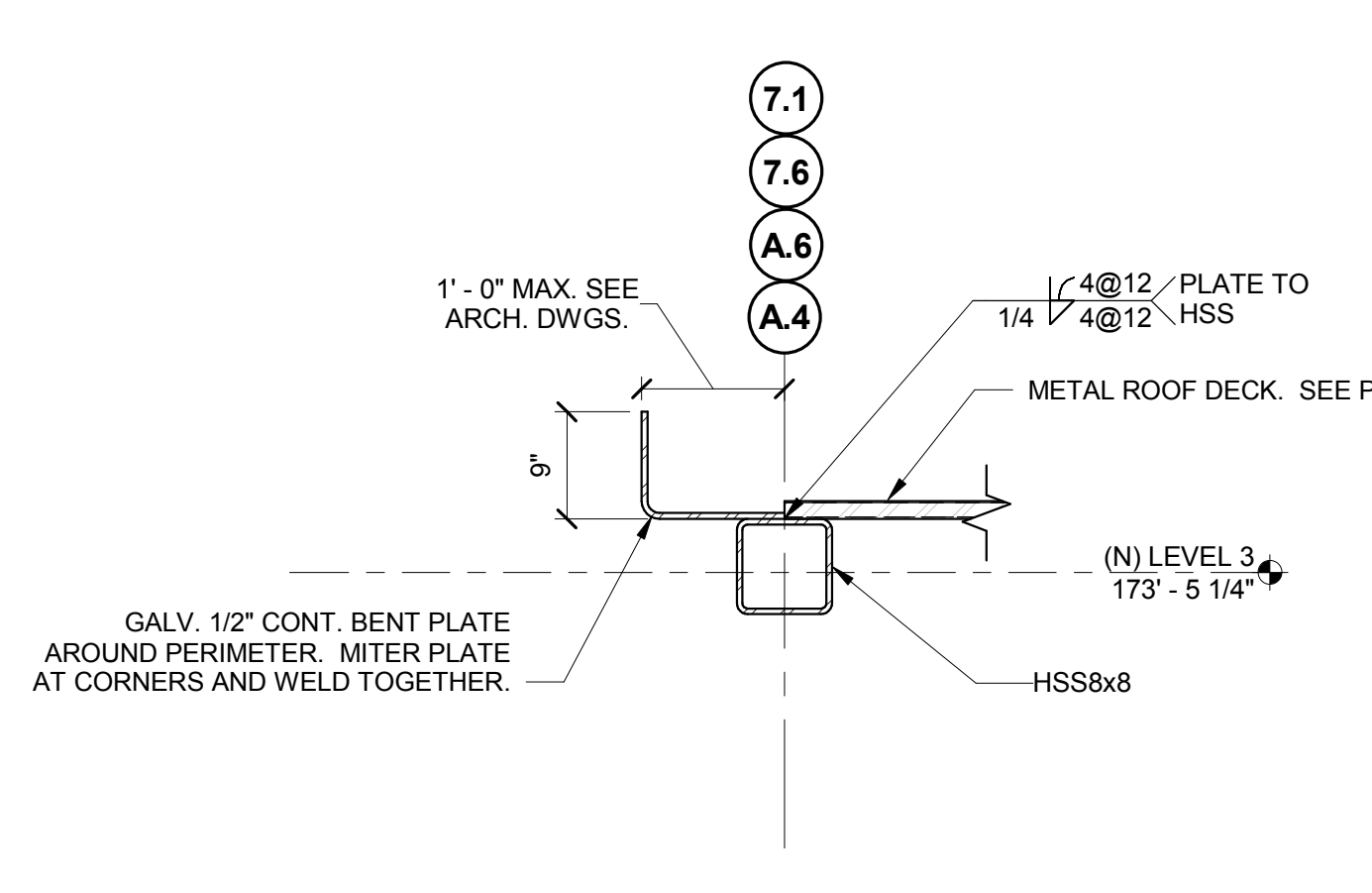
SHEET NUMBER

S40-20

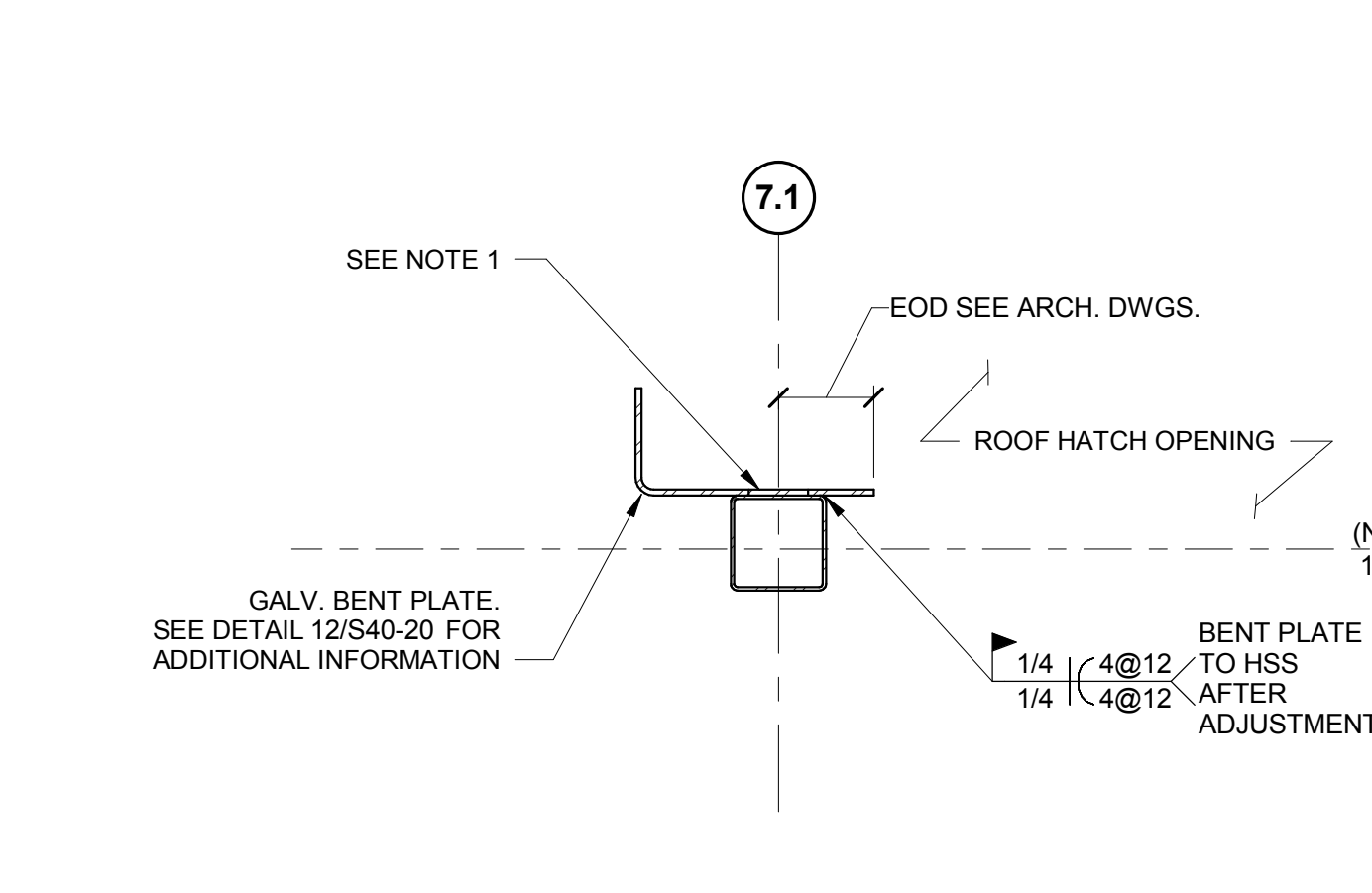
Copyright 2018 @ Perkins + Will



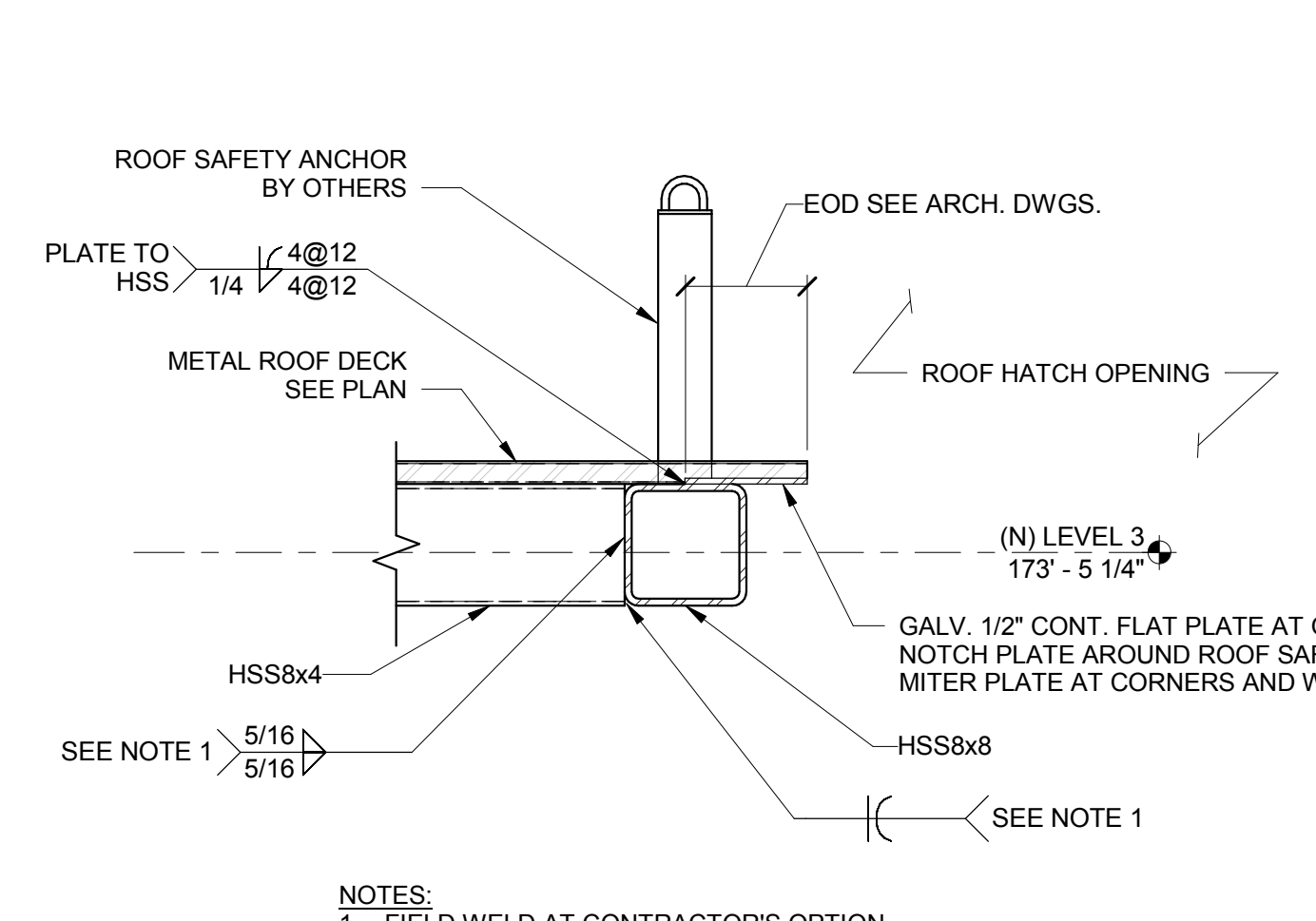
13 PLAN DETAIL: EAST STAIR TOWER BEAM TO COLUMN CONN.
 3/4" = 1'-0"



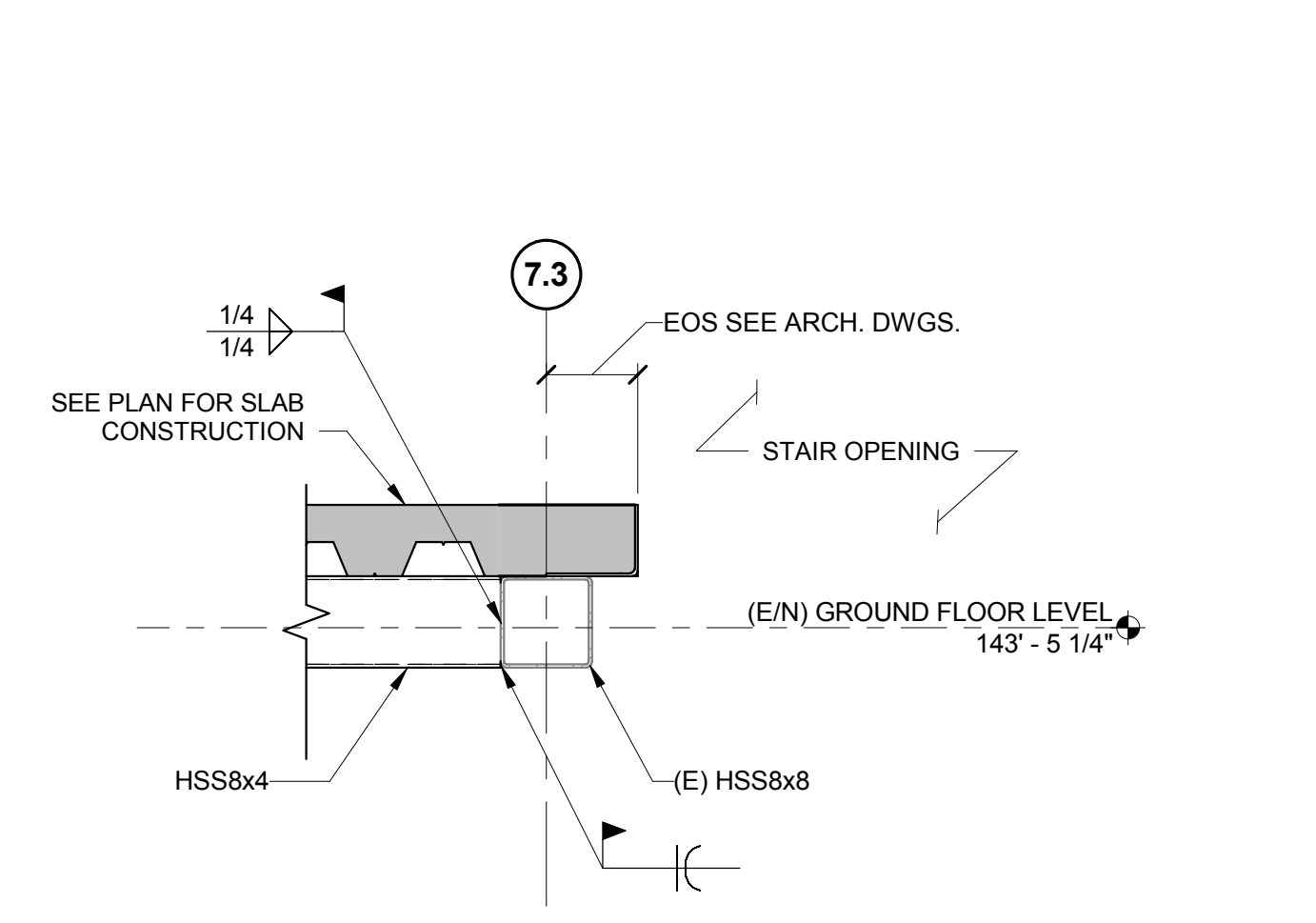
12 SECTION: TYPICAL ROOF EDGE DETAIL
 3/4" = 1'-0"



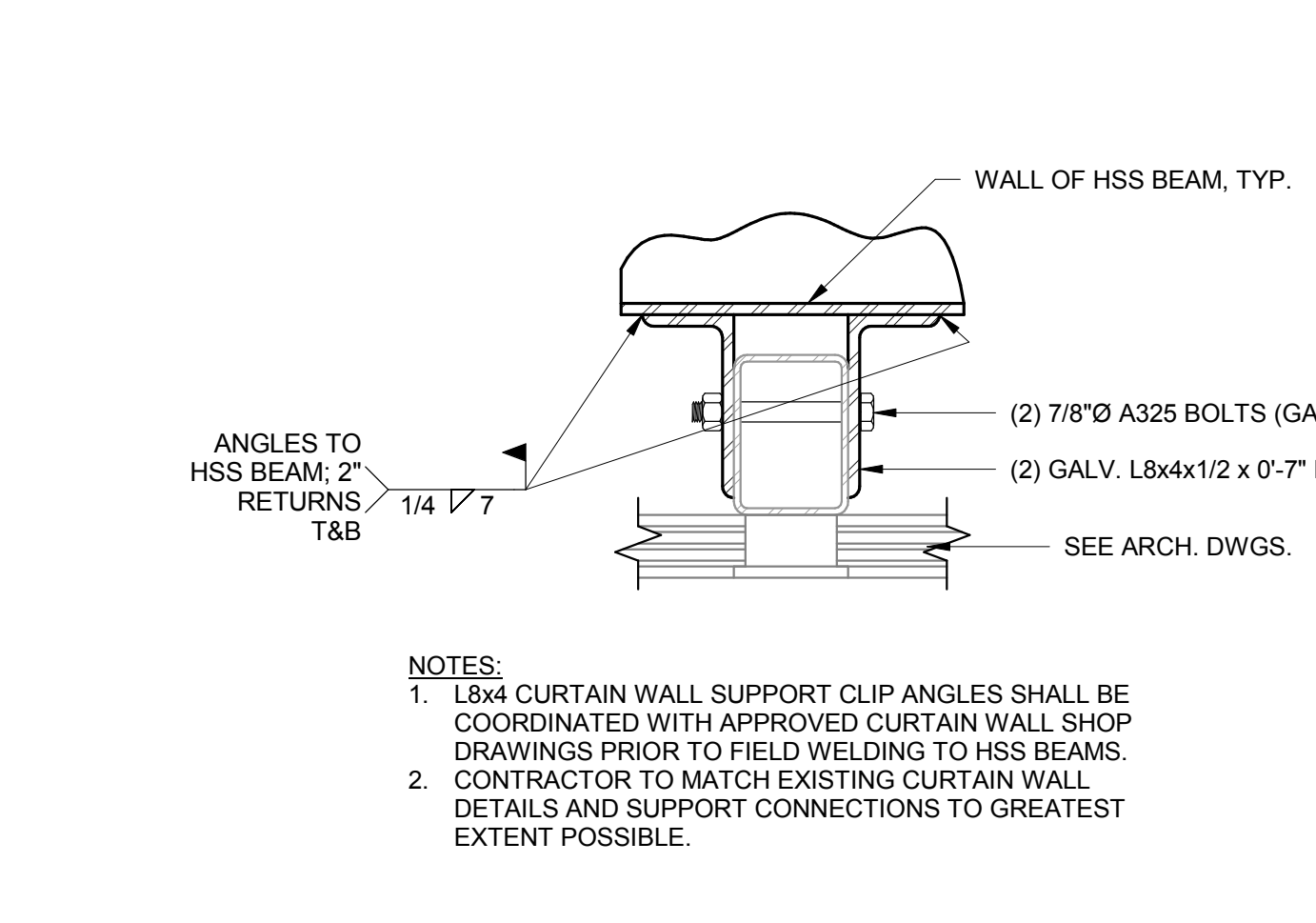
11 SECTION: ROOF EDGE DETAIL AT HATCH OPENING
 3/4" = 1'-0"



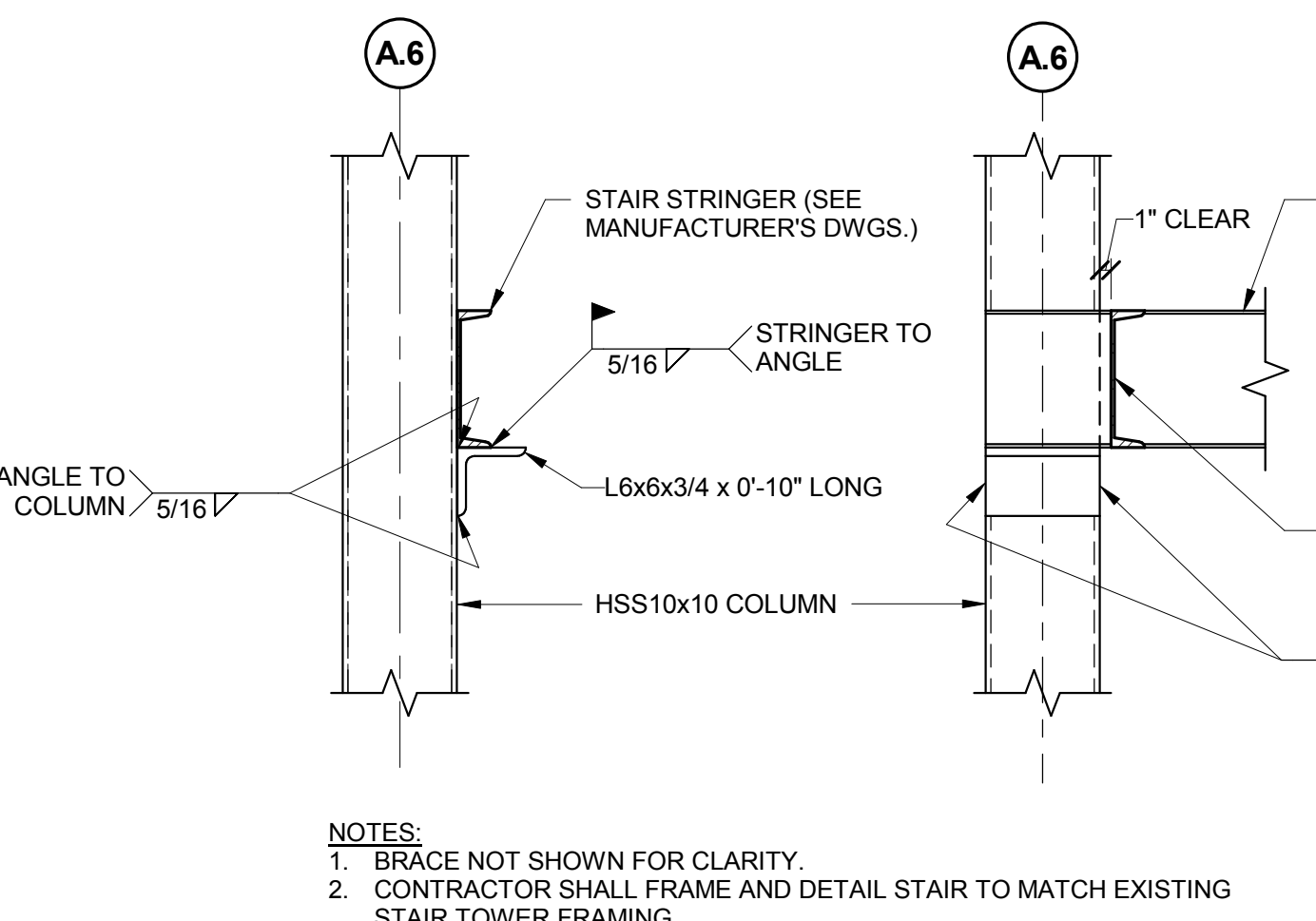
10 SECTION: CONNECTION AT ROOF SAFETY ANCHOR
 1" = 1'-0"



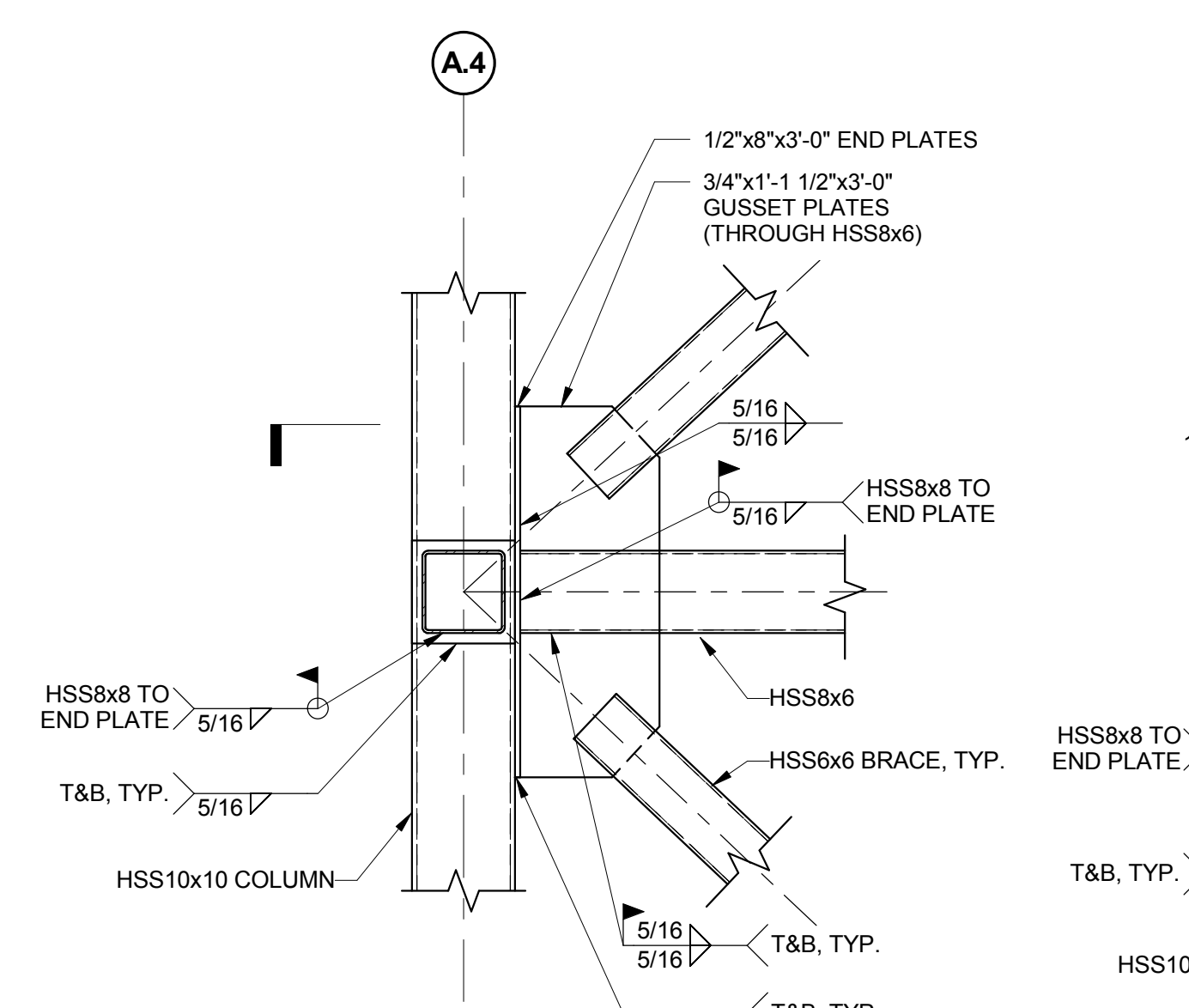
9 (N) HSS BEAM TO (E) HSS BEAM
 3/4" = 1'-0"



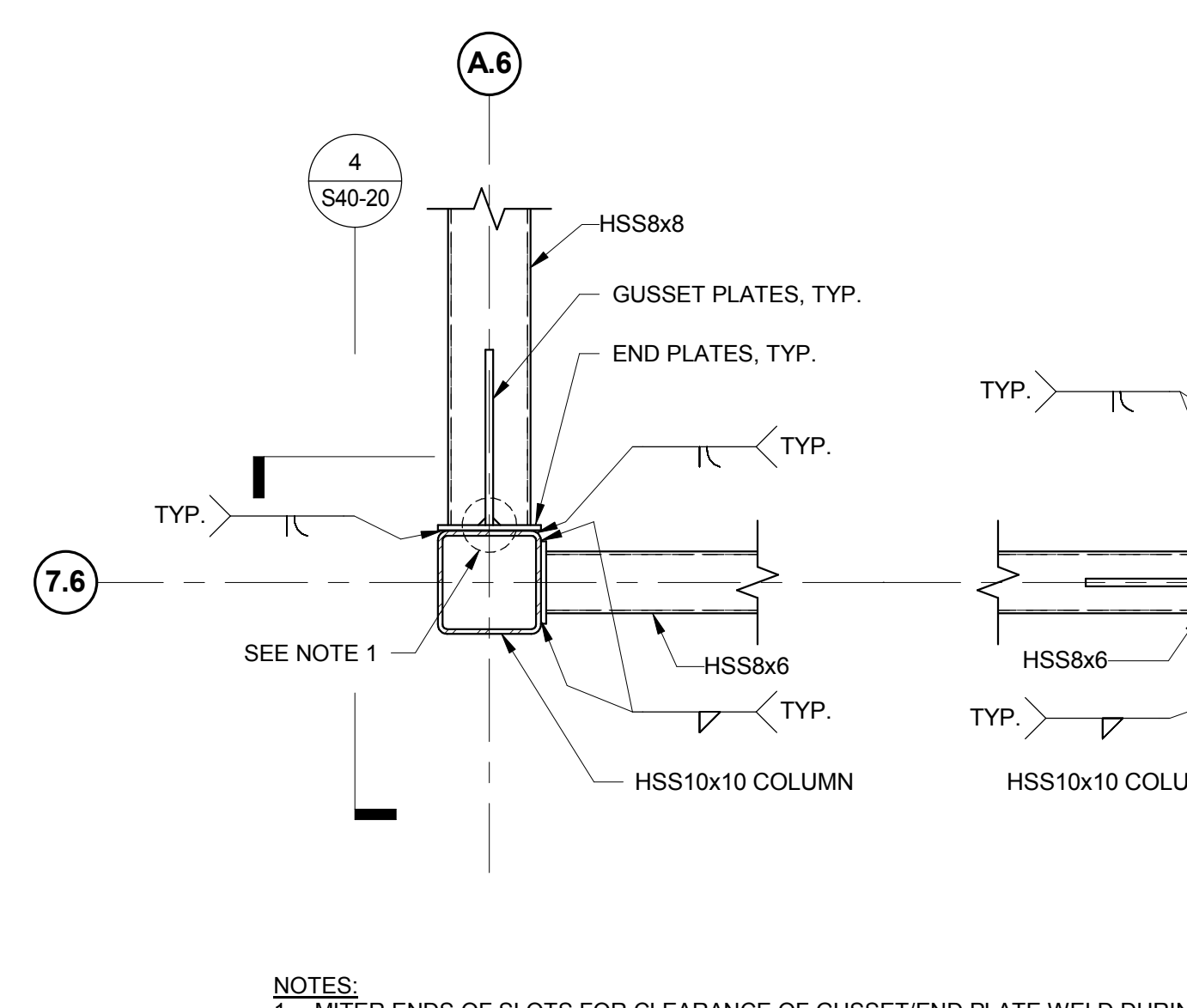
8 PLAN DETAIL: EXTERIOR CURTAIN WALL SUPPORT AT EAST TOWER
 1 1/2" = 1'-0"



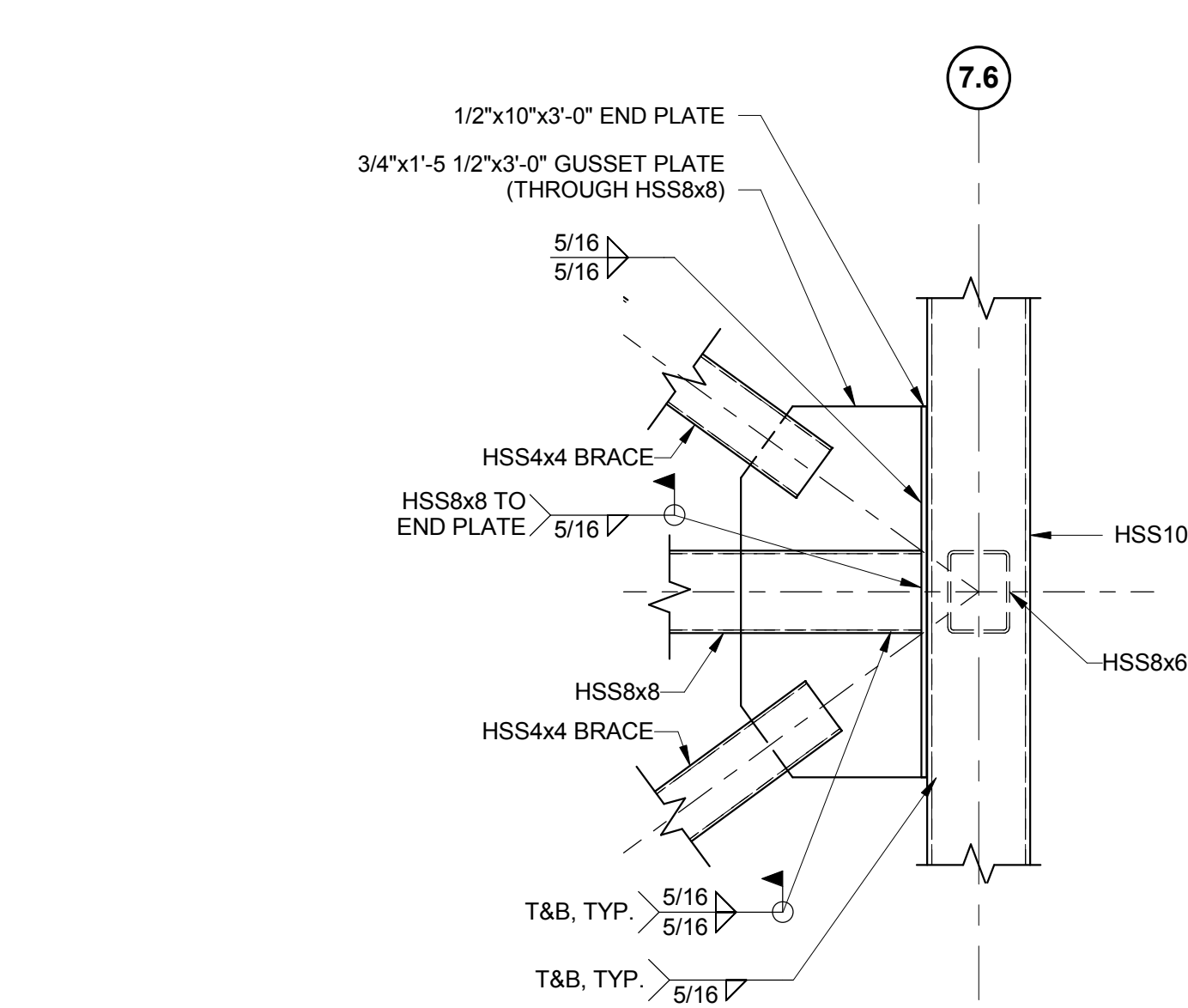
7 EAST STAIR STRINGER TO INTERMEDIATE LANDING
 3/4" = 1'-0"



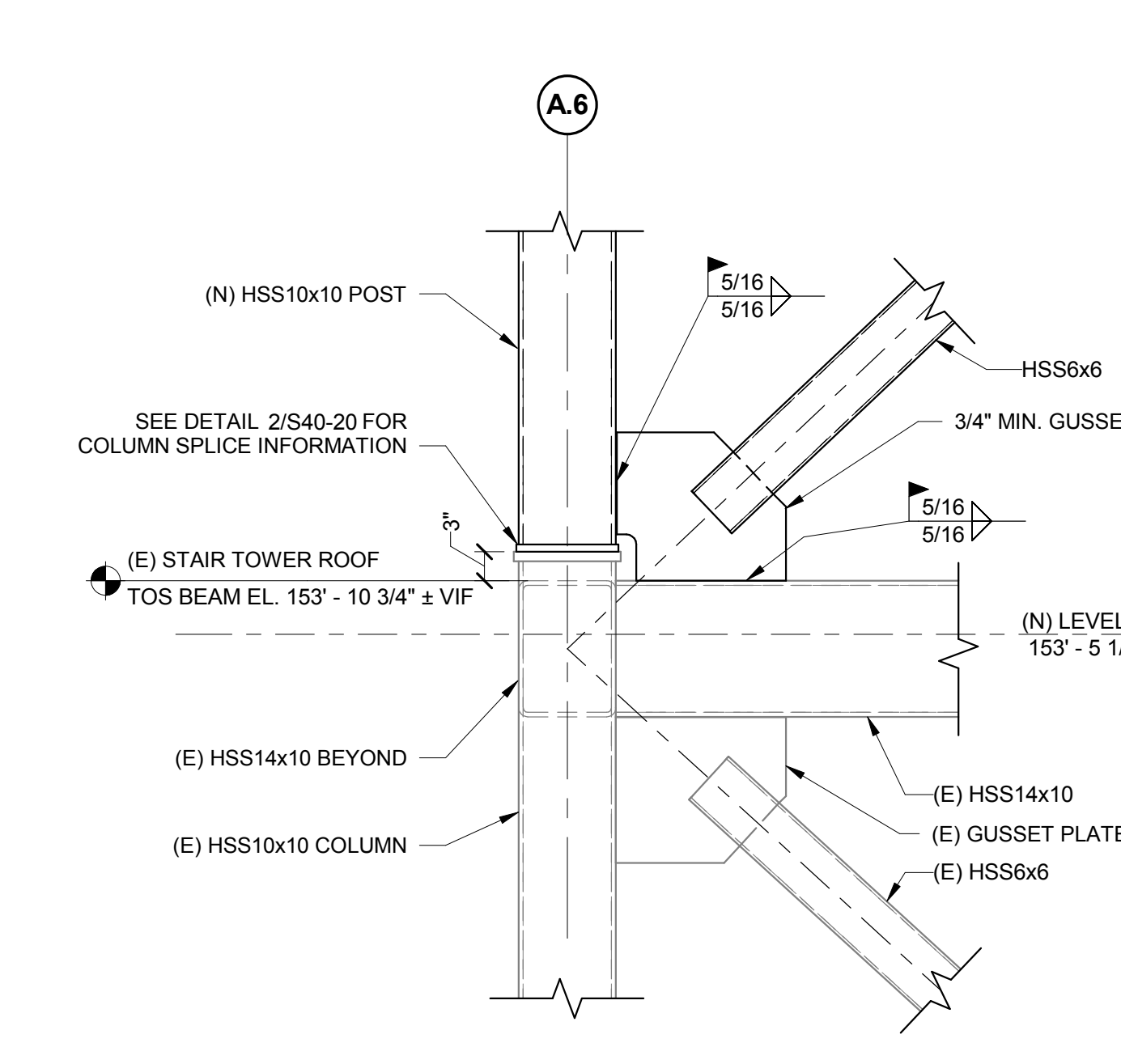
6 SECTION: STAIR BRACE CONNECTION
 3/4" = 1'-0"



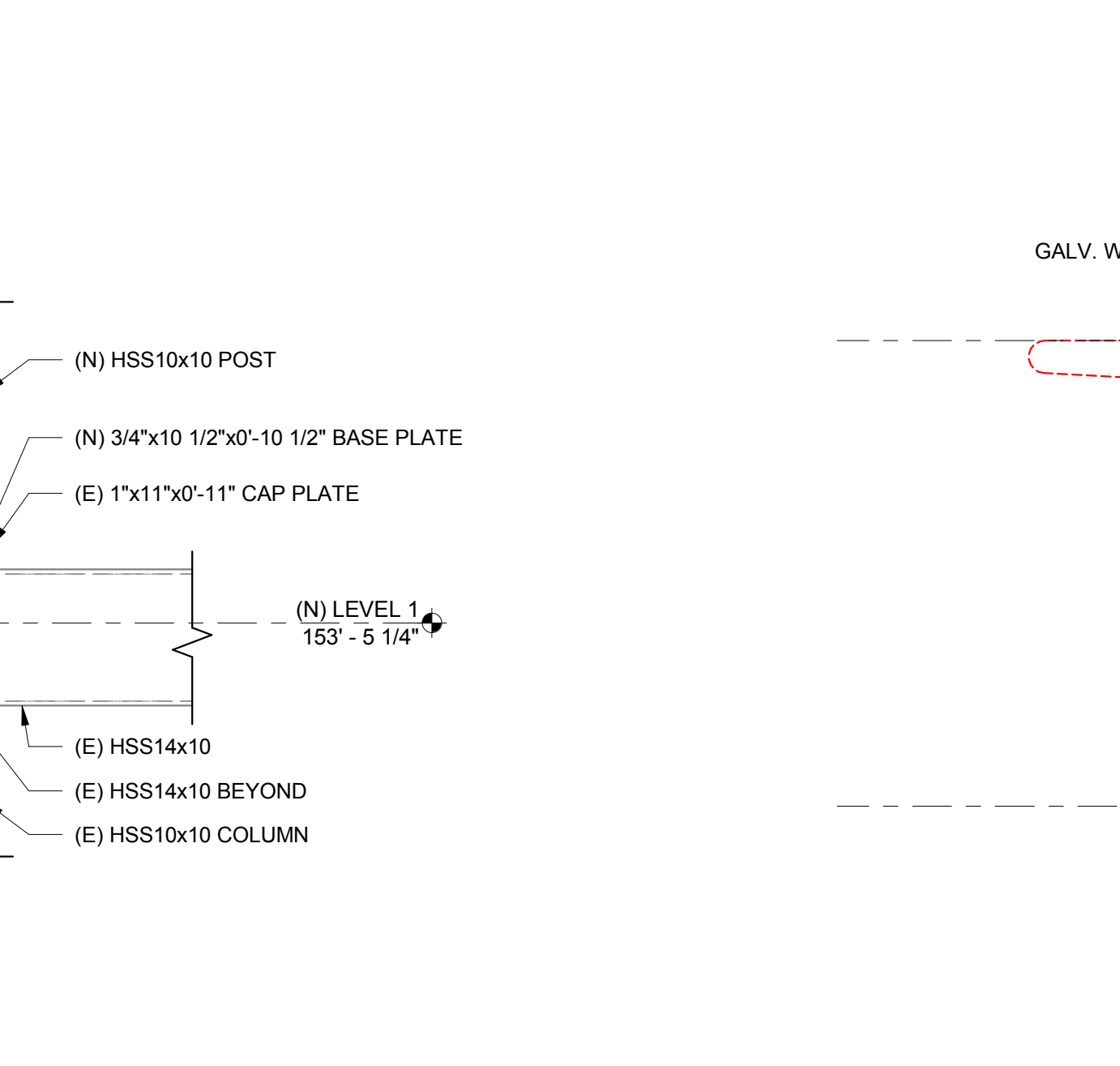
5 PART PLAN: STAIR BRACE CONNECTION
 3/4" = 1'-0"



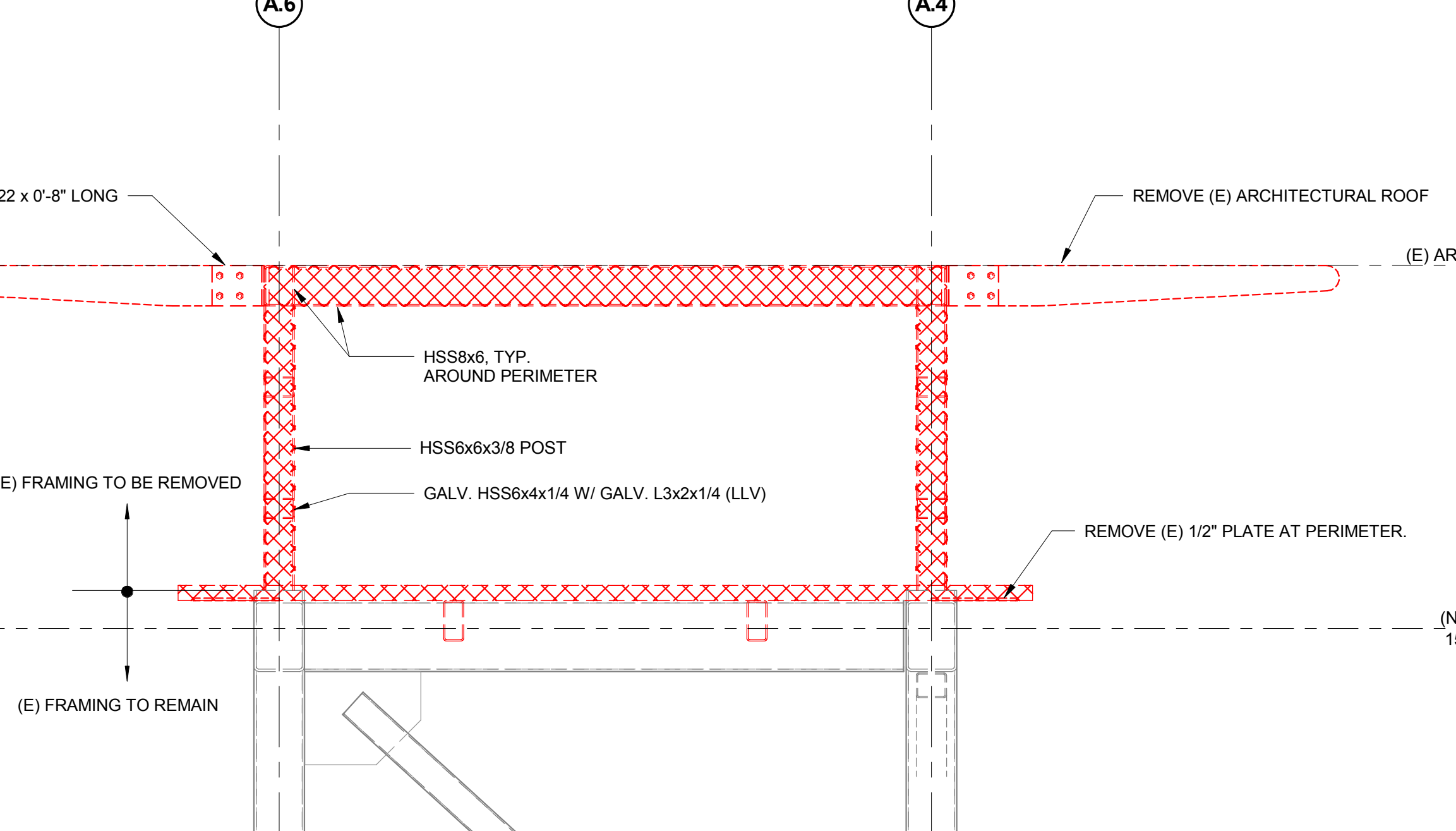
4 SECTION: STAIR BRACE CONNECTION
 3/4" = 1'-0"



3 DETAIL: TYPICAL (N) BRACE TO (E) BEAM AT LEVEL 1
 3/4" = 1'-0"



2 DETAIL: TYPICAL COLUMN SPLICE AT LEVEL 1
 3/4" = 1'-0"



1 ELEVATION: (E) VESTIBULE ROOF DEMOLITION
 1/2" = 1'-0"

3/29/2018 10:12:32 AM
 I:\SOS\Project\2017\152182.00\MaineMedicalCenter\152182.00\VISITOR GARAGE\2017 - STRUCT_1\MSD\maine.med