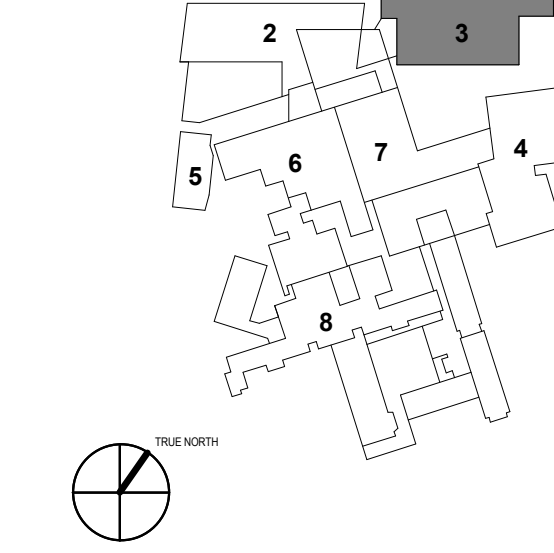


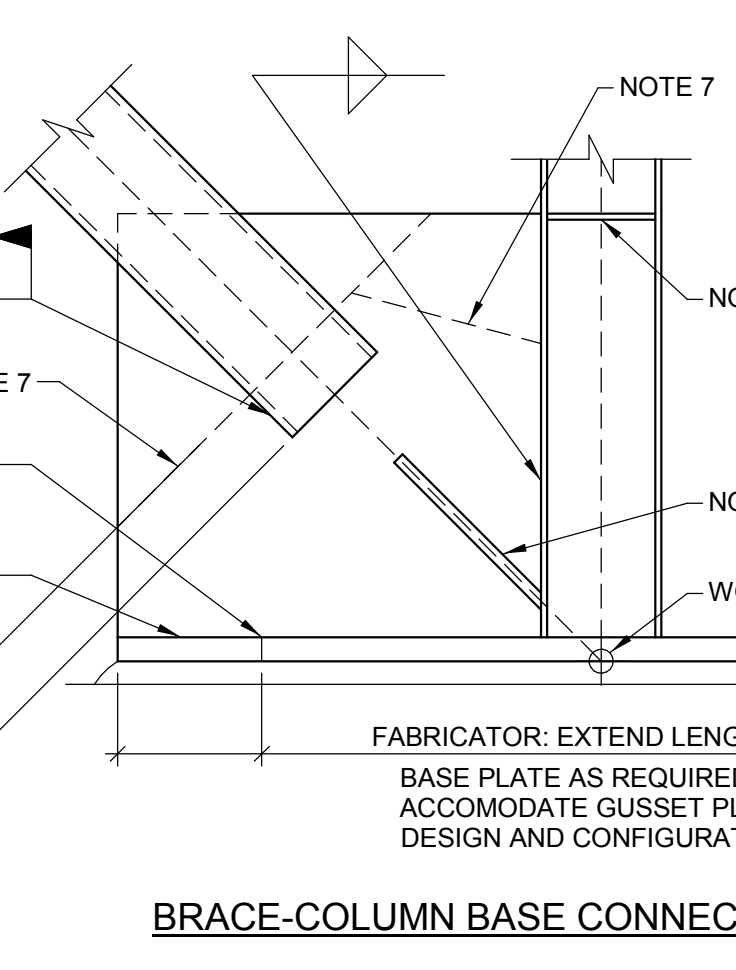
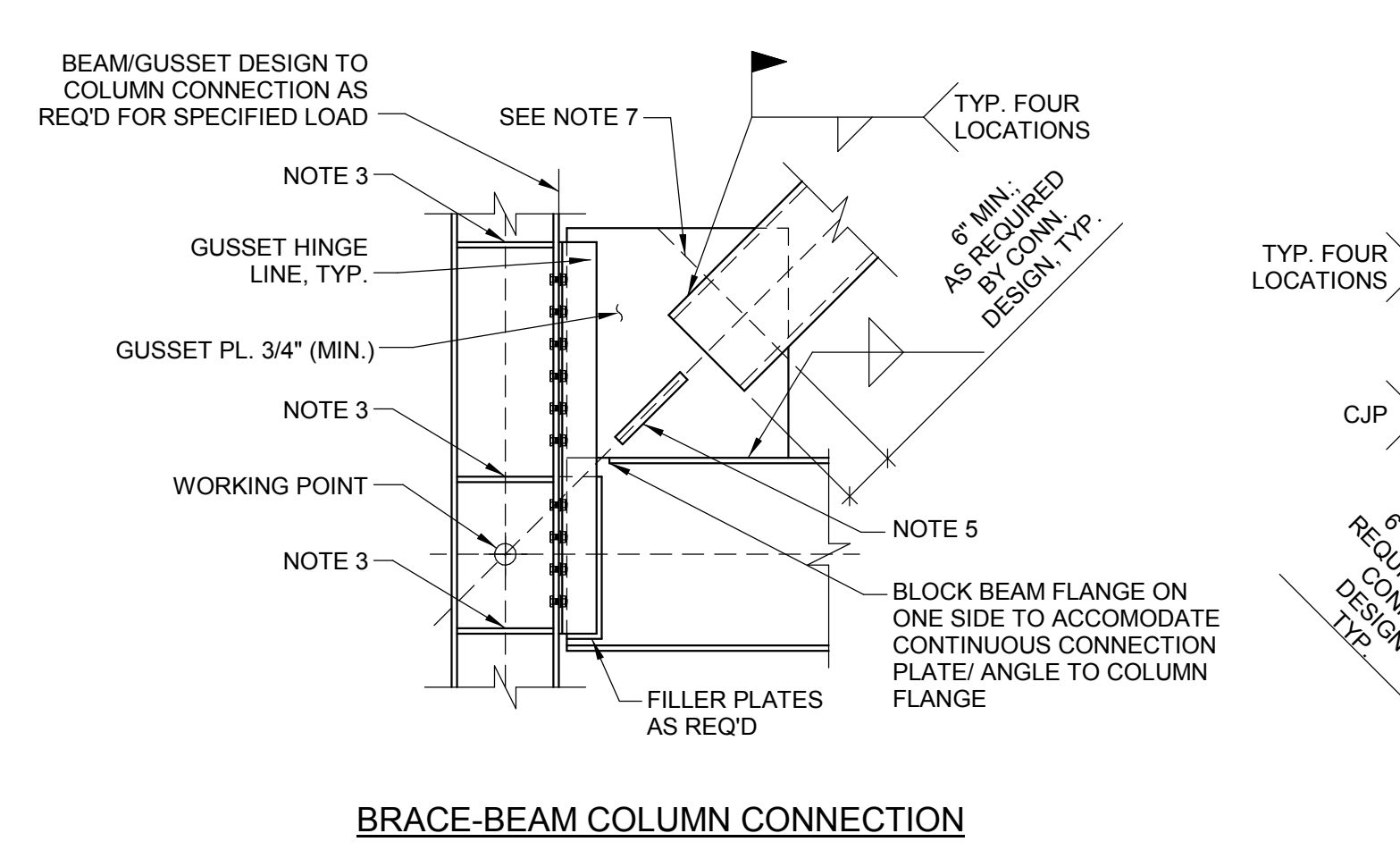
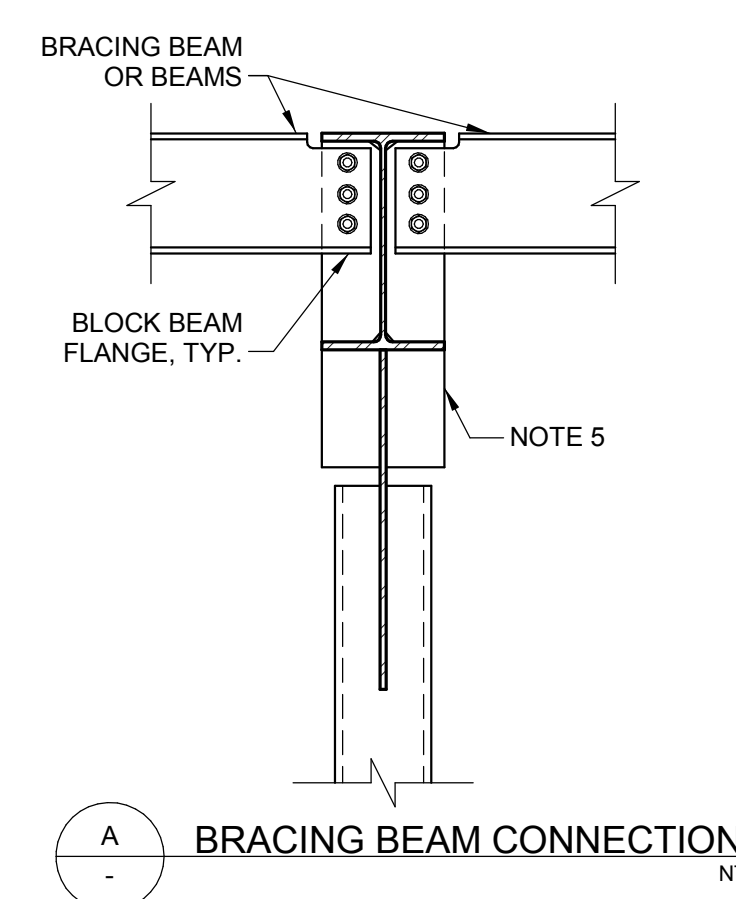
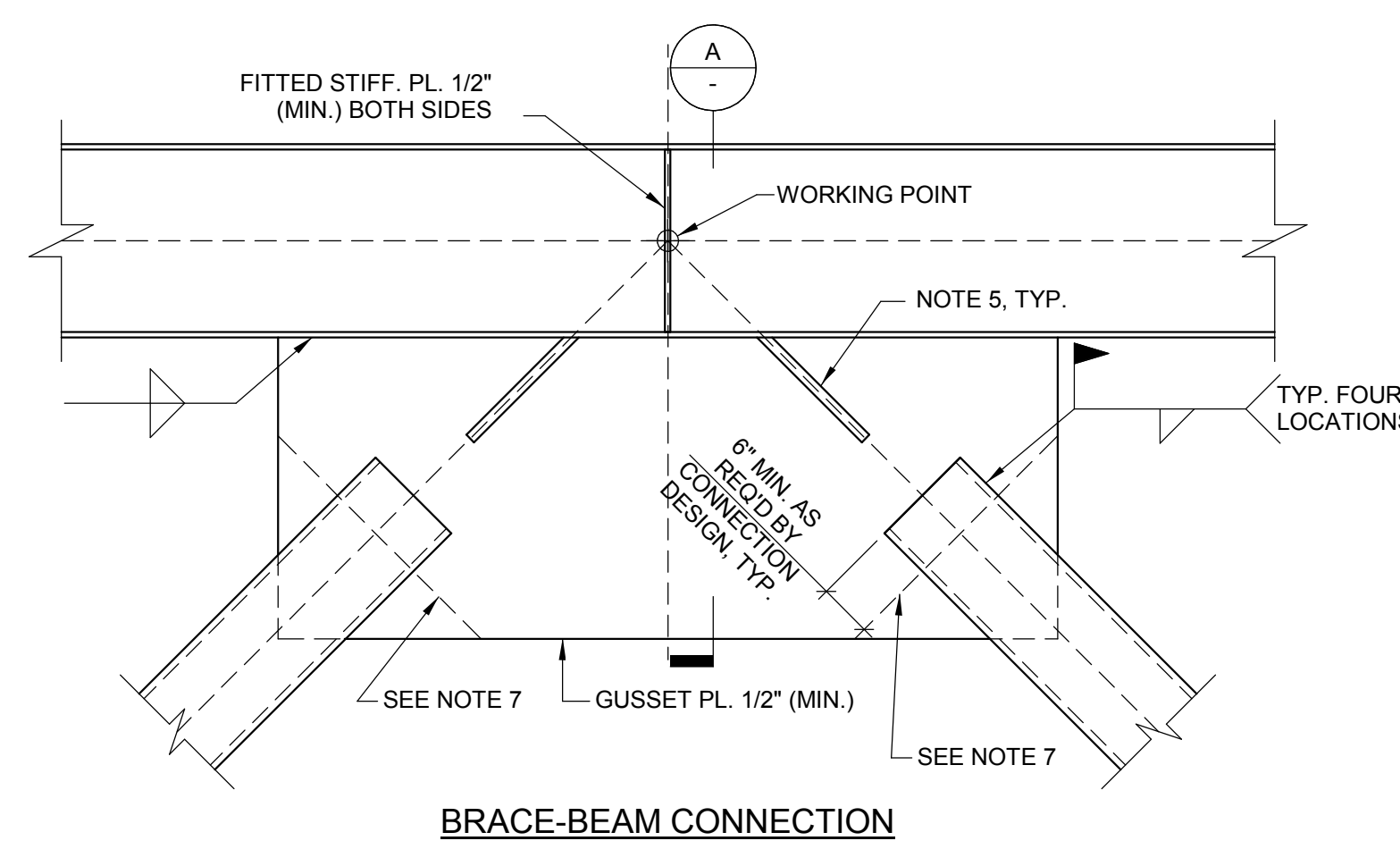
- OVERALL KEY PLAN
- 1 - NOT USED
 - 2 - CONGRESS STREET
 - 3 - VISITOR GARAGE
 - 4 - EAST TOWER
 - 5 - CENTRAL UTILITY PLANT
 - 6 - SEAN BUILDING
 - 7 - RICHARDS BUILDING
 - 8 - MAINE GENERAL BUILDING



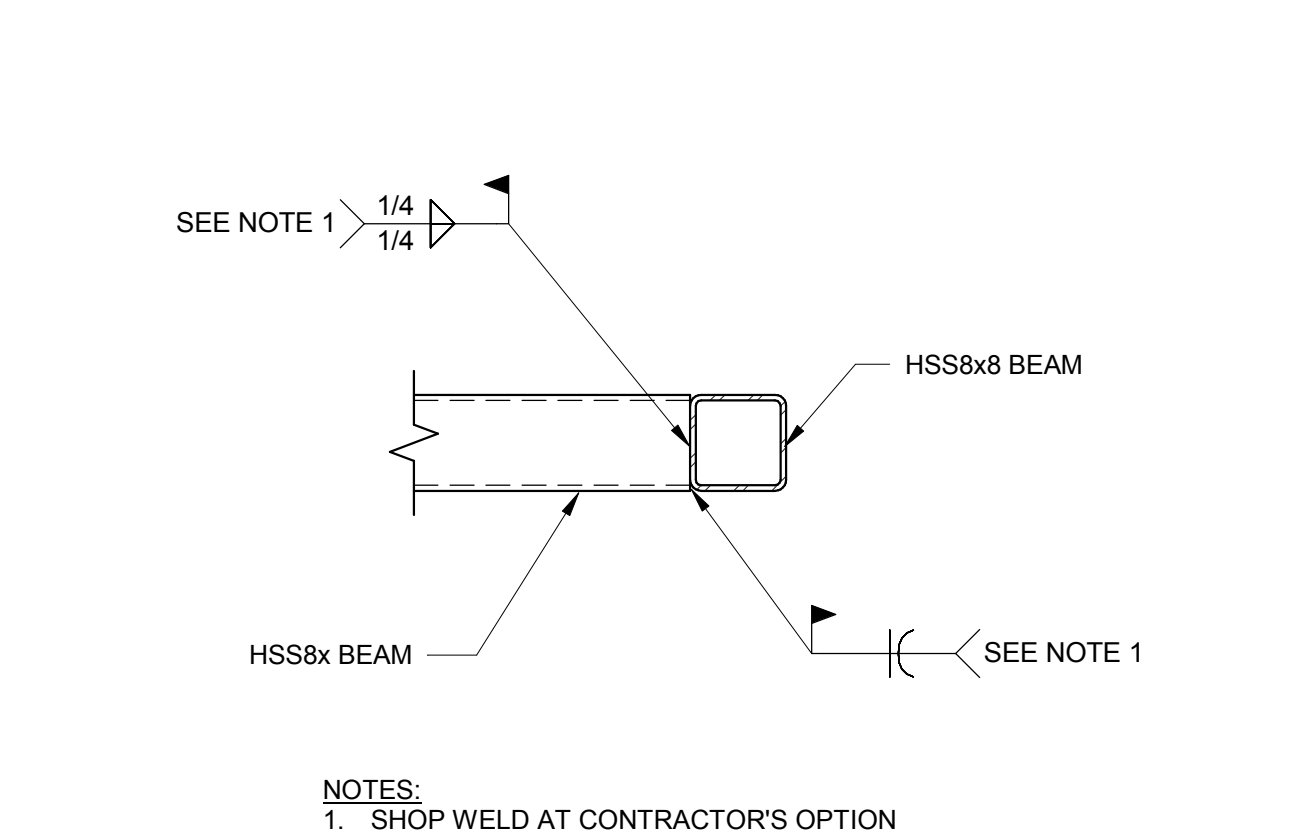
PERMIT SET	03.29.16	
PERMIT SET	03.09.16	
NO.	ISSUE	DATE
Job Number	152182.000	
Drawn	KAK	
Checked	BMT	
Approved	JHT	

BEAM SIZE	VERTICAL FACTORED LOAD REACTION (KIPS) (SEE NOTE 1)	MINIMUM NUMBER OF BOLTS (SEE NOTE 6)	HORIZONTAL FACTORED TENSILE FORCE (KIPS) (SEE NOTE 7)
HSS 8x4	8	2	10
HSS 8x6 & HSS 6x8	15	2	10
HSS 14x6 & HSS 14x10	20	3	14

- NOTES:
- LOADS IN THIS TABLE HAVE BEEN FACTORED IN ACCORDANCE WITH SECTION 2.3 OF ASCE 7-10.
 - SEE GENERAL NOTES FOR ADDITIONAL INFORMATION.
 - BEAM REACTIONS SHOWN ON PLAN TAKE PRECEDENCE OVER THOSE SHOWN IN THIS TABLE. FOR THOSE SHOWN ON PLAN, PROVIDE A HORIZONTAL FACTORED TENSILE FORCE EQUAL TO 2/3 THE VERTICAL FACTORED LOAD UON. VERTICAL AND HORIZONTAL LOADS NEED NOT BE ASSUMED TO ACT CONCURRENTLY.
 - SEE DETAILS AND SECTIONS FOR BEAMS REQUIRING FULL DEPTH SHEAR CONNECTIONS. FIELD WELDED CONNECTIONS MAY BE USED IN LIEU OF BOLTED CONNECTIONS AT CONTRACTOR'S OPTION, HOWEVER, SHOP DRAWINGS FOR ALL FIELD WELDED CONNECTIONS MUST BE SUBMITTED AND APPROVED BY THE EOR PRIOR TO BEGINNING FABRICATION.
 - USE 3/4" Ø A325N BOLTS (MIN).
 - FOR COMPLIANCE WITH STRUCTURAL INTEGRITY REQUIREMENTS OF 2015 IBC 1615.3.2.2, CONNECTIONS SHALL HAVE MINIMUM HORIZONTAL AXIAL TENSILE STRENGTH INDICATED. VERTICAL REACTION AND HORIZONTAL TENSILE FORCE NEED NOT ACT CONCURRENTLY.
 - DRAG FORCES (P) SHOWN ON PLAN ARE CONCURRENT WITH THE LARGER OF THE VERTICAL FACTORED LOAD SHOWN IN TABLE OR ON PLAN (V).

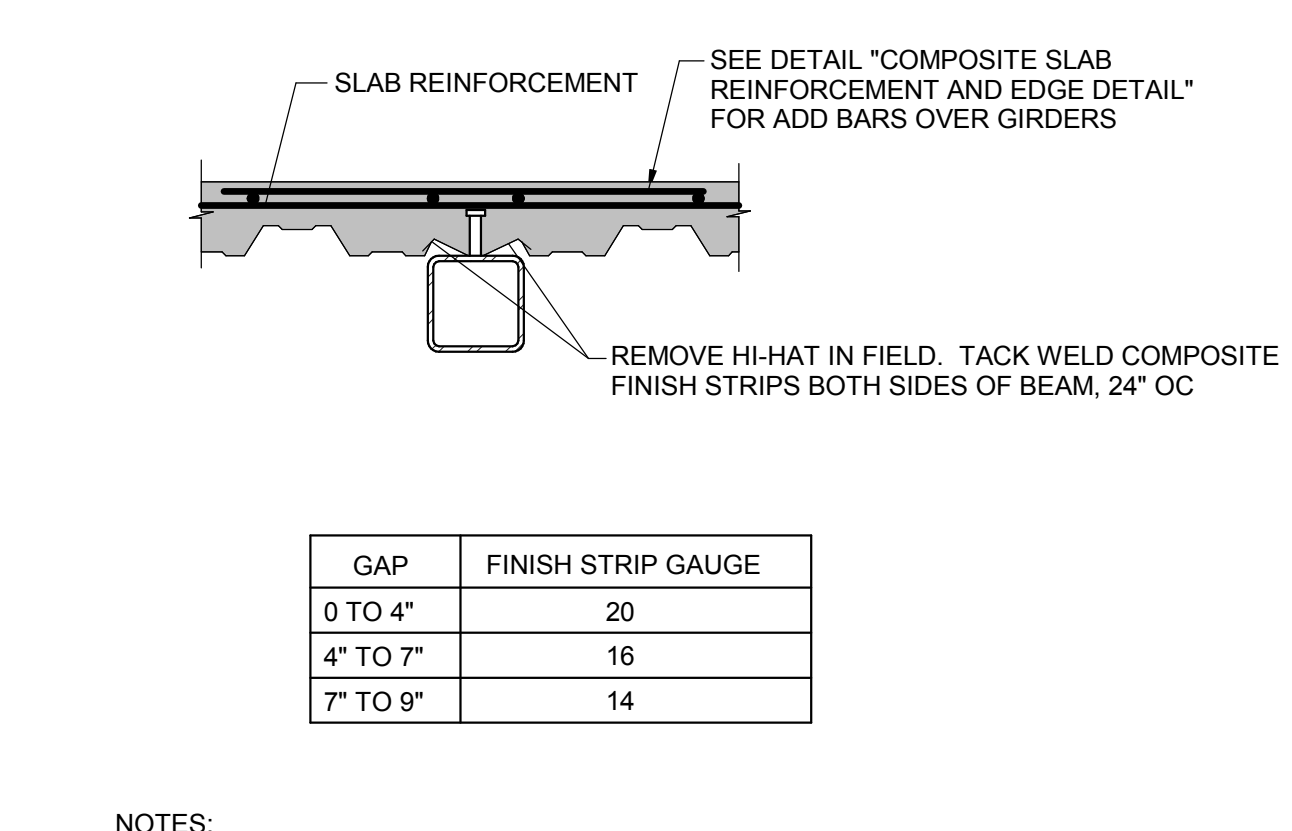


13 BEAM SHEAR REACTION TABLE
3/4" = 1'-0"

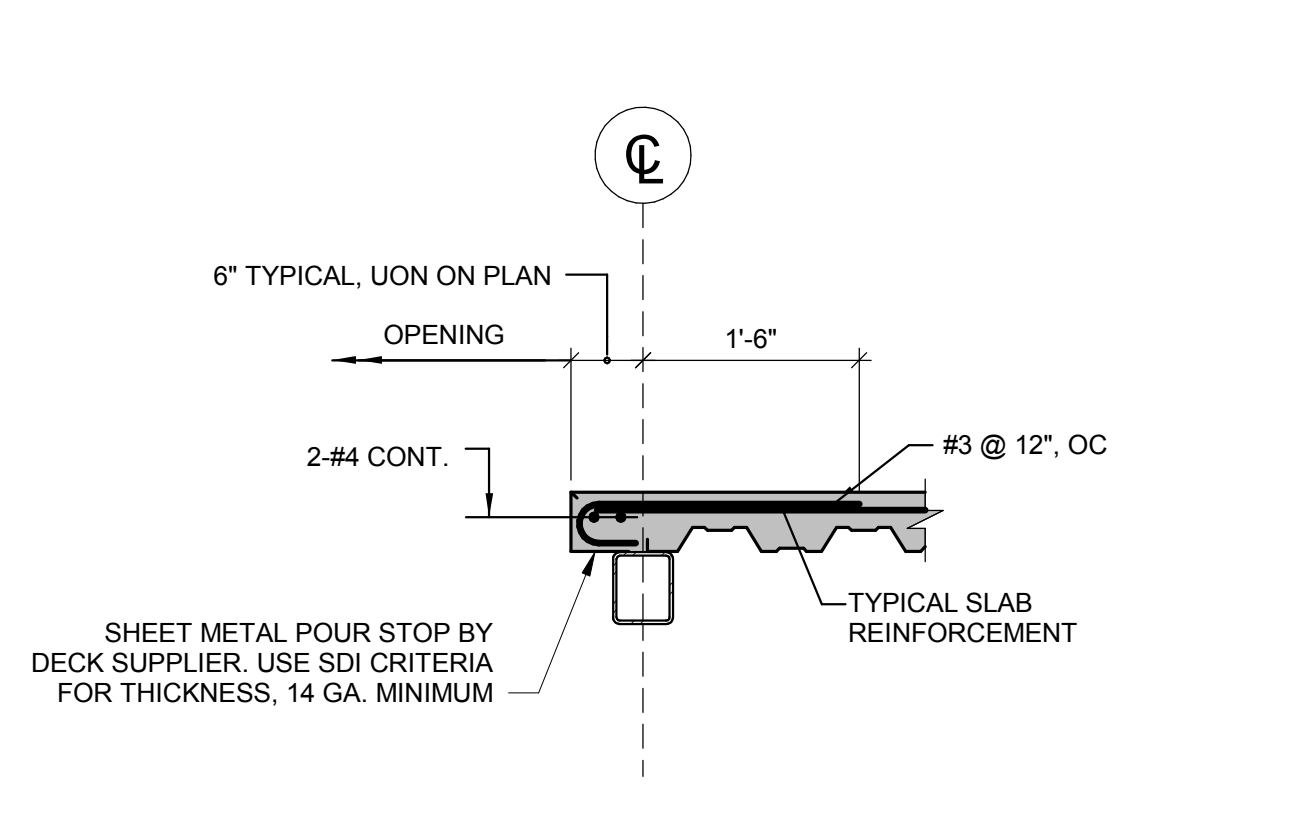


11 TYP. HSS BEAM TO BEAM SHEAR CONN.
3/4" = 1'-0"

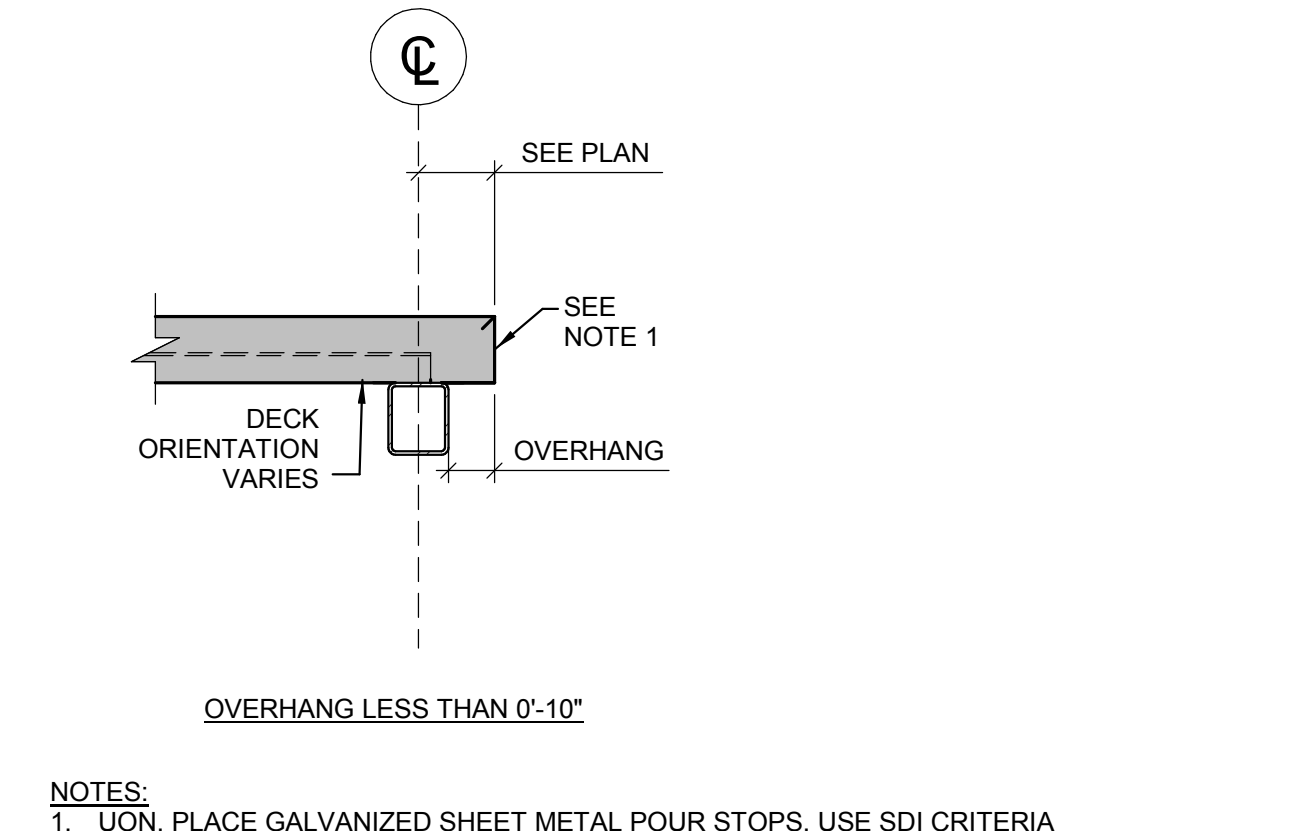
10 STEEL DECK PARALLEL TO STEEL SUPPORT
3/4" = 1'-0"



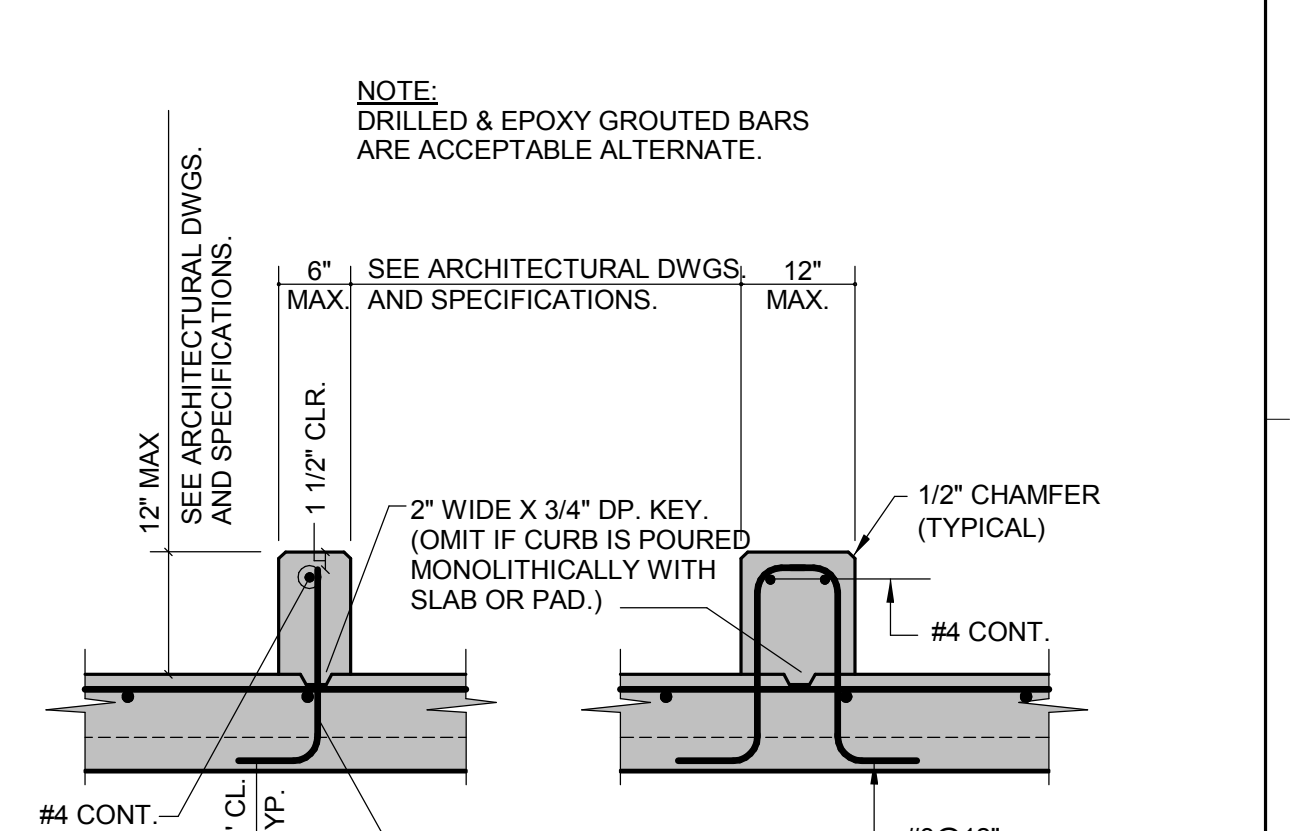
12 BRACED FRAME CONNECTION DETAILS
3/4" = 1'-0"



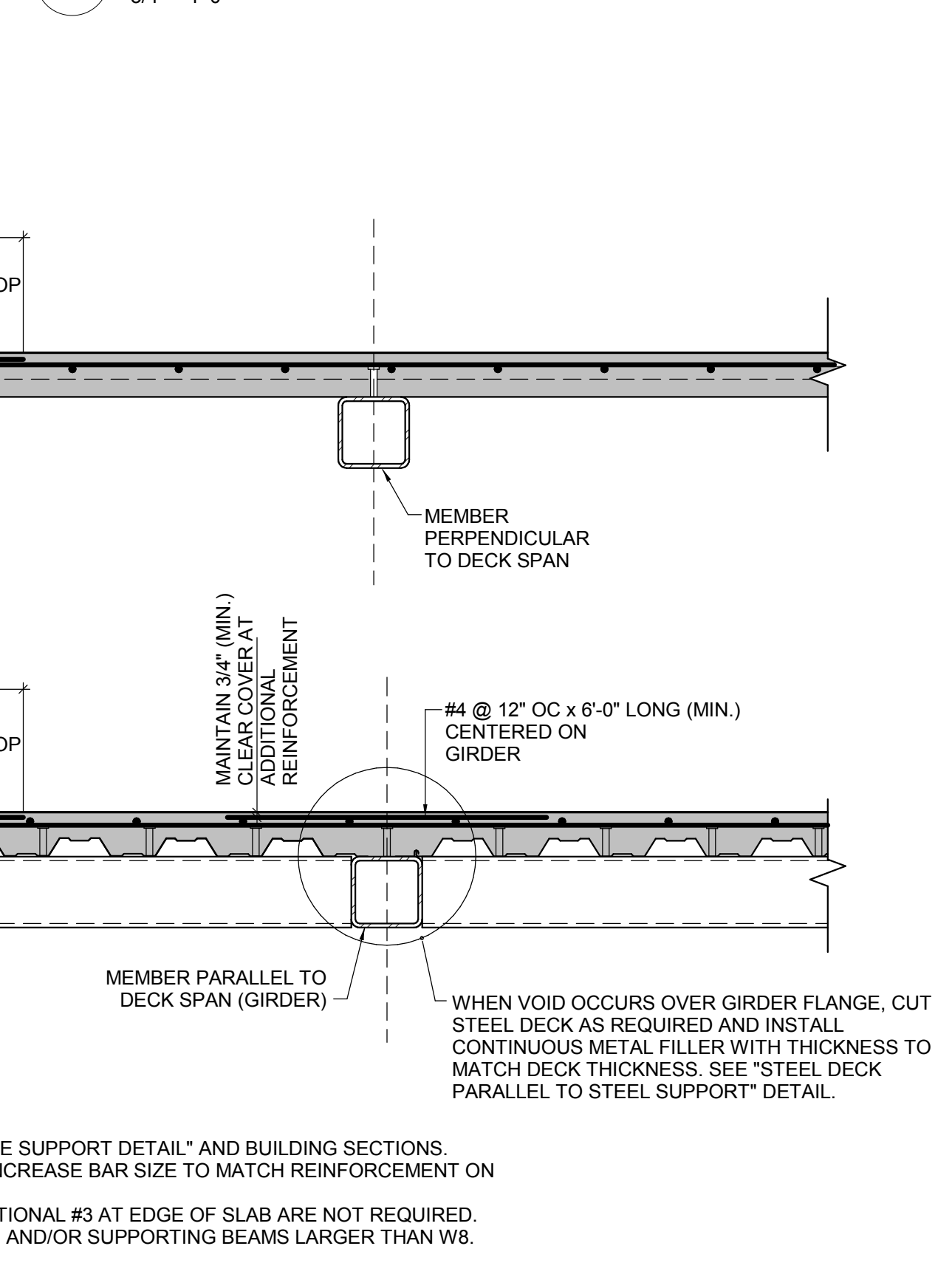
8 TYPICAL SLAB EDGE SUPPORT DETAIL



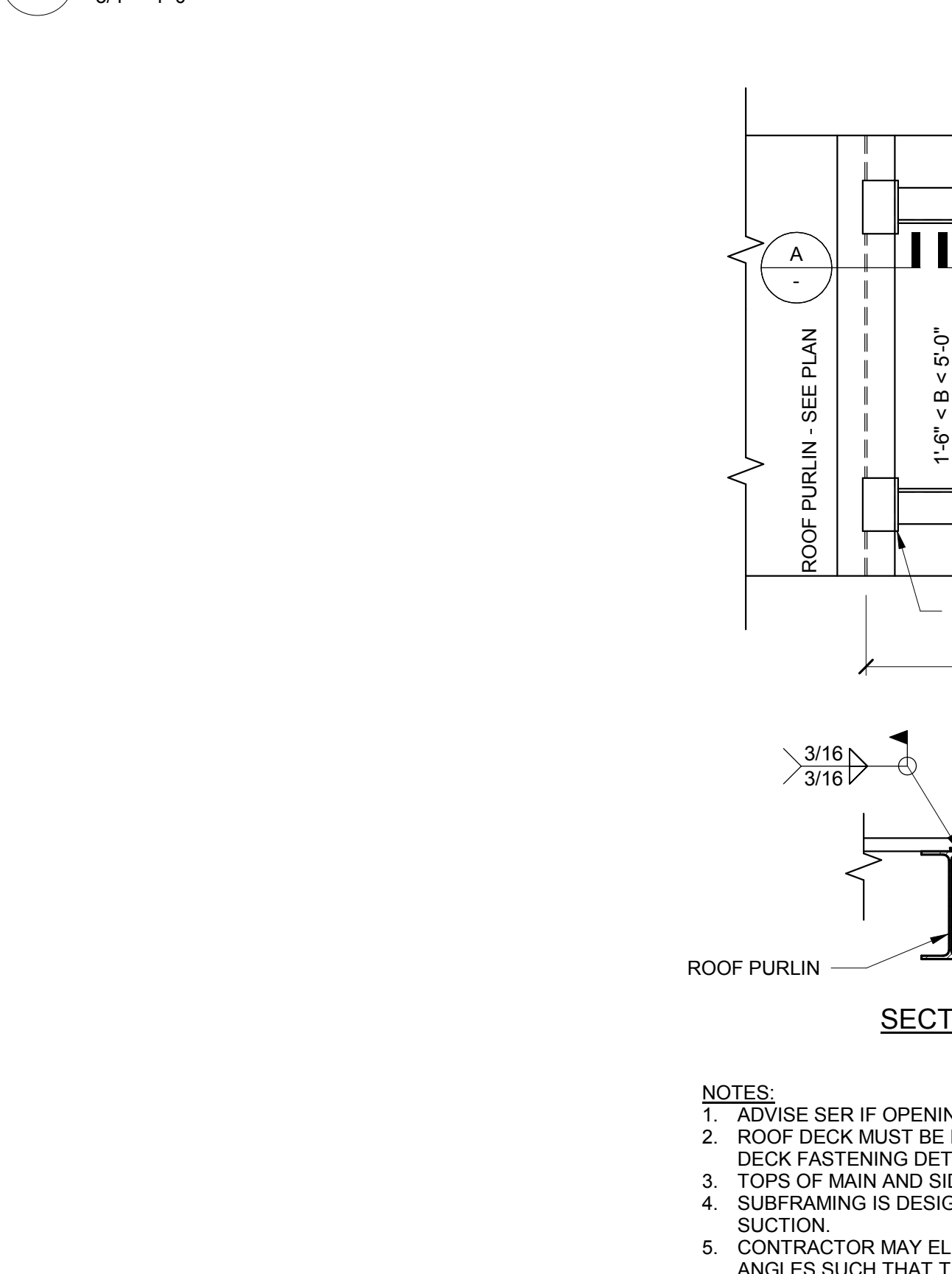
7 CONCRETE CURB ON COMPOSITE SLAB



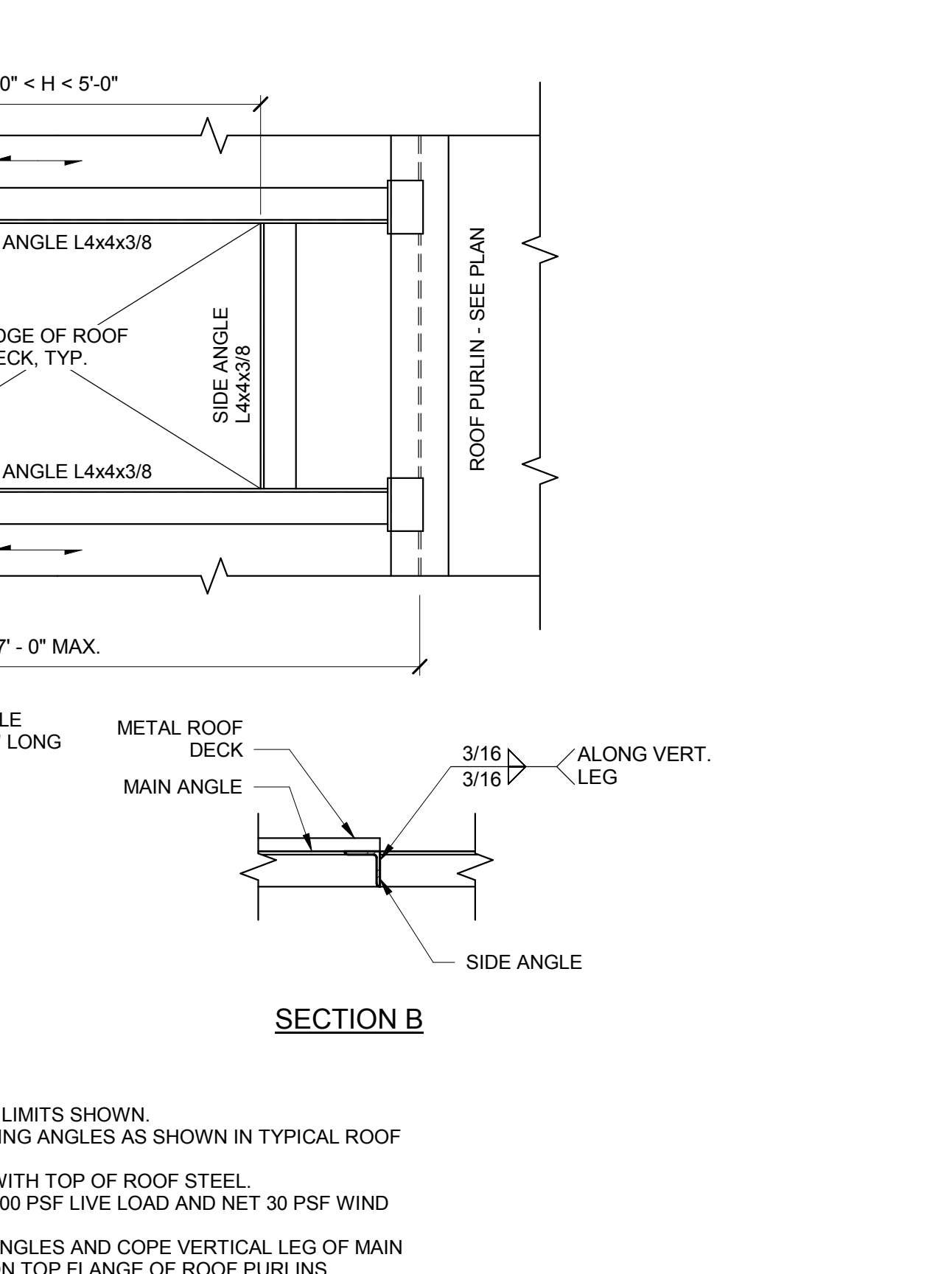
6 COMPOSITE SLAB REINFORCEMENT AND EDGE CONDITION DETAIL



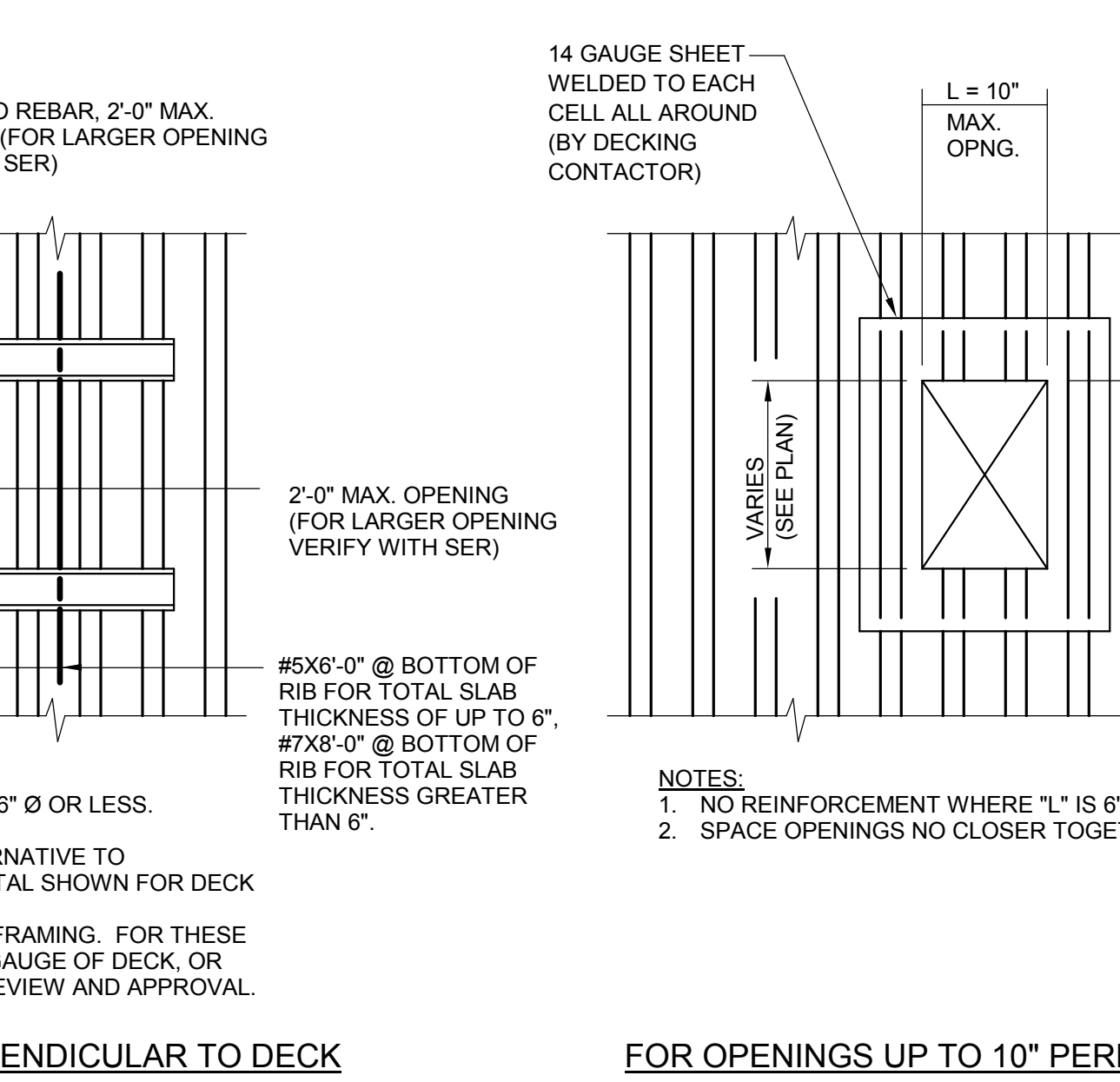
5 SUBFRAMING FOR ROOF OPENING LARGER THAN 1'-0" x 1'-6"



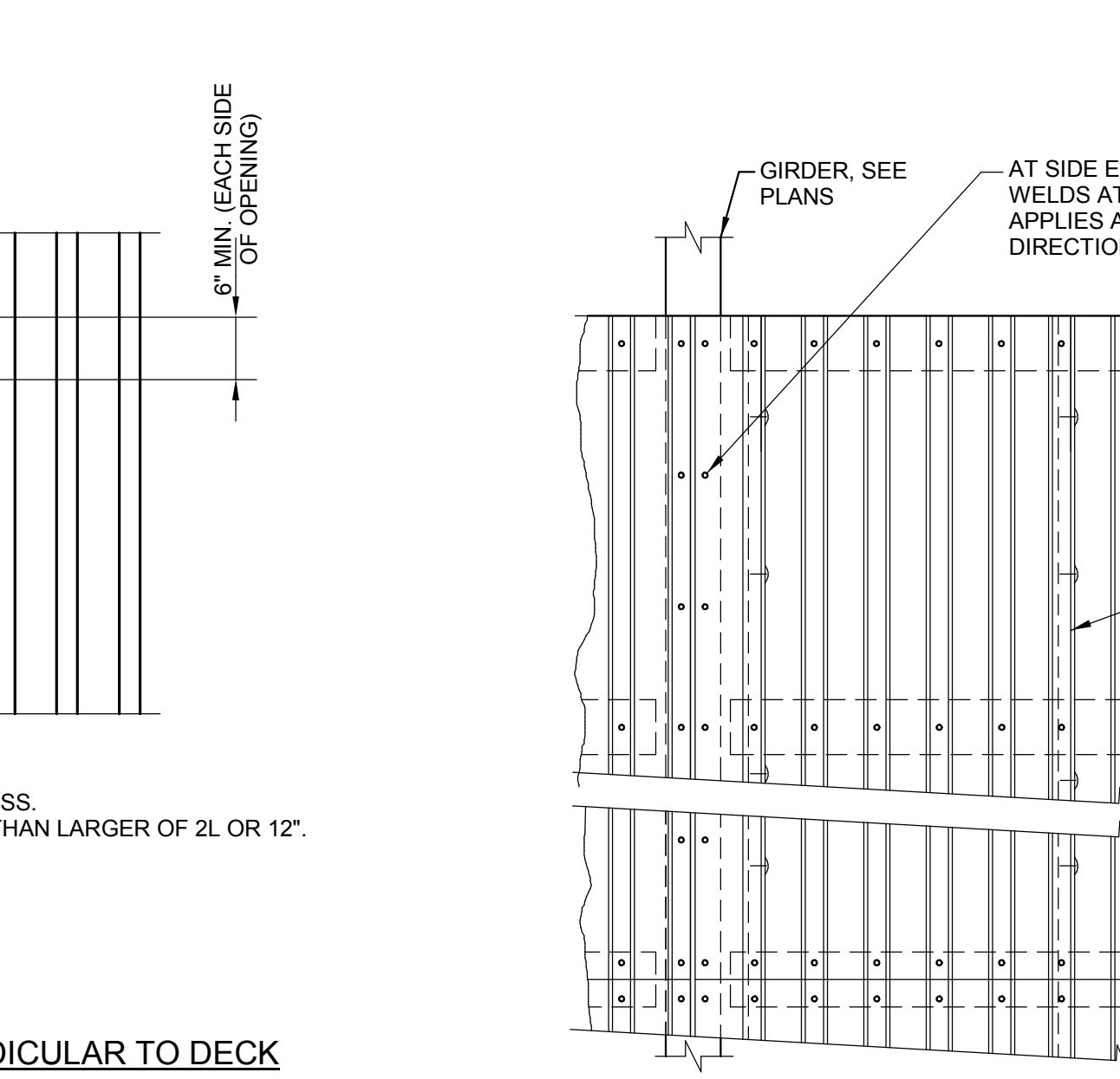
4 ROOF DECK OPENING REINFORCEMENT



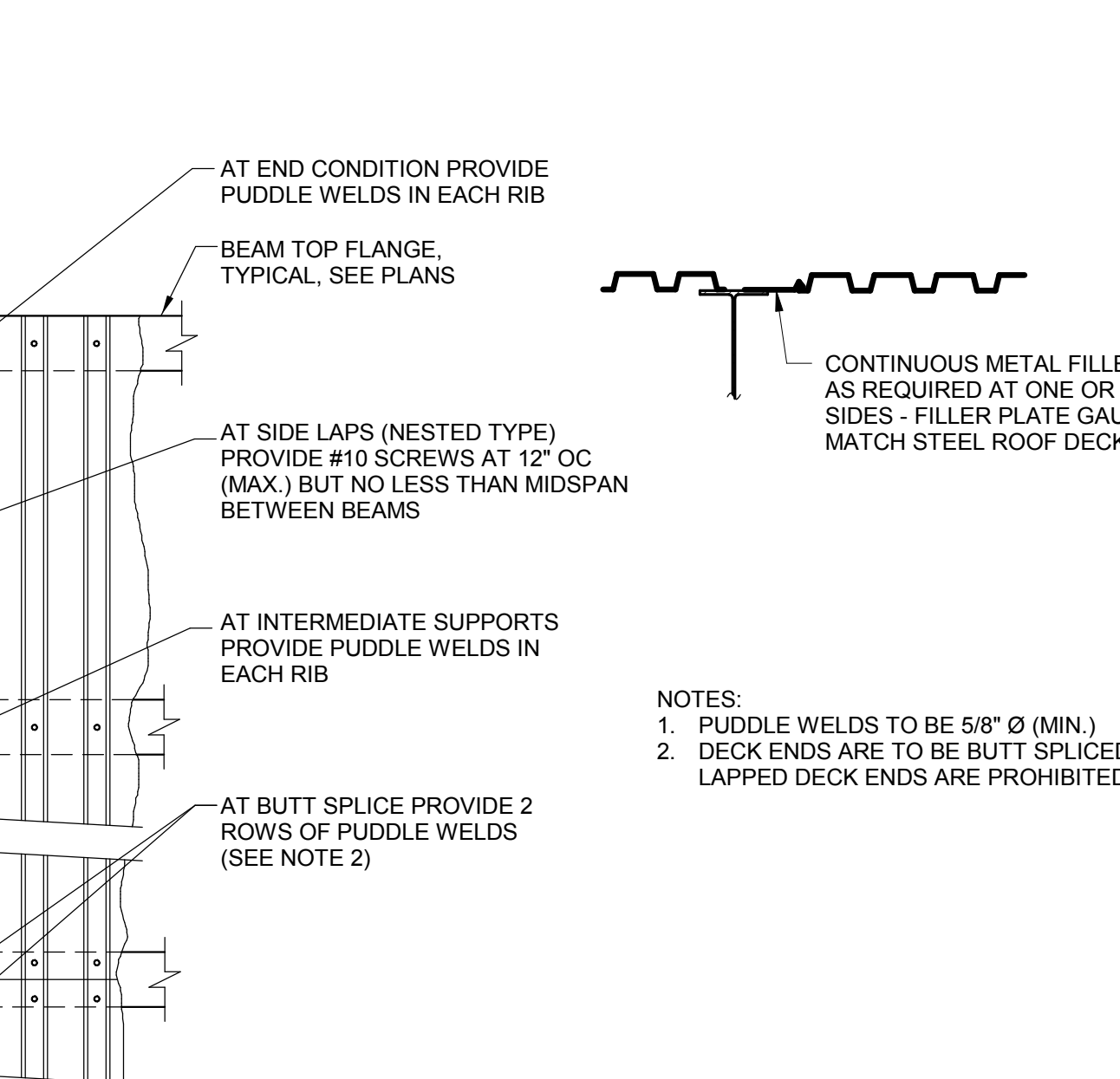
3 COMPOSITE FLOOR DECK REINFORCING AT OPENINGS



2 FASTENING PATTERN FOR 1 1/2" STEEL ROOF DECK



1 FASTENING PATTERN FOR COMPOSITE METAL FLOOR DECK



3/29/2018 10:11:52 AM I:\2018\180508.04\MaineMedicalCenter\152182.000\VISITOR GARAGE\2017 - STRUCT_1\MS00numbertent