

22 Bramhall Street
 Portland ME 04102

CONSULTANTS

CREATIVE LANDSCAPE ARCHITECT
Sebago Technics
 75 John Roberts Road, Suite 1A,
 South Portland, ME 04106

STRUCTURAL ENG. BUILDING ENVELOPE CONSULTANT
Simpson Gumpertz & Heger Inc.
 41 State Street, Building 1, Suite 500,
 Waltham, MA 02453

MEPP ENGINEER CODE
AKF Group LLC
 99 Bedford Street, 2nd Floor, Boston, MA 02111

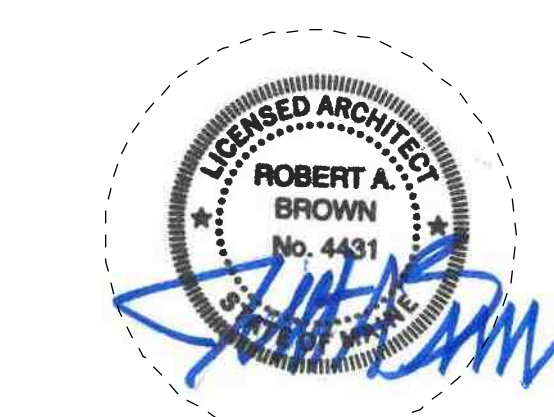
CONSTRUCTION MANAGER
Turner Construction
 2 Support Lane, Suite 200, Boston, MA 02210

ELEVATOR CONSULTANT
VDA (Van Deusen & Associates)
 101 Summer Street, 4th Floor, Boston, MA
 02110

COST ESTIMATOR
D. G. Jones International
 3 Bathen Green Common, Suite 202, Woburn, MA 01801

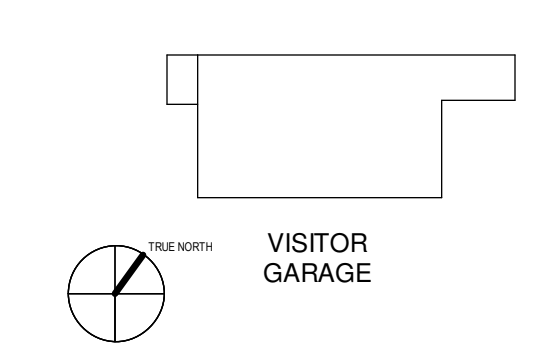
PROJECT TITLE

Visitor Garage Expansion
 22 Bramhall Street
 Portland ME 04102

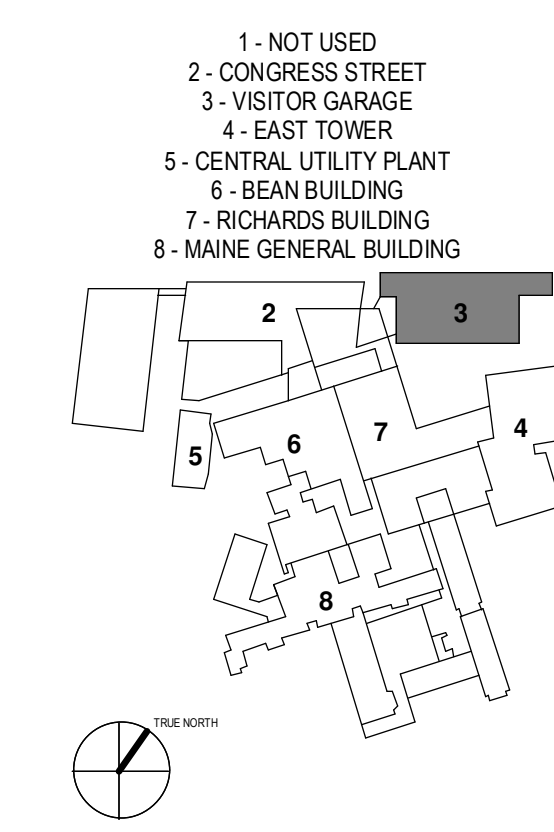


KEY PLANS

PROJECT KEY PLAN



OVERALL KEY PLAN



CONSTRUCTION DOCUMENT SET
 SEPTEMBER 29, 2017

PERMIT SET	03.29.16	
PERMIT SET	03.09.16	
NO.	ISSUE	DATE
Job Number	152182.000	
Drawn	TEAM	
Checked	DS/RIS	
Approved	JK	

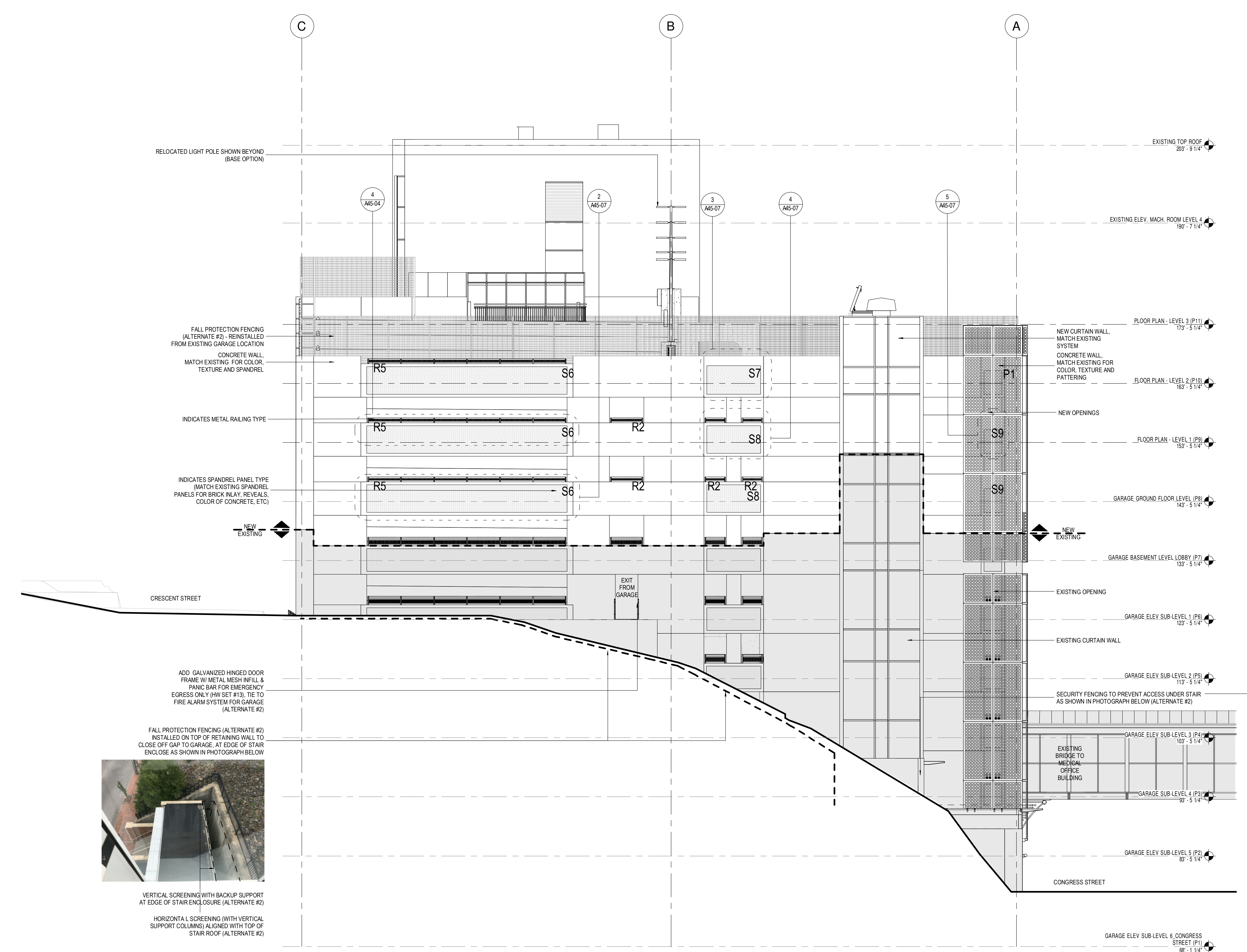
TITLE
EAST ELEVATION

SHEET NUMBER

A20-40

ELEVATION LEGEND

- F - FALL PROTECTION FENCING
- P - PERFORATED METAL PANELS (SQUARE HOLES), NORTH AND WEST ELEVATIONS
- R - MESH AND CHANNEL METAL RAILINGS (MOUNTED ON PRECAST SPANDRELS)
- S - PRECAST CONCRETE SPANDREL PANELS



1 EAST - ELEVATION
 1/8" = 1'-0"



SCREENING TO PREVENT ACCESS TO SPACE UNDER STAIR WITH THE FOLLOWING ATTRIBUTES:
 GALVANIZED METAL MESH AND TUBE SUPPORT, HINGED GATE WITH PANIC BAR TIED TO FIRE ALARM (HW SET #13), SEAL OFF SPACE UNDER BOTTOM RUN OF STAIRS, ANCHOR MAJOR SUPPORT TO VERTICAL STEEL TUBES AND PREVENTING CLIMBER FROM STAIR DOWN TO FLOOR SPACE (ALTERNATE #2)