

22 Bramhall Street
 Portland ME 04102

CONSULTANTS

CIVIL/LANDSCAPE ARCHITECT
Sebago Technics
 75 John Roberts Road, Suite 1A,
 South Portland, ME 04106

STRUCTURAL ENG./BUILDING ENVELOPE CONSULTANT
Simpson Gumpertz & Heger Inc.
 41 State Street, Building 1, Suite 500,
 Waltham, MA 02453

MEPP ENGINEER/ENGINEER CODE
AKF Group LLC
 99 Bedford Street, 2nd Floor, Boston, MA 02111

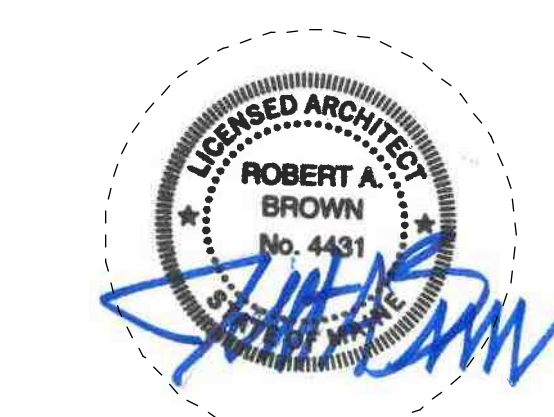
CONSTRUCTION MANAGER
Turner Construction
 2 Support Lane, Suite 200, Boston, MA 02210

ELEVATION CONSULTANT
VDA (Van Deusen & Associates)
 101 Summer Street, 4th Floor, Boston, MA
 02110

COST ESTIMATOR
D. G. Jones International
 3 Baldwin Green Common, Suite 202, Woburn, MA 01801

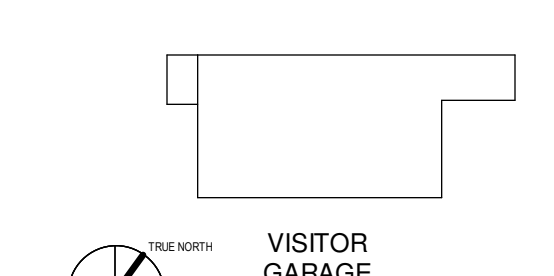
PROJECT TITLE

**Visitor Garage
 Expansion**
 22 Bramhall Street
 Portland ME 04102

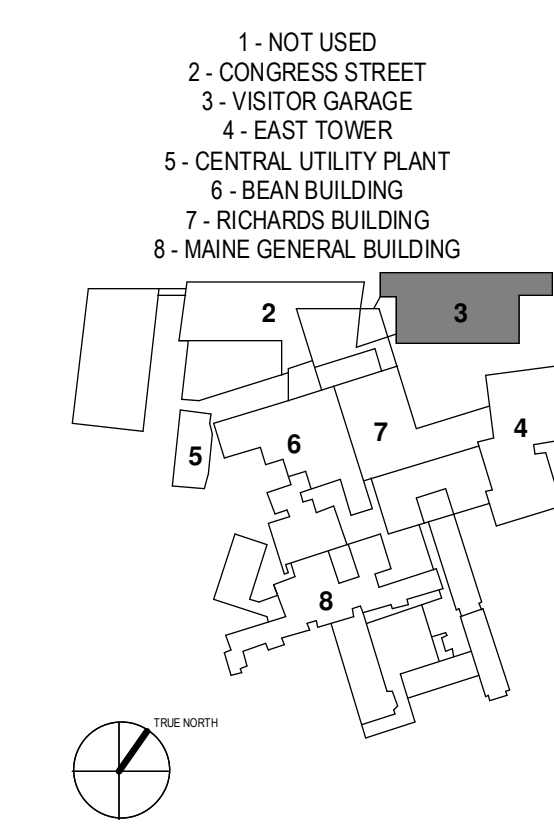


KEY PLANS

PROJECT KEY PLAN



OVERALL KEY PLAN



CONSTRUCTION DOCUMENT SET

PERMIT SET	03.28.18	
PERMIT SET	03.09.18	
NO.	ISSUE	DATE
Job Number	152182.000	
Drawn	TEAM	
Checked	DS/RIS	
Approved	JK	

TITLE

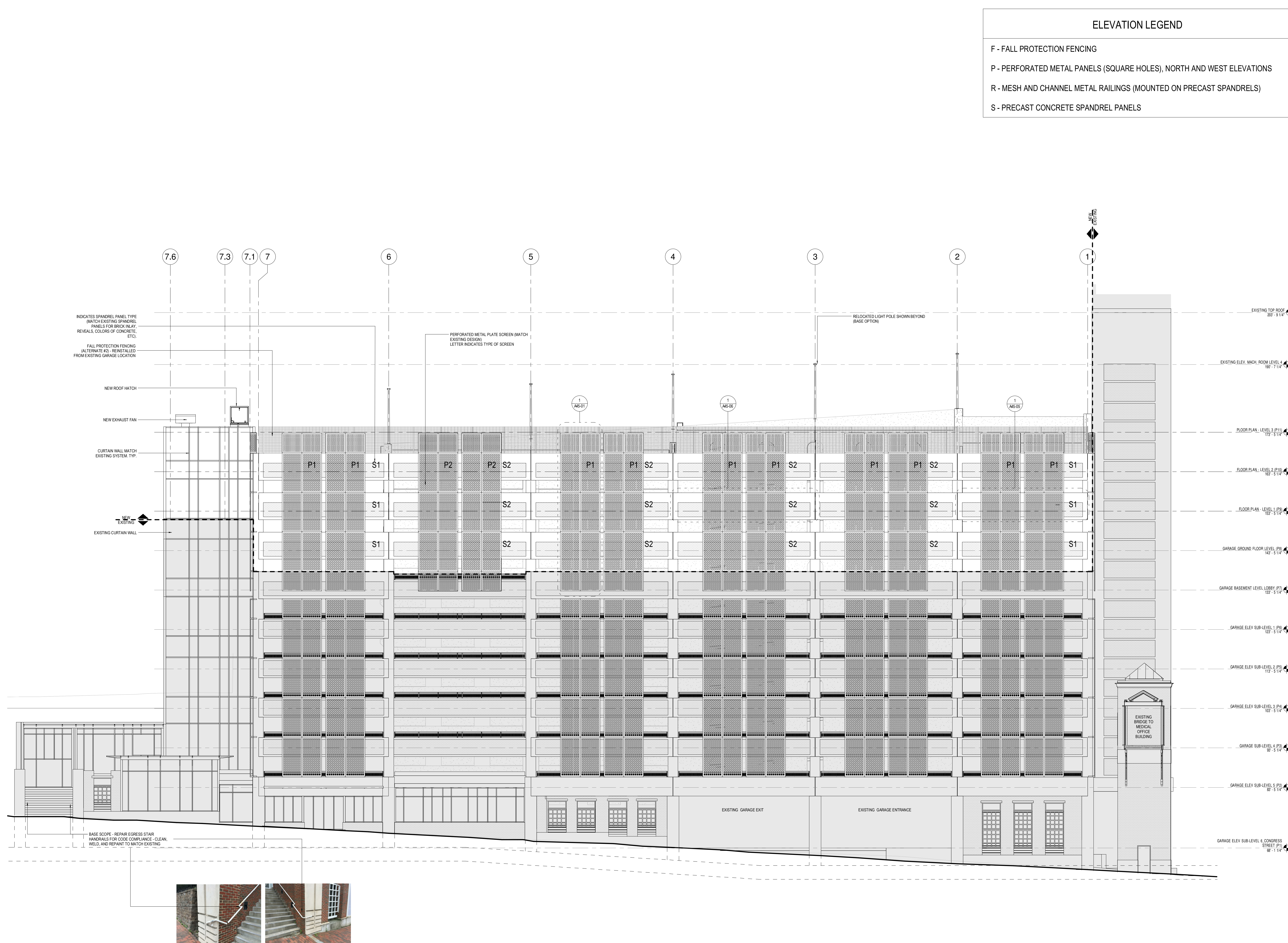
**NORTH
 ELEVATION**

SHEET NUMBER

A20-10

ELEVATION LEGEND

- F - FALL PROTECTION FENCING
- P - PERFORATED METAL PANELS (SQUARE HOLES), NORTH AND WEST ELEVATIONS
- R - MESH AND CHANNEL METAL RAILINGS (MOUNTED ON PRECAST SPANDRELS)
- S - PRECAST CONCRETE SPANDREL PANELS



1 NORTH - ELEVATION
 1/8" = 1'-0"

