

CONSULTANTS

CIVIL/LANDSCAPE ARCHITECT  
**Sebago Technics**  
 75 John Roberts Road, Suite 1A,  
 South Portland, ME 04106

STRUCTURAL ENVIRONMENTAL ENVELOPE CONSULTANT  
**Simpson Gumpertz & Heger Inc.**  
 41 Seay Street, Building 1, Suite 500,  
 Waltham MA 02453

MEPP ENGINEER CODE  
**AKF Group LLC**  
 99 Bedford Street, 2nd Floor, Boston MA 02111

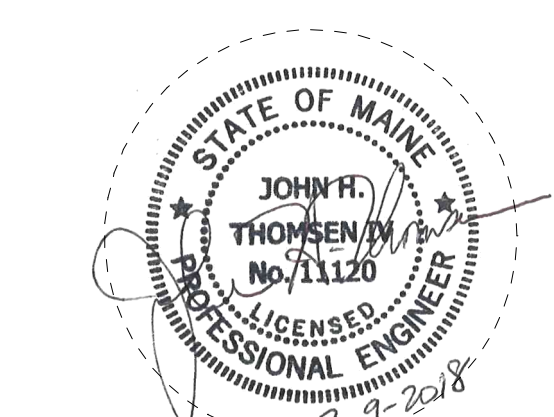
CONSTRUCTION MANAGER  
**Turner Construction**  
 2 Seaport Lane, Suite 200, Boston MA 02210

ELEVATOR CONSULTANT  
**VDA (Van Deusen & Associates)**  
 101 Summer Street, 4th Floor, Boston MA  
 02110

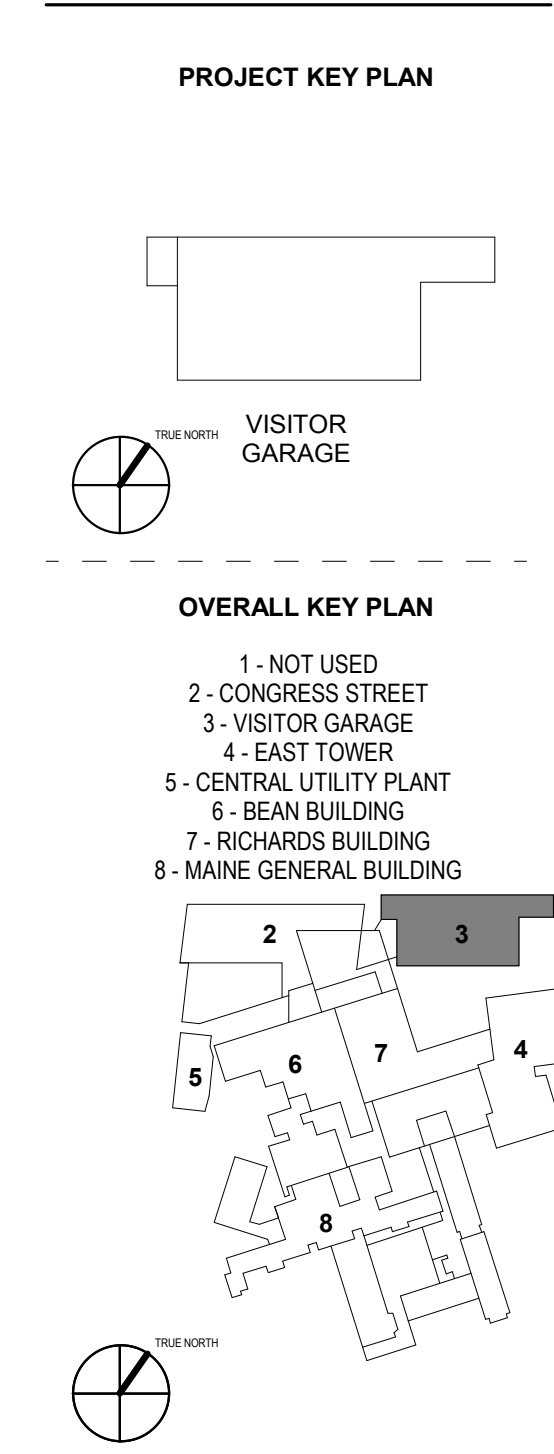
COST ESTIMATOR  
**D. G. Jones International**  
 3 Baldwin Green Common, Suite 202, Woburn MA 01801

PROJECT TITLE

**Visitor Garage Expansion**  
 22 Bramhall Street  
 Portland, ME 04102



KEY PLANS



CONSTRUCTION DOCUMENT SET

SEPTEMBER 29, 2017

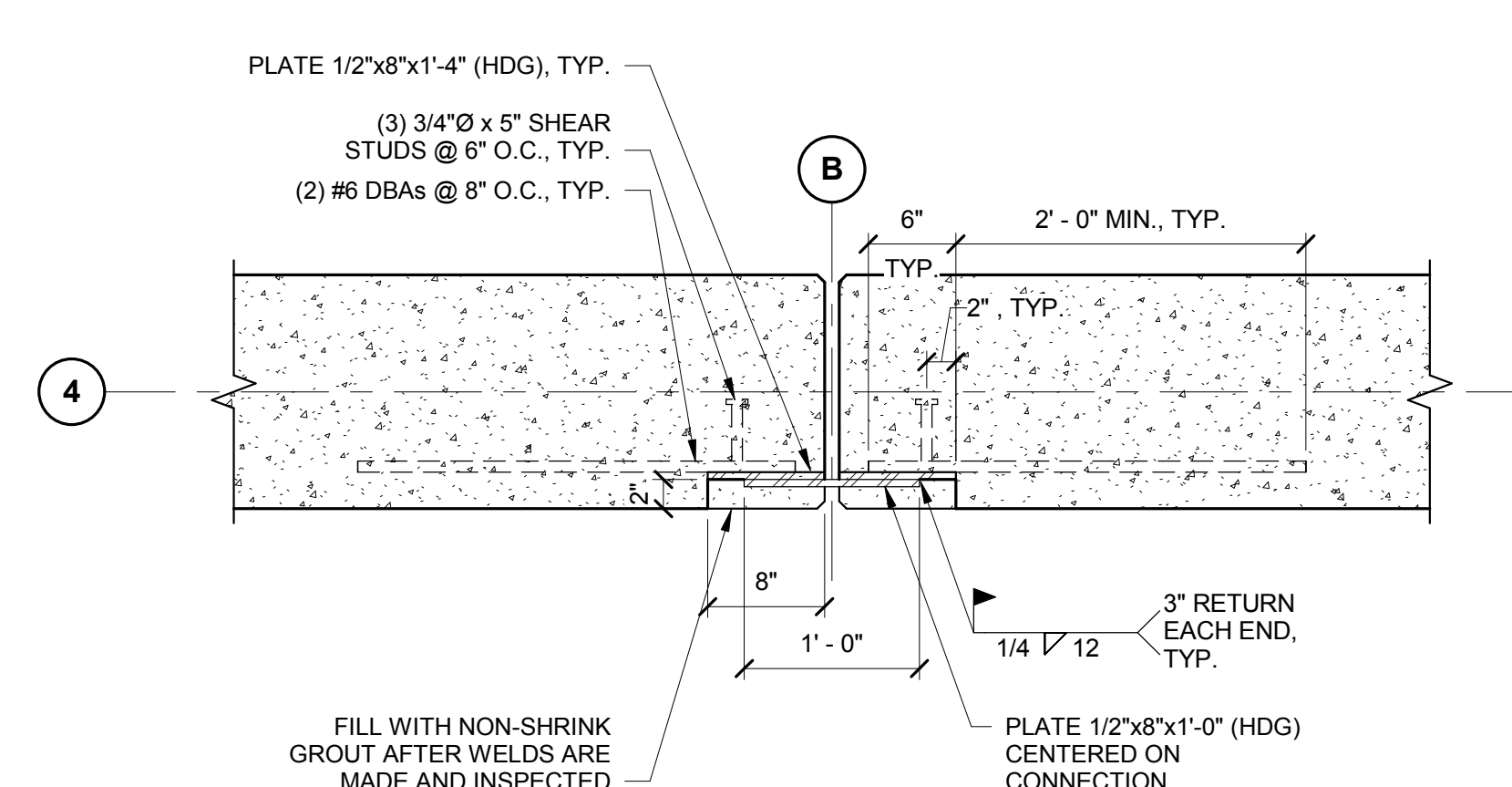
PERMIT SET	03.09.18
NO	ISSUE
NO	DATE
Job Number	152182.000
Drawn	NMS
Checked	BMT
Approved	JHT

TITLE

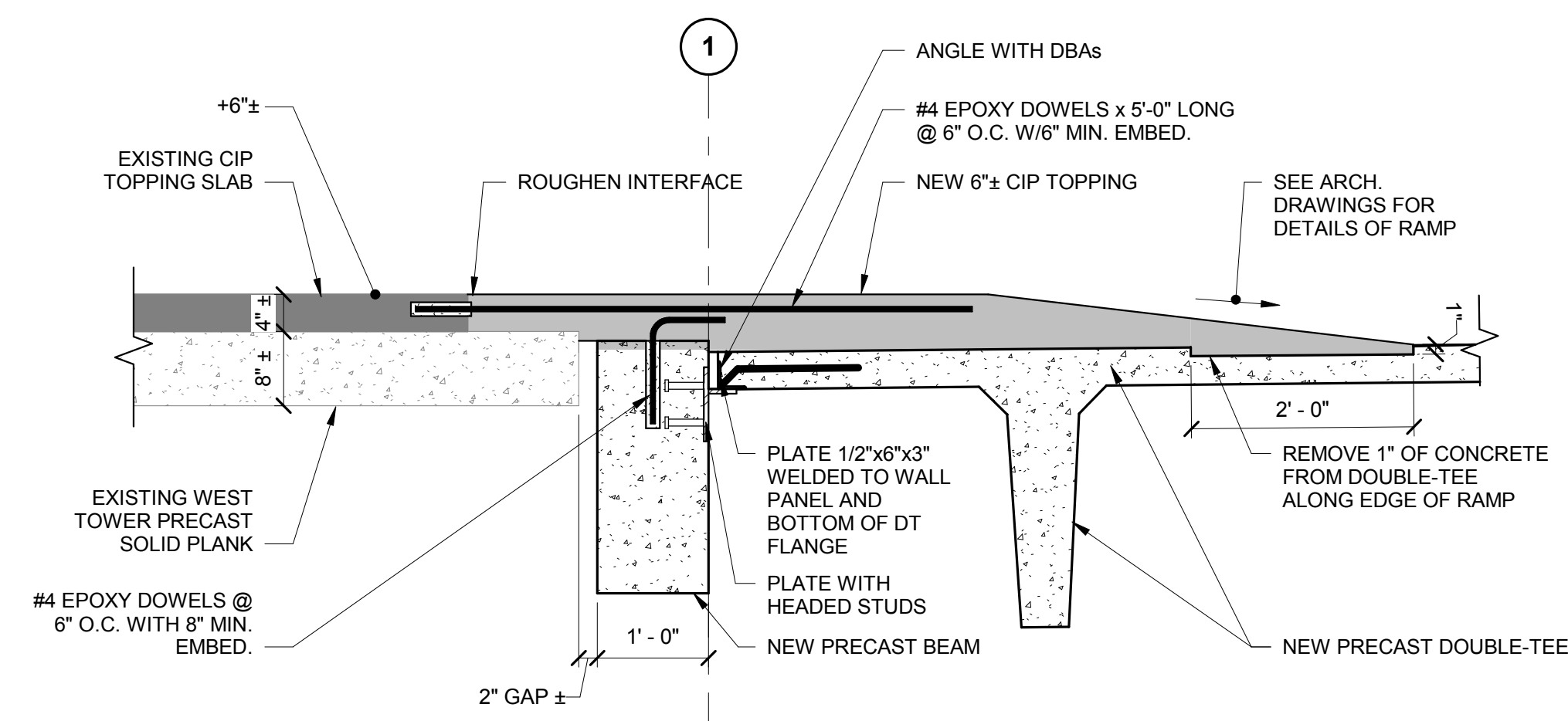
PRECAST DETAILS

SHEET NUMBER

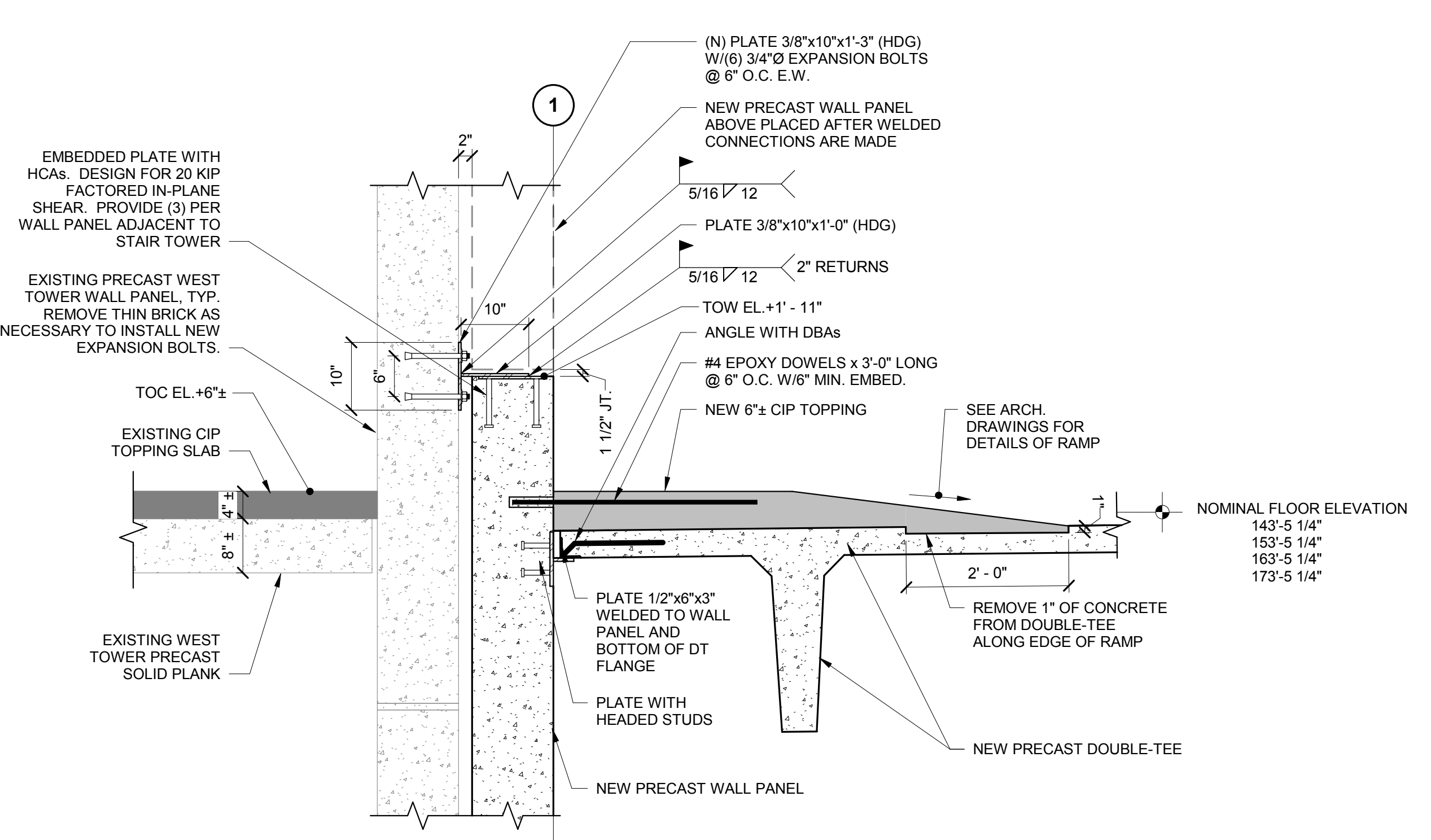
**S40-11**



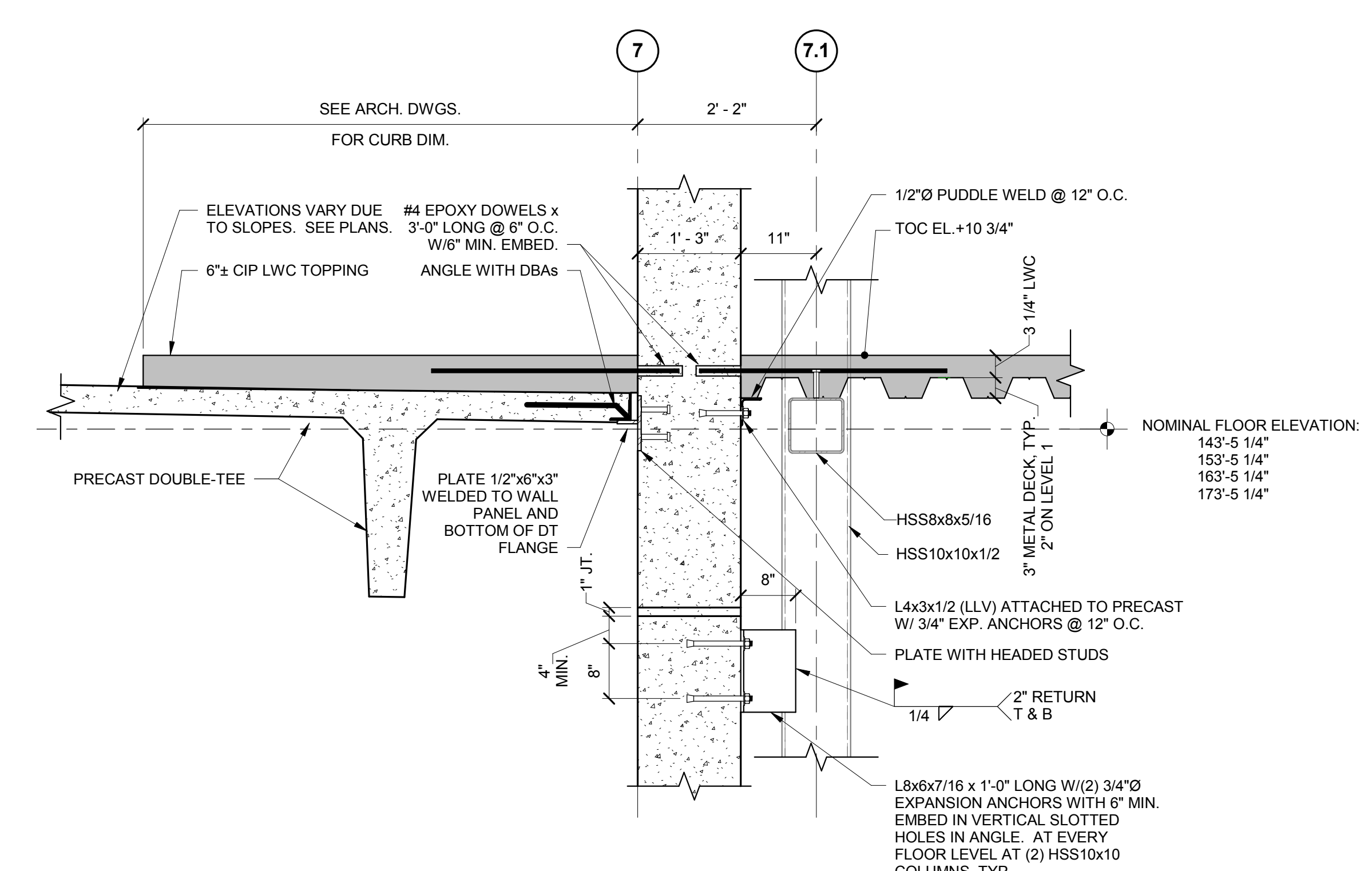
7 SHEAR WALL TIE CONNECTION  
 1" = 1'-0"



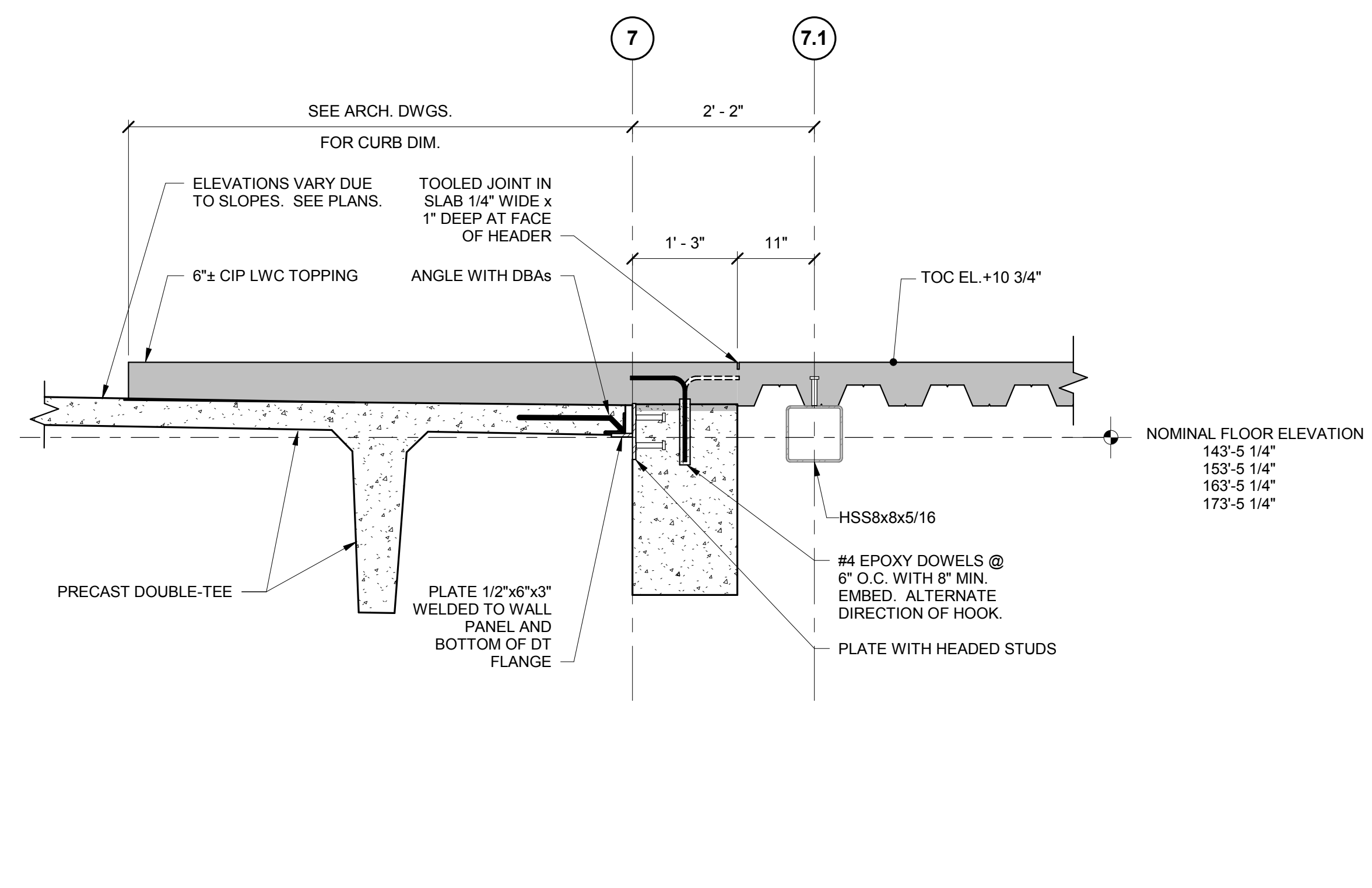
6 SECTION THRU DOOR OPENING BETWEEN WEST STAIR TOWER AND GARAGE  
 3/4" = 1'-0"



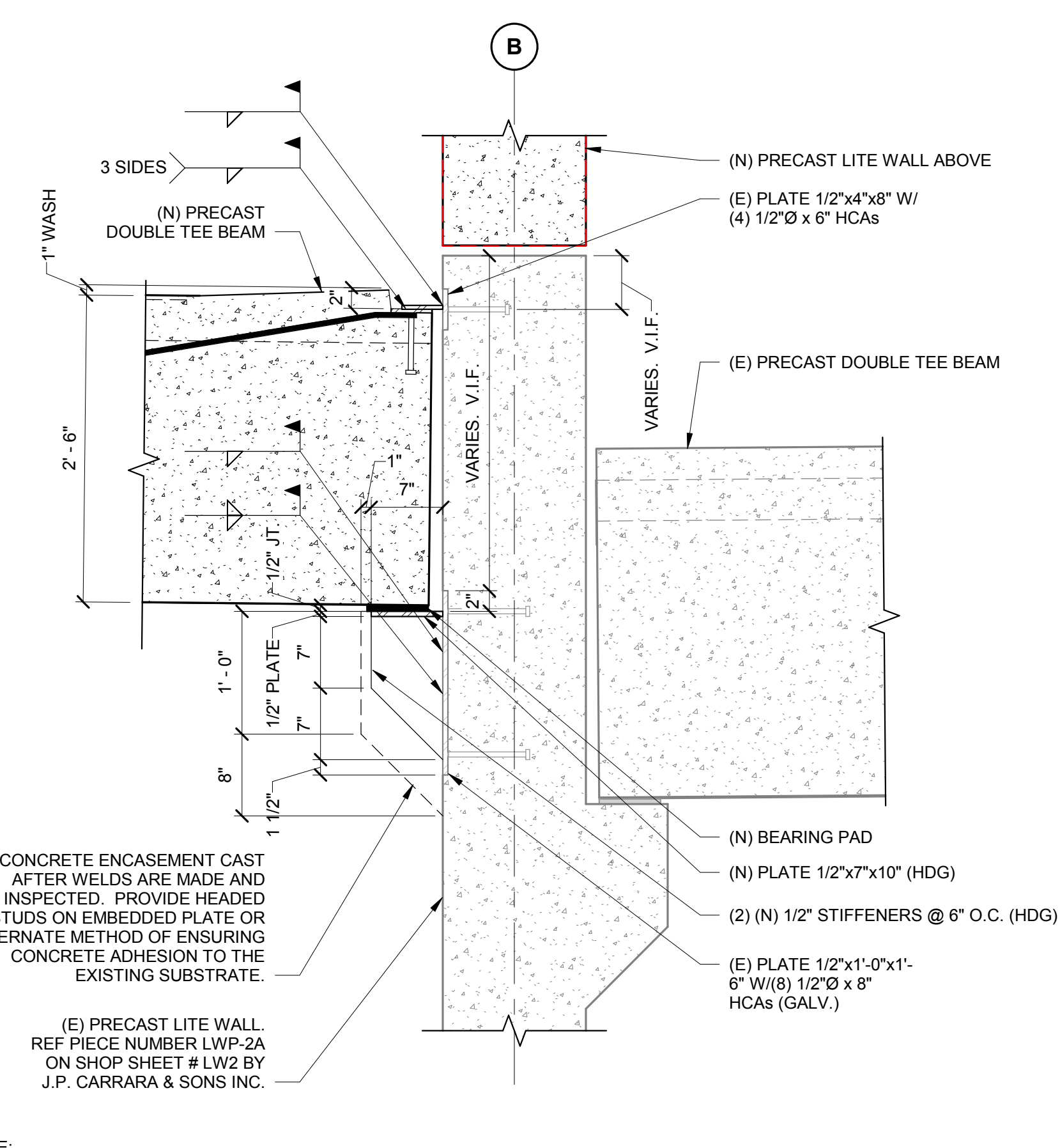
5 SECTION BETWEEN WEST STAIR TOWER AND GARAGE  
 3/4" = 1'-0"



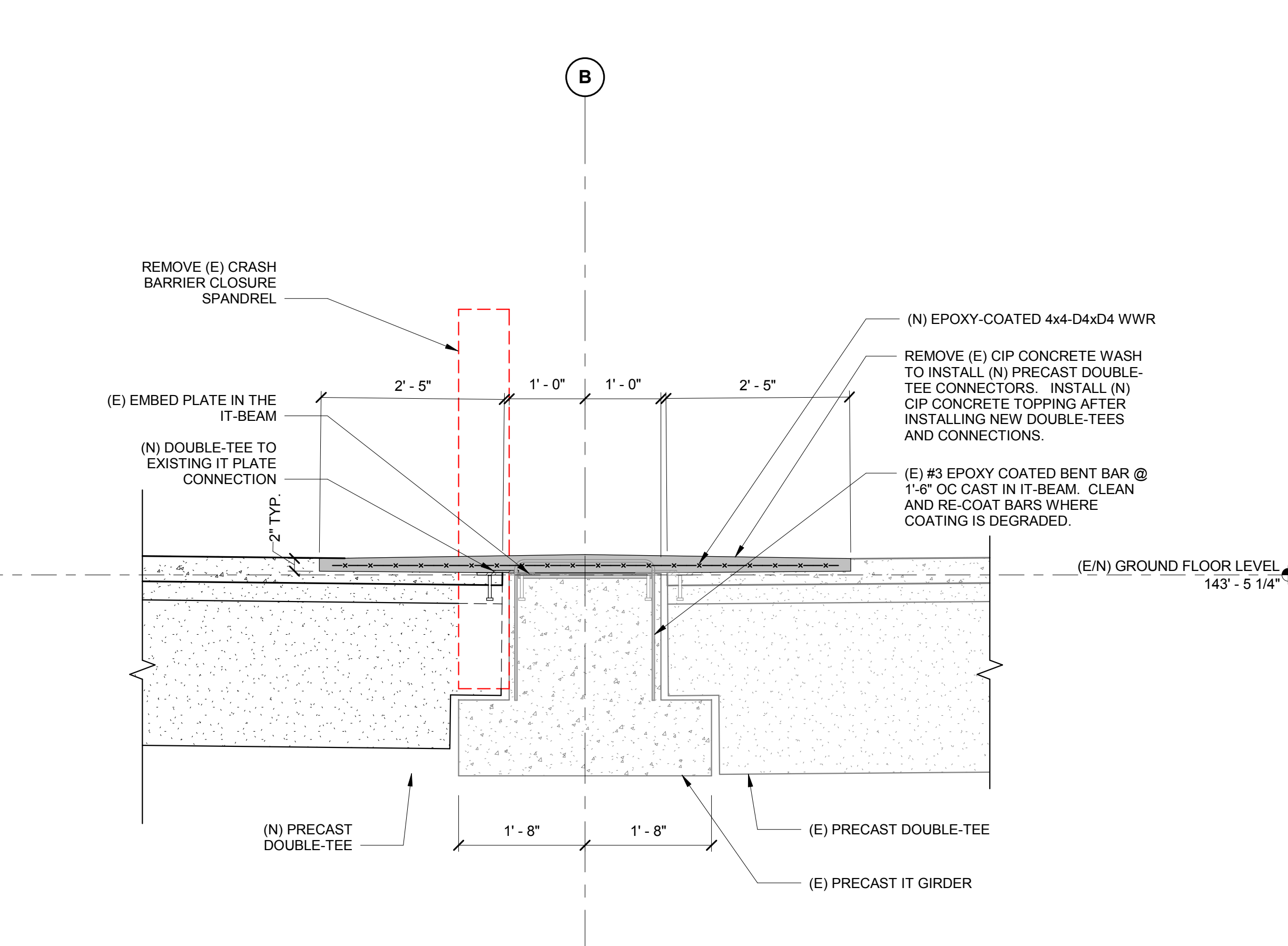
4 SECTION BETWEEN EAST STAIR AND GARAGE  
 3/4" = 1'-0"



3 SECTION THRU DOOR OPENING BETWEEN EAST STAIR AND GARAGE  
 3/4" = 1'-0"



2 DOUBLE TEE AT EXISTING LITE WALL  
 1" = 1'-0"



1 SECTION AT NEW DOUBLE TEE TO EXISTING INVERTED T-BEAM  
 3/4" = 1'-0"

3/20/18 2:24:58 PM  
 I:\605\Project\2017\152182.00\MaineMedicalCenter\2017\STRUCT\Misc\Numbered.rvt