

CONSULTANTS

CIVIL/LANDSCAPE ARCHITECT
Sebago Technics
 75 John Roberts Road, Suite 1A,
 South Portland, ME 04106

STRUCTURAL ENGR. BUILDING ENVELOPE CONSULTANT
Simpson Gumpertz & Heger Inc.
 41 Seyon Street, Building 1, Suite 500,
 Waltham MA 02453

MEPP ENGINEER/ CODE
AKF Group LLC
 99 Bedford Street, 2nd Floor, Boston MA 02111

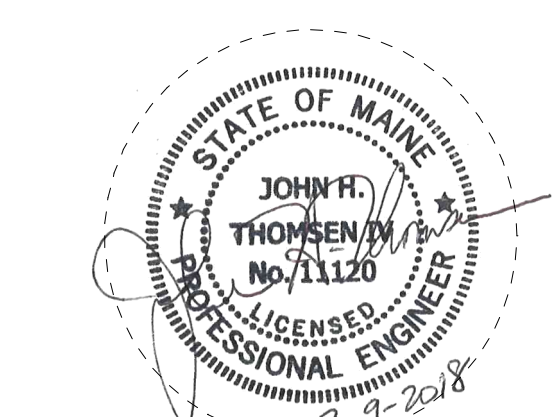
CONSTRUCTION MANAGER
Turner Construction
 2 Seaport Lane, Suite 200, Boston MA 02210

ELEVATOR CONSULTANT
VDA (Van Deusen & Associates)
 101 Summer Street, 4th Floor, Boston MA
 02110

COST ESTIMATOR
D. G. Jones International
 3 Baldwin Green Common, Suite 202, Woburn MA 01801

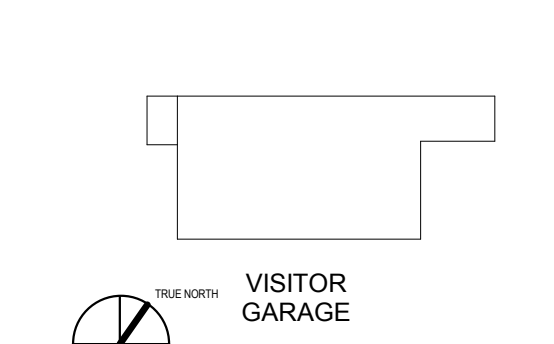
PROJECT TITLE

Visitor Garage Expansion
 22 Bramhall Street
 Portland, ME 04102

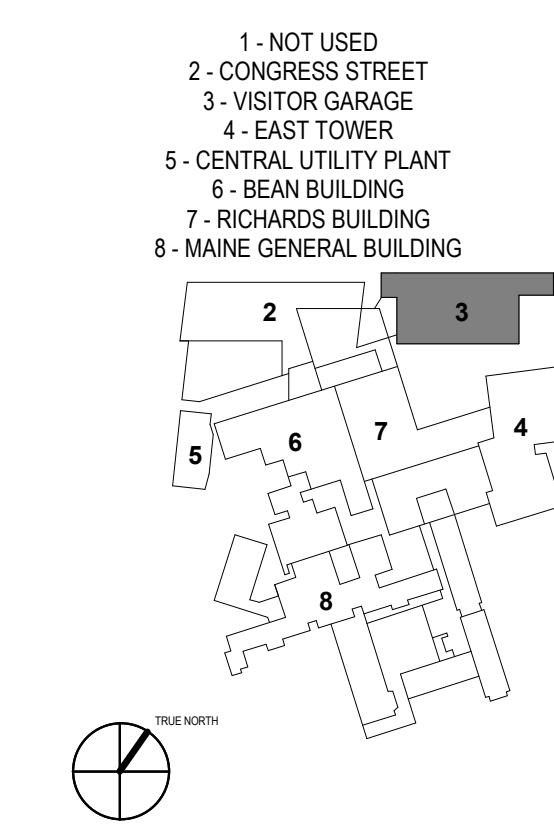


KEY PLANS

PROJECT KEY PLAN



OVERALL KEY PLAN



CONSTRUCTION DOCUMENT SET

SEPTEMBER 29, 2017

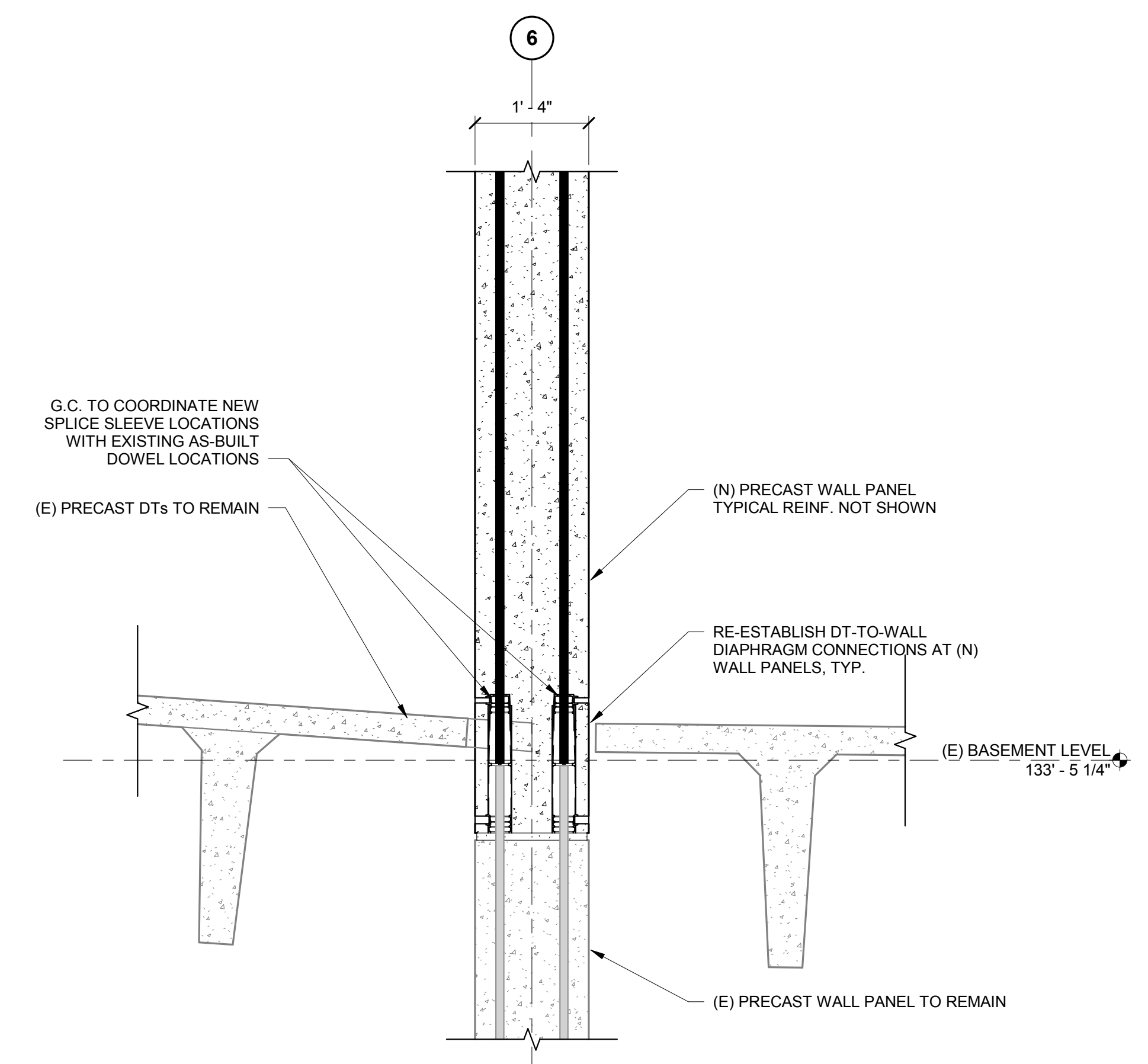
PERMIT SET	03.09.18	
NO	ISSUE	DATE
Job Number	152182.000	NMS
Drawn		NMS
Checked		BMT
Approved		JHT

TITLE

PRECAST DETAILS

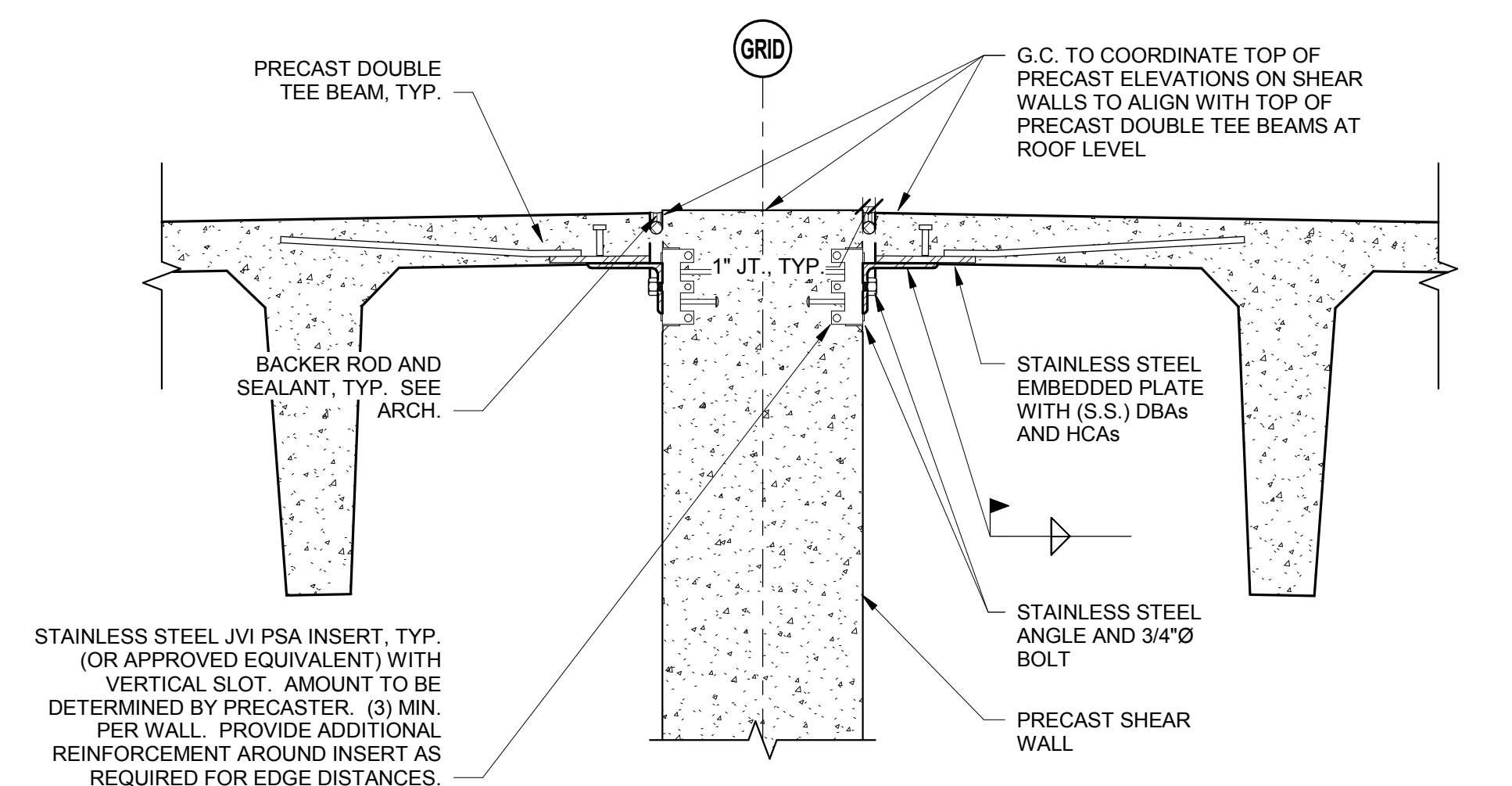
SHEET NUMBER

S40-10

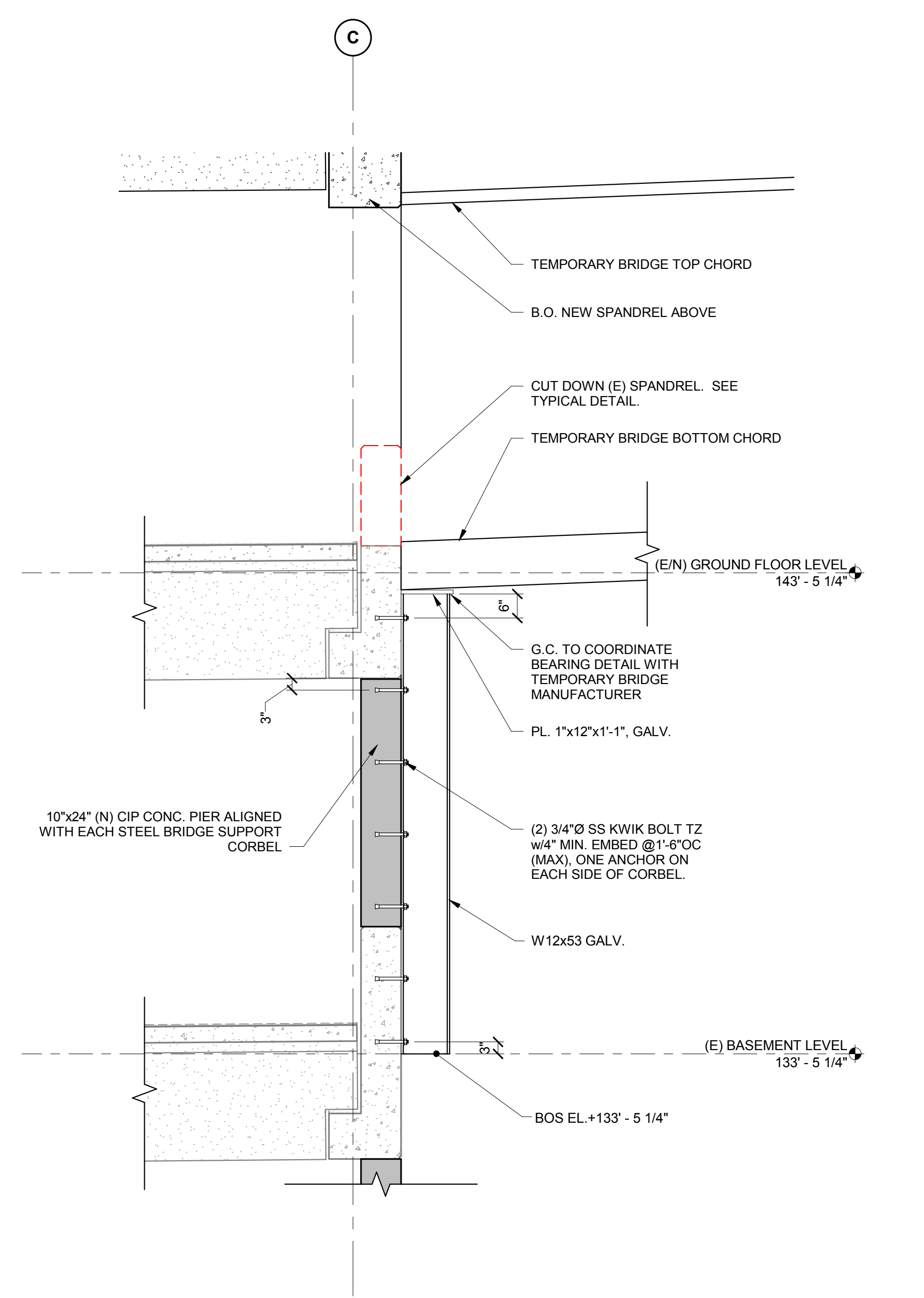


6 (N) PRECAST WALL PANEL ON (E) PRECAST WALL PANEL
 3/4" = 1'-0"

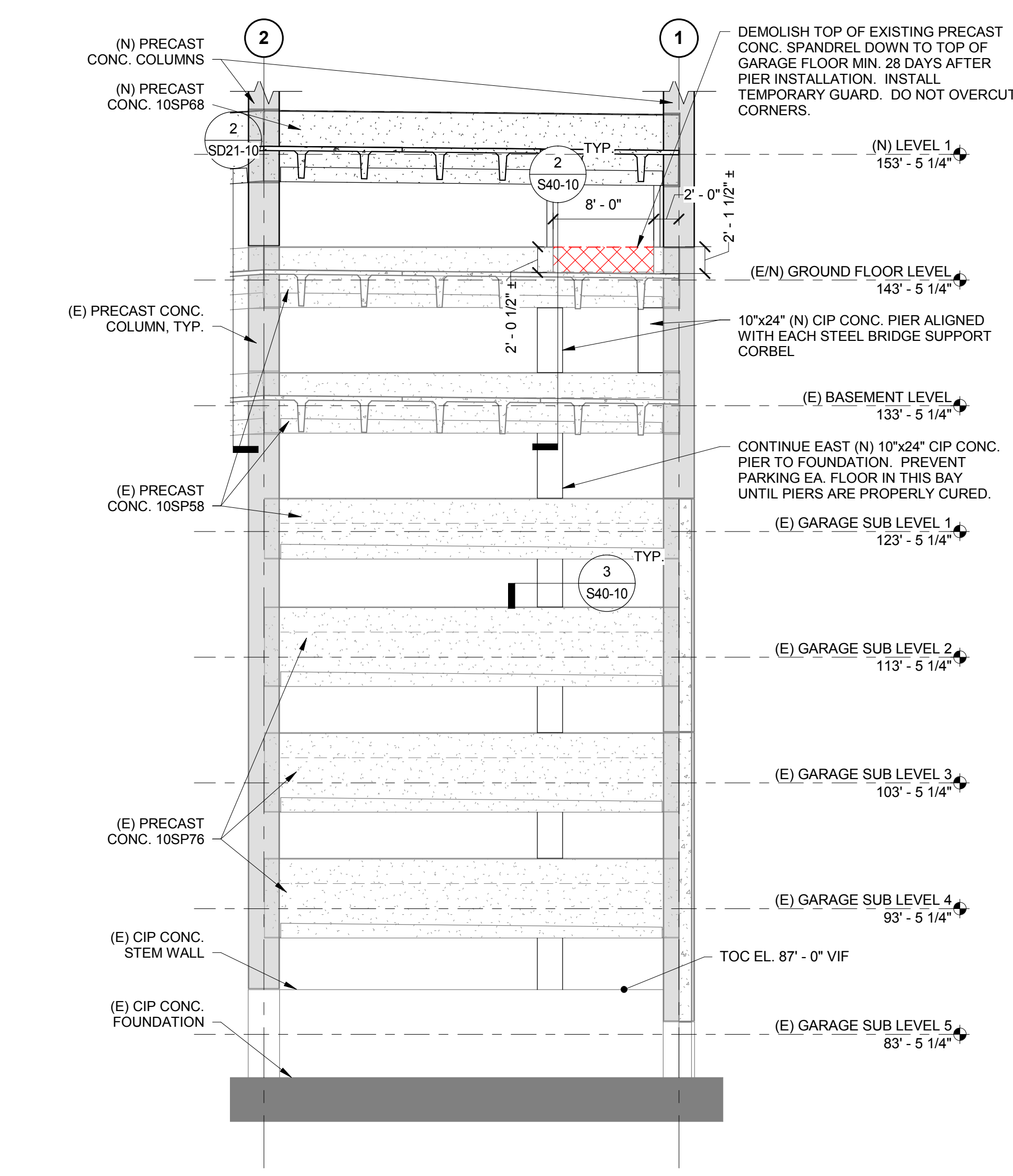
5 NOT USED
 3/4" = 1'-0"



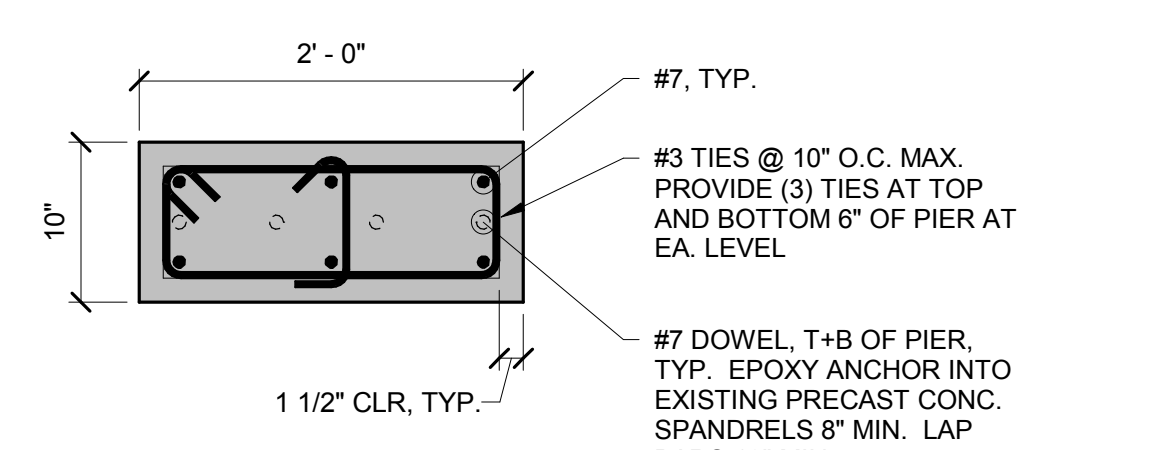
4 TYPICAL INTERIOR SHEAR WALL DETAIL AT NEW ROOF
 1" = 1'-0"



3 TEMPORARY BEAM BRIDGE SUPPORT
 1/2" = 1'-0"



1 PARTIAL ELEVATION AT FUTURE TEMPORARY BEAM CONNECTOR
 1/8" = 1'-0"



3 TYP. PIER REINF.
 1" = 1'-0"

3/20/18 2:24:54 PM
 I:\BOS\Project\2017\152182.00\MaineMedicalCenter\VISITOR GARAGE\2017 - STRUCT_M\30summander.rvt