

CONSULTANTS

CIVIL/LANDSCAPE ARCHITECT
 Sebago Technics
 75 John Roberts Road, Suite 1A,
 South Portland, ME 04106

STRUCTURAL ENGR. BUILDING ENVELOPE CONSULTANT
 Simpson Gumpertz & Heger Inc.
 41 Seyon Street, Building 1, Suite 500,
 Waltham, MA 02453

MEPP ENGINEERING CODE
 AKF Group LLC
 99 Bedford Street, 2nd Floor, Boston, MA 02111

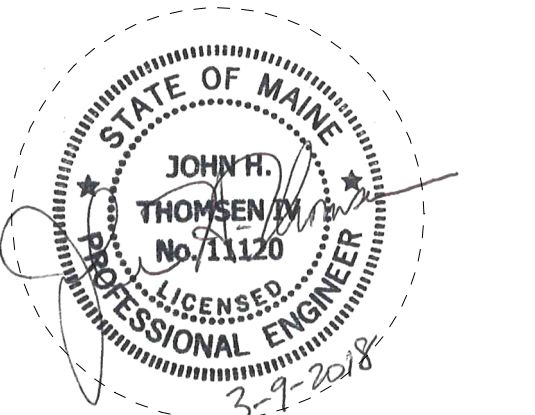
CONSTRUCTION MANAGER
 Turner Construction
 2 Seaport Lane, Suite 200, Boston, MA 02210

ELEVATOR CONSULTANT
 VDA (Van Deusen & Associates)
 101 Summer Street, 4th Floor, Boston, MA
 02110

COST ESTIMATOR
 D. G. Jones International
 3 Baldwin Green Common, Suite 202, Woburn, MA 01801

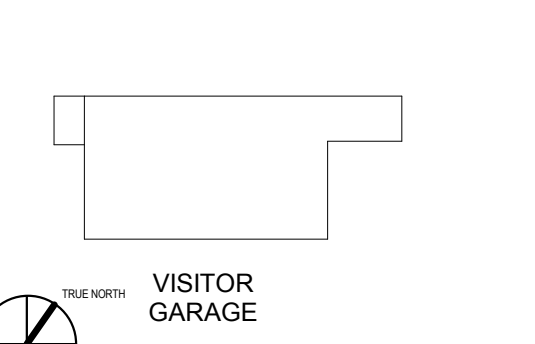
PROJECT TITLE

**Visitor Garage
 Expansion**
 22 Bramhall Street
 Portland, ME 04102



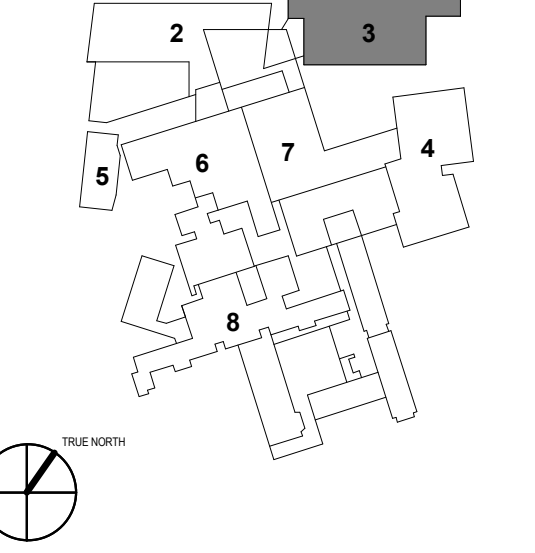
KEY PLANS

PROJECT KEY PLAN



OVERALL KEY PLAN

- 1 - NOT USED
- 2 - CONGRESS STREET
- 3 - VISITOR GARAGE
- 4 - EAST TOWER
- 5 - CENTRAL UTILITY PLANT
- 6 - BEAN BUILDING
- 7 - RICHARDS BUILDING
- 8 - MAINE GENERAL BUILDING



CONSTRUCTION DOCUMENT SET

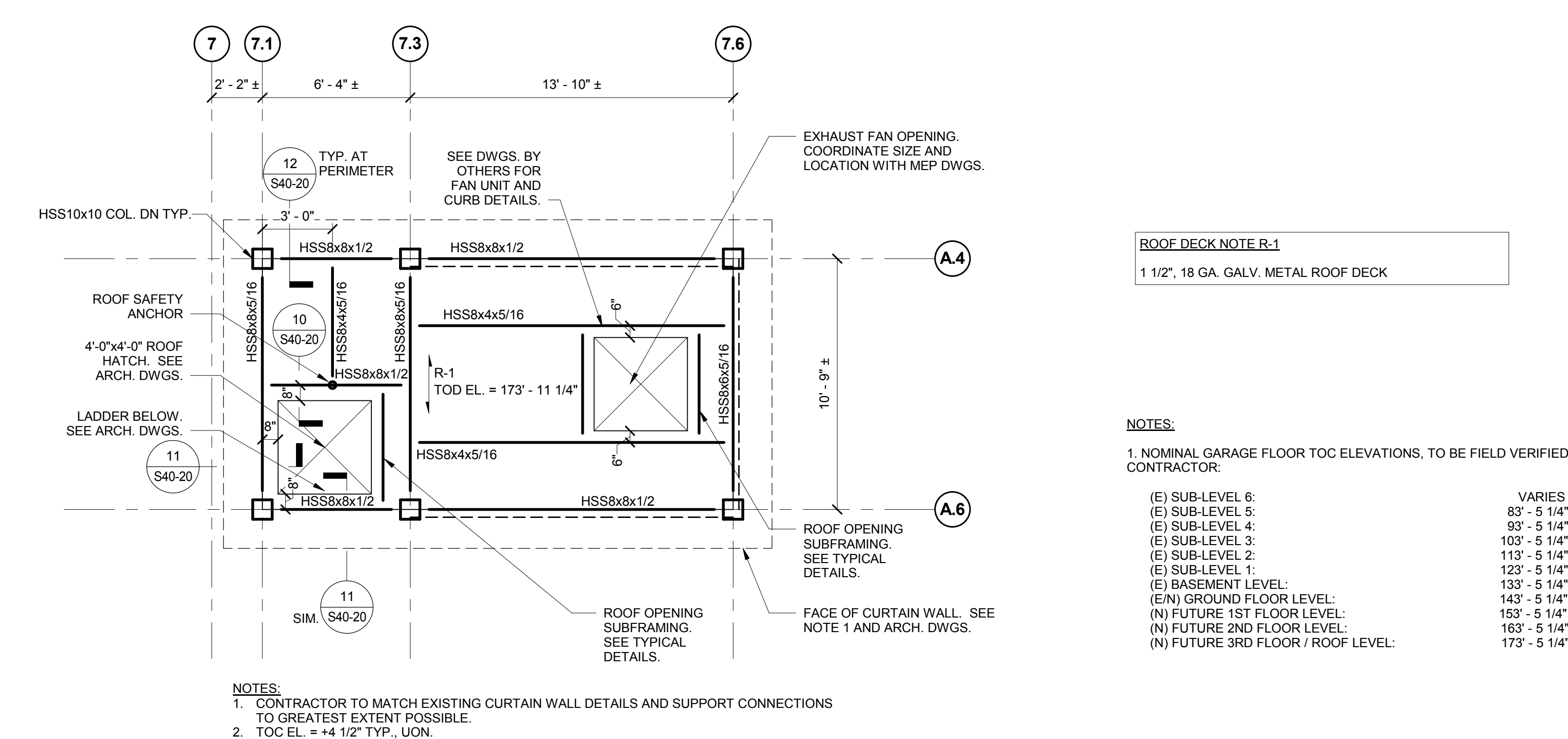
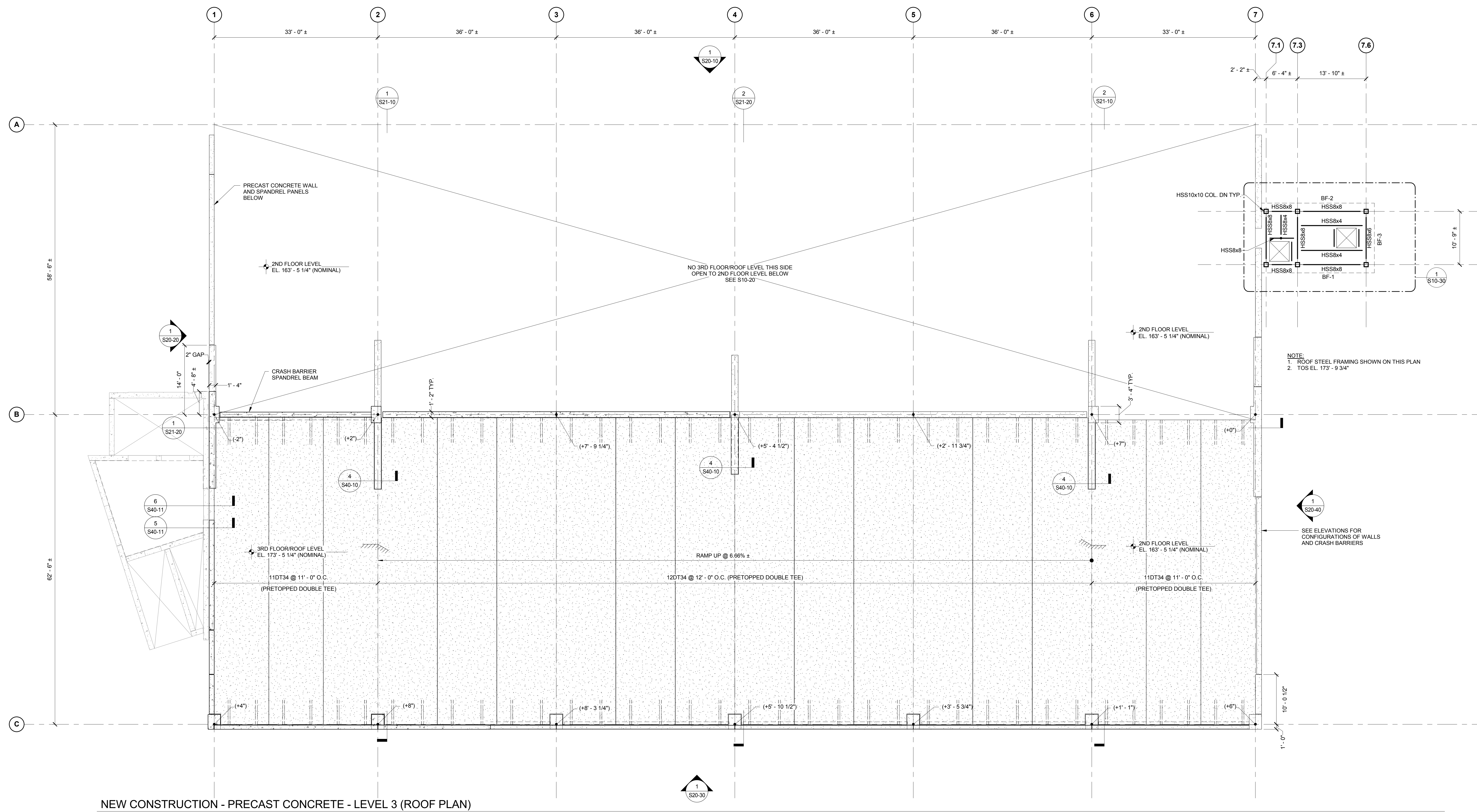
SEPTEMBER 29, 2017

PERMIT SET	03.09.18	
NO.	ISSUE	DATE
Job Number	152182.000	
Drawn	NWS	
Checked	BMT	
Approved	JHT	

FLOOR PLAN - LEVEL 3

SHEET NUMBER

S10-30



ROOF DECK NOTE B-1
 1 1/2", 18 GA. GALV. METAL ROOF DECK

- NOTES:**
1. NOMINAL GARAGE FLOOR TOC ELEVATIONS, TO BE FIELD VERIFIED BY CONTRACTOR.
 - (E) SUB-LEVEL 6: VARIES
 - (E) SUB-LEVEL 5: 83' - 5 1/4"
 - (E) SUB-LEVEL 4: 103' - 5 1/4"
 - (E) SUB-LEVEL 3: 103' - 5 1/4"
 - (E) SUB-LEVEL 2: 113' - 5 1/4"
 - (E) SUB-LEVEL 1: 123' - 5 1/4"
 - (E) BASEMENT LEVEL: 133' - 5 1/4"
 - (E)N/ GROUND FLOOR LEVEL: 143' - 5 1/4"
 - (N) FUTURE 1ST FLOOR LEVEL: 153' - 5 1/4"
 - (N) FUTURE 2ND FLOOR LEVEL: 163' - 5 1/4"
 - (N) FUTURE 3RD FLOOR LEVEL: 173' - 5 1/4"

3/20/18 2:24:28 PM
 I:\2018\201809\152182.00\20180915\152182.00\VISITOR GARAGE\2017 - STRUCT - NWS\sumner.dwg