

CONSULTANTS

CIVIL/LANDSCAPE ARCHITECT  
**Sebago Technics**

75 John Roberts Road, Suite 1A,  
South Portland, ME 04106

STRUCTURAL ENGR. BUILDING ENVELOPE CONSULTANT  
**Simpson Gumpertz & Heger Inc.**

41 Seay Street, Building 1, Suite 500,  
Waltham MA 02453

MEPP ENGINEER CODE  
**AKF Group LLC**

99 Bedford Street, 2nd Floor, Boston MA 02111

CONSTRUCTION MANAGER  
**Turner Construction**

2 Seaport Lane, Suite 200, Boston MA 02210

ELEVATOR CONSULTANT  
**VDA (Van Deusen & Associates)**

101 Summer Street, 4th Floor, Boston MA  
02110

COST ESTIMATOR  
**D. G. Jones International**

3 Baldwin Green Common, Suite 202, Woburn MA 01801

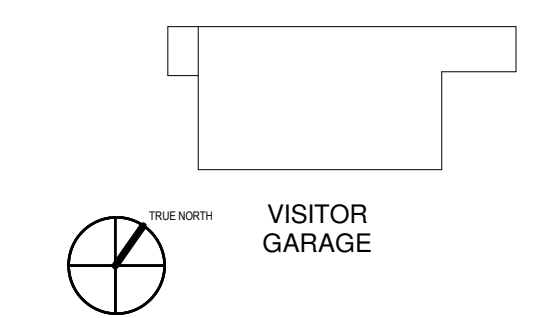
PROJECT TITLE

**Visitor Garage  
Expansion**  
22 Bramhall Street  
Portland ME 04102

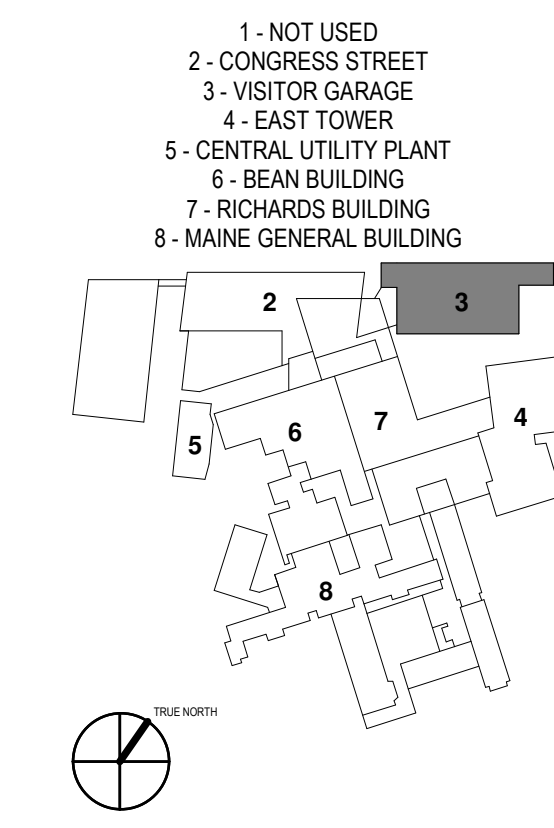


KEY PLANS

PROJECT KEY PLAN



OVERALL KEY PLAN



CONSTRUCTION DOCUMENT SET

SEPTEMBER 29, 2017

NO	ISSUE	DATE
3	PERMIT SET	03.09.18
3	ADDENDUM #3	02.27.18
2	ADDENDUM #2	01.09.18
1	ADDENDUM #1	12.05.17
NO	ISSUE	DATE
Job Number	152182-000	TEAM
Drawn		DSRS
Checked		JK
Approved		

TITLE

**WEST ELEVATION**

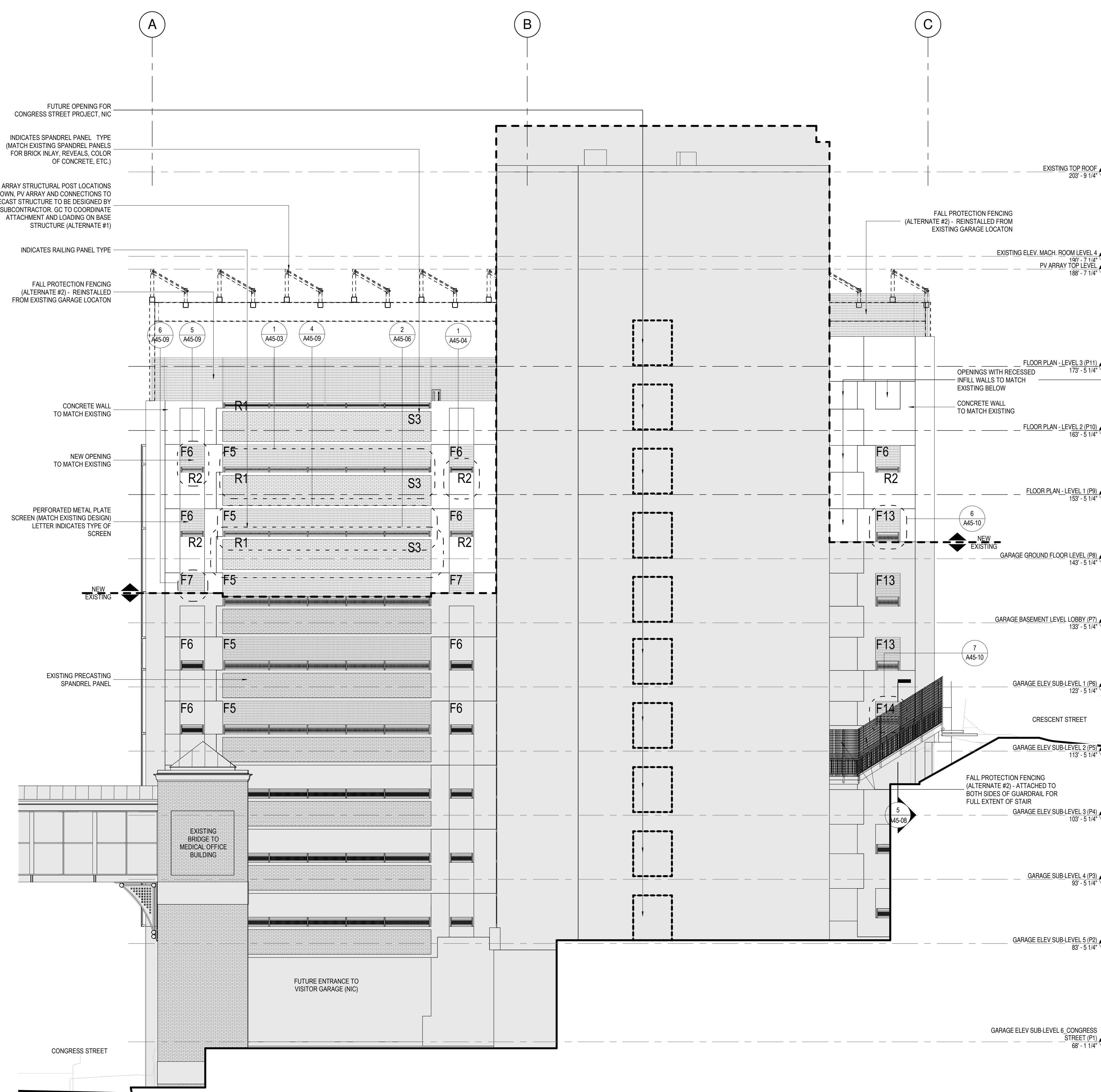
SHEET NUMBER

**A20-20**

Copyright 2017 @ Perkins + Will

ELEVATION LEGEND

- F - FALL PROTECTION FENCING
- P - PERFORATED METAL PANELS (SQUARE HOLES), NORTH AND WEST ELEVATIONS
- R - MESH AND CHANNEL METAL RAILINGS (MOUNTED ON PRECAST SPANDRELS)
- S - PRECAST CONCRETE SPANDREL PANELS



1 WEST - ELEVATION  
1/8" = 1'-0"