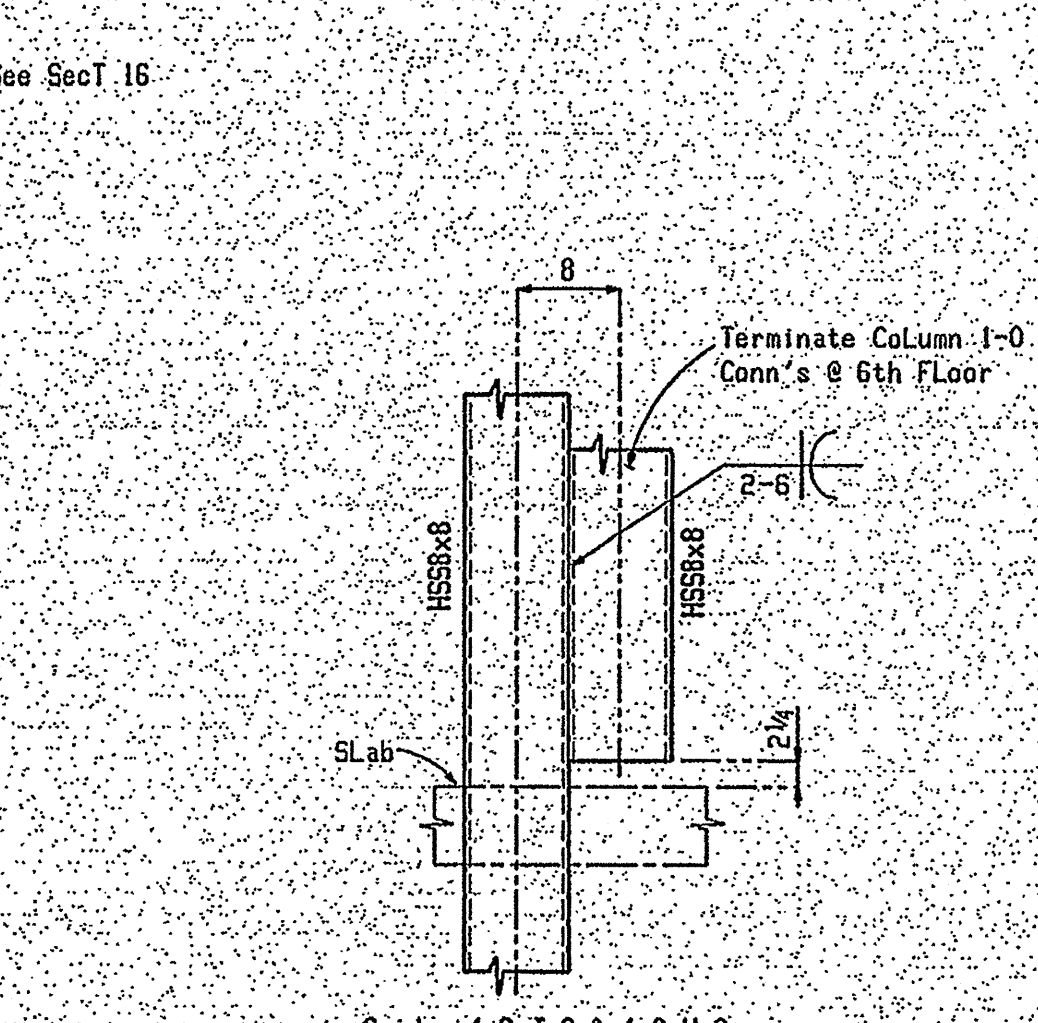
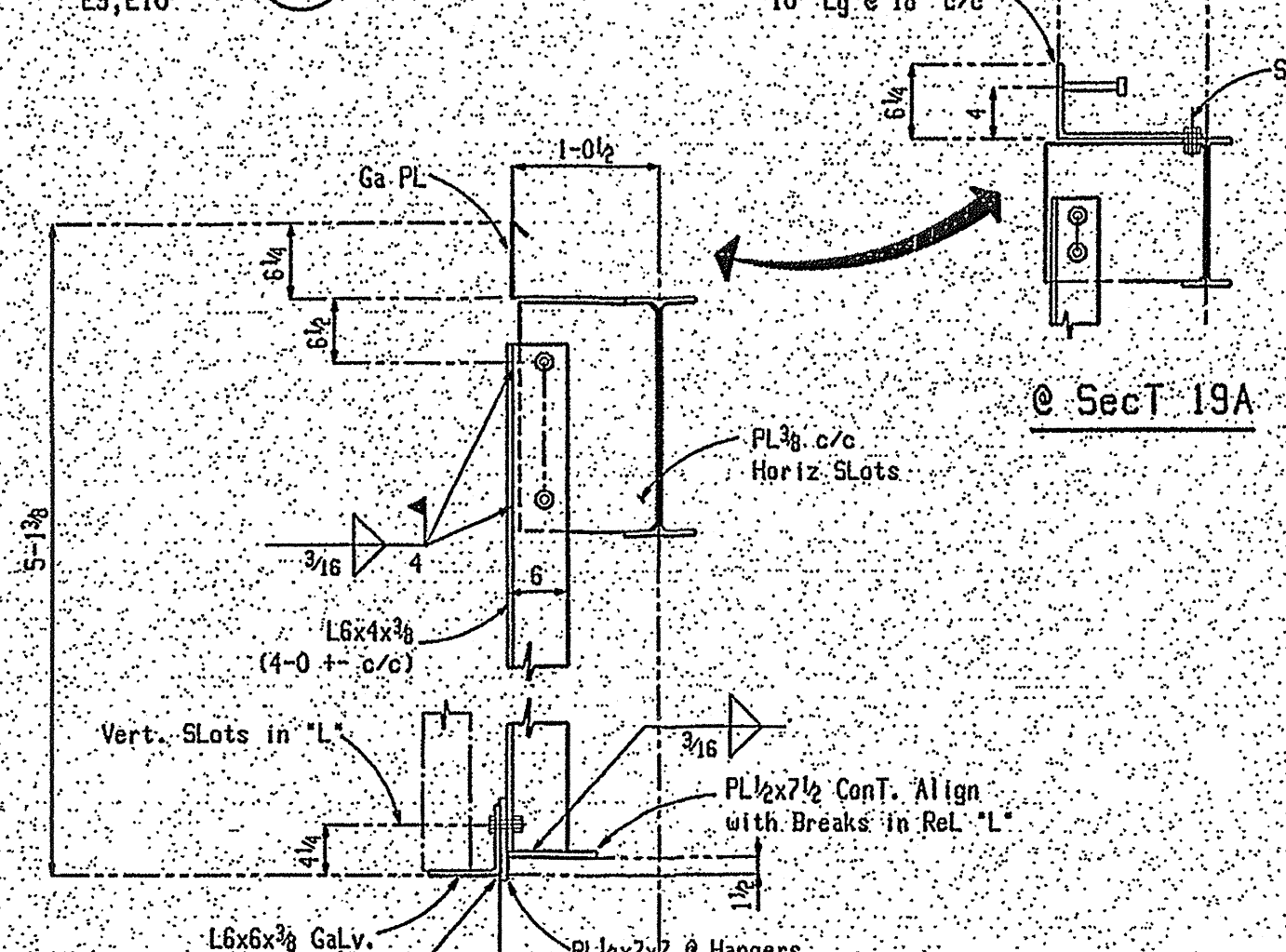
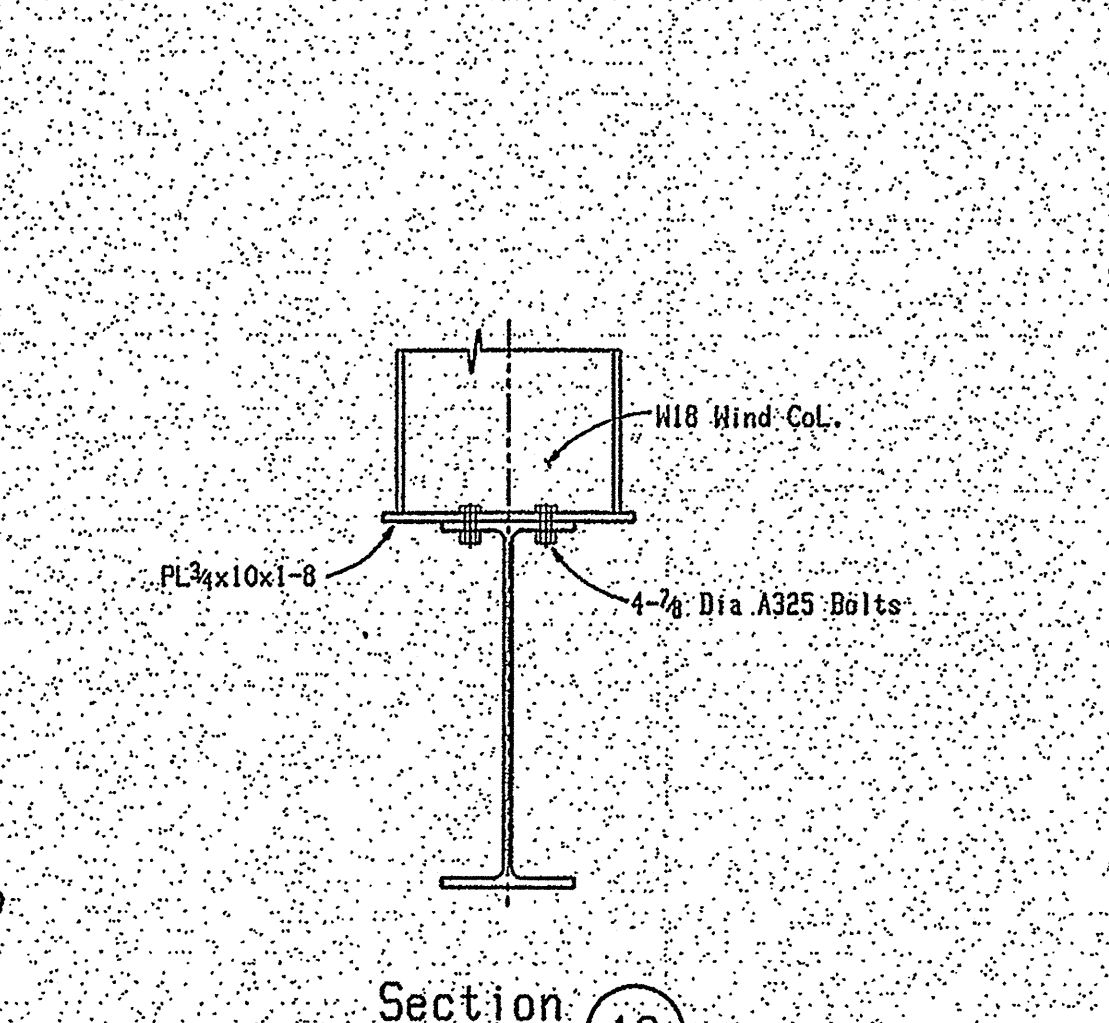
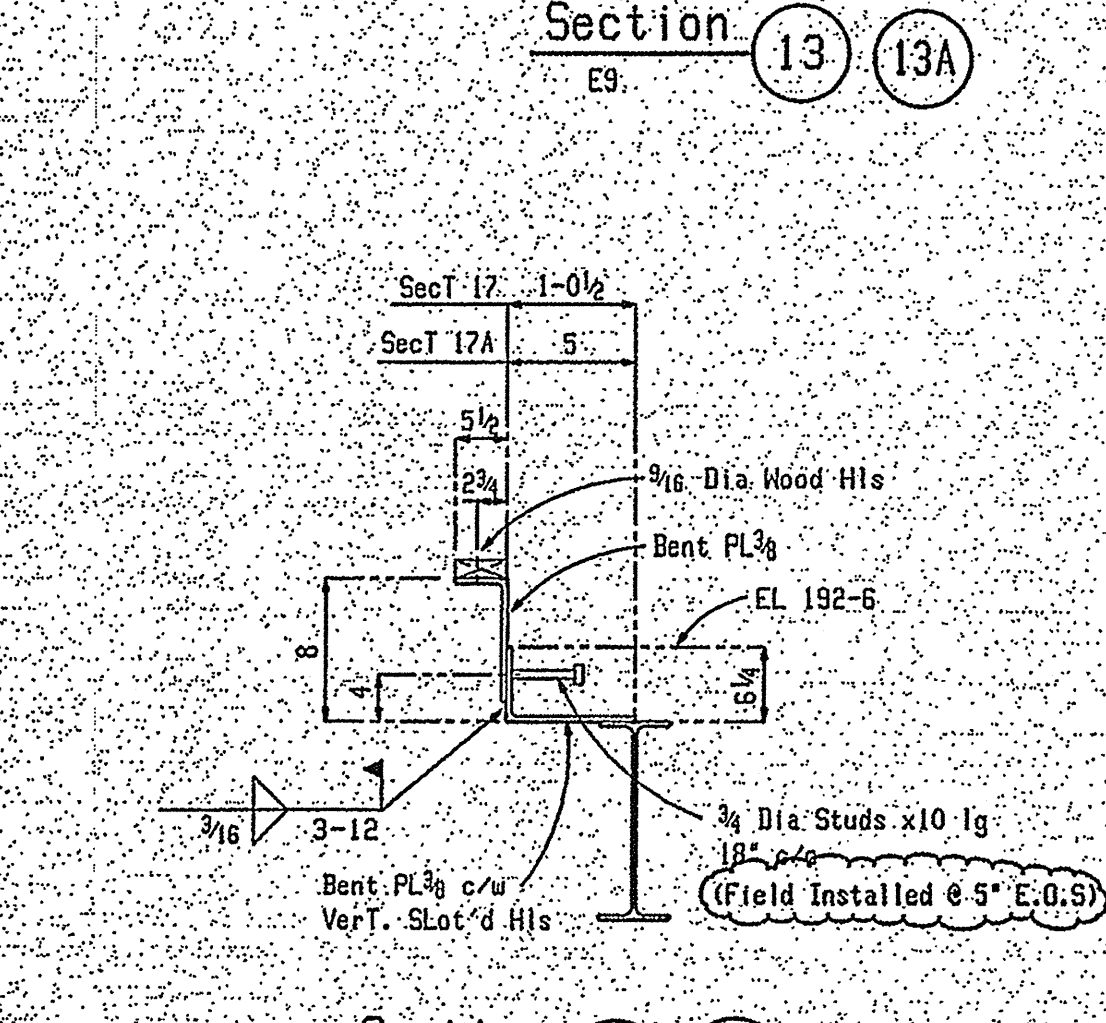
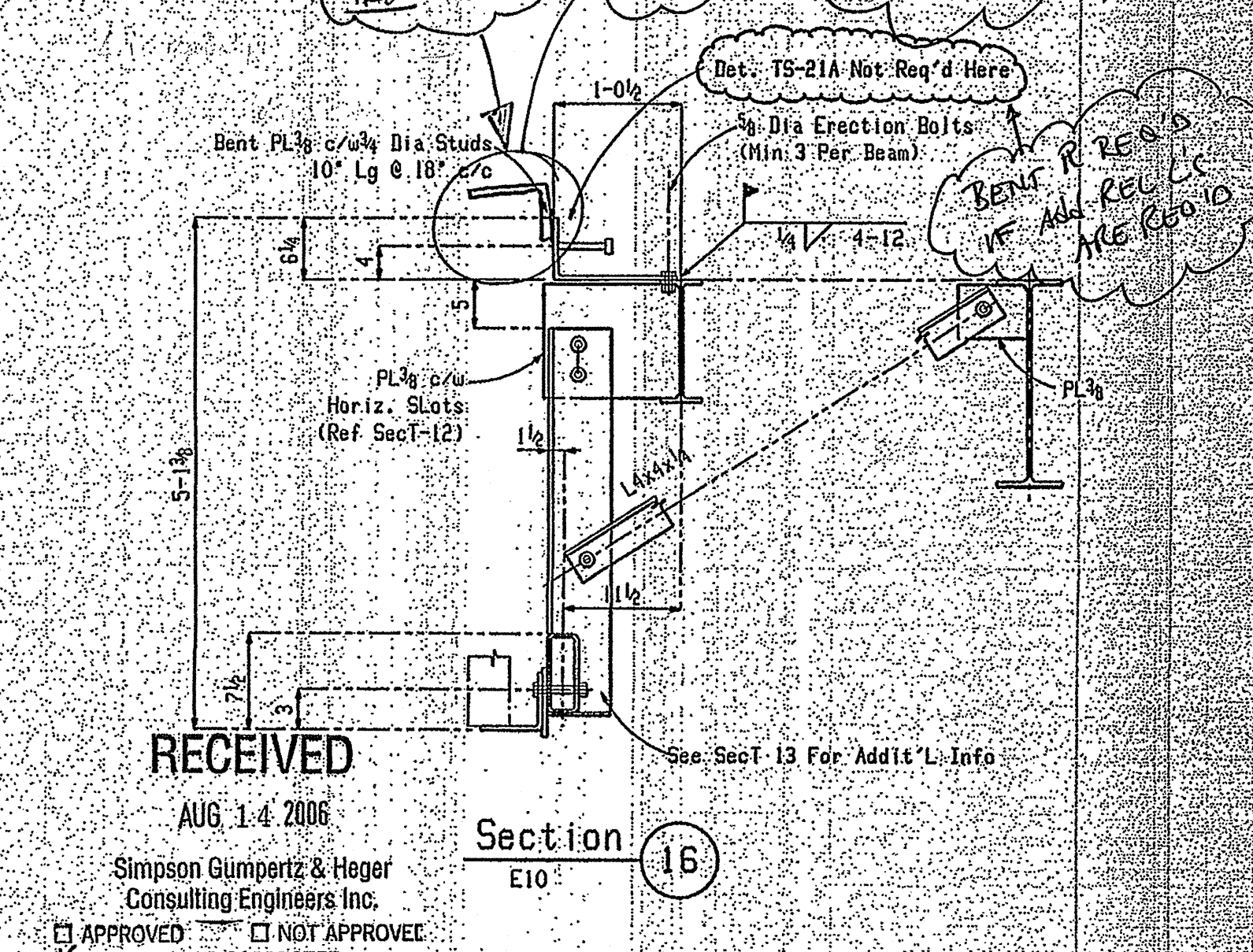
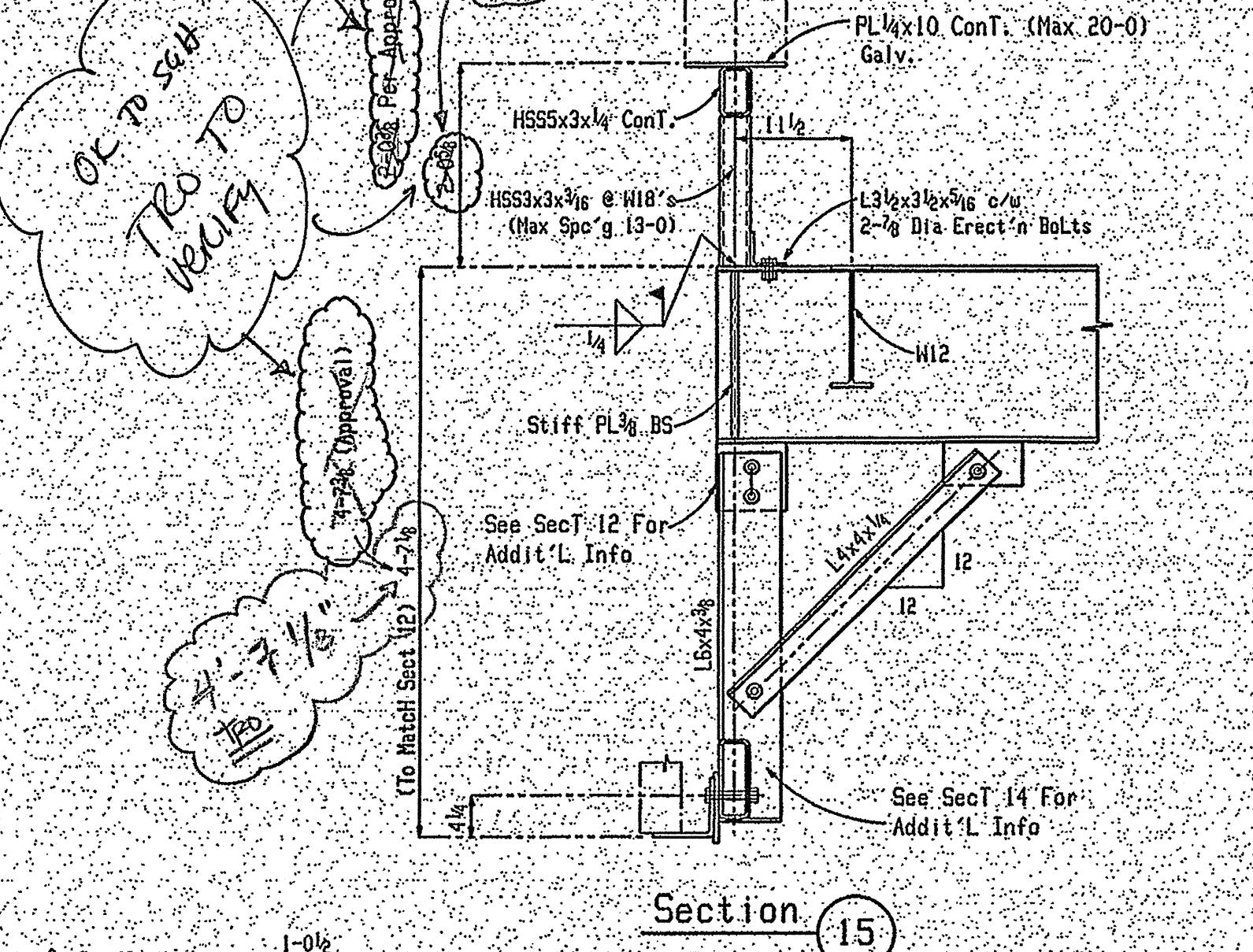
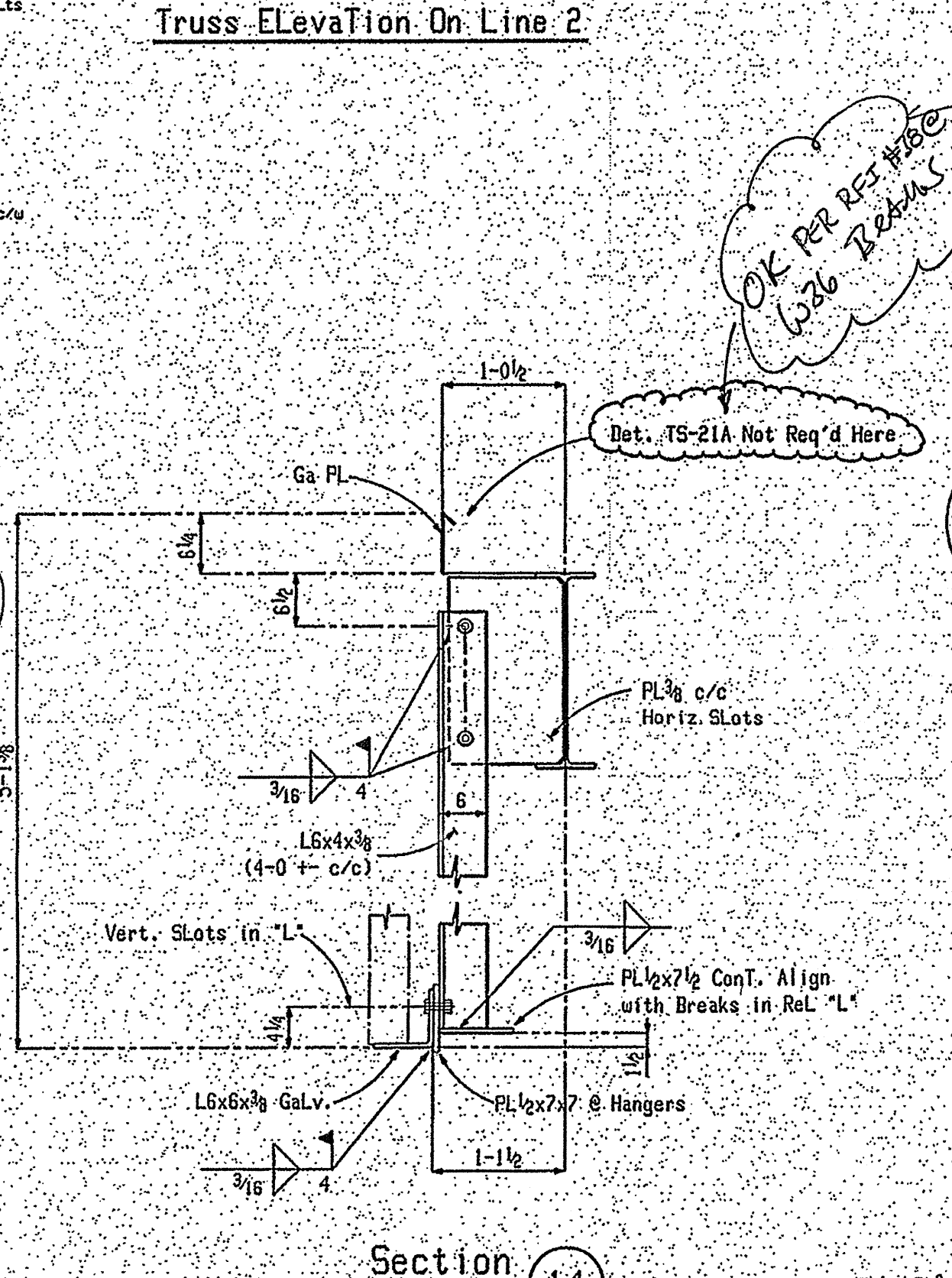
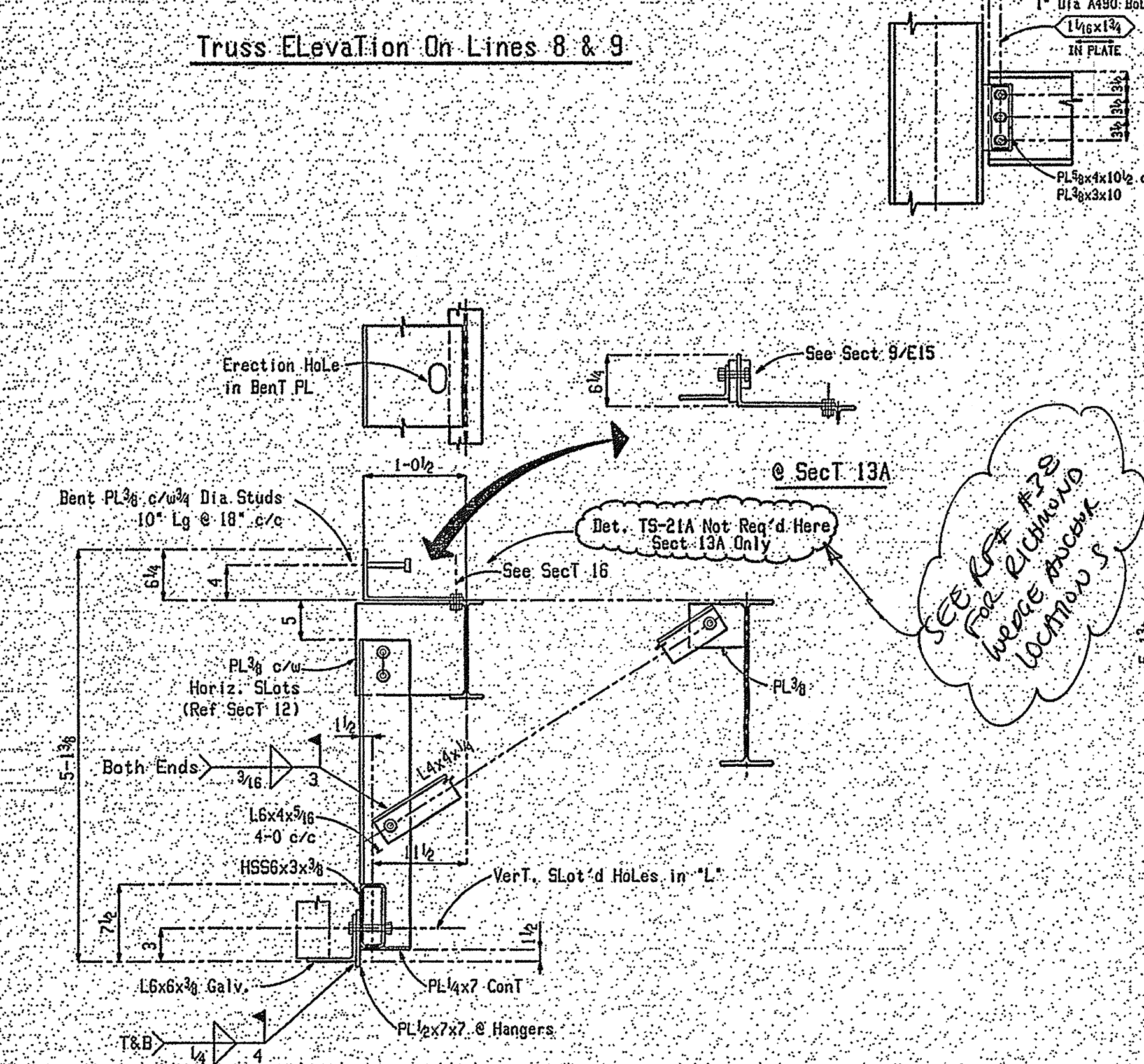
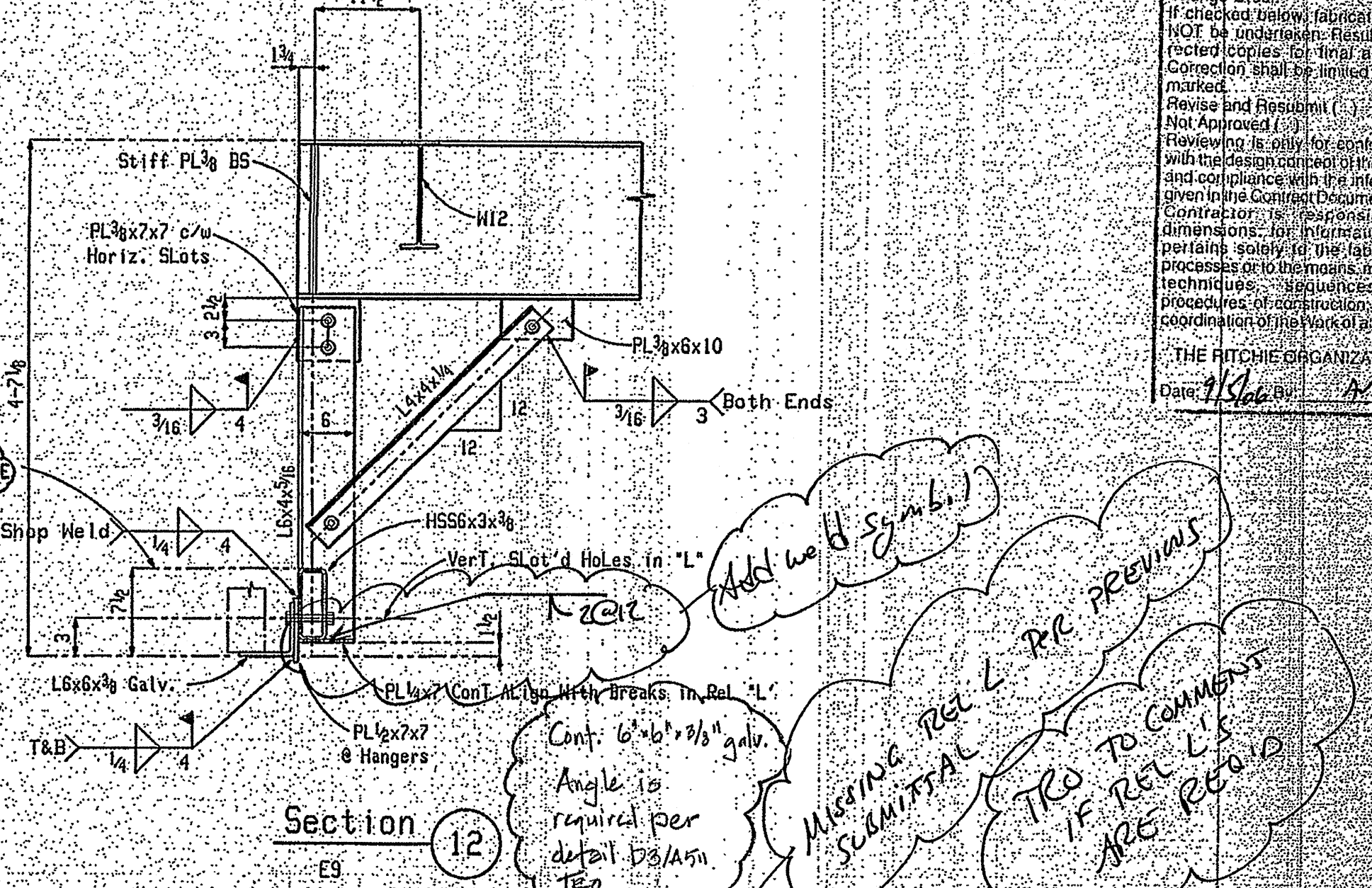
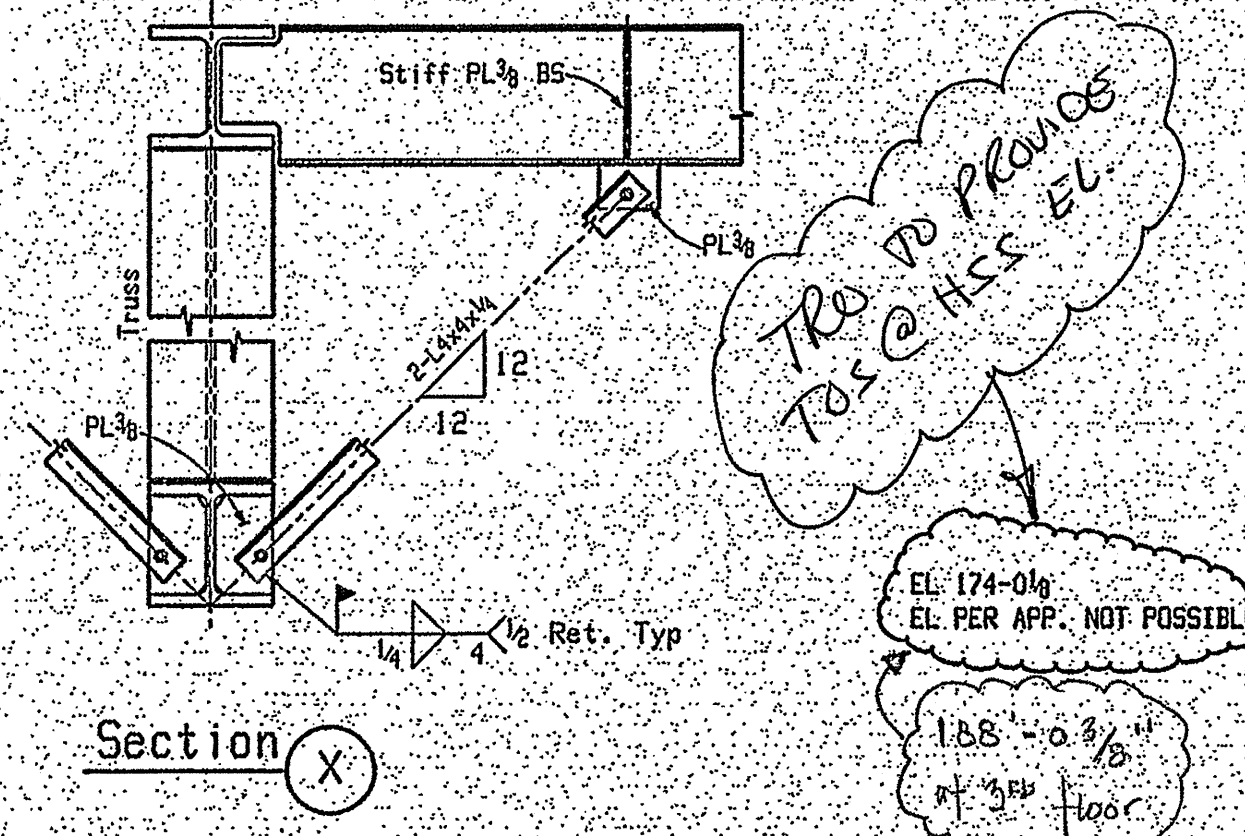
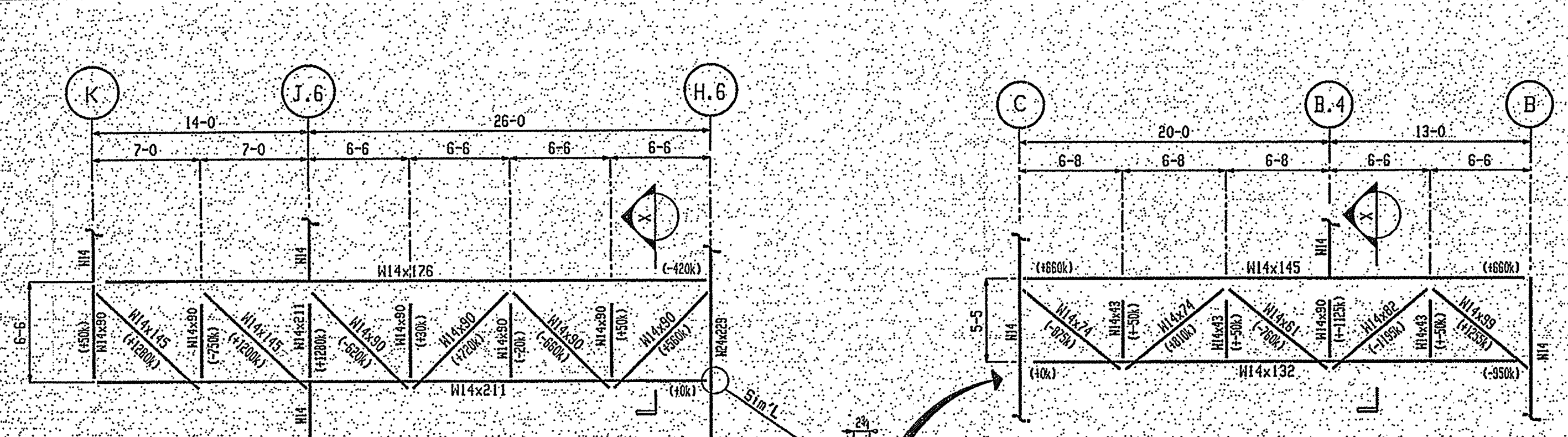


Approved ()
 Approved as Corrected (✓)
 Checked for compliance with the contract documents. Approval does not constitute a change in contract documents. Approval shall be indicated by a separate letter or Change Order.
 If checked below, fabrication may NOT be undertaken. Fabrication shall be held in abeyance until the contractor has received the necessary approval. The contractor shall be responsible for the coordination of all items to be furnished and installed.
 Review and Approval ()
 Reviewing is only for compliance with the contract documents and coordination with the information given in the contract documents. The contractor is responsible for the coordination of all items to be furnished and installed. The contractor shall be responsible for the coordination of all items to be furnished and installed.
 THE FITCHIE ORGANIZATION
 Date: 11/26/06



RECEIVED
 AUG 14 2006
 Simpson Gumpertz & Heger
 Consulting Engineers Inc.
 41 SEYON ST., BUILDING 1, SUITE 800
 WALTHAM, MA 02453

FOR APPROVAL
 JUL 31 2006
 TRO

WILLIAM A. BERRY & SON, INC.
 REVIEWED IN ACCORDANCE WITH
 THE CONTRACT DOCUMENTS.
 THE SUBCONTRACTOR/VENDOR IS
 RESPONSIBLE FOR ALL
 DIMENSIONS, CORRECT FIT AND
 COORDINATION OF ALL ITEMS
 TO BE FURNISHED & INSTALLED.

Revisions	
No.	Description
1	31-07-06 UPDATED TO SUIT APPROVAL

NOVEL IRON WORKS	
250 Ocean Road Greenland, NH 03840	
Project:	Maine Medical Center
Architect:	TRC
Engineer:	Simpson Gumpertz & Heger, Inc.
Customer:	William Berry & Son, Inc.

OK PER REV ABOVE
 W26 BEAMS

OK TO SUB
 TRO TO VERIFY

TRC TO PROVIDE
 T&B @ HSS EL

EL 174-0/6
 EL. PER APP. NOT POSSIBLE

ADD W/ B SYMBOL
 MACHINE REEL L REC PREVIOUS
 TRO TO COMMENT
 IF REV L'S
 ARE REQUIRED

DET. T9-21A NOT REQ'D HERE
 3/8 DIA ERECTION BOLTS
 (MIN. 3 PER BEAM)

FOR APPROVAL
 JUL 31 2006
 TRO