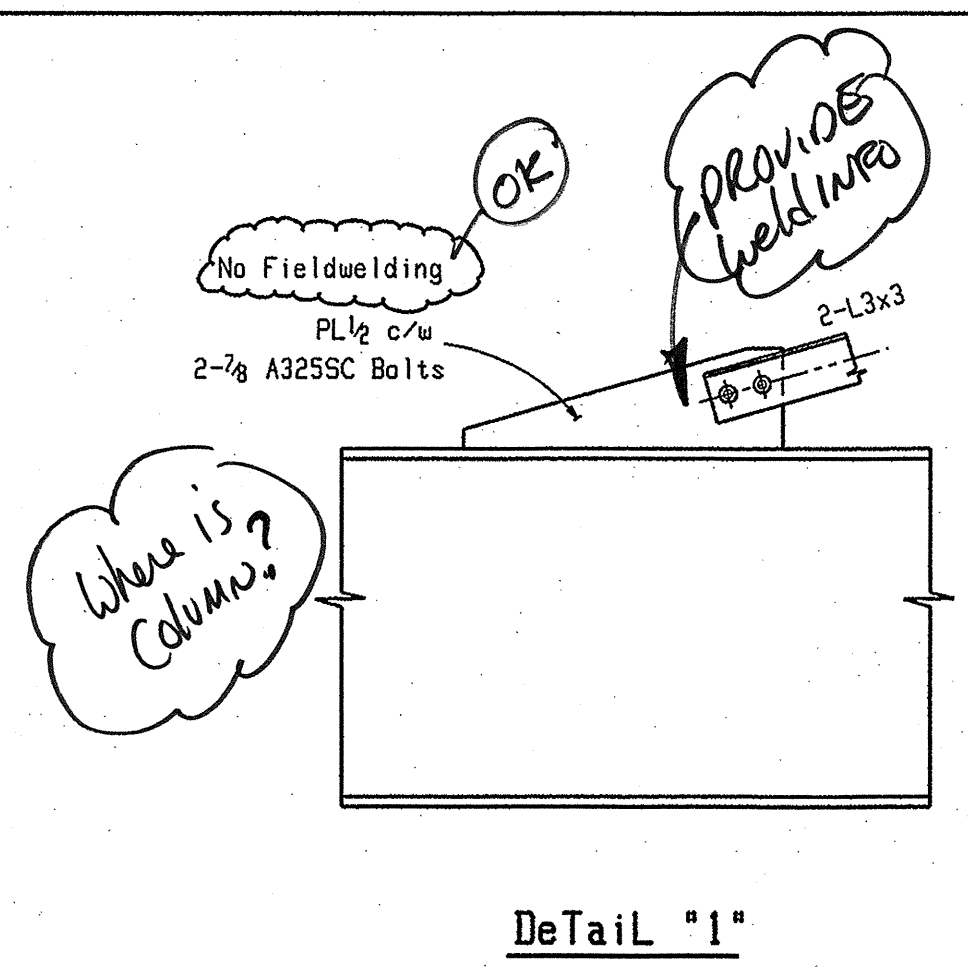
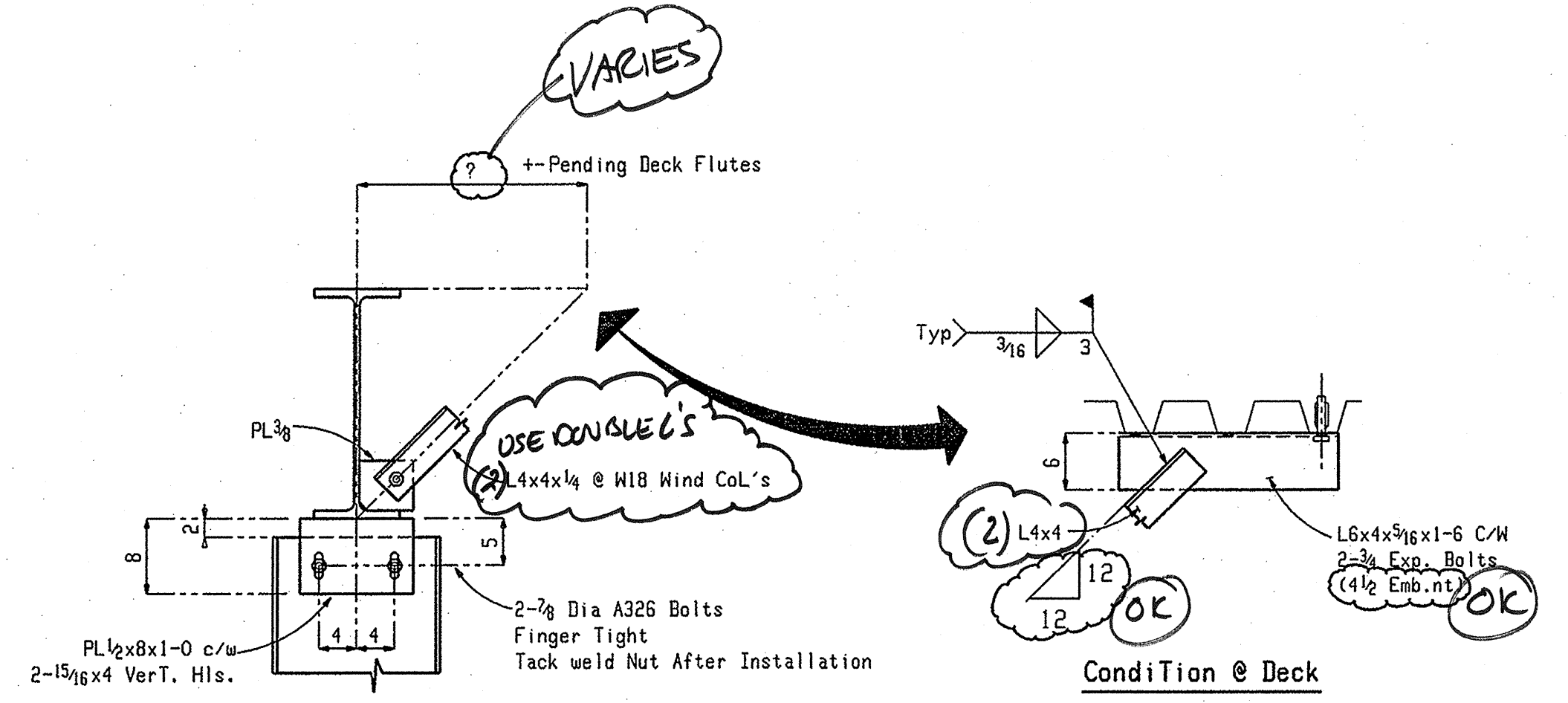


Brace Elevation Lines 5-6.5 Brace Elevation Lines D-C.3

Not Red'd @ C
PER ADD #5

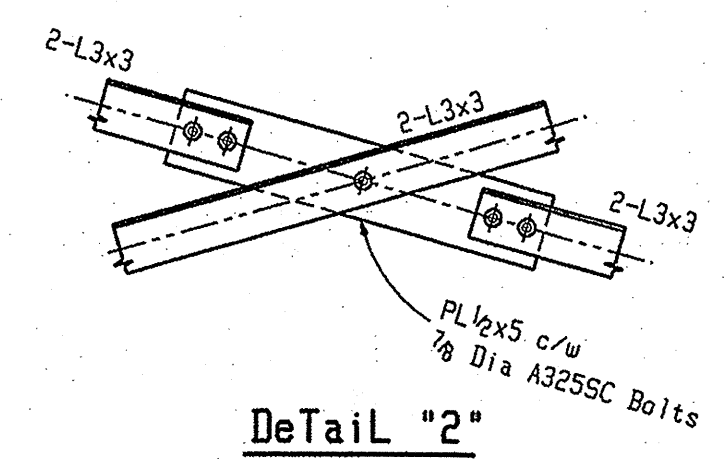


Detail "1"

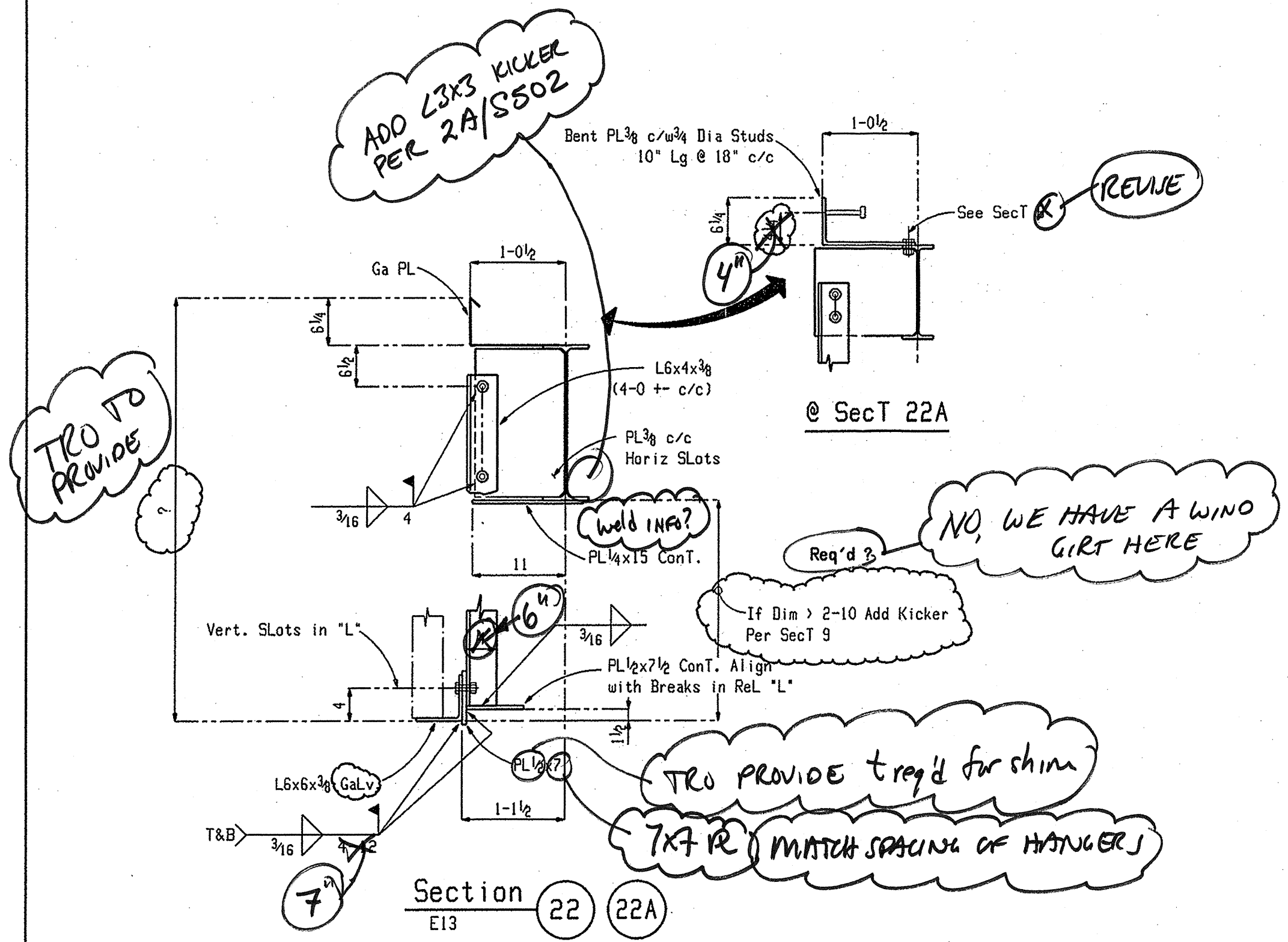


Section 21

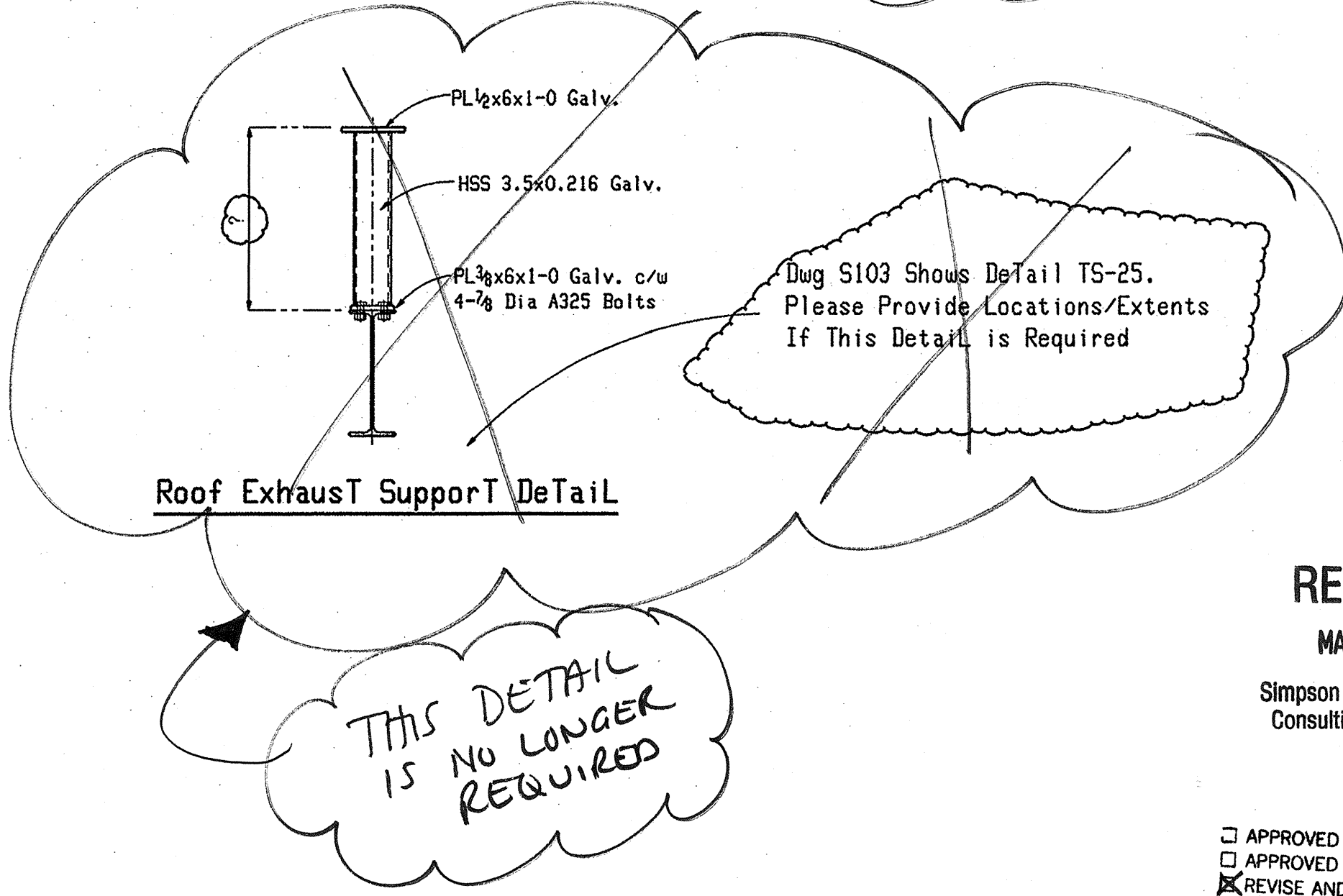
PER 1/SS02 2-L4x4 @ EACH W18
PER 2/SS02 L3x3 @ 4'OC BETWEEN WINDCOLS.



Detail "2"



Section 22



Roof Exhaust Support Detail

RECEIVED
MAY 10 2006

Simpson Gumpertz & Heger
Consulting Engineers Inc.

- APPROVED
- NOT APPROVE
- APPROVED AS CORRECTED
- REVISE AND RESUBMIT
- RESUBMIT FOR RECORD COPY

Checking is only for conformance with the design concept of the project and compliance with the information given in the Contract Documents. Contractor is responsible for dimensions to be furnished and installed. For information that pertains solely to the fabrication, pro coordination of the work of all trades.

DATE: 22 May 06
SIMPSON GUMPERTZ & HEGER INC
CONSULTING ENGINEERS
41 SEVON ST. BUILDING 1, SUITE 500
WALTHAM, MA 02453

WILLIAM A. BERRY & SON, INC.
REVIEWED IN ACCORDANCE WITH THE CONTRACT DOCUMENTS.

THE SUBCONTRACTOR / VENDOR IS RESPONSIBLE FOR ALL DIMENSIONS, CORRECT FIT AND COORDINATION OF ALL ITEMS TO BE FURNISHED & INSTALLED.

BY: JCAL DATE: 5-8-06
JOB # 04300-0001
SUBMISSION # 0517-22
SPEC/DRAWG. REF: REVIEWED FOR CONSTRUCTABILITY

FOR APPROVAL
MAY 02 2006

Revisions	
No.	Description

NOVEL IRON WORKS	
250 Ocean Road Greenland, NH 03840	
Project	Maine Medical Center
Description	Sections & Details
Architect	TRD
Engineer	Simpson Gumpertz & Heger Inc.
Customer	William Berry & Son Inc.
Date	APL-06
Drawn By	JD
Checked By	H.J.L.
Job No.	316
Sheet No.	E17