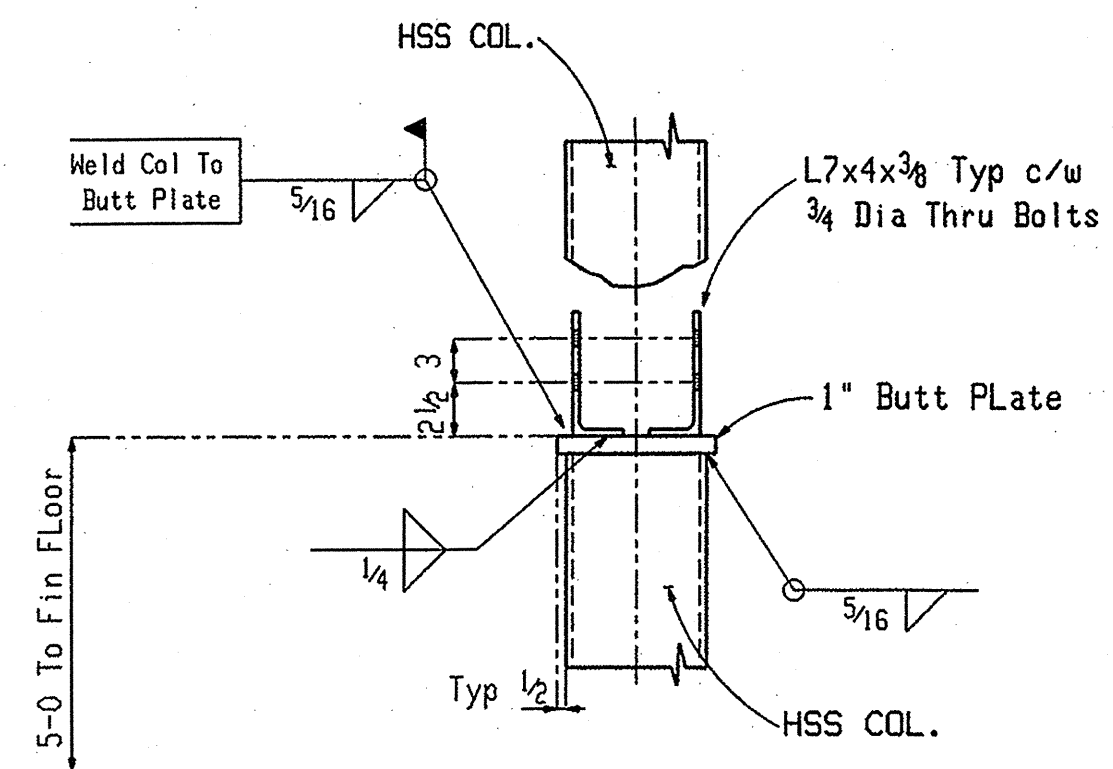
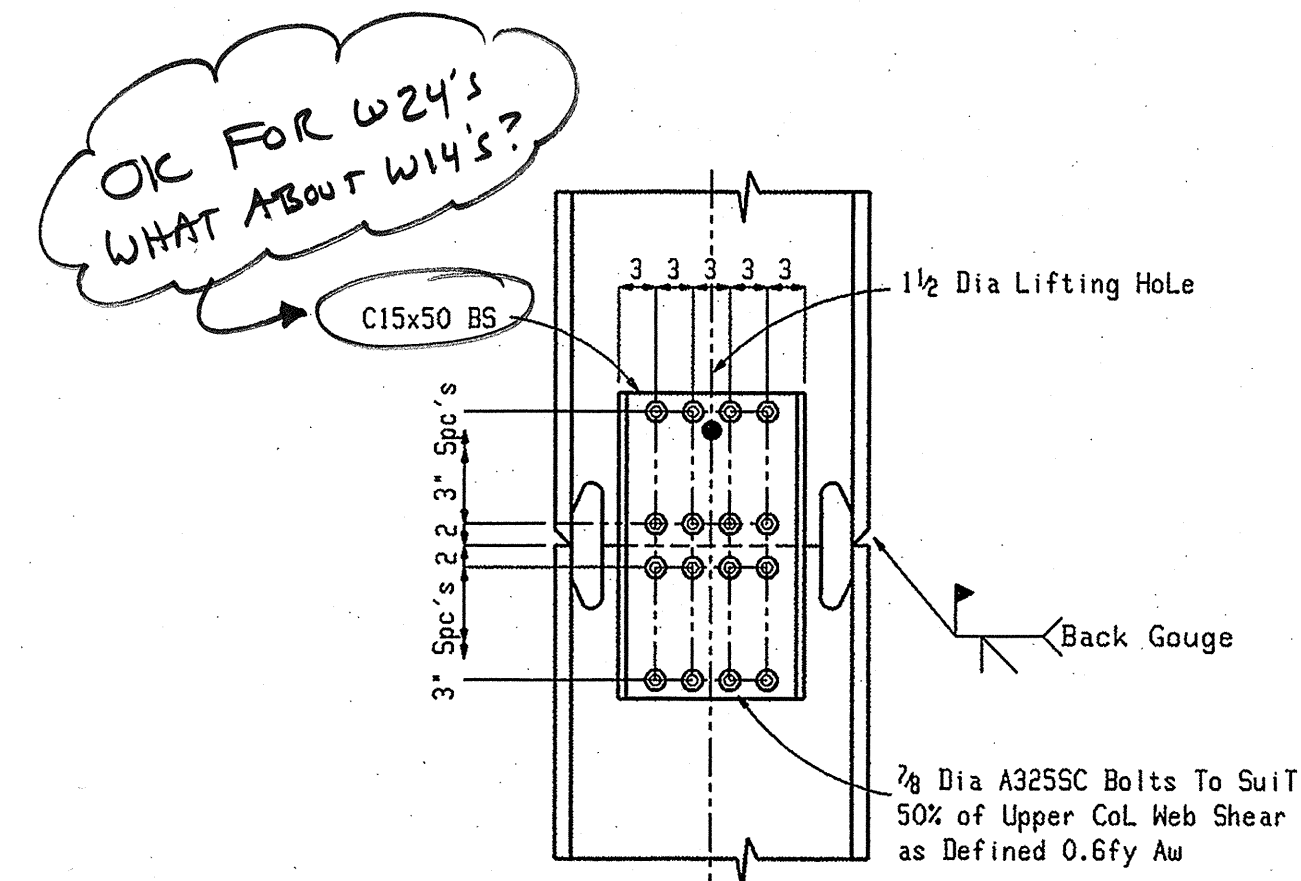


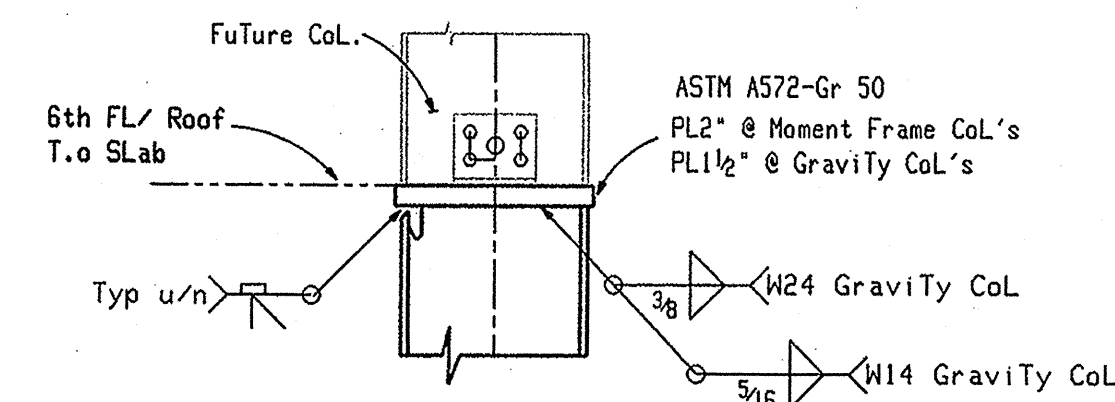
Gravity CoL. Splice Detail



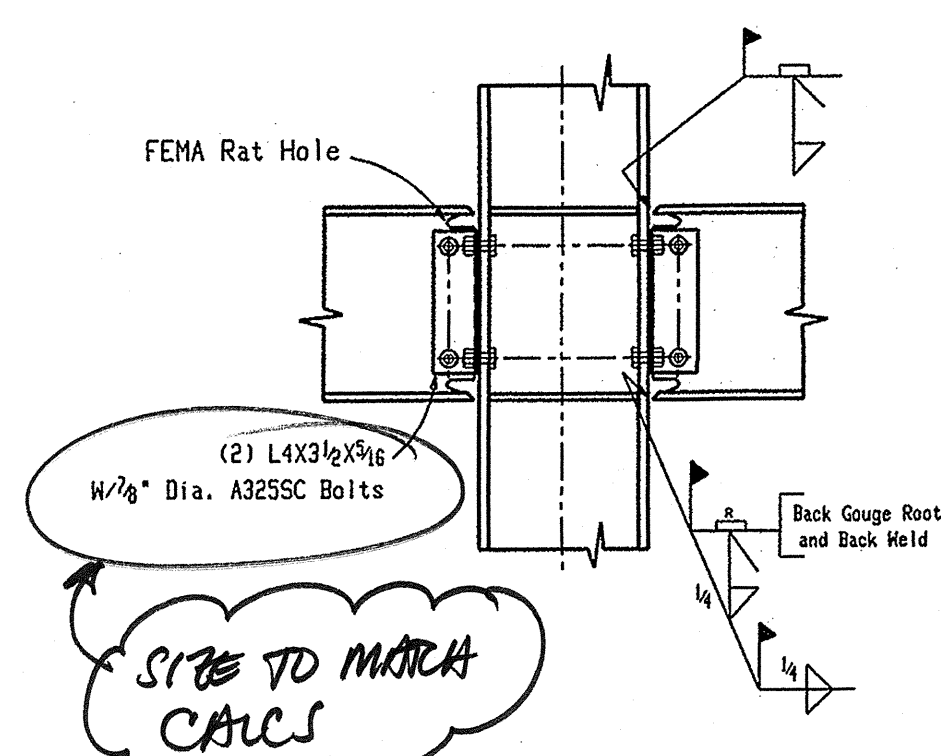
Typ. HSS CoL. Splice Detail



Moment CoL. Splice

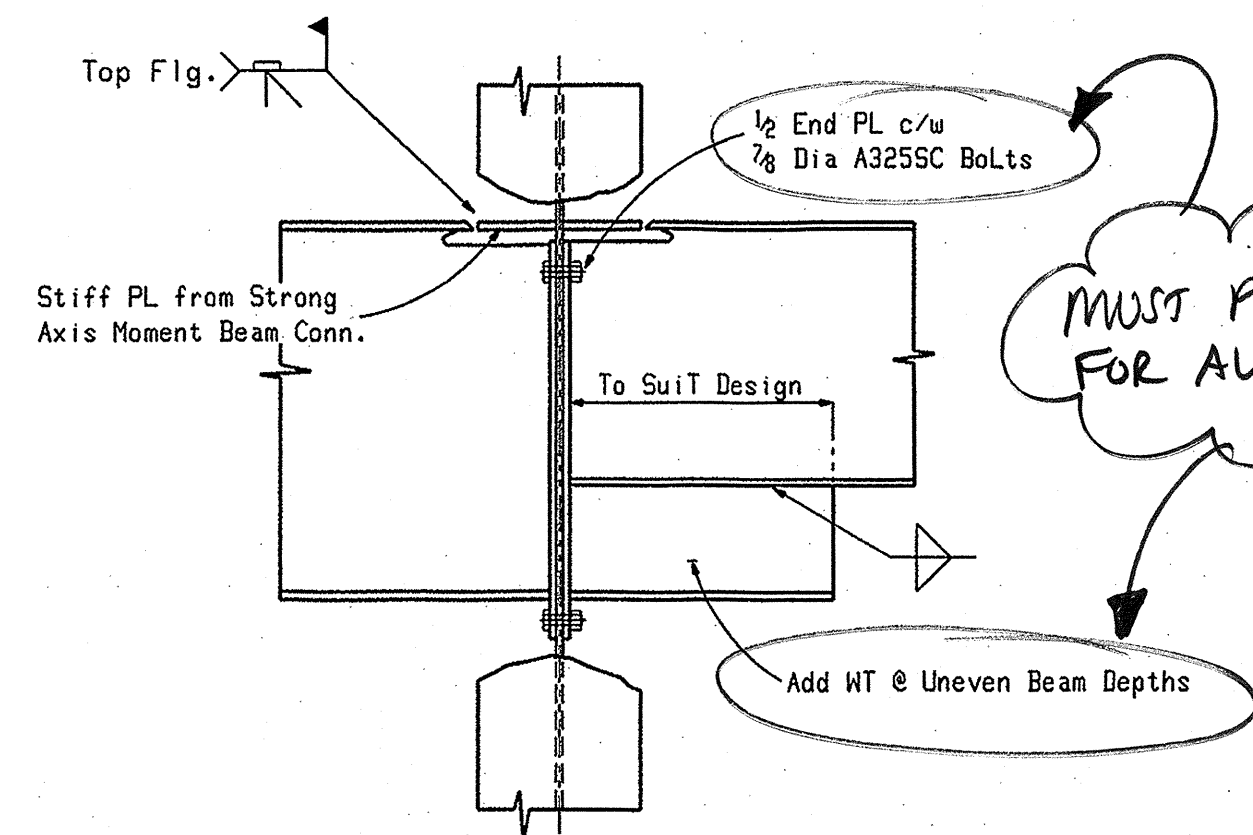


CoL. Detail @ Future Expansion

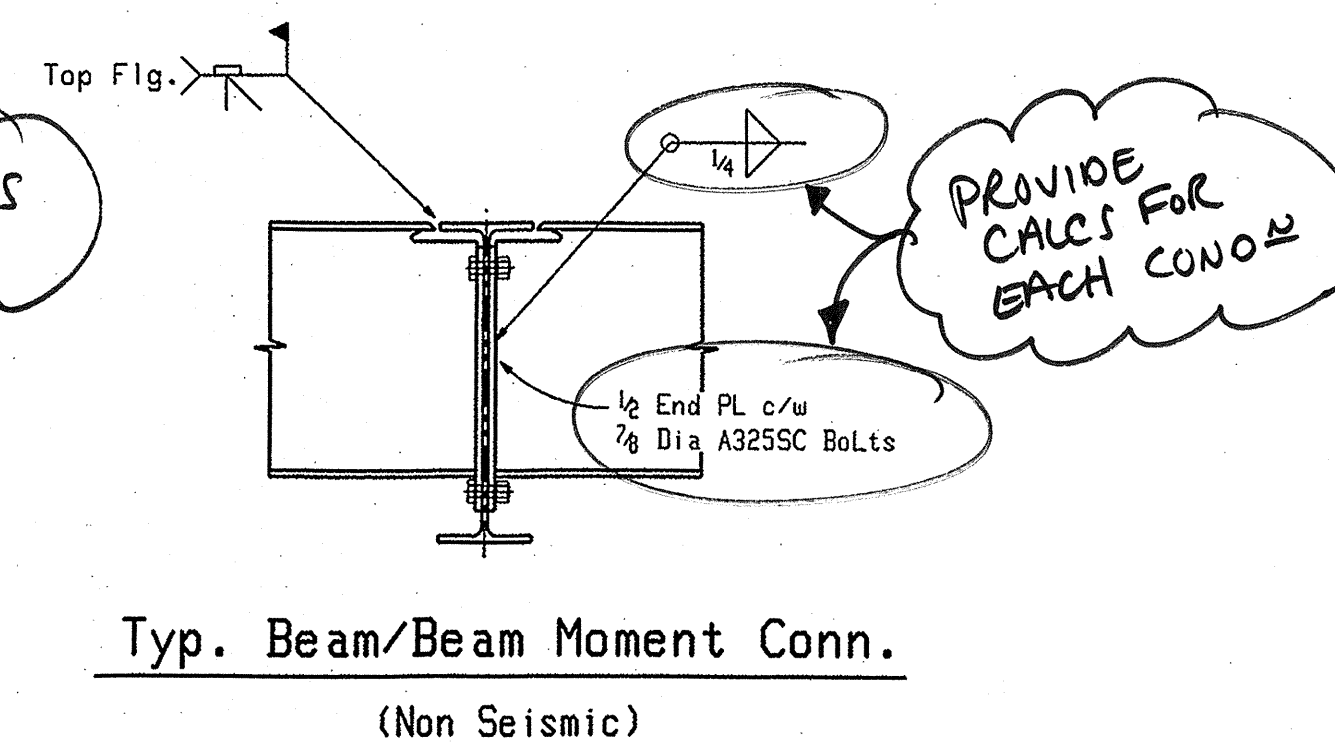


Typ. Moment Connection To Column Flange

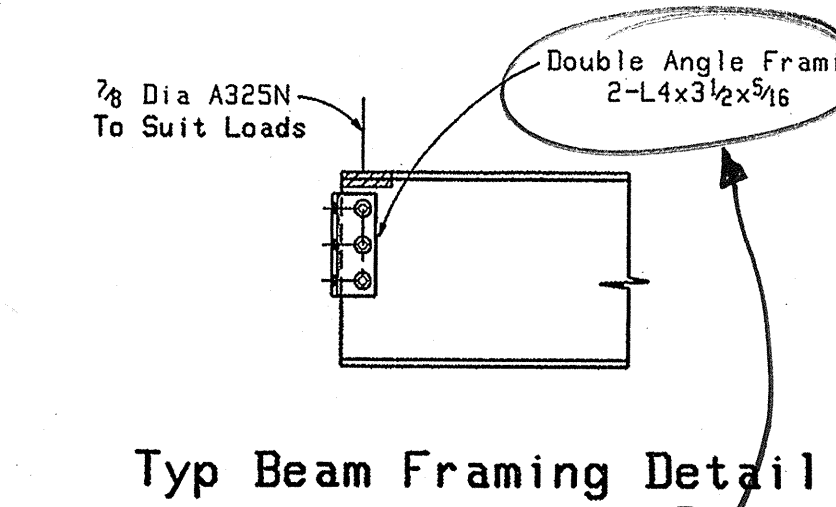
Filler Metal Shall Have a Min. Charpy V-Notch of 20 ft-lbs @ 40 deg.f



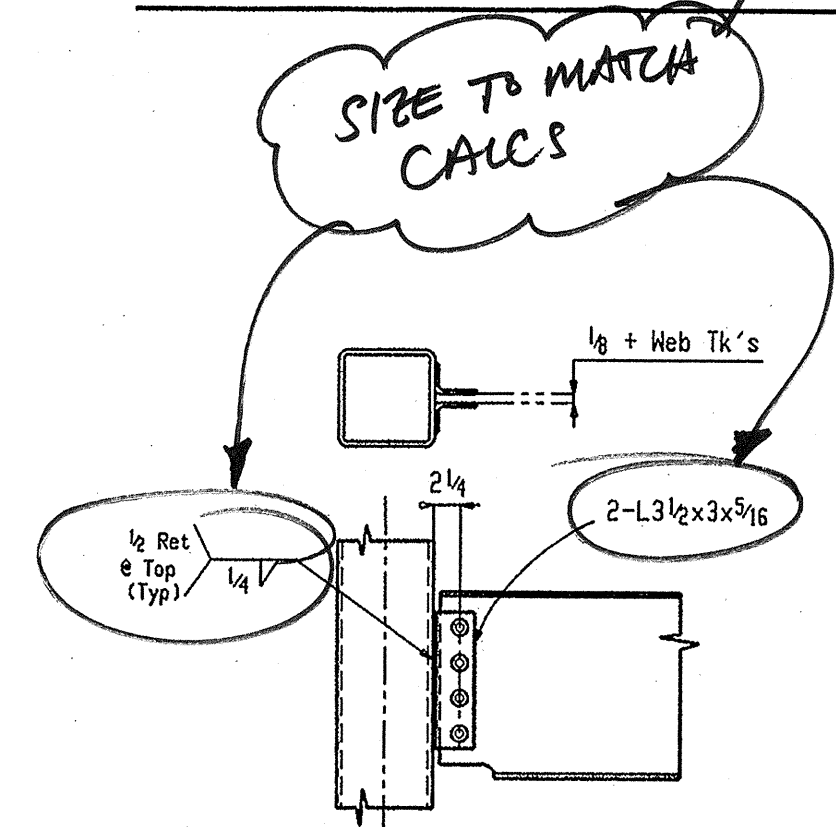
Typ. Moment Conn. To Column Web (Non Seismic)



Typ. Beam/Beam Moment Conn. (Non Seismic)



Typ Beam Framing Detail



Typ Beam/HSS CoL. Detail

RECEIVED
MAY 10 2006

Simpson Gumpertz & Heger
Consulting Engineers Inc.

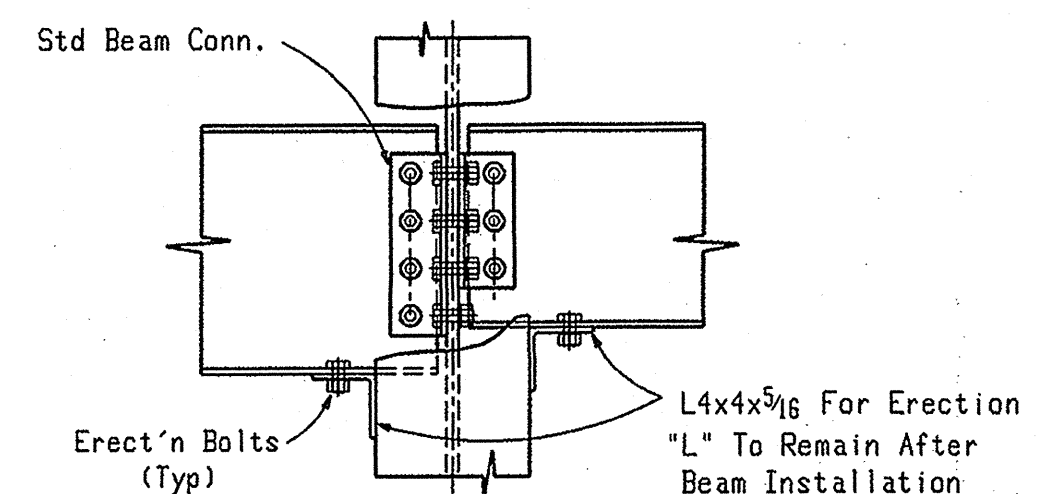
- APPROVED
- NOT APPROVED
- APPROVED AS CORRECTED
- REVISE AND RESUBMIT
- RESUBMIT FOR RECORD COPY

Checking is only for conformance with the design concept of the project and compliance with the information given in the Contract Documents. Contractor is responsible for dimensions to be confirmed and correlated at the job site; for information that pertains solely to the fabrication processes or to techniques of construction; and for coordination of the work of all trades.

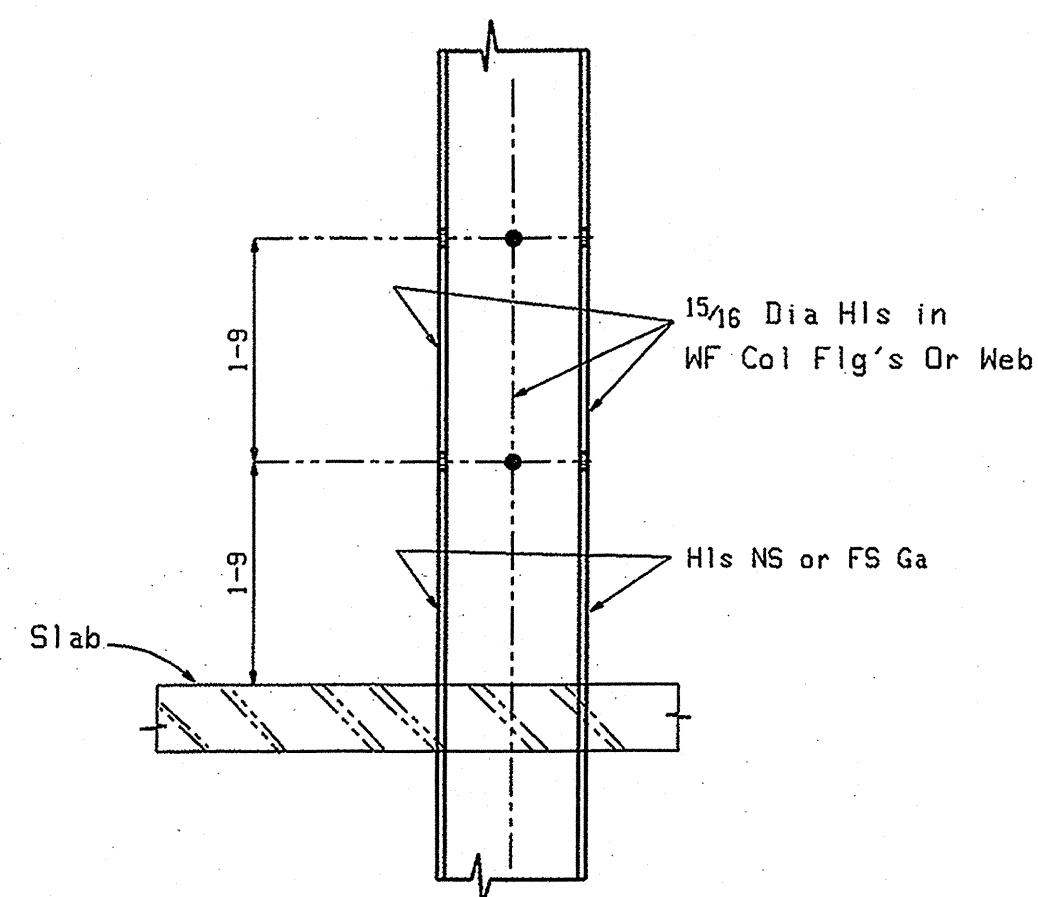
BY: M. Boller
DATE: 22 MAY 06
SIMPSON GUMPERTZ & HEGER INC.
CONSULTING ENGINEERS
41 SEYON ST., BUILDING 1, SUITE 500
WYTHAM, MA 02453

WILLIAM A. BERRY & SON, INC.
REVIEWED IN ACCORDANCE WITH THE CONTRACT DOCUMENTS.
THE SUBCONTRACTOR/VENDOR IS RESPONSIBLE FOR ALL DIMENSIONS, CORRECT FIT AND COORDINATION OF ALL ITEMS TO BE FURNISHED & INSTALLED.
DATE: 5/8/06
JOB #:
JOB NAME: OS100 Charles
SUBMISSION #:
SUBMISSION #:
SPEC. DRAWING REF.
REVIEWED FOR CONSTRUCTIBILITY

WHERE ARE:
• BEAM TO HSS COL MOMENT CONN.?
• HSS BEAM DETAIL?



Safety Connection (Beam/Column Web)



Safety Cable Conn. (Perimeter CoLs) (Major Internal Opng's)

Revisions	
No.	Date Description

		NOVEL IRON WORKS	
		250 Ocean Road Greenland, NH 03840	
Project	Maine Medical Center	Holes	13g (uno)
Description	Sections & Details	Weld	ER70S
Architect	TRD	ATSC Certified	Category III
Engineer	Simpson Gumpertz & Heger Inc.	Date:	Apr-06
Customer	WILLIAM BERRY & SON INC.	Drawn By	JD
		Chk By	M.J.L.
		Job No.	316
		Sht. No.	E14