

CONSTRUCTION DOCUMENTS
JANUARY 28, 2018

NO.	ISSUE	DATE
Job Number	B150312-000	
Drawn	NV	
Checked	BN	
Approved	BN	

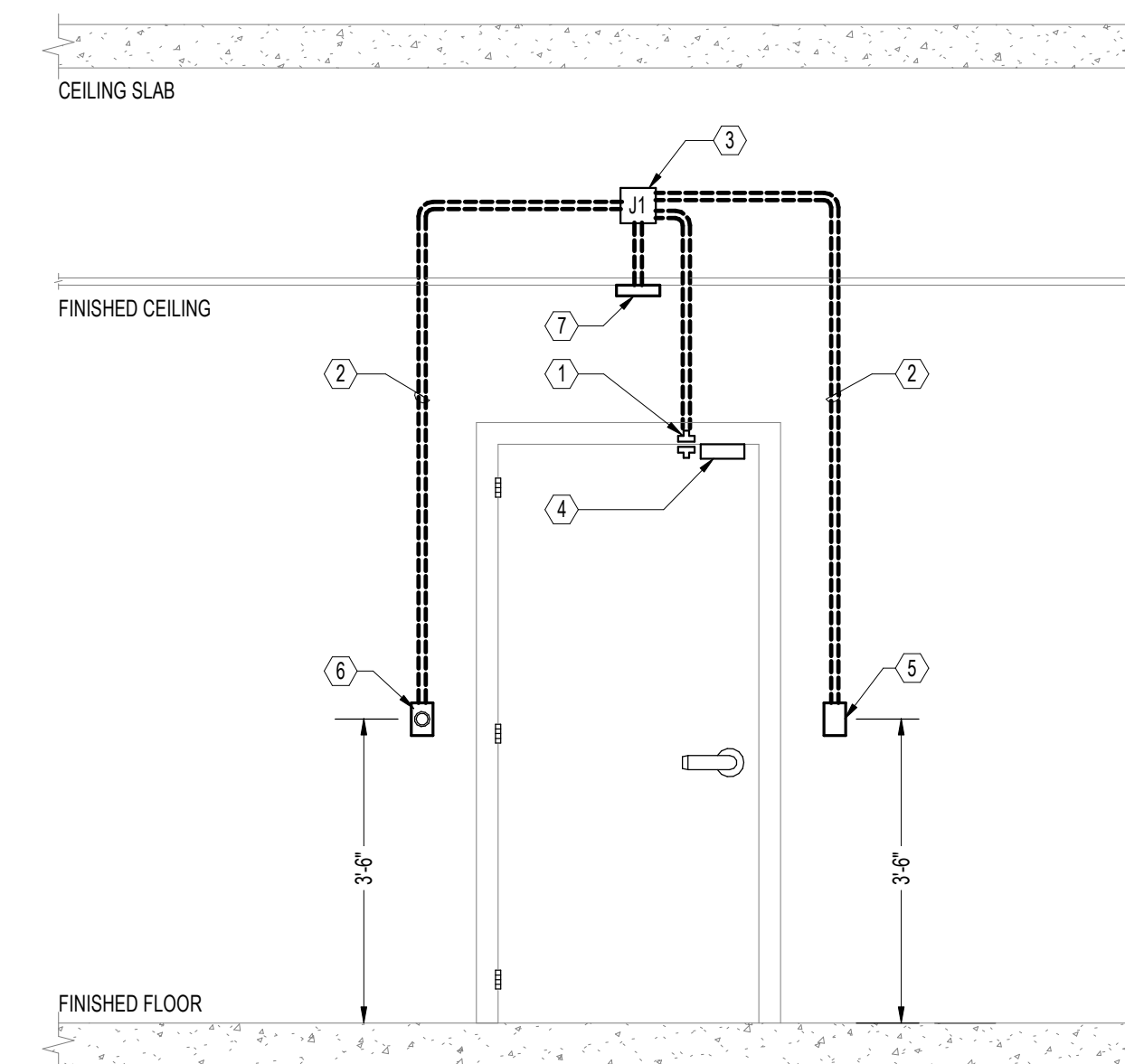
TITLE

SECURITY DETAILS

SHEET NUMBER

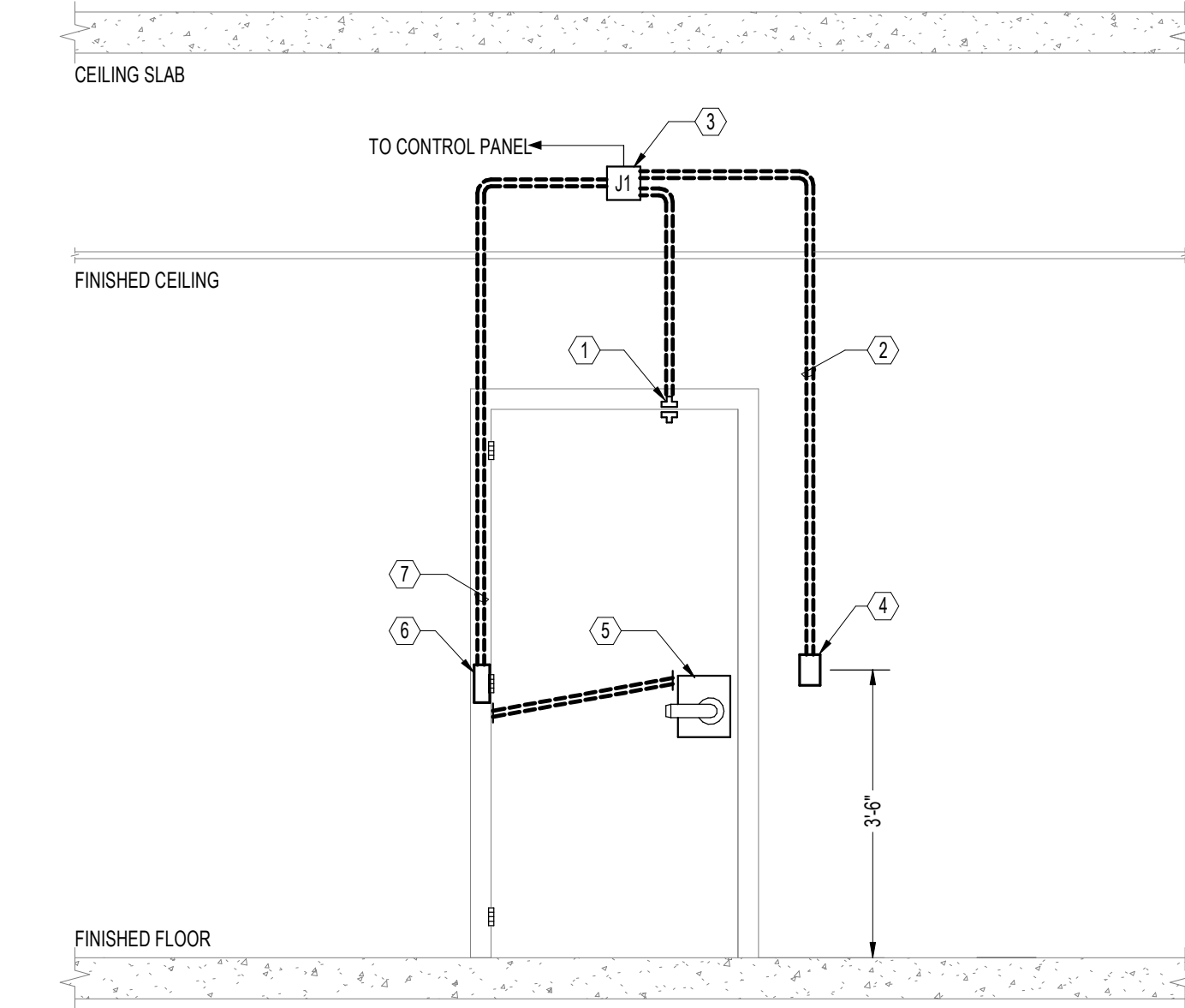
SC00-22

Copyright 2017 © Perkins+Will



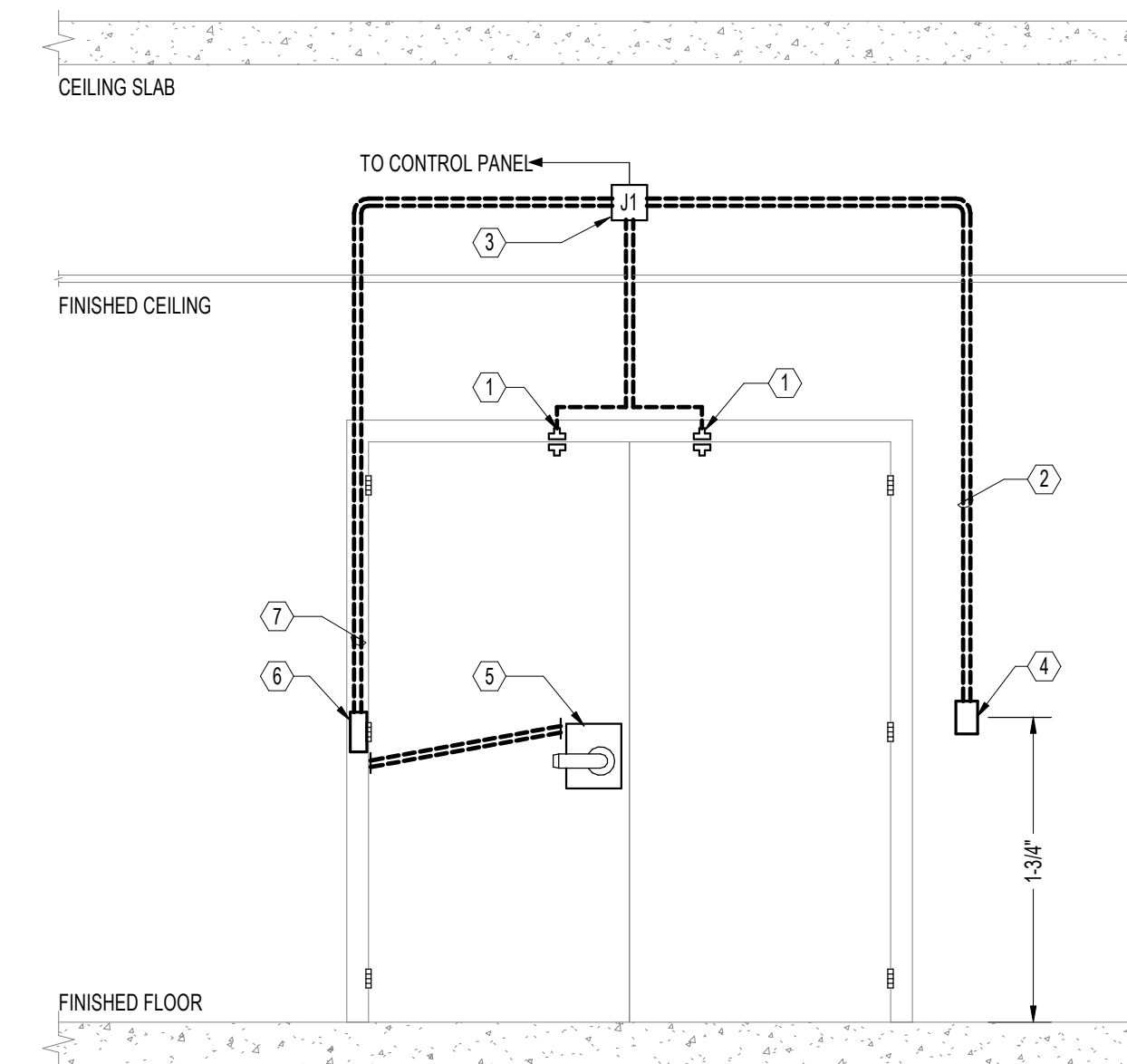
- NOTES:
- DOOR POSITION SWITCH (1) (RECESSED)
 - STUB 3/4" CONDUIT WITH DRAG LINE (2)
 - PROVIDE 4" x 4" x 2-1/8" DEEP JUNCTION BOX WITH COVER MOUNTED ABOVE DOOR, ABOVE ACCESSIBLE CEILING (3)
 - LOCKING DEVICE: MAGNETIC LOCK (4)
 - CARD READER (5) (UNPROTECTED SIDE)
 - REQUEST TO EXIT PUSH BUTTON (6) (PROTECTED SIDE)
 - REQUEST TO EXIT MOTION DETECTOR (7) (PROTECTED SIDE)

6 MAGNETIC LOCK, PUSH BUTTON, MOTION DETECTOR
REQUEST EXIT CARD READER-INTERCOM (SINGLE
DOOR)
SCALE: NONE



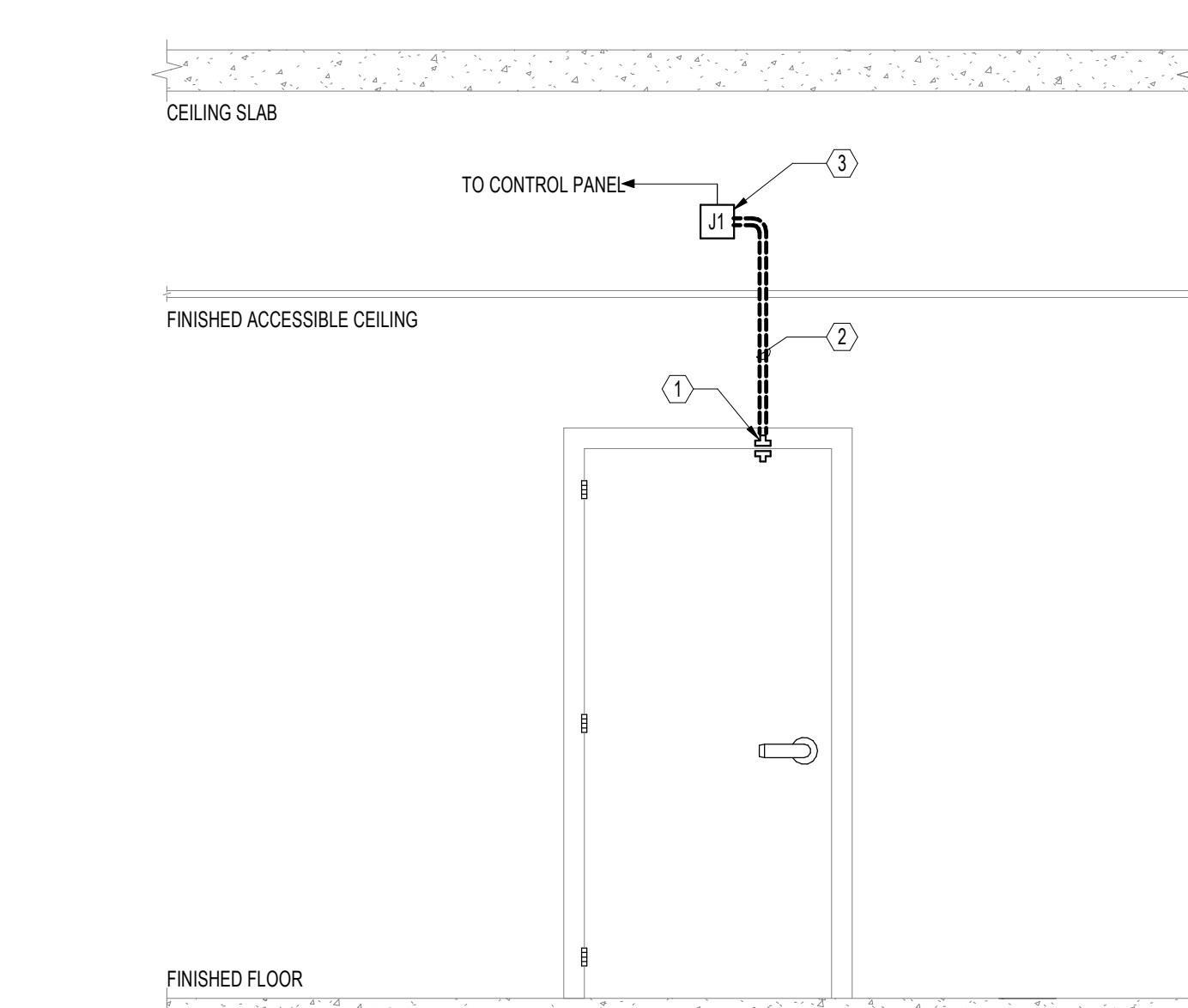
- NOTES:
- DOOR POSITION SWITCH (1) (RECESSED)
 - STUB 3/4" CONDUIT WITH DRAG LINE (2)
 - PROVIDE 4" x 4" x 2-1/8" DEEP JUNCTION BOX WITH COVER MOUNTED ABOVE DOOR, ABOVE ACCESSIBLE CEILING (3)
 - CARD READER (4) (UNPROTECTED SIDE)
 - LOCKING DEVICE: ELECTRIFIED MORTISE (5)
 - POWER TRANSFER HINGE (6) AND MORTAR JUNCTION BOX (7)
 - STUB 3/4" CONDUIT OR GREENFIELD DOWN DOOR FRAME ON THE HINGE SIDE OF THE DOOR BACK BOX, TO JUNCTION BOX LOCATED ABOVE ACCESSIBLE CEILING (8)

3 MORTISE LOCKING DEVICE CARD READER (SINGLE
DOOR)
SCALE: NONE



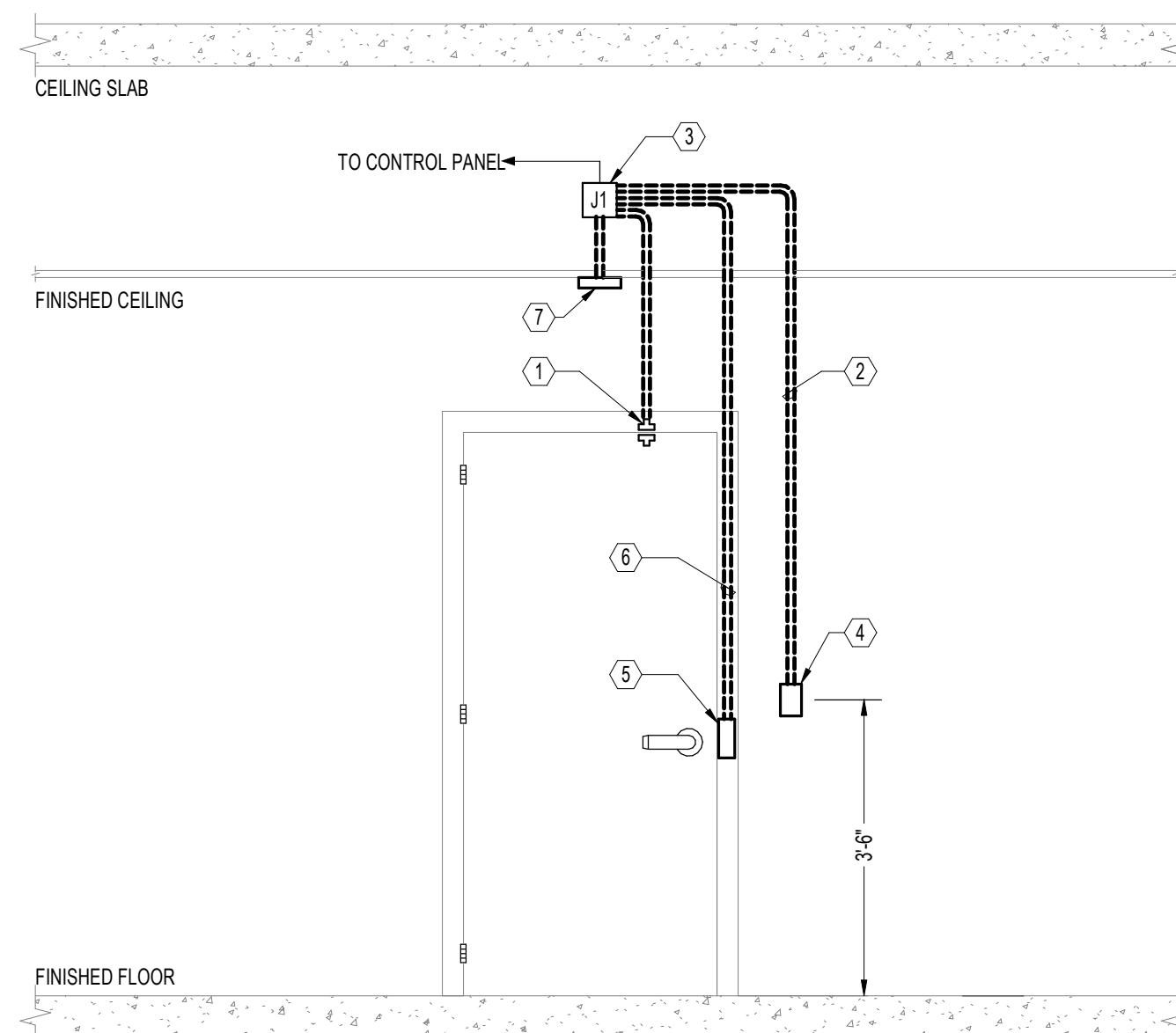
- NOTES:
- DOOR POSITION SWITCH (1) (RECESSED)
 - STUB 3/4" CONDUIT WITH DRAG LINE (2)
 - PROVIDE 4" x 4" x 2-1/8" DEEP JUNCTION BOX WITH COVER MOUNTED ABOVE DOOR, ABOVE ACCESSIBLE CEILING (3)
 - CARD READER (4) (UNPROTECTED SIDE)
 - LOCKING DEVICE: ELECTRIFIED MORTISE (5)
 - POWER TRANSFER HINGE (6) AND MORTAR JUNCTION BOX (7)
 - STUB 3/4" CONDUIT OR GREENFIELD DOWN DOOR FRAME ON THE HINGE SIDE OF THE DOOR BACK BOX, TO JUNCTION BOX LOCATED ABOVE ACCESSIBLE CEILING (8)

5 MORTISE LOCKING DEVICE CARD READER (DOUBLE
DOOR)
SCALE: NONE



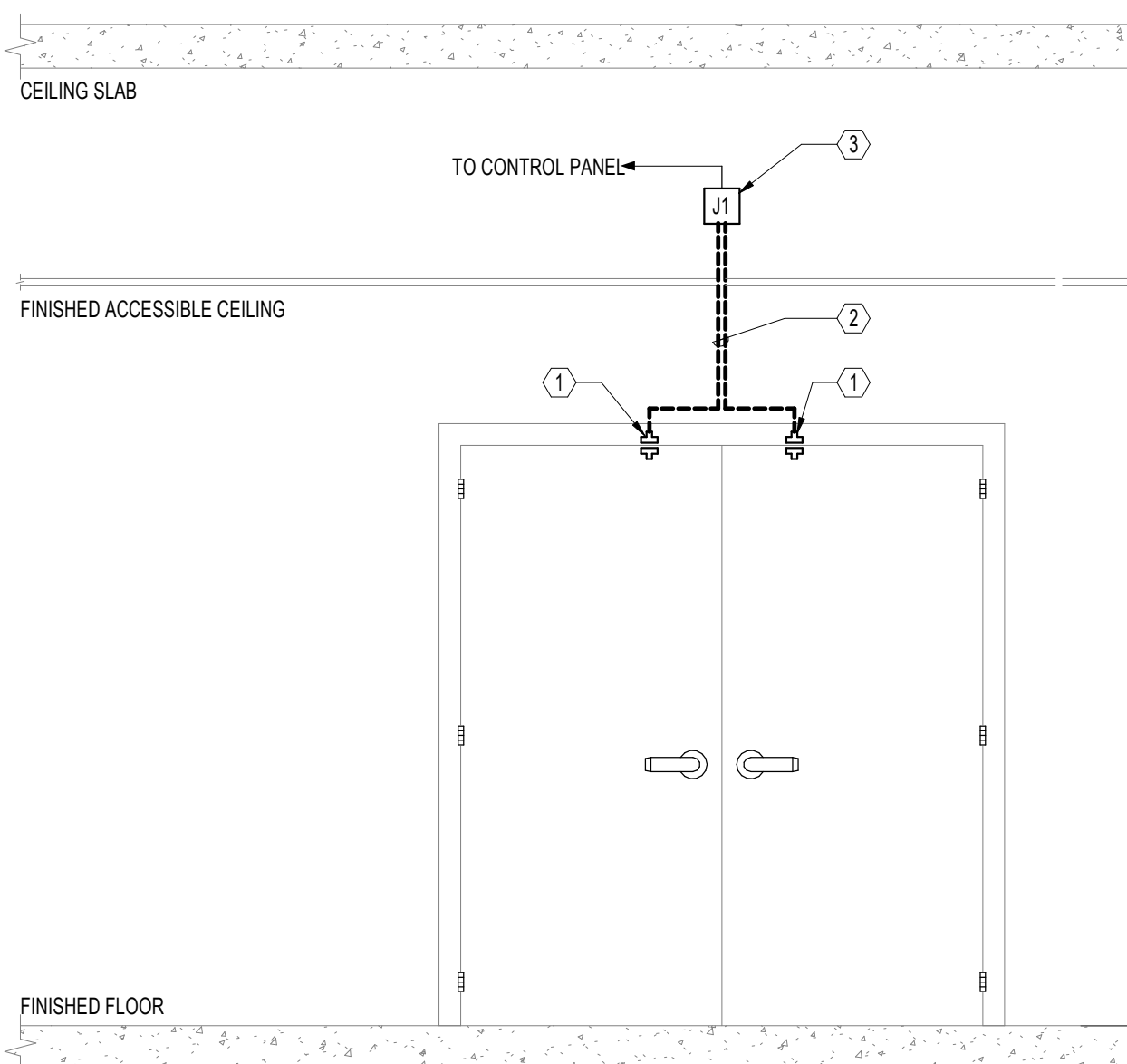
- NOTES:
- DOOR POSITION SWITCH (1) (RECESSED)
 - STUB 3/4" CONDUIT WITH DRAG LINE (2)
 - PROVIDE 4" x 4" x 2-1/8" DEEP JUNCTION BOX WITH COVER MOUNTED ABOVE DOOR, ABOVE ACCESSIBLE CEILING (3)

2 DOOR CONTACT (SINGLE DOOR)
SCALE: NONE



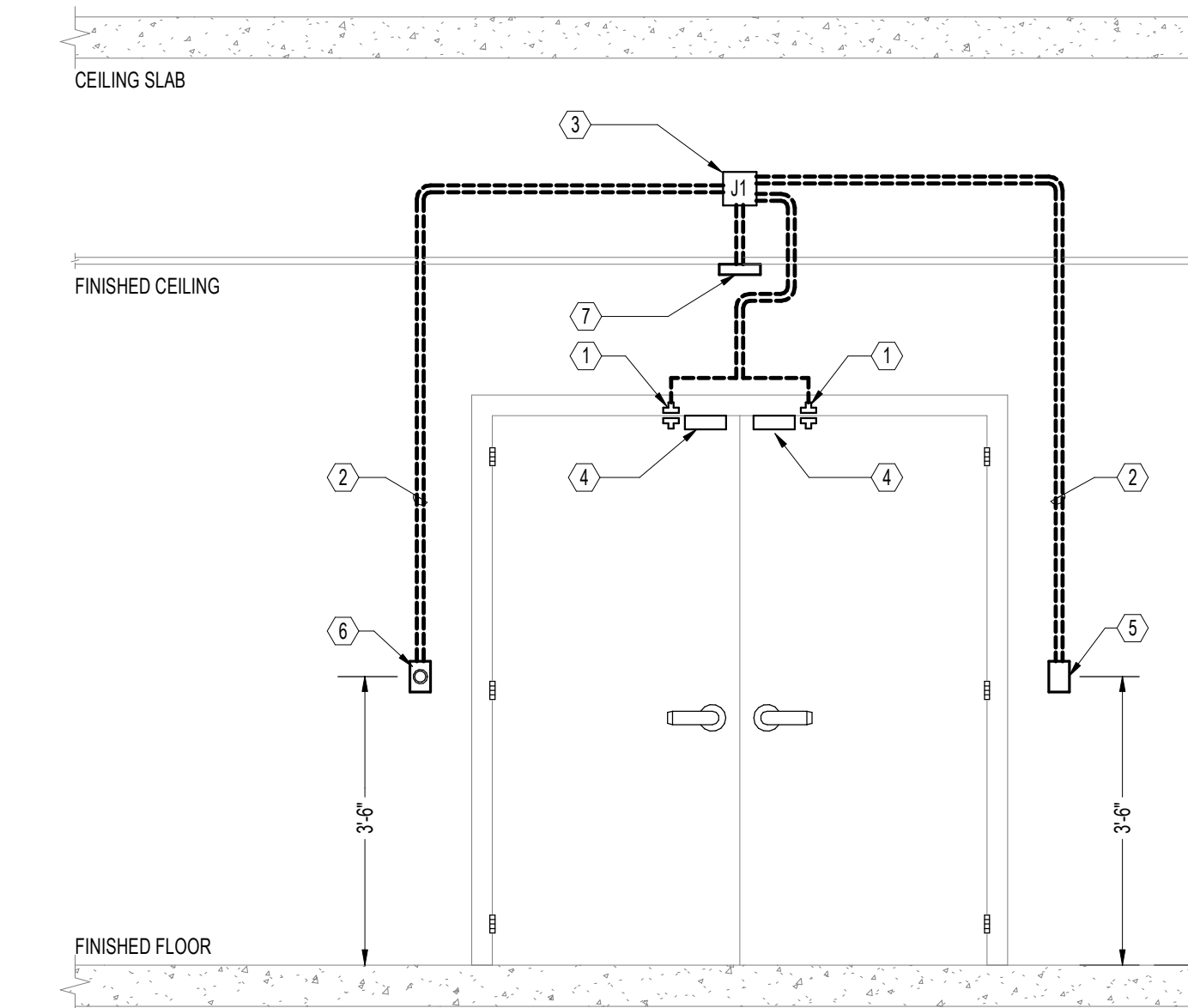
- NOTES:
- DOOR POSITION SWITCH (1) (RECESSED)
 - STUB 3/4" CONDUIT WITH DRAG LINE (2)
 - PROVIDE 4" x 4" x 2-1/8" DEEP JUNCTION BOX WITH COVER MOUNTED ABOVE DOOR, ABOVE ACCESSIBLE CEILING (3)
 - CARD READER (4) (UNPROTECTED SIDE)
 - LOCKING DEVICE: ELECTRIC STRIKE (5)
 - STUB 3/4" CONDUIT OR GREENFIELD DOWN DOOR FRAME ON THE HINGE SIDE OF THE DOOR BACK BOX, TO JUNCTION BOX LOCATED ABOVE ACCESSIBLE CEILING (6)
 - REQUEST TO EXIT MOTION DETECTOR (7) (PROTECTED SIDE)

7 ELECTRIC STRIKE CARD READER (SINGLE DOOR)
SCALE: NONE



- NOTES:
- DOOR POSITION SWITCH (1) (RECESSED)
 - STUB 3/4" CONDUIT WITH DRAG LINE (2)
 - PROVIDE 4" x 4" x 2-1/8" DEEP JUNCTION BOX WITH COVER MOUNTED ABOVE DOOR, ABOVE ACCESSIBLE CEILING (3)

4 DOOR CONTACT (DOUBLE DOOR)
SCALE: NONE



- NOTES:
- DOOR POSITION SWITCH (1) (RECESSED)
 - STUB 3/4" CONDUIT WITH DRAG LINE (2)
 - PROVIDE 4" x 4" x 2-1/8" DEEP JUNCTION BOX WITH COVER MOUNTED ABOVE DOOR, ABOVE ACCESSIBLE CEILING (3)
 - LOCKING DEVICE: MAGNETIC LOCK (4)
 - CARD READER (5) (UNPROTECTED SIDE)
 - REQUEST TO EXIT PUSH BUTTON (6) (PROTECTED SIDE)
 - REQUEST TO EXIT MOTION DETECTOR (7) (PROTECTED SIDE)

1 MAGNETIC LOCK, PUSH BUTTON, MOTION DETECTOR
REQUEST EXIT CARD READER-INTERCOM (DOUBLE
DOOR)
SCALE: NONE