

SECURITY SYMBOL LIST

SECURITY SYMBOLS

ACF X	SECURITY CAMERA FIXED XX = FLOOR YYY = TYPE ZZZ = NUMBER
ACP X	SECURITY CAMERA PTZ XX = FLOOR YYY = TYPE ZZZ = NUMBER
AVR	NETWORK VIDEO RECORDER
DVR	DIGITAL VIDEO RECORDER
ENC	VIDEO ENCODER
DEC	VIDEO DECODER
ACS	ACCESS CONTROL PANEL
IDS	INTRUSION DETECTION PANEL
CR X	CARD READER B = BIOMETRIC M = MAGNETIC STRIKE P = PROXIMITY F = PROXIMITY KEYPAD
DC	DOOR CONTACT
WC	WINDOW CONTACT
TR	TRANSFER HINGE (POWER & RX)
EL X	ELECTRIC LOCKSET WITH REKEY SWITCH C = FAIL SECURE (DEFAULT) S = FAIL SAFE
ES X	ELECTRIC STRIKE C = FAIL SECURE (DEFAULT) S = FAIL SAFE
ML X	ELECTROMAGNETIC LOCK S = SINGLE D = DOUBLE
CS X	CRASH BAR M = MANUAL E = ELECTRIC D = SEPARATED GRESS
EDR X	EMERGENCY DOOR RELEASE P = PULL STATION G = BREAK GLASS STATION
RE X	REQUEST TO EXIT M = MOTION DETECTOR P = PUSH BUTTON
DB	DOOR RELEASE BUTTON
DO	DOOR OPENER (AUTOMATIC)
KS	KEY SWITCH
WT	WIRELESS TRANCEIVER
DS	DURESSPANIC BUTTON
GS	GLASS BREAK SENSOR
MD	MOTION DETECTOR
LA	LOCAL ALARM SOUNDER
JT	JUNCTION BOX - FLX/W/W/D
JZ	JUNCTION BOX - FLX/W/W/D
FR	FIRE INTERFACE RELAY (CLASS 'E')
IS X	INTERCOM M = MASTER STATION S = SUB STATION
VI X	VIDEO INTERCOM M = MASTER STATION S = SUB STATION
SV X	SERVER A = ACCESS CONTROL V = VIDEO SURVEILLANCE I = INTERCOM
WS X	WORKSTATION A = ACCESS CONTROL V = VIDEO SURVEILLANCE I = INTERCOM
LM XX	LED MONITOR XX = SIZE
TS XX	TOUCHSCREEN MONITOR XX = SIZE
PC X	PATCH PANEL E = ETHERNET F = FIBER OPTIC
FW X	FIBER MEDIA CONVERTER C = COAXIAL E = ETHERNET I = TWISTED PAIR
AP	ANNUNCIATOR PANEL
ET	EMERGENCY TELEPHONE
CP	CAMERA POWER SUPPLY
LP	LOCK POWER SUPPLY
DP	DEVICE POWER SUPPLY
UPS	UNINTERRUPTIBLE POWER SUPPLY
CS	CARD SWIPE FOR UNIT LOCKDOWN
LU	UNIT LOCKDOWN BUTTON

SECURITY DEVICE DESIGNATIONS

XX-YYY-ZZZ

X = FLOOR NUMBER
Y = DEVICE TYPE
Z = SEQUENTIAL NUMBERS

SECURITY ABBREVIATIONS

ACP	ACCESS CONTROL PANEL
ACS	ACCESS CONTROL SYSTEM
AMP	AMPLIFIER
AP	ANNUNCIATOR PANEL
BAL	VIDEO BALUN
CAB	EQUIPMENT CABINET
CB	CRASH BAR
CPS	CAMERA POWER SUPPLY
CR	CARD READER
DB	DURESSPANIC BUTTON
DC	DOOR CONTACT
DEC	VIDEO DECODER
DPS	DEVICE POWER SUPPLY
DR	DOOR RELEASE BUTTON
DRM	DUAL READER MODULE PANEL
DVR	DIGITAL VIDEO RECORDER
EC	ELECTRICAL CONTRACTOR
EDR	EMERGENCY DOOR RELEASE
EL	ELECTRIC LOCKSET
ENC	VIDEO ENCODER
EP	EMERGENCY PHONE
ES	ELECTRIC STRIKE
FR	FIRE INTERFACE RELAY
FX	FIXED CAMERA
FM	FIBER OPTIC MEDIA CONVERTER
GB	GLASS BREAK SENSOR
GR	GROUND
IC	AUDIO INTERCOM
ICS	INTERCOM SYSTEM
IDS	INTRUSION DETECTION PANEL
IS	INTRUSION DETECTION SYSTEM
IN	INPUT
INP	INPUT PANEL
ITC	IT CONTRACTOR
JB	JUNCTION BOX
KVM	KEYBOARD/VIDEO/MOUSE
LA	LOCAL ALARM SOUNDER
LPS	LOCK POWER SUPPLY
MD	MOTION DETECTOR
ML	ELECTROMAGNETIC LOCK
MON	LED/CAM MONITOR
MUX	MULTIPLEXOR PANEL
NC	NORMALLY CLOSED
NET	NETWORK
NO	NORMALLY OPEN
NVR	NETWORK VIDEO RECORDER
OUT	OUTPUT
OUTP	OUTPUT PANEL
PB	PUSH BUTTON
PDU	POWER DISTRIBUTION UNIT
PP	PATCH PANEL
PTZ	PAN/TILT/ZOOM CAMERA
PWR	POWER
RACK	EQUIPMENT RACK
REL	RELAY
RK	REQUEST TO EXIT
SRM	SINGLE READER MODULE PANEL
SVR	SERVER
SW	SWITCH
UL	UNDERWRITERS LABORATORY
UN	UNLESS OTHERWISE NOTED
VAC	VOLTS AC
VDC	VOLTS DC
VI	VIDEO/AUDIO INTERCOM
VSS	VIDEO SURVEILLANCE SYSTEM
WC	WINDOW CONTACT
WDB	WIRELESS DURESSPANIC BUTTON
WP	WEATHER PROOF
WTS	WORKSTATION
XFMR	TRANSFORMER

SECURITY DRAWING LIST

DRAWING NO.	DRAWING TITLE
SC00-01	SECURITY GENERAL NOTES, SYMBOLS AND ABBREVIATIONS
SC00-21	SECURITY DETAILS
SC11-41	SECURITY LEVEL 6 FLOOR PLAN - SECTOR 1
SC11-42	SECURITY LEVEL 6 FLOOR PLAN - SECTOR 2
SC11-71	SECURITY LEVEL 7 FLOOR PLAN - SECTOR 1
SC11-72	SECURITY LEVEL 7 FLOOR PLAN - SECTOR 2
SC11-81	SECURITY ROOF PLAN - SECTOR 1
SC11-82	SECURITY ROOF PLAN - SECTOR 2
SC11-91	SECURITY PENITENTIARY PLAN - SECTOR 1
SC20-01	SECURITY RISER DIAGRAM

SECURITY GENERAL NOTES

- ALL WORK SHALL CONFORM TO THE LATEST REQUIREMENTS OF THE NATIONAL ELECTRICAL CODE, NFPA, UL, ADA AND ALL OTHER GOVERNING AGENCIES HAVING JURISDICTION.
- DRAWINGS ARE DIAGRAMMATIC AND INDICATE GENERAL ARRANGEMENT OF SYSTEMS AND WORK. FOLLOW DRAWINGS WHEN LAYOUT WORK AND CHECK DRAWINGS OF OTHER TRADES TO VERIFY SPACE CONDITIONS, MAINFRAIN HEADROOM AND SPACE CONDITIONS.
- SECURITY CONTRACTOR SHALL VISIT AND EXAMINE CAREFULLY THE EXISTING AREAS AFFECTED BY THIS WORK AND BECOME FAMILIAR WITH EXISTING CONDITIONS. SECURITY CONTRACTOR SHALL PERFORM THIS PRIOR TO SUBMITTING A PROPOSAL. SUBMISSION OF A PROPOSAL SHALL BE CONSTRUED AS EVIDENCE THAT SUCH AN EXAMINATION HAS BEEN MADE AND LATER CLAIMS WILL NOT BE RECOGNIZED FOR EXTRA LABOR, EQUIPMENT OR MATERIALS REQUIRED BECAUSE OF DIFFICULTIES ENCOUNTERED, WHICH COULD HAVE BEEN FORESEEN. HAD SUCH AN EXAMINATION BEEN MADE.
- VERIFY LOCATIONS OF ALL ACCESS CONTROL, INTRUSION, VIDEO SURVEILLANCE AND INTERCOM DEVICES IN FINISHED SPACES WITH ARCHITECTURAL DRAWINGS OF INTERIOR DETAILS AND FINISH.
- BEFORE PERFORMING ANY INSTALLATION, THE SECURITY CONTRACTOR SHALL SEE THAT IT DOES NOT INTERFERE WITH CLEARANCES REQUIRED FOR FINISHED COLUMNS, HUNG CEILINGS, PLASTER, PARTITIONS, WALLS, ETC. AS SHOWN IN THE ARCHITECTURAL DRAWINGS AND DETAILS. IF ANY WORK IS SO INSTALLED AND IT LATER DEVELOPS THAT SUCH DETAILS OR DESIGN CANNOT BE FOLLOWED, THE SECURITY CONTRACTOR AT HIS OWN EXPENSE SHALL MAKE SUCH CHANGES IN THE WORK AS DIRECTED BY THE ARCHITECT, AS WELL AS TO PERMIT THE INSTALLATION OF THE ARCHITECTURAL WORK AS SHOWN ON THE PLANS AND DETAILS.
- HOMERUN ALL CABLES VIA CONDUITS, J-HOOKS AND ABOVE ACCESSIBLE CEILING DIRECTLY TO THE IDF/SECURITY ROOMS AS INDICATED ON DRAWINGS. ATTACHMENT TO DRYWALL IS NOT ACCEPTABLE.
- FIRESTOPPING SHALL BE INSTALLED WHEREVER CABLEING OR RACEWAYS CROSS FIRE RATED CONSTRUCTION.
- ALL CUTTING AND PATHING SHALL BE COORDINATED WITH THE GENERAL CONTRACTOR.
- ANY DAMAGE TO PARTITIONS, FLOORS, CEILINGS OR ANY PART OF THE BUILDING OR EQUIPMENT CAUSED BY THE WORK OF THE SECURITY CONTRACTOR SHALL BE MADE GOOD AT NO ADDITIONAL EXPENSE TO THE OWNER.
- MECHANICAL DOOR LOCK HARDWARE SHALL BE SUPPLIED BY OTHERS. COORDINATE WITH ARCHITECT. SECURITY CONTRACTOR RESPONSIBLE FOR FINAL TERMINATIONS.
- COORDINATE ALL ELECTRICAL POWER, CONDUIT AND OUTLET BOX REQUIREMENTS WITH ELECTRICAL CONTRACTOR.
- ALL J-BOXES & CONDUITS SHALL BE PROVIDED BY ELECTRICAL CONTRACTOR UNLESS OTHERWISE NOTED. COORDINATION AS REQUIRED.
- SECURITY CONTRACTOR SHALL PROVIDE ANY AND ALL REQUIRED TROUGH CONNECTIONS TO OR TRANSITIONS FROM WALL/FIELD TROUGH AS REQUIRED.
- COORDINATE EXACT LOCATIONS, MOUNTING AND FINISHES OF ACCESS CONTROL, INTRUSION, VIDEO SURVEILLANCE AND INTERCOM DEVICES WITH ARCHITECT.
- COORDINATE PATCH PANEL LOCATIONS, ETHERNET SWITCHING, PORT ALLOCATION, IP ADDRESS INFO AS REQUIRED WITH OWNER.
- FINAL ACCEPTANCE IS REQUIRED TO BE MADE AFTER THE SECURITY CONTRACTOR HAS DEMONSTRATED THAT THE WORK FULFILLS THE REQUIREMENTS OF THE PLANS AND SPECIFICATIONS.
- PROVIDE SHOP DRAWINGS & SUBMITTALS FOR REVIEW AND APPROVAL PRIOR TO CONSTRUCTION.
- SECURITY CONTRACTOR SHALL PROVIDE COMPLETE AS-BUILT DOCUMENTATION AND ACD DRAWINGS.
- ALL LOCKS FAILSAFE UNLESS OTHERWISE NOTED.

SECURITY INSTALLATION NOTES

- AREAS OF SECURITY INSTALLATION SHALL BE CLEAN AND SECURE.
- SECURITY CONDUIT SYSTEM MUST BE COMPLETE WITH ALL CONNECTIONS MADE END TO END.
- PULL STRING MUST BE INSTALLED IN SECURITY CONDUIT.
- MILLWORK AND FURNITURE THAT HOUSE SECURITY EQUIPMENT SHALL BE IN PLACE.
- REQUIRED MODIFICATIONS/BOXES/CUTS TO MILLWORK AND FURNITURE SHALL BE COMPLETE.
- REQUIRED EQUIPMENT COOLING VENTILATION SHALL BE IN PLACE AND OPERATIONAL.



225 Franklin Street, Suite 1100
Boston, MA 02110
617.478.0300
617.478.0321
www.perkinswill.com

CLIENT
Maine Medical Center
MaineHealth

22 Bramhall Street
Portland, ME 04102

CONSULTANTS
CIVIL/LANDSCAPE ARCHITECT
Sebago Technics
75 John Roberts Road, Suite 1A, South Portland, ME 04106

STRUCTURAL/ENR/BUILDING ENVELOPE CONSULTANT
Simpson Gumpertz & Heger Inc.
41 Sevon Street, Building 1, Suite 510, Waltham, MA 02453

MEPP ENGINEER/COE
AKF Group LLC
99 Bedford Street, 2nd Floor, Boston, MA 02111

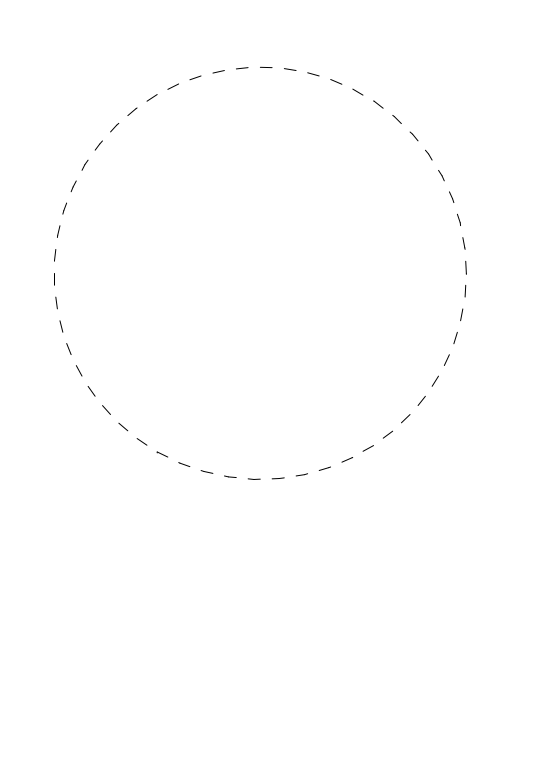
CONSTRUCTION MANAGER
Turner Construction
2 Seaport Lane, Suite 200, Boston, MA 02210

ELEVATOR CONSULTANT
VDA (Van Deusen & Associates)
101 Summer Street, 4th Floor, Boston MA 02110

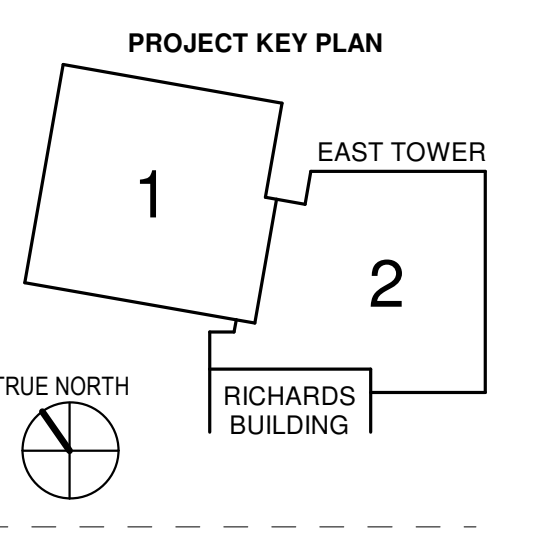
COST ESTIMATOR
D. G. Jones International
3 Baldwin Green Common, Suite 202, Woburn, MA 01801

PROJECT TITLE

East Tower 6 & 7 Addition
22 Bramhall Street
Portland, ME 04102

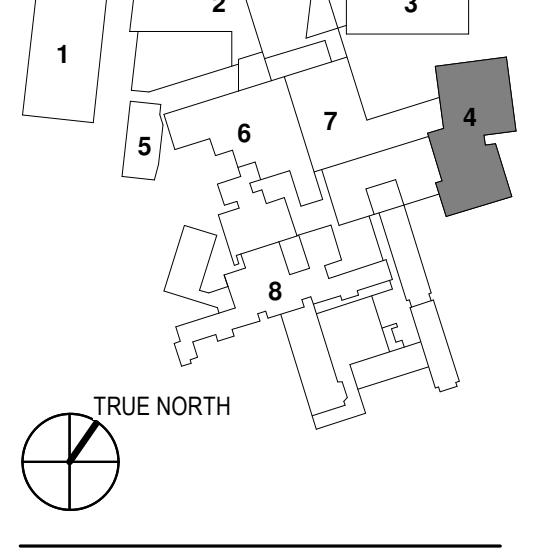


KEY PLANS



OVERALL KEY PLAN

- GILMAN GARAGE
- CONGRESS STREET
- VISITOR GARAGE
- EAST TOWER
- CENTRAL UTILITY PLANT
- BEAN BUILDING
- RICHARDS BUILDING
- MAINE GENERAL BUILDING



CONSTRUCTION DOCUMENTS
JANUARY 28, 2018

1	ADDENDUM NO. 1	03/22/18
NO	ISSUE	DATE
Job Number: B150312-000		
Drawn	NU	
Checked	BN	
Approved	BN	

TITLE
SECURITY GENERAL NOTES, SYMBOLS AND ABBREVIATIONS
SHEET NUMBER

SC00-01