

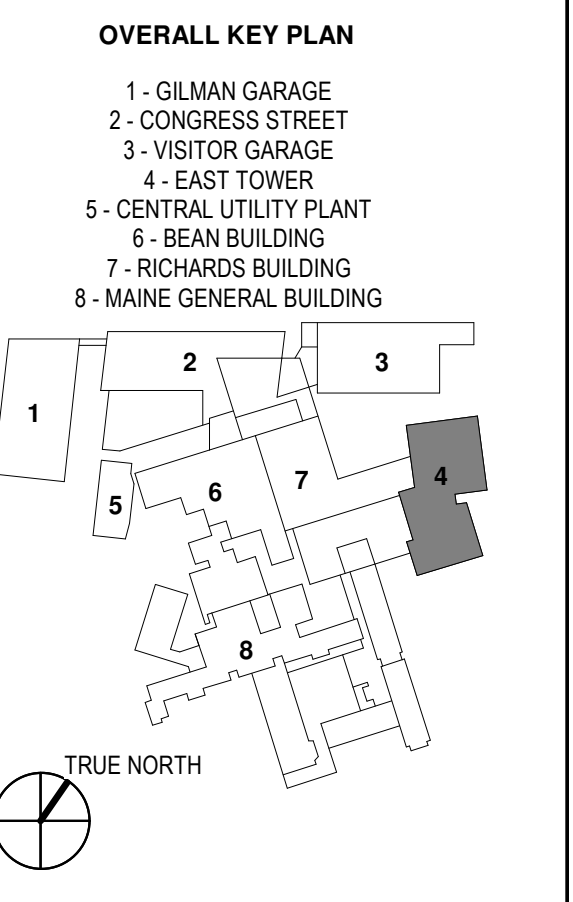
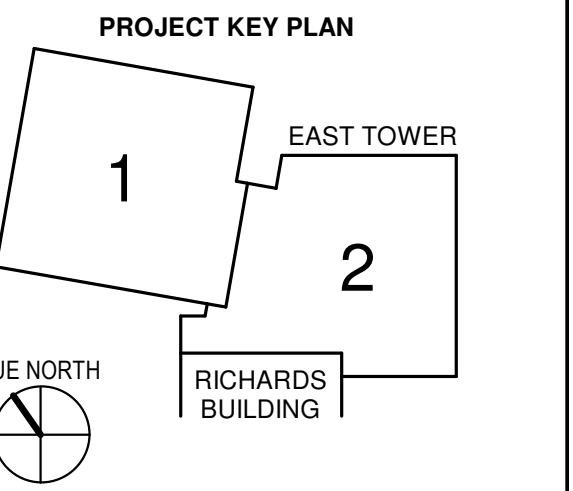
CONSULTANTS

- CIVIL / LANDSCAPE ARCHITECT  
**Sebago Technics**  
75 John Roberts Road, Suite  
1A, South Portland, ME 04106
- STRUCTURAL ENG. BUILDING ENVELOPE CONSULTANT  
**Simpson Gumpertz & Hager Inc.**  
41 Seyon Street, Building 1, Suite 570,  
Waltham, MA 02453
- MEPP ENGINEER / CODE  
**AKF Group LLC**  
99 Bedford Street, 2nd Floor, Boston MA 02111
- CONSTRUCTION MANAGER  
**Turner Construction**  
2 Seaport Lane, Suite 200, Boston, MA 02210
- ELEVATOR CONSULTANT  
**VDA (Van Deusen & Associates)**  
101 Summer Street, 4th Floor, Boston MA  
02110
- COST ESTIMATOR  
**D. G. Jones International**  
3 Baitwin Green Common, Suite 202, Woburn, MA 01801

PROJECT TITLE

**East Tower 6 & 7  
Addition**  
22 Bramhall Street  
Portland, ME 04102

KEY PLANS

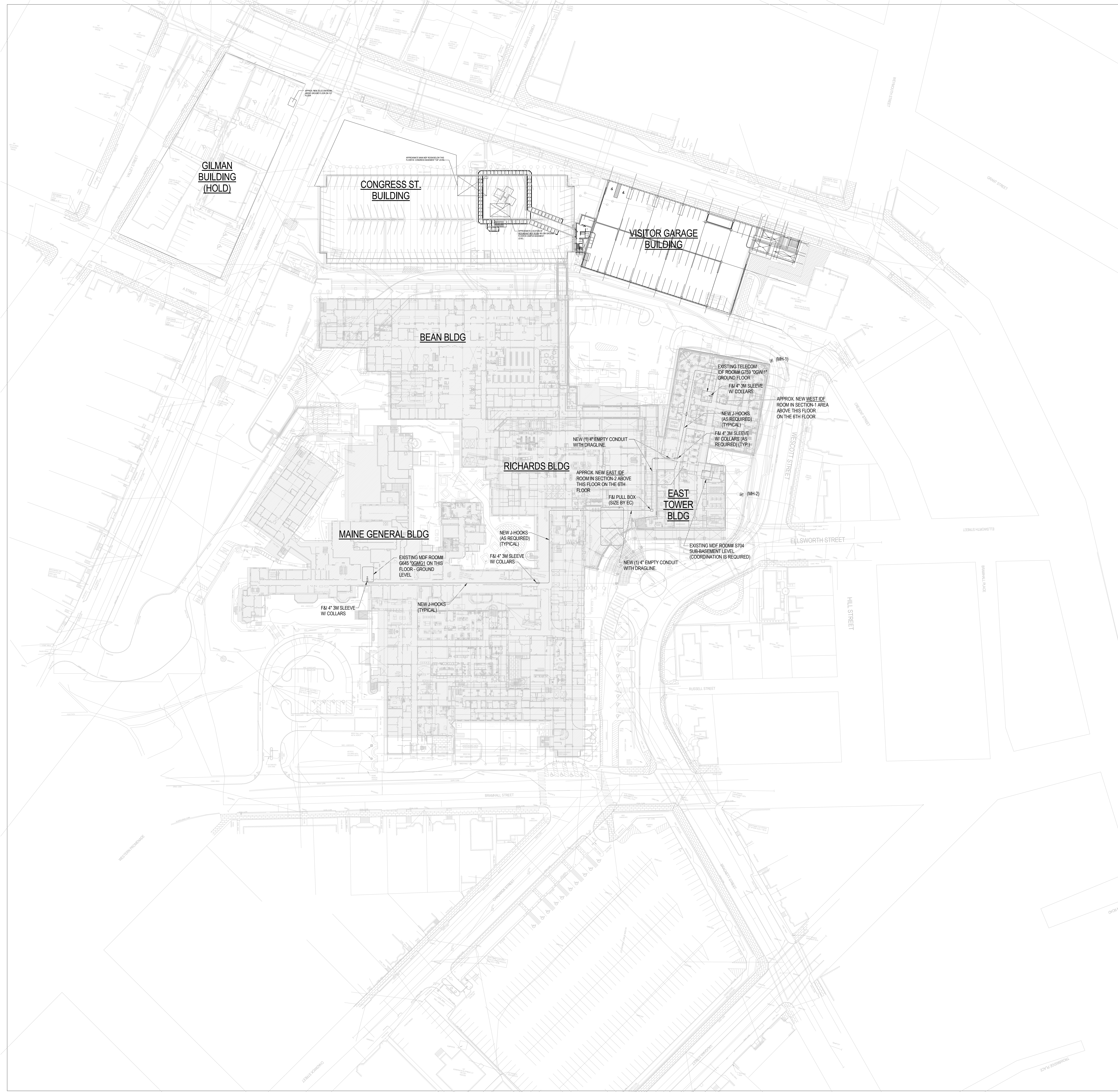


CONSTRUCTION DOCUMENTS  
JANUARY 28, 2018

| NO         | ISSUE       | DATE |
|------------|-------------|------|
| Job Number | B150312-000 |      |
| Drawn      | EL          |      |
| Checked    | BN          |      |
| Approved   | BN          |      |

TITLE  
**COMMUNICATIONS  
MMC EAST TOWER  
SITE PLAN -  
GROUND FLOOR**  
SHEET NUMBER

**T30-01**



**1** MMC EAST TOWER SITE PLAN - GROUND FLOOR  
SCALE: 1" = 50'-0"