

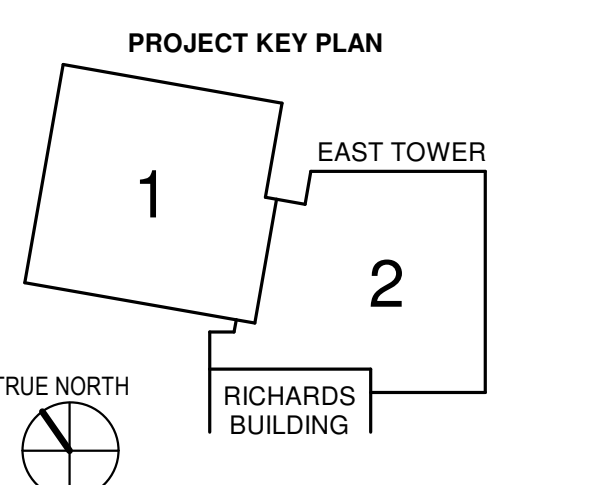
CONSULTANTS

- CIVIL/LANDSCAPE ARCHITECT  
**Sabago Technics**  
 75 John Roberts Road, Suite  
 1A, South Portland, ME 04106
- STRUCTURAL/ENR/BUILDING ENVELOPE CONSULTANT  
**Simpson Gumpertz & Heger Inc.**  
 41 Sevon Street, Building 1, Suite 501,  
 Waltham, MA 02453
- MEP/ELECTRICAL ENGINEER  
**AKF Group LLC**  
 99 Bedford Street, 2nd Floor, Boston, MA 02111
- CONSTRUCTION MANAGER  
**Turner Construction**  
 2 Seaport Lane, Suite 200, Boston, MA 02210
- ELEVATOR CONSULTANT  
**VDA (Van Deusen & Associates)**  
 101 Summer Street, 4th Floor, Boston, MA  
 02110
- COST ESTIMATOR  
**D. G. Jones International**  
 3 Baldwin Green Common, Suite 202, Woburn, MA 01801

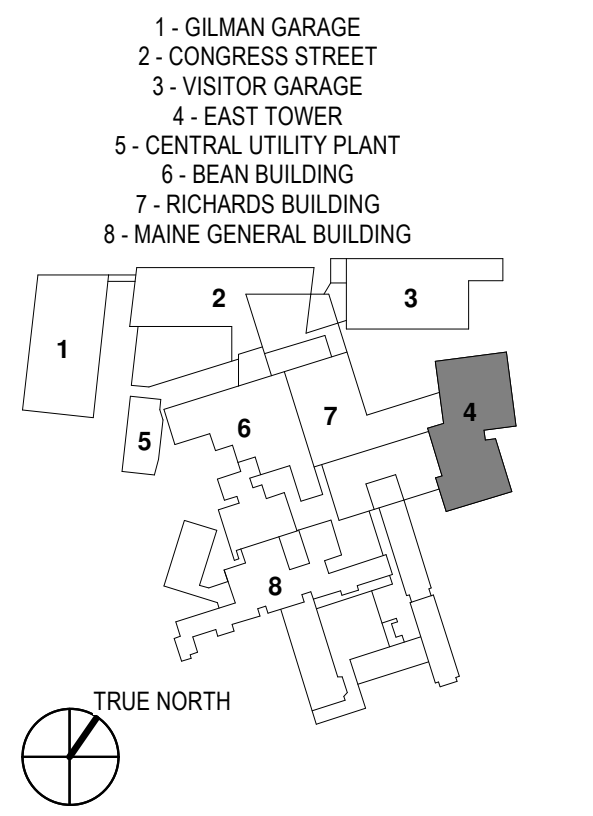
PROJECT TITLE

**East Tower 6 & 7  
 Addition**  
 22 Bramhall Street  
 Portland, ME 04102

KEY PLANS



OVERALL KEY PLAN



CONSTRUCTION DOCUMENTS  
 JANUARY 28, 2018

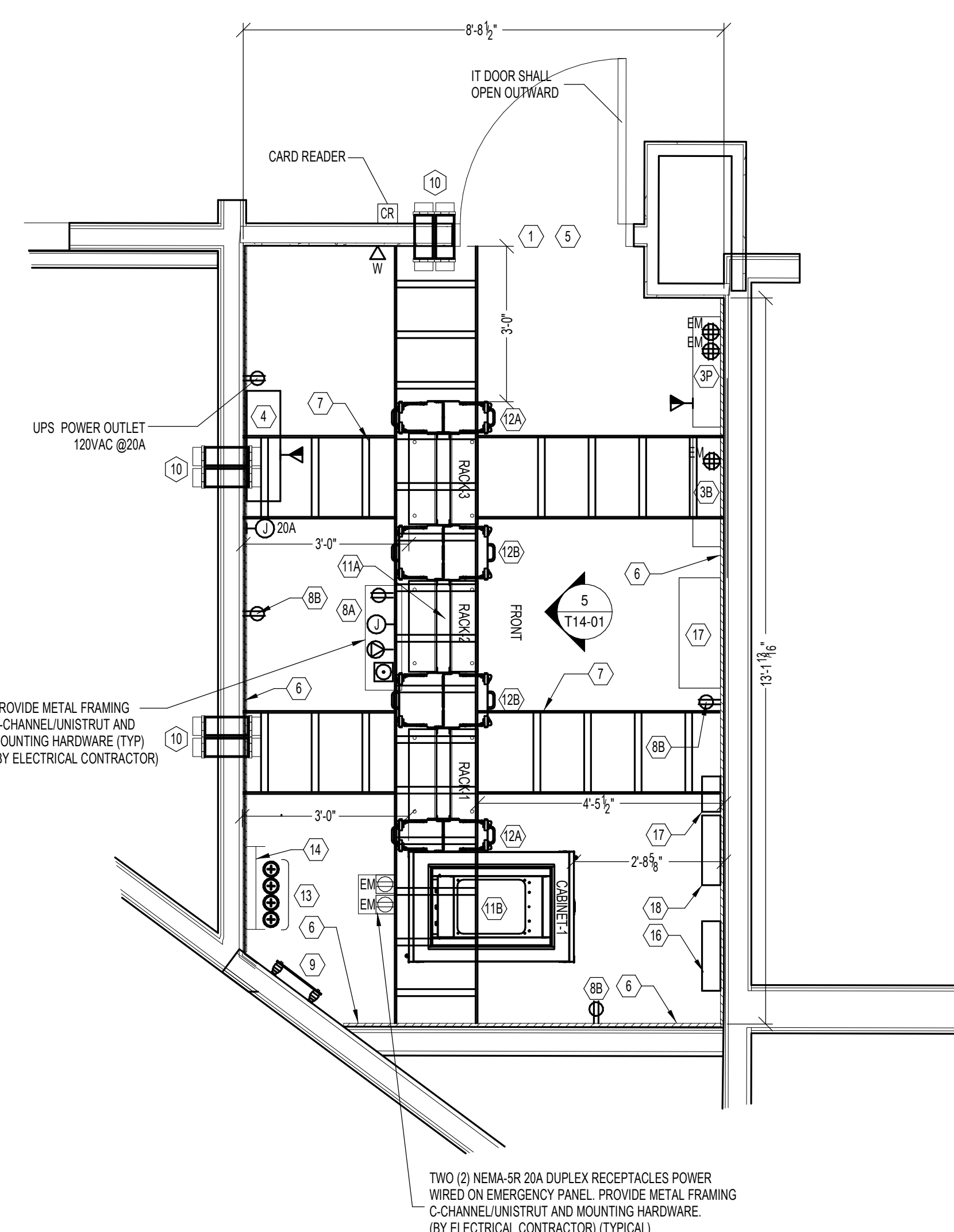
NO	ISSUE	DATE
1	ADDENDUM NO. 1	03/22/18

Job Number: B150312-000  
 Drawn: EL  
 Checked: BN  
 Approved: BN

TITLE  
**COMMUNICATION  
 PART PLAN AND  
 ELEVATION**

SHEET NUMBER

**T14-01**

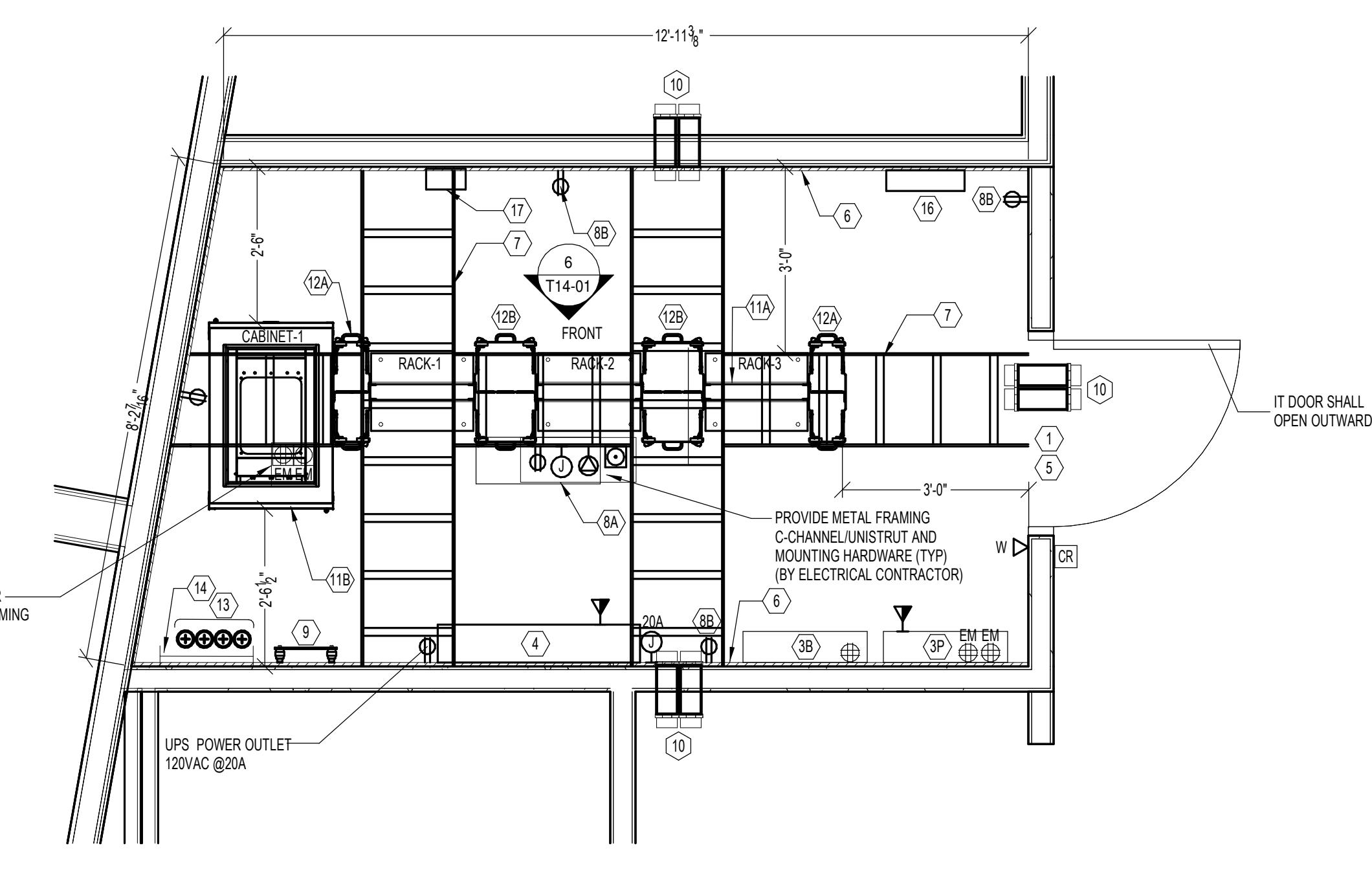


**1 TYPICAL WEST - IDF ROOM LAYOUT - LEVEL 6 & 7**  
 SCALE: 1/2"=1'-0"

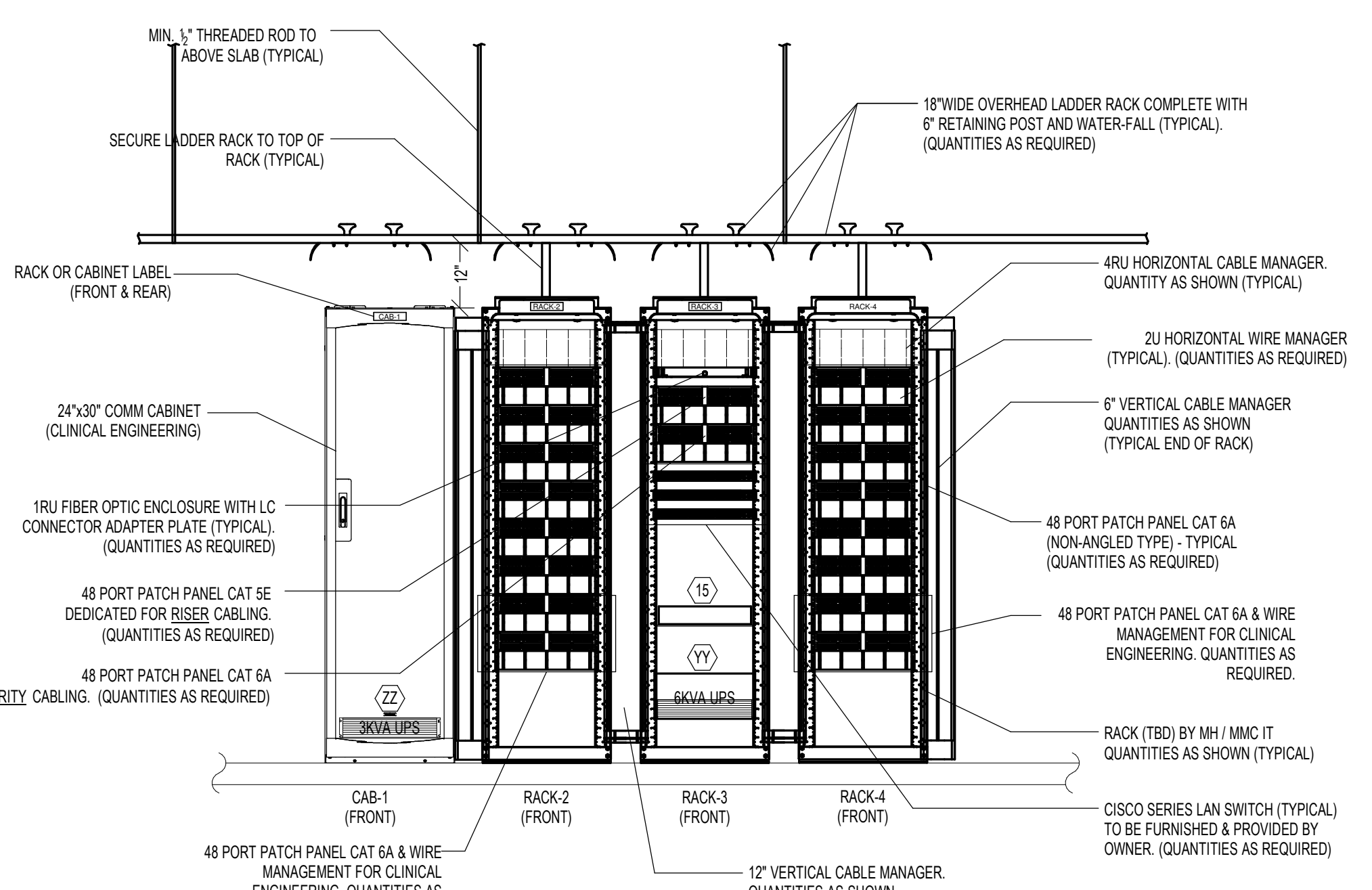
- KEY NOTES
- STATIC DISSIPATIVE TILE SIMILAR TO ARMSTRONG SOT 4-PART SYSTEM SHALL BE INSTALLED AT EQUIPMENT ROOM (TYPICAL)
  - THE 4-PART COMPONENTS MUST BE USED TOGETHER TO OBTAIN THE STATIC DISSIPATIVE PERFORMANCE REQUIREMENTS:
    - TILE WITH INTEGRAL STATIC DISSIPATIVE ELEMENTS
    - 5-300 STATIC DISSIPATIVE ADHESIVE
    - COPPER GROUNDING STRIPS
    - 5-302 STATIC DISSIPATIVE POLISH
    - BONDING COPPER STRIP TO 108
  - RESERVED FOR NURSE CALL PANELS (PRIMARY AND BOOSTER)
    - PRIMARY PANEL. PROVIDE (2) QUAD, 20A @ 120VAC EMERGENCY POWER INSIDE THE PANEL.
    - BOOSTER PANEL. PROVIDE (1) QUAD, 20A @ 120VAC EMERGENCY POWER INSIDE THE PANEL. PROVIDE (1) CAT 4 UTP FLEXUM CABLE FOR DATA NETWORK CONNECTION.
  - SECURITY PANEL LOCATION WITH DATA PORTS AND J-BOX @20A CIRCUIT.
  - RECOMMEND 1HR FIRE-RATED SLAB TO SLAB WALL.
  - 1" THICK FIRE RETARDANT PLYWOOD MOUNTED FLUSH ON THE WALL (TYPICAL)
  - 18" WIDE OVERHEAD LADDER RACK TO BE INSTALLED AT 7'-8" AFF (QTY AS REQUIRED)
  - REFERENCE POWER REQUIREMENT NETWORK RACK SCHEDULE BY E.C.
  - WALL MOUNTED CONVENIENCE OUTLET @ 120VAC, 20A CIRCUIT BY E.C.
  - TELECOM GROUNDING BUS BAR TO BUILDING STEEL.
  - 4" 3M FIRE BARRIER PASS THROUGH DEVICE (TYPICAL). QUANTITIES AS REQUIRED.
  - RACKS (TBD) BY 1M/MC IT.
    - GREAT LAKES 24" W X 30" D X 64" H COMM. CABINET FOR CLINICAL ENGINEERING
    - 4" VERTICAL WIRE MANAGEMENT (TYPICAL)
    - 12" VERTICAL WIRE MANAGEMENT (TYPICAL)
  - REFER TO RISER PATHWAY DIAGRAM DWG# T20-01
  - 18" VERTICAL LADDER RACK
  - RESERVED FOR BUMP AND GRAB WITH FIXED SHELF - ONLY ON 1TH FLOOR IDF ROOM. PROVIDE POWER 120VAC @20A AS REQUIRED (TO BE COORDINATED)
  - RESERVED FOR TV COAX WALLFIELD
  - TERMINAL BLOCK FOR 100-PAIR COPPER TIE - PAGING SYSTEM (TO BE COORDINATED)
  - RESERVED FOR WALL MOUNTED BOGEN AMPLIFIER. PROVIDE POWER 120VAC @20A AS REQUIRED (TO BE COORDINATED)

POWER REQUIREMENTS NETWORK RACK SCHEDULE

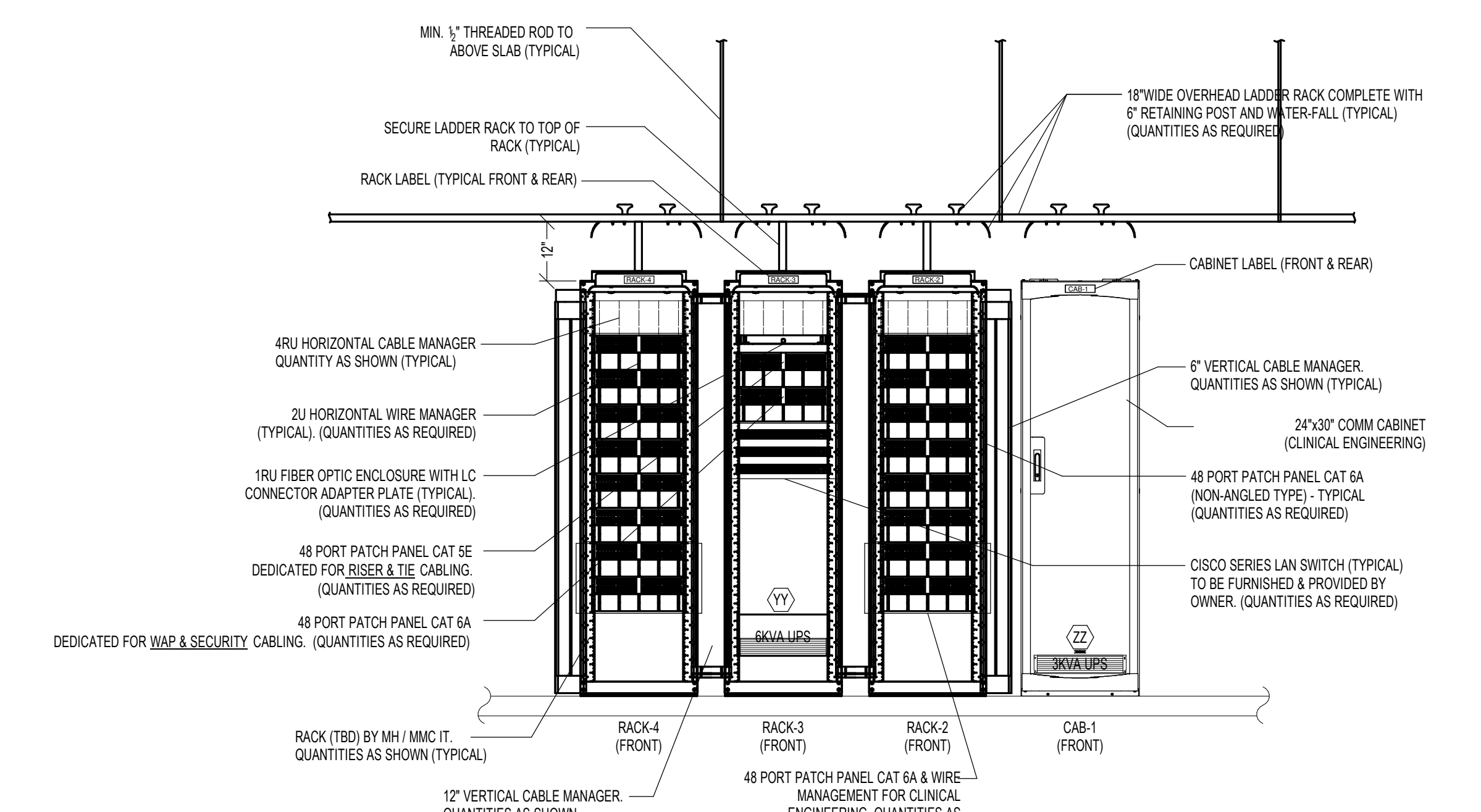
⊕	1200BY J-BOX FOR HARDWARE TERMINAL 3W (3PH - G) FOR APC 6A UPS WIRE CONNECTION - BY E.C. (COORDINATION WITH OWNER AS REQUIRED)
⊖	30A, 2P, 125MILL @ 300 TWIST LOCK RECEPTACLE FOR PDU PLUG TO BE INSTALLED AT 7'-8" AFF OR SAME LEVEL OF NEW LADDER RACK FACING THE REAR OF RACK - BY E.C. (COORDINATE WITH OWNER FOR EXACT PLUG TYPE & PDU AS REQUIRED)
⊞	APC VERTICAL PDU (L14-30P) TO BE INSTALLED BEHIND RACK. CONNECT TO POWER ABOVE RACK - BY E.C. APC PART APPROX (COORDINATE WITH OWNER FOR EXACT PLUG TYPE & PDU AS REQUIRED)
⊞	APC 80VA UPS TO BE F.A.I. BY OWNER. (COORDINATION AS REQUIRED)
⊞	NEMA 5-30P @ 120VAC, 20A CIRCUIT CONVENIENCE OUTLET - BY E.C.
⊞	APC 30VA UPS PDU & FIXED SHELF TO BE FURNISHED & INSTALLED BY OWNER. (COORDINATION AS REQUIRED)



**1 TYPICAL EAST - IDF ROOM LAYOUT - LEVEL 6 & 7**  
 SCALE: 1/2"=1'-0"



**5 (WEST) - RACK & CABINET ELEV. AND HARDWARE DETAILS**  
 SCALE: 1/2"=1'-0"



**6 (EAST) - RACK & CABINET ELEVATION. & HARDWARE DETAILS**  
 SCALE: 1/2"=1'-0"