

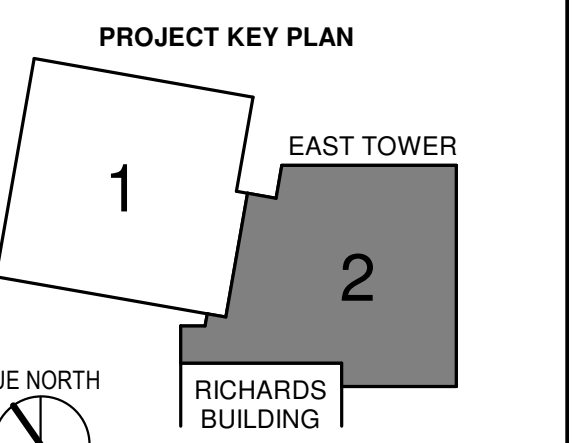
CONSULTANTS

- CIVIL/LANDSCAPE ARCHITECT
Sebago Technics
 75 John Roberts Road, Suite
 1A, South Portland, ME 04106
- STRUCTURAL/ENR/BUILDING ENVELOPE CONSULTANT
Simpson Gumpertz & Hager Inc.
 41 Seaver Street, Building 1, Suite 570,
 Waltham, MA 02453
- MEPP ENGINEER/CODE
AKF Group LLC
 99 Bedford Street, 2nd Floor, Boston MA 02111
- CONSTRUCTION MANAGER
Turner Construction
 2 Seaport Lane, Suite 200, Boston, MA 02210
- ELEVATOR CONSULTANT
VDA (Van Deusen & Associates)
 101 Summer Street, 4th Floor, Boston MA
 02110
- COST ESTIMATOR
D. G. Jones International
 3 Baldwin Green Common, Suite 202, Woburn, MA 01801

PROJECT TITLE

**East Tower 6 & 7
 Addition**
 22 Bramhall Street
 Portland, ME 04102

KEY PLANS



- OVERALL KEY PLAN
- GILMAN GARAGE
 - CONGRESS STREET
 - VISITOR GARAGE
 - EAST TOWER
 - CENTRAL UTILITY PLANT
 - BEAN BUILDING
 - RICHARDS BUILDING
 - MAINE GENERAL BUILDING

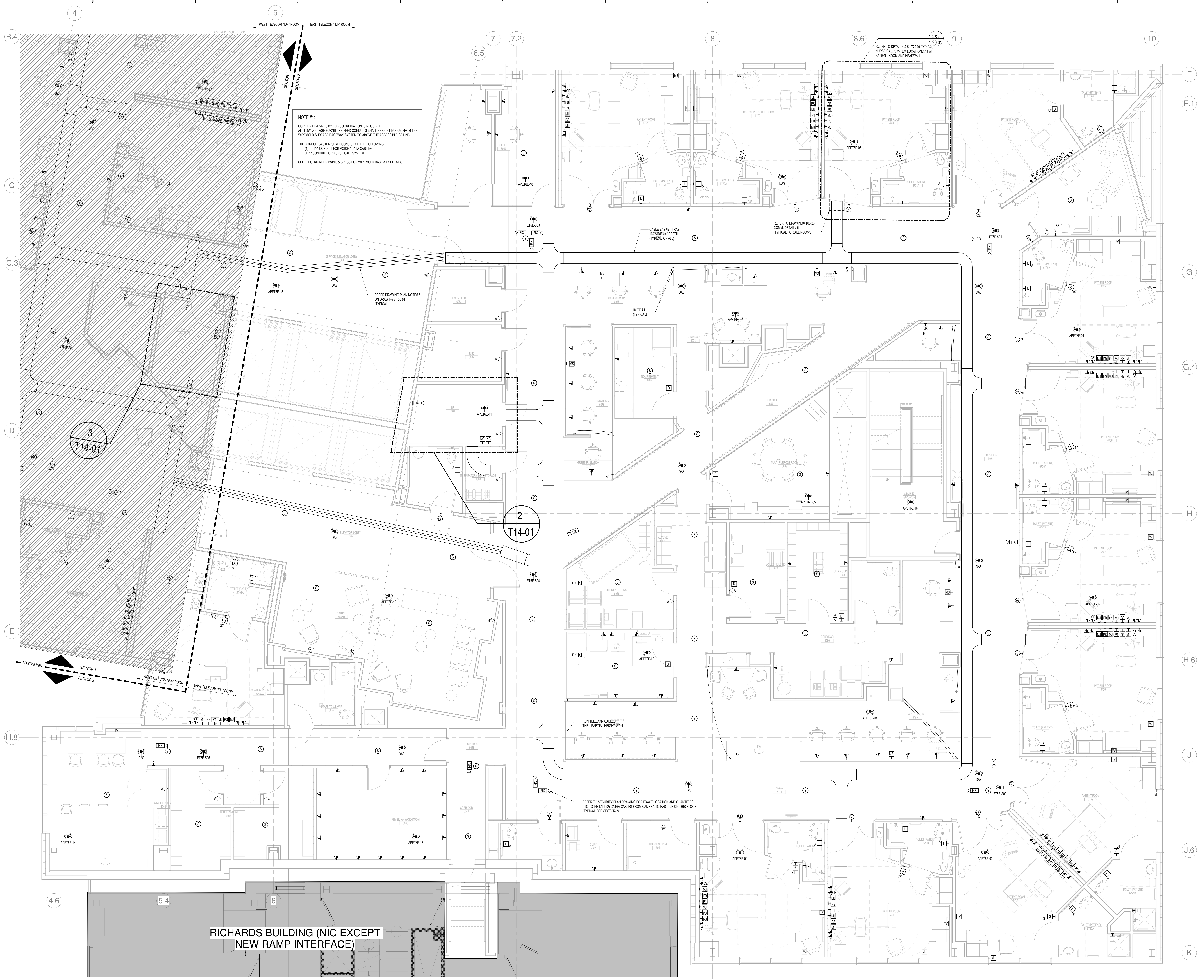
CONSTRUCTION DOCUMENTS
 JANUARY 28, 2018

2	ADDENDUM NO. 2	03/29/18
1	ADDENDUM NO. 1	03/22/18
NO.	ISSUE	DATE
Job Number	B150312-000	
Drawn	EL	
Checked	BN	
Approved	BN	

TITLE
**COMMUNICATION
 LEVEL 6 FLOOR
 PLAN - SECTOR 2**

SHEET NUMBER

T11-62



NOTE #1:
 CORE DRILL & SIZES BY EC (COORDINATION IS REQUIRED)
 ALL LOW VOLTAGE FURNITURE FEED CONDUITS SHALL BE CONTINUOUS FROM THE
 WIREMOLD SURFACE RACEWAY SYSTEM TO ABOVE THE ACCESSIBLE CEILING.
 THE CONDUIT SYSTEM SHALL CONSIST OF THE FOLLOWING:
 (1) 1/2" CONDUIT FOR VOICE DATA CABLEING.
 (2) 1" CONDUIT FOR NURSE CALL SYSTEM.
 SEE ELECTRICAL DRAWING & SPECS FOR WIREMOLD RACEWAY DETAILS.

REFER DRAWING PLAN NOTE 5
 ON DRAWING T00-01
 (TYPICAL)

CABLE BASKET TRAY
 1/2" WIDE x 4" DEPTH
 (TYPICAL FOR ALL)

REFER TO DRAWING T00-23
 CORNER ICE TALKER
 (TYPICAL FOR ALL ROOMS)

NOTE #1
 (TYPICAL)

RUN TELECOM CABLES
 THRU PARTIAL HEIGHT WALL

REFER TO SECURITY PLAN DRAWING FOR EXACT LOCATION AND QUANTITIES
 (1) TO INSTALL (2) CAT6A CABLES FROM CAMERA TO EAST DP ON THIS FLOOR
 (TYPICAL FOR SECTOR 2)

**RICHARDS BUILDING (NIC EXCEPT
 NEW RAMP INTERFACE)**