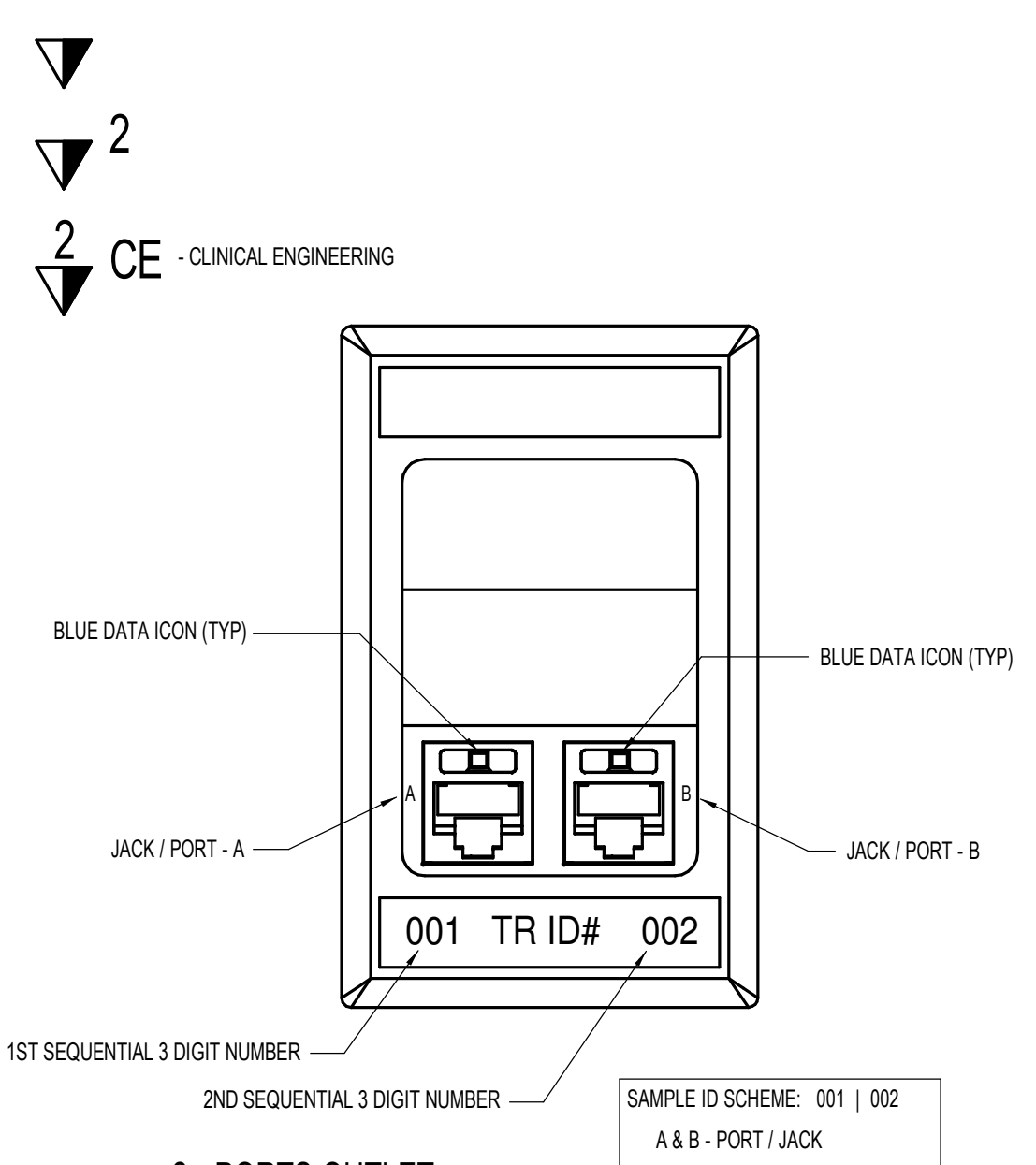
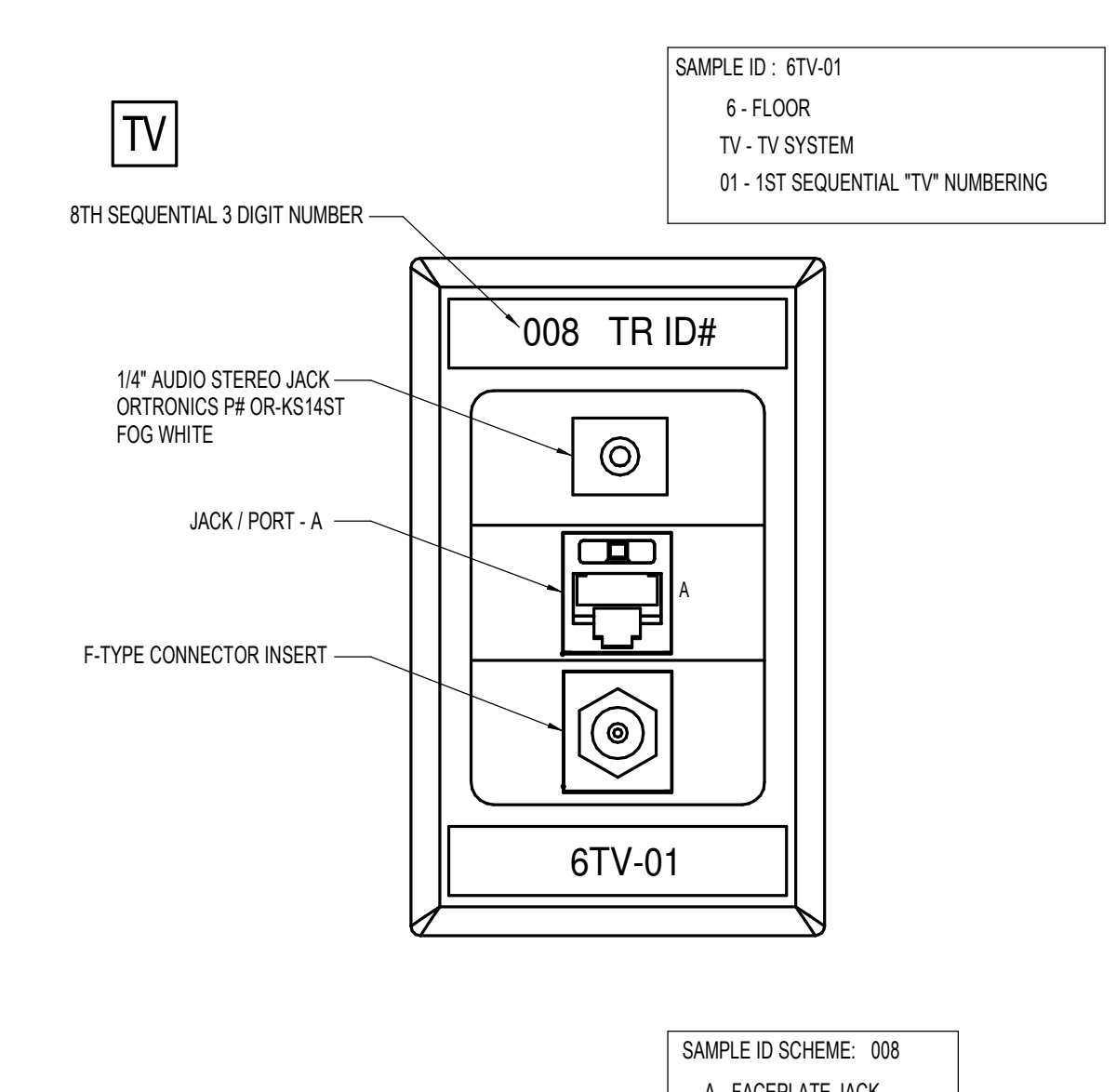
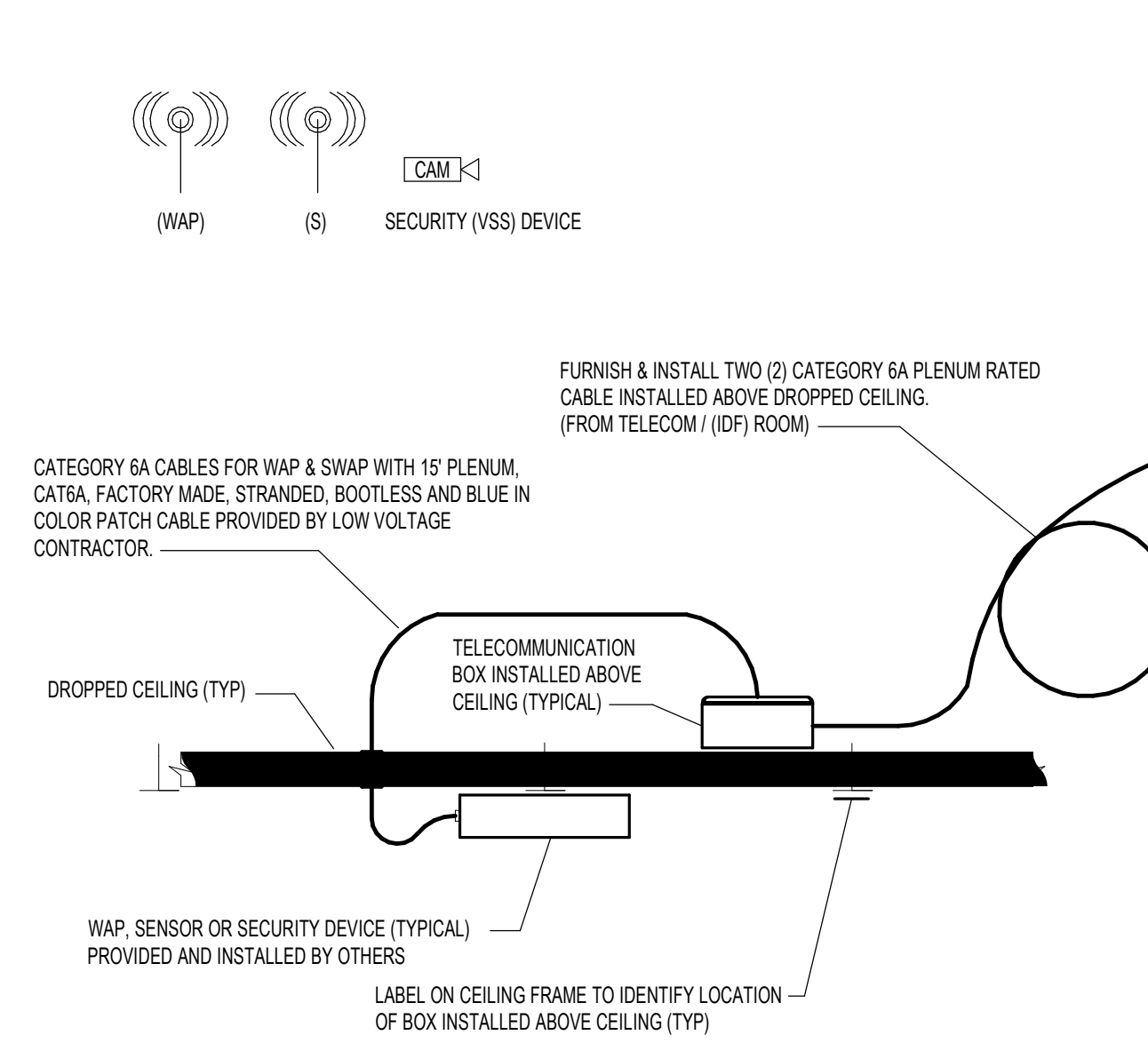


NO.	ISSUE	DATE
Job Number	B150312-000	
Drawn	EL	
Checked	BN	
Approved	BN	

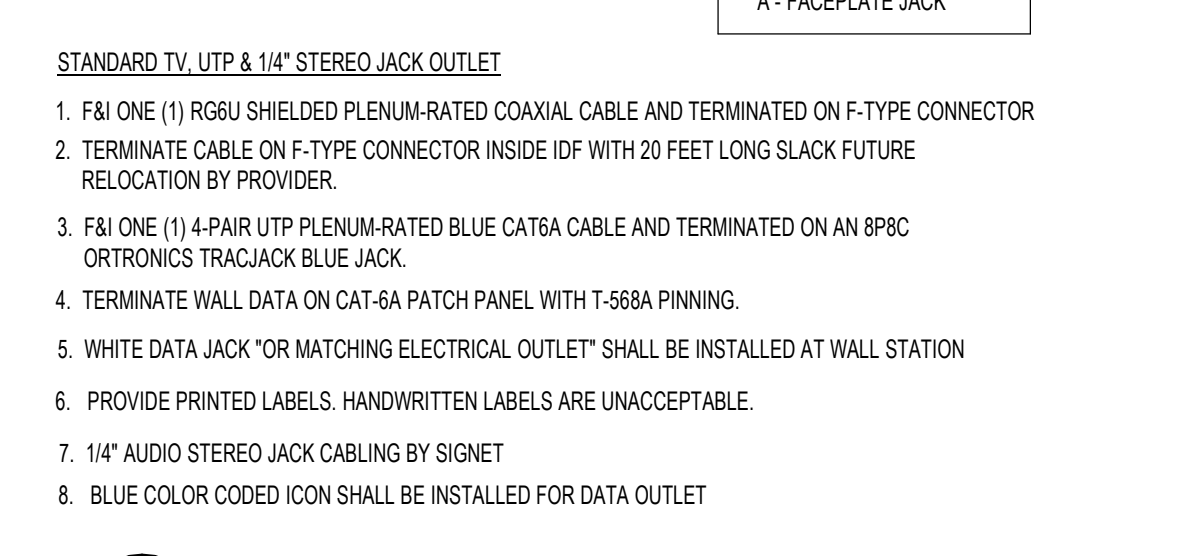


- 2- PORTS OUTLET**
SCALE: NONE
- F & T TWO (2) 4-PAIR UTP PLENUM RATED BLUE CAT6A CABLES AND TERMINATED ON EPIC ORTRONICS TRACJACK BLUE JACKS FOR VOICE/DATA OUTLET.
 - F & T TWO (2) 4-PAIR UTP PLENUM RATED BLUE CAT6A CABLES AND TERMINATED ON EPIC ORTRONICS TRACJACK BLUE JACKS FOR CE DATA OUTLET.
 - TERMINATE CABLES WITH TIA EIA T-568A PINNING.
 - TERMINATE NEW CABLE IN TELECOM ROOM ON CAT 6A PATCH PANEL.
 - PROVIDE COMPUTER GENERATED LABELS AS SHOWN IN BOTH WINDOWS. HANDWRITTEN LABELS ARE UNACCEPTABLE.
 - BLUE COLOR CODED ICONS SHALL BE INSTALLED FOR VOICE/DATA OUTLET.
 - BLUE COLOR CODED ICONS SHALL BE INSTALLED FOR CE DATA OUTLET.

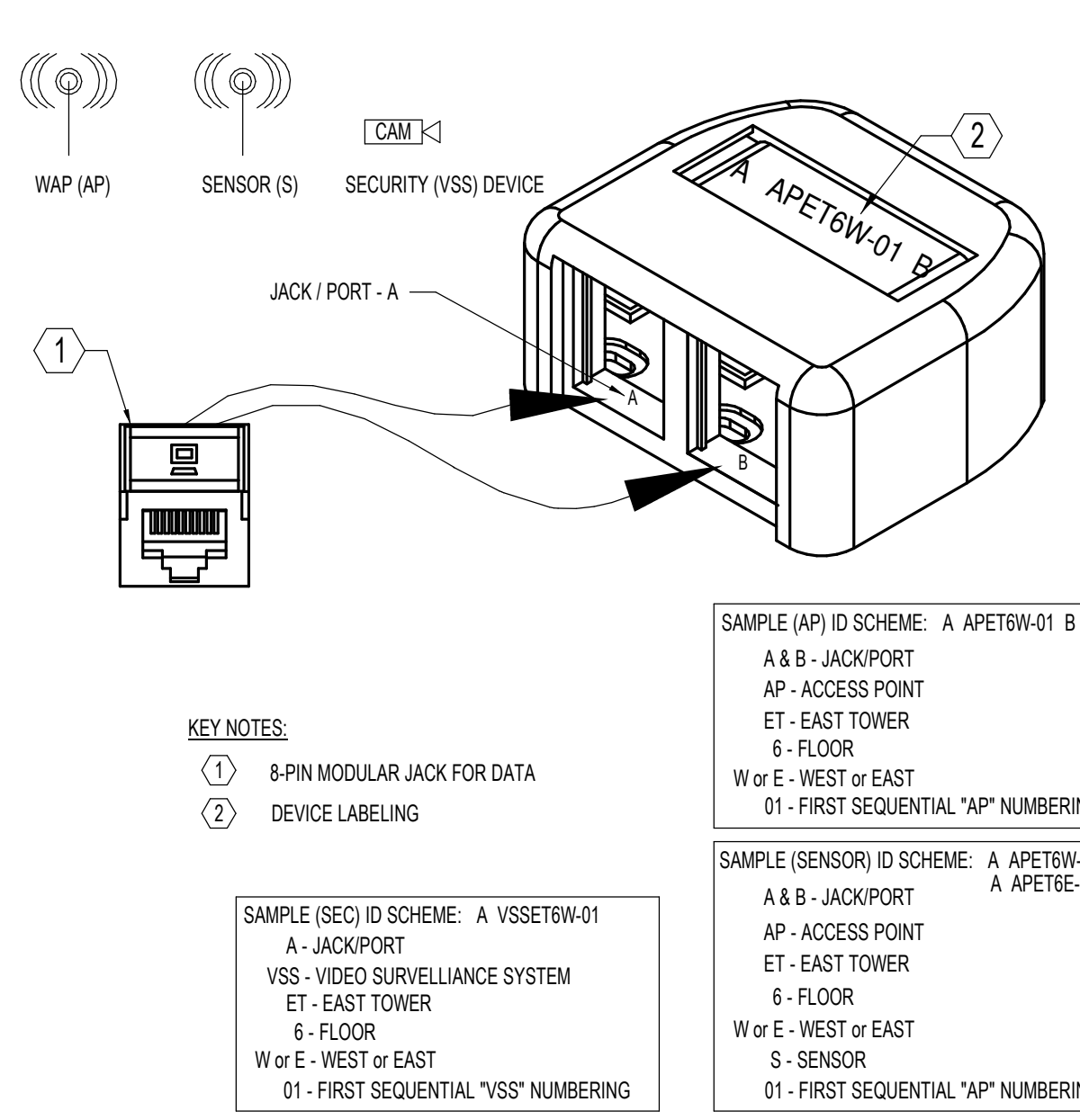
2- PORTS "FACEPLATE" DETAIL
SCALE: NONE



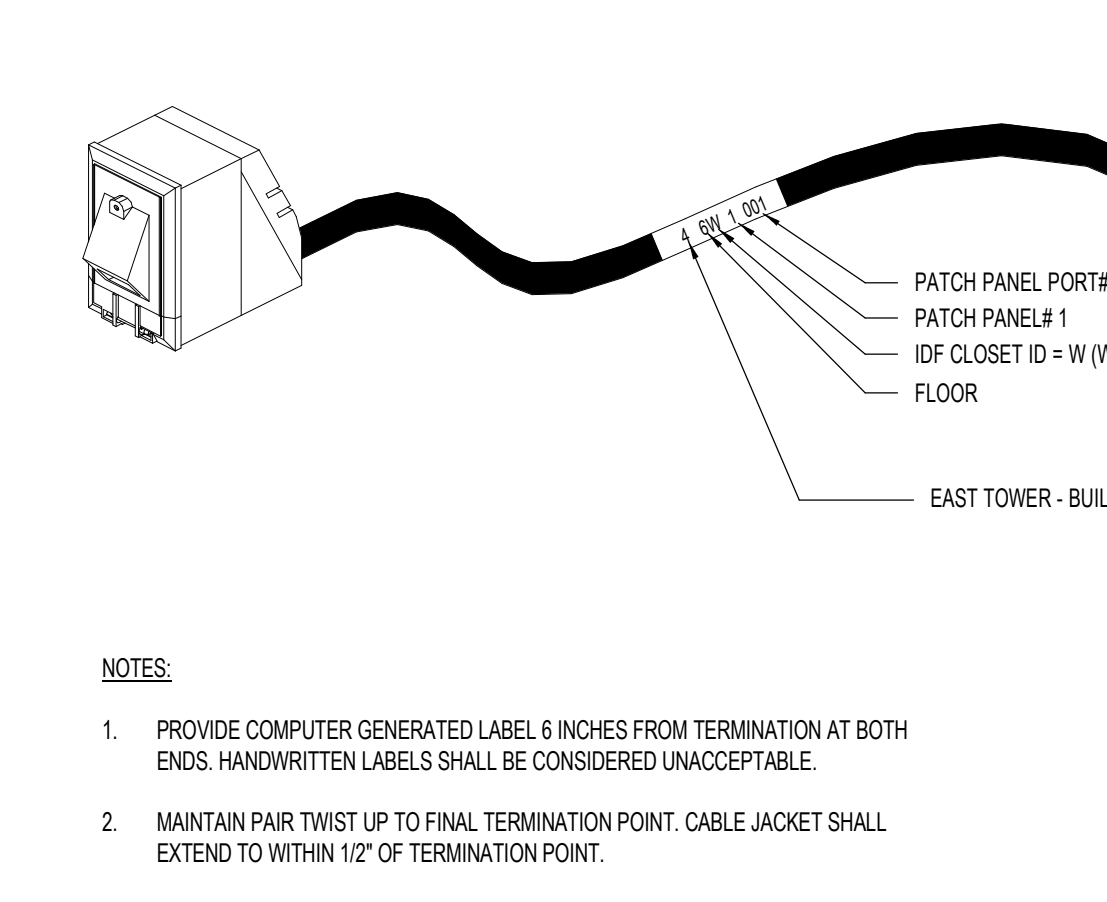
6 TYPICAL WAP, SENSOR OR SEC OUTLET DETAIL
SCALE: N.T.S.



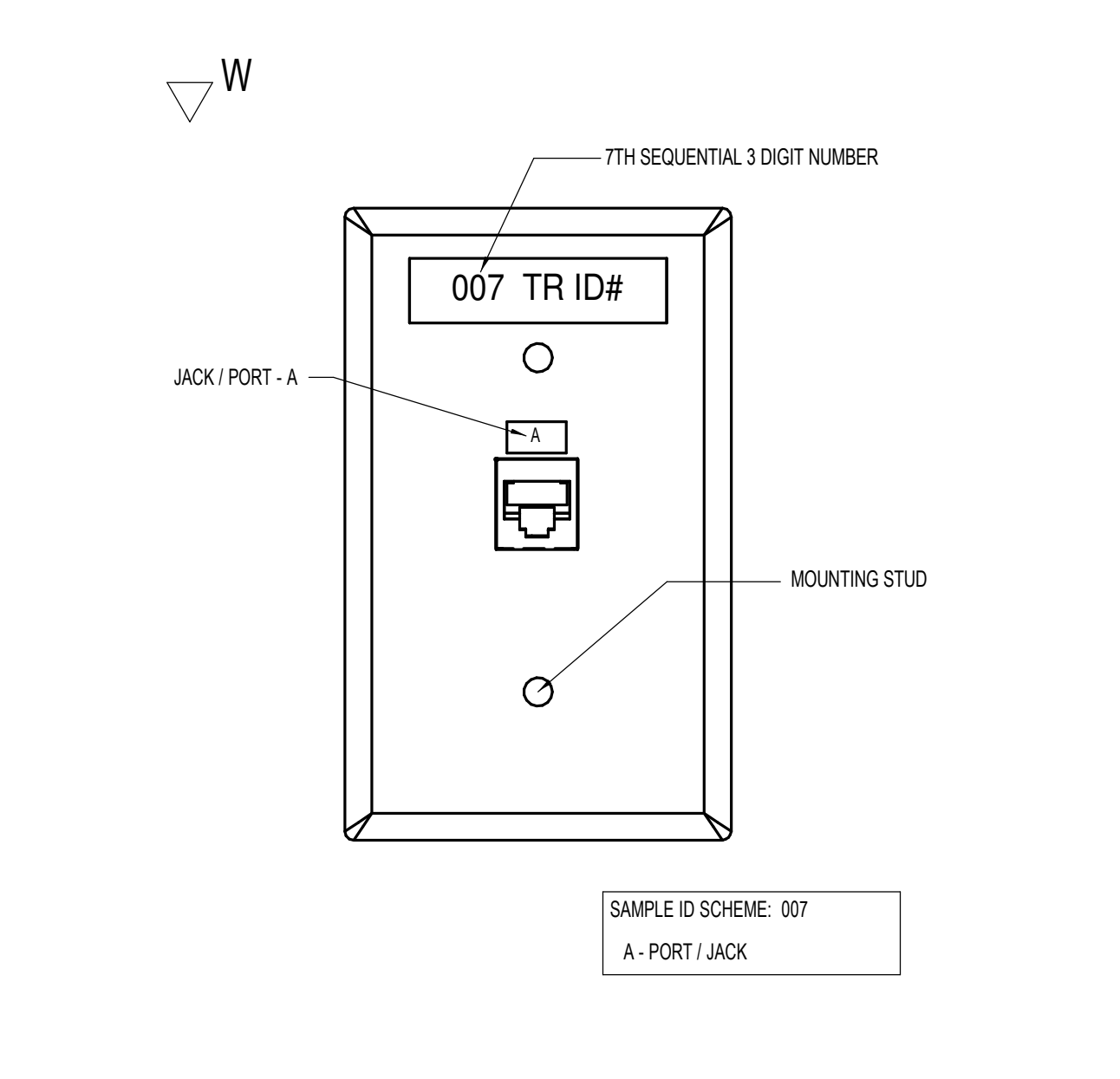
3 TV-COAX, UTP & 1/4" AUDIO "FACEPLATE" DETAIL
SCALE: N.T.S.



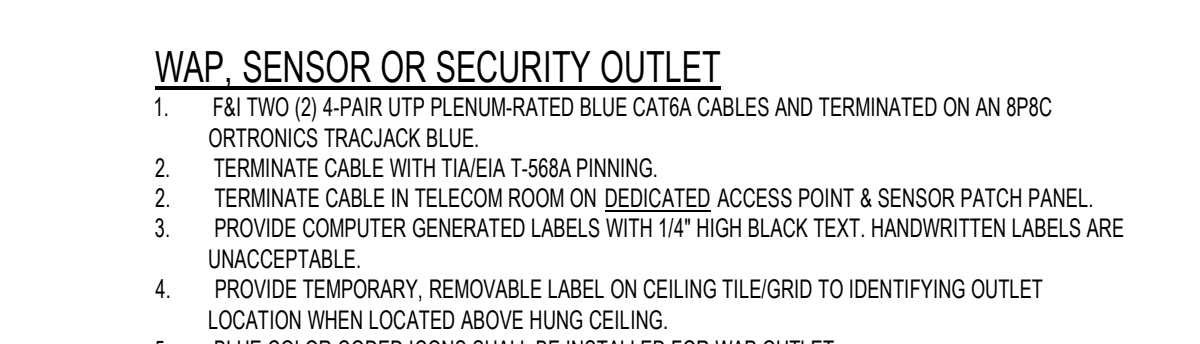
WAP, SENSOR OR SECURITY OUTLET
SCALE: N.T.S.



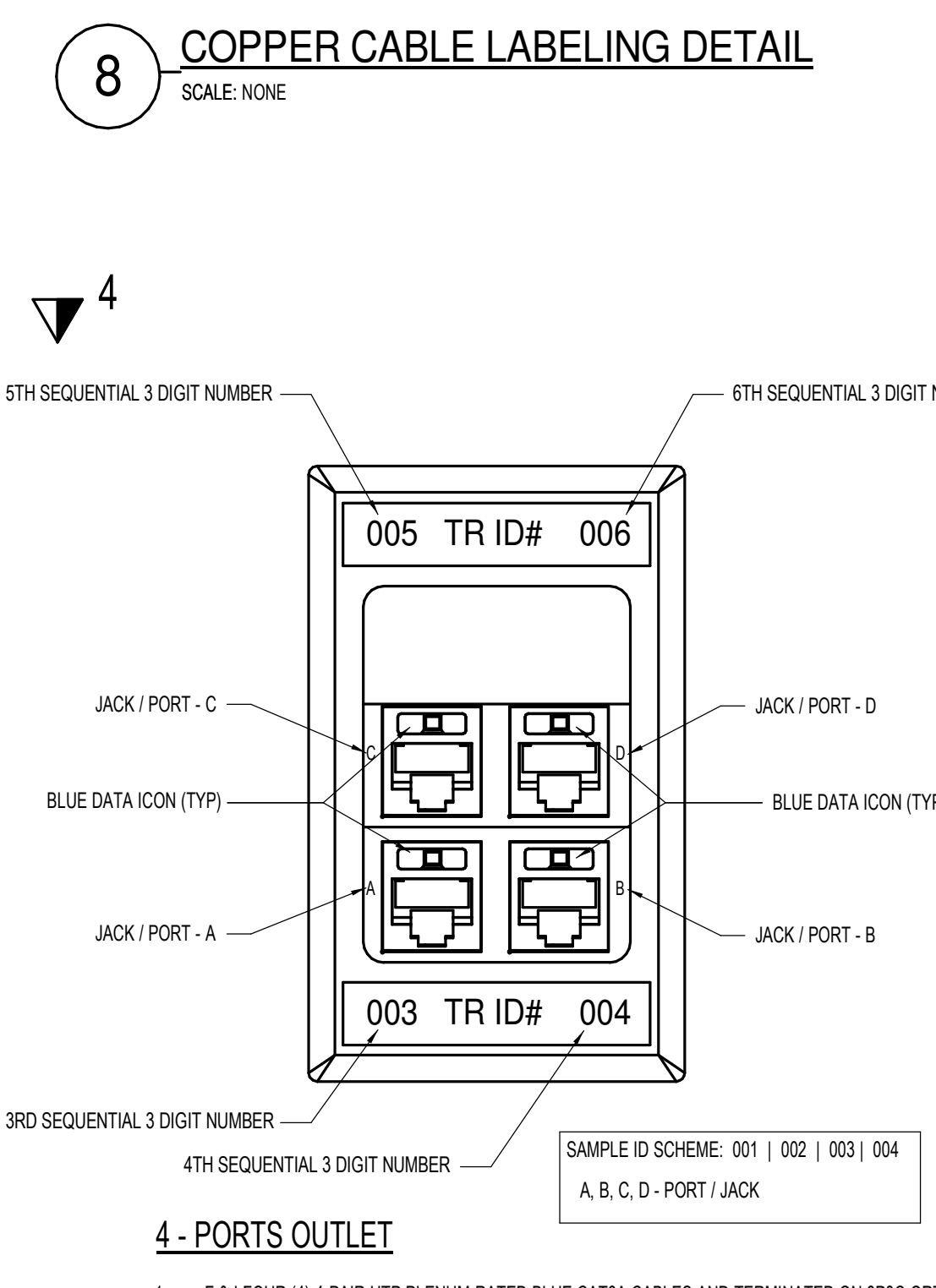
8 COPPER CABLE LABELING DETAIL
SCALE: NONE



5 WALL PHONE "FACEPLATE" DETAIL
SCALE: N.T.S.



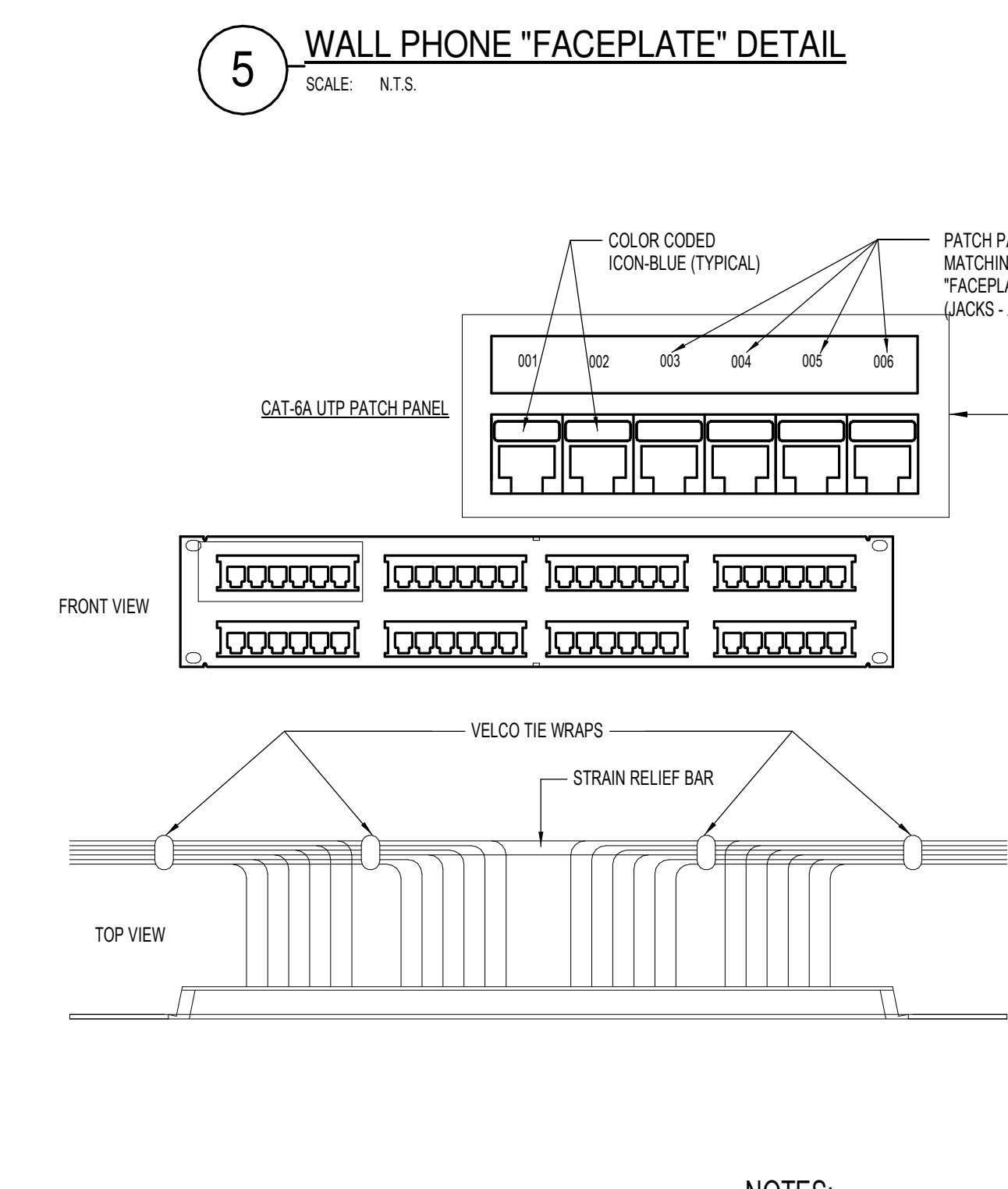
2 TELECOM OUTLET BOX DETAIL
SCALE: N.T.S.



4- PORTS OUTLET
SCALE: NONE

- F & T FOUR (4) 4-PAIR UTP PLENUM RATED BLUE CAT6A CABLES AND TERMINATED ON EPIC ORTRONICS TRACJACK BLUE JACKS FOR VOICE/DATA OUTLET.
- TERMINATE CABLES WITH TIA EIA T-568A PINNING.
- TERMINATE NEW CABLE IN TELECOM ROOM ON CAT 6A PATCH PANEL.
- PROVIDE COMPUTER GENERATED LABELS AS SHOWN IN BOTH WINDOWS. HANDWRITTEN LABELS ARE UNACCEPTABLE.
- BLUE COLOR CODED ICONS SHALL BE INSTALLED FOR VOICE/DATA OUTLET.

4- PORTS "FACEPLATE" DETAIL
SCALE: NONE

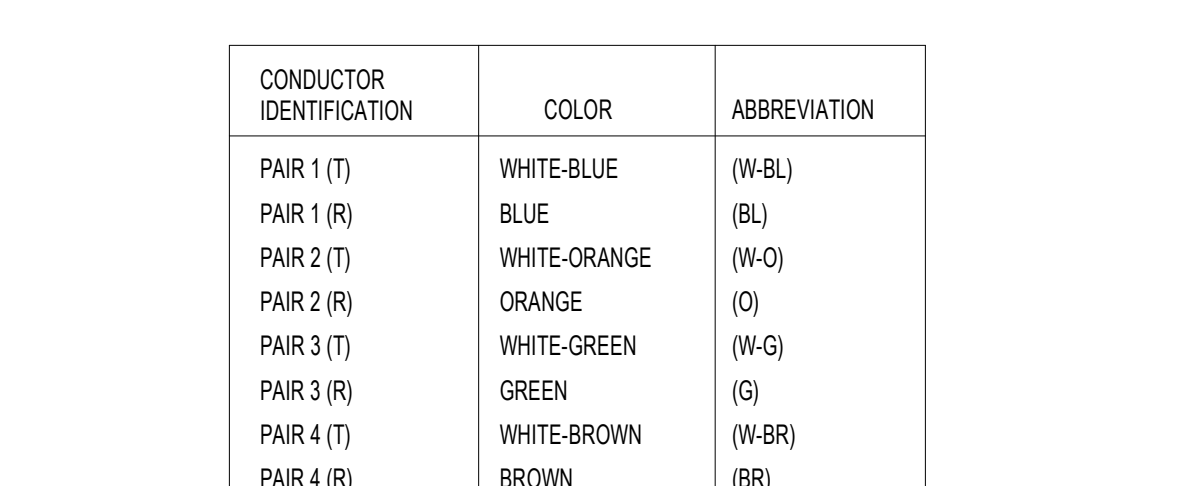


NOTES:

- UTILIZE ALL SUPPORT DEVICES PROVIDED WITH PATCH PANELS.
- UTILIZE VELCRO TIE WRAPS TO SECURE WIRING TO SUPPORT BAR. PLASTIC CABLE TIES WILL NOT BE ACCEPTED.
- INSTALL WHITE NUMBERED ICONS AS SHOWN ON PATCH PANEL. NUMBERED ICONS COINCIDE WITH ICONS ON FACEPLATES.
- NEW PATCH PANELS SHALL BE CATEGORY 6A WITH 8-PORTR MODULES.
- 'X' AND 'Y' JACKS SHALL HAVE BLUE DATA ICONS AT JACK/PORT "FACEPLATE" STATION AND ON THE TELECOM ROOM PATCH PANEL.

4 PATCH PANEL LABELLING & SUPPORT DETAIL
SCALE: N.T.S.

CONDUCTOR IDENTIFICATION	COLOR	ABBREVIATION
PAIR 1 (T)	WHITE-BLUE	(WB-L)
PAIR 1 (R)	BLUE	(BL)
PAIR 2 (T)	WHITE-ORANGE	(WO)
PAIR 2 (R)	ORANGE	(O)
PAIR 3 (T)	WHITE-GREEN	(WG)
PAIR 3 (R)	GREEN	(G)
PAIR 4 (T)	WHITE-BROWN	(WB-R)
PAIR 4 (R)	BROWN	(BR)



1 T-568A WIRING-PINNING DETAIL
SCALE: N.T.S.