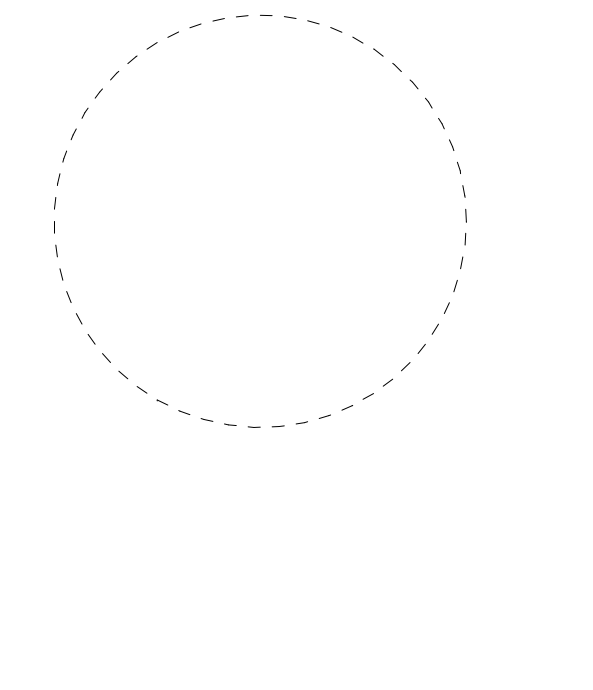


CONSULTANTS

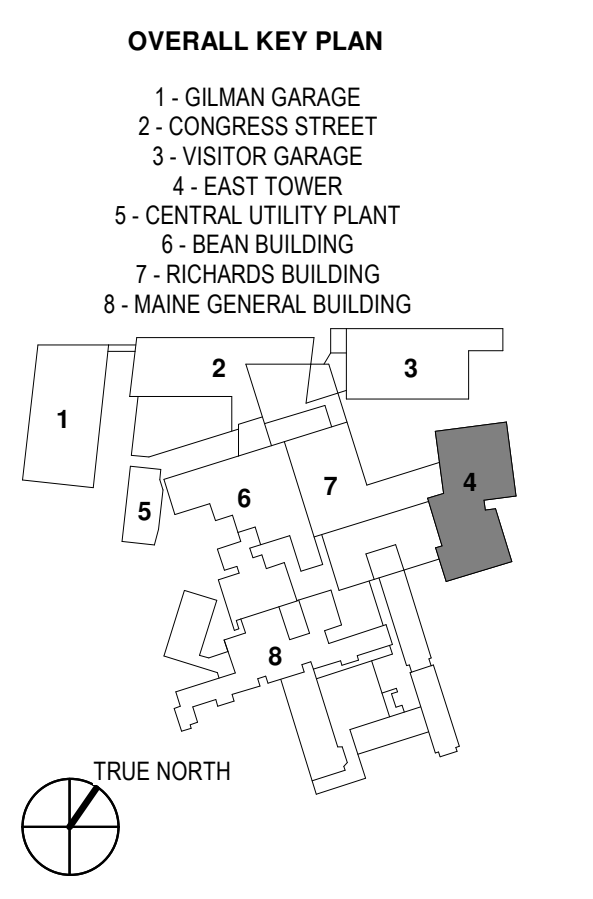
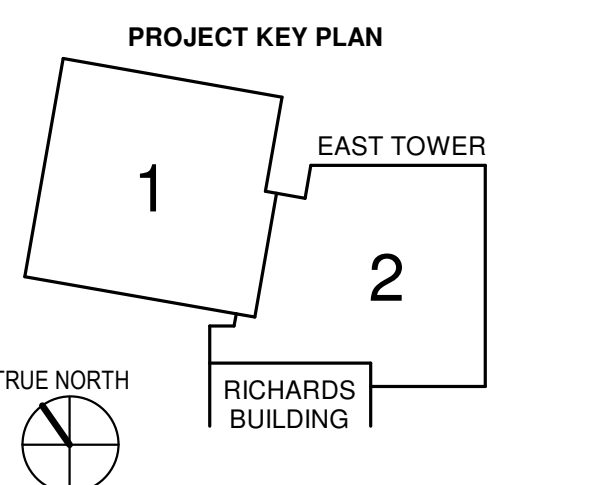
- CIVIL/LANDSCAPE ARCHITECT
Sebago Technics
75 John Roberts Road, Suite
1A, South Portland, ME 04106
- STRUCTURAL/ENR/BUILDING ENVELOPE CONSULTANT
Simpson Gumpertz & Heger Inc.
41 Seyon Street, Building 1, Suite 501,
Waltham, MA 02453
- MEPP ENGINEER/ CODE
AKF Group LLC
99 Bedford Street, 2nd Floor, Boston MA 02111
- CONSTRUCTION MANAGER
Turner Construction
2 Seaport Lane, Suite 200, Boston, MA 02210
- ELEVATOR CONSULTANT
VDA (Van Deusen & Associates)
101 Summer Street, 4th Floor, Boston MA
02110
- COST ESTIMATOR
D. G. Jones International
3 Baldwin Green Common, Suite 202, Woburn, MA 01801

PROJECT TITLE

**East Tower 6 & 7
Addition**
22 Bramhall Street
Portland, ME 04102



KEY PLANS



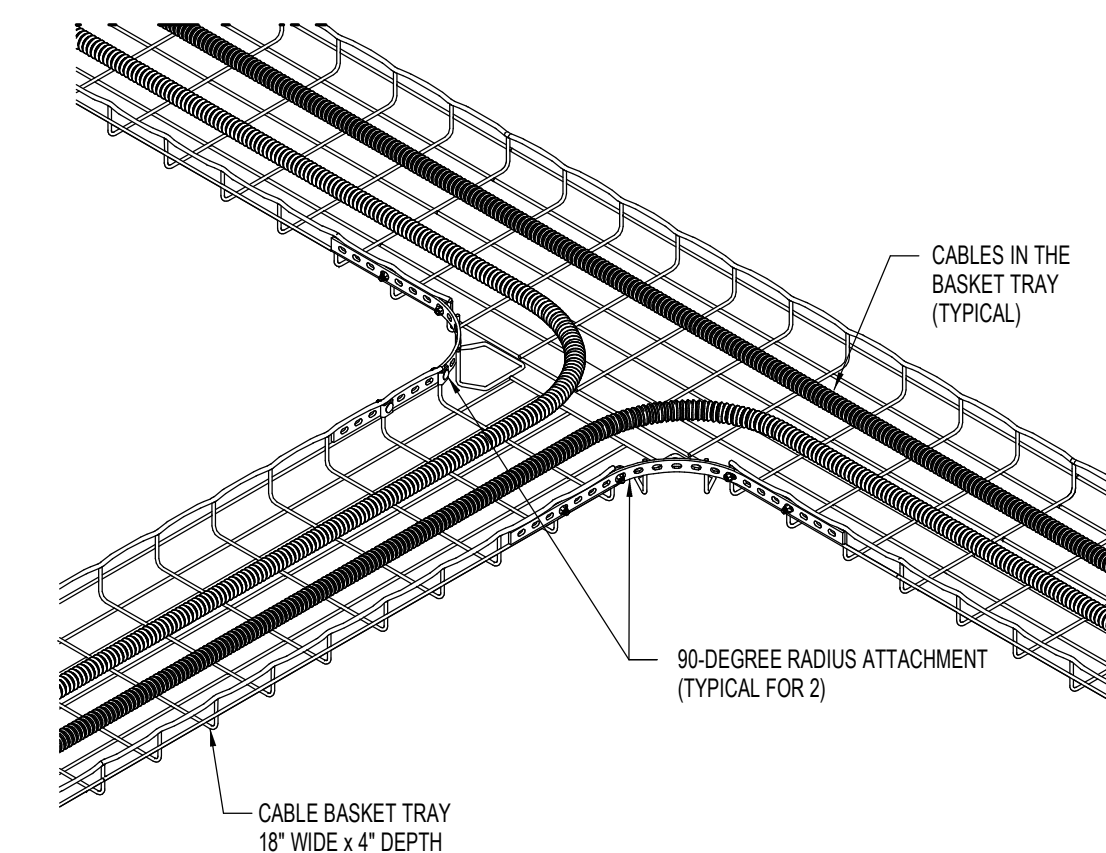
CONSTRUCTION DOCUMENTS
JANUARY 28, 2018

NO	ISSUE	DATE

Job Number: B150312-000
Drawn: EL
Checked: BN
Approved: BN

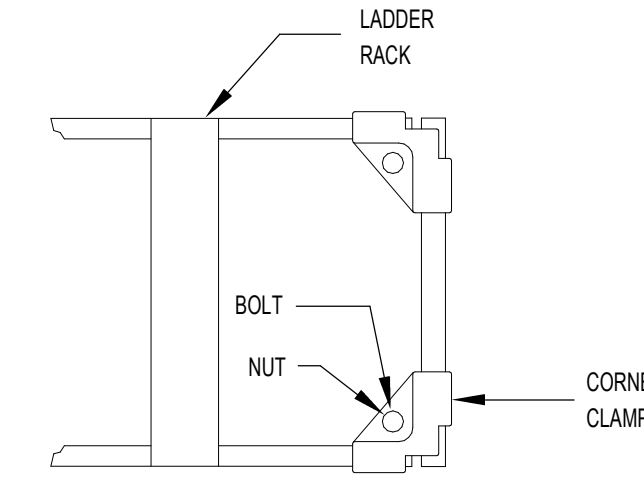
COMMUNICATIONS
DETAILS

SHEET NUMBER
T00-21

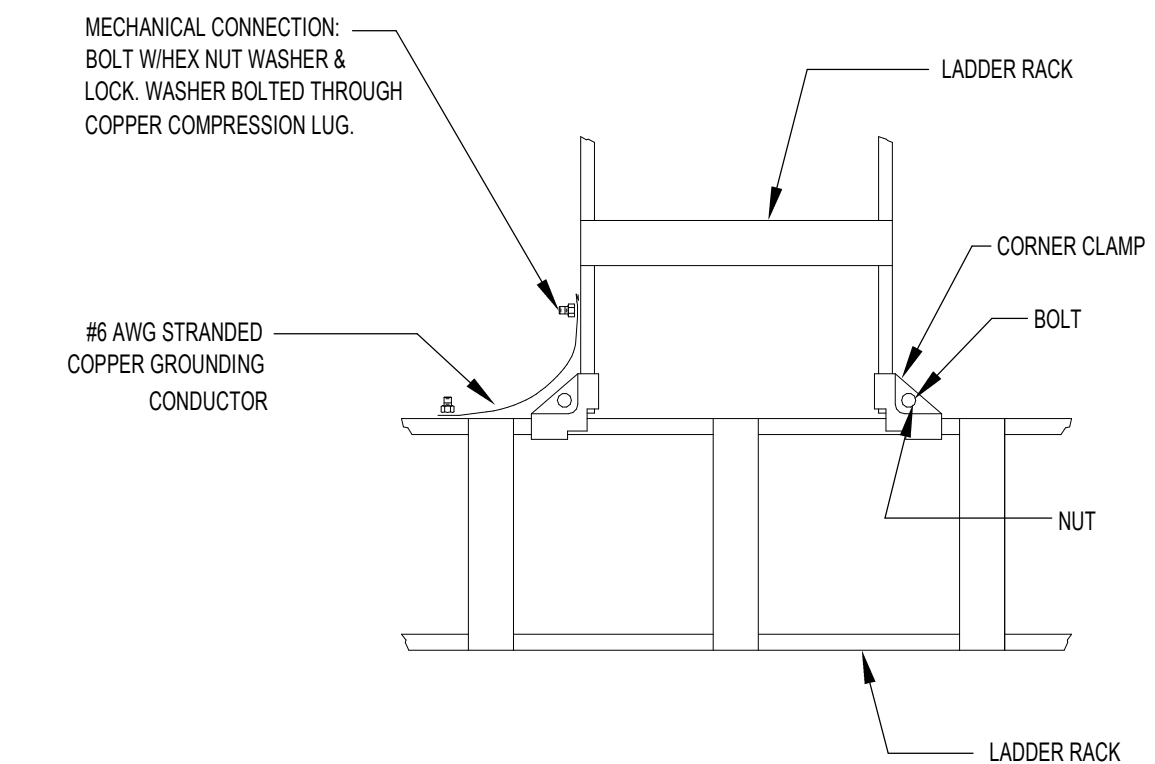


- NOTES:
1. PROVIDE TWO (2) 90-DEGREE RADIUS ATTACHMENTS AT ALL POINTS WHERE BASKET TRAY MEETS.
 2. PROVIDE ALL CLIPS, BOLTS, CONNECTORS, CAPS, ETC. AS REQUIRED FOR A COMPLETE INSTALLATION.
 3. ALL BASKET TRAY SHALL BE PROPERLY GROUNDED.
 4. ELECTRICIAN SHALL COORDINATE WITH MFG REPRESENTATIVE FOR BIDDING AND DURING INSTALLATION.

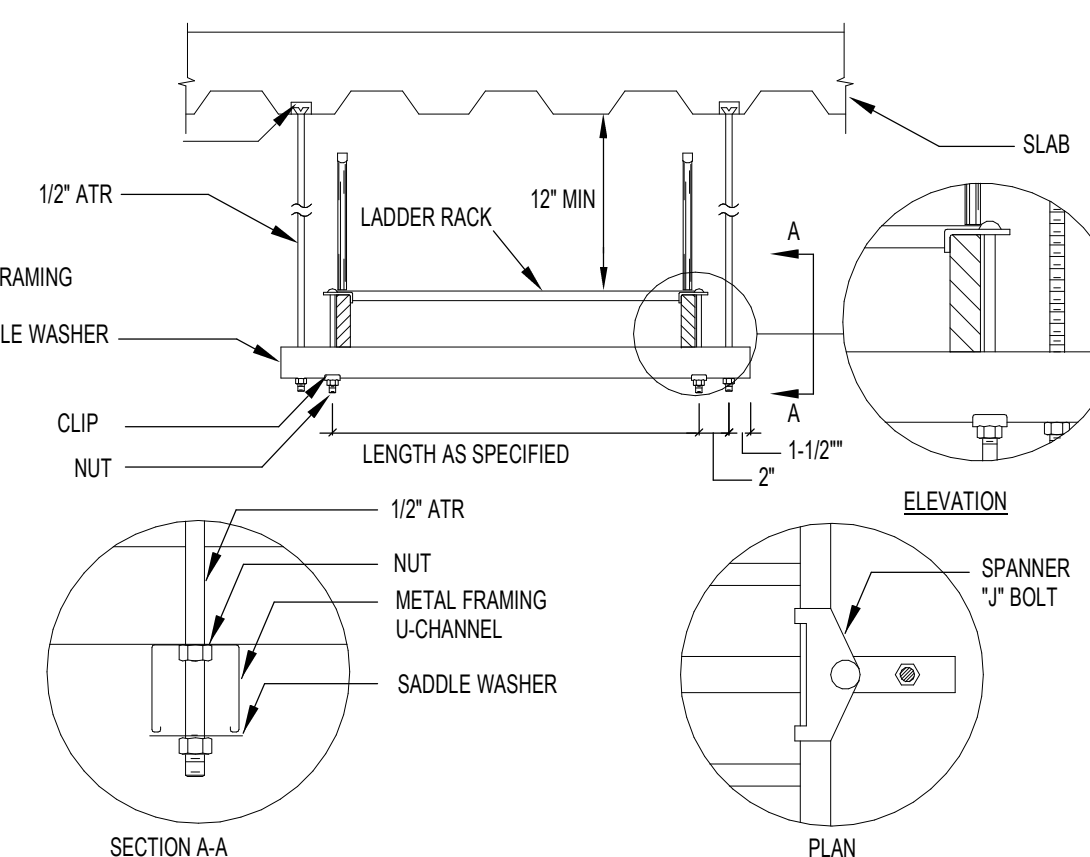
3 WIRE BASKET TRAY INTERSECTION
SCALE: NONE



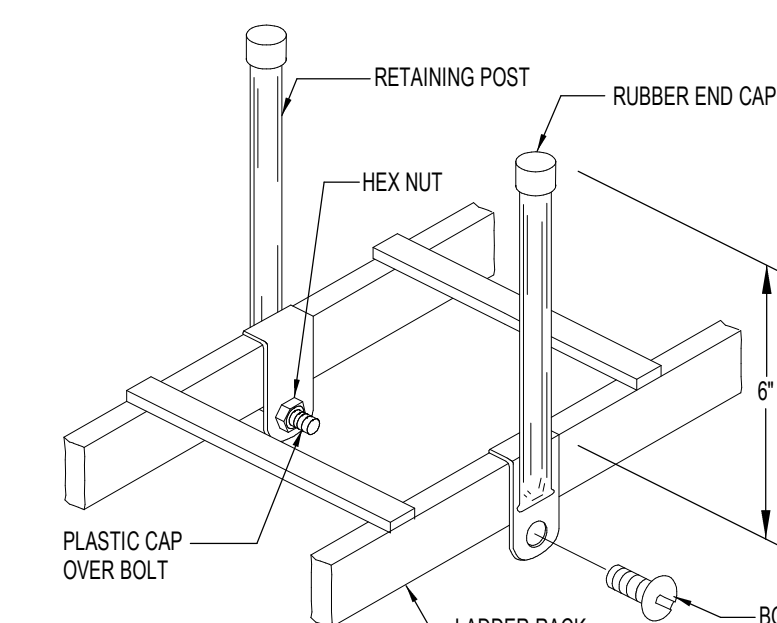
6 LADDER RACK TERMINATION DETAIL
SCALE: NONE



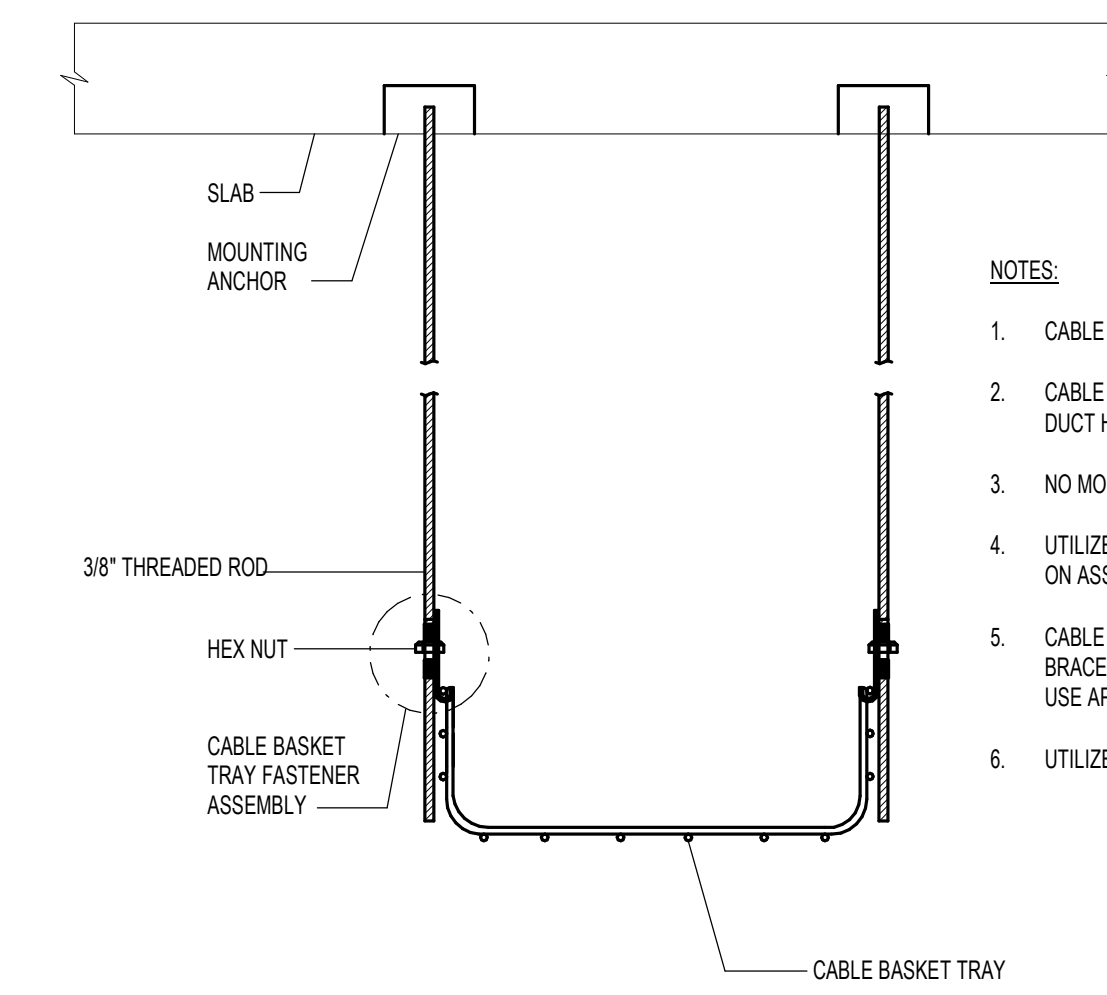
2 LADDER RACK T-SPLICE DETAIL
SCALE: N.T.S.



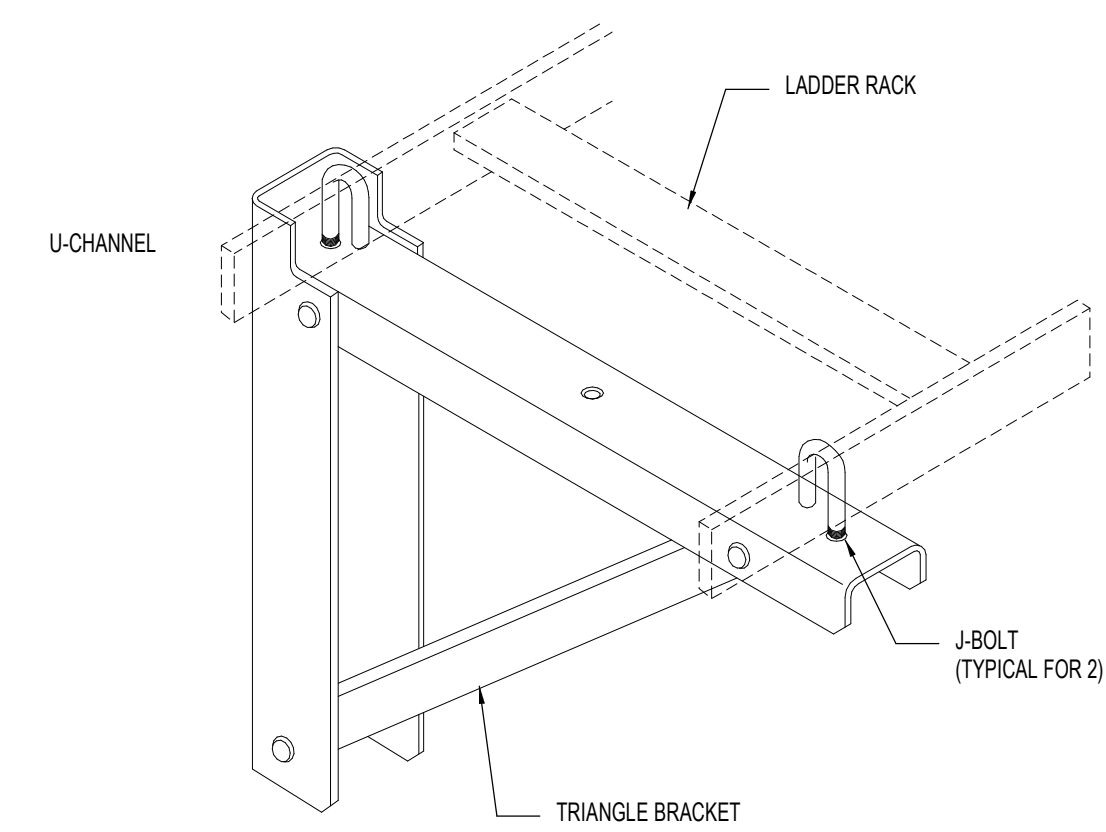
5 LADDER RACK HANGING DETAIL
SCALE: N.T.S.



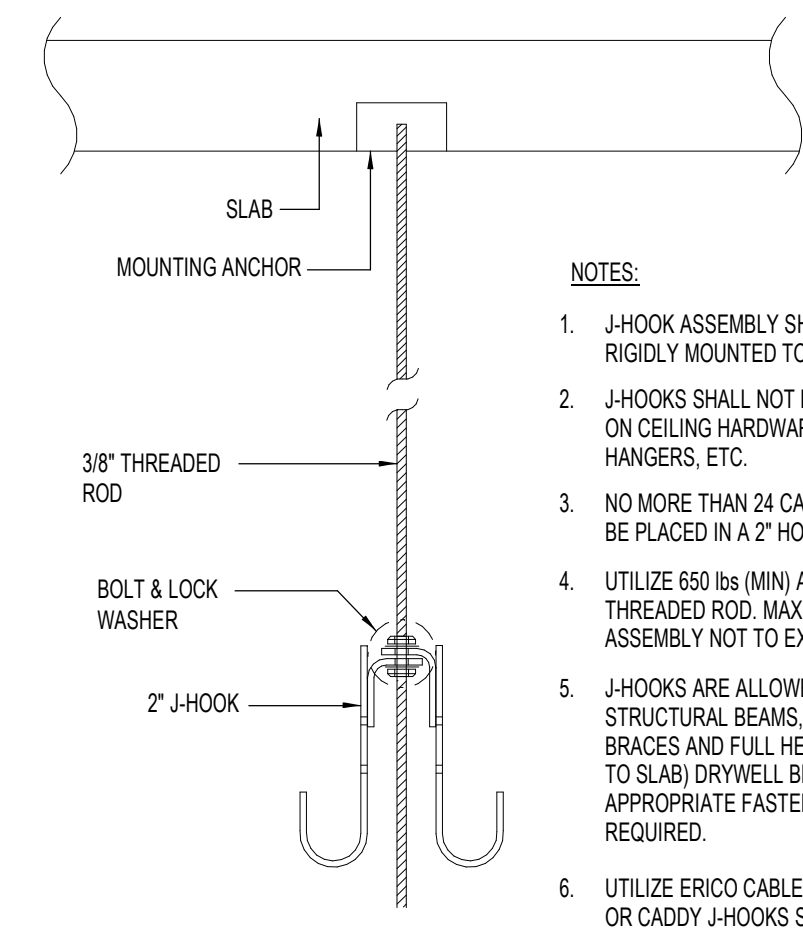
8 LADDER RACK RETAINING BAR DETAIL
SCALE: NONE



1 WIRE BASKET TRAY SUPPORT
SCALE: NONE



4 LADDER RACK TRIANGLE BRACKET DETAIL
SCALE: NONE



7 J-HOOK DETAIL (AS REQUIRED)
SCALE: NONE