

CONSULTANTS

CIVIL/LANDSCAPE ARCHITECT
Sabago Technics
75 John Roberts Road, Suite 100
14, South Portland, ME 04106

STRUCTURAL/ENR/BUILDING ENVELOPE CONSULTANT
Singapore Gumpertz & Hager Inc.
41 Seaver Street, Building 1, Suite 570
Waltham, MA 02453

MEP/ELECTRICAL ENGINEER
AKF Group LLC
99 Bedford Street, 2nd Floor, Boston MA 02111

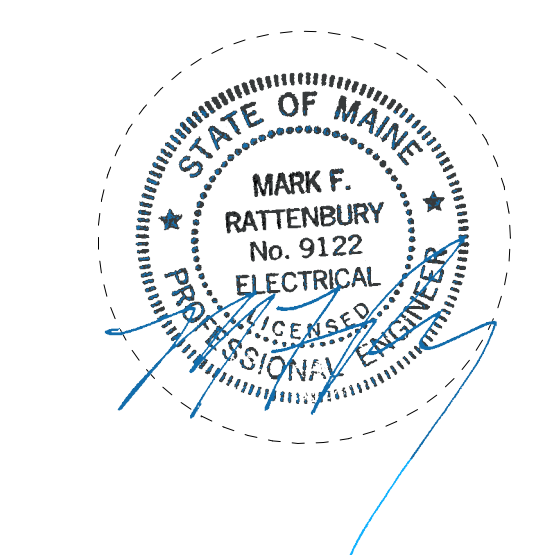
CONSTRUCTION MANAGER
Turner Construction
2 Seaport Lane, Suite 200, Boston, MA 02210

ELEVATOR CONSULTANT
VDA (Van Deusen & Associates)
101 Summer Street, 4th Floor, Boston MA 02110

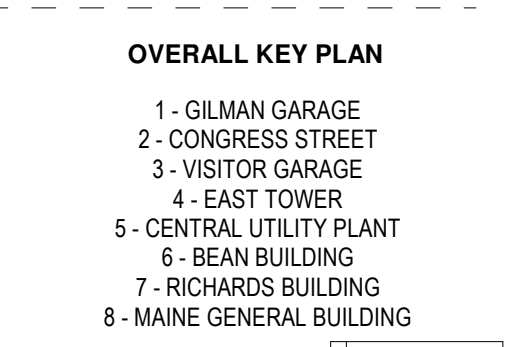
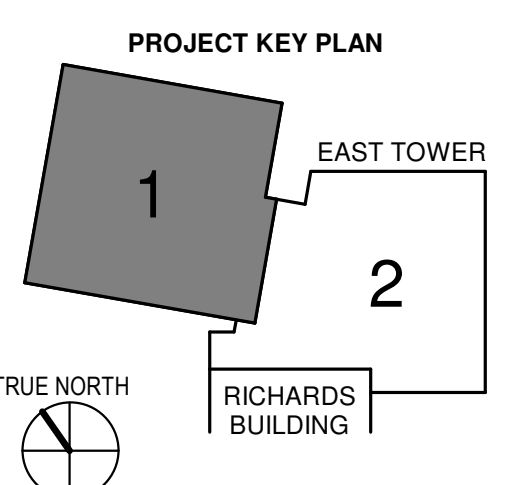
COST ESTIMATOR
D. G. Jones International
3 Baldwin Green Common, Suite 202, Woburn, MA 01801

PROJECT TITLE

**East Tower 6 & 7
Addition**
22 Bramhall Street
Portland, ME 04102



KEY PLANS



CONSTRUCTION DOCUMENTS
JANUARY 28, 2018

ADDENDUM NO.	DATE
1	03/22/18

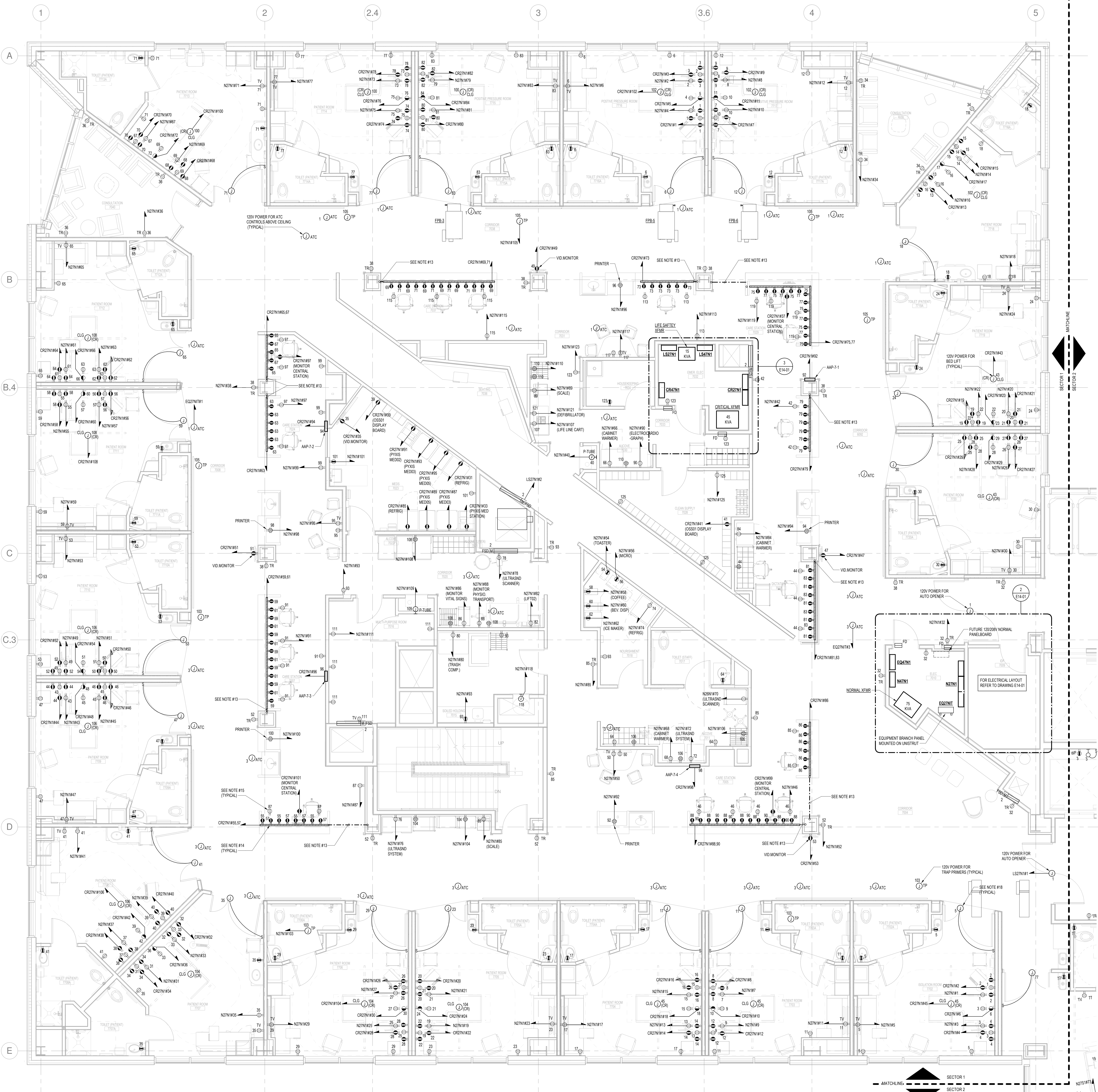
NO.	ISSUE	DATE
1	ISSUE	DATE

Job Number: B150312-000
Drawn: MMS
Checked: MFR
Approved: MFR

TITLE
**ELECTRICAL
SEVENTH FLOOR
POWER PLAN -
SECTOR 1**
SHEET NUMBER

E11-71

- DRAWING NOTES - SEVENTH FLOOR:**
- REFER TO DRAWING E00-01 FOR ELECTRICAL SYMBOLS, NOTES AND ABBREVIATIONS.
 - REFER TO DRAWING E00-01 FOR POWER RISER DIAGRAM.
 - REFER TO DRAWINGS E00-11 AND E00-12 FOR ELECTRICAL AND MECHANICAL EQUIPMENT SCHEDULES.
 - REFER TO ARCHITECTURAL FLOOR PLANS AND ELEVATIONS FOR EXACT LOCATIONS, MOUNTING HEIGHTS AND QUANTITIES OF RECEPTACLES AND POWER DEVICES PRIOR TO INSTALLATION.
 - ALL 120V AND 208V POWER DEVICES SHALL BE CIRCUITED TO 120/208V PANELBOARDS AS INDICATED ON THE FLOOR PLANS.
 - COORDINATE EXACT LOCATION OF ALL MECHANICAL AND PLUMBING EQUIPMENT WITH MECHANICAL AND PLUMBING DRAWINGS.
 - ALL BRANCH CIRCUITS IN EXCESS OF 100' ARE TO USE #14MWG CONDUCTORS.
 - ALL RECEPTACLES SHALL BE LISTED AS HOSPITAL GRADE.
 - ALL RECEPTACLES AND COVER PLATES CIRCUITED TO THE CRITICAL BRANCH PANELS SHALL BE RED IN COLOR.
 - REFER TO I-SERIES AND SC-SERIES DRAWINGS FOR ALL INFRASTRUCTURE CONDUIT REQUIRED FOR TELEPHONE, DATA, SECURITY AND AUDIO VISUAL.
 - NUMERICAL ADJACENT TO THE DEVICES DENOTES CIRCUIT NUMBER. MINIMUM BRANCH CIRCUIT WIRING TO BE 3/12, 1/12 GROUND INSTALLED CONCEALED. REFER TO ELECTRICAL SPECIFICATIONS FOR WIRING METHODS.
 - WIRING METHODS WITHIN PATIENT CARE SPACES SHALL BE:
- NORMAL BRANCH - HOSPITAL GRADE AC CABLE
- ESSENTIAL BRANCH - SINGLE CONDUCTORS IN EMT
 - PROVIDE (1) 1/2" FOR POWER, (1) 1-1/2" FOR TEL/DATA AND (1) 1" FOR RISE CALL TO RUN IN THE SLAB AND STUB UP INTO THE RISE STATION BASE AND UP INTO WIREMOLD RACKWAY. COORDINATE EXACT LOCATION IN THE FIELD PRIOR TO INSTALLATION.
 - WIREMOLD 4000 SERIES DUAL CHANNEL, STEEL RACEWAY RACKWAY TO BE MOUNTED UNDERNEATH DESK TOP OF NURSES STATIONS. COORDINATE EXACT MOUNTING HEIGHT WITH ARCHITECT PRIOR TO INSTALLATION. RECEPTACLE DEVICES TO BE INSTALLED TOP ON CENTER AND BE HOSPITAL GRADE TYPE DEVICES. COORDINATE WITH TEL/DATA DRAWINGS FOR QUANTITY AND SPACING OF TEL/DATA DEVICES.
 - NORMAL BRANCH DUPLEX RECEPTACLE AT NURSES STATION TO BE MOUNTED ABOVE TABLE TOP IN BACKDROP. COORDINATE EXACT MOUNTING HEIGHT WITH ARCHITECT PRIOR TO INSTALLATION.
 - WIREMOLD EVOLUTION HAT SERIES POKE THRU DEVICE FOR POWER, TEL/DATA AND AV. PROVIDE (2) 2/0A DUPLEX RECEPTACLES FOR POWER AND COORDINATE WITH TEL/DATA AND AV DRAWINGS FOR ADDITIONAL DEVICE REQUIREMENTS.
 - PROVIDE (1) 3/4" FOR POWER, (1) 1-1/2" FOR TEL/DATA AND (1) 1-1/2" FOR AV TO RUN IN THE CEILING OF THE FLOOR BELOW.
 - ALTERNATE #8B - PROVIDE 120V POWER ABOVE CEILING FOR GLUCON DOOR SWITCHABLE GLASS SWITCH SHALL BE LOCATED IN SAME LOCATION AS MAIN LIGHTING CONTROLS FOR EACH PATIENT ROOM.



LEVEL 7 - SECTOR 1
SCALE: 1/4" = 1'-0"

3/23/2018 11:08:31 AM C:\Revit Local Files_B150312-000\MAC East Tower 6&7 MEP17_Conform_construction.rvt