

CONSULTANTS

CIVIL/LANDSCAPE ARCHITECT

Sebago Technics
 75 John Roberts Road, Suite
 1A, South Portland, ME 04106

STRUCTURAL/ENG. BUILDING ENVELOPE CONSULTANT

Singapore Gumpertz & Hager Inc.
 41 Seaver Street, Building 1, Suite 570,
 Waltham, MA 02453

MEP/ELECTRICAL ENGINEER

AKF Group LLC
 99 Bedford Street, 2nd Floor, Boston MA 02111

CONSTRUCTION MANAGER

Turner Construction
 2 Seaport Lane, Suite 200, Boston, MA 02210

ELEVATOR CONSULTANT

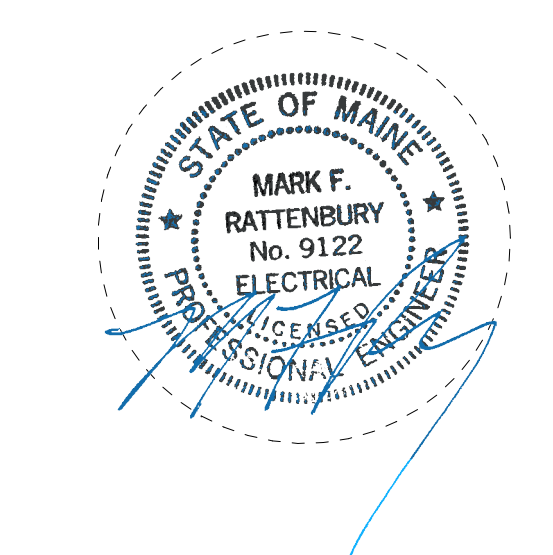
VDA (Van Deusen & Associates)
 101 Summer Street, 4th Floor, Boston MA
 02110

COST ESTIMATOR

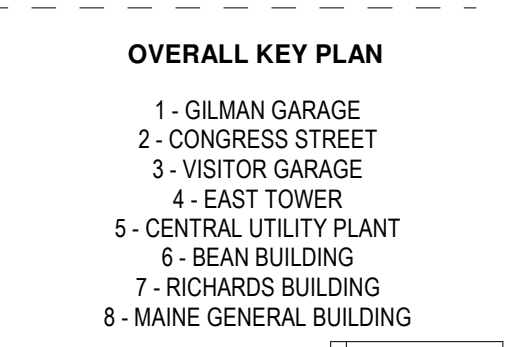
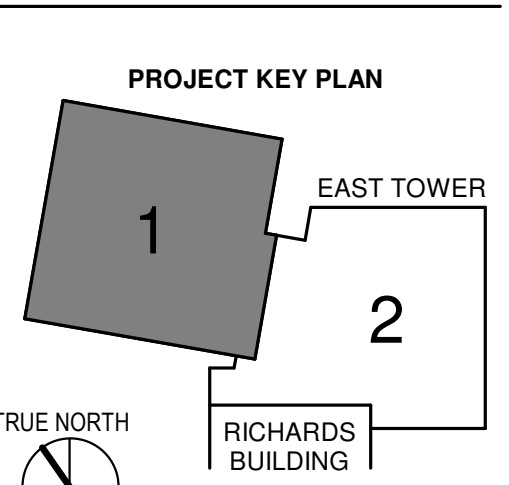
D. G. Jones International
 3 Baldwin Green Common, Suite 202, Woburn, MA 01801

PROJECT TITLE

**East Tower 6 & 7
 Addition**
 22 Bramhall Street
 Portland, ME 04102



KEY PLANS



CONSTRUCTION DOCUMENTS
 JANUARY 28, 2018

ADDENDUM NO.	DATE
1	03/22/18

NO.	ISSUE	DATE
Job Number	B150312-000	
Drawn	MAG	
Checked	MFR	
Approved	MFR	

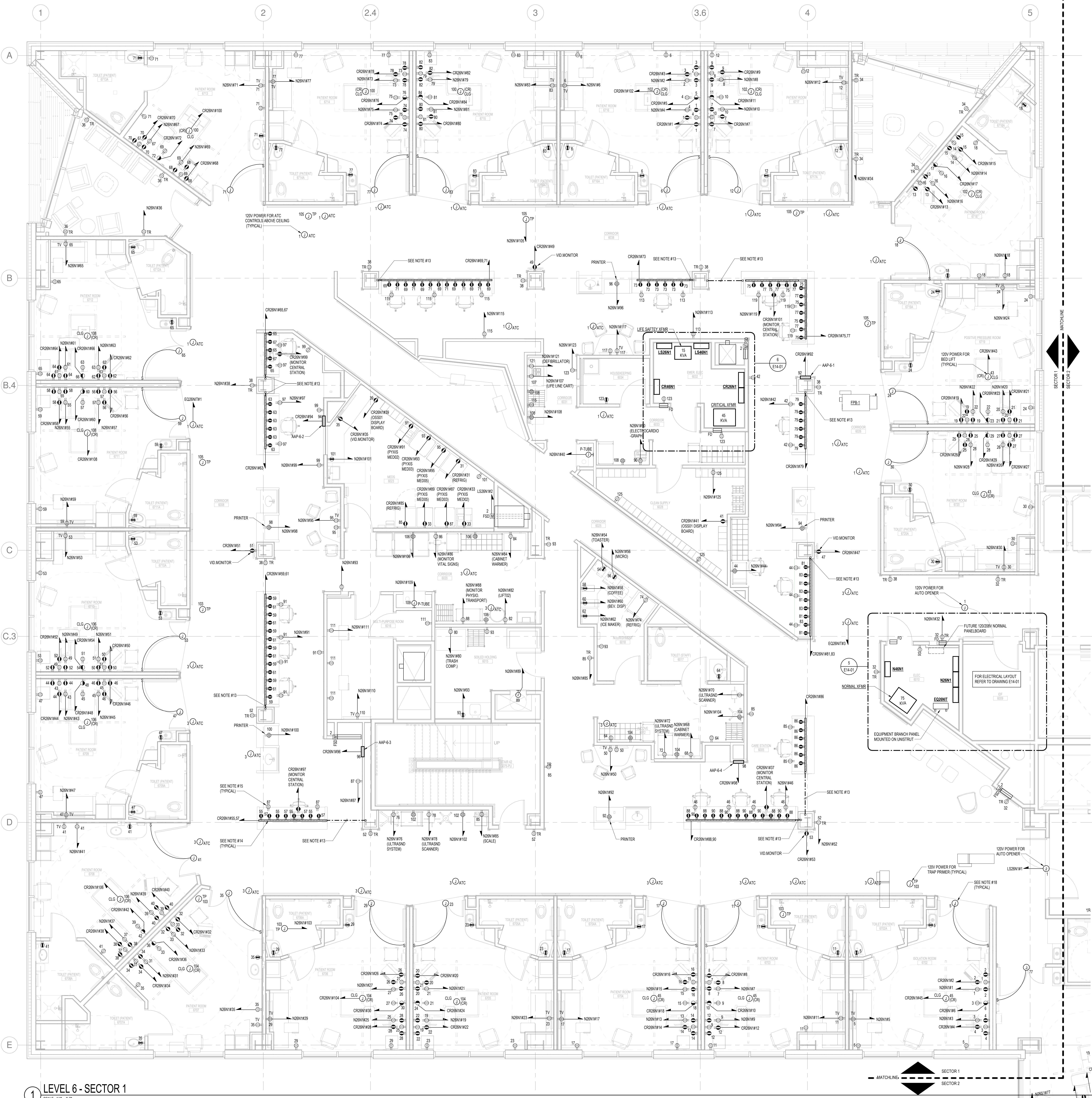
TITLE
**ELECTRICAL SIXTH
 FLOOR POWER
 PLAN - SECTOR 1**

SHEET NUMBER

E11-61

Copyright 2017 © Perkins+Will

- DRAWING NOTES - SIXTH FLOOR:**
- REFER TO DRAWING E00-01 FOR ELECTRICAL SYMBOLS, NOTES AND ABBREVIATIONS.
 - REFER TO DRAWING E00-01 FOR POWER RISER DIAGRAM.
 - REFER TO DRAWINGS E00-11 AND E00-12 FOR ELECTRICAL AND MECHANICAL EQUIPMENT SCHEDULES.
 - REFER TO ARCHITECTURAL FLOOR PLANS AND ELEVATIONS FOR EXACT LOCATIONS, MOUNTING HEIGHTS AND QUANTITIES OF RECEPTACLES AND POWER DEVICES PRIOR TO INSTALLATION.
 - ALL 120V AND 200V POWER DEVICES SHALL BE CIRCUITED TO 100AMP PANELBOARDS AS INDICATED ON THE FLOOR PLANS.
 - COORDINATE EXACT LOCATION OF ALL MECHANICAL AND PLUMBING EQUIPMENT WITH MECHANICAL AND PLUMBING DRAWINGS.
 - ALL BRANCH CIRCUITS IN EXCESS OF 100' ARE TO USE #14AWG CONDUCTORS.
 - ALL RECEPTACLES SHALL BE LISTED AS HOSPITAL GRADE.
 - ALL RECEPTACLES AND COVER PLATES CIRCUITED TO THE CRITICAL BRANCH PANELS SHALL BE RED IN COLOR.
 - REFER TO I-SERIES AND SC-SERIES DRAWINGS FOR ALL INFRASTRUCTURE CONDUIT REQUIRED FOR TELEPHONE, DATA, SECURITY AND AUDIO VISUAL.
 - NUMERICAL ADJACENT TO THE DEVICES DENOTES CIRCUIT NUMBER. MINIMUM BRANCH CIRCUIT WIRING TO BE 3#12, 1#12 GROUND INSTALLED CONCEALED. REFER TO ELECTRICAL SPECIFICATIONS FOR WIRING METHODS.
 - WIRING METHODS WITHIN PATIENT CARE SPACES SHALL BE:
 - NORMAL BRANCH - HOSPITAL GRADE AC CABLE
 - ESSENTIAL BRANCH - SINGLE CONDUCTORS IN EMT
 - PROVIDE (1) 1" FC FOR POWER, (1) 1-1/2" FC FOR TEL/DATA AND (1) 1" FC FOR RAINSEAL TO RUN IN THE SLAB AND STUB UP INTO THE NURSE STATION BASE AND UP INTO WIREMOULD RACKWAY. COORDINATE EXACT LOCATION IN THE FIELD PRIOR TO INSTALLATION.
 - WIREMOULD 4000 SERIES DUAL CHANNEL, STEEL RACKWAY RACKWAY TO BE MOUNTED UNDERNEATH DESK TOP OF NURSES STATIONS. COORDINATE EXACT MOUNTING HEIGHT WITH ARCHITECT PRIOR TO INSTALLATION. RECEPTACLE DEVICES TO BE INSTALLED 1" ON CENTER AND BE HOSPITAL GRADE TYPE DEVICES. COORDINATE WITH TEL/DATA DRAWINGS FOR QUANTITY AND SPACING OF TEL/DATA DEVICES.
 - NORMAL BRANCH DUPLEX RECEPTACLE AT NURSES STATION TO BE MOUNTED ABOVE TABLE TOP IN BACKDISH. COORDINATE EXACT MOUNTING HEIGHT WITH ARCHITECT PRIOR TO INSTALLATION.
 - WIREMOULD EVOLUTION FAT SERIES POKER THRU DEVICE FOR POWER, TEL/DATA AND AV. PROVIDE (2) 2#14 DUPLEX RECEPTACLES FOR POWER AND COORDINATE WITH TEL/DATA AND AV DRAWINGS FOR ADDITIONAL DEVICE REQUIREMENTS.
 - PROVIDE (1) 3/4" FC FOR POWER, (1) 1-1/2" FC FOR TEL/DATA AND (1) 1-1/2" FC FOR AV TO RUN IN THE CEILING OF THE FLOOR BELOW.
 - ALTERNATE #6B - PROVIDE 120V POWER ABOVE CEILING FOR QUICUOOR SHIFTABLE GLASS SWITCH SHALL BE LOCATED IN SAME LOCATION AS MAIN LIGHTING CONTROLS FOR EACH PATIENT ROOM.



LEVEL 6 - SECTOR 1
 SCALE: 1/8" = 1'-0"

3/29/2018 11:07:13 AM
 C:\Revit Local Files_LB15012\000\MAC East Tower 6&7 MEP17_Conform_construction.rvt