

CONSULTANTS

CIVIL / LANDSCAPE ARCHITECT
Sebago Technics
75 John Roberts Road, Suite
1A, South Portland, ME 04106

STRUCTURAL ENGINEER / BUILDING ENVELOPE CONSULTANT
Simpson Gumpertz & Heger Inc.
41 Seay Street, Building 1, Suite 570
Waltham, MA 02453

MERFP ENGINEER / CODE
AKF Group LLC
99 Bedford Street, 2nd Floor, Boston MA 02111

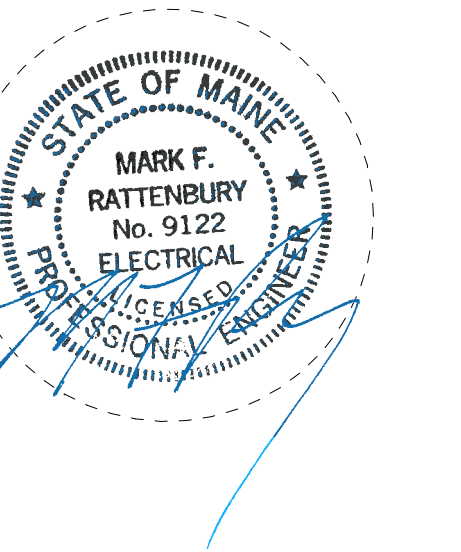
CONSTRUCTION MANAGER
Turner Construction
2 Seaport Lane, Suite 200, Boston, MA 02210

ELEVATOR CONSULTANT
VDA (Van Deusen & Associates)
101 Summer Street, 4th Floor, Boston MA
02110

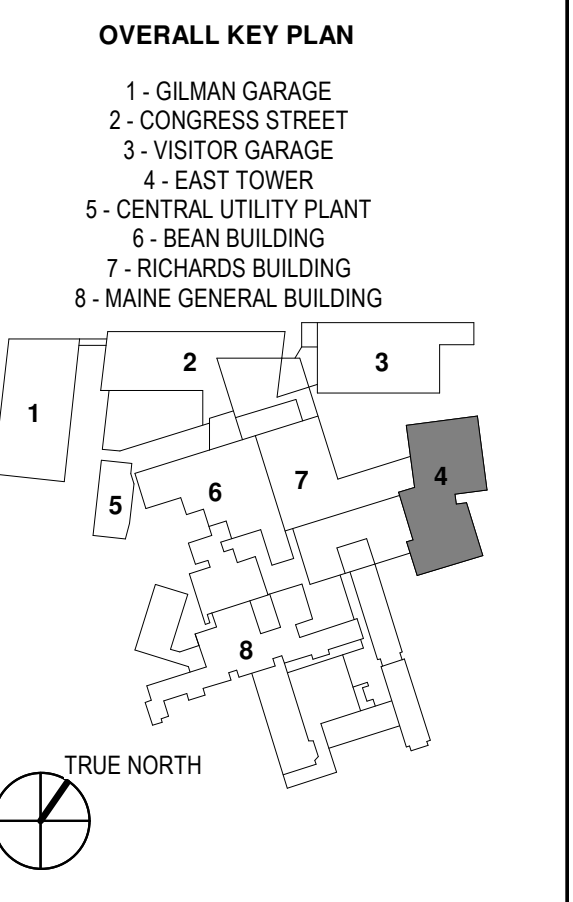
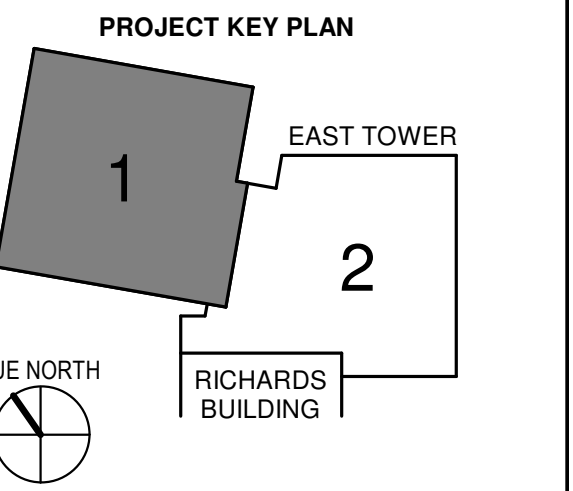
COST ESTIMATOR
D. G. Jones International
3 Baldwin Green Common, Suite 202, Woburn, MA 01801

PROJECT TITLE

**East Tower 6 & 7
Addition**
22 Bramhall Street
Portland, ME 04102



KEY PLANS



CONSTRUCTION DOCUMENTS
JANUARY 28, 2018

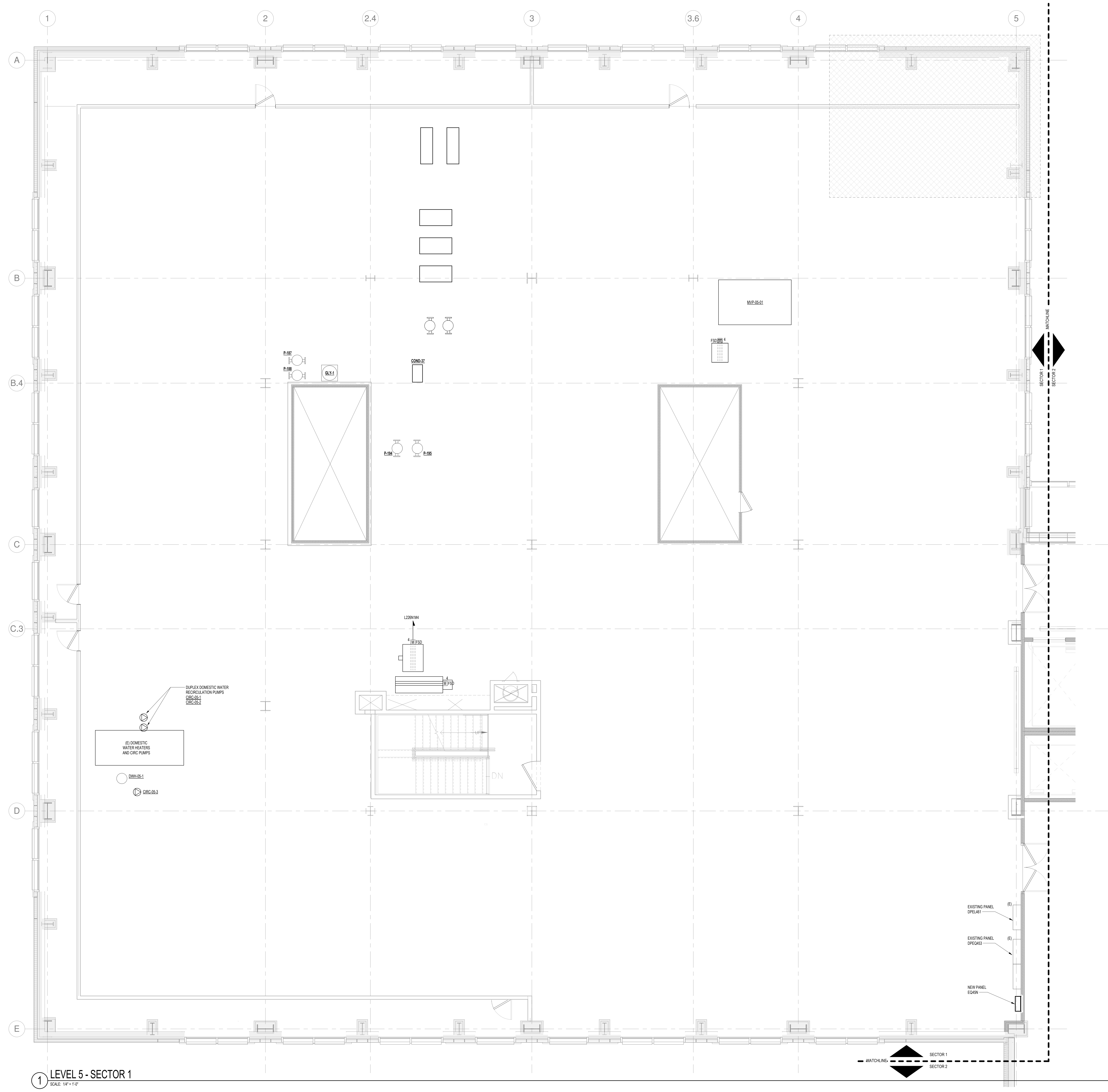
NO	ISSUE	DATE
1	ADDENDUM NO. 1	03/22/18

Job Number: B150312-000
Drawn: MAS
Checked: MFR
Approved: MFR

TITLE
**ELECTRICAL FIFTH
FLOOR POWER
PLAN - SECTOR 1**

SHEET NUMBER
E11-51

- DRAWING NOTES - FIFTH FLOOR:**
- REFER TO DRAWING E00-01 FOR ELECTRICAL SYMBOLS, NOTES AND ABBREVIATIONS.
 - REFER TO DRAWINGS E00-01 FOR POWER RISER DIAGRAM.
 - REFER TO DRAWINGS E00-11 AND E00-12 FOR ELECTRICAL AND MECHANICAL EQUIPMENT SCHEDULES.
 - REFER TO ARCHITECTURAL FLOOR PLANS AND ELEVATIONS FOR EXACT LOCATIONS, MOUNTING HEIGHTS AND QUANTITIES OF RECEPTACLES AND POWER DEVICES PRIOR TO INSTALLATION ON THE FLOOR PLANS.
 - ALL 120V AND 208V POWER DEVICES SHALL BE CIRCUITED TO 150/208V PANELBOARDS AS INDICATED ON THE FLOOR PLANS.
 - COORDINATE EXACT LOCATION OF ALL MECHANICAL AND PLUMBING EQUIPMENT WITH MECHANICAL AND PLUMBING DRAWINGS.
 - ALL BRANCH CIRCUITS IN EXCESS OF 100' ARE TO UTILIZE #10AWG CONDUCTORS.
 - REFER TO T-SERIES AND SC-SERIES DRAWINGS FOR ALL INFRASTRUCTURE CONDUIT REQUIRED FOR TELEPHONE, DATA, SECURITY AND AUDIO VISUAL.
 - NUMERAL ADJACENT TO THE DEVICES DENOTES CIRCUIT NUMBER. MINIMUM BRANCH CIRCUIT WIRING TO BE 3/12, 1/2" GROUND INSTALLED CONCEALED. REFER TO ELECTRICAL SPECIFICATIONS FOR WIRING METHODS.



1 LEVEL 5 - SECTOR 1
SCALE: 1/8" = 1'-0"