

CONSULTANTS

CIVIL / LANDSCAPE ARCHITECT
Sebago Technics
75 John Roberts Road, Suite
1A, South Portland, ME 04106

STRUCTURAL ENGR: BUILDING ENVELOPE CONSULTANT
Stinson Gumpertz & Heigel Inc.
41 Seyon Street, Building 1, Suite 570,
Waltham, MA 02453

MEP/ELECTRICAL ENGINEER: CODE
AKF Group LLC
99 Bedford Street, 2nd Floor, Boston MA 02111

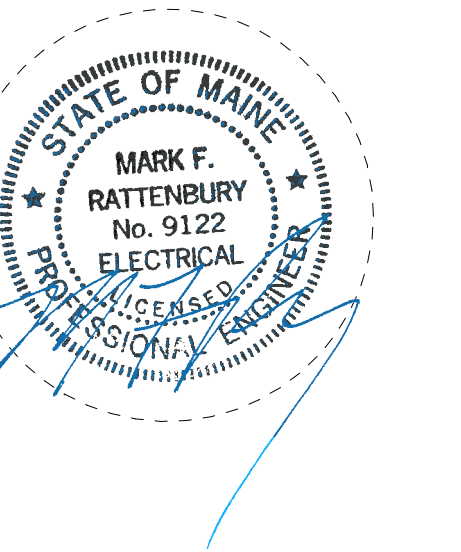
CONSTRUCTION MANAGER
Turner Construction
2 Seaport Lane, Suite 200, Boston, MA 02210

ELEVATOR CONSULTANT
VDA (Van Deusen & Associates)
101 Summer Street, 4th Floor, Boston MA
02110

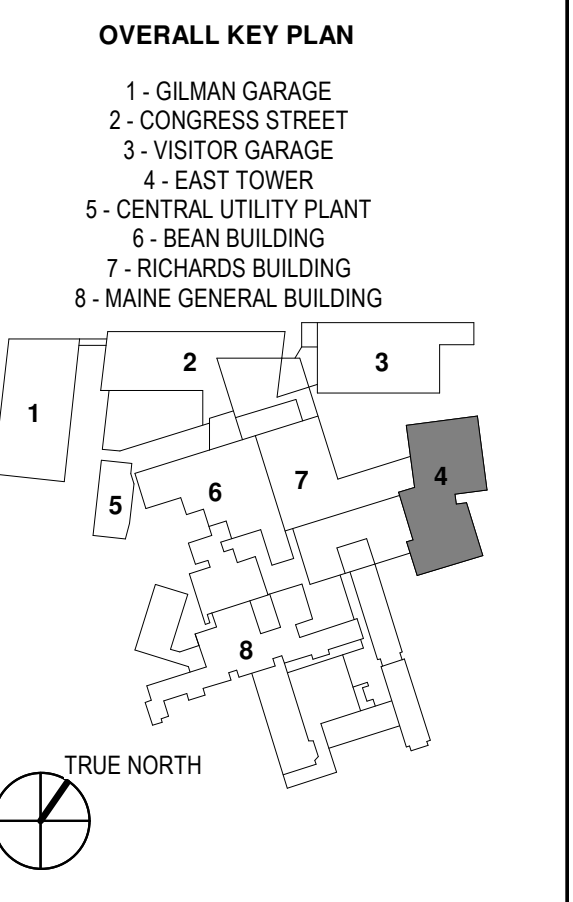
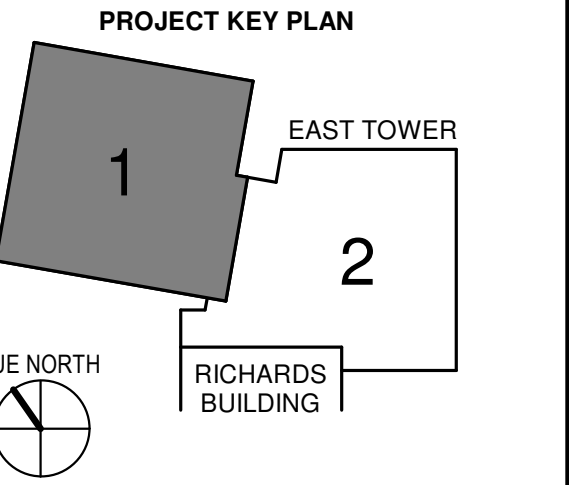
COST ESTIMATOR
D. G. Jones International
3 Baldwin Green Common, Suite 202, Woburn, MA 01801

PROJECT TITLE

**East Tower 6 & 7
Addition**
22 Bramhall Street
Portland, ME 04102



KEY PLANS



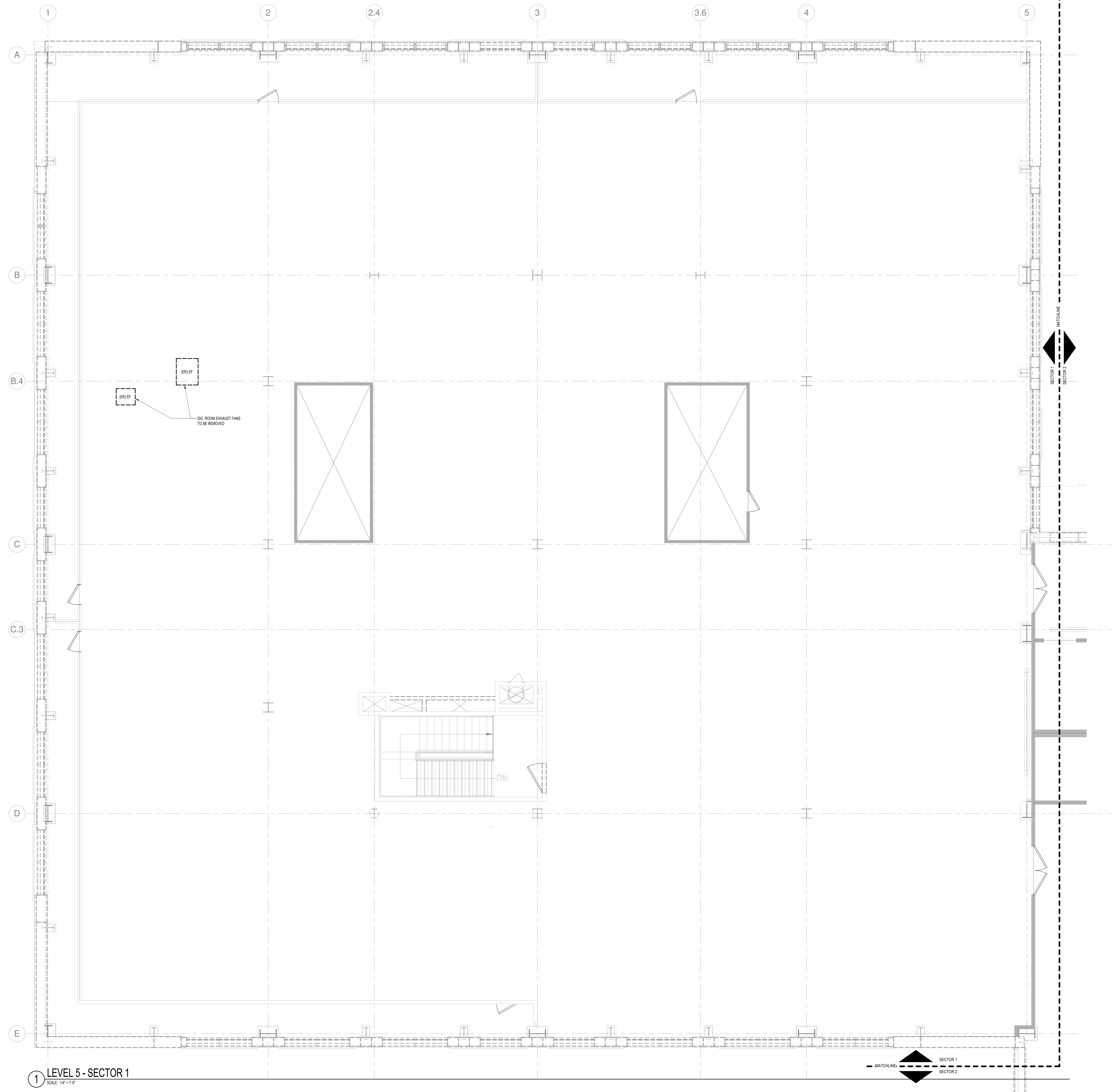
CONSTRUCTION DOCUMENTS
JANUARY 26, 2018

NO	ISSUE	DATE
Job Number	B150312-000	
Drawn	MMS	
Checked	MFR	
Approved	MFR	

TITLE
**ELECTRICAL FIFTH
FLOOR
DEMOLITION PLAN
- SECTOR 1**

SHEET NUMBER
E04-51

- DRAWING NOTES - FIFTH FLOOR:**
- REFER TO DRAWINGS E00-01 FOR ELECTRICAL SYMBOLS, DEMOLITION NOTES AND ABBREVIATIONS.
 - REFER TO DRAWINGS E00-11 AND E00-12 FOR ELECTRICAL AND MECHANICAL EQUIPMENT SCHEDULES.
 - COORDINATE EXACT LOCATION OF ALL MECHANICAL EQUIPMENT WITH MECHANICAL DRAWINGS.
 - ALL FEEDS OR BRANCH CIRCUITS RELATED TO EQUIPMENT SHOWN TO BE REMOVED SHALL BE REMOVED BACK TO SOURCE PANELBOARD.



LEVEL 5 - SECTOR 1
SCALE: 1/4" = 1'-0"

