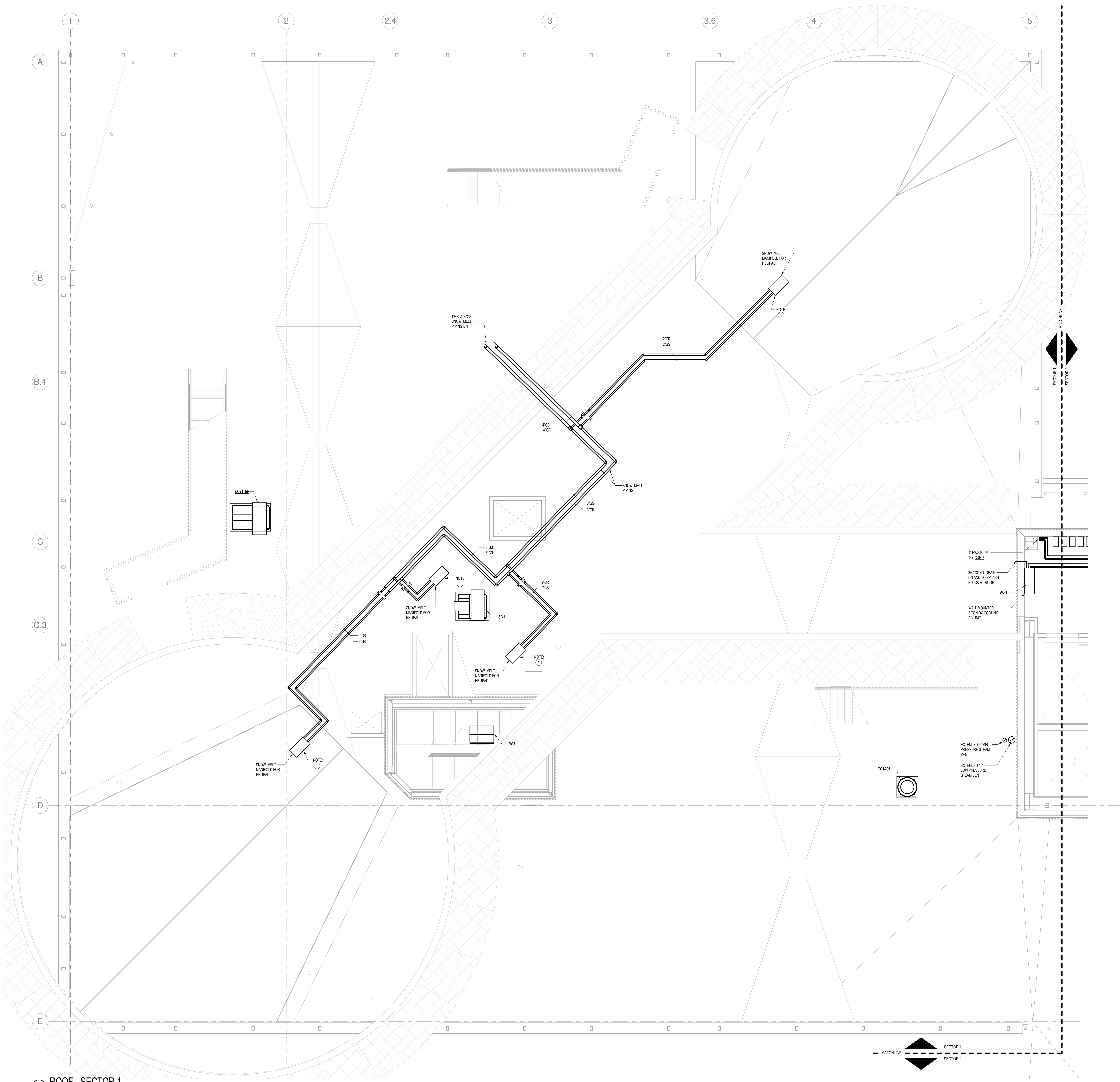


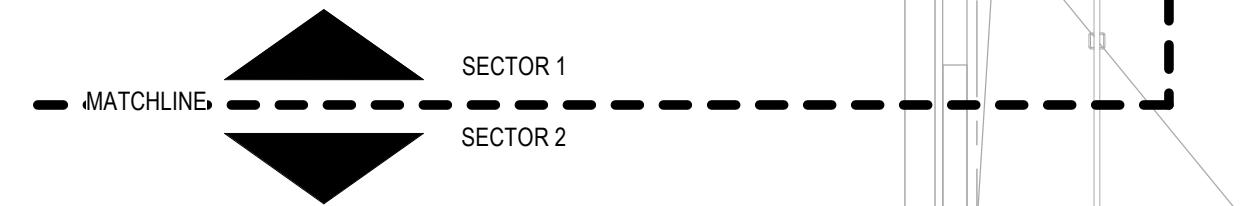
NO	ISSUE	DATE

Job Number: B150312-000  
Drawn: TU  
Checked: DPR  
Approved: DPR

**DRAWING KEY NOTES:**  
① PROVIDE STAINLESS STEEL ENCLOSURE INSULATED WITH 2" THICK MINERAL WOOL INSULATION FOR SNOW MELT MANIFOLD MOUNTED ON INSULATED. LOCATE MANIFOLD PER SNOW MELT MANUFACTURERS RECOMMENDATIONS. PROVIDE INSULATED SNOW MELT TUBING FROM MANIFOLD TO CONCRETE DECK. (TYP. 4 LOCATIONS)



**1 ROOF - SECTOR 1**  
SCALE: 1/4" = 1'-0"



3/29/2018 11:34:20 AM  
C:\Revit Local Files\_B150312\000\MDC East Tower 6&7 MEP17\_Constr\_mechanical.rvt