

KEY NOTES  
 SYMBOL DENOTES KEY NOTE

CONSULTANTS

CIVIL / LANDSCAPE ARCHITECT  
**Sebago Technics**  
 75 John Roberts Road, Suite  
 1A, South Portland, ME 04106

STRUCTURAL ENG./ BUILDING ENVELOPE CONSULTANT  
**Simpson Gumpertz & Heger Inc.**  
 41 Seiver Street, Building 1, Suite 570  
 Waltham, MA 02453

MEPP ENGINEER CODE  
**AKF Group LLC**  
 99 Bedford Street, 2nd Floor, Boston MA 02111

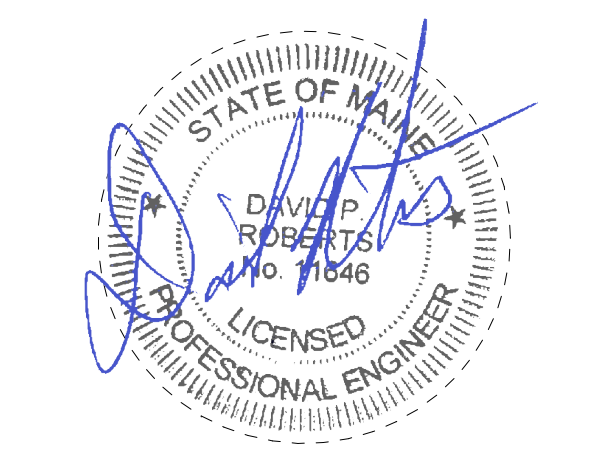
CONSTRUCTION MANAGER  
**Turner Construction**  
 2 Seaport Lane, Suite 200, Boston, MA 02210

ELEVATOR CONSULTANT  
**VDA (Van Deusen & Associates)**  
 101 Summer Street, 4th Floor, Boston MA  
 02110

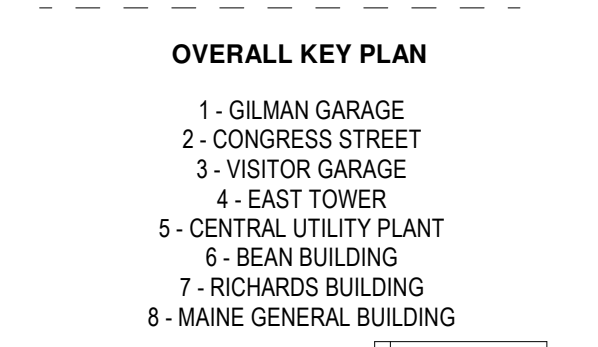
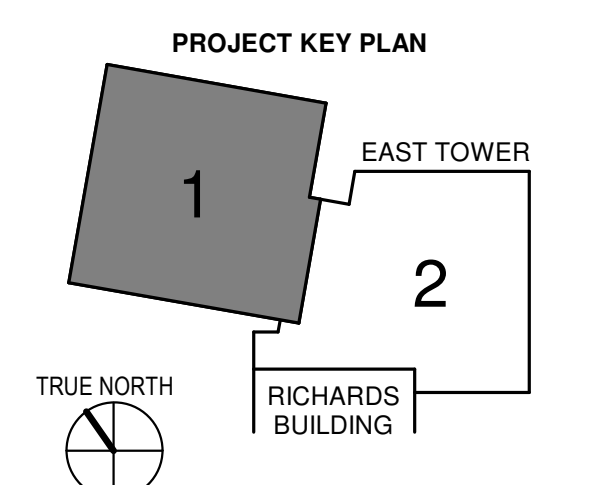
COST ESTIMATOR  
**D. G. Jones International**  
 3 Baldwin Green Common, Suite 202, Woburn, MA 01801

PROJECT TITLE

**East Tower 6 & 7  
 Addition**  
 22 Bramhall Street  
 Portland, ME 04102



KEY PLANS

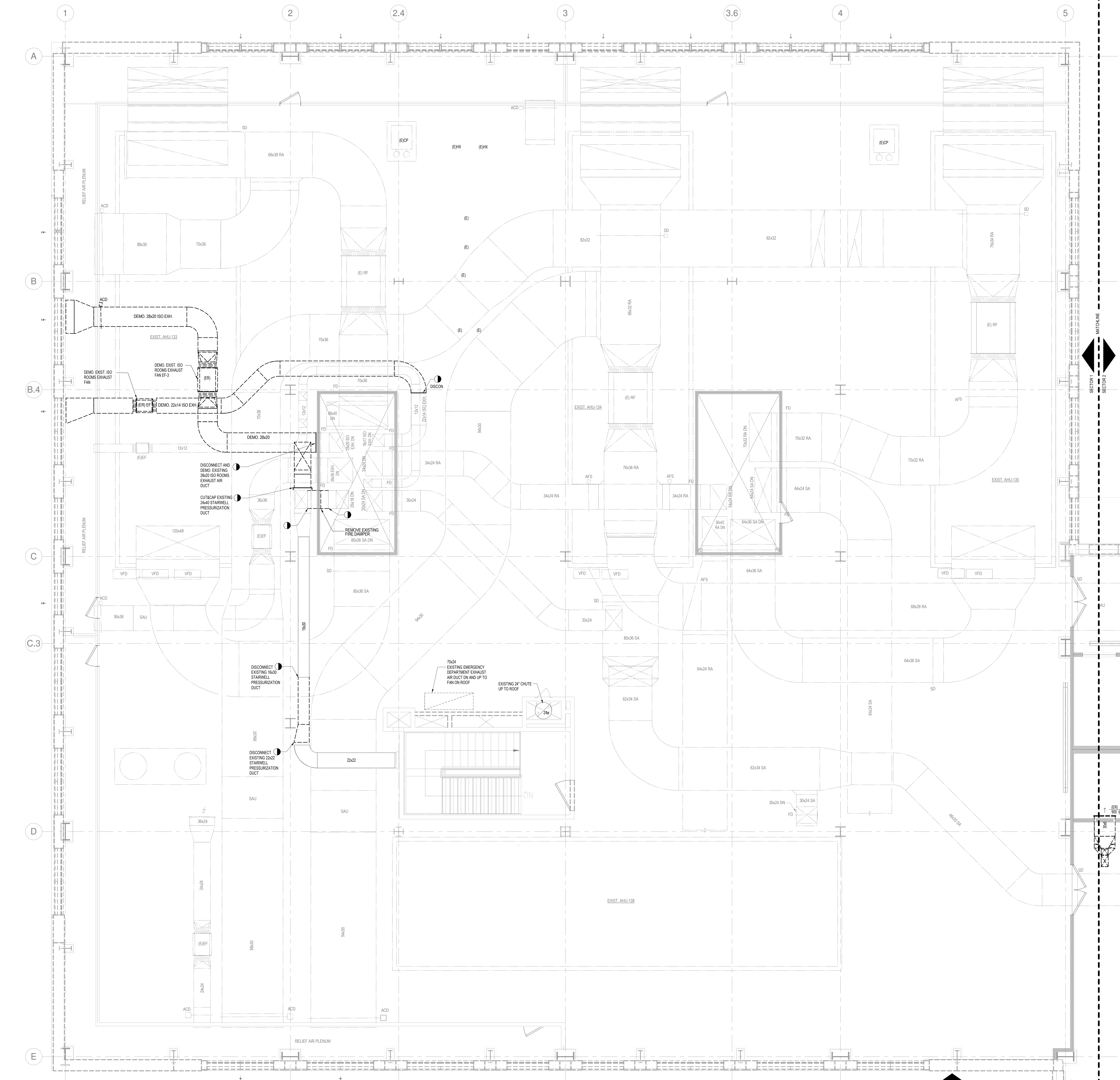


CONSTRUCTION DOCUMENTS  
 JANUARY 28, 2018

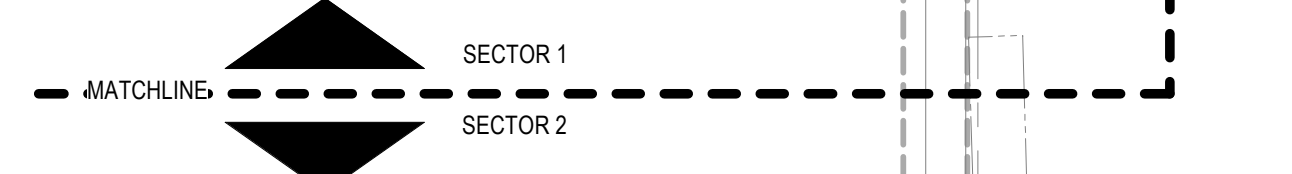
NO	ISSUE	DATE
Job Number	B150312-000	
Drawn	TU	
Checked	DFR	
Approved	DFR	

**MECHANICAL  
 FIFTH FLOOR  
 DUCTWORK  
 DEMOLITION PLAN  
 SECTOR 1**

**M04-51**  
 SHEET NUMBER



1 LEVEL 5 - SECTOR 1  
 SCALE: 1/4" = 1'-0"



3/29/2018 11:24:14 AM  
 C:\Revit Local Files\_B150312\000\MDC East Tower 6&7 MEP17\_Constrl\_construction.rvt