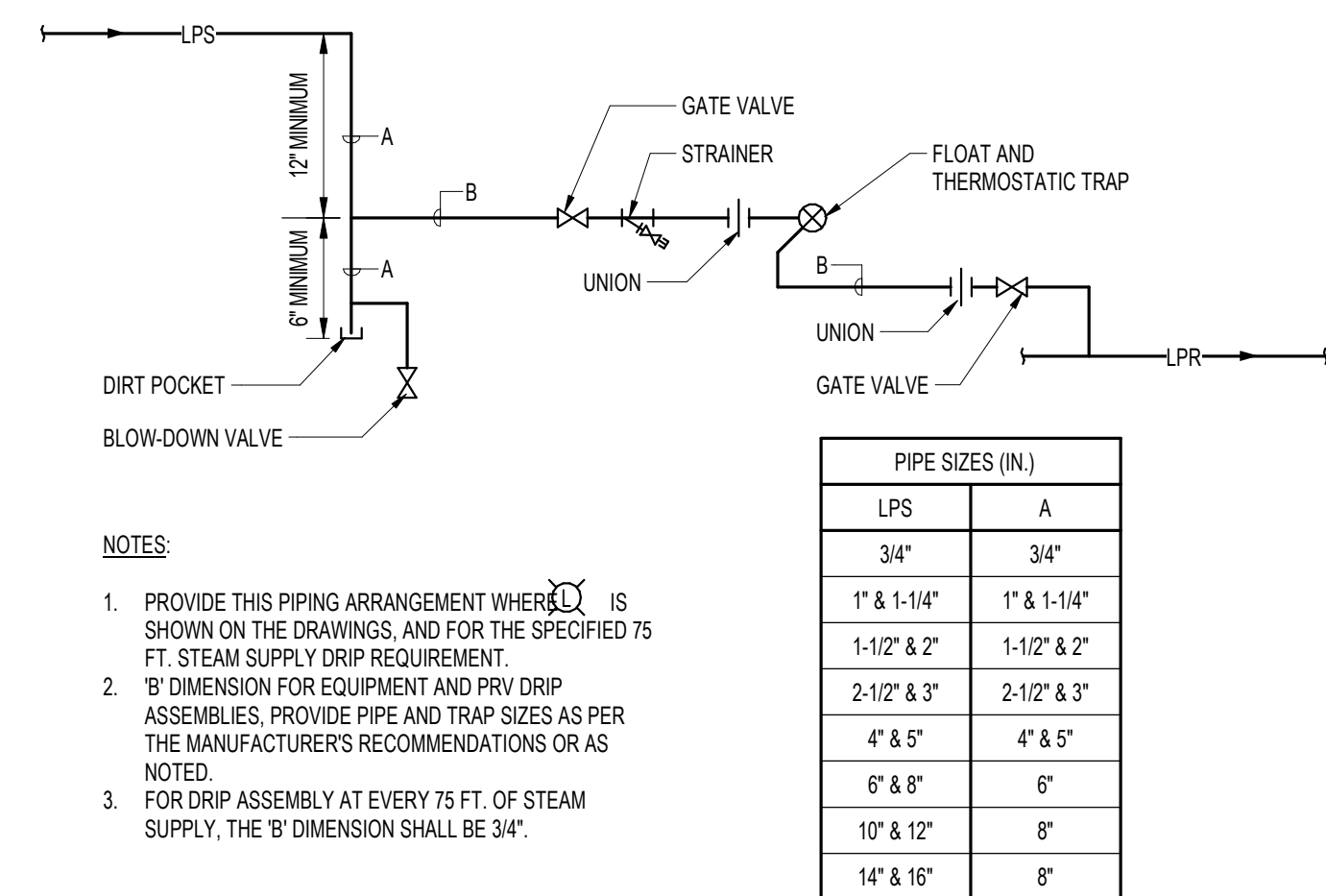
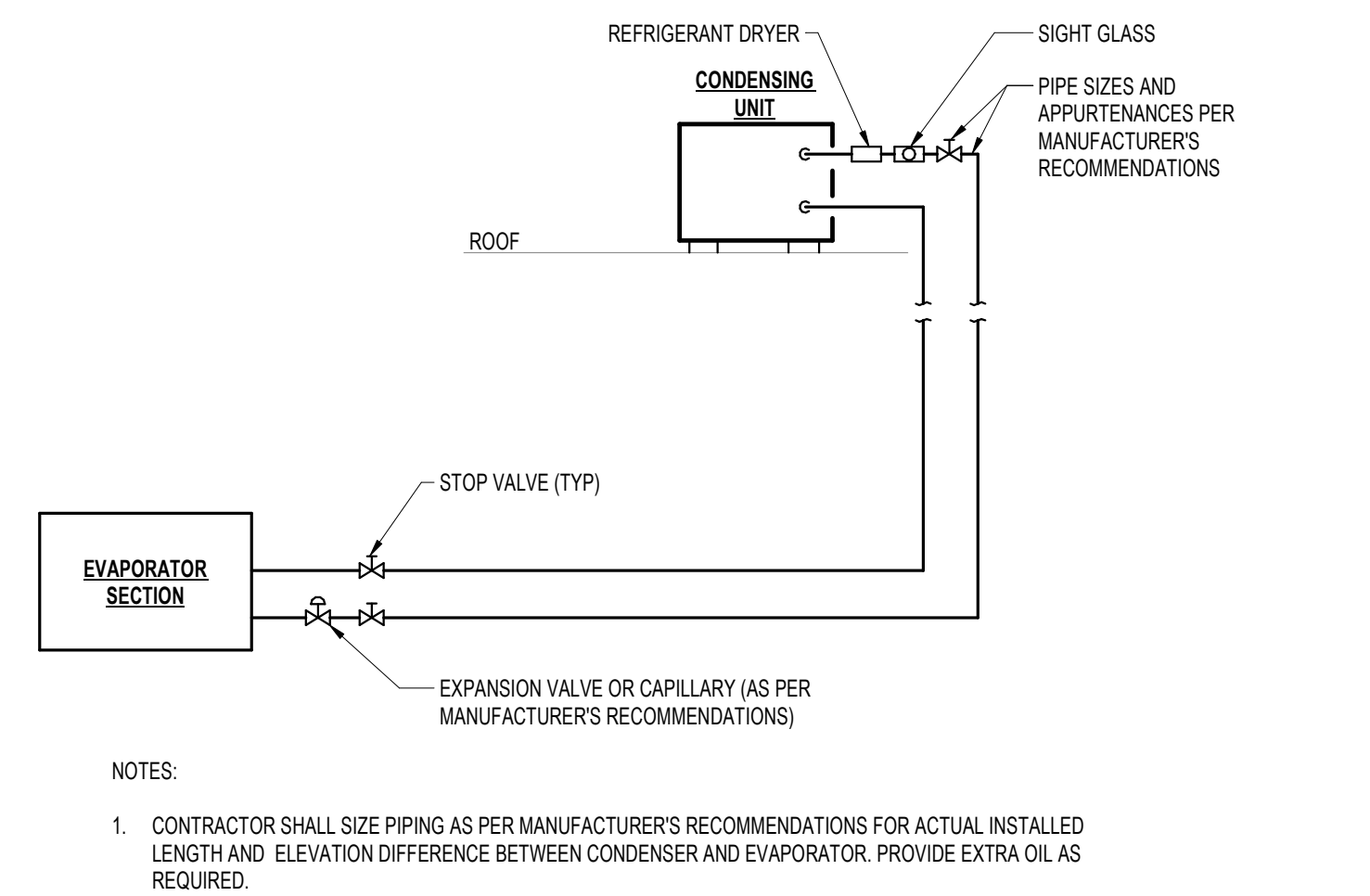


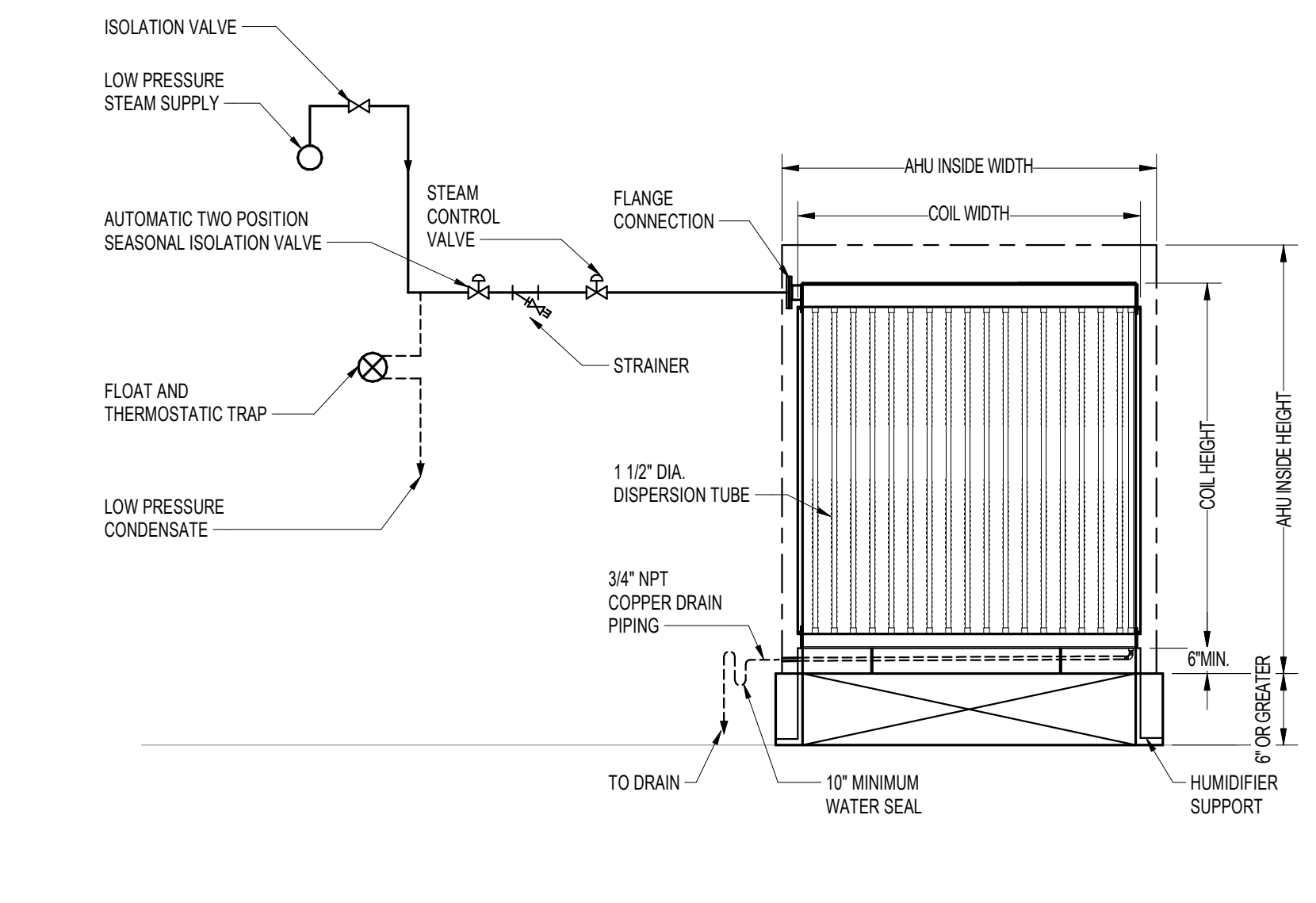
1 EXTERIOR WALL PIPE PENETRATION SEAL ASSEMBLY
SCALE: NTS



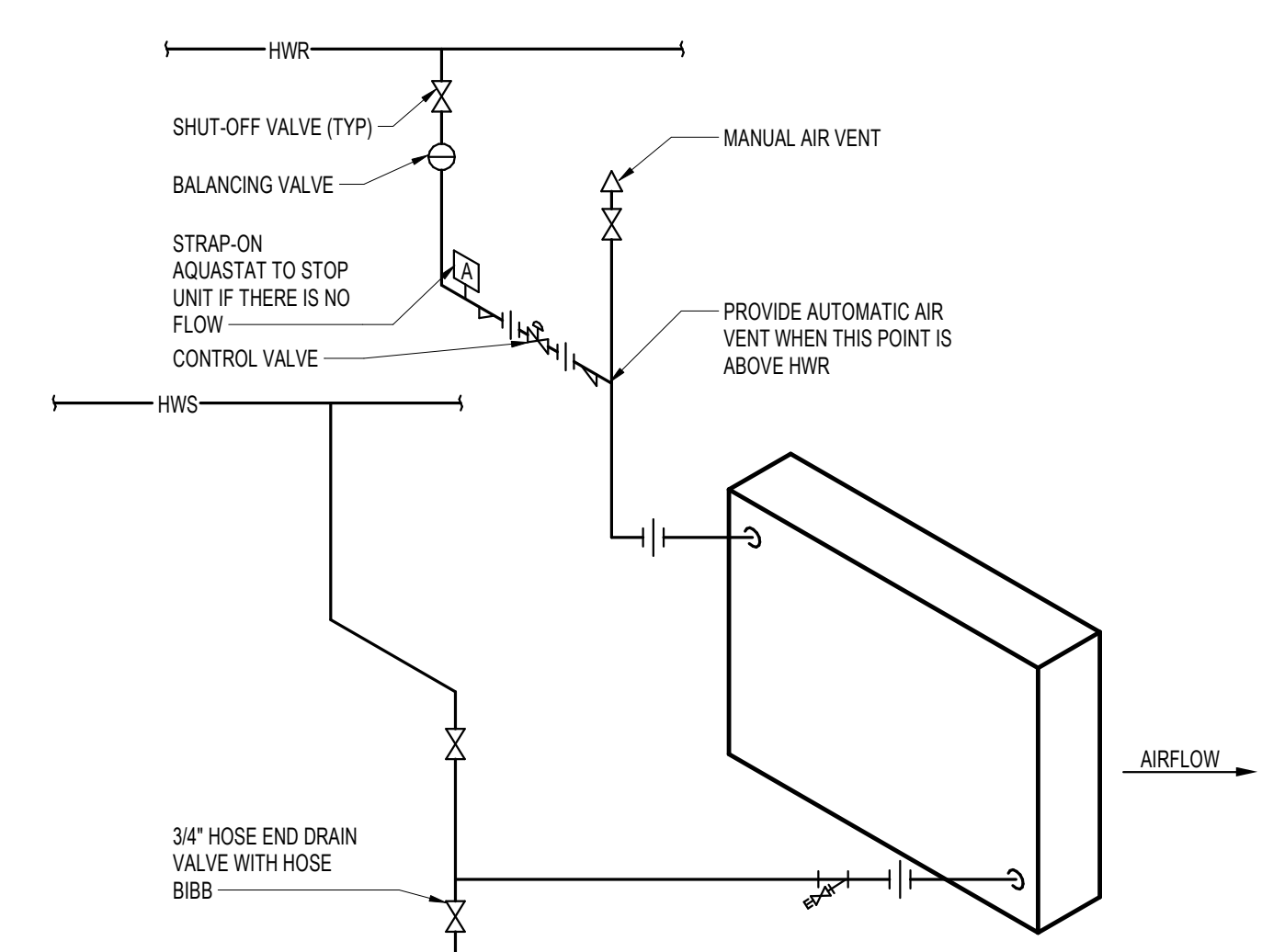
2 LOW PRESSURE STEAM DRIP ASSEMBLY
SCALE: NTS



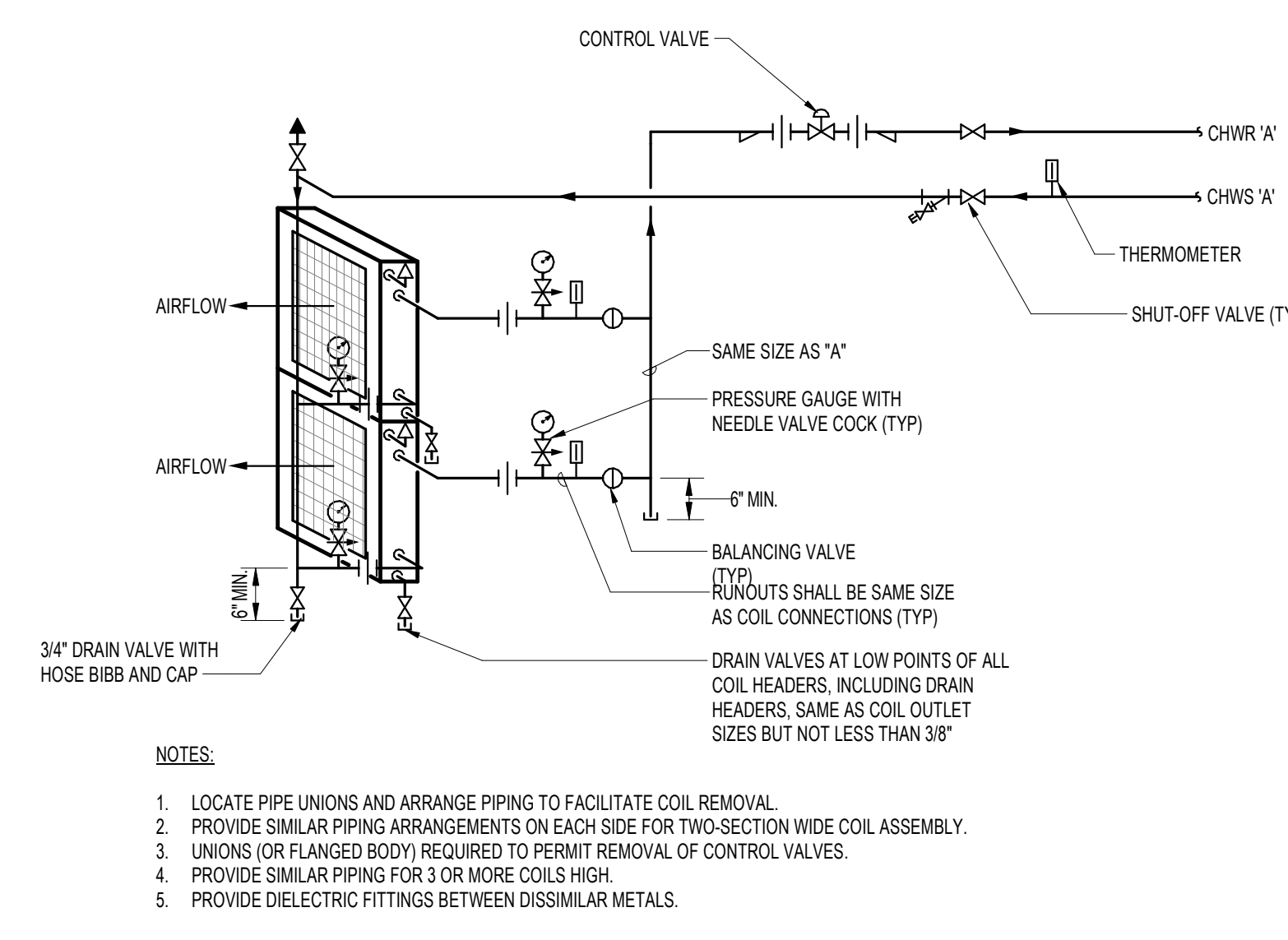
3 TYPICAL REFRIGERANT PIPING
SCALE: NTS



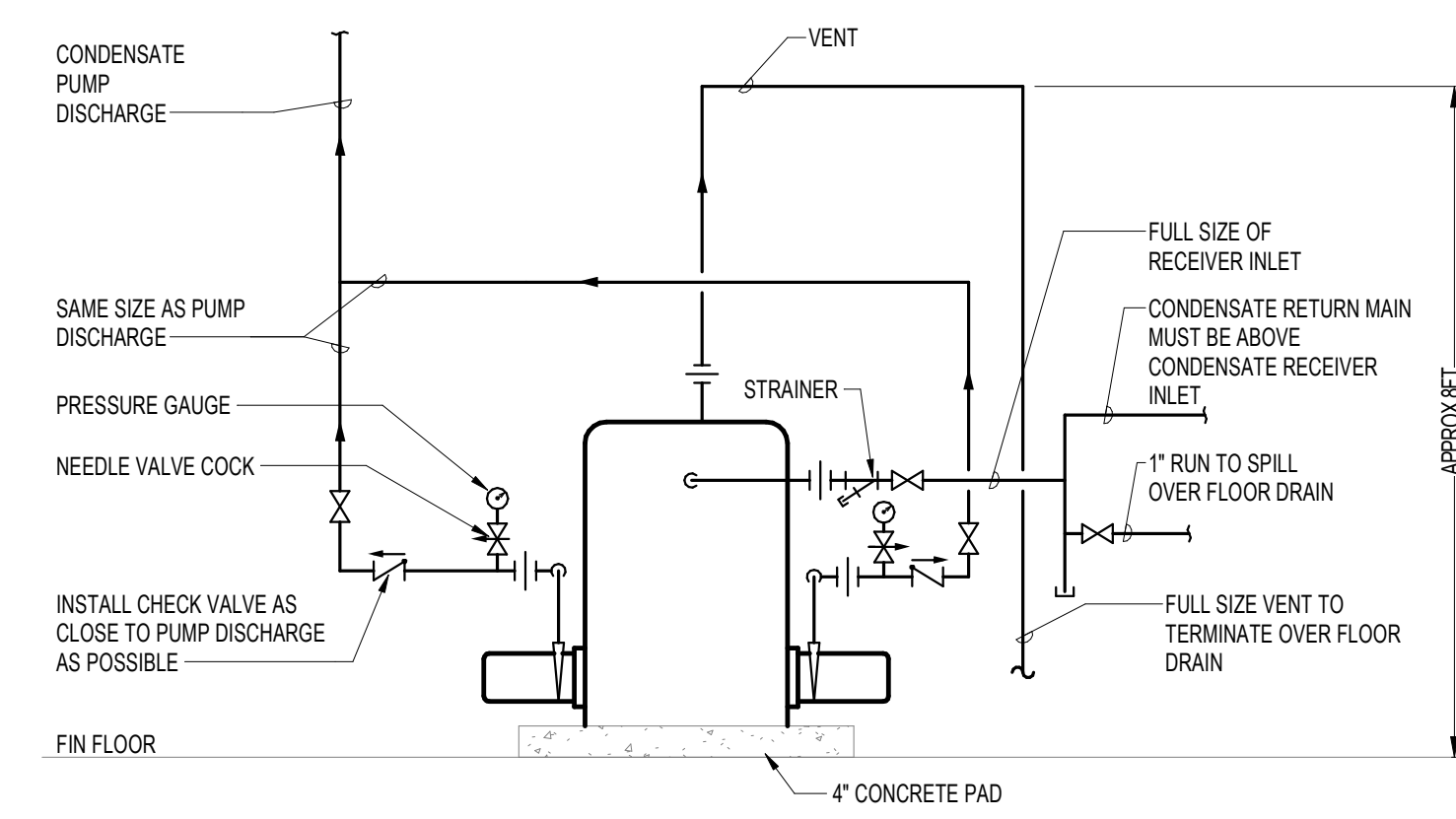
4 PIPING CONNECTIONS FOR MANIFOLD HUMIDIFIER - STEAM
SCALE: NTS



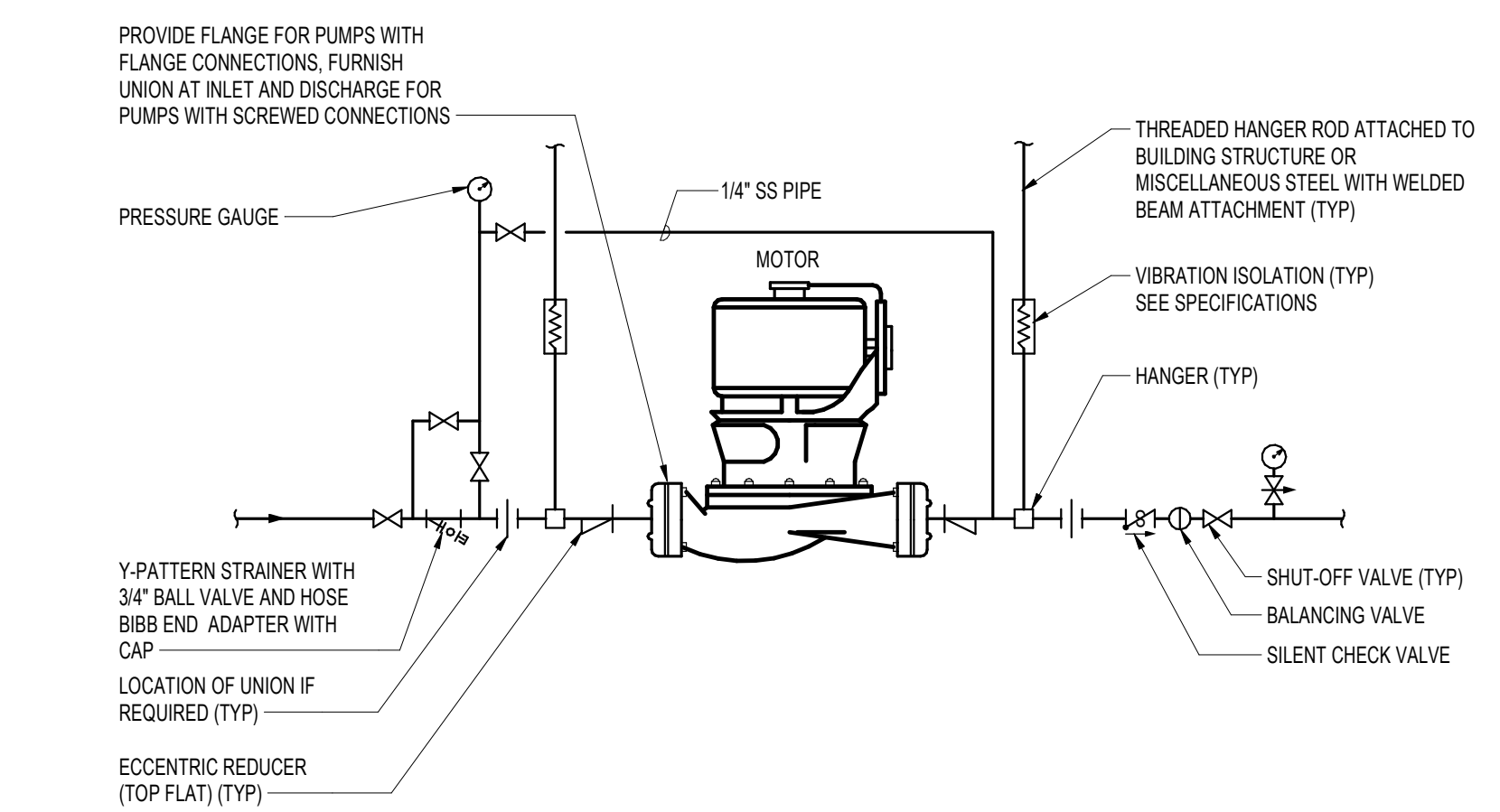
5 HOT WATER UNIT HEATER PIPING
SCALE: NTS



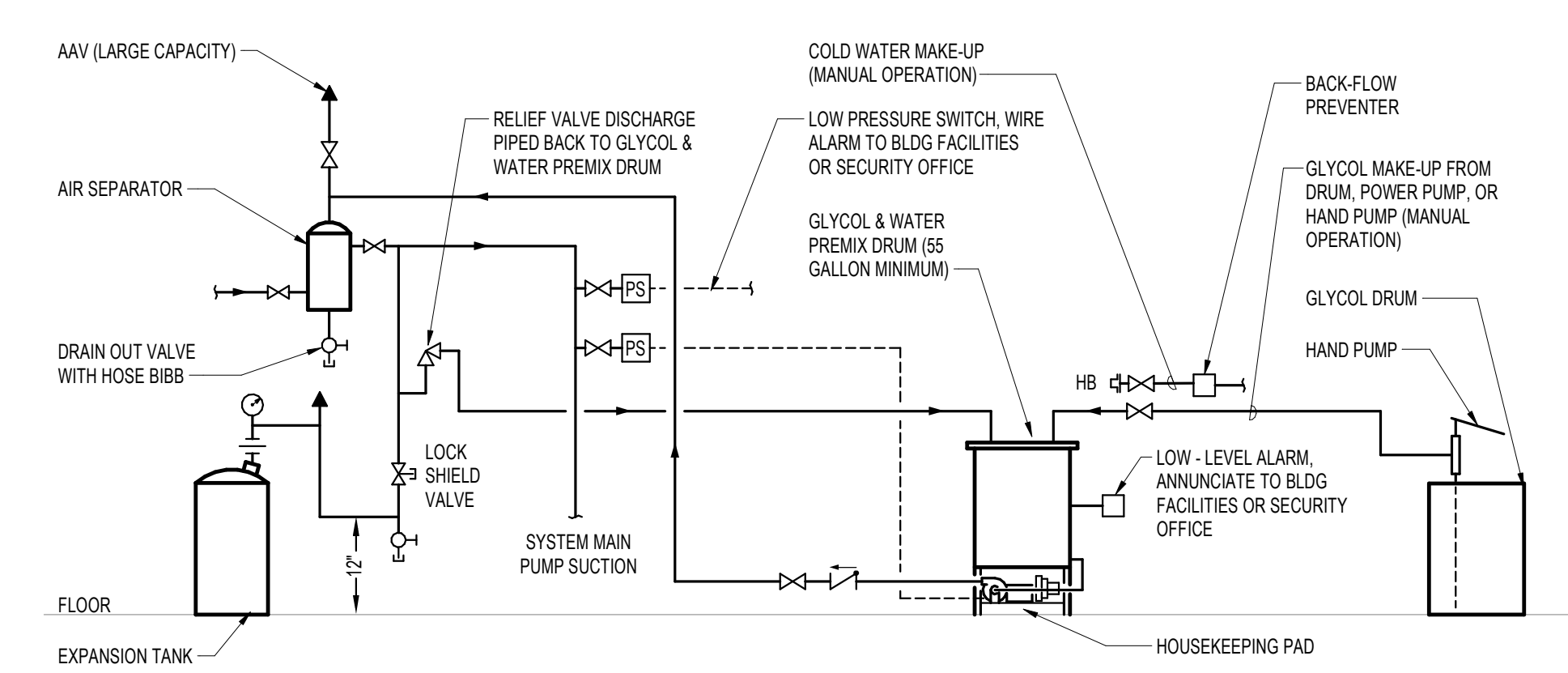
6 CHILLED WATER COOLING COIL CONNECTIONS - TWO OR MORE HIGH
SCALE: NTS



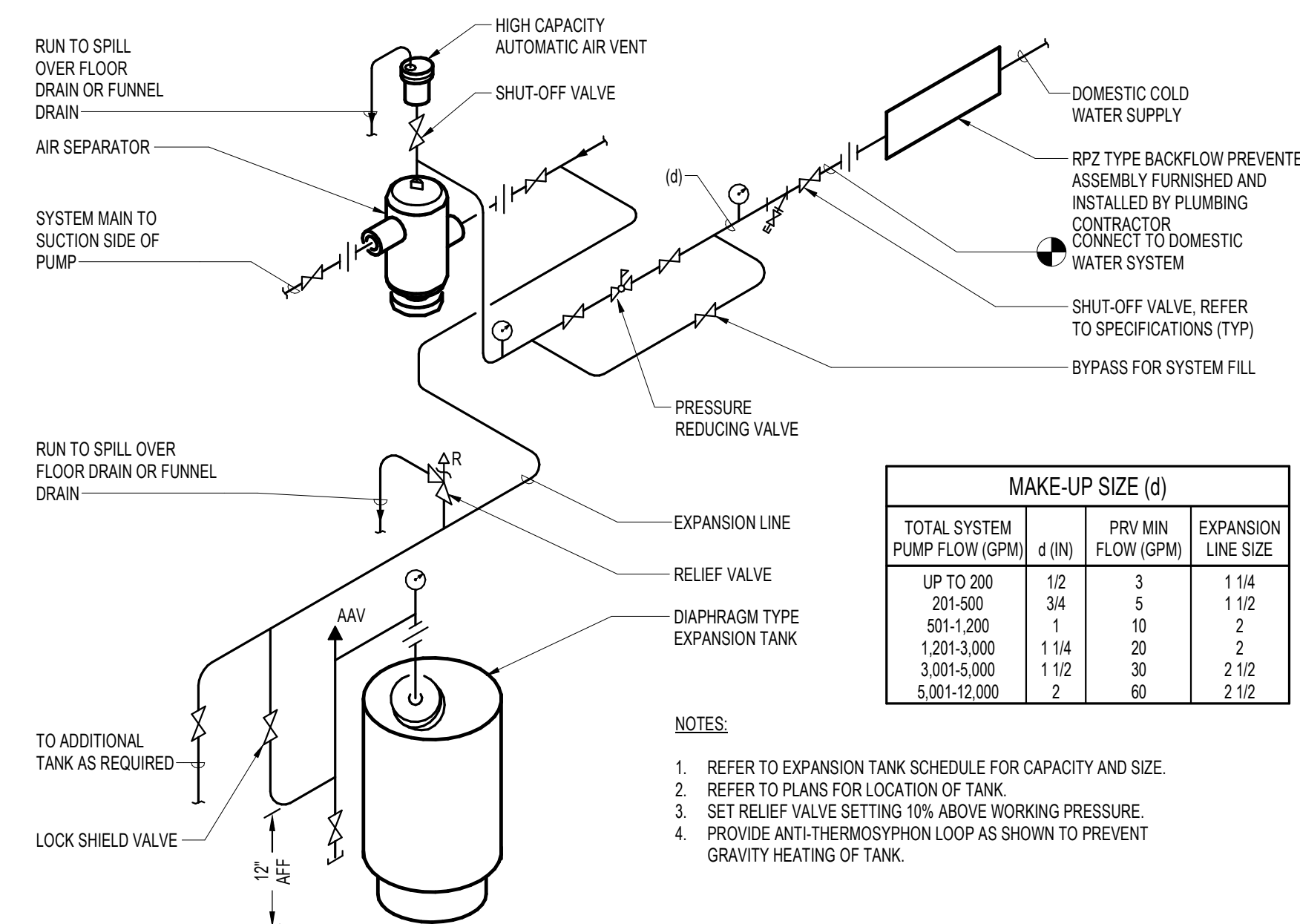
7 DUPLEX CONDENSATE PUMP PIPING FOR OPEN GRAVITY RETURN SYSTEM
SCALE: NTS



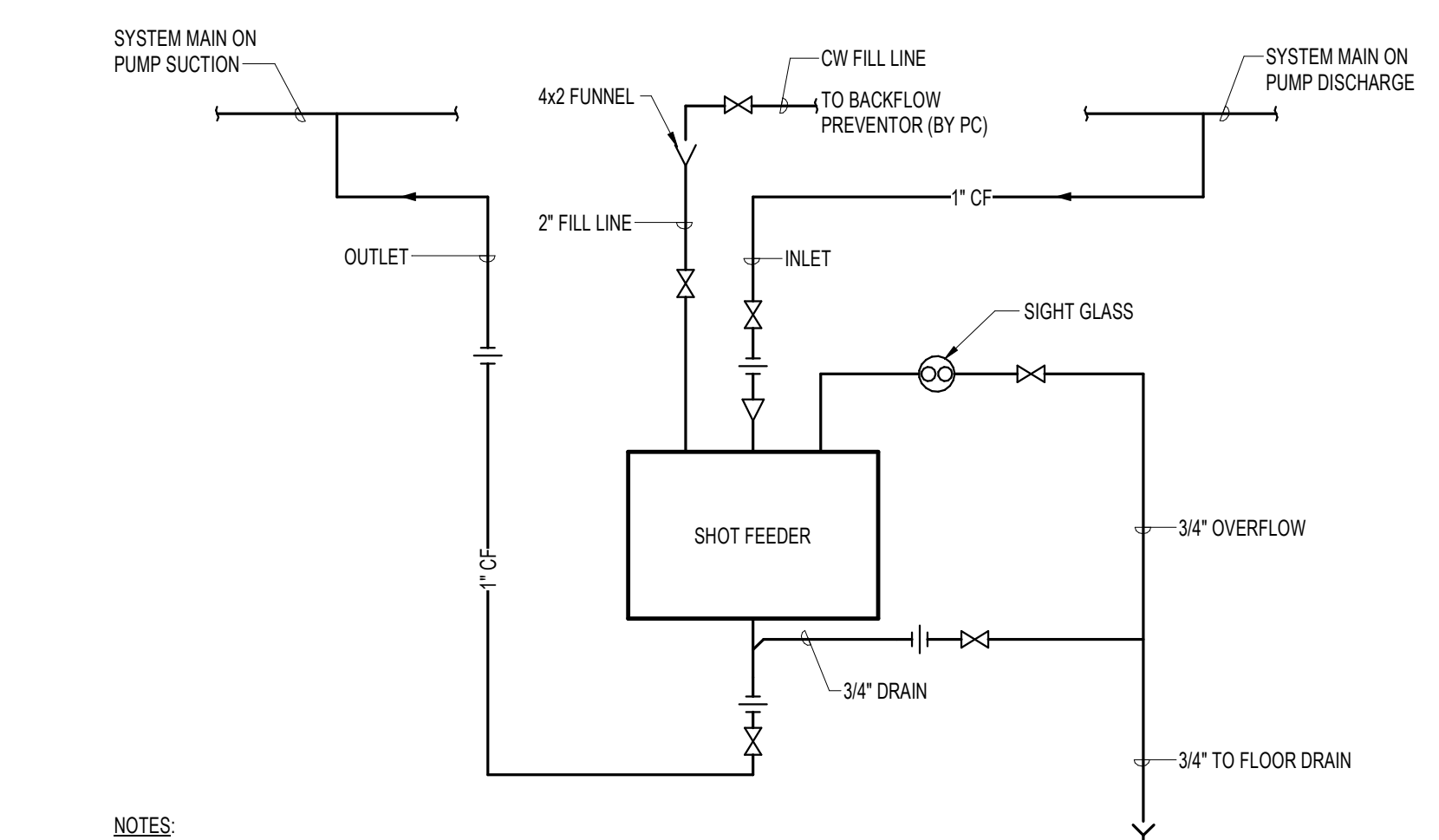
8 VERTICAL IN-LINE PUMP SUSPENDED INSTALLATION
SCALE: NTS



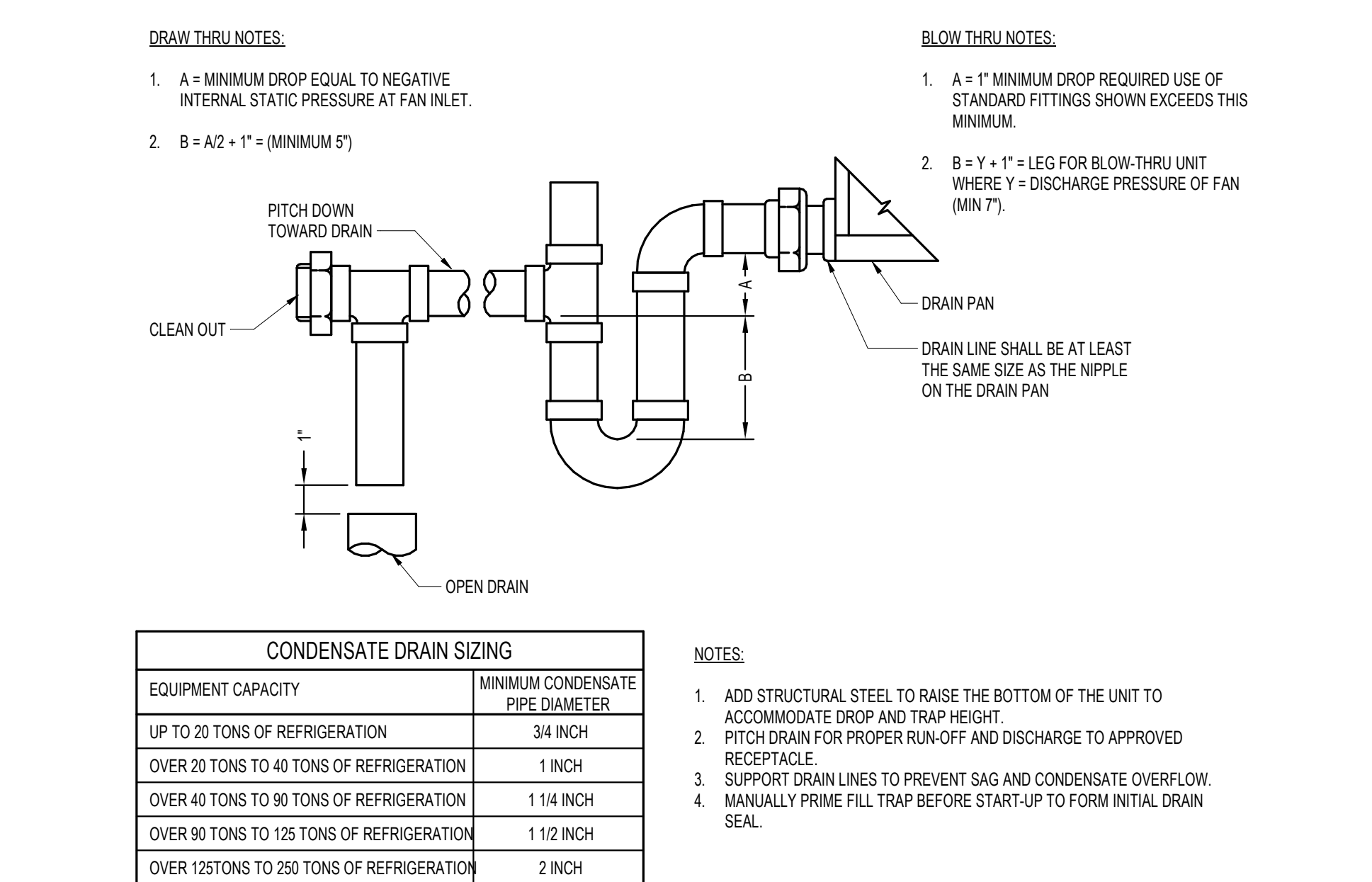
9 GLYCOL CHARGING DETAIL
SCALE: NTS



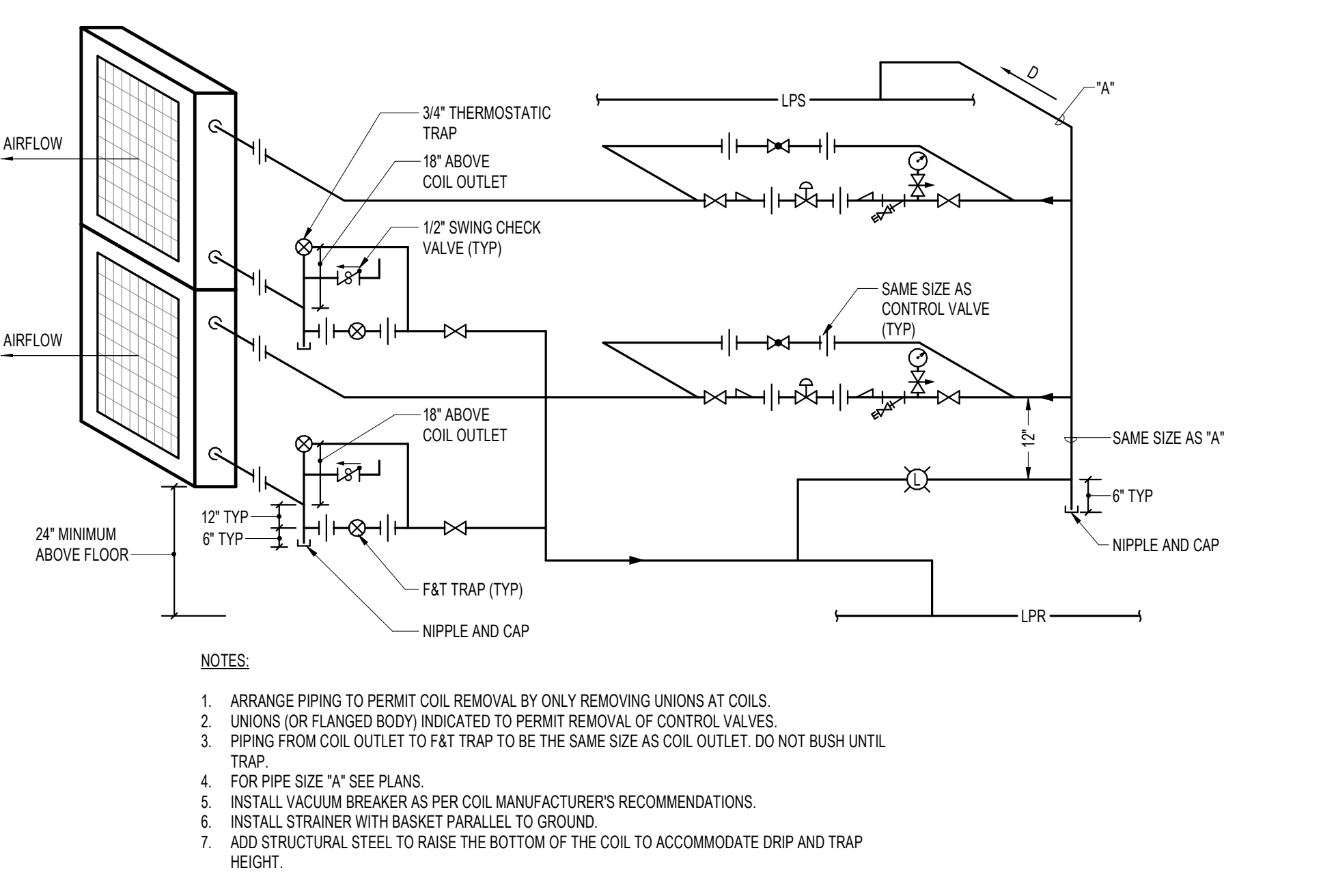
10 VERTICAL DIAPHRAGM TYPE EXPANSION TANK
SCALE: NTS



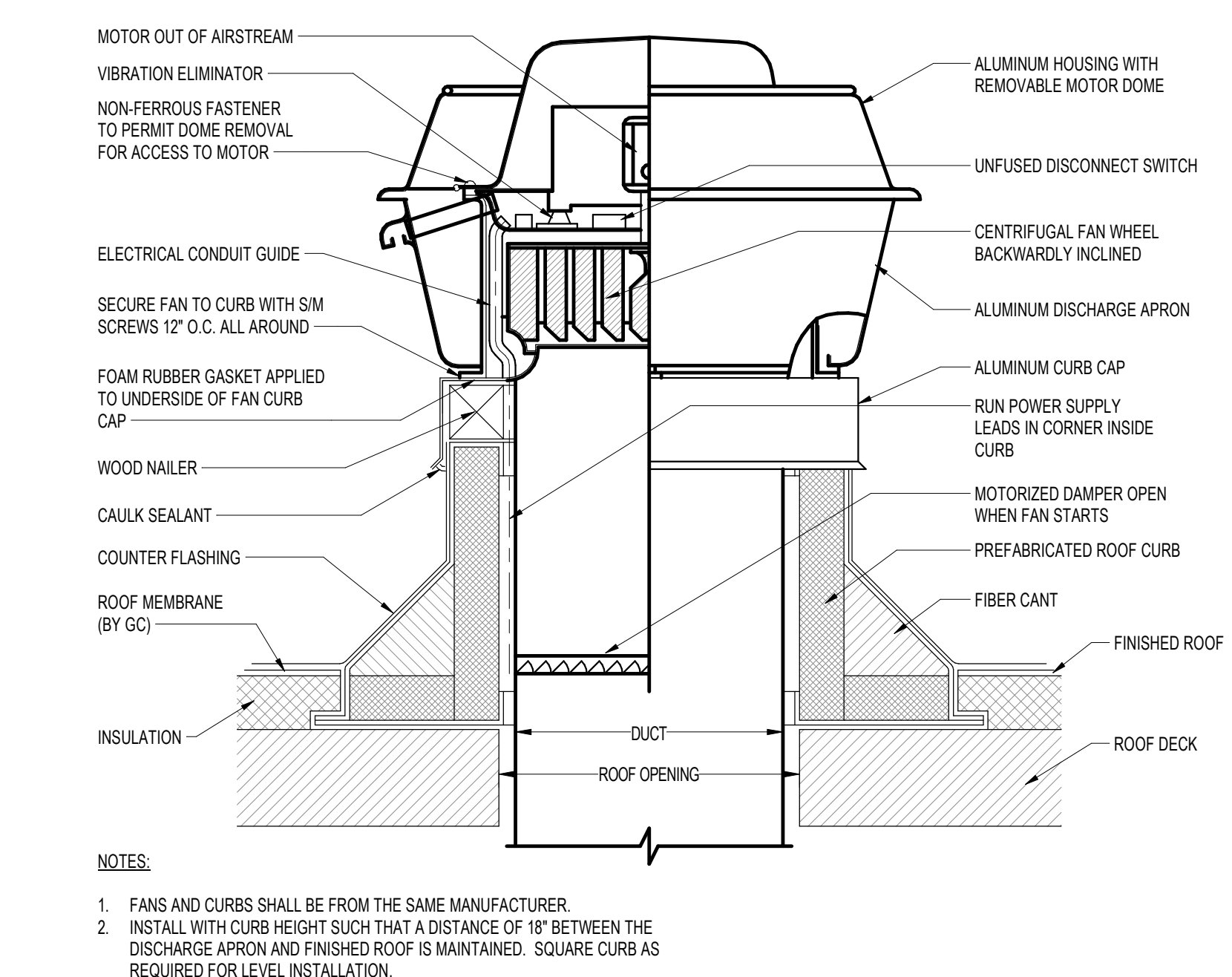
11 CHEMICAL SHOT FEEDER PIPING
SCALE: 1:1



12 AIR HANDLING UNIT DRAIN TRAP
SCALE: NTS



13 STEAM COIL CONNECTIONS, OPEN GRAVITY SYSTEM - TWO OR MORE HIGH
SCALE: NTS



14 ROOF EXHAUST FAN (UPBLAST)
SCALE: NTS

PERKINS + WILL
225 Franklin Street, Suite 1100
Boston, MA 02110
617.478.0300
617.478.0321
www.perkinswill.com

CLIENT
Maine Medical Center
MaineHealth

22 Bramhall Street
Portland, ME 04102

CONSULTANTS
CIVIL/LANDSCAPE ARCHITECT
Sebago Technics
75 John Roberts Road, Suite
1A, South Portland, ME 04106
STRUCTURAL ENG./BUILDING ENVELOPE CONSULTANT
Stinson Gumpertz & Hepler Inc.
41 Sevon Street, Building 1, Suite 570
Waltham, MA 02453
MEP/ELECTRICAL ENGINEER
AKF Group LLC
99 Bedford Street, 2nd Floor, Boston, MA 02111
CONSTRUCTION MANAGER
Turner Construction
2 Seaport Lane, Suite 200, Boston, MA 02210
ELEVATOR CONSULTANT
VDA (Van Deusen & Associates)
101 Summer Street, 4th Floor, Boston MA
02110
COST ESTIMATOR
D. G. Jones International
3 Baldwin Green Common, Suite 202, Woburn, MA 01801

PROJECT TITLE
East Tower 6 & 7
Addition
22 Bramhall Street
Portland, ME 04102

KEY PLANS
PROJECT KEY PLAN
1 - EAST TOWER
2 - RICHARDS BUILDING
OVERALL KEY PLAN
1 - GILMAN GARAGE
2 - CONGRESS STREET
3 - VISITOR GARAGE
4 - EAST TOWER
5 - CENTRAL UTILITY PLANT
6 - BEAN BUILDING
7 - RICHARDS BUILDING
8 - MAINE GENERAL BUILDING

CONSTRUCTION DOCUMENTS
JANUARY 28, 2018

NO	ADDENDUM NO.	DATE
1	ADDENDUM NO. 1	03/22/18

NO	ISSUE	DATE

Job Number: B150312-000
Drawn: TU
Checked: DPR
Approved: DPR

TITLE
MECHANICAL
DETAILS
SHEET NUMBER
MOO-22
Copyright 2017 © Perkins+Will