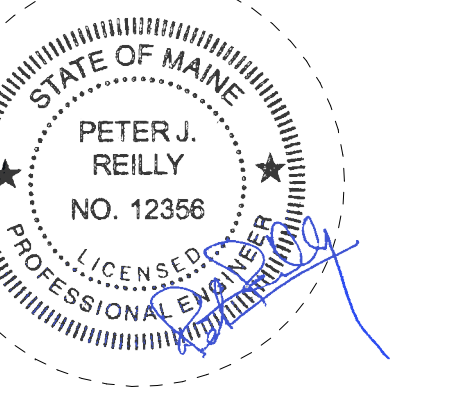


CONSULTANTS

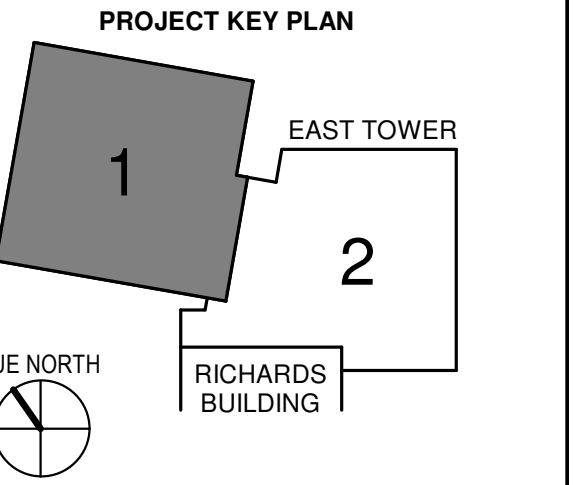
- CIVIL/LANDSCAPE ARCHITECT
Sebago Technics
 75 John Roberts Road, Suite
 1A, South Portland, ME 04106
- STRUCTURAL/ENR/BUILDING ENVELOPE CONSULTANT
Singston Gumpertz & Hager Inc.
 41 Seay Street, Building 1, Suite 570,
 Waltham, MA 02453
- MEPP ENGINEER CODE
AKF Group LLC
 99 Bedford Street, 2nd Floor, Boston, MA 02111
- CONSTRUCTION MANAGER
Turner Construction
 2 Seaport Lane, Suite 200, Boston, MA 02210
- ELEVATOR CONSULTANT
VDA (Van Deusen & Associates)
 101 Summer Street, 4th Floor, Boston MA
 02110
- COST ESTIMATOR
D. G. Jones International
 3 Baldwin Green Common, Suite 202, Woburn, MA 01801

PROJECT TITLE

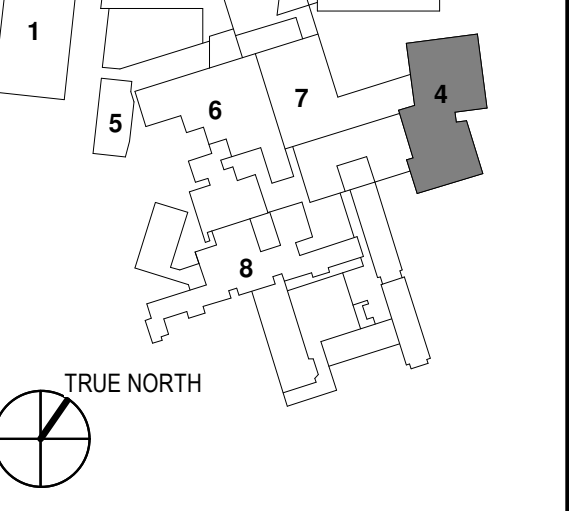
**East Tower 6 & 7
 Addition**
 22 Bramhall Street
 Portland, ME 04102



KEY PLANS



- OVERALL KEY PLAN
- GILMAN GARAGE
 - CONGRESS STREET
 - VISITOR GARAGE
 - EAST TOWER
 - CENTRAL UTILITY PLANT
 - SEAN BUILDING
 - RICHARDS BUILDING
 - MAINE GENERAL BUILDING



CONSTRUCTION DOCUMENTS

JANUARY 28, 2018

ADDENDUM NO.	DATE
1	03/22/18

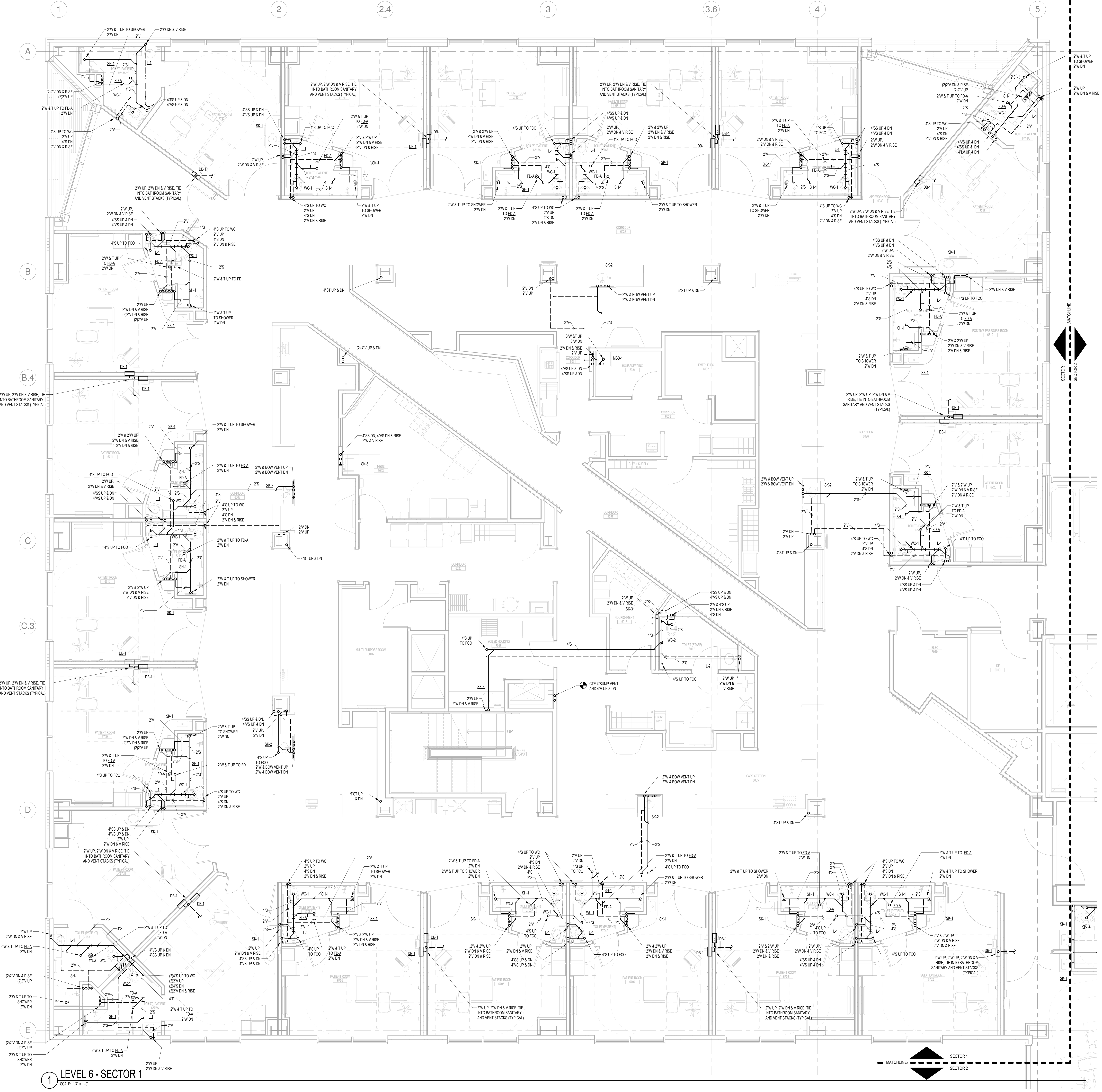
NO.	ISSUE	DATE

Job Number: B150312-000
 Drawn: DGC
 Checked: PJR
 Approved: PJR

TITLE
**PLUMBING LEVEL
 6 FLOOR
 DRAINAGE PLAN -
 SECTOR 1**

SHEET NUMBER

P12-61



LEVEL 6 - SECTOR 1
 SCALE: 1/4" = 1'-0"

