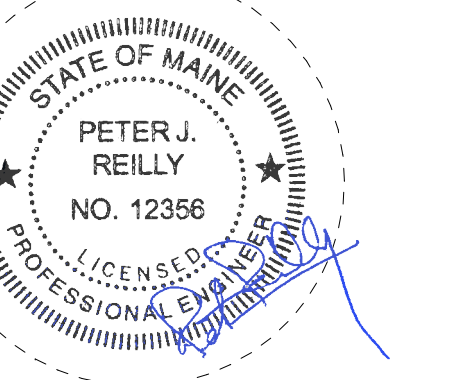


**CONSULTANTS**

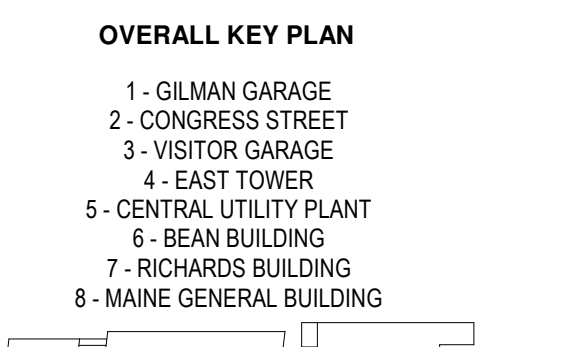
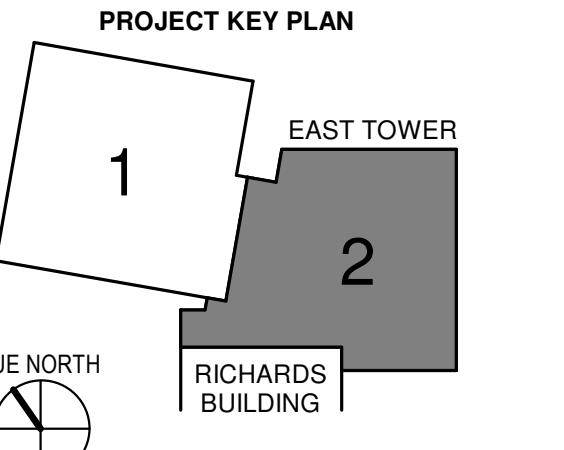
- CIVIL/LANDSCAPE ARCHITECT**  
 Sebago Technics  
 75 John Roberts Road, Suite  
 1A, South Portland, ME 04106
- STRUCTURAL/ENR/BUILDING ENVELOPE CONSULTANT**  
 Simpson Gumpertz & Heger Inc.  
 41 Seaver Street, Building 1, Suite 570  
 Waltham, MA 02453
- MERFP ENGINEER/COE**  
 AKF Group LLC  
 99 Bedford Street, 2nd Floor, Boston, MA 02111
- CONSTRUCTION MANAGER**  
 Turner Construction  
 2 Seaport Lane, Suite 200, Boston, MA 02210
- ELEVATOR CONSULTANT**  
 VDA (Van Deusen & Associates)  
 101 Summer Street, 4th Floor, Boston, MA  
 02110
- COST ESTIMATOR**  
 D. G. Jones International  
 3 Baldwin Green Common, Suite 202, Westbrook, MA 01801

**PROJECT TITLE**

**East Tower 6 & 7  
 Addition**  
 22 Bramhall Street  
 Portland, ME 04102



**KEY PLANS**

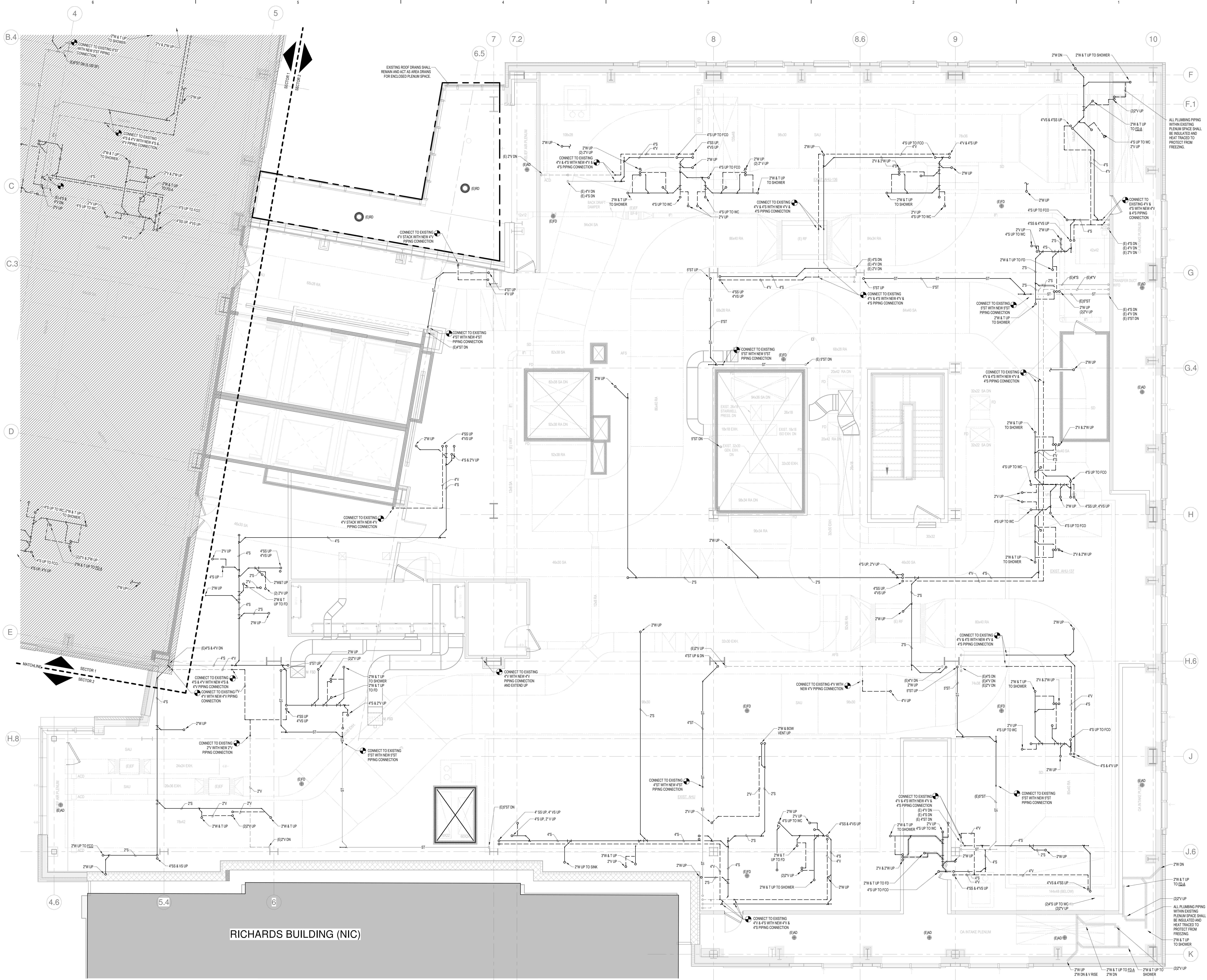


**CONSTRUCTION DOCUMENTS**  
 JANUARY 28, 2018

1	ADDENDUM NO. 1	03/22/18
NO	ISSUE	DATE
Job Number	B150312-000	
Drawn	DOC	
Checked	PJR	
Approved	PJR	

**TITLE**  
**PLUMBING LEVEL**  
**5 FLOOR**  
**DRAINAGE PLAN -**  
**SECTOR 2**

**SHEET NUMBER**  
**P12-52**



1 LEVEL 5 - SECTOR 2  
 SCALE: 1/4" = 1'-0"