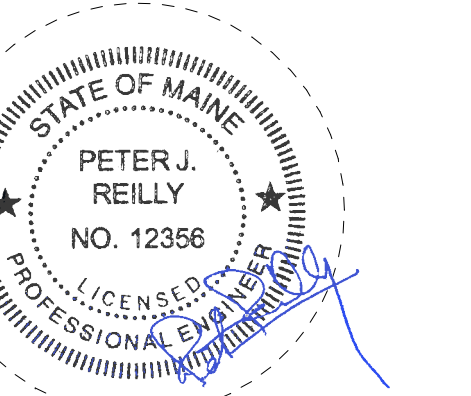


CONSULTANTS

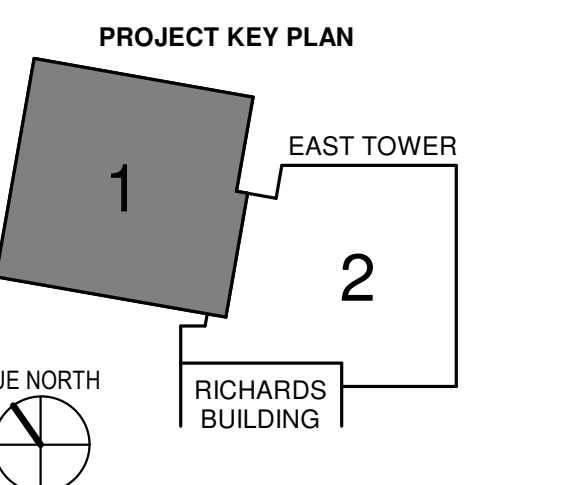
- CIVIL/LANDSCAPE ARCHITECT  
**Sebago Technics**  
 75 John Roberts Road, Suite  
 1A, South Portland, ME 04106
- STRUCTURAL/ENR/BUILDING ENVELOPE CONSULTANT  
**Singston Gumpertz & Hager Inc.**  
 41 Seay Street, Building 1, Suite 570,  
 Waltham, MA 02453
- MEPP/ENGINEER/COE  
**AKF Group LLC**  
 99 Bedford Street, 2nd Floor, Boston MA 02111
- CONSTRUCTION MANAGER  
**Turner Construction**  
 2 Seaport Lane, Suite 200, Boston, MA 02210
- ELEVATOR CONSULTANT  
**VDA (Van Deusen & Associates)**  
 101 Summer Street, 4th Floor, Boston MA  
 02110
- COST ESTIMATOR  
**D. G. Jones International**  
 3 Baldwin Green Common, Suite 202, Westbrook, MA 01801

PROJECT TITLE

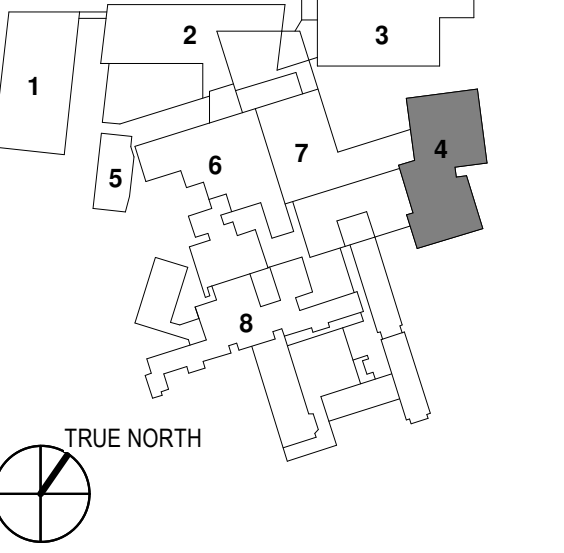
**East Tower 6 & 7  
 Addition**  
 22 Bramhall Street  
 Portland, ME 04102



KEY PLANS



- OVERALL KEY PLAN
- 1 - GILMAN GARAGE
  - 2 - CONGRESS STREET
  - 3 - VISITOR GARAGE
  - 4 - EAST TOWER
  - 5 - CENTRAL UTILITY PLANT
  - 6 - BEAN BUILDING
  - 7 - RICHARDS BUILDING
  - 8 - MAINE GENERAL BUILDING



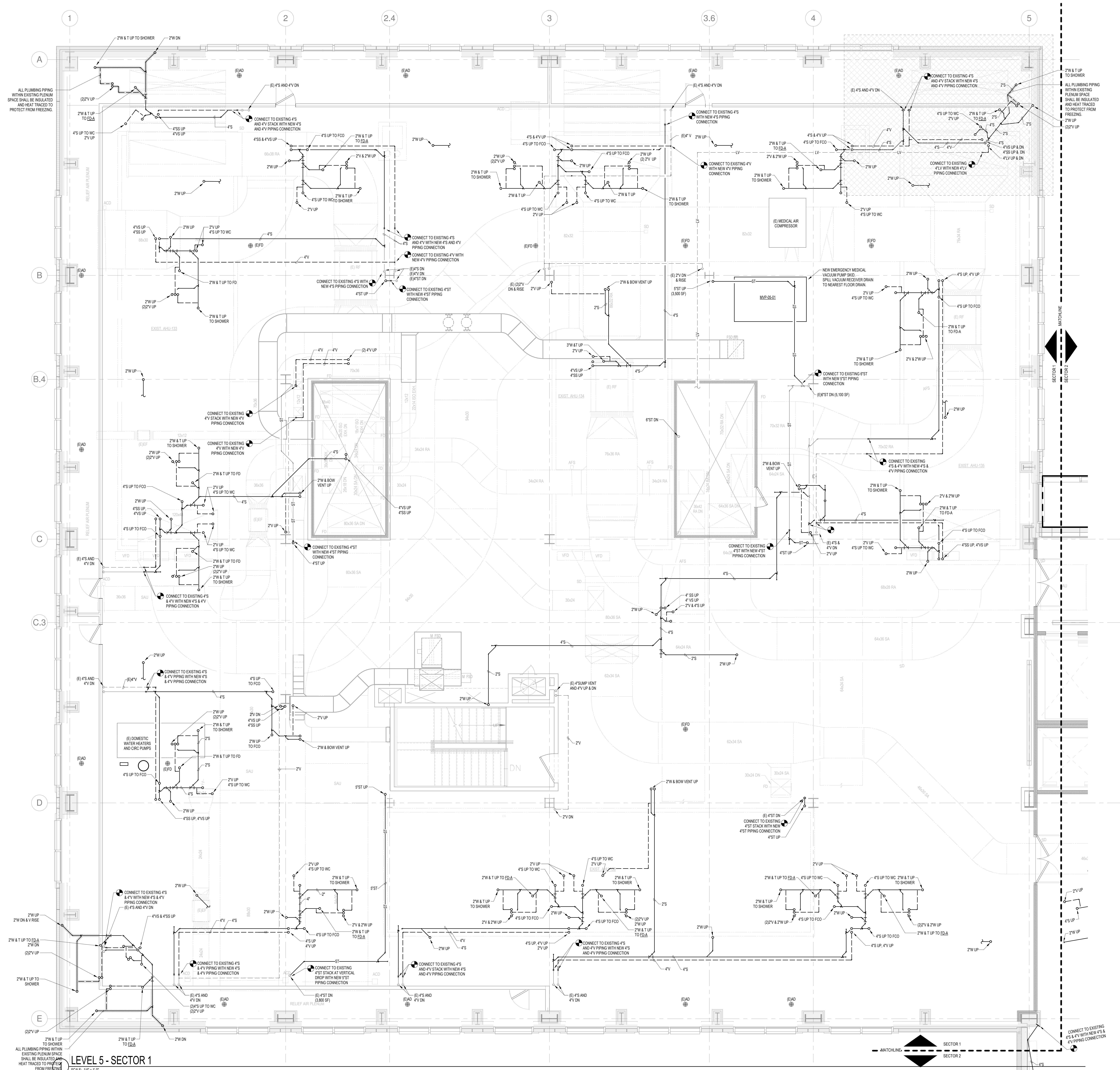
CONSTRUCTION DOCUMENTS

1	ADDENDUM NO. 1	03/22/18
NO	ISSUE	DATE
Job Number B150312-000		
Drawn	DOC	
Checked	PIR	
Approved	PIR	

TITLE  
**PLUMBING LEVEL  
 5 FLOOR  
 DRAINAGE PLAN -  
 SECTOR 1**

SHEET NUMBER

**P12-51**



LEVEL 5 - SECTOR 1  
 SCALE: 1/8" = 1'-0"

C:\Revit Local Files\_B150312\000\MDC East Tower 6&7 MEP17\_Constr\_documents\...  
 3/22/2018 11:41:40 AM