

CONSULTANTS

CIVIL/LANDSCAPE ARCHITECT
 Sebago Technics
 75 John Roberts Road, Suite
 1A, South Portland, ME 04106

STRUCTURAL/MECHANICAL/PLUMBING/CONSTRUCTION CONSULTANT
 Simpson Gumpertz & Heger Inc.
 41 Seaver Street, Building 1, 5th Fl.,
 Waltham, MA 02453

MEPP ENGINEER CODE
 AKF Group LLC
 99 Bedford Street, 2nd Floor, Boston MA 02111

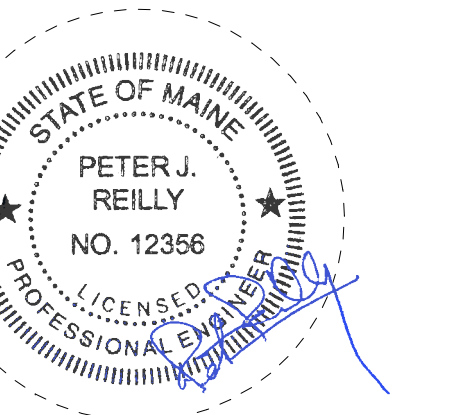
CONSTRUCTION MANAGER
 Turner Construction
 2 Seaport Lane, Suite 200, Boston, MA 02210

ELEVATOR CONSULTANT
 VDA (Van Deusen & Associates)
 101 Summer Street, 4th Floor, Boston MA,
 02110

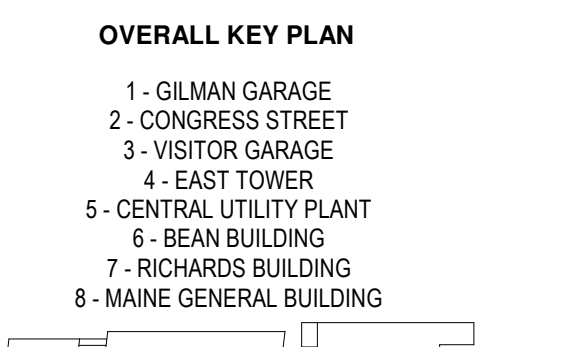
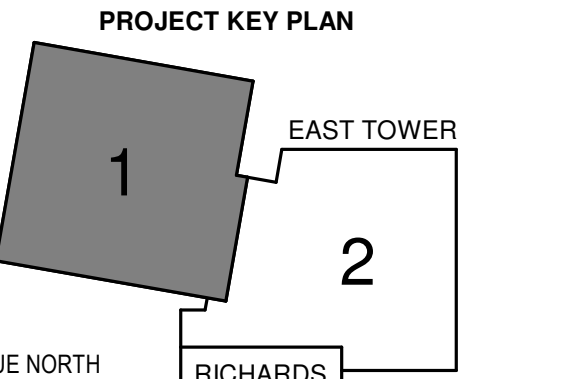
COST ESTIMATOR
 D. G. Jones International
 3 Baldwin Green Common, Suite 202, Woburn, MA 01801

PROJECT TITLE

**East Tower 6 & 7
 Addition**
 22 Bramhall Street
 Portland, ME 04102



KEY PLANS



CONSTRUCTION DOCUMENTS
 JANUARY 28, 2018

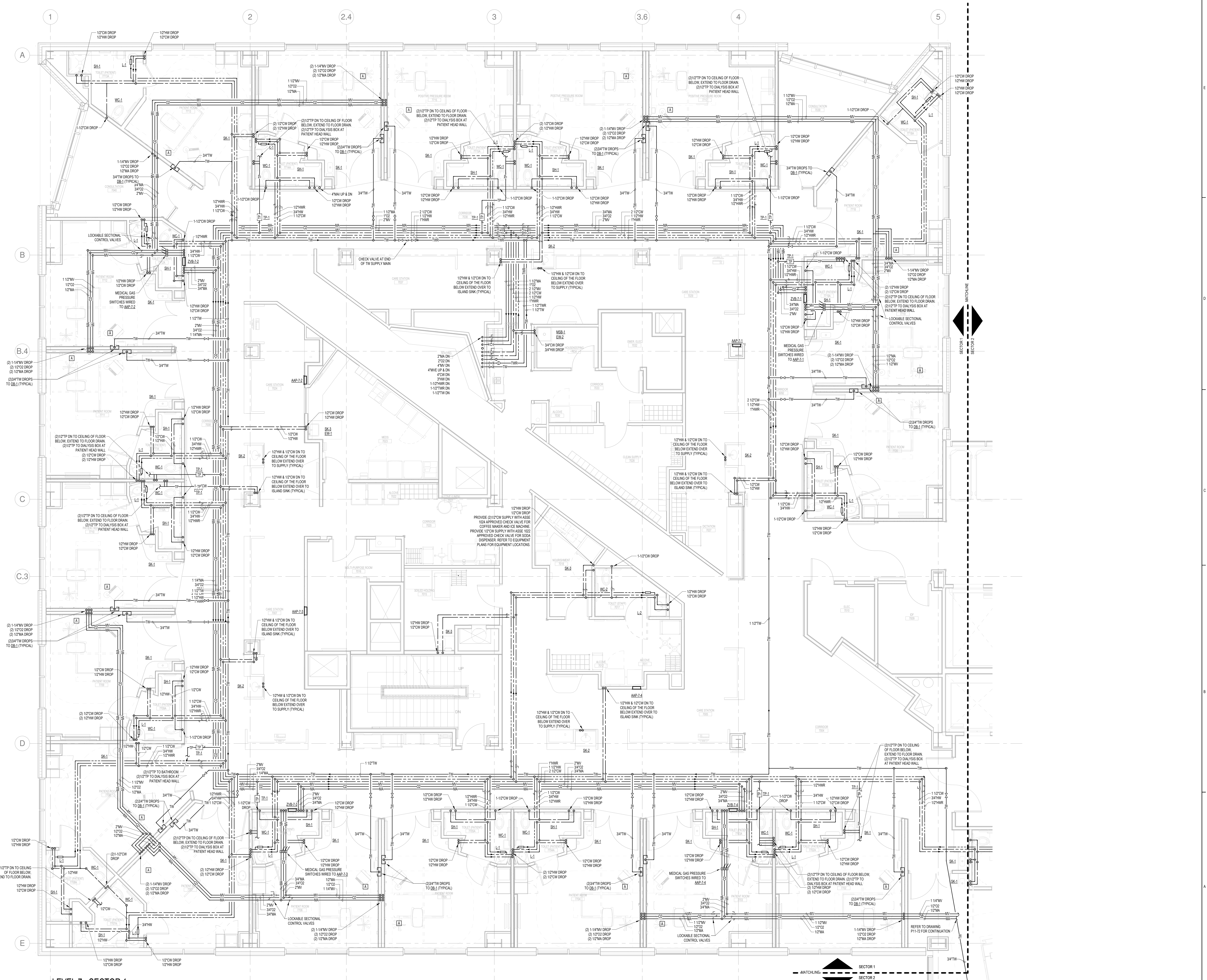
NO	ISSUE	DATE
1	ADDENDUM NO. 1	03/22/18

Job Number: B150312-000
 Drawn: DCC
 Checked: PJR
 Approved: PJR

TITLE
**PLUMBING LEVEL
 7 FLOOR SUPPLY
 PLAN - SECTOR 1**

SHEET NUMBER

P11-71



LEVEL 7 - SECTOR 1
 SCALE: 1/8\"/>

3/23/2018 11:40:23 AM
 C:\pwworking\Perkins+Will\B150312-000\MDC East Tower 6&7 MEP17_Constr_documents\