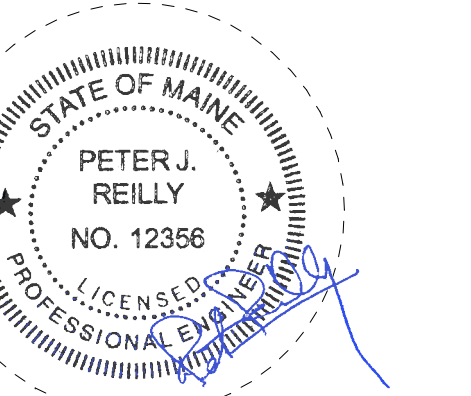


CONSULTANTS

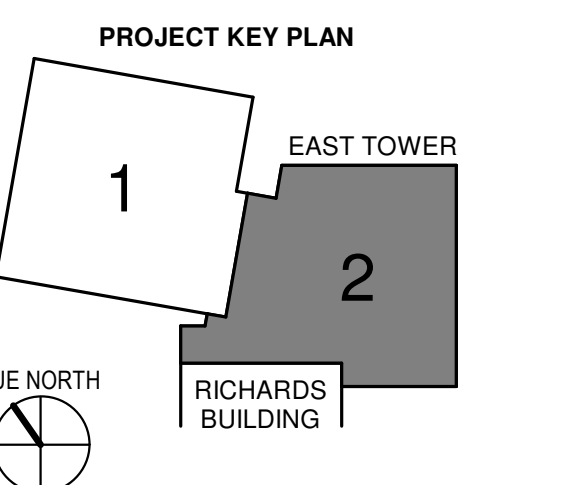
- CIVIL/LANDSCAPE ARCHITECT
Sebago Technics
 75 John Roberts Road, Suite
 1A, South Portland, ME 04106
- STRUCTURAL/ENR/BUILDING ENVELOPE CONSULTANT
Simpson Gumpertz & Hager Inc.
 41 Seyon Street, Building 1, Suite 570,
 Waltham, MA 02453
- MEP/P ENGINEER/COE
AKF Group LLC
 99 Bedford Street, 2nd Floor, Boston MA 02111
- CONSTRUCTION MANAGER
Turner Construction
 2 Seaport Lane, Suite 200, Boston, MA 02210
- ELEVATOR CONSULTANT
VDA (Van Dusen & Associates)
 101 Summer Street, 4th Floor, Boston MA
 02110
- COIT ESTIMATOR
D. G. Jones International
 3 Baldwin Green Common, Suite 202, Woburn, MA 01801

PROJECT TITLE

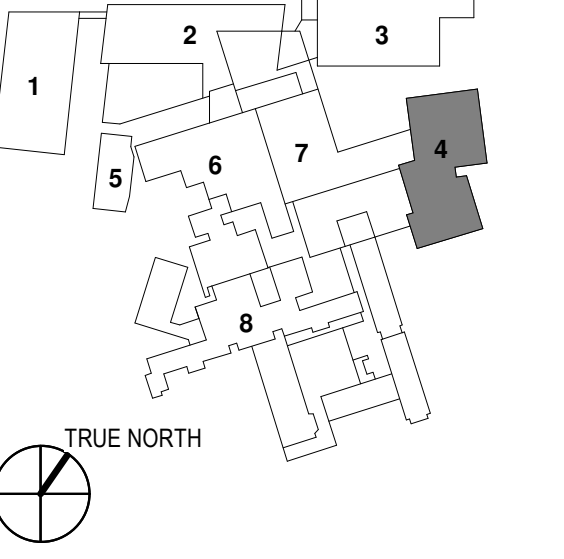
**East Tower 6 & 7
 Addition**
 22 Bramhall Street
 Portland, ME 04102



KEY PLANS



- OVERALL KEY PLAN
- 1 - GILMAN GARAGE
 - 2 - CONGRESS STREET
 - 3 - VISITOR GARAGE
 - 4 - EAST TOWER
 - 5 - CENTRAL UTILITY PLANT
 - 6 - BEAN BUILDING
 - 7 - RICHARDS BUILDING
 - 8 - MAINE GENERAL BUILDING

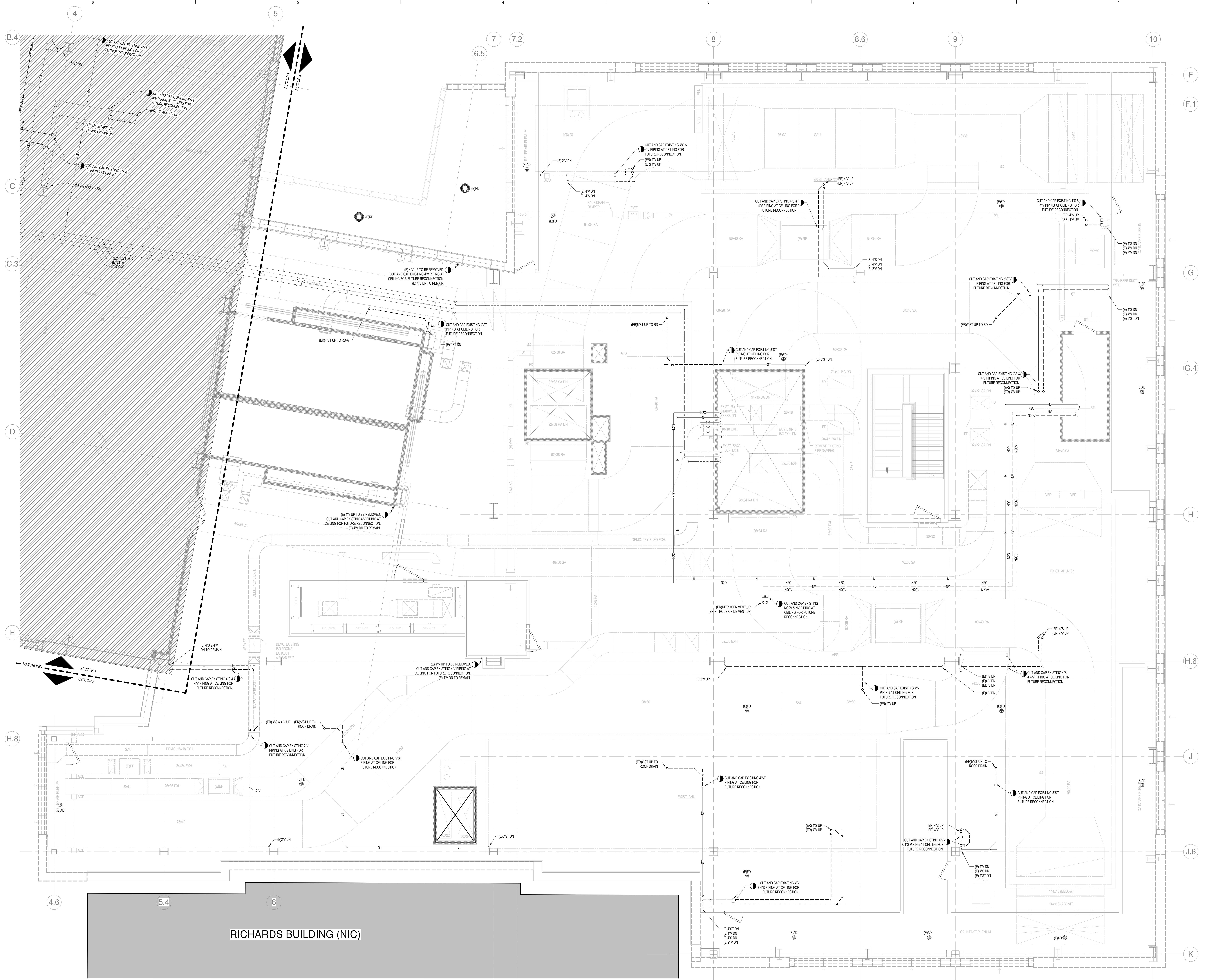


CONSTRUCTION DOCUMENTS
 JANUARY 28, 2018

NO.	ISSUE	DATE

TITLE
**PLUMBING LEVEL
 5 DEMOLITION
 FLOOR PLAN -
 SECTOR 2**

SHEET NUMBER
P04-52



1 LEVEL 5 - SECTOR 2
 SCALE: 1/4" = 1'-0"

RICHARDS BUILDING (NIC)

C:\Revit Local Files_B15015000\MDC East Tower 6&7 MEP17_Constr_documents.rvt
 3/28/2018 11:37:06 AM