

CONSULTANTS

CIVIL/LANDSCAPE ARCHITECT  
**Sebago Technics**  
 75 John Roberts Road, Suite  
 1A, South Portland, ME 04106

STRUCTURAL/ENR/BUILDING ENVELOPE CONSULTANT  
**Simpson Gumpertz & Hager Inc.**  
 41 Seaver Street, Building 1, Suite 570,  
 Waltham, MA 02453

MEP/ELECTRICAL ENGINEER  
**AKF Group LLC**  
 99 Bedford Street, 2nd Floor, Boston, MA 02111

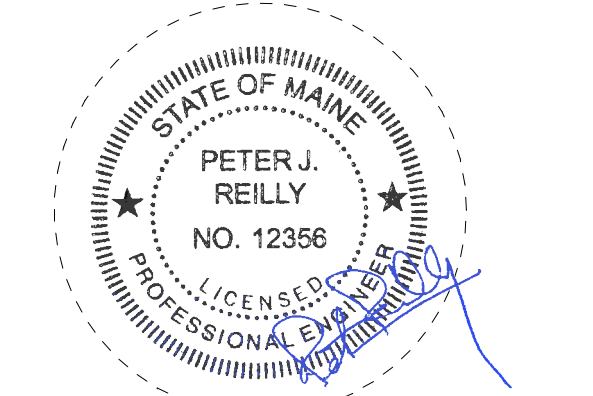
CONSTRUCTION MANAGER  
**Turner Construction**  
 2 Seaport Lane, Suite 200, Boston, MA 02210

ELEVATOR CONSULTANT  
**VDA (Van Deusen & Associates)**  
 101 Summer Street, 4th Floor, Boston, MA  
 02110

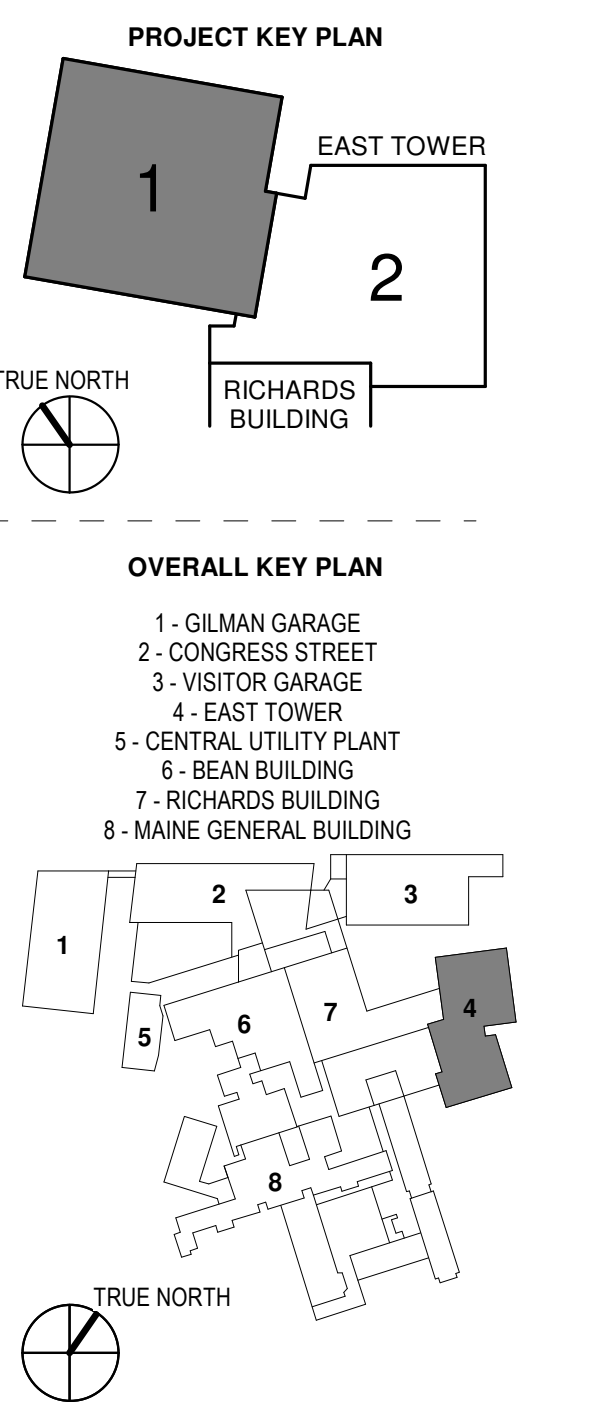
COST ESTIMATOR  
**D. G. Jones International**  
 3 Baldwin Green Common, Suite 202, Woburn, MA 01801

PROJECT TITLE

**East Tower 6 & 7  
 Addition**  
 22 Bramhall Street  
 Portland, ME 04102



KEY PLANS

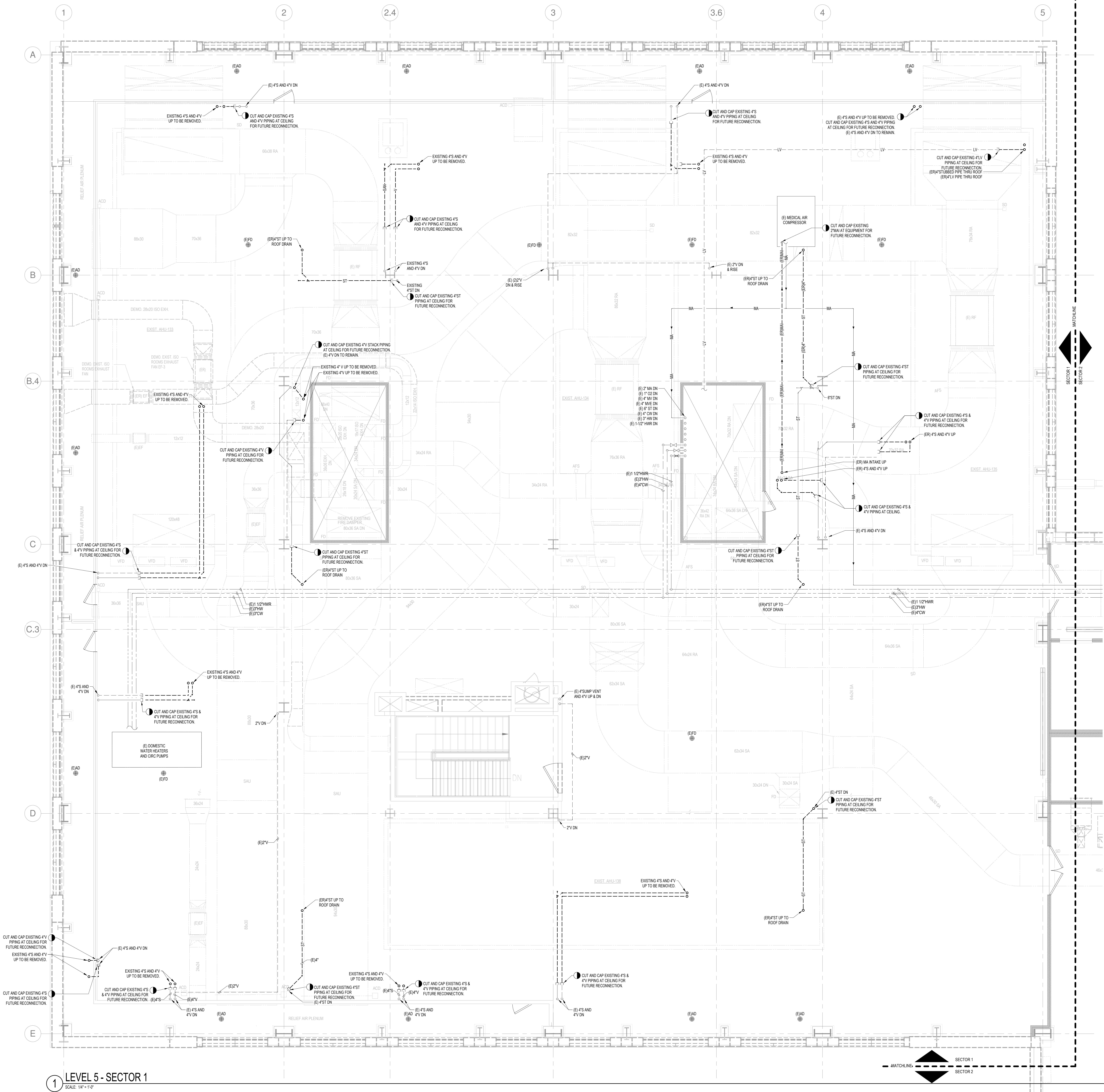


CONSTRUCTION DOCUMENTS  
 JANUARY 28, 2018

NO	ISSUE	DATE
Job Number	B150312-000	
Drawn	DOC	
Checked	PLR	
Approved	PLR	

TITLE  
**PLUMBING LEVEL  
 5 DEMOLITION  
 FLOOR PLAN -  
 SECTOR 1**

SHEET NUMBER  
**P04-51**



**LEVEL 5 - SECTOR 1**  
 SCALE: 1/4" = 1'-0"

C:\Revit Local Files\_B150312000\MDC East Tower 6&7 MEP17\_Constr\_documents.rvt  
 3/29/2018 11:30:43 AM