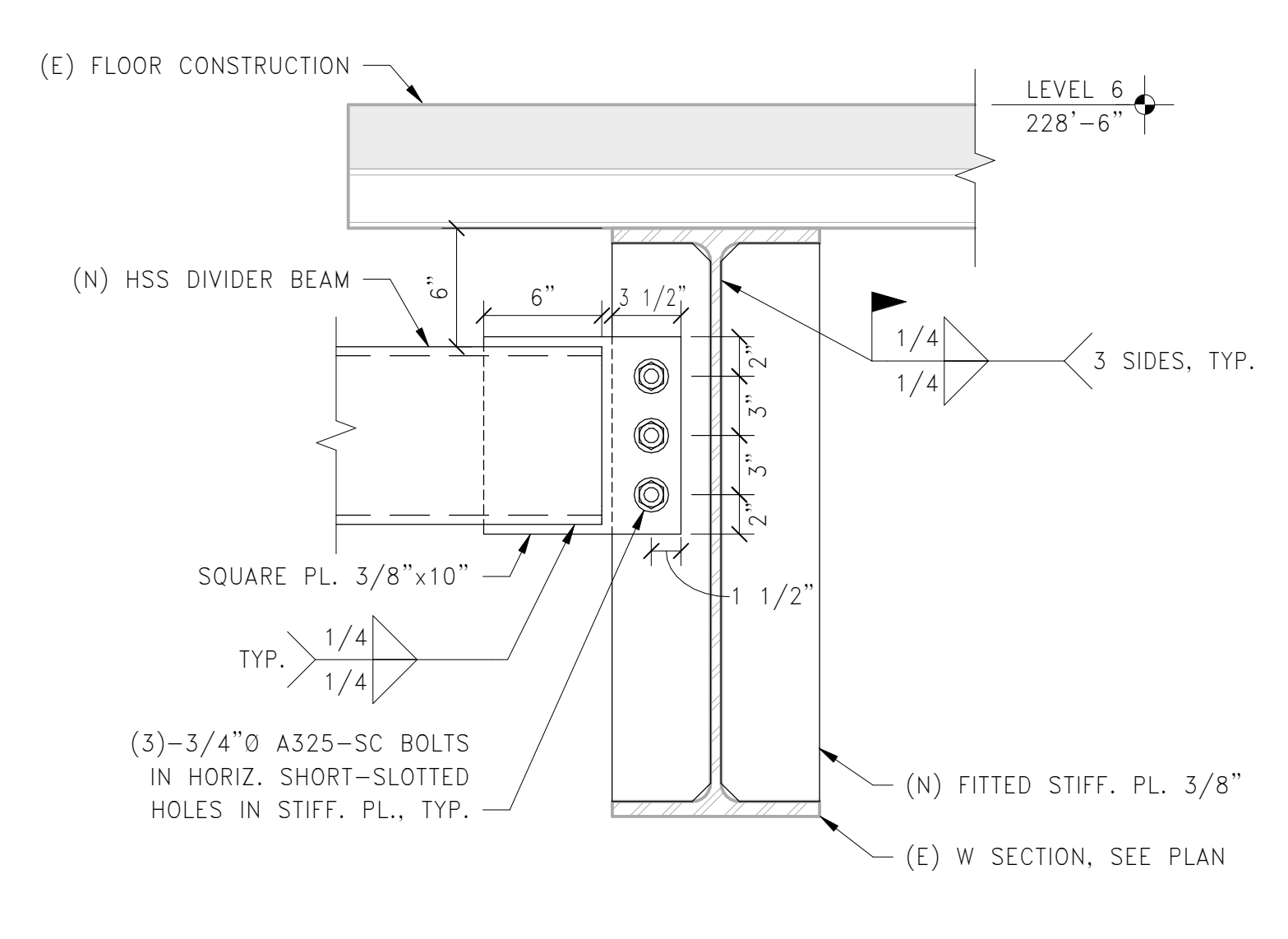


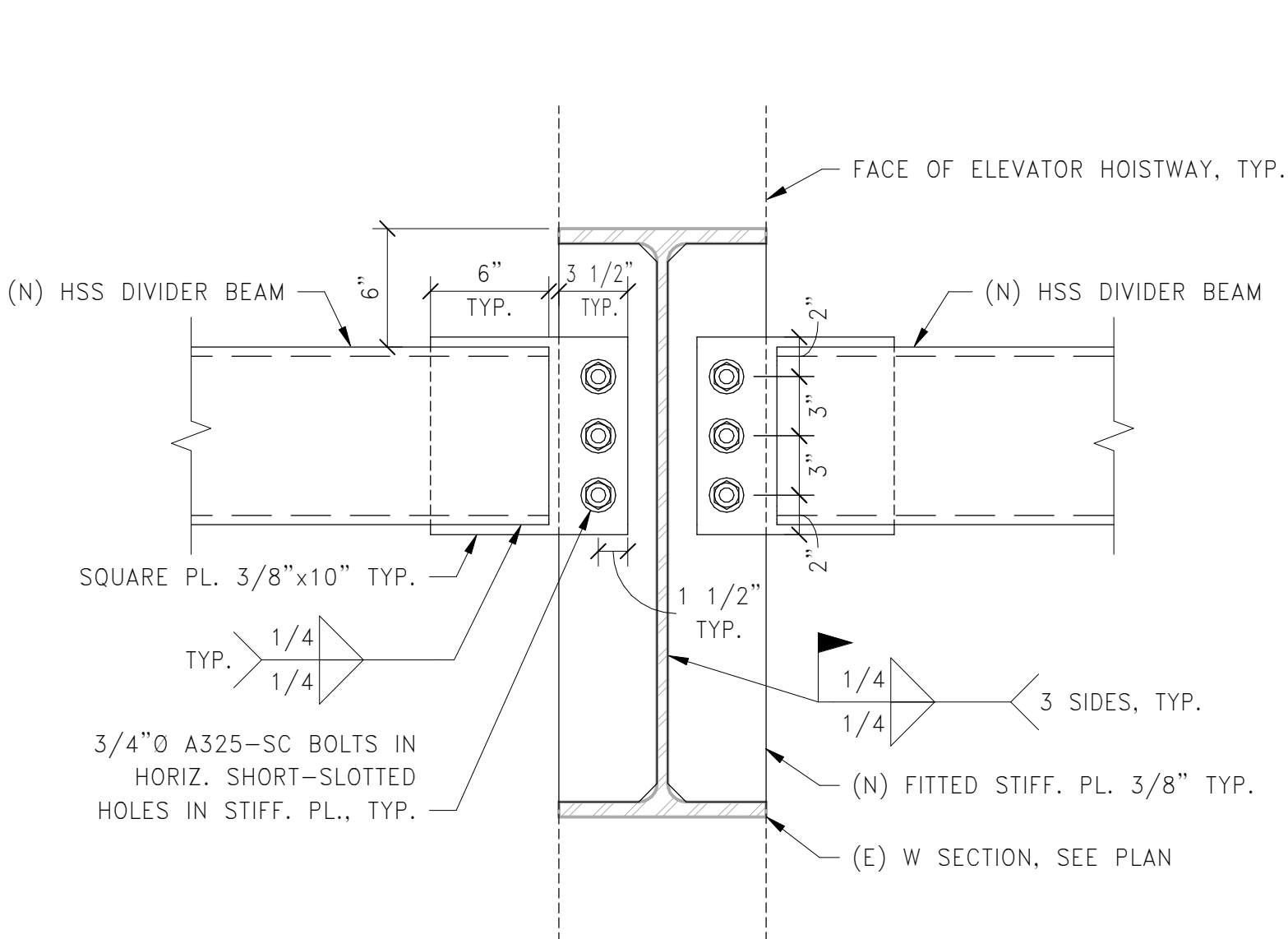
11 SECTION: LEVEL 5 NOTCHED BEAM
1 1/2" = 1'-0"

10 NOT USED
1 1/2" = 1'-0"

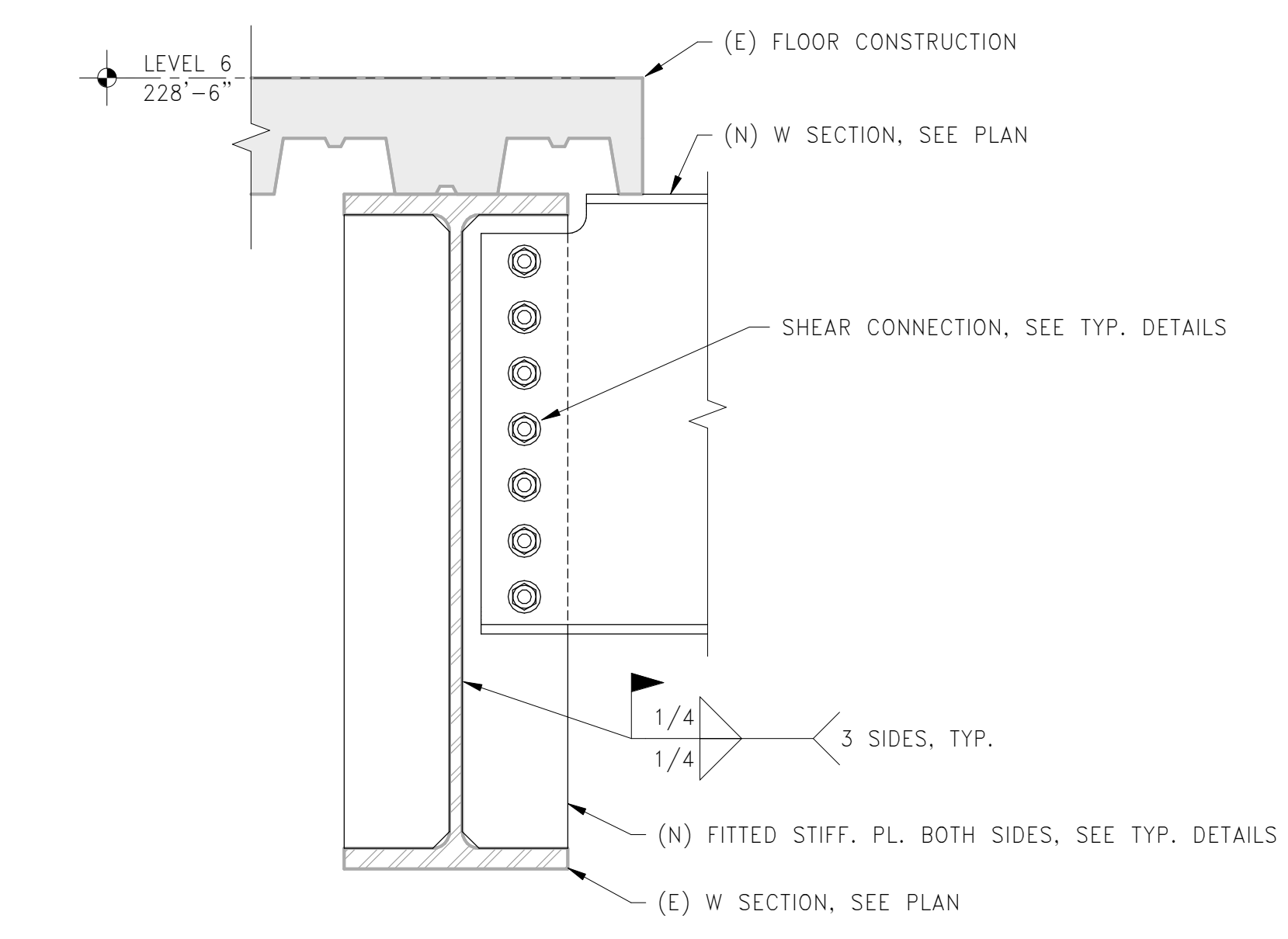
NOT USED



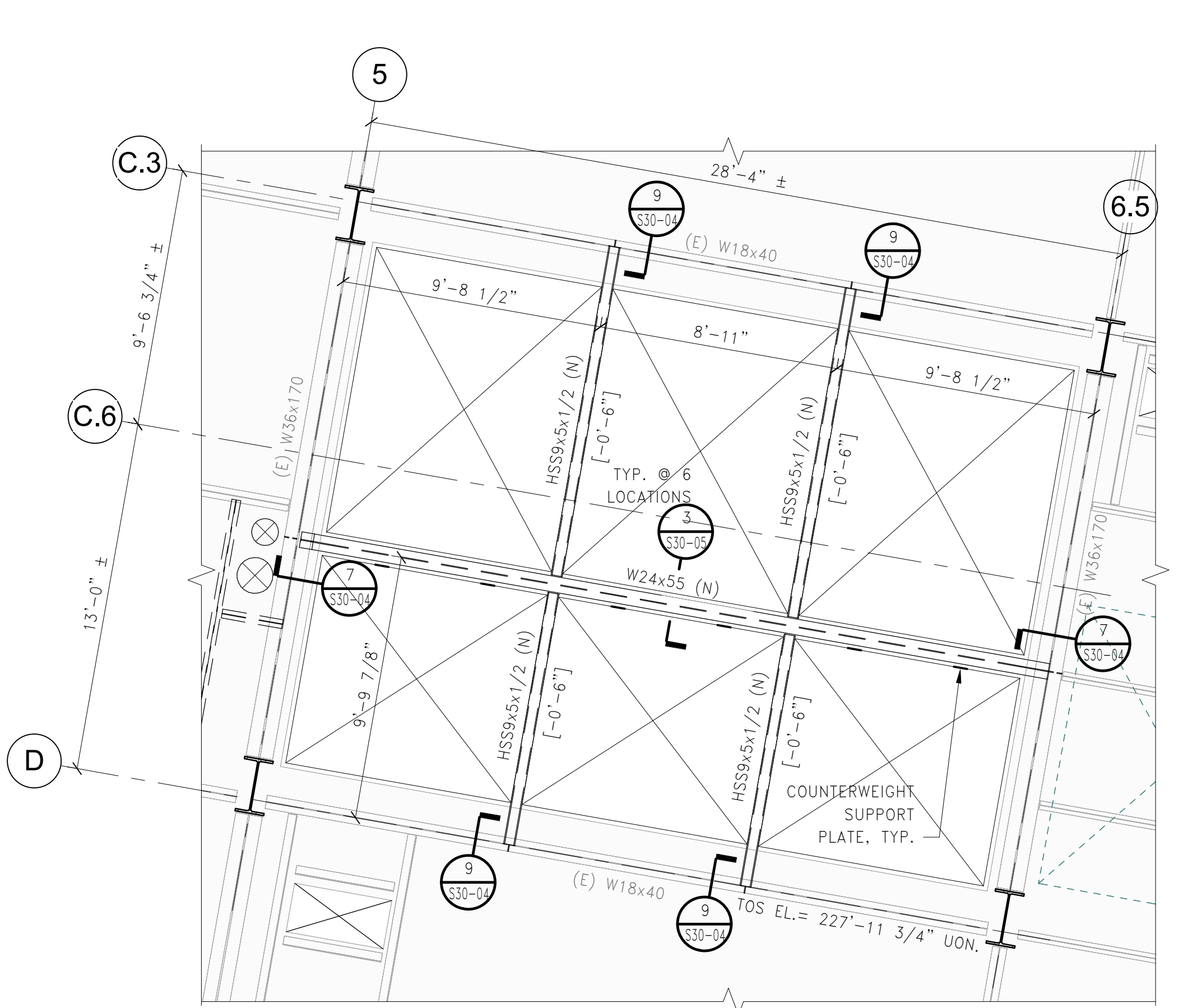
9 SECTION: TYPICAL (N) HSS TO (E) BEAM CONNECTION
1 1/2" = 1'-0"



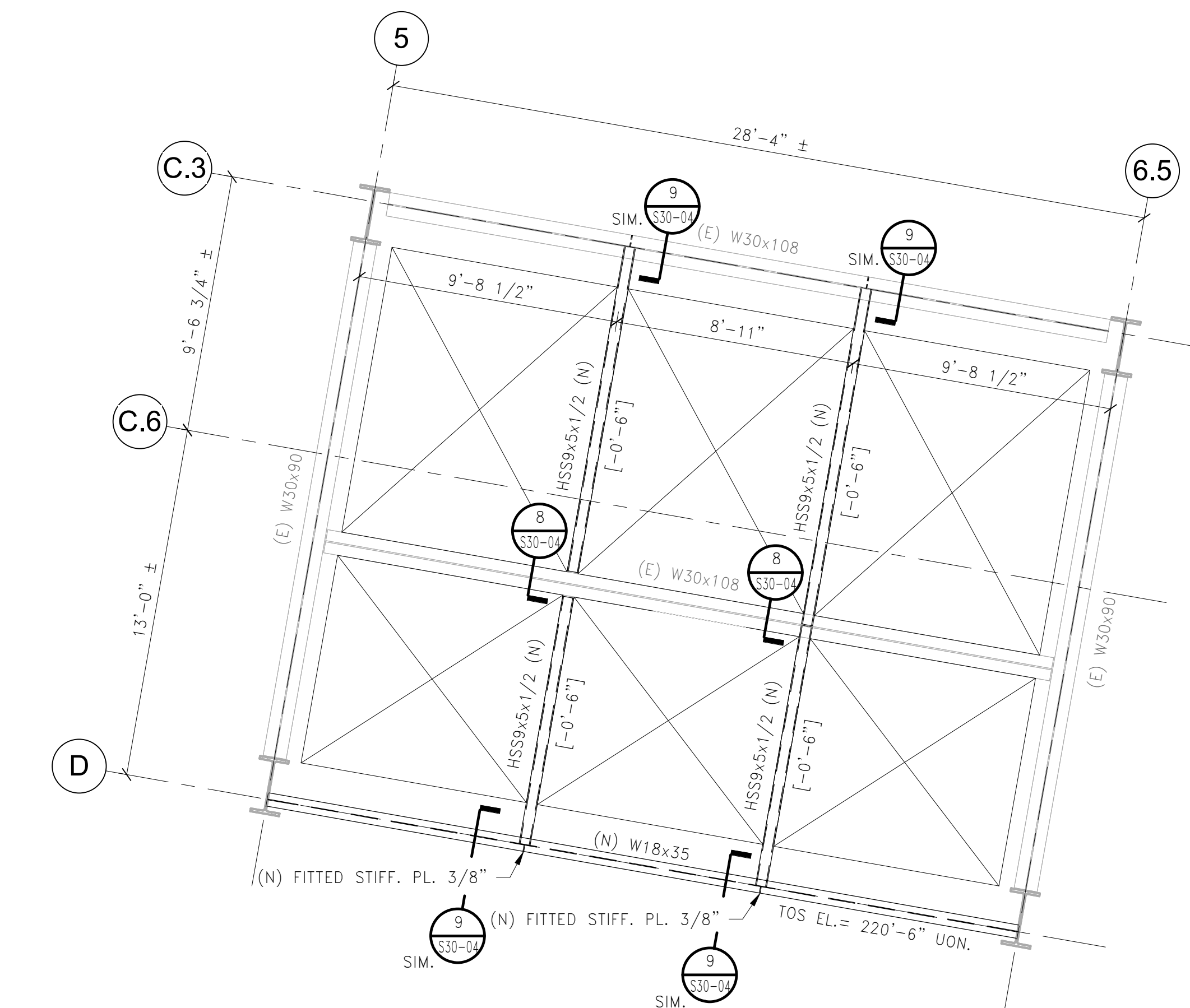
8 SECTION: TYPICAL (N) HSS TO (E) BEAM CONNECTION
1 1/2" = 1'-0"



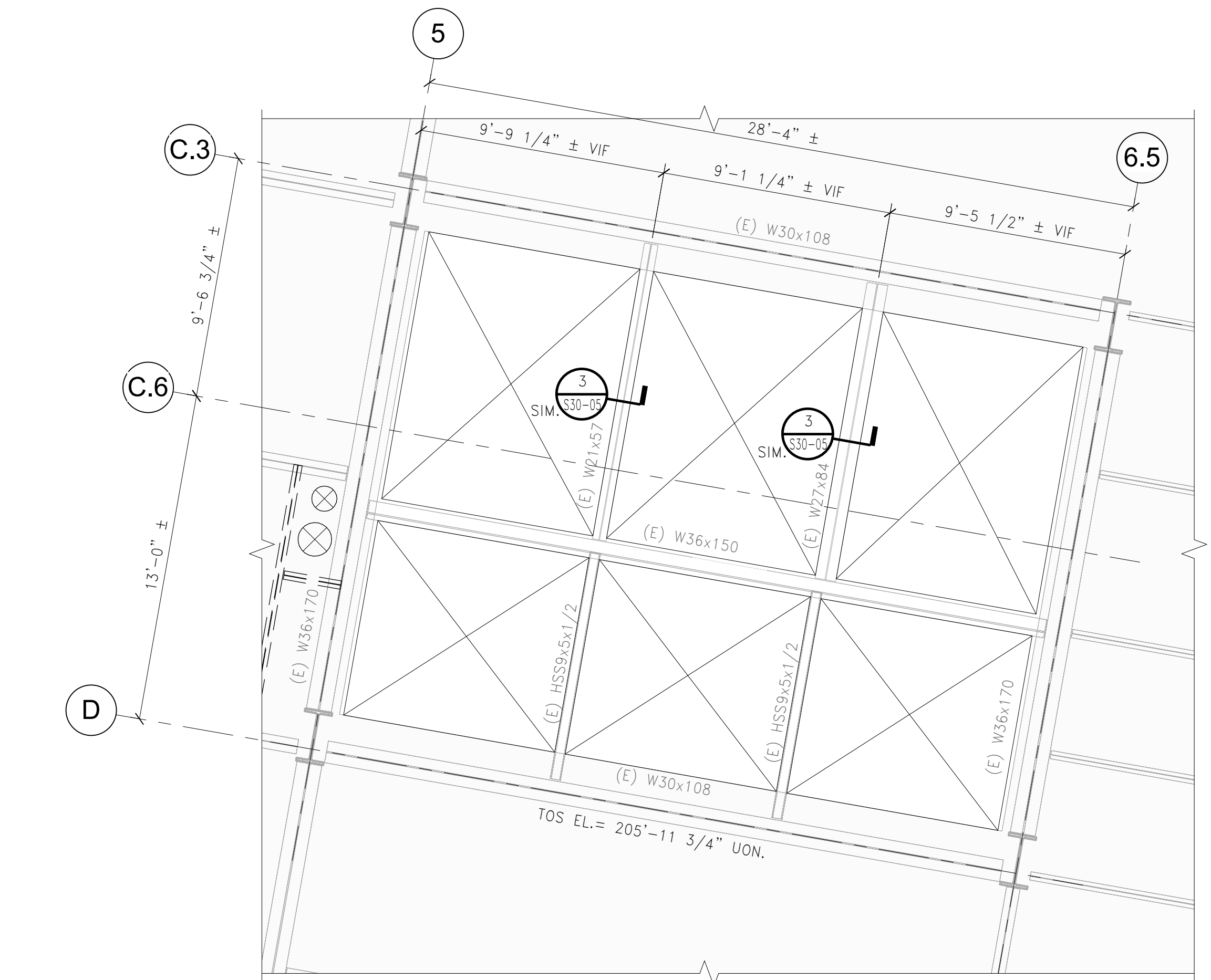
7 SECTION: (N) BEAM TO (E) BEAM CONNECTION
1 1/2" = 1'-0"



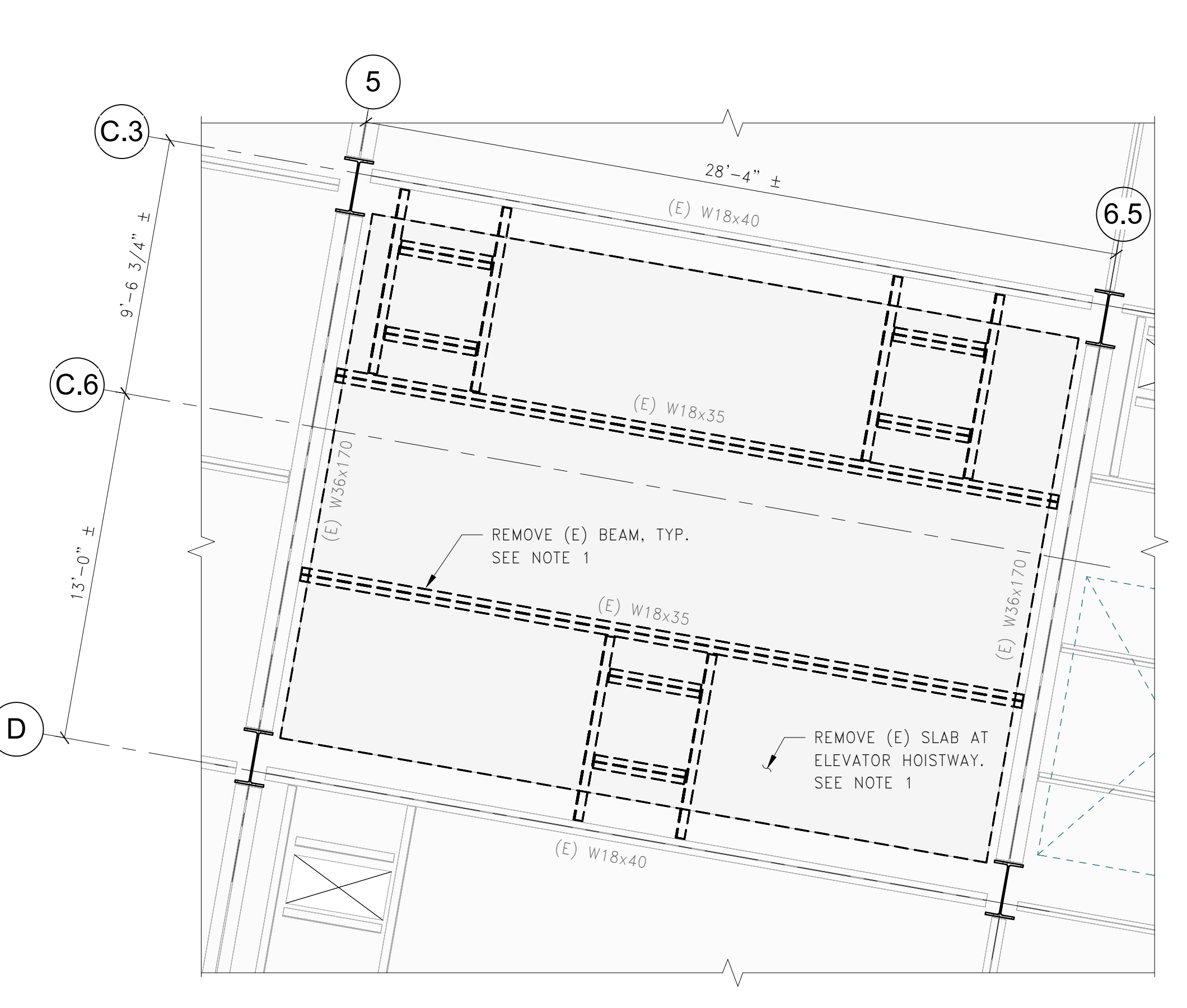
6 PART PLAN: LEVEL 6 ELEVATOR HOISTWAY NEW CONSTRUCTION
1/4" = 1'-0"



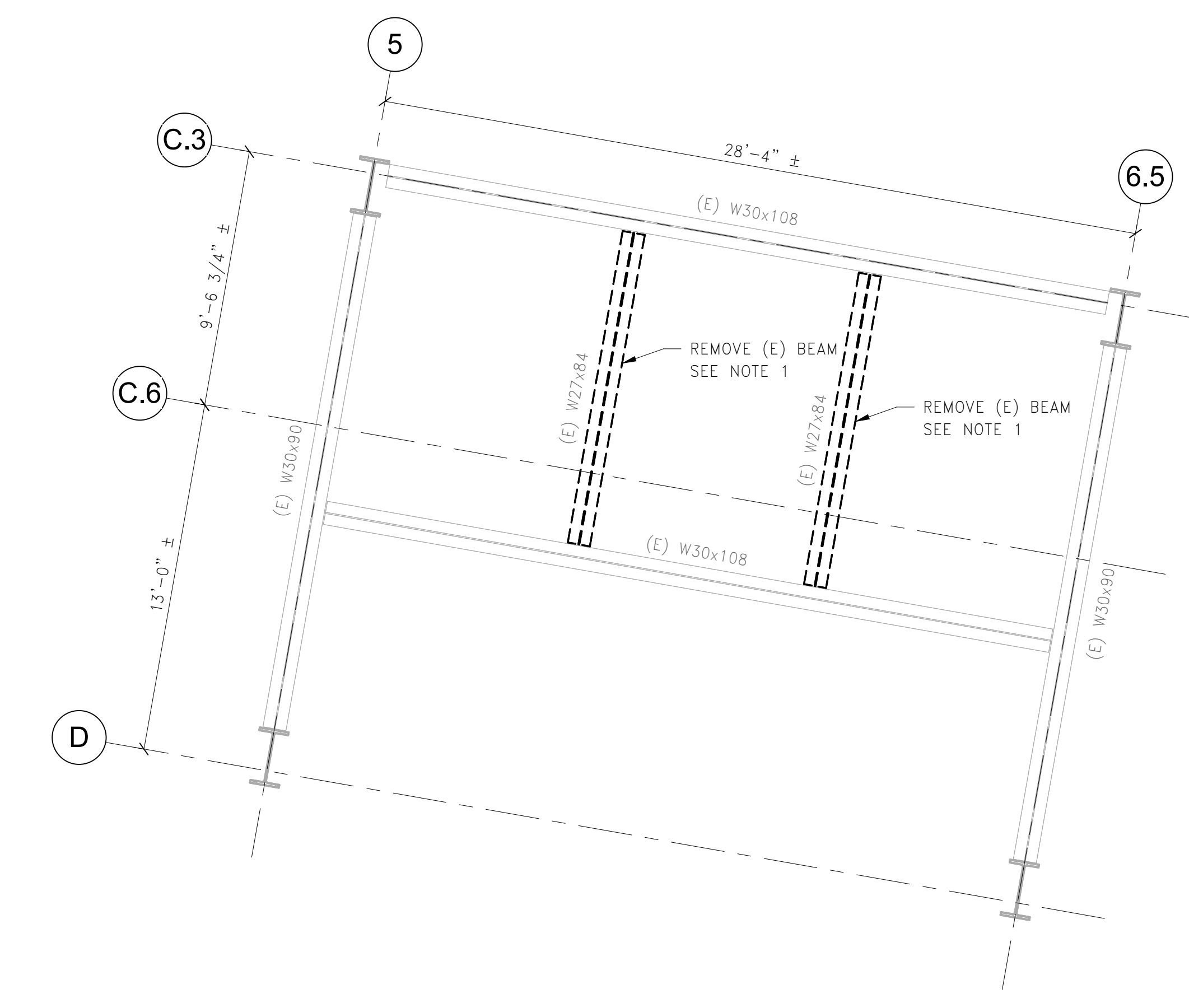
5 PART PLAN: LEVEL 5 MEZZANINE ELEVATOR HOISTWAY NEW CONSTRUCTION
1/4" = 1'-0"



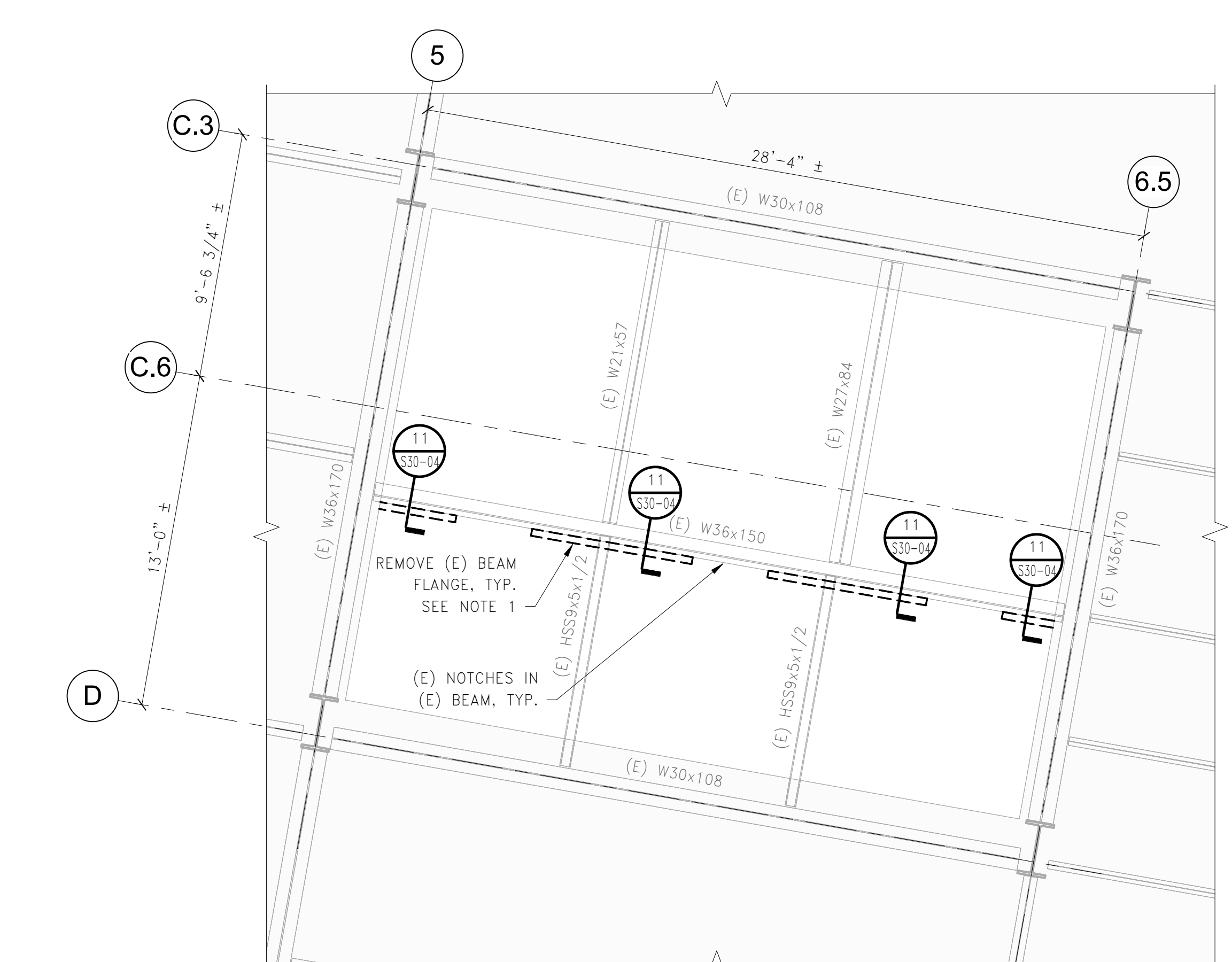
4 PART PLAN: LEVEL 5 ELEVATOR HOISTWAY NEW CONSTRUCTION
1/4" = 1'-0"



3 PART PLAN: LEVEL 6 ELEVATOR HOISTWAY SELECTIVE DEMOLITION
1/4" = 1'-0"



2 PART PLAN: LEVEL 5 MEZZANINE ELEVATOR HOISTWAY SELECTIVE DEMOLITION
1/4" = 1'-0"



1 PART PLAN: LEVEL 5 ELEVATOR HOISTWAY SELECTIVE DEMOLITION
1/4" = 1'-0"

PERKINS + WILL
225 Franklin Street, Suite 1100
Boston, MA 02110
617.478.0300
F&T 478.0321
www.perkinswill.com

CLIENT
Maine Medical Center
MaineHealth
Maine Medical Center
22 Bramhall Street
Portland, ME 04102

CONSULTANTS
CIVIL/LANDSCAPE ARCHITECT
Segbo Technics
75 John Roberts Road, Suite 1A, South Portland, ME 04106
STRUCTURAL/ENR/BUILDING ENVELOPE CONSULTANT
Stinson Gumpertz & Hager Inc.
41 Seyon Street, Building 1, Suite 570
Waltham, MA 02453
MEFP ENGINEER CODE
AKF Group LLC
99 Bedford Street, 2nd Floor, Boston MA 02111
CONSTRUCTION MANAGER
TURNER CONSTRUCTION
2 Seaport Lane, Suite 200, Boston, MA 02210
ELEVATOR CONSULTANT
VDA (Van Deusen & Associates)
101 Summer Street, 4th Floor, Boston MA 02110
COST ESTIMATOR
D.G. JONES INTERNATIONAL
3 Baldwin Green Common, Suite 202, Woburn, MA 01801

PROJECT TITLE
East Tower 6 & 7 Addition
22 Bramhall Street
Portland, ME 04102

KEY PLANS
PROJECT KEY PLAN
TRUE NORTH
EAST TOWER
RICHARDS BUILDING

OVERALL KEY PLAN
1- GILMAN GARAGE
2- CONGRESS STREET
3- VISITOR GARAGE
4- EAST TOWER
5- CENTRAL UTILITY PLANT
6- SEAN BUILDING
7- RICHARDS BUILDING
8- MAINE GENERAL BUILDING

CONSTRUCTION DOCUMENTS
JANUARY 28, 2018

NO.	ISSUE	DATE
Job Number	152181.000	
Drawn	REE	
Checked	BAIT	
Approved	JHT	

TITLE
STEEL DETAILS
SHEET NUMBER
S30-04
Copyright © 2017 Perkins+Will