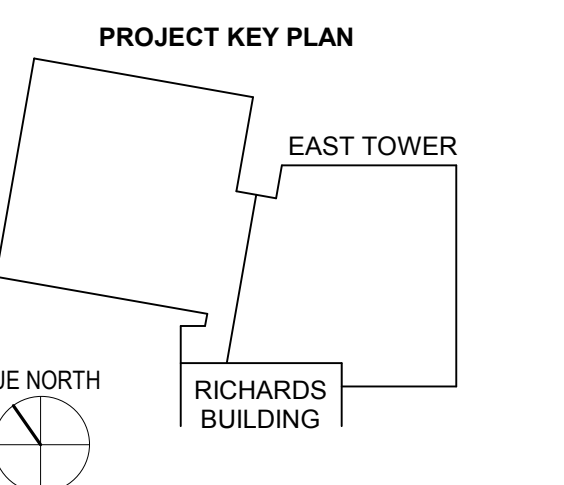
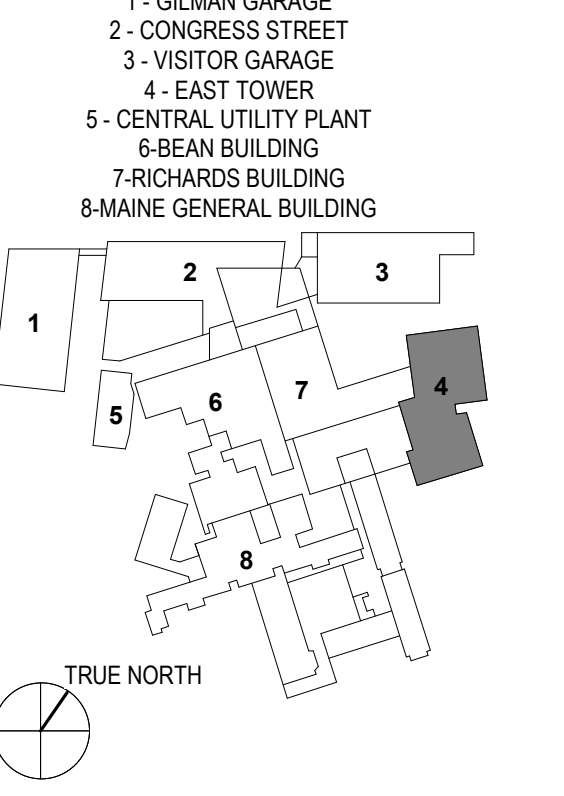


KEY PLANS



OVERALL KEY PLAN



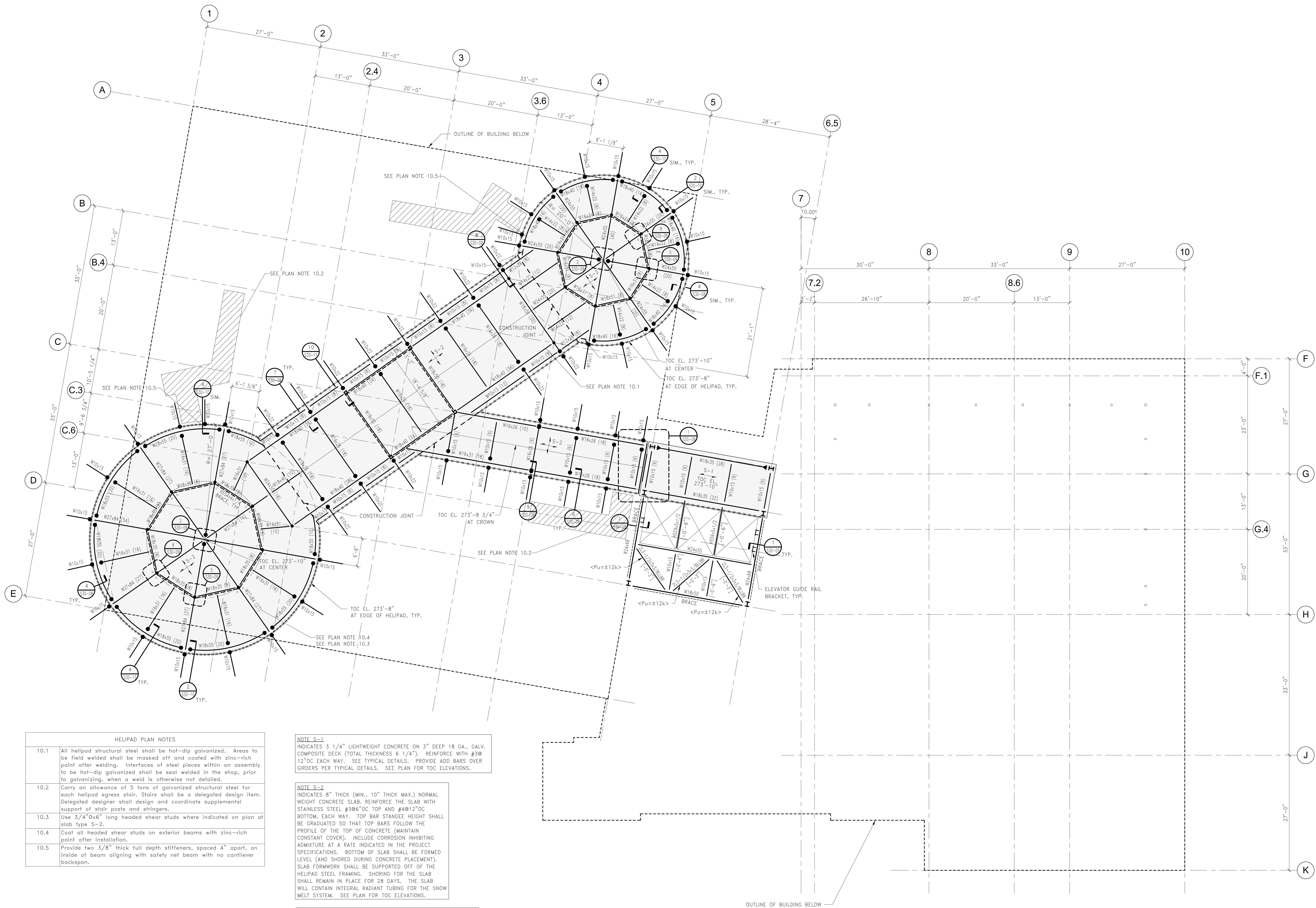
CONSTRUCTION DOCUMENTS
 JANUARY 28, 2018

1	ADDENDUM 1	03.22.18
NO	ISSUE	DATE
Job Number	152181.000	
Drawn	REE	
Checked	BMH	
Approved	JHT	

TITLE
**FRAMING PLAN
 HELIPAD**

SHEET NUMBER

S10-90



HELIPAD PLAN NOTES

10.1	All helipad structural steel shall be hot-dip galvanized. Areas to be field welded shall be masked off and coated with zinc-rich paint after welding. Interfaces of steel pieces within an assembly to be hot-dip galvanized shall be seal welded in the shop, prior to galvanizing, when a weld is otherwise not detailed.
10.2	Carry an allowance of 5 tons of galvanized structural steel for each helipad egress stair. Stairs shall be a delegated design item. Delegated designer shall design and coordinate supplemental support of stair posts and stringers.
10.3	Use 3/4"x6" long headed shear studs where indicated on plan at slab type S=2.
10.4	Coat all headed shear studs on exterior beams with zinc-rich paint after installation.
10.5	Provide two 3/8" thick full depth stiffeners, spaced 4" apart, on inside of beam aligning with safety net beam with no cantilever backspan.

NOTE S=1
 INDICATES 3 1/4" LIGHTWEIGHT CONCRETE ON 3" DEEP 18 GA., GALV. COMPOSITE DECK (TOTAL THICKNESS 6 1/4"). REINFORCE WITH #39 12"OC EACH WAY. SEE TYPICAL DETAILS. PROVIDE ADD BARS OVER GIRDERS PER TYPICAL DETAILS. SEE PLAN FOR TOC ELEVATIONS.

NOTE S=2
 INDICATES 8" THICK (MIN., 10" THICK MAX.) NORMAL WEIGHT CONCRETE SLAB. REINFORCE THE SLAB WITH STAINLESS STEEL #396"OC TOP AND #4012"OC BOTTOM, EACH WAY. TOP BAR STANDEE HEIGHT SHALL BE GRADUATED SO THAT TOP BARS FOLLOW THE PROFILE OF THE TOP OF CONCRETE (MAINTAIN CONSTANT COVER). INCLUDE CORROSION INHIBITING ADMIXTURE AT A RATE INDICATED IN THE PROJECT SPECIFICATIONS. BOTTOM OF SLAB SHALL BE FORMED LEVEL (AND SHORED DURING CONCRETE PLACEMENT). SLAB FORMWORK SHALL BE SUPPORTED OFF OF THE HELIPAD STEEL FRAMING. SHORING FOR THE SLAB SHALL REMAIN IN PLACE FOR 28 DAYS. THE SLAB WILL CONTAIN INTEGRAL RADIANT TUBING FOR THE SNOW MELT SYSTEM. SEE PLAN FOR TOC ELEVATIONS.

SLAB EDGE LINWORK KEY:
 - - - - - INDICATES BENT PLATE WITH #4 WELDED THREADED BAR COUPLERS. REFER TO TYPICAL DETAIL 2/S00-24