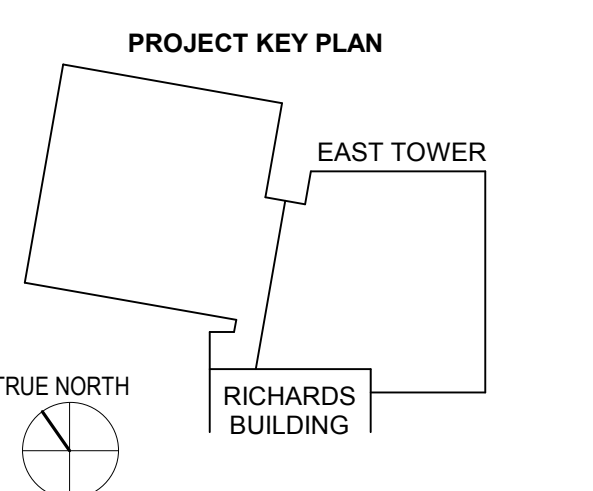
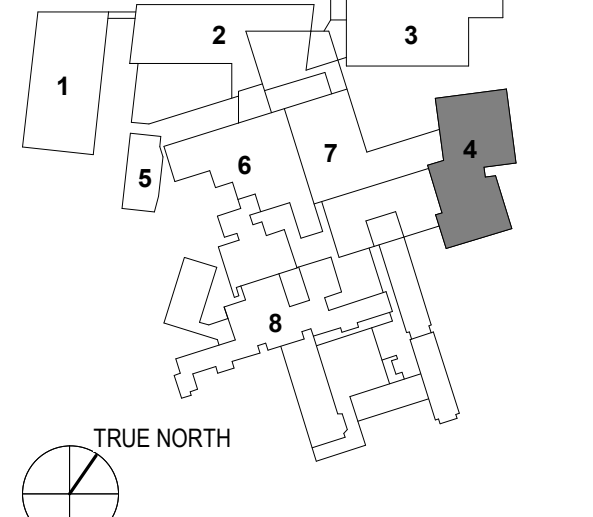


KEY PLANS



- OVERALL KEY PLAN
1. GILMAN GARAGE
 2. CONGRESS STREET
 3. VISITOR GARAGE
 4. EAST TOWER
 5. CENTRAL UTILITY PLANT
 6. SEAR BUILDING
 7. RICHARDS BUILDING
 8. MAINE GENERAL BUILDING



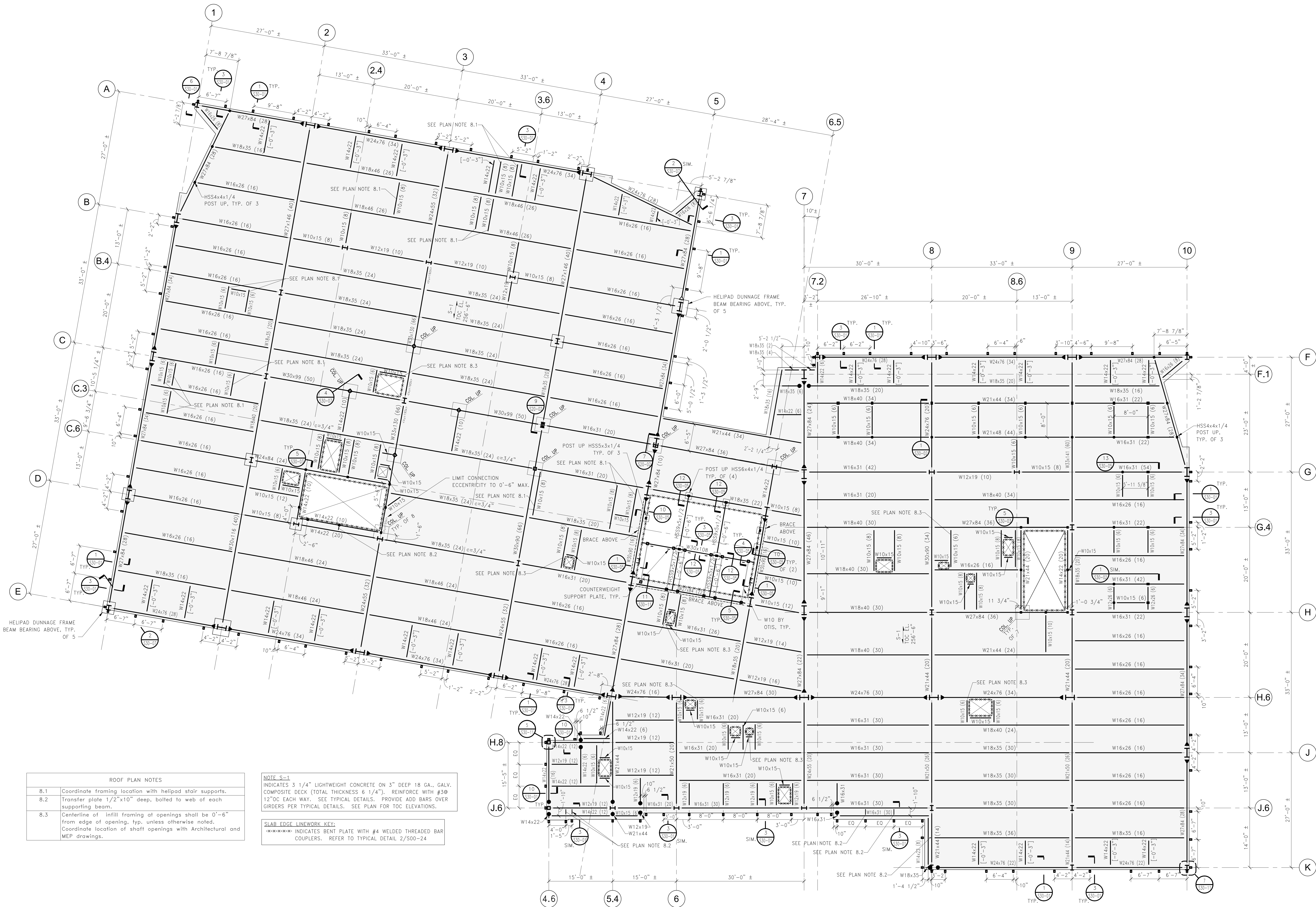
CONSTRUCTION DOCUMENTS
 JANUARY 28, 2018

2	ADDENDUM 2	03.29.18
1	ADDENDUM 1	03.22.18
NO.	ISSUE	DATE
Job Number	152181.000	
Drawn	REE	
Checked	BMT	
Approved	JHT	

TITLE
FRAMING PLAN ROOF

SHEET NUMBER

S10-80



- ROOF PLAN NOTES
- 8.1 Coordinate framing location with helipad stair supports.
 - 8.2 Transfer plate 1/2"x10" deep, bolted to web of each supporting beam. SEE TYPICAL DETAILS. PROVIDE ADD BARS OVER ORDERS PER TYPICAL DETAILS. SEE PLAN FOR TOC ELEVATIONS.
 - 8.3 Centerline of infill framing at openings shall be 0'-6" from edge of opening, typ. unless otherwise noted. Coordinate location of shaft openings with Architectural and MEP drawings.

- NOTE S-1
 INDICATES 3 1/4" LIGHTWEIGHT CONCRETE ON 3" DEEP 18 GA. GALV. COMPOSITE DECK (TOTAL THICKNESS 6 1/4"). REINFORCE WITH #3@ 12"OC EACH WAY. SEE TYPICAL DETAILS. PROVIDE ADD BARS OVER ORDERS PER TYPICAL DETAILS. SEE PLAN FOR TOC ELEVATIONS.
- SLAB EDGE LINWORK KEY:
 ***** INDICATES BENT PLATE WITH #4 WELDED THREADED BAR COUPLERS. REFER TO TYPICAL DETAIL 2/S00-24

ROOF FRAMING PLAN
 1/8" = 1'-0"

3/29/2018 9:20:12 AM I:\SS\Projects\2017\15093_S10\LMC\Drawings\Working_Sets\17\LOCAL_USER\PERKINS+WILL\SS10\LMC-EAST TOWER\017_STRUCT-REBEWANT