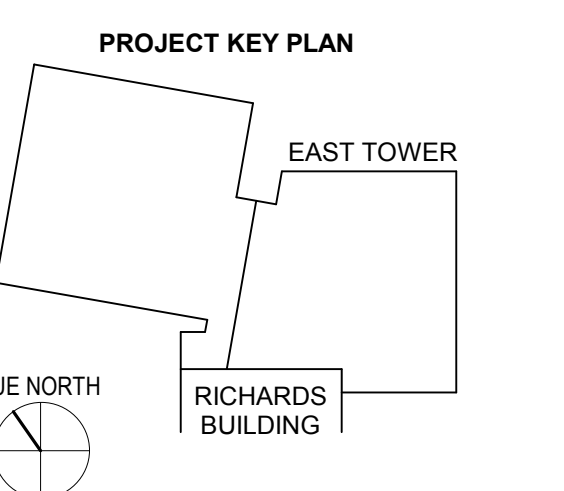
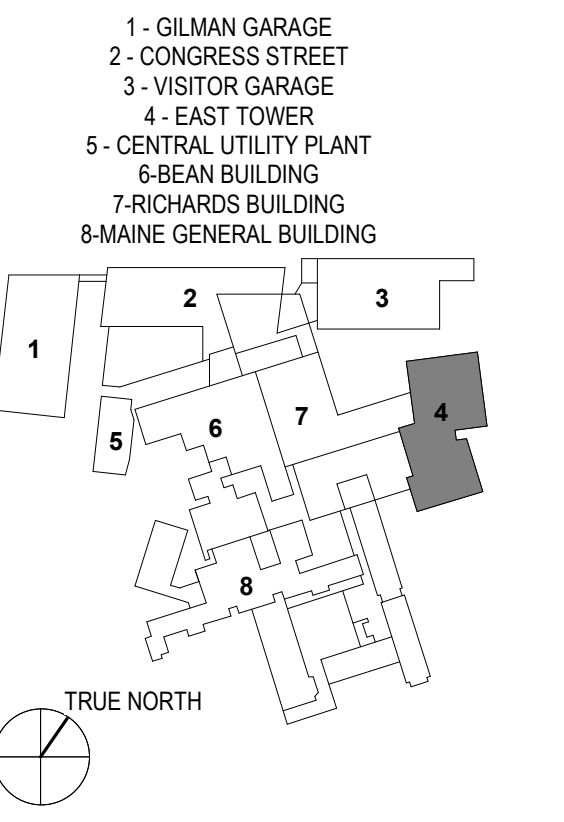


KEY PLANS



OVERALL KEY PLAN



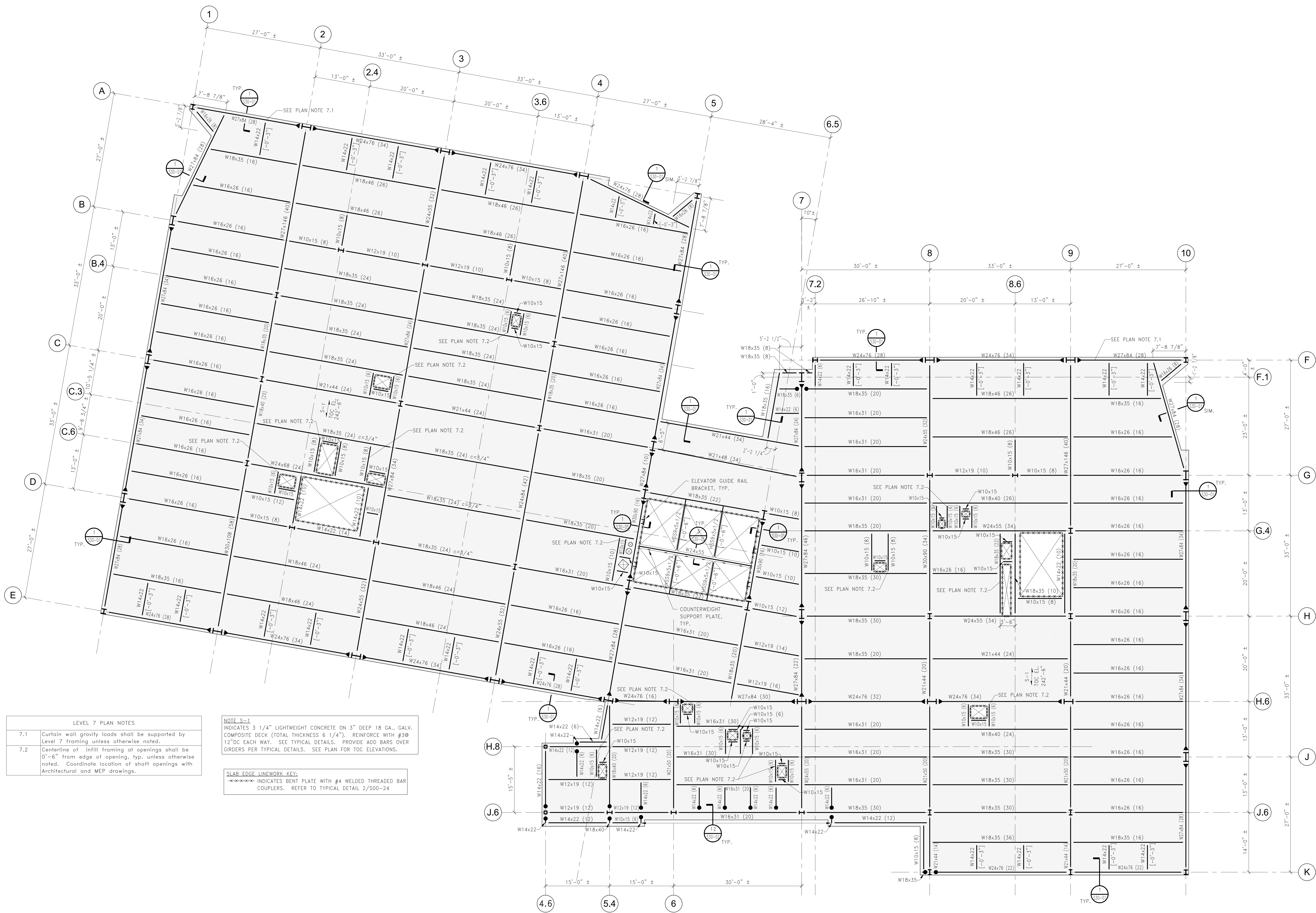
CONSTRUCTION DOCUMENTS
 JANUARY 28, 2018

1	ADDENDUM 1	03/22/18
NO	ISSUE	DATE
Job Number	152181.000	
Drawn	REE	
Checked	BMJ	
Approved	JHT	

TITLE
**FRAMING PLAN
 LEVEL 7**

SHEET NUMBER

S10-70



LEVEL 7 PLAN NOTES

7.1	Curtain wall gravity loads shall be supported by Level 7 framing unless otherwise noted.
7.2	Centerline of infill framing at openings shall be 0'-6" from edge of opening, typ. unless otherwise noted. Coordinate location of shaft openings with Architectural and MEP drawings.

NOTE S-1
 INDICATES 3 1/4" LIGHTWEIGHT CONCRETE ON 3" DEEP 18 GA. GALV. COMPOSITE DECK (TOTAL THICKNESS 6 1/4"). REINFORCE WITH #3@12" OC EACH WAY. SEE TYPICAL DETAILS. PROVIDE ADD BARS OVER GIRDERS PER TYPICAL DETAILS. SEE PLAN FOR TOC ELEVATIONS.

SLAB EDGE LINWORK KEY:
 - - - - - INDICATES BENT PLATE WITH #4 WELDED THREADED BAR COUPLERS. REFER TO TYPICAL DETAIL 2/S00-24

7TH FLOOR FRAMING PLAN
 1/8" = 1'-0"

3/20/2018 8:20:19 AM
 I:\SS\Projects\2017\151093.00\LMC\Drawings\Working_Sets\Level\LOCAL_USER\REVIEWS\151093.EAST TOWER\0717_STRUCT_REVIEW.rvt