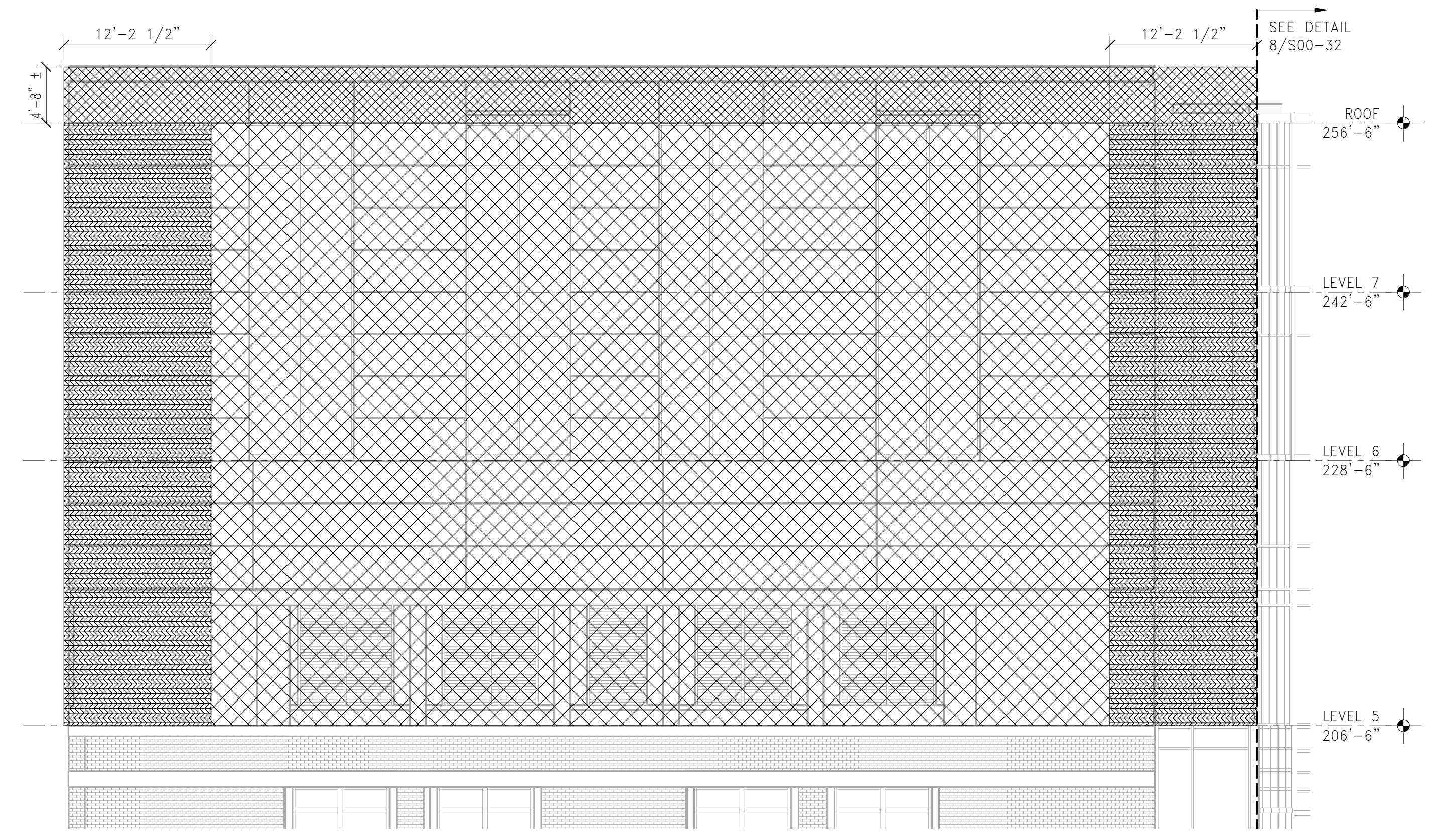
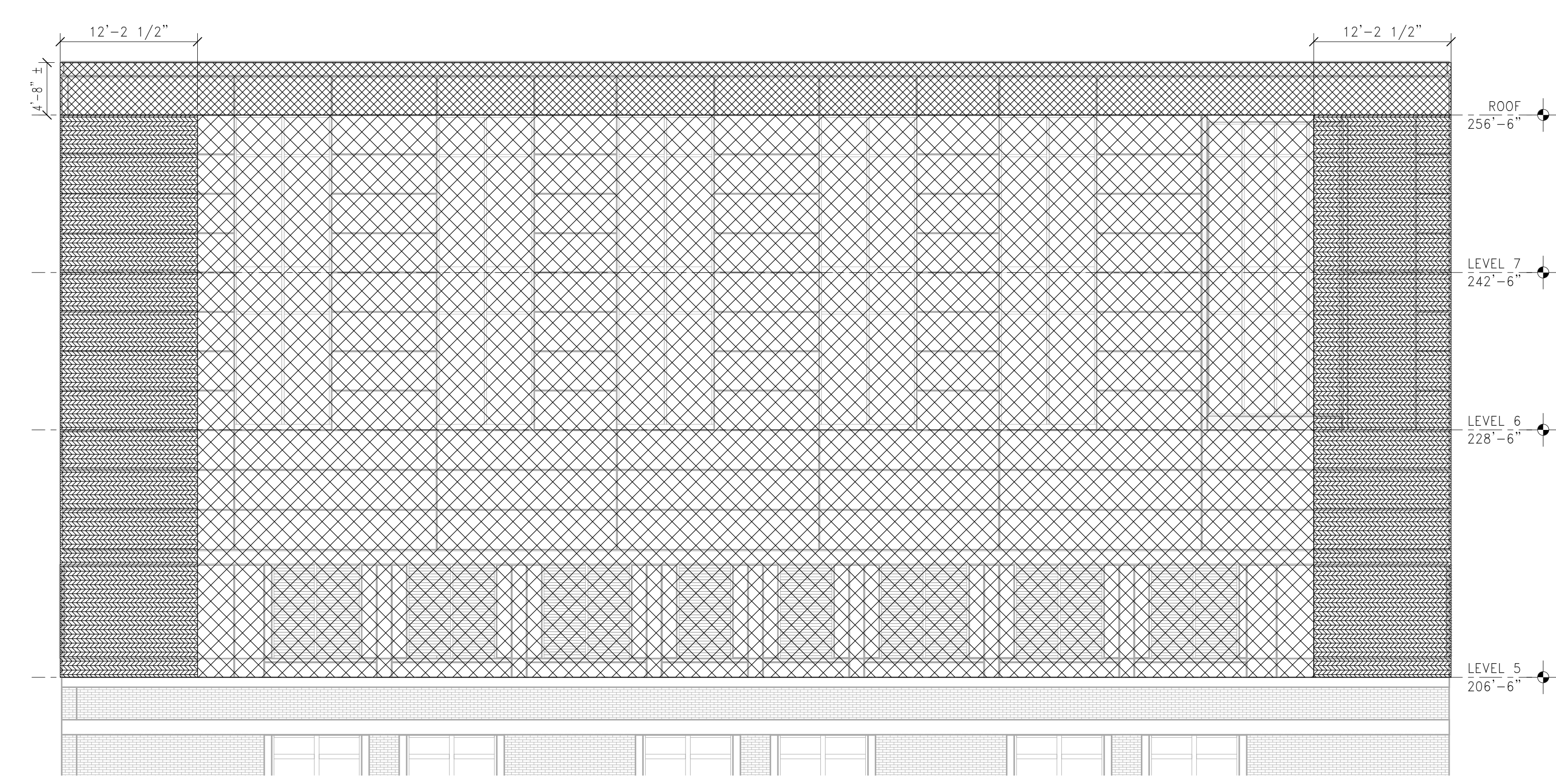


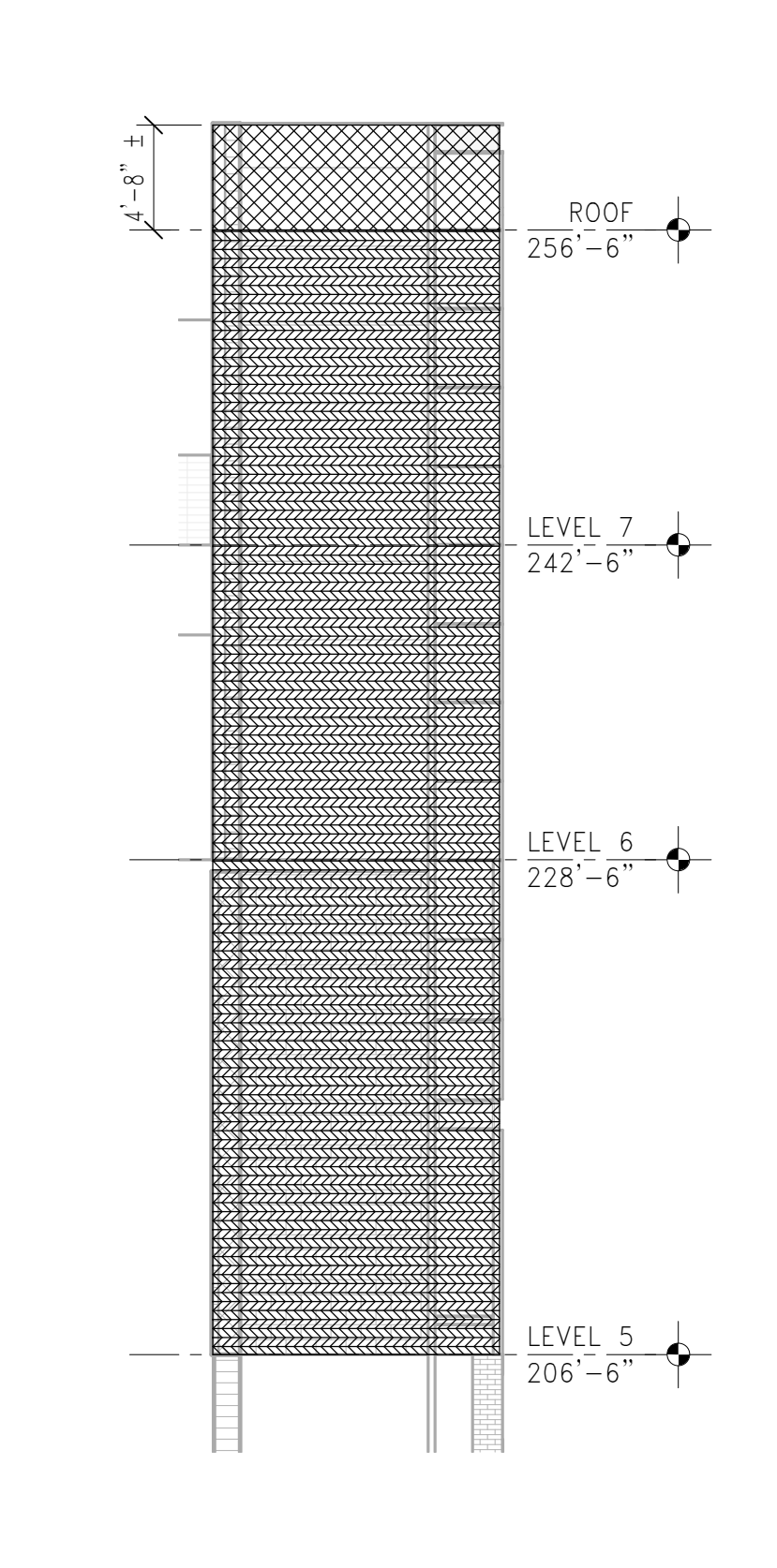
1	ADDENDUM 1	03/22/18
NO	ISSUE	DATE
Job Number 152181.000		
Drawn	REE	
Checked	BMT	
Approved	JHT	
TITLE		



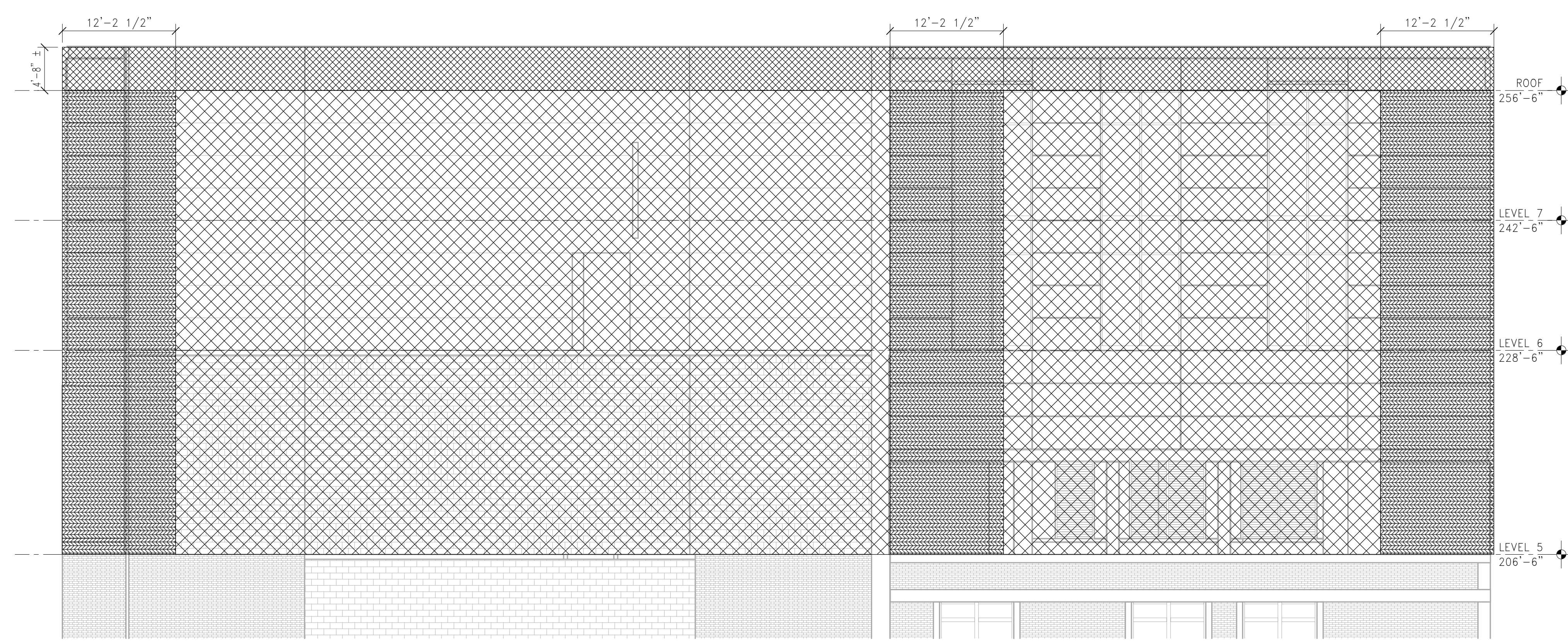
1 EAST ELEVATION D
 1/8" = 1'-0"



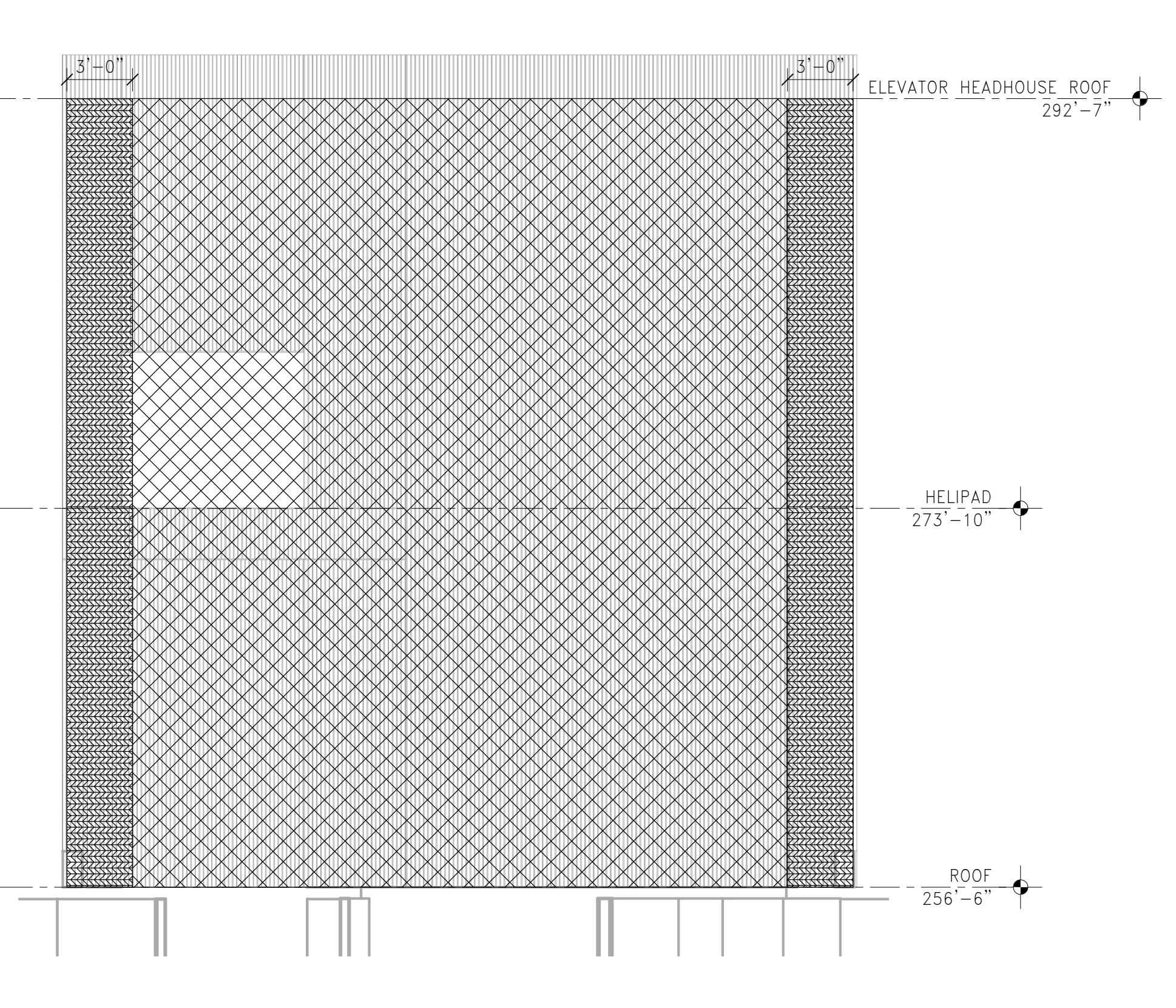
2 SOUTH ELEVATION B
 1/8" = 1'-0"



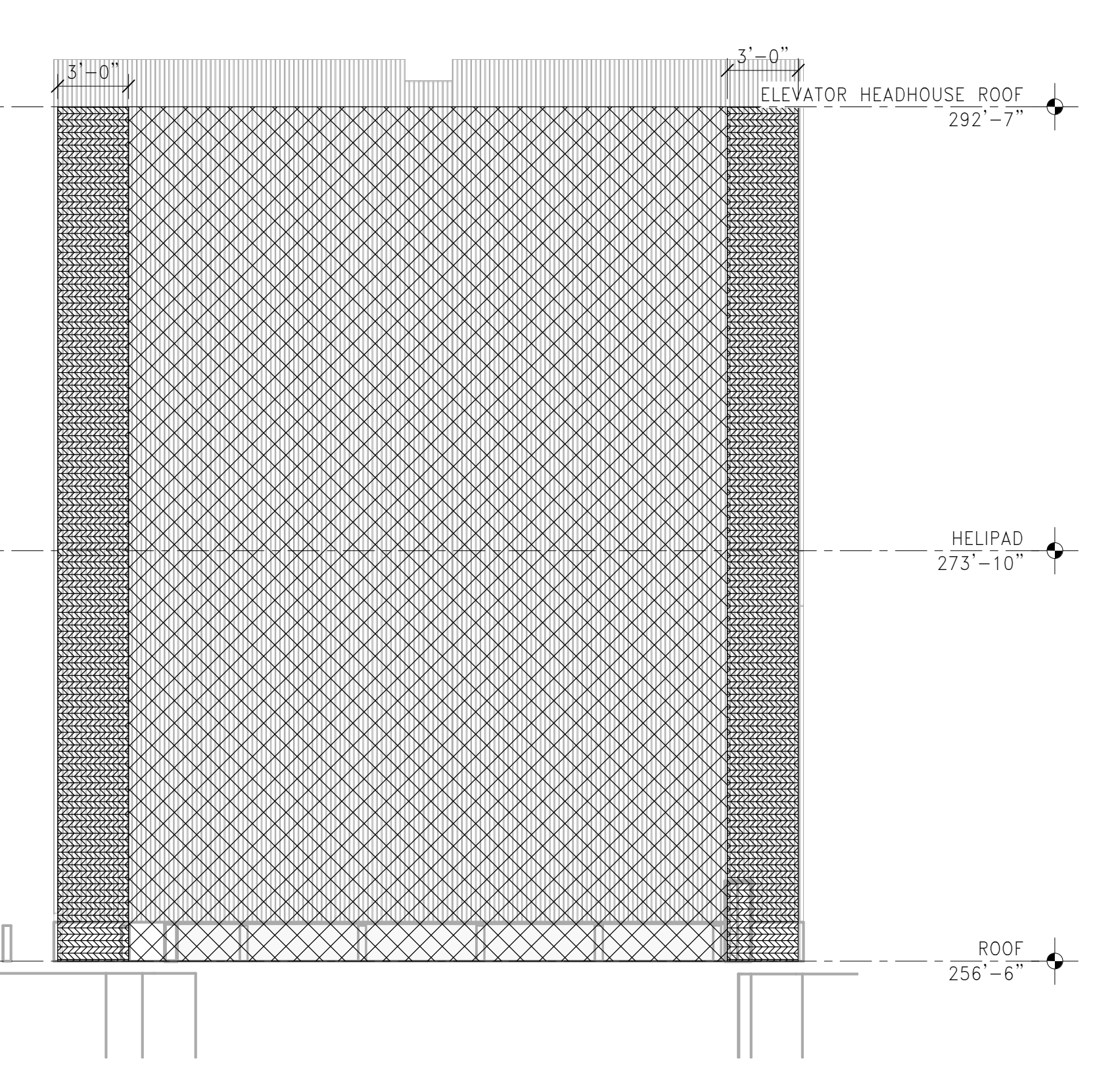
3 NORTH ELEVATION D
 1/8" = 1'-0"



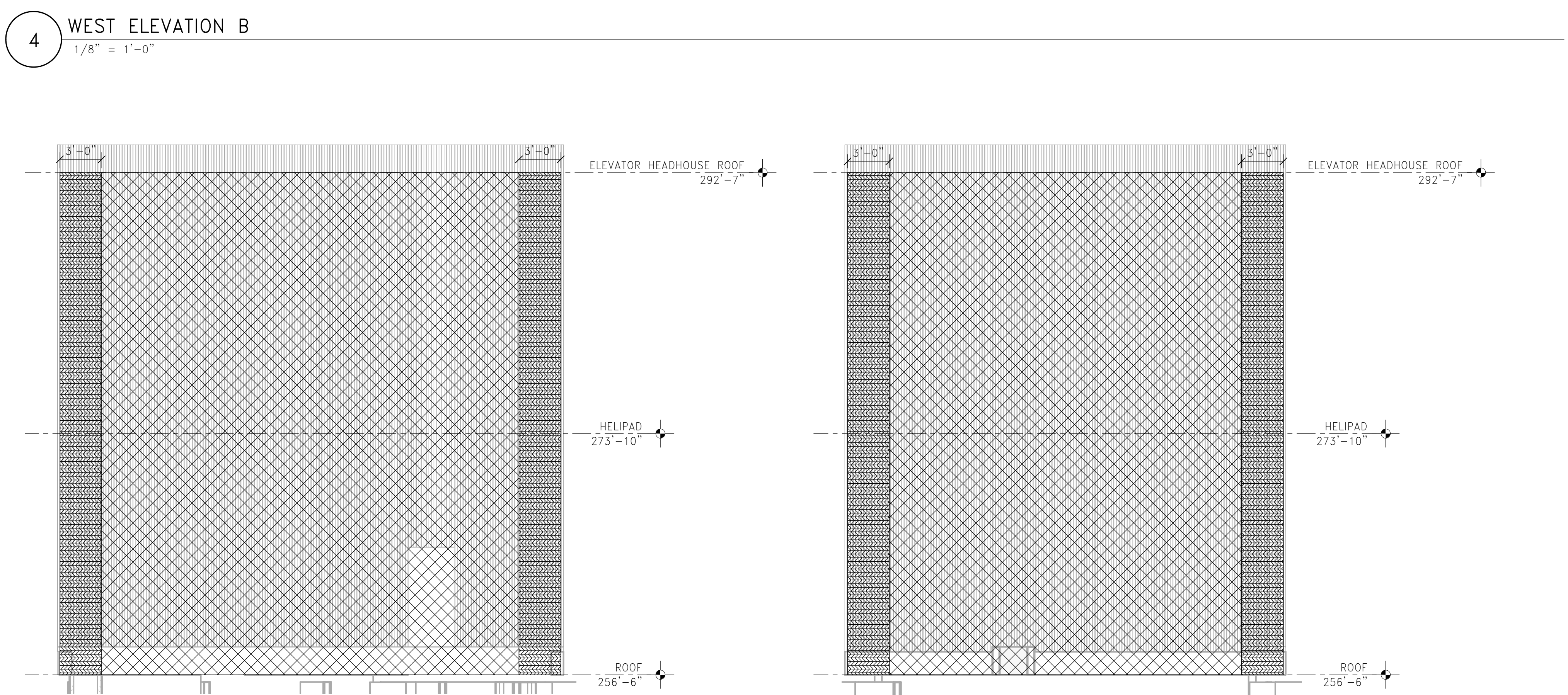
4 WEST ELEVATION B
 1/8" = 1'-0"



5 ELEVATOR HEADHOUSE NORTH ELEVATION
 3/16" = 1'-0"



6 ELEVATOR HEADHOUSE EAST ELEVATION
 3/16" = 1'-0"



7 ELEVATOR HEADHOUSE SOUTH ELEVATION
 3/16" = 1'-0"

8 ELEVATOR HEADHOUSE WEST ELEVATION
 3/16" = 1'-0"

LEVEL	ZONE 4 - PRESSURE (PSF)										
	≤ 19 SF	20 - 29 SF	30 - 39 SF	40 - 49 SF	50 - 59 SF	60 - 69 SF	70 - 79 SF	80 - 89 SF	90 - 99 SF	100 - 499 SF	≥ 500 SF
LEVEL 5	64.9	64.9	62.6	61.0	59.7	58.9	57.8	57.0	56.4	55.8	46.7
LEVEL 6	64.0	64.0	61.8	60.2	58.9	57.9	57.1	56.3	55.7	55.1	46.1
LEVEL 7	63.8	63.8	61.6	60.0	58.7	57.7	56.9	56.1	55.5	54.9	46.0
ROOF	63.8	63.8	61.6	60.0	58.8	57.7	56.9	56.1	55.5	54.9	46.0
HELIPAD	64.7	64.7	62.5	60.9	59.6	58.6	57.7	57.0	56.3	55.8	46.8
HEADHOUSE	65.2	65.2	62.9	61.3	60.1	59.0	58.2	57.4	56.8	56.2	47.1

LEVEL	ZONE 4 - SUCTION (PSF)										
	≤ 19 SF	20 - 29 SF	30 - 39 SF	40 - 49 SF	50 - 59 SF	60 - 69 SF	70 - 79 SF	80 - 89 SF	90 - 99 SF	100 - 499 SF	≥ 500 SF
LEVEL 5	-61.5	-61.4	-60.0	-59.0	-57.6	-57.0	-56.5	-56.1	-55.8	-55.1	-50.1
LEVEL 6	-61.5	-61.4	-60.0	-59.0	-57.6	-57.0	-56.5	-56.1	-55.8	-55.1	-50.1
LEVEL 7	-61.5	-61.4	-60.0	-59.0	-57.6	-57.0	-56.5	-56.1	-55.8	-55.1	-50.1
ROOF	-61.5	-61.4	-60.0	-59.0	-57.6	-57.0	-56.5	-56.1	-55.8	-55.1	-50.1
HELIPAD	-65.2	-65.2	-63.7	-62.6	-61.8	-61.1	-60.5	-60.0	-59.6	-59.2	-53.1
HEADHOUSE	-65.2	-65.2	-63.7	-62.6	-61.8	-61.1	-60.5	-60.0	-59.6	-59.2	-53.1

LEVEL	ZONE 5 - PRESSURE (PSF)										
	≤ 19 SF	20 - 29 SF	30 - 39 SF	40 - 49 SF	50 - 59 SF	60 - 69 SF	70 - 79 SF	80 - 89 SF	90 - 99 SF	100 - 499 SF	≥ 500 SF
LEVEL 5	64.9	64.9	62.6	61.0	59.7	58.7	57.8	57.0	56.4	55.8	46.7
LEVEL 6	64.0	64.0	61.8	60.2	58.9	57.9	57.1	56.3	55.7	55.1	46.1
LEVEL 7	63.8	63.8	61.6	60.0	58.7	57.7	56.9	56.1	55.5	54.9	46.0
ROOF	63.8	63.8	61.6	60.0	58.8	57.7	56.9	56.1	55.5	54.9	46.0
HELIPAD	64.7	64.7	62.5	60.9	59.6	58.6	57.7	57.0	56.3	55.8	46.8
HEADHOUSE	65.2	65.2	62.9	61.3	60.1	59.0	58.2	57.4	56.8	56.2	47.1

LEVEL	ZONE 5 - SUCTION (PSF)										
	≤ 19 SF	20 - 29 SF	30 - 39 SF	40 - 49 SF	50 - 59 SF	60 - 69 SF	70 - 79 SF	80 - 89 SF	90 - 99 SF	100 - 499 SF	≥ 500 SF
LEVEL 5	-112.7	-112.7	-108.9	-102.9	-99.7	-97.1	-94.9	-93.1	-91.4	-89.9	-67.1
LEVEL 6	-112.7	-112.7	-108.9	-102.9	-99.7	-97.1	-94.9	-93.1	-91.4	-89.9	-67.1
LEVEL 7	-112.7	-112.7	-108.9	-102.9	-99.7	-97.1	-94.9	-93.1	-91.4	-89.9	-67.1
ROOF	-112.7	-112.7	-108.9	-102.9	-99.7	-97.1	-94.9	-93.1	-91.4	-89.9	-67.1
HELIPAD	-119.6	-119.6	-113.5	-109.2	-105.8	-103.1	-100.8	-98.8	-97.0	-95.4	-71.2
HEADHOUSE	-119.6	-119.6	-113.5	-109.2	-105.8	-103.1	-100.8	-98.8	-97.0	-95.4	-71.2

TABLE A - EAST TOWER COMPONENTS AND CLADDING
 NOT TO SCALE

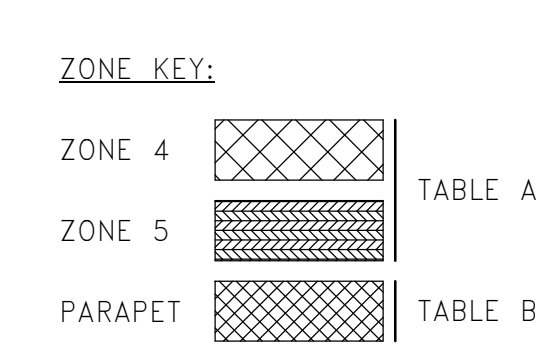
LOCATION	ZONE 4 - PRESSURE AND SUCTION (PSF)										
	≤ 9 SF	10 - 19 SF	20 - 29 SF	30 - 39 SF	40 - 49 SF	50 - 59 SF	60 - 69 SF	70 - 79 SF	80 - 89 SF	90 - 99 SF	≥ 100 SF
P ₁	62.1	62.1	58.8	56.8	55.5	54.4	53.5	52.8	52.2	51.6	51.1
P ₂	-142.5	-142.5	-135.0	-130.5	-127.4	-124.9	-123.0	-121.3	-119.8	-118.5	-117.4
P ₃	62.1	62.1	58.8	56.8	55.5	54.4	53.5	52.8	52.2	51.6	51.1
P ₄	-62.1	-62.1	-59.9	-58.6	-57.7	-57.0	-56.4	-55.9	-55.5	-55.1	-54.8

LOCATION	ZONE 5 - PRESSURE AND SUCTION (PSF)										
	≤ 9 SF	10 - 19 SF	20 - 29 SF	30 - 39 SF	40 - 49 SF	50 - 59 SF	60 - 69 SF	70 - 79 SF	80 - 89 SF	90 - 99 SF	≥ 100 SF
P ₁	62.1	62.1	58.8	56.8	55.5	54.4	53.5	52.8	52.2	51.6	51.1
P ₂	-194.3	-194.3	-184.0	-177.9	-173.6	-170.3	-167.6	-165.3	-163.3	-161.5	-160.0
P ₃	62.1	62.1	58.8	56.8	55.5	54.4	53.5	52.8	52.2	51.6	51.1
P ₄	-113.8	-113.8	-105.7	-101.0	-97.7	-95.1	-93.0	-91.2	-89.6	-88.2	-87.0

TABLE B - PARAPET COMPONENTS AND CLADDING
 NOT TO SCALE

COMPONENTS AND CLADDING PRESSURE AND SUCTION NOTES:

- COMPONENT AND CLADDING WIND CRITERIA IS BASED ON FM GLOBAL REQUIREMENTS FOR THE PROJECT REFERENCED IN "FM GLOBAL PROPERTY LOSS PREVENTION DATA SHEETS 1-28 - WIND DESIGN".
- WIND LOAD PARAMETERS:
 - A. BASIC STRENGTH DESIGN WIND SPEED (3 SECOND GUST), V_{3S} 127 MPH (RISK CATEGORY IV, ASCE 7-10 1700 MRI)
 - B. WIND EXPOSURE C (WITH ESCARPMENT)
 - C. INTERNAL PRESSURE COEFFICIENT ±0.18
- WIND PRESSURES AND SUCTIONS SHOWN HERE ARE FOR STRENGTH DESIGN.
- TO DETERMINE THE FM GLOBAL WIND RATING, SELECT THE SMALLEST TRIBUTARY AREA ON THE TABLE AND ROUND UP TO THE NEAREST INTERVAL OF 15.
- FOR DEFLECTION DESIGN, IN ACCORDANCE WITH IBC 2015 TABLE 1604.3, STRENGTH DESIGN WIND PRESSURES AND SUCTIONS MAY BE SCALED BY 0.42.
- WIND PRESSURES AND SUCTIONS ON COMPONENTS AND CLADDING ELEMENTS WITH AFFECTIVE AREAS OTHER THAN SHOWN HERE MAY NOT BE LINEARLY INTERPOLATED FROM THE VALUES SHOWN HERE. SEE ASCE7-10 FOR ADDITIONAL INFORMATION.



I:\USP\Projects\2018\09\03\AMC\Drawings\Working_Sets\Revit\LOCAL_USER\REVIEWS\15181\AMC-EAST TOWER-2017_STRUCT-REV.dwg
 3/20/2018 9:19:59 AM