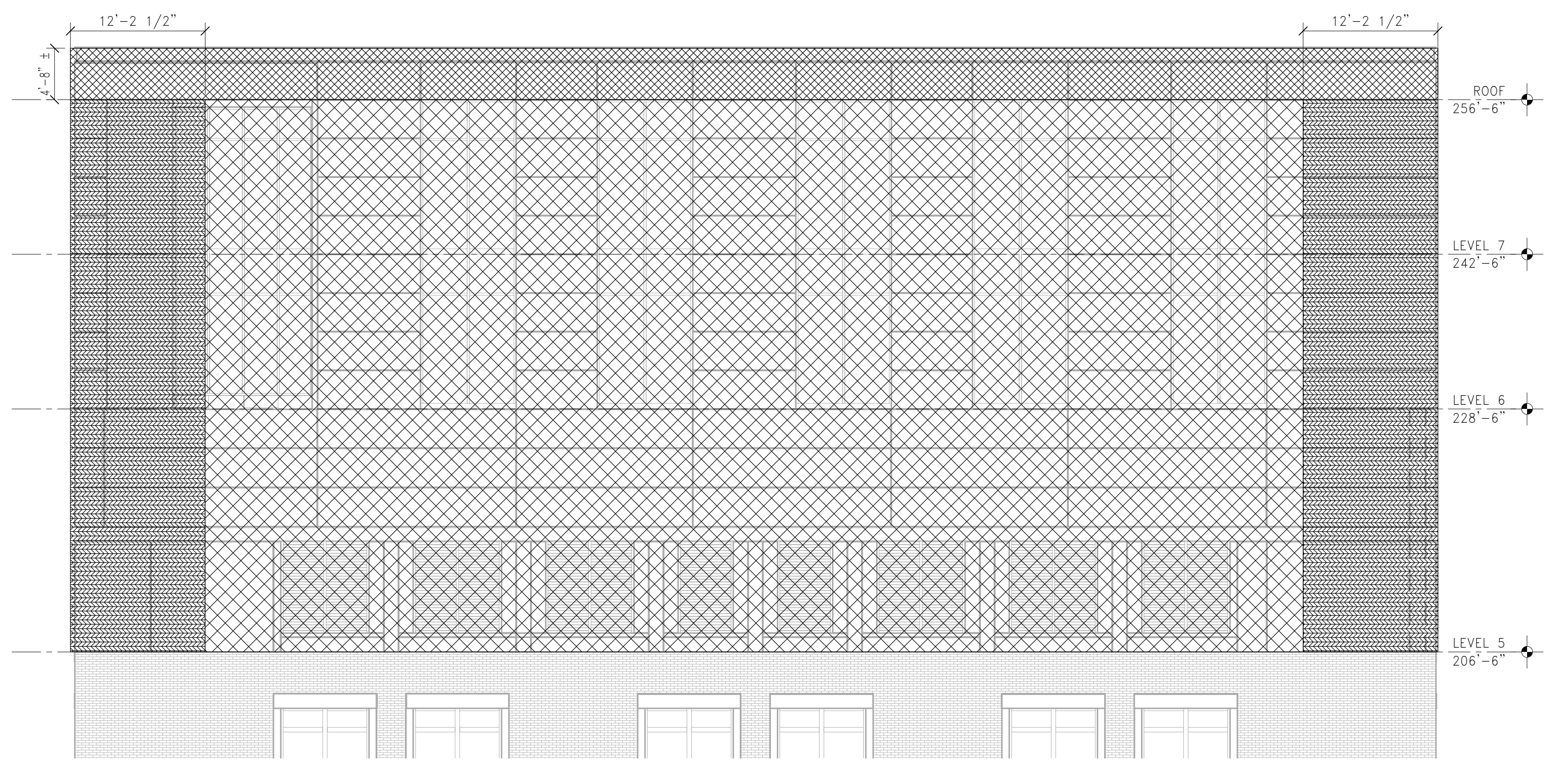
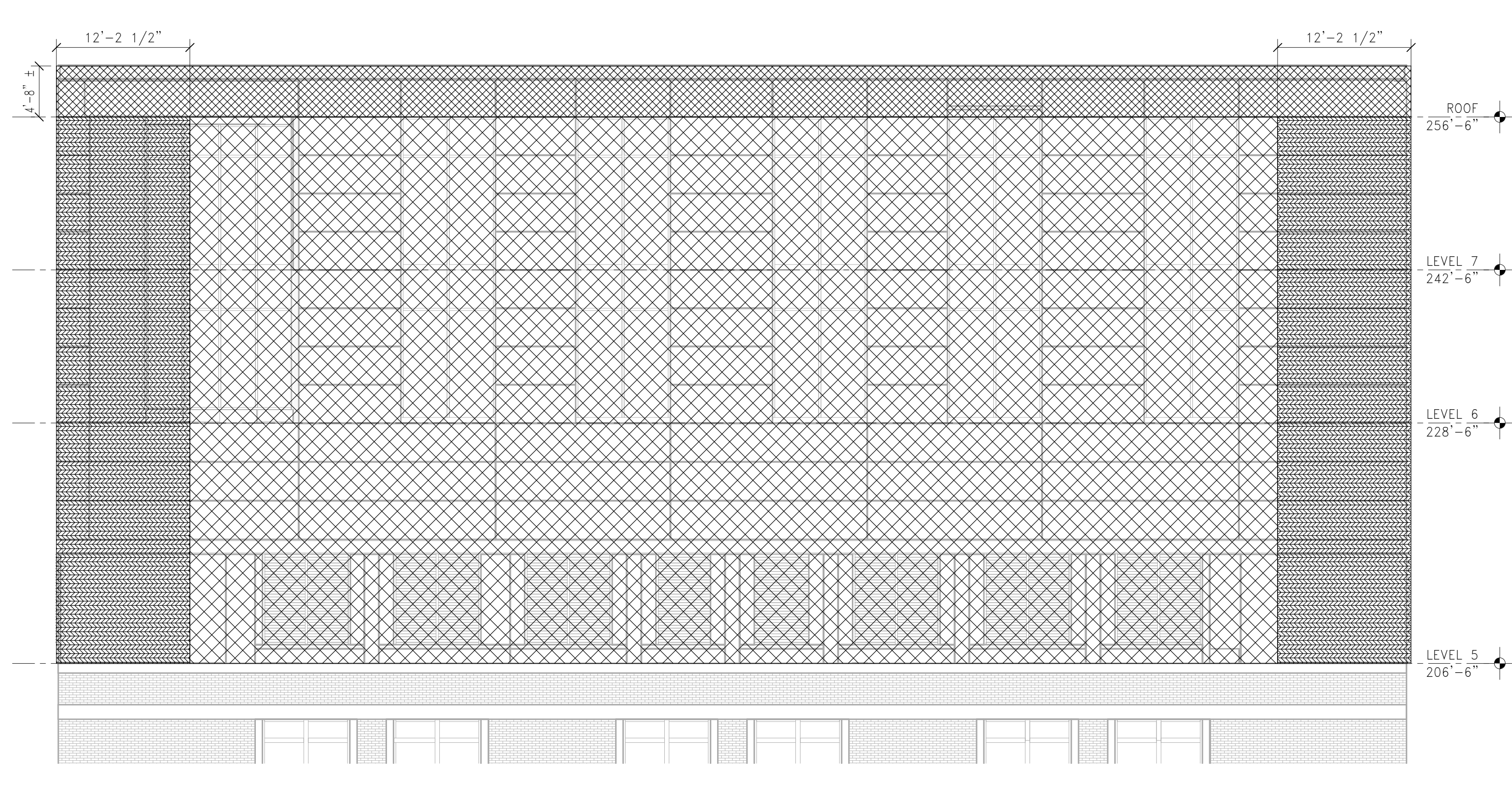


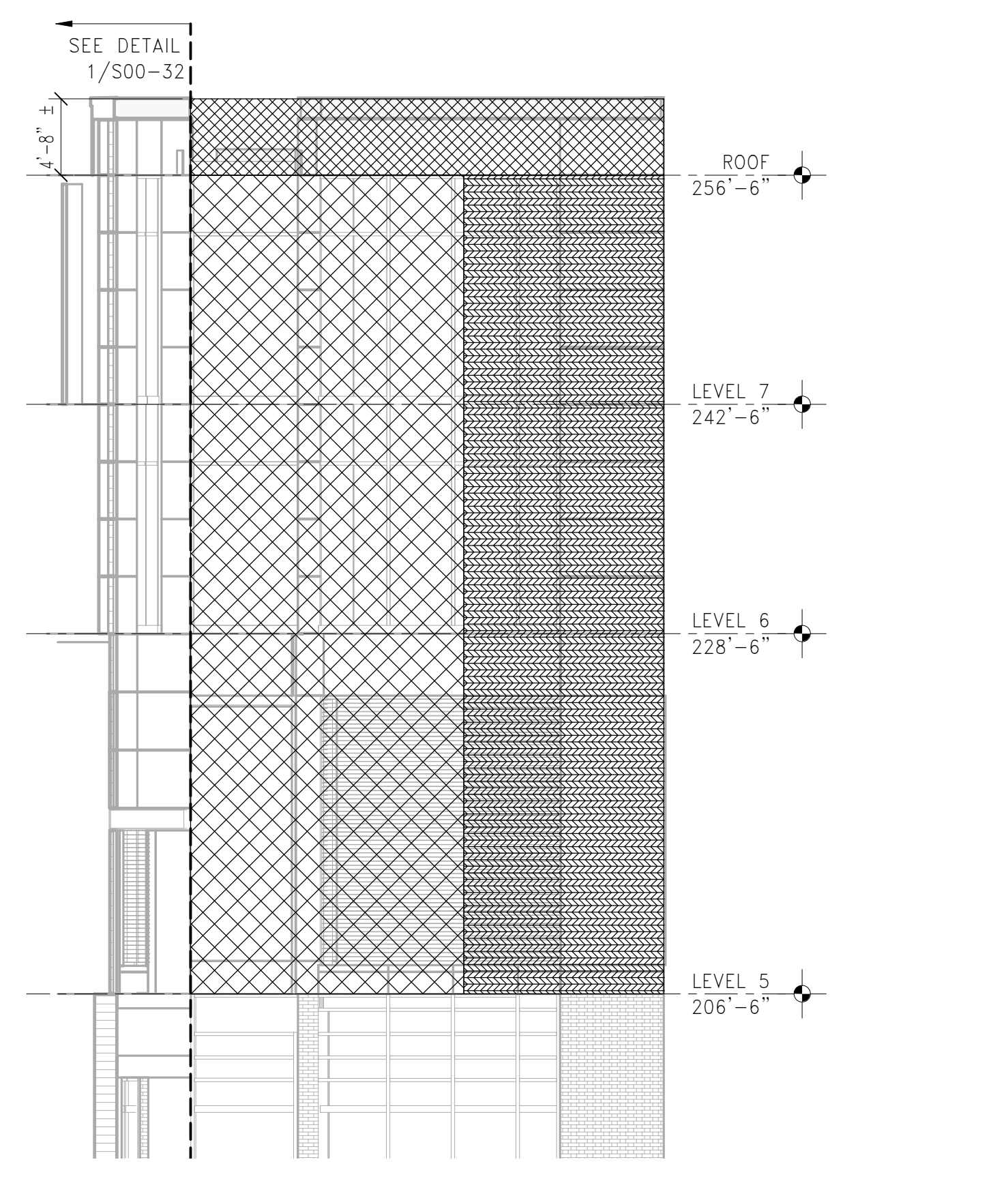
1 WEST ELEVATION A
 1/8" = 1'-0"



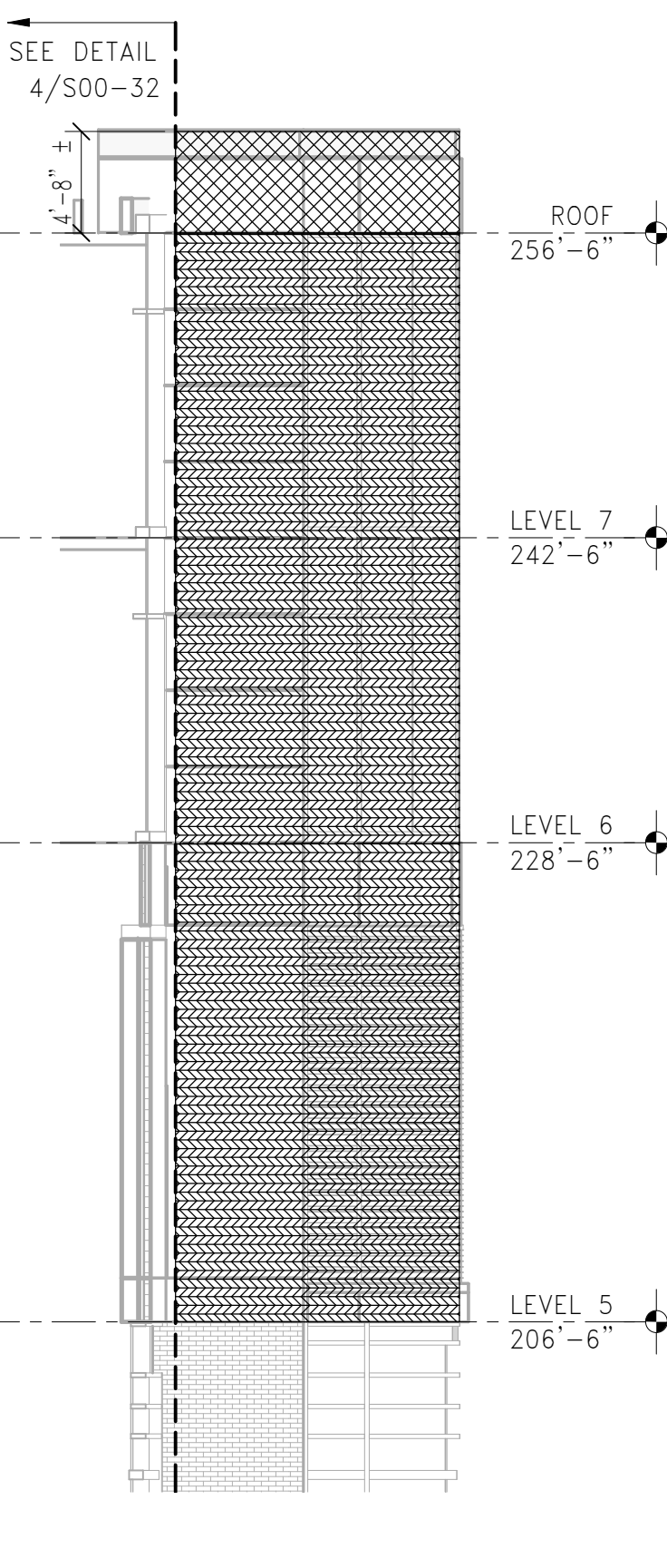
2 NORTH ELEVATION A
 1/8" = 1'-0"



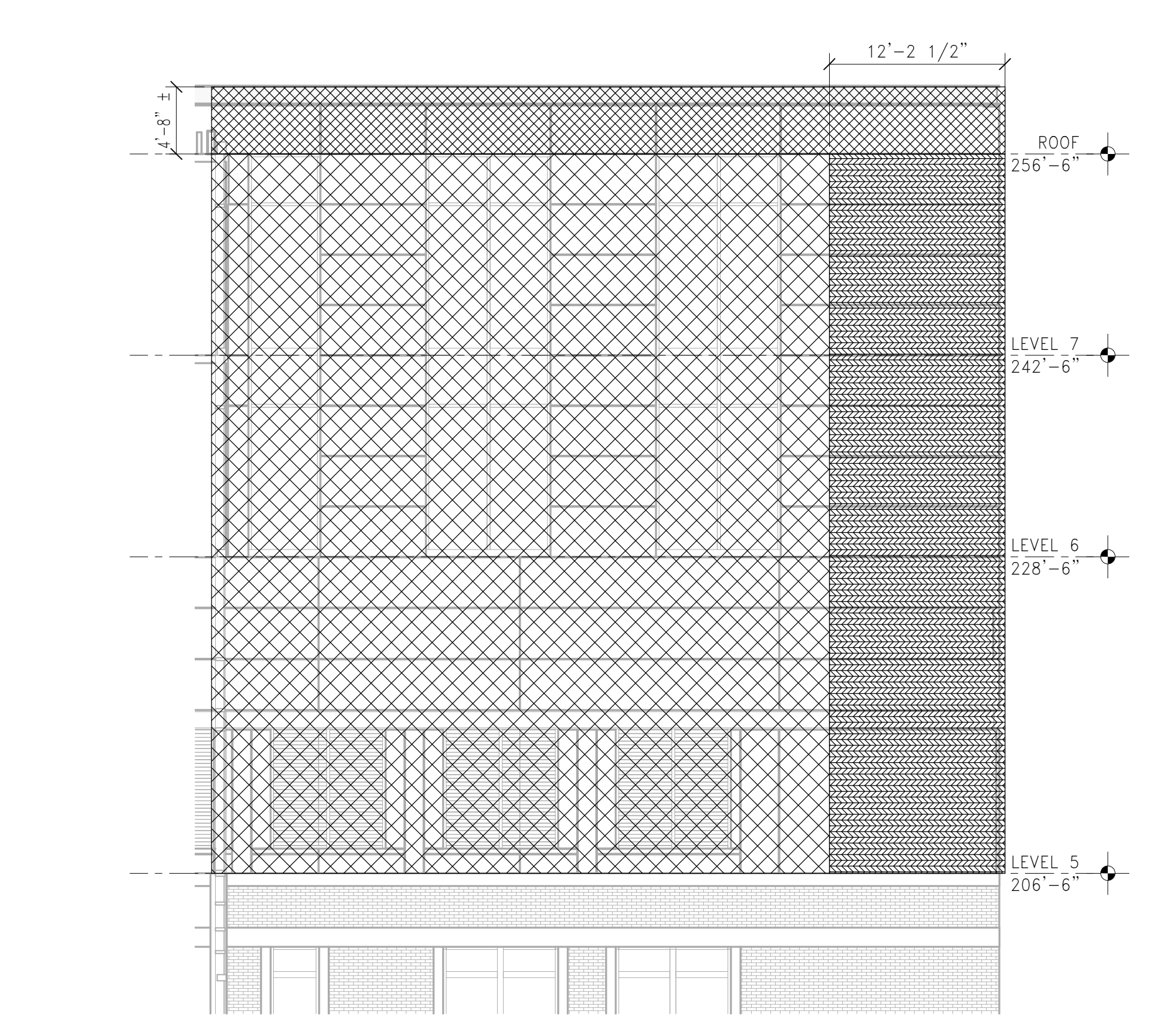
3 EAST ELEVATION A
 1/8" = 1'-0"



4 NORTH ELEVATION B
 1/8" = 1'-0"



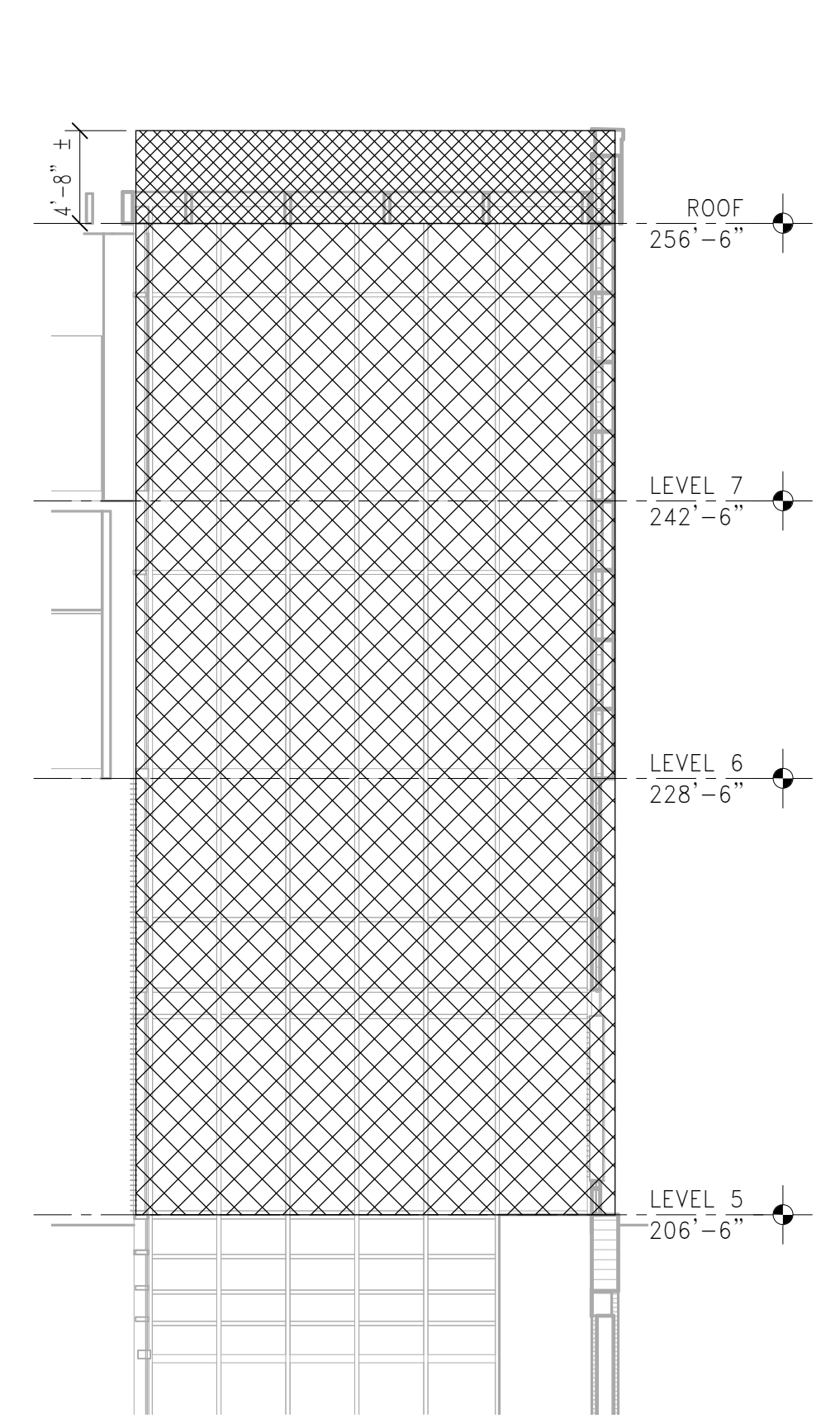
5 EAST ELEVATION B
 1/8" = 1'-0"



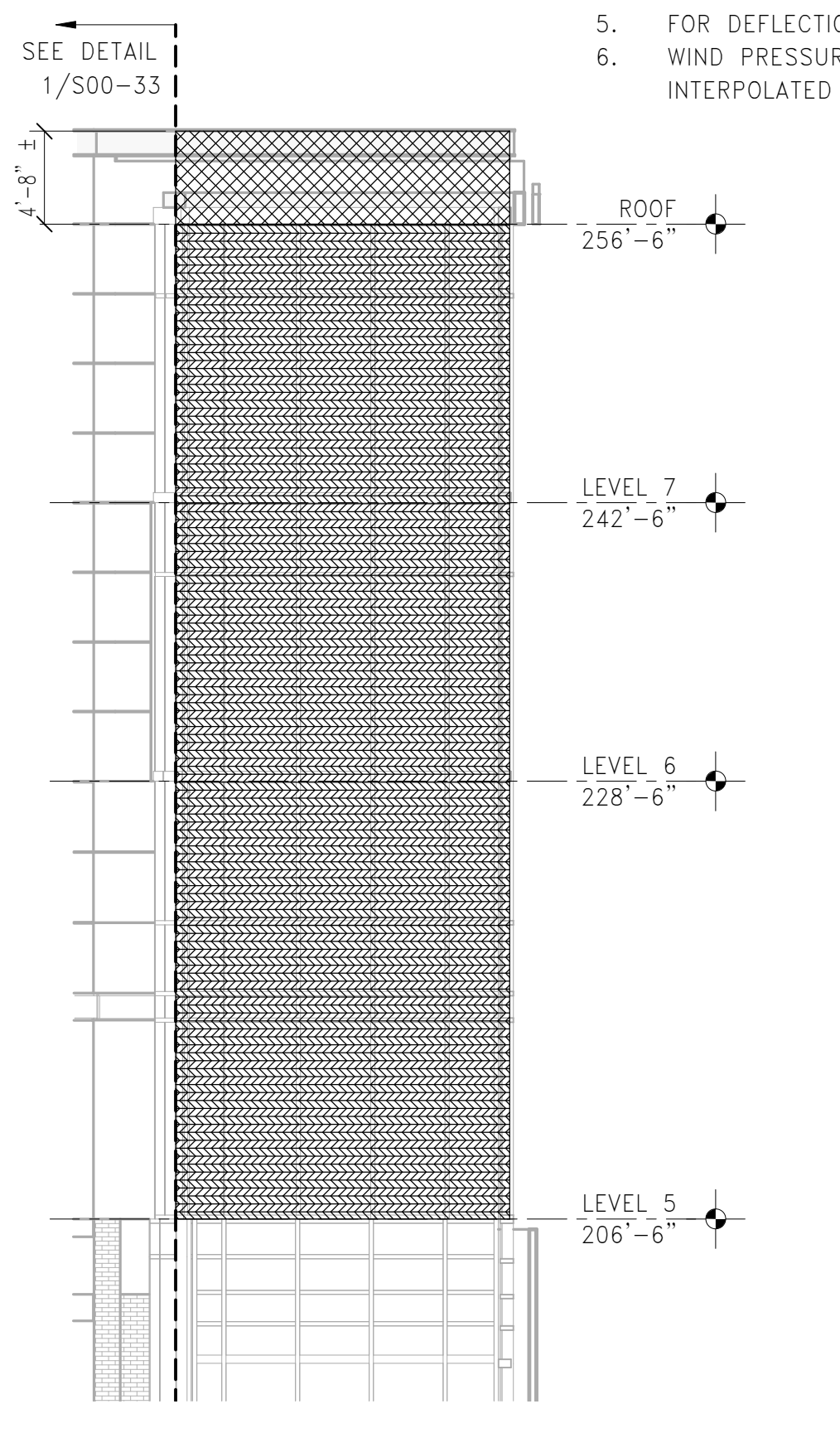
6 SOUTH ELEVATION A
 1/8" = 1'-0"

COMPONENTS AND CLADDING PRESSURE AND SUCTION NOTES:

- COMPONENT AND CLADDING WIND CRITERIA IS BASED ON FM GLOBAL REQUIREMENTS FOR THE PROJECT REFERENCED IN "FM GLOBAL PROPERTY LOSS PREVENTION DATA SHEETS 1-28 - WIND DESIGN".
- WIND LOAD PARAMETERS:
 A. BASIC STRENGTH DESIGN WIND SPEED (3 SECOND GUST), V_{max} 127 MPH (RISK CATEGORY IV, ASCE 7-10 1700 MRI)
 B. WIND EXPOSURE C (WITH ESCARPMENT) ± 0.18
 C. INTERNAL PRESSURE COEFFICIENT ± 0.18
- WIND PRESSURES AND SUCTIONS SHOWN HERE ARE FOR STRENGTH DESIGN.
- TO DETERMINE THE FM GLOBAL WIND RATING, SELECT THE SMALLEST TRIBUTARY AREA ON THE TABLE AND ROUND UP TO THE NEAREST INTERVAL OF 15.
- FOR DEFLECTION DESIGN, IN ACCORDANCE WITH IBC 2015 TABLE 1604.3, STRENGTH DESIGN WIND PRESSURES AND SUCTIONS MAY BE SCALED BY 0.42.
- WIND PRESSURES AND SUCTIONS ON COMPONENTS AND CLADDING ELEMENTS WITH AFFECTIVE AREAS OTHER THAN SHOWN HERE MAY NOT BE LINEARLY INTERPOLATED FROM THE VALUES SHOWN HERE. SEE ASCE7-10 FOR ADDITIONAL INFORMATION.



7 EAST ELEVATION C
 1/8" = 1'-0"



8 NORTH ELEVATION C
 1/8" = 1'-0"

ZONE KEY:

ZONE 4 TABLE A

ZONE 5 TABLE B

PARAPET TABLE B

TABLE A - EAST TOWER COMPONENTS AND CLADDING
 NOT TO SCALE

LEVEL	ZONE 4 - PRESSURE (PSF)										
	≤ 19 SF	20 - 29 SF	30 - 39 SF	40 - 49 SF	50 - 59 SF	60 - 69 SF	70 - 79 SF	80 - 89 SF	90 - 99 SF	100 - 499 SF	≥ 500 SF
LEVEL 5	64.9	64.9	62.6	61.0	59.7	58.7	57.8	57.0	56.4	55.8	46.7
LEVEL 6	64.0	64.0	61.8	60.2	58.9	57.9	57.1	56.3	55.7	55.1	46.1
LEVEL 7	63.8	63.8	61.6	60.0	58.7	57.7	56.9	56.1	55.5	54.9	46.0
ROOF	63.8	63.8	61.6	60.0	58.8	57.7	56.9	56.1	55.5	54.9	46.0
HEADPAD	64.7	64.7	62.5	60.9	59.6	58.6	57.7	57.0	56.3	55.8	46.8
HEADHOUSE	65.2	65.2	62.9	61.3	60.1	59.0	58.2	57.4	56.8	56.2	47.1

LEVEL	ZONE 4 - SUCTION (PSF)										
	≤ 19 SF	20 - 29 SF	30 - 39 SF	40 - 49 SF	50 - 59 SF	60 - 69 SF	70 - 79 SF	80 - 89 SF	90 - 99 SF	100 - 499 SF	≥ 500 SF
LEVEL 5	-61.5	-61.4	-60.0	-59.0	-58.2	-57.6	-57.0	-56.5	-56.1	-55.8	-50.1
LEVEL 6	-61.5	-61.4	-60.0	-59.0	-58.2	-57.6	-57.0	-56.5	-56.1	-55.8	-50.1
LEVEL 7	-61.5	-61.4	-60.0	-59.0	-58.2	-57.6	-57.0	-56.5	-56.1	-55.8	-50.1
ROOF	-61.5	-61.4	-60.0	-59.0	-58.2	-57.6	-57.0	-56.5	-56.1	-55.8	-50.1
HEADPAD	-65.2	-65.2	-63.7	-62.6	-61.8	-61.1	-60.5	-60.0	-59.6	-59.2	-53.1
HEADHOUSE	-65.2	-65.2	-63.7	-62.6	-61.8	-61.1	-60.5	-60.0	-59.6	-59.2	-53.1

TABLE A - EAST TOWER COMPONENTS AND CLADDING
 NOT TO SCALE

LEVEL	ZONE 5 - PRESSURE (PSF)										
	≤ 9 SF	10 - 19 SF	20 - 29 SF	30 - 39 SF	40 - 49 SF	50 - 59 SF	60 - 69 SF	70 - 79 SF	80 - 89 SF	90 - 99 SF	≥ 100 SF
P ₁	62.1	62.1	58.8	56.8	55.5	54.4	53.5	52.8	52.2	51.6	51.1
P ₂	-142.5	-142.5	-135.0	-130.5	-127.4	-124.8	-123.0	-121.3	-119.8	-118.5	-117.4
S ₁	62.1	62.1	58.8	56.8	55.5	54.4	53.5	52.8	52.2	51.6	51.1
S ₂	-62.1	-62.1	-59.9	-58.6	-57.7	-57.0	-56.4	-55.9	-55.5	-55.1	-54.8

LEVEL	ZONE 5 - SUCTION (PSF)										
	≤ 9 SF	10 - 19 SF	20 - 29 SF	30 - 39 SF	40 - 49 SF	50 - 59 SF	60 - 69 SF	70 - 79 SF	80 - 89 SF	90 - 99 SF	≥ 100 SF
LEVEL 6	-112.7	-112.7	-106.9	-102.9	-102.9	-99.7	-97.1	-94.9	-93.1	-91.4	-89.1
LEVEL 7	-112.7	-112.7	-106.9	-102.9	-102.9	-99.7	-97.1	-94.9	-93.1	-91.4	-89.1
ROOF	-112.7	-112.7	-106.9	-102.9	-102.9	-99.7	-97.1	-94.9	-93.1	-91.4	-89.1
HEADPAD	-119.6	-119.6	-113.5	-109.2	-109.2	-105.8	-103.1	-100.8	-98.8	-97.0	-95.4
HEADHOUSE	-119.6	-119.6	-113.5	-109.2	-109.2	-105.8	-103.1	-100.8	-98.8	-97.0	-95.4

TABLE B - PARAPET COMPONENTS AND CLADDING
 NOT TO SCALE

LOCATION	ZONE 5 - PRESSURE AND SUCTION (PSF)										
	≤ 9 SF	10 - 19 SF	20 - 29 SF	30 - 39 SF	40 - 49 SF	50 - 59 SF	60 - 69 SF	70 - 79 SF	80 - 89 SF	90 - 99 SF	≥ 100 SF
P ₁	62.1	62.1	58.8	56.8	55.5	54.4	53.5	52.8	52.2	51.6	51.1
P ₂	-194.3	-194.3	-184.0	-177.9	-173.6	-170.3	-167.6	-165.3	-163.3	-161.3	-160.0
S ₁	62.1	62.1	58.8	56.8	55.5	54.4	53.5	52.8	52.2	51.6	51.1
S ₂	-113.8	-113.8	-105.7	-101.0	-97.7	-95.1	-93.0	-91.2	-89.6	-88.2	-87.0