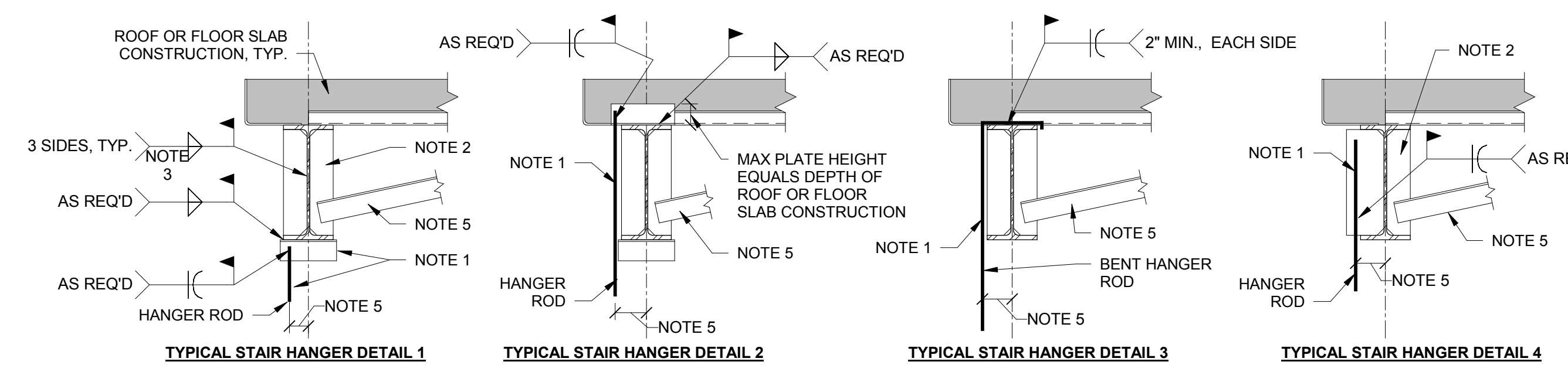


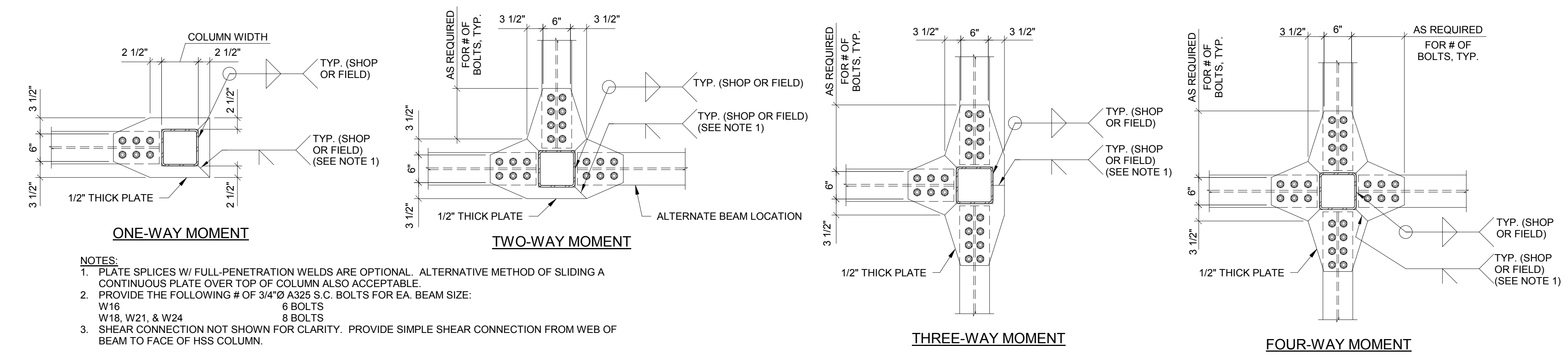
- NOTES:
 1. HANGER ASSEMBLY PLUS CONNECTION TO BE PROVIDED AND DESIGNED BY STAIR MANUFACTURER.
 2. STIFFENERS AND PLATES SHOWN IN DETAILS ABOVE TO BE INSTALLED BY STAIR MANUFACTURER. 1/4" MINIMUM THICKNESS.
 3. STIFFENER WELDS: 1/4" MIN. SUBMIT SIGNED AND SEALED CALCULATIONS WITH ANY ALTERNATE WELD DESIGN REQUESTED.
 4. COORDINATE STEEL ERECTION AND HANGER INSTALLATION AS REQUIRED.

12 NOT USED
 NOT TO SCALE

11 HSS STAIR HANGER
 NOT TO SCALE



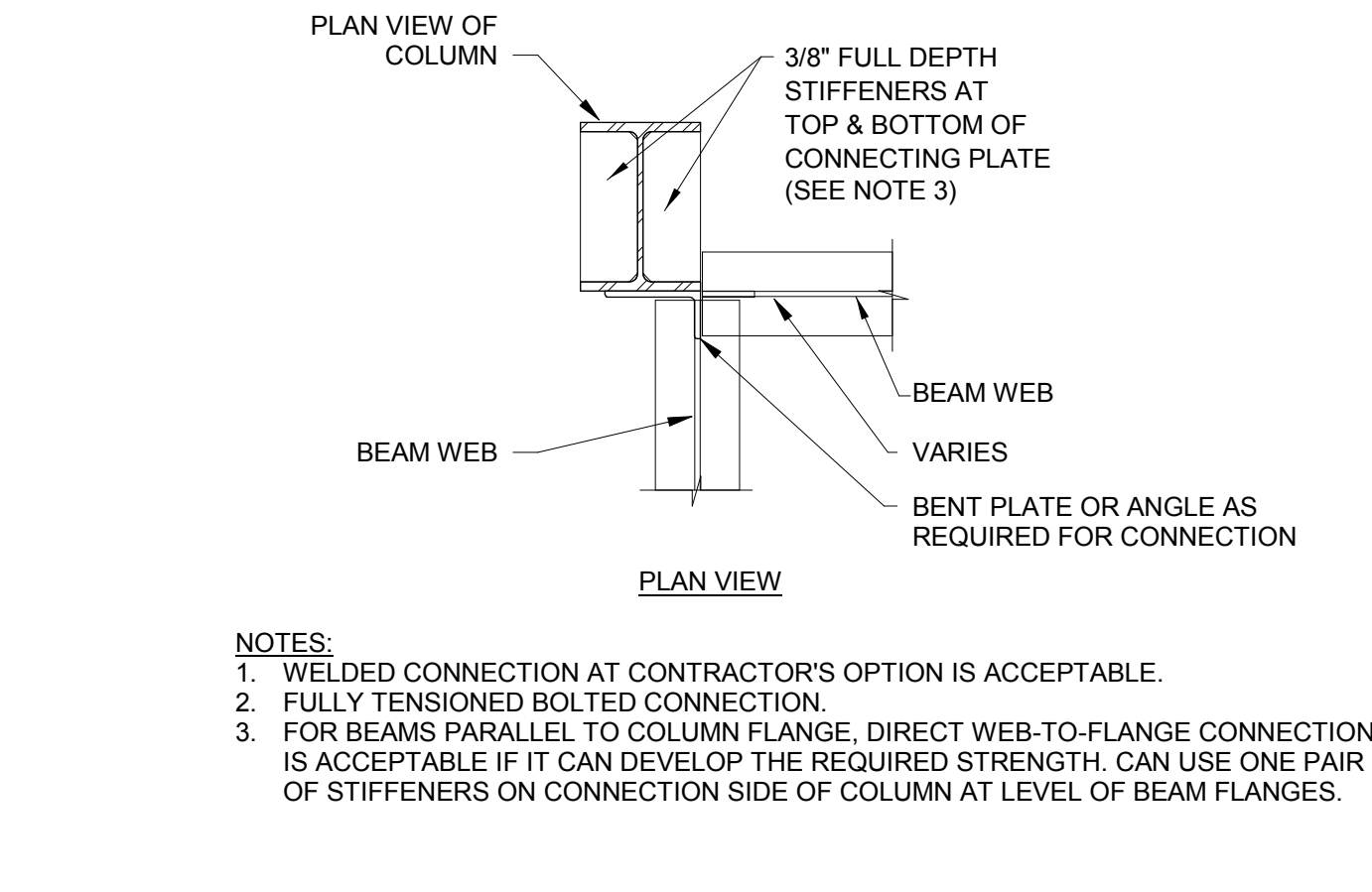
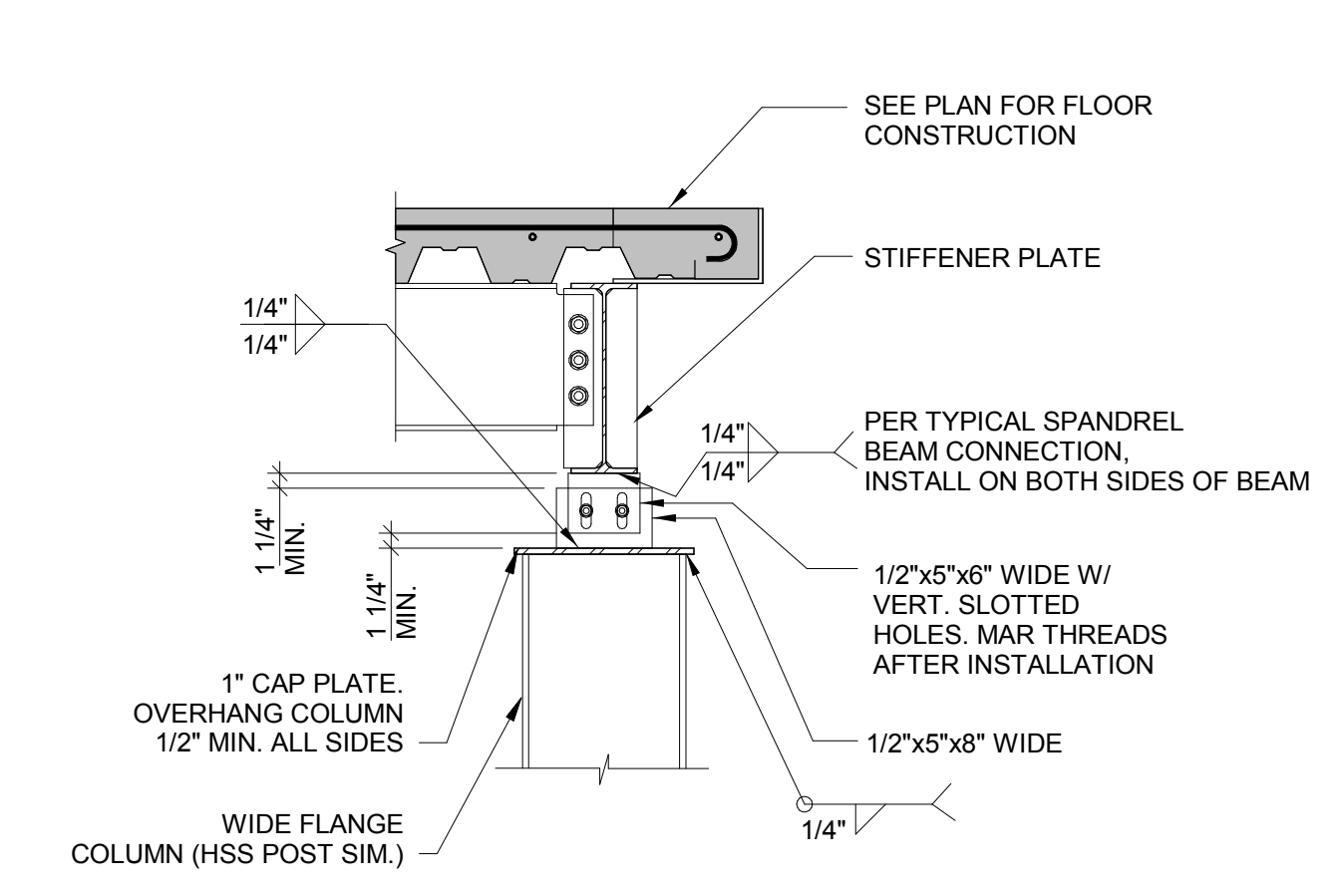
- NOTES:
 1. HANGER ASSEMBLY AND CONNECTION TO BASE BUILDING STRUCTURE TO BE PROVIDED AND DESIGNED BY STAIR FABRICATOR.
 2. STIFFENERS AND PLATES SHOWN IN DETAILS ABOVE TO BE INSTALLED BY STAIR MANUFACTURER. PROVIDE 1/4" MINIMUM THICKNESS STIFFENER PLATES BUT NOT LESS THAN THE THICKNESS OF THE BEAM WEB. STIFFENER PLATES TO BE FULL DEPTH FOR W16 AND SHALLOWER BEAMS AND 1/4" TALL FOR ALL DEEPER BEAMS (MIN).
 3. STIFFENER WELDS TO BE 1/8" LESS THAN STIFFENER THICKNESS.
 4. COORDINATE STEEL ERECTION AND HANGER INSTALLATION AS REQUIRED.
 5. MAXIMUM ECCENTRICITY TO BE THE WIDTH OF THE SUPPORTING BEAM FLANGE. IF A GREATER ECCENTRICITY IS REQUIRED, PROVIDE 1:3x3:8 KICKER ANGLE AND CONNECTION PLATES TO ADJACENT BEAM.



- NOTES:
 1. PLATE SPLICES W/ FULL PENETRATION WELDS ARE OPTIONAL. ALTERNATIVE METHOD OF SLIDING A CONTINUOUS PLATE OVER TOP OF COLUMN ALSO ACCEPTABLE.
 2. PROVIDE THE FOLLOWING # OF 3/4" A325 S.C. BOLTS FOR EA. BEAM SIZE:
 W16: 8 BOLTS
 W18, W21, & W24: 8 BOLTS
 3. SHEAR CONNECTION NOT SHOWN FOR CLARITY. PROVIDE SIMPLE SHEAR CONNECTION FROM WEB OF BEAM TO FACE OF HSS COLUMN.

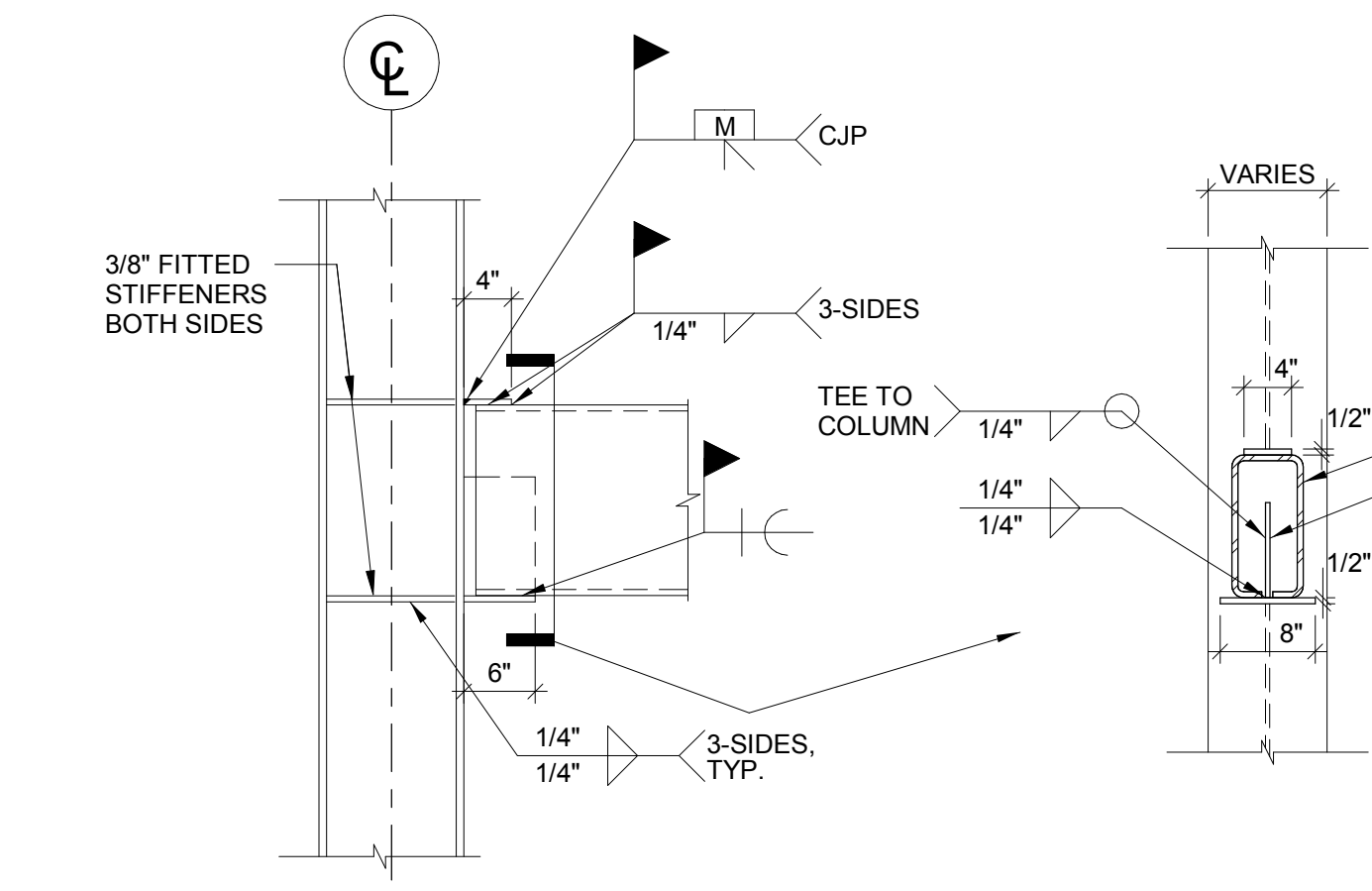
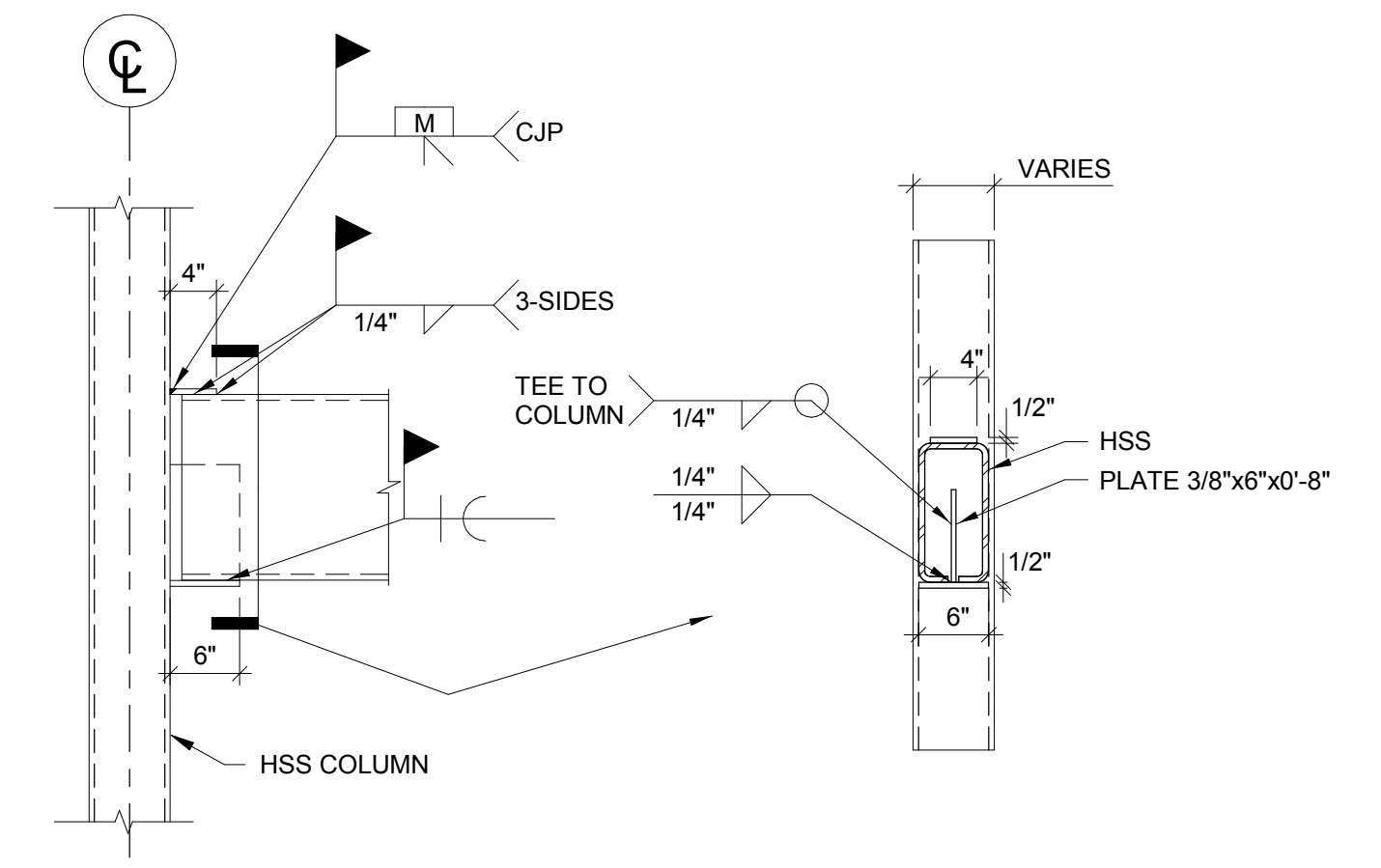
9 STANDARD WIDE FLANGE BEAM TO HSS COLUMN MOMENT CONNECTION
 NOT TO SCALE

10 STAIR HANGER DETAILS
 NOT TO SCALE



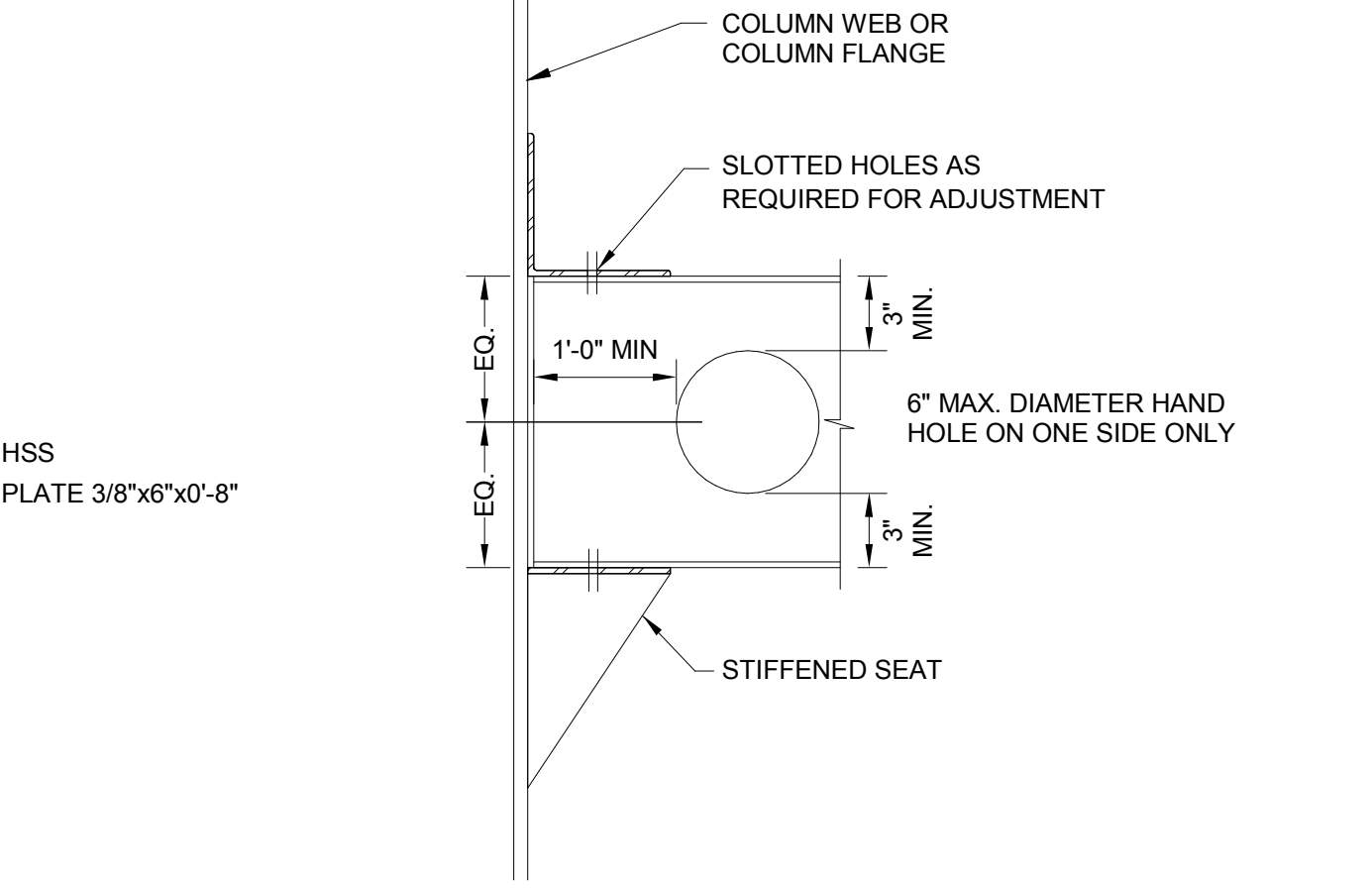
8 TYPICAL WIND COLUMN TOP CONNECTION
 NOT TO SCALE

7 TYPICAL OFFSET BEAM CONNECTION TO COLUMN FLANGE
 NOT TO SCALE

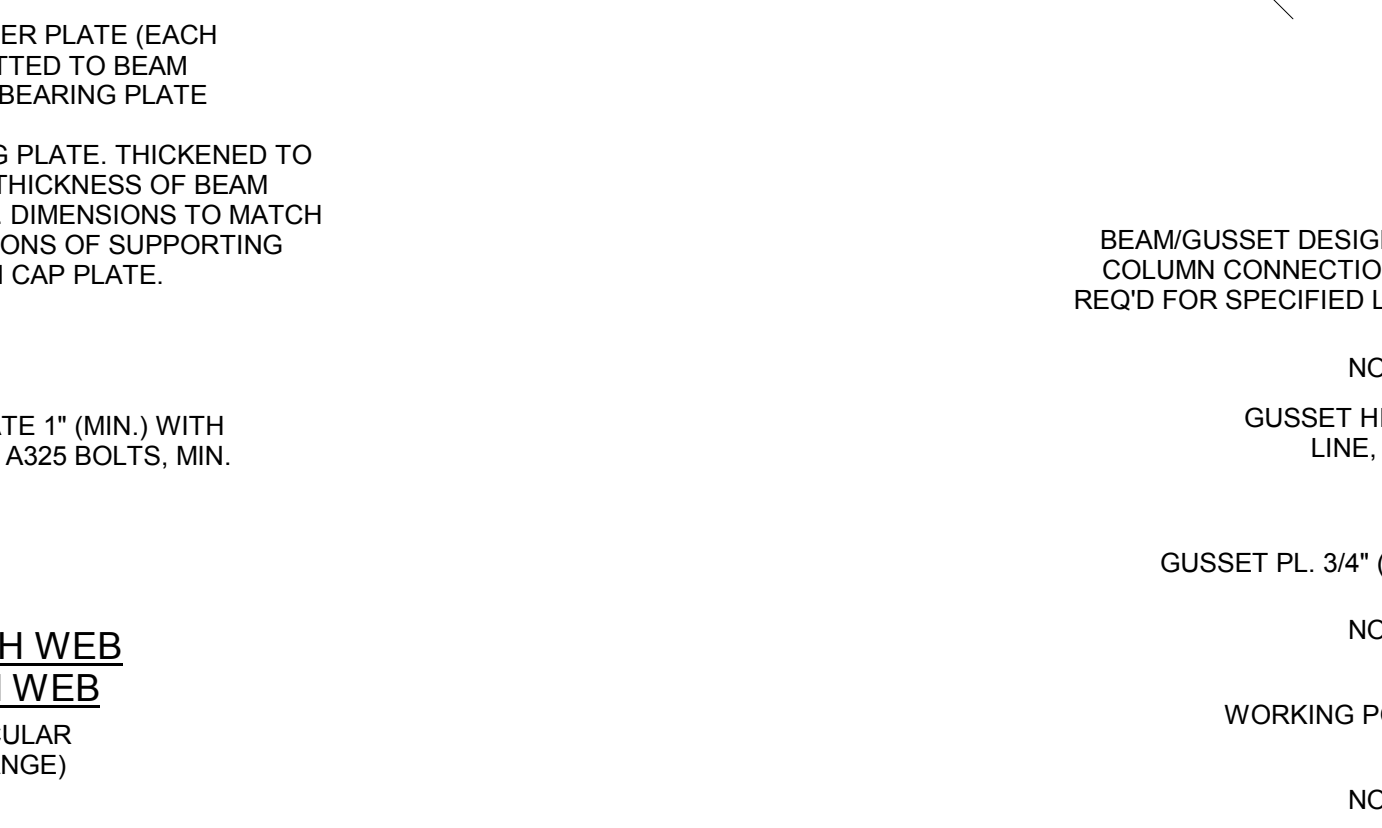
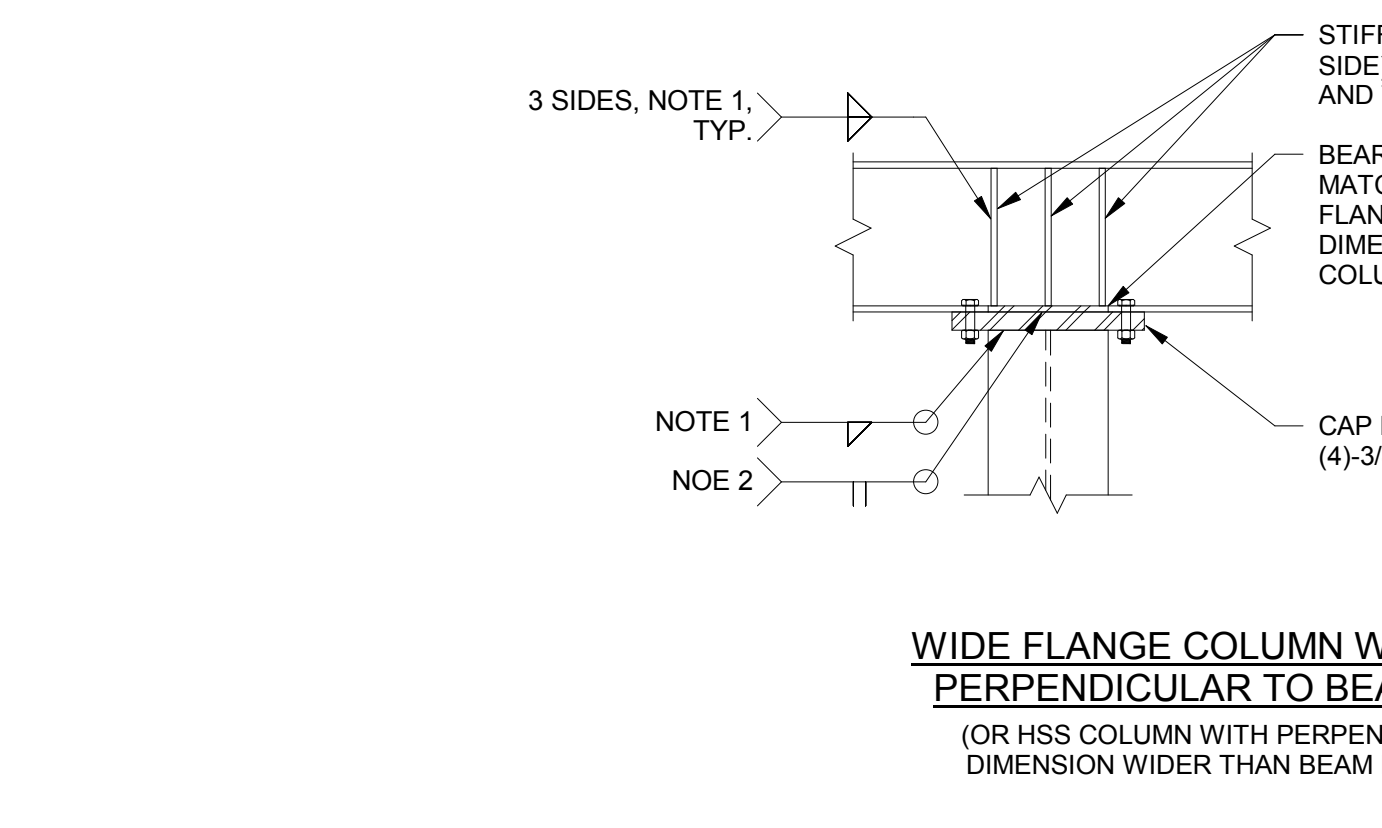
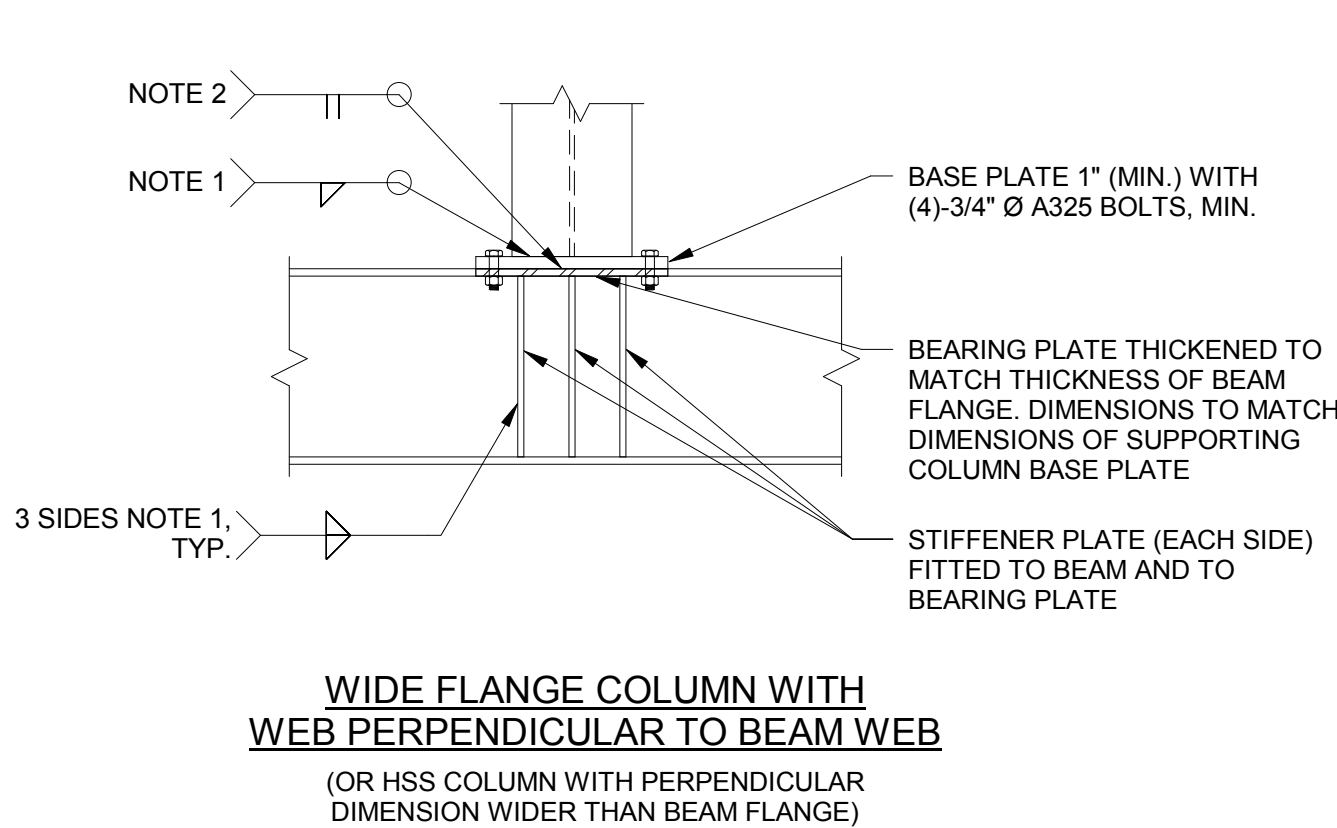
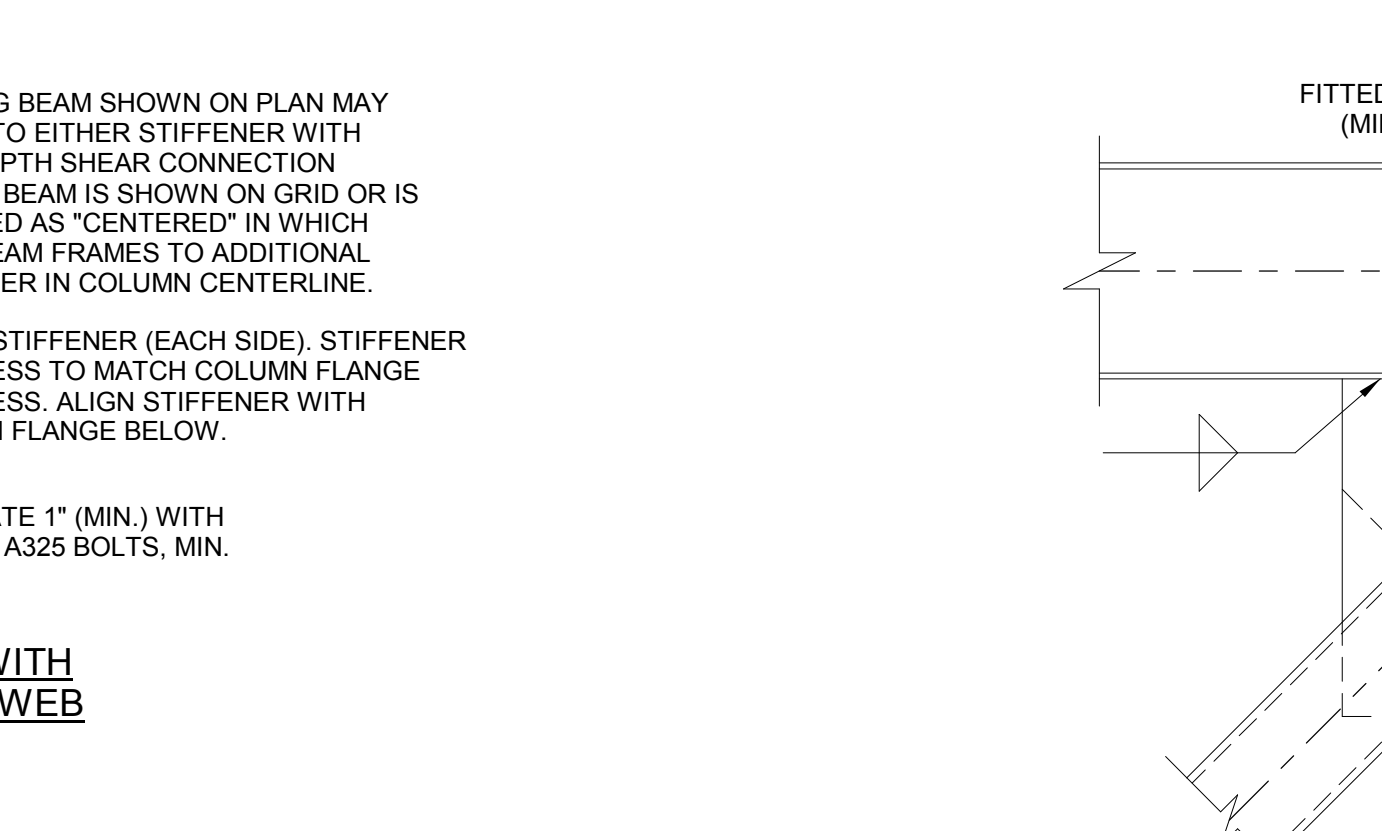
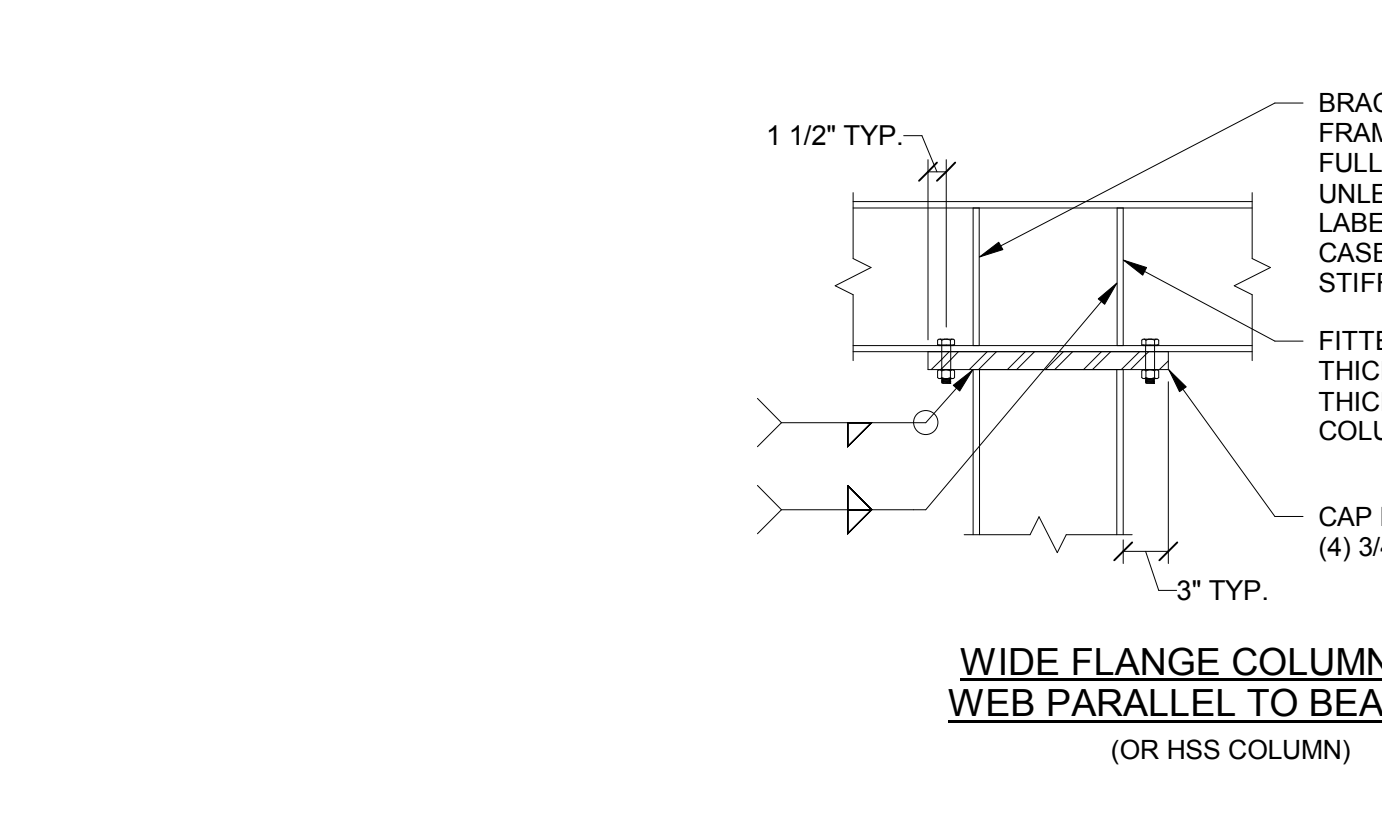
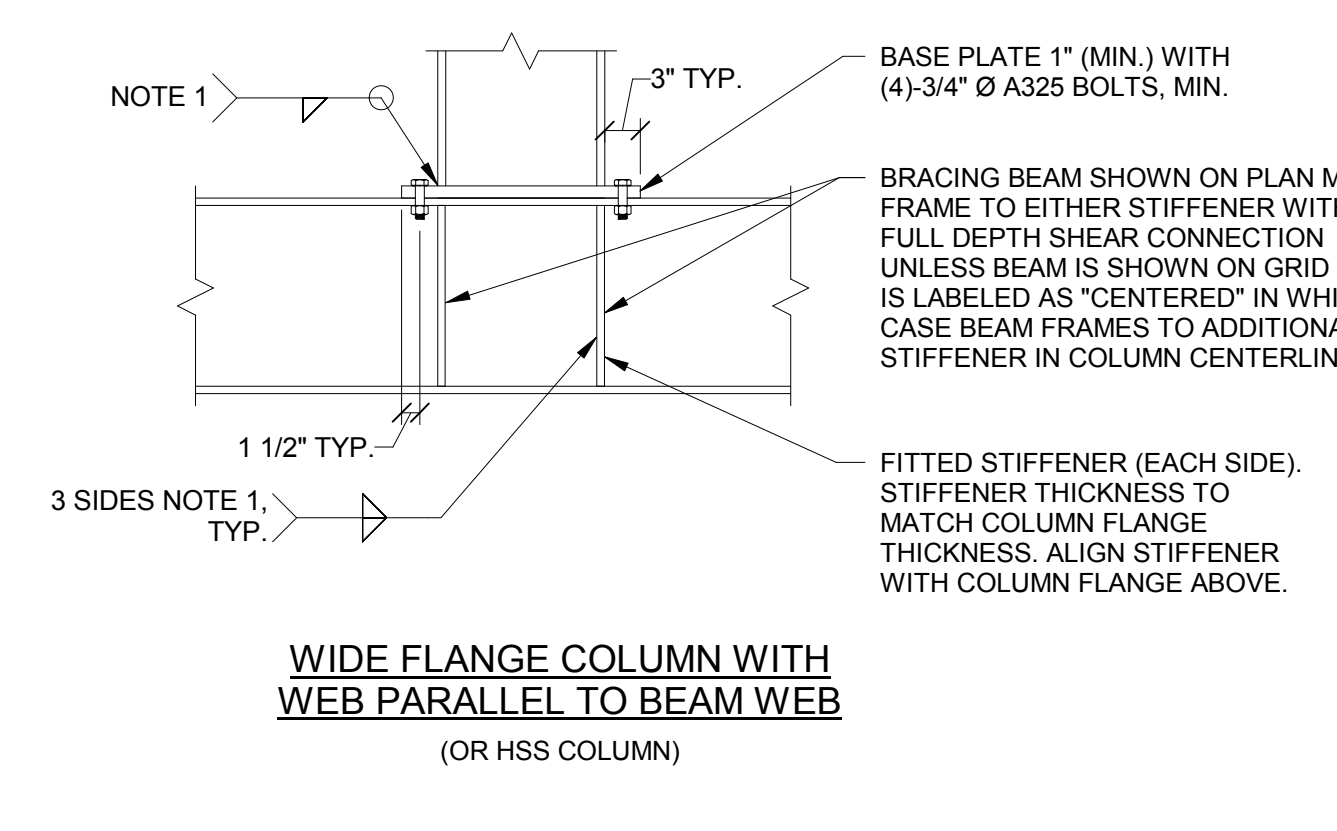


6 HSS TO HSS COLUMN CONNECTION
 NOT TO SCALE

5 HSS TO WIDE FLANGE CONNECTION
 NOT TO SCALE



4 HSS TUBE TO COLUMN CONNECTION
 NOT TO SCALE

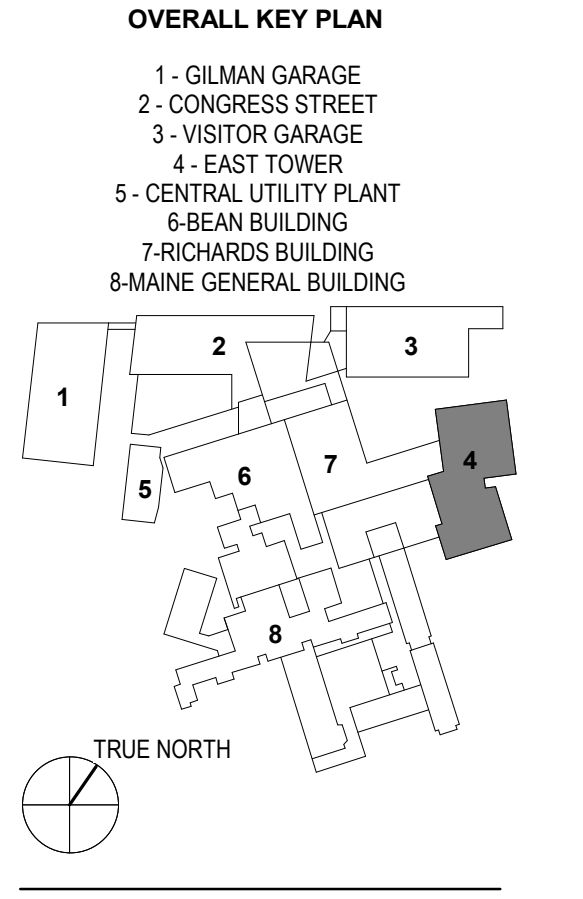
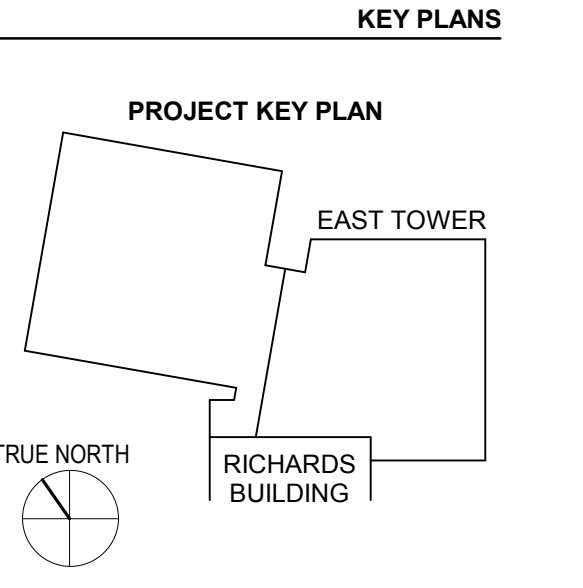
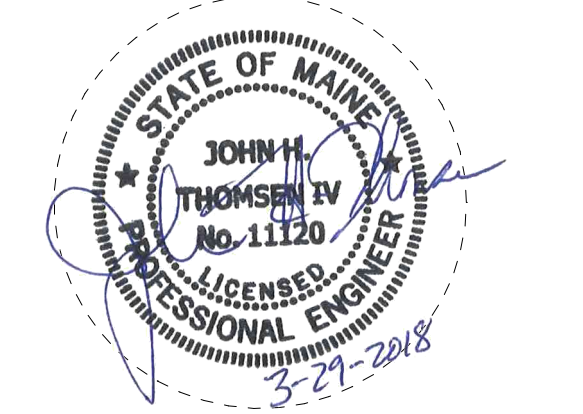


3 TYPICAL COLUMN OVER BEAM
 NOT TO SCALE

2 TYPICAL BEAM OVER COLUMN
 NOT TO SCALE

1 BRACED FRAME CONNECTION DETAILS
 NOT TO SCALE

PROJECT TITLE
East Tower 6 & 7 Addition
 22 Bramhall Street
 Portland, ME 04102



CONSTRUCTION DOCUMENTS
 JANUARY 28, 2018

| NO. | ISSUE | DATE |
|------------|------------|------|
| Job Number | 152181.000 | |
| Drawn | REE | |
| Checked | BMJ | |
| Approved | JHT | |

STEEL TYPICAL DETAILS

SHEET NUMBER
S00-22