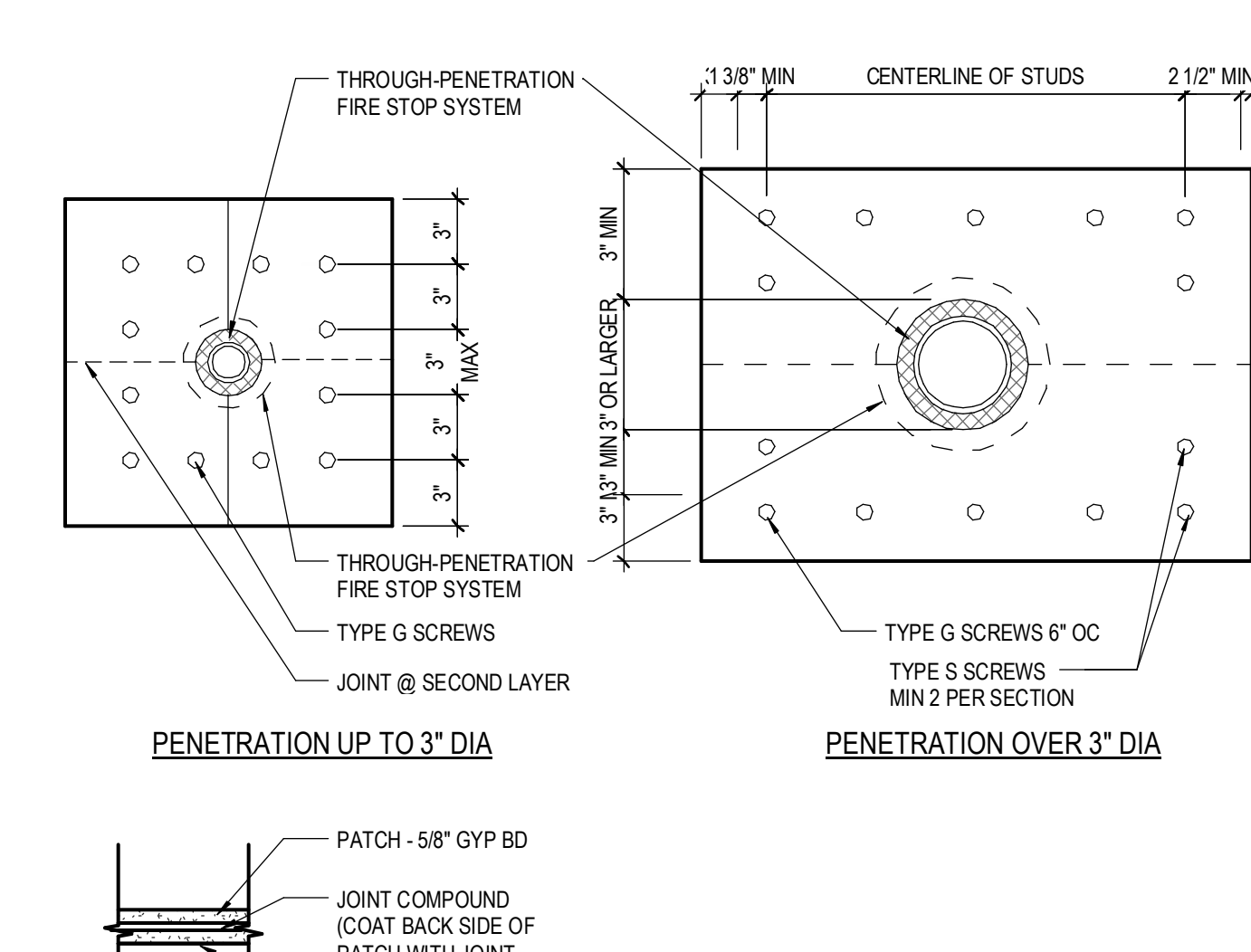
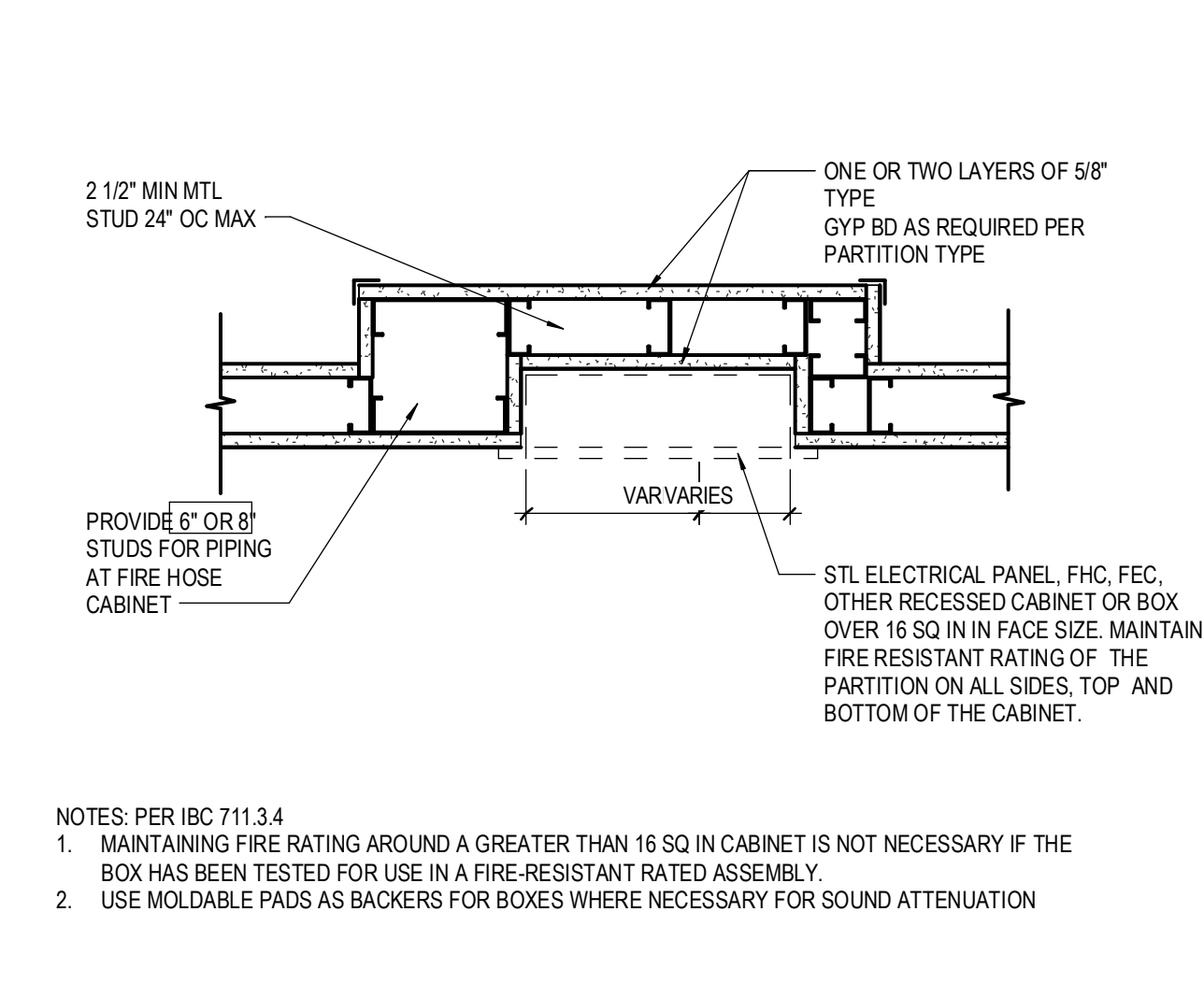




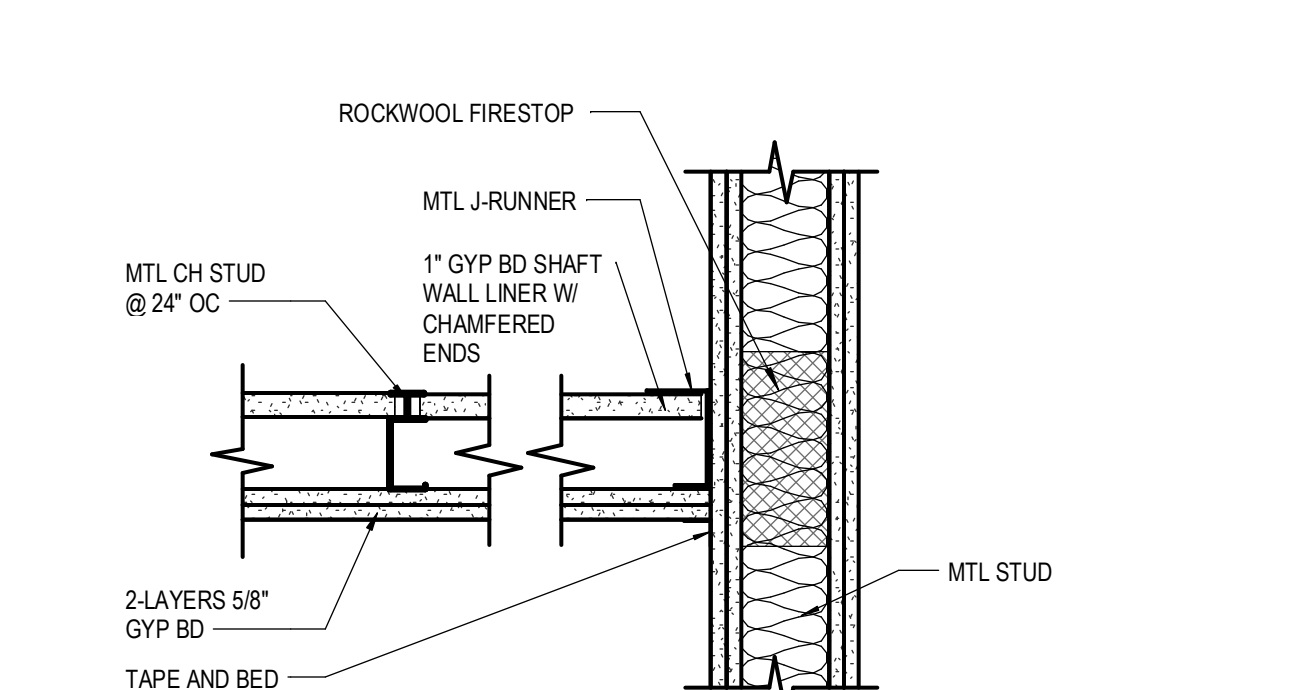
23 SHAFT WALL SECTION  
1 1/2" = 1'-0"



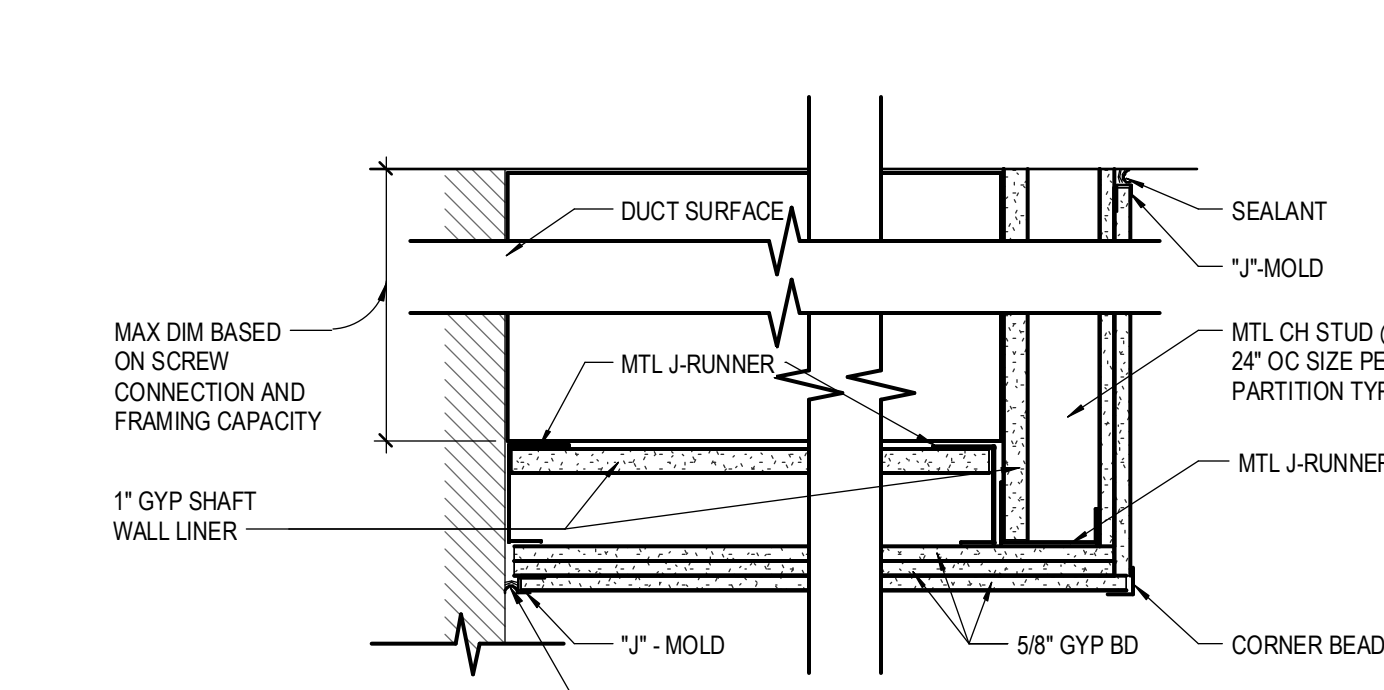
20 PENETRATION DETAIL W/ PATCH  
1 1/2" = 1'-0"



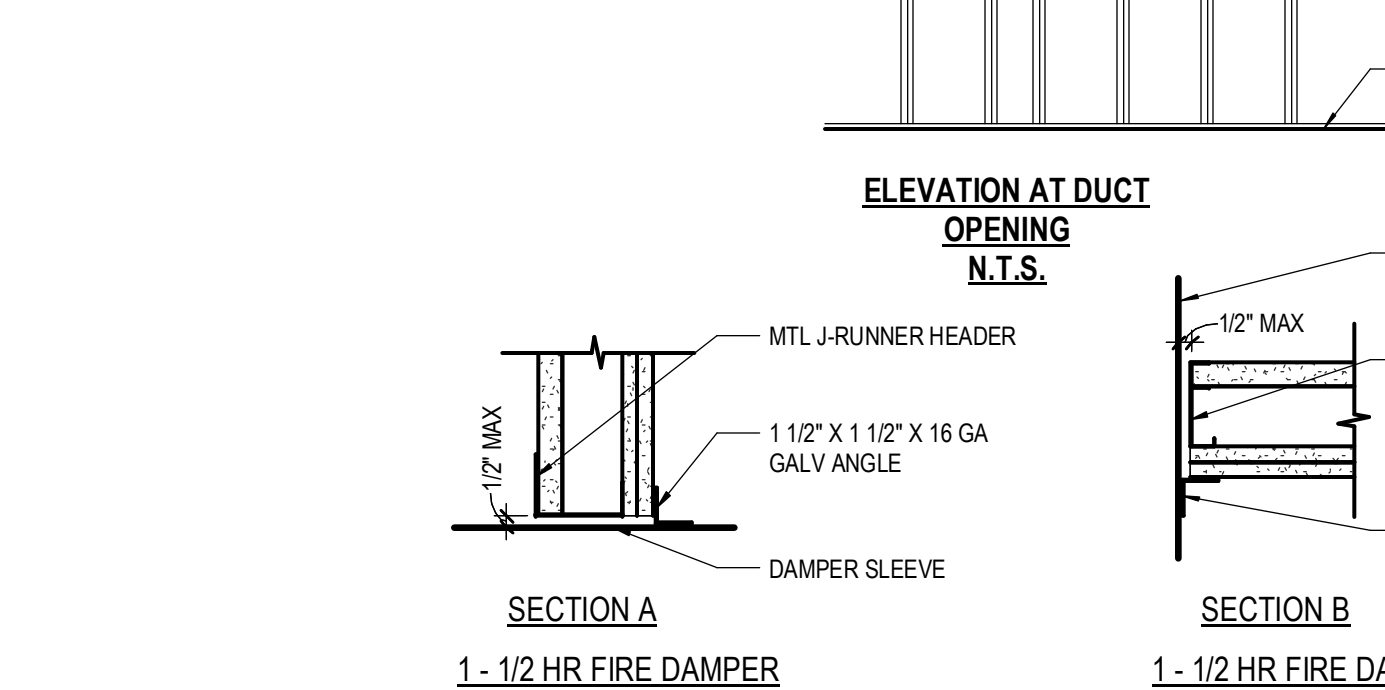
21 RECESSED WALL CABINET DETAIL  
1 1/2" = 1'-0"



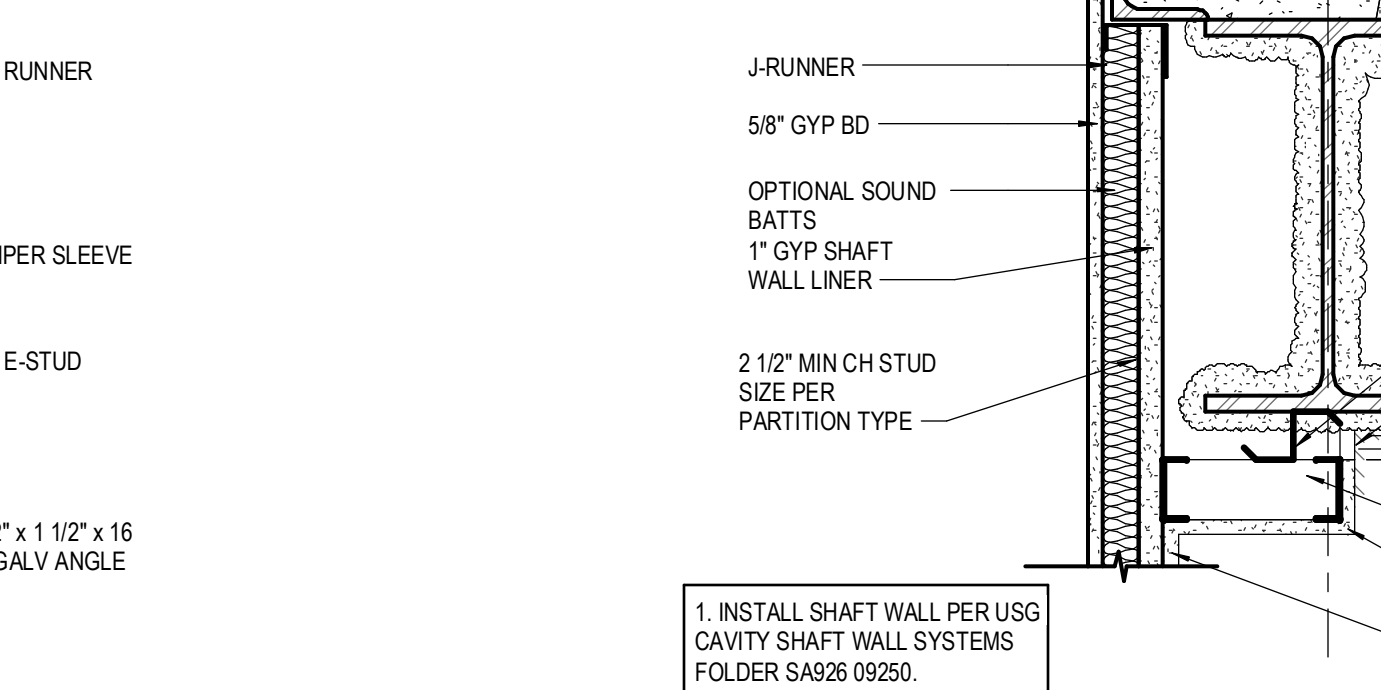
15 PARTITION PLAN DETAIL  
1 1/2" = 1'-0"



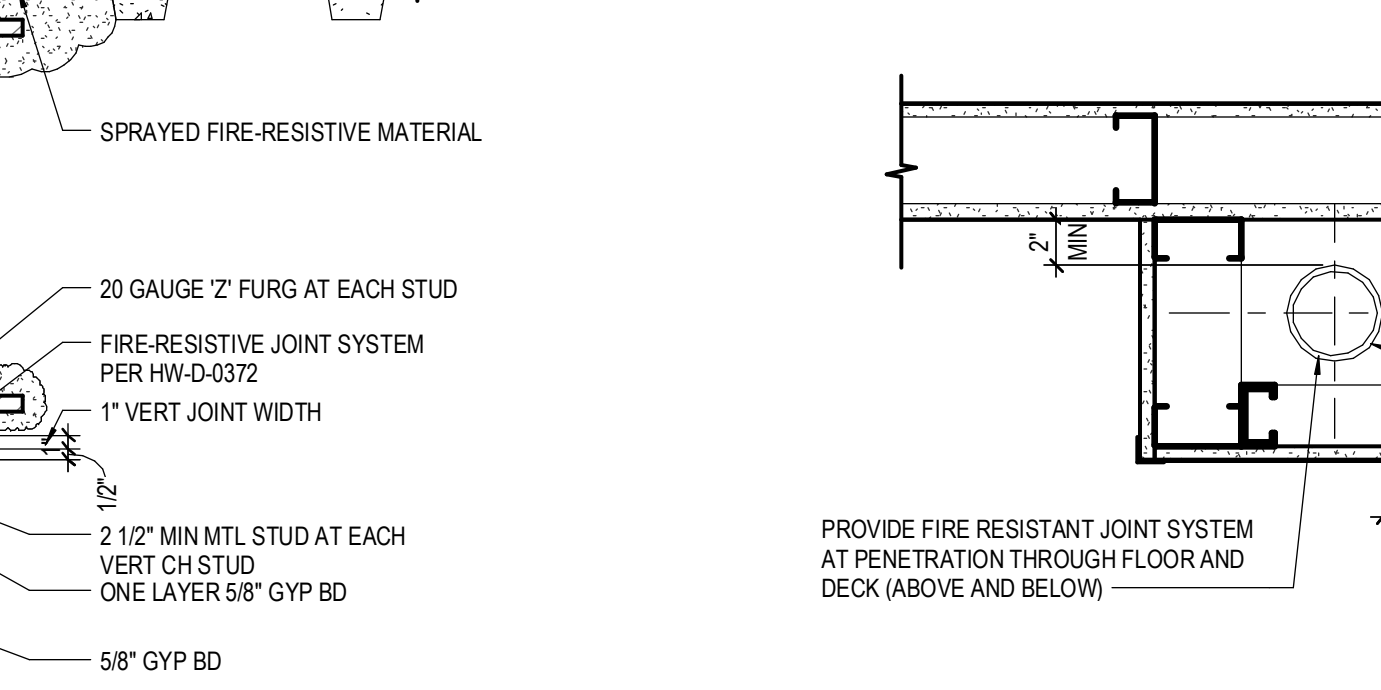
19 HORIZONTAL METAL DUCT ENCLOSURE  
1 1/2" = 1'-0"



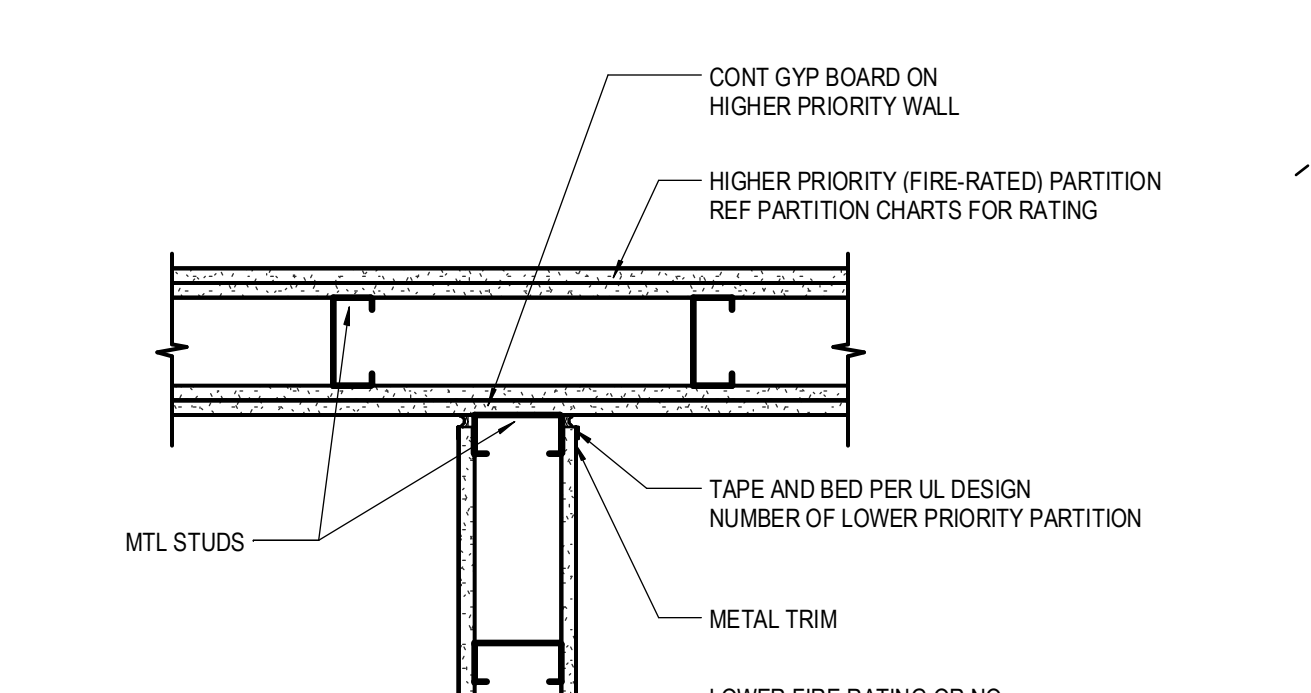
18 DUCT OPENING THRU SHAFT WALL  
1 1/2" = 1'-0"



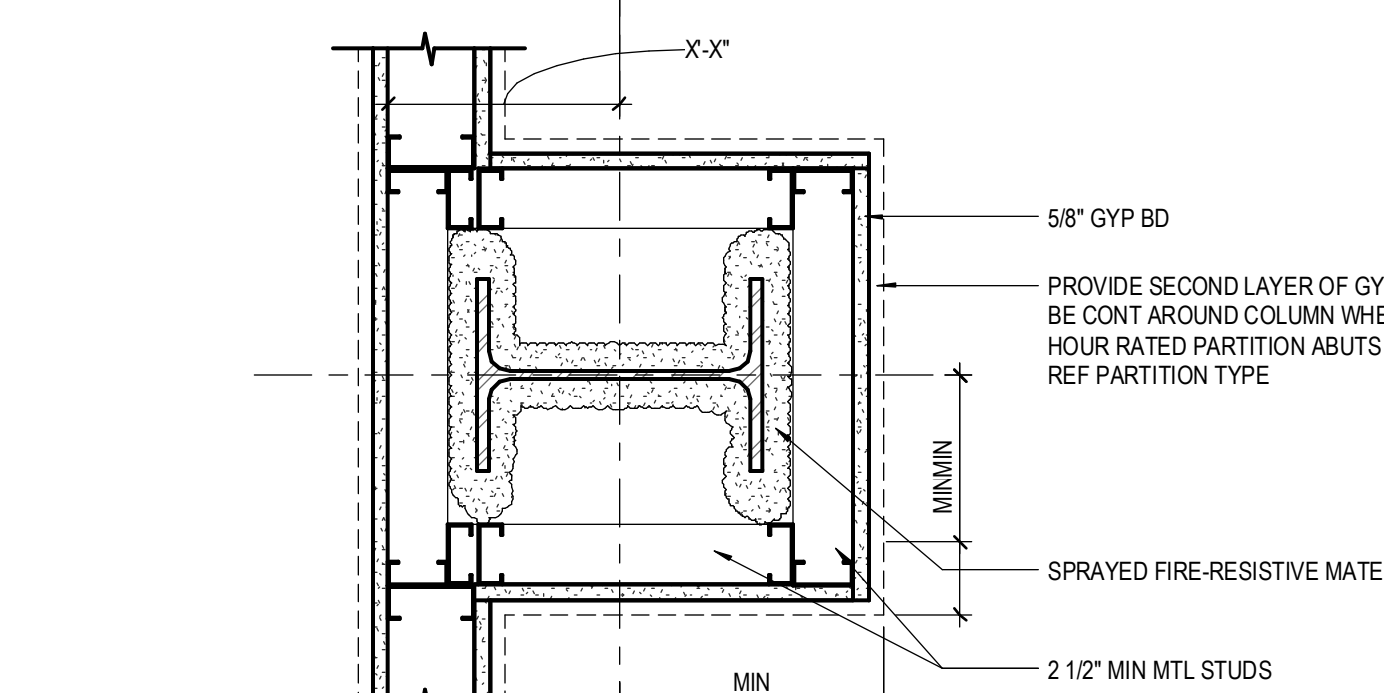
17 SHAFT WALL @ FLOOR OPENING  
1 1/2" = 1'-0"



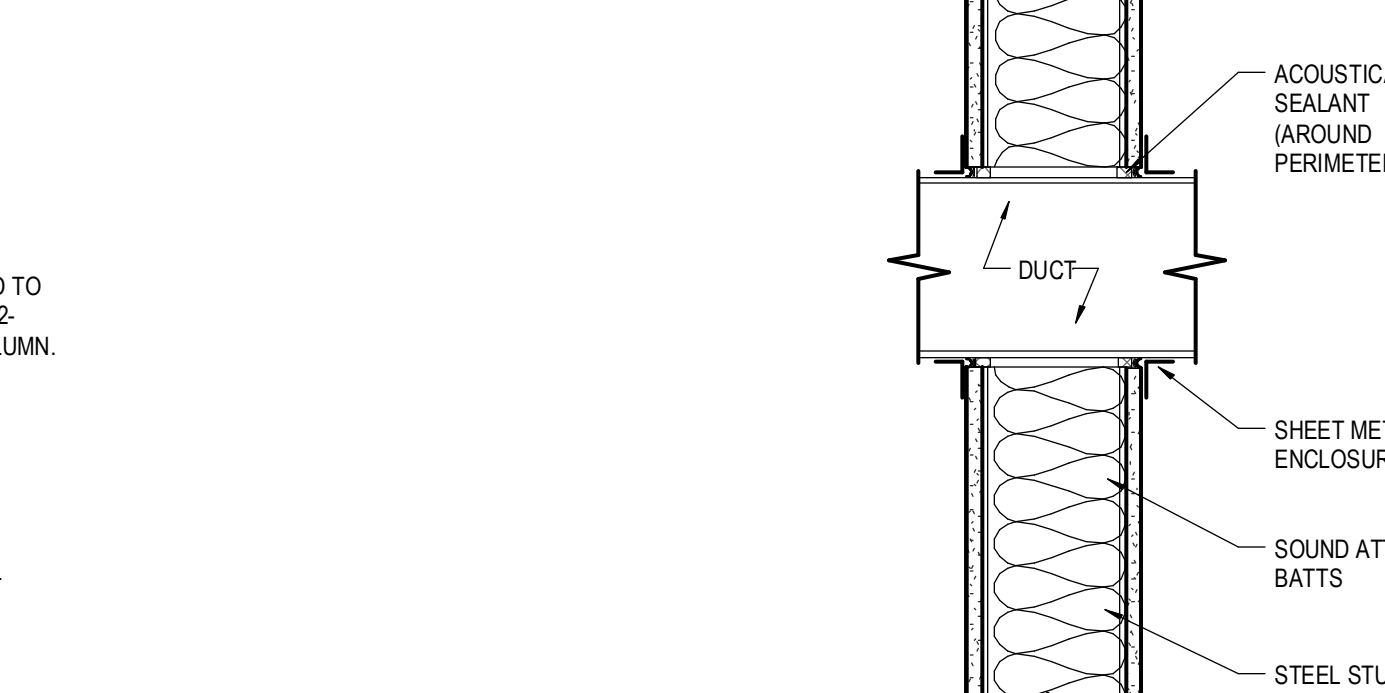
16 PIPE ENCLOSURE PLAN DETAIL  
1 1/2" = 1'-0"



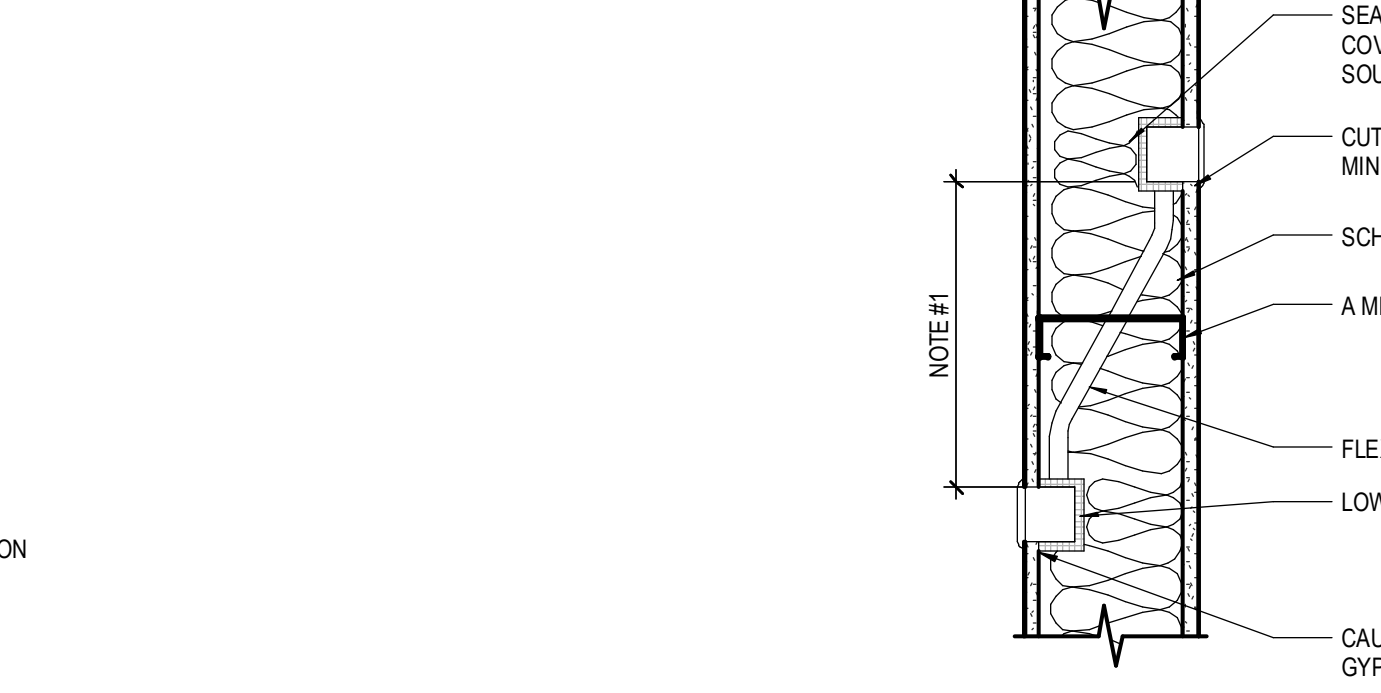
15 PARTITION PLAN DETAIL  
1 1/2" = 1'-0"



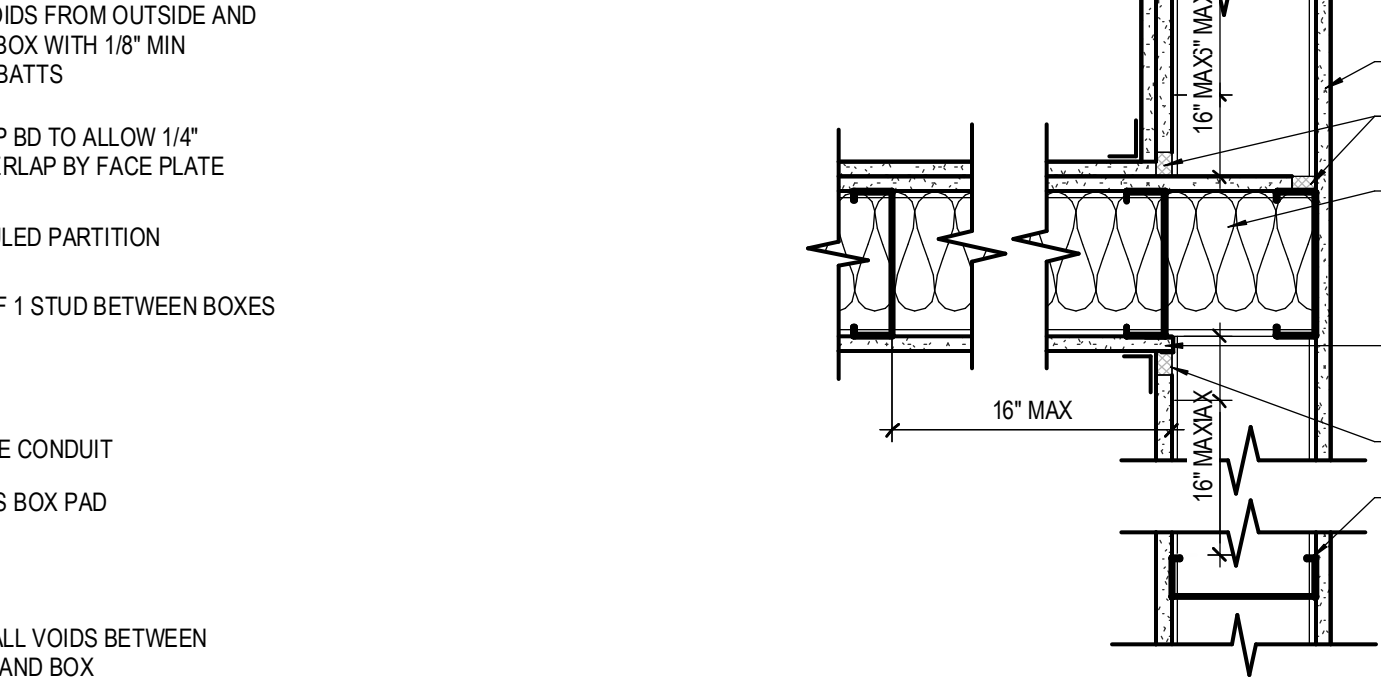
14 PARTITION SECTION DETAIL  
1 1/2" = 1'-0"



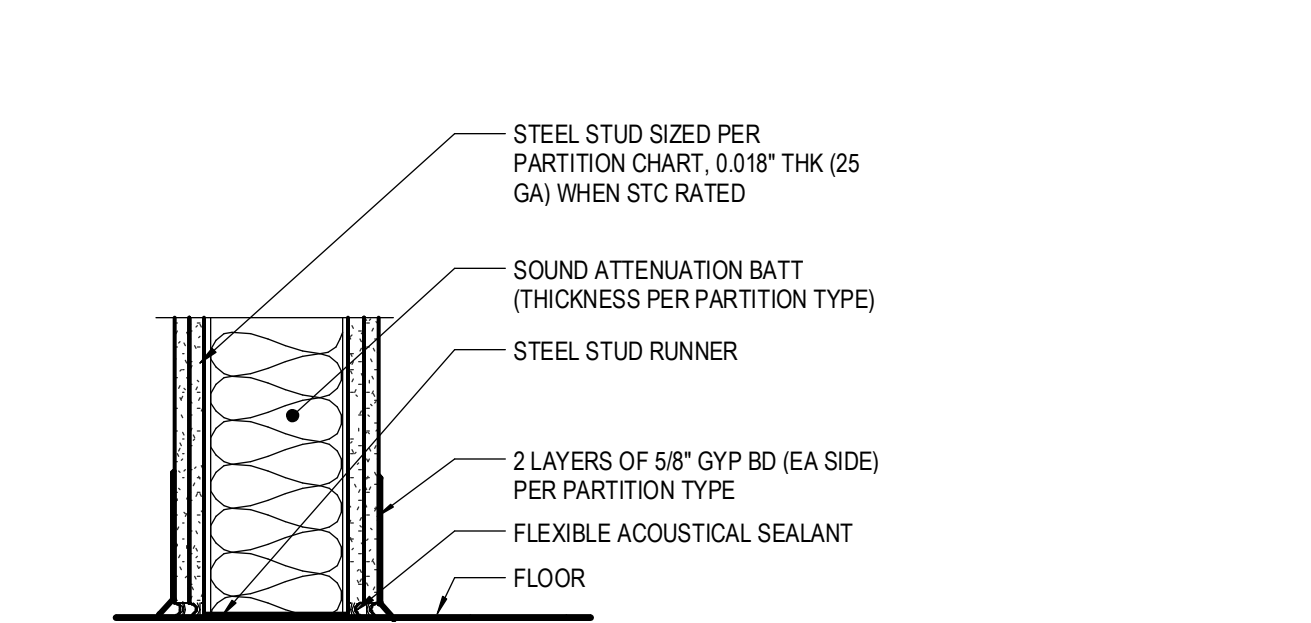
13 ACOUSTICAL PARTITION SECTION  
1 1/2" = 1'-0"



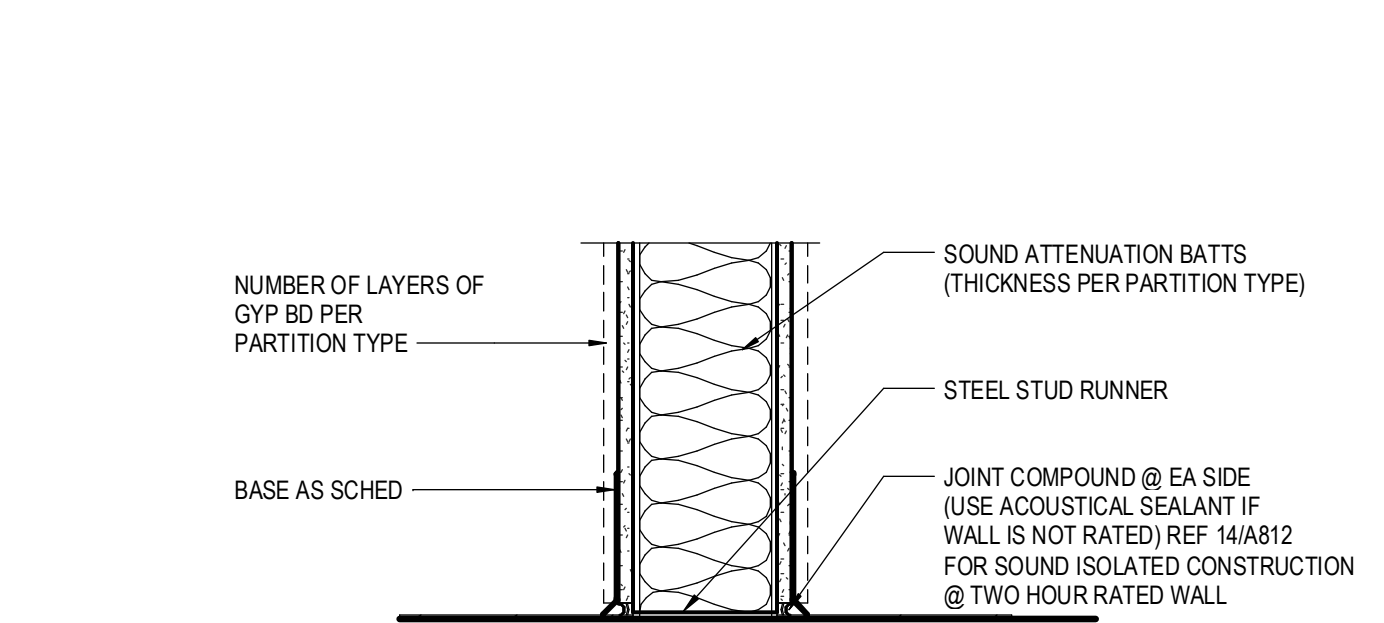
12 ACOUSTICAL PARTITION PLAN DETAIL  
1 1/2" = 1'-0"



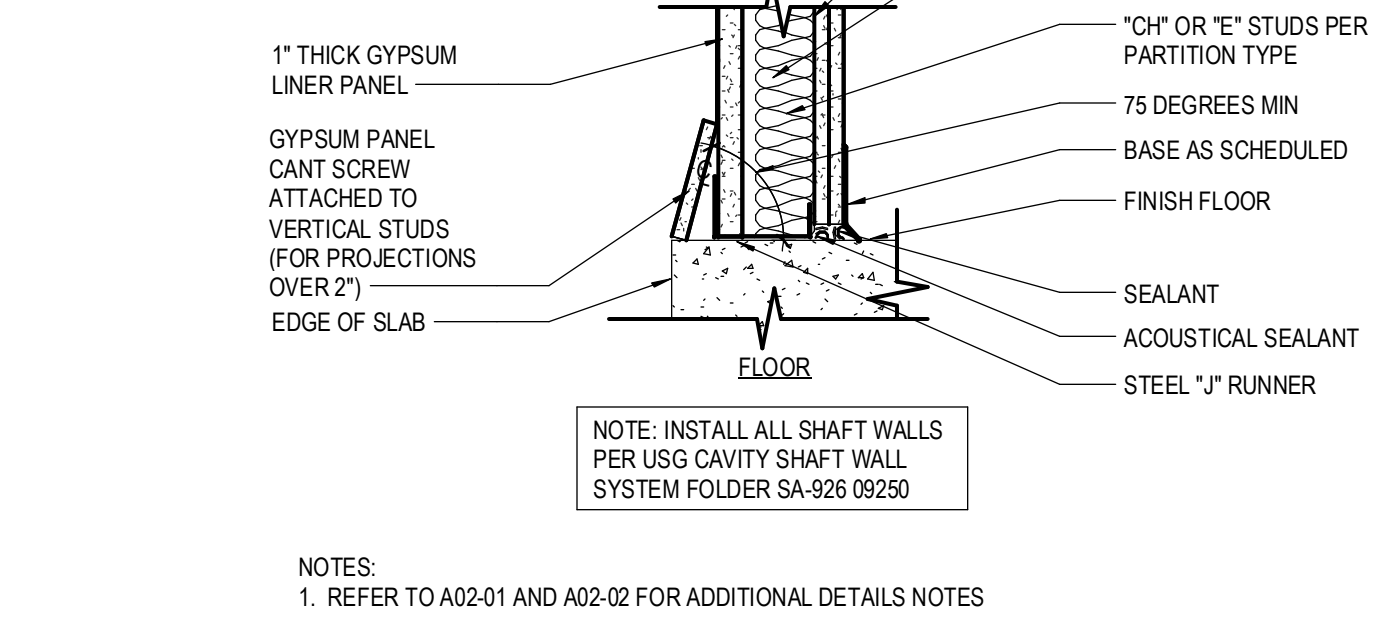
11 ACOUSTICAL PARTITION PLAN DETAILS  
1 1/2" = 1'-0"



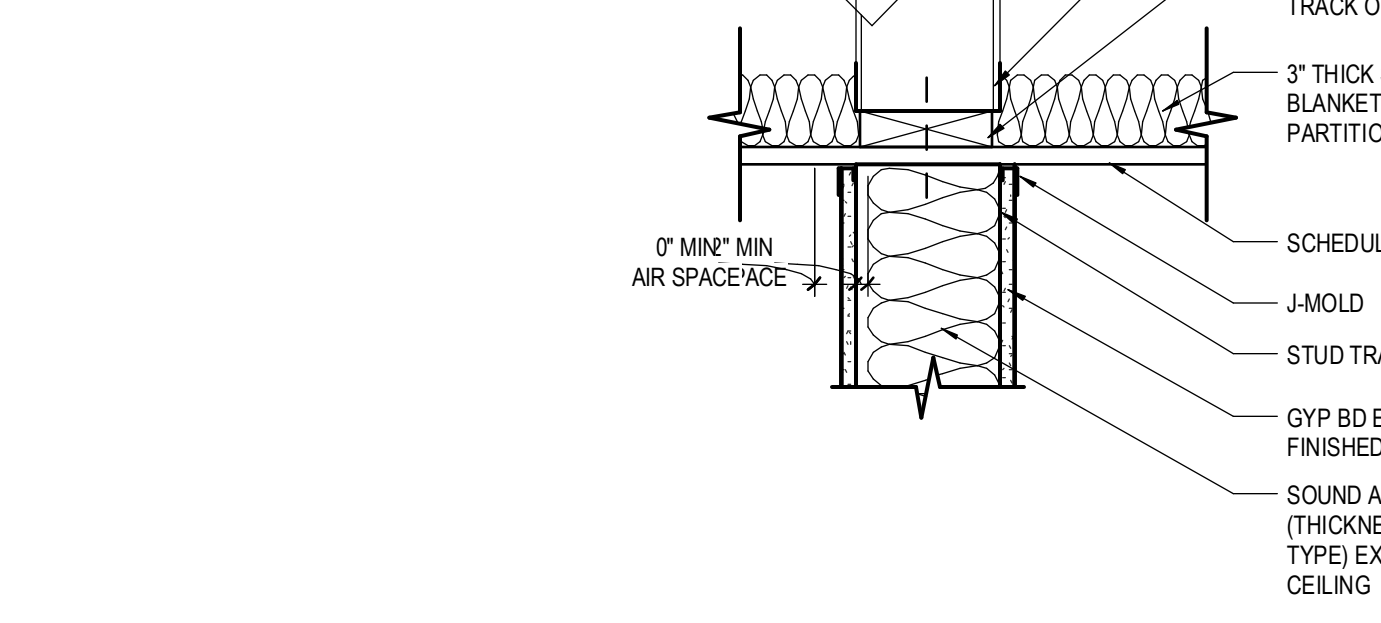
10 ACOUSTICAL PARTITION FLOOR SECTION  
1 1/2" = 1'-0"



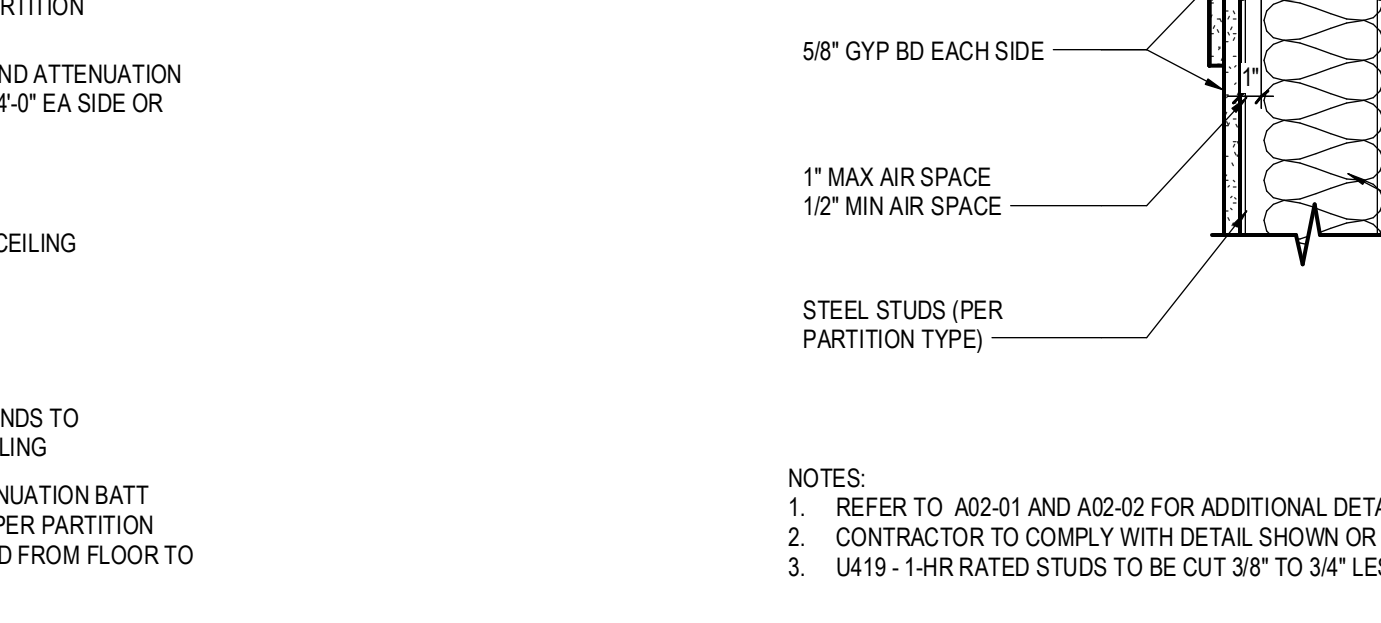
9 PARTITION FLOOR SECTION  
1 1/2" = 1'-0"



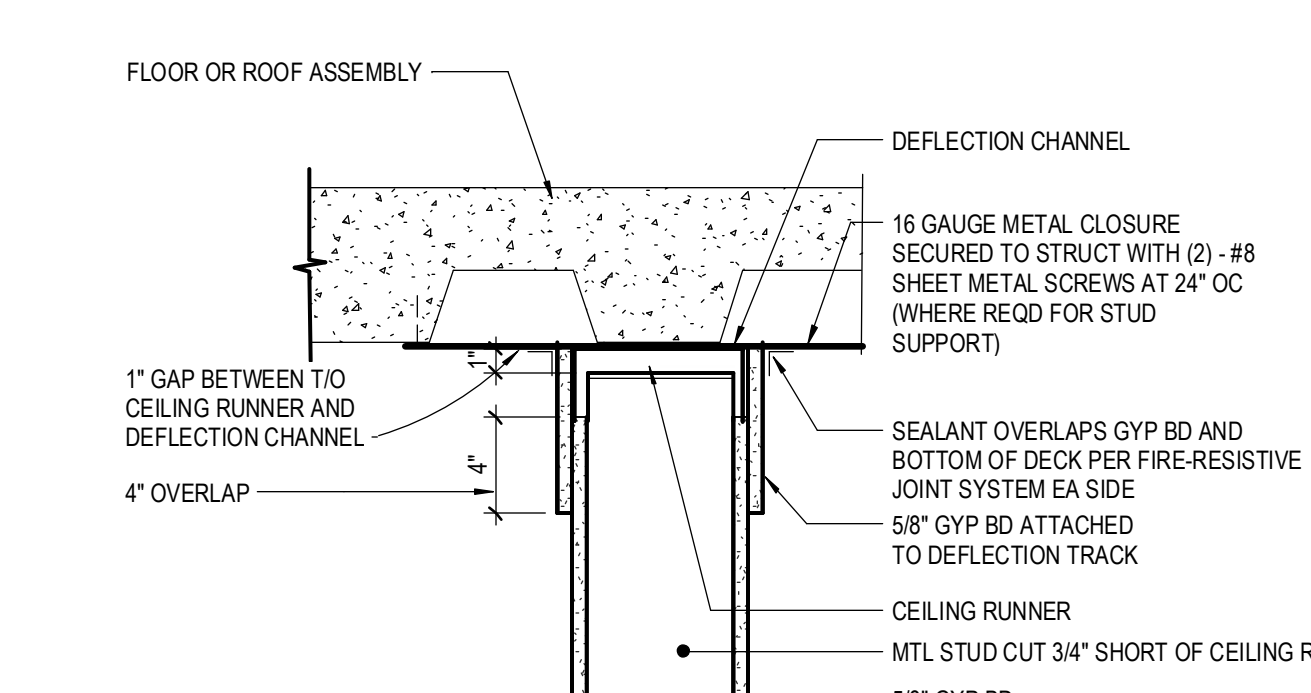
8 PARTITION FLOOR SECTION  
1 1/2" = 1'-0"



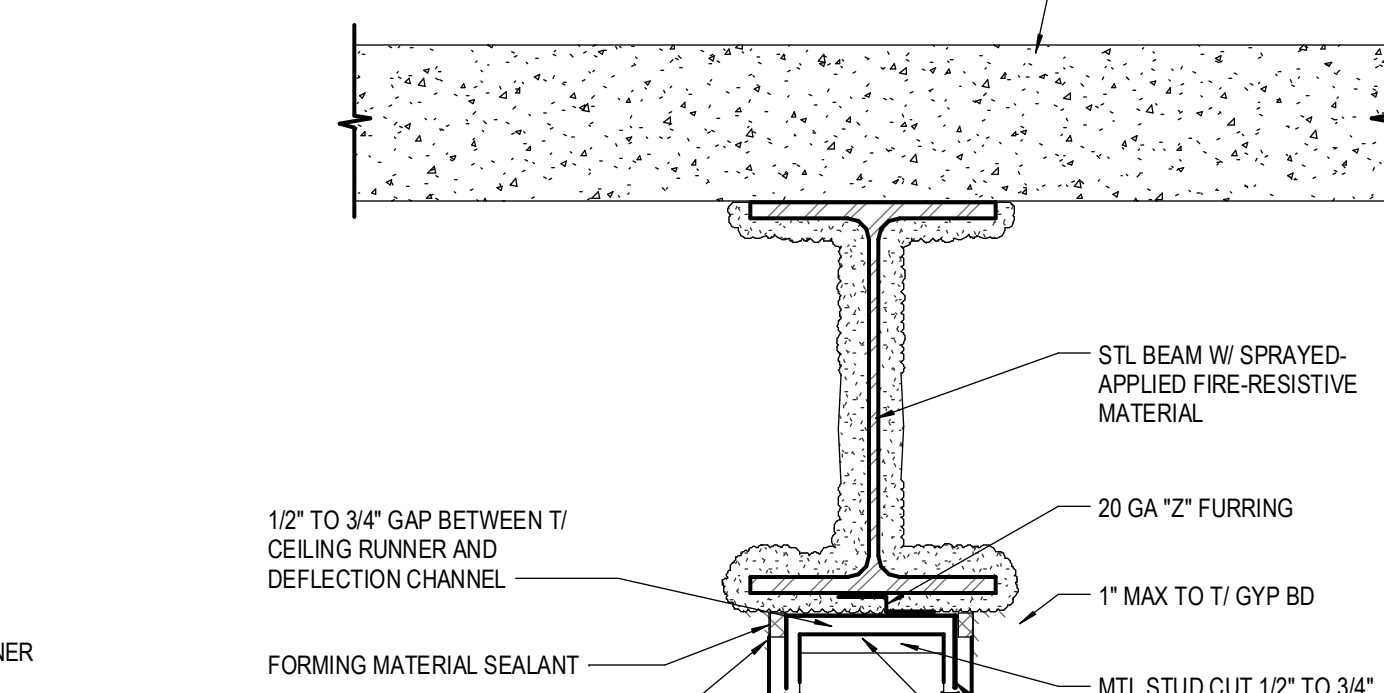
7 PARTITION HEAD SECTION  
1 1/2" = 1'-0"



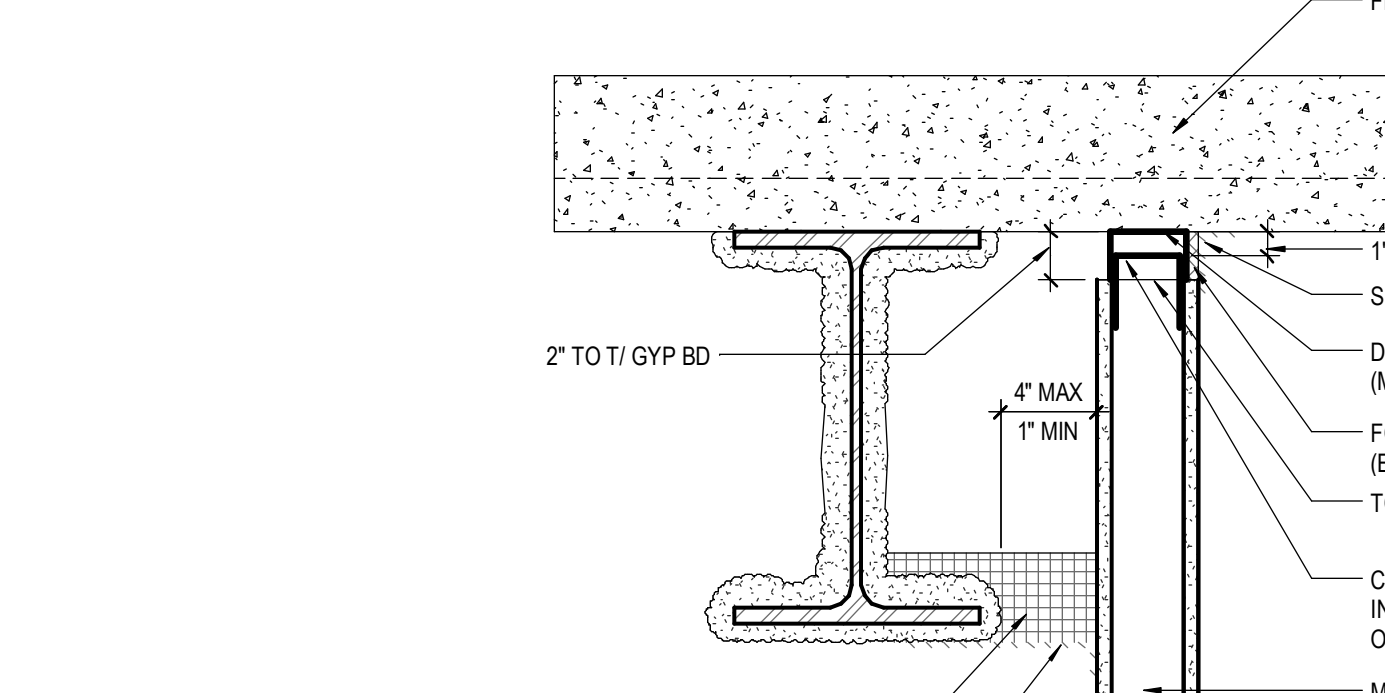
6 PARTITION HEAD SECTION  
1 1/2" = 1'-0"



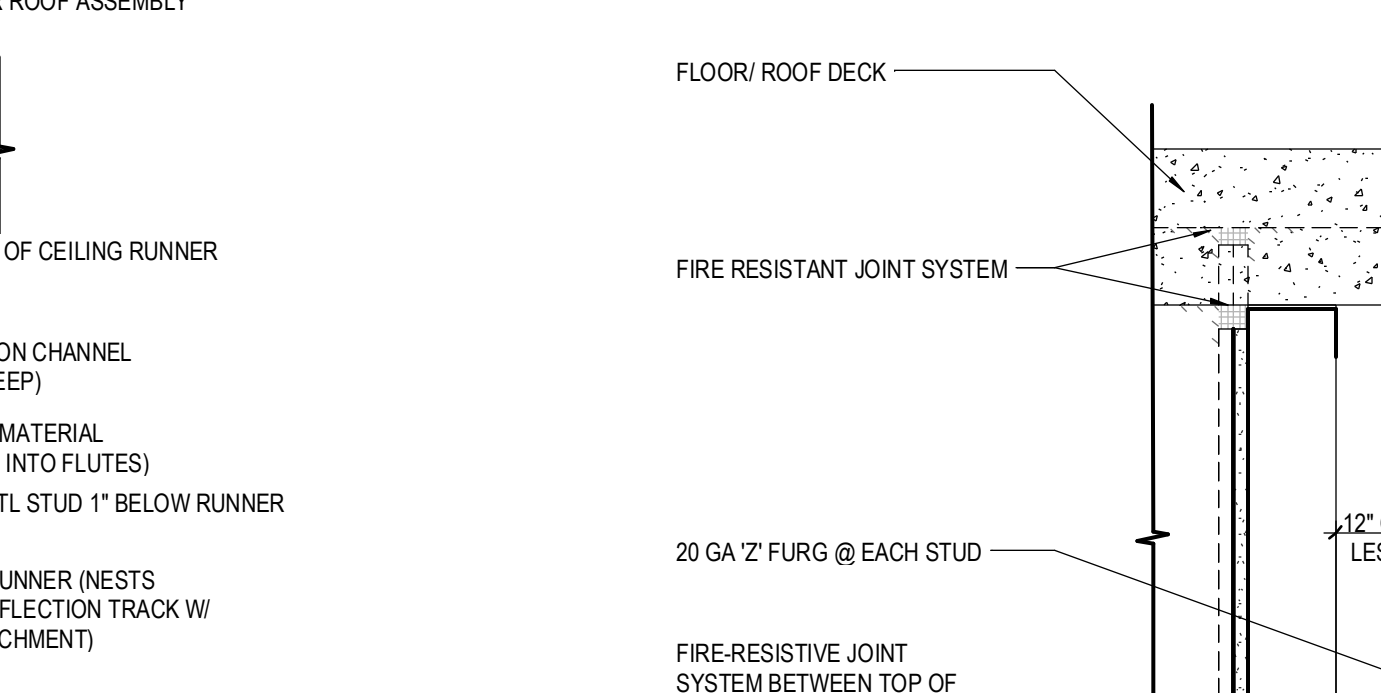
5 PARTITION SECTION DETAIL  
1 1/2" = 1'-0"



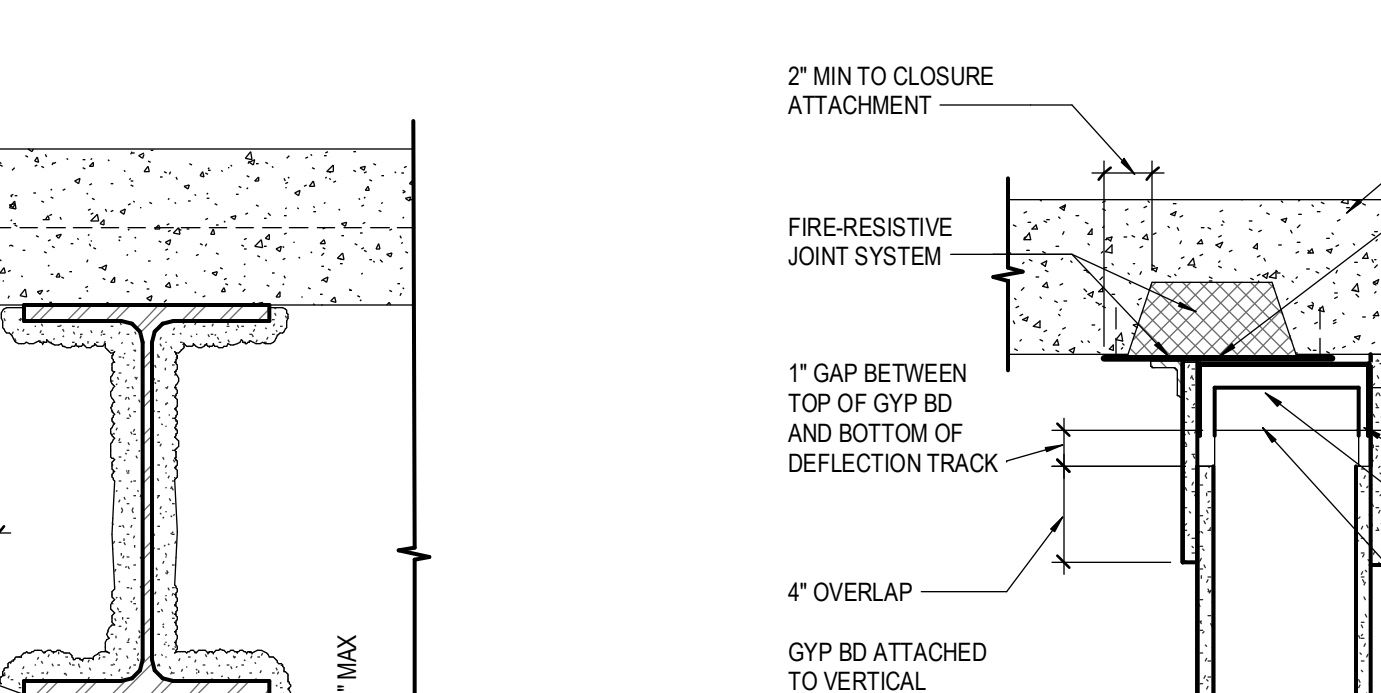
4 PARTITION SECTION DETAIL  
1 1/2" = 1'-0"



3 PARTITION SECTION DETAIL  
1 1/2" = 1'-0"



2 PARTITION SECTION DETAIL  
1 1/2" = 1'-0"



1 SLIP TRACK AT RATED PARTITION  
1 1/2" = 1'-0"

**PERKINS + WILL**  
225 Franklin Street, Suite 1100  
Boston, MA 02110  
617.478.0300  
www.perkinswill.com

**CLIENT**  
Maine Medical Center  
MaineHealth

22 Bramhall Street  
Portland ME 04102

**CONSULTANTS**  
CIVIL LANDSCAPE ARCHITECT  
Sebago Technics  
75 John Roberts Road, Suite  
1A, South Portland ME 04106  
STRUCTURAL/ENR/MECHANICAL/ELECTRICAL CONSULTANT  
Simpson Gumpertz & Heger Inc.  
41 Seyon Street, Building 1, Suite 500,  
Waltham MA 02453  
MEPP ENGINEER CODE  
AKF Group LLC  
99 Bedford Street, 2nd Floor, Boston MA 02111  
CONSTRUCTION MANAGER  
Turner Construction  
2 Seaport Lane, Suite 200, Boston MA 02210  
ELEVATOR CONSULTANT  
VDA (Van Dusen & Associates)  
101 Summer Street, 4th Floor, Boston MA  
02110  
COST ESTIMATOR  
D. G. Jones International  
3 Baldwin Green Common, Suite 202, Woburn MA 01801

**PROJECT TITLE**  
East Tower 6 & 7  
Addition  
22 Bramhall Street  
Portland ME 04102

**KEY PLANS**  
EAST TOWER  
RICHARDS BUILDING

**OVERALL KEY PLAN**  
1 - GILMAN GARAGE  
2 - CONGRESS STREET  
3 - VISITOR GARAGE  
4 - EAST TOWER  
5 - CENTRAL UTILITY PLANT  
6 - BEAN BUILDING  
7 - RICHARDS BUILDING  
8 - MAINE GENERAL BUILDING

**CONSTRUCTION DOCUMENTS**  
JANUARY 26, 2018

NO	ISSUE	DATE
Draw Number	152181.000	
Drawn	TEAM	
Checked		
Approved	JK	

**TITLE**  
INTERIOR  
PARTITION  
DETAILS

**SHEET NUMBER**  
A61-11

Copyright 2017 © Perkins + Will