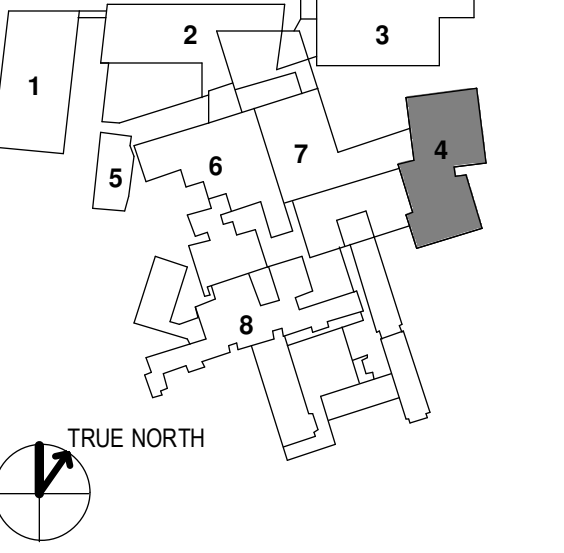
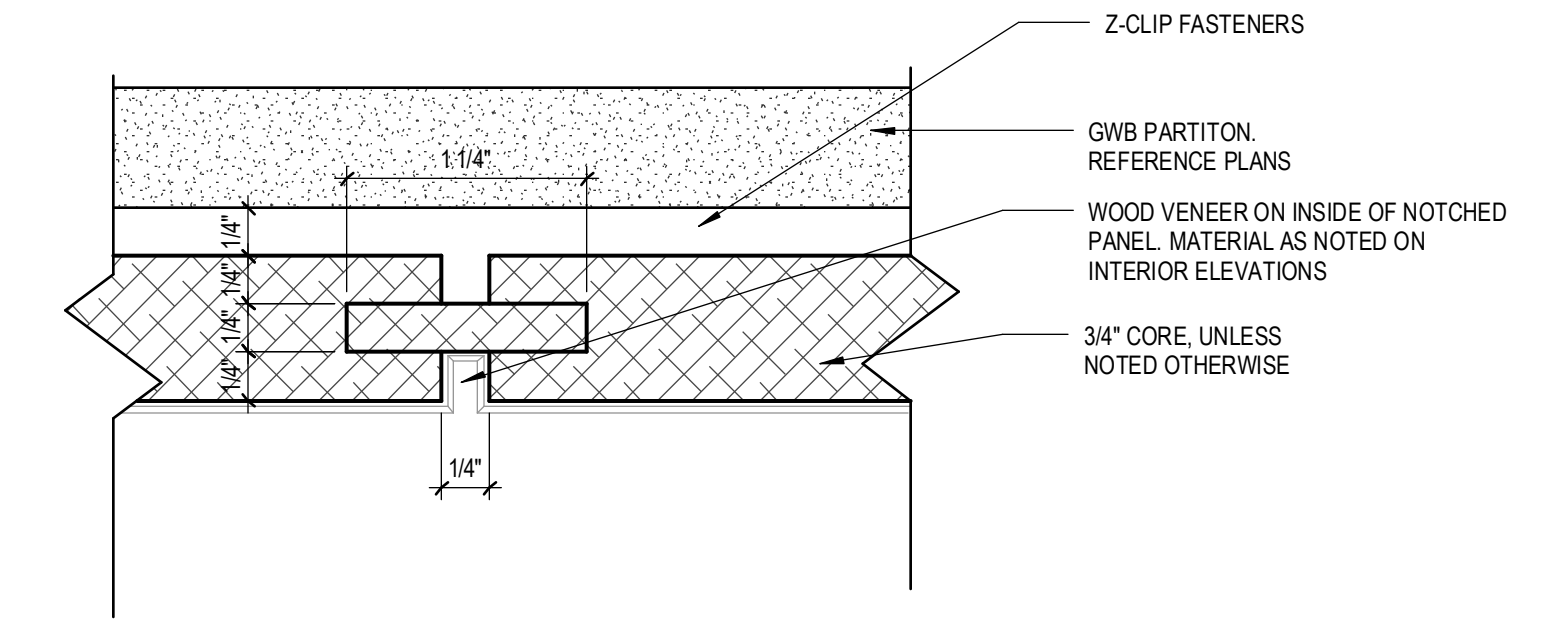


- OVERALL KEY PLAN
- 1 - GILMAN GARAGE
 - 2 - CONGRESS STREET
 - 3 - VISITOR GARAGE
 - 4 - EAST TOWER
 - 5 - CENTRAL UTILITY PLANT
 - 6 - BEAN BUILDING
 - 7 - RICHARDS BUILDING
 - 8 - MAINE GENERAL BUILDING

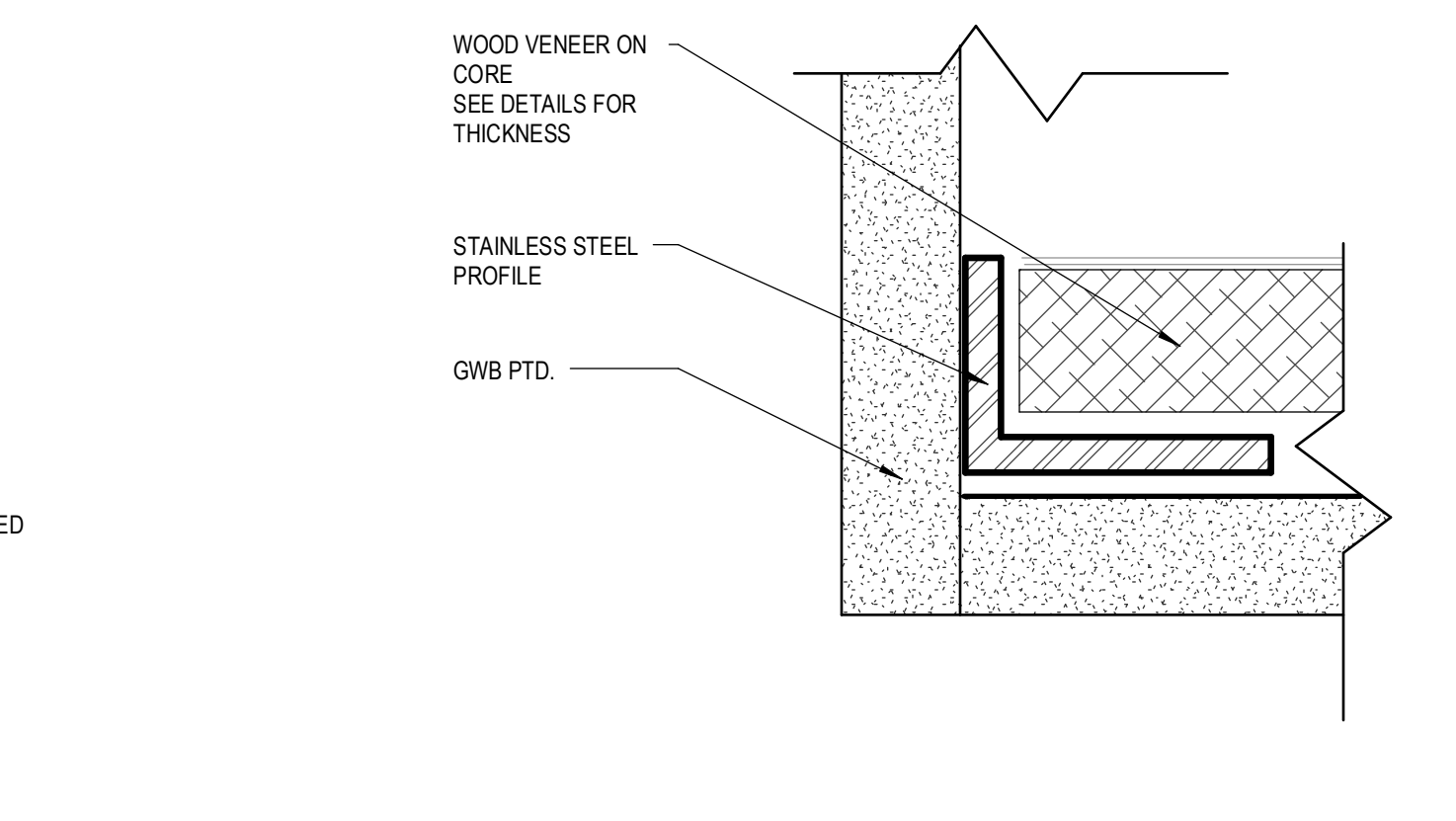


NO	ADDENDUM NO.	DATE
1		3/22/18
	ISSUE	DATE

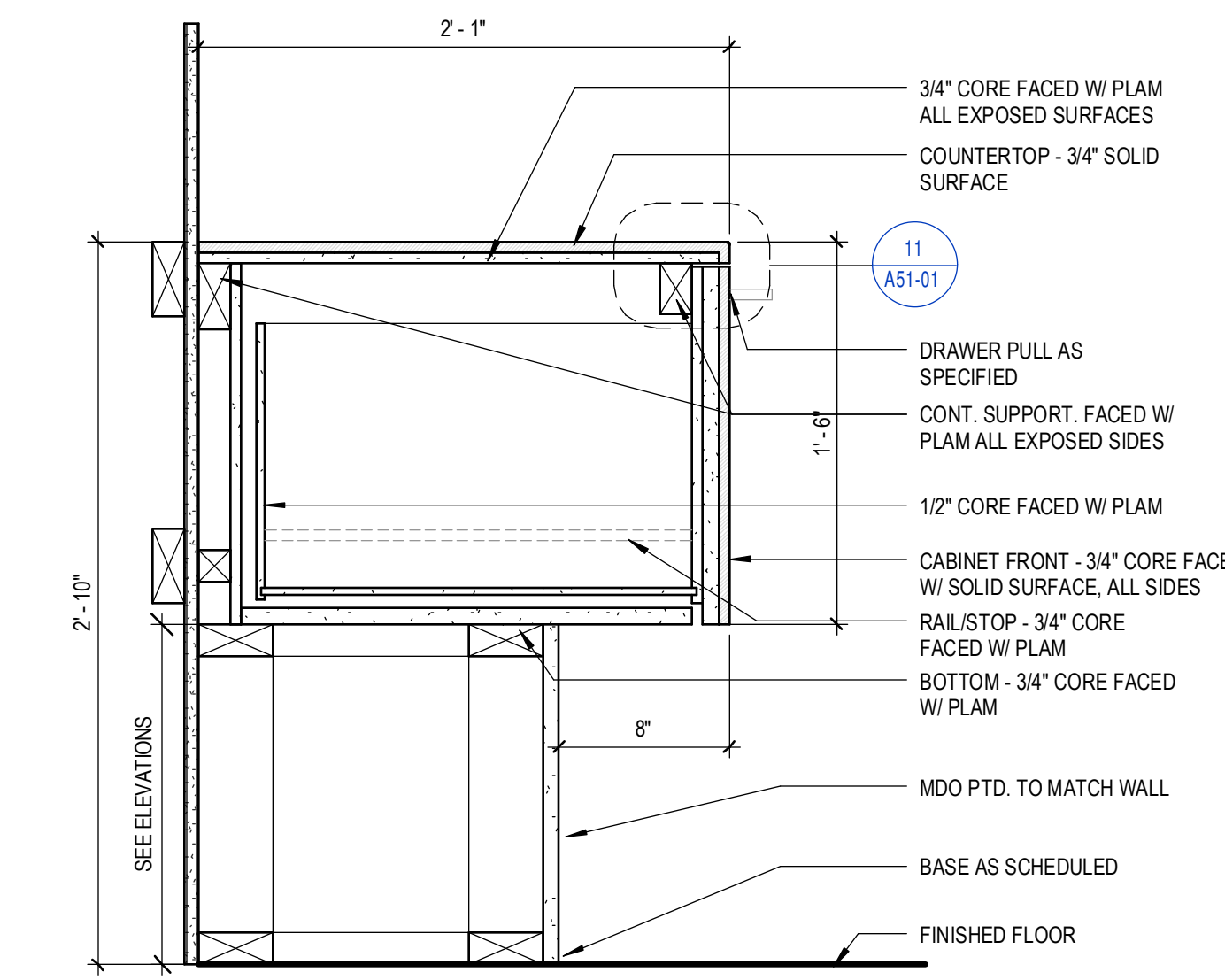
Job Number: 152181.000
 Drawn: TEAM
 Checked: JK
 Approved: JK



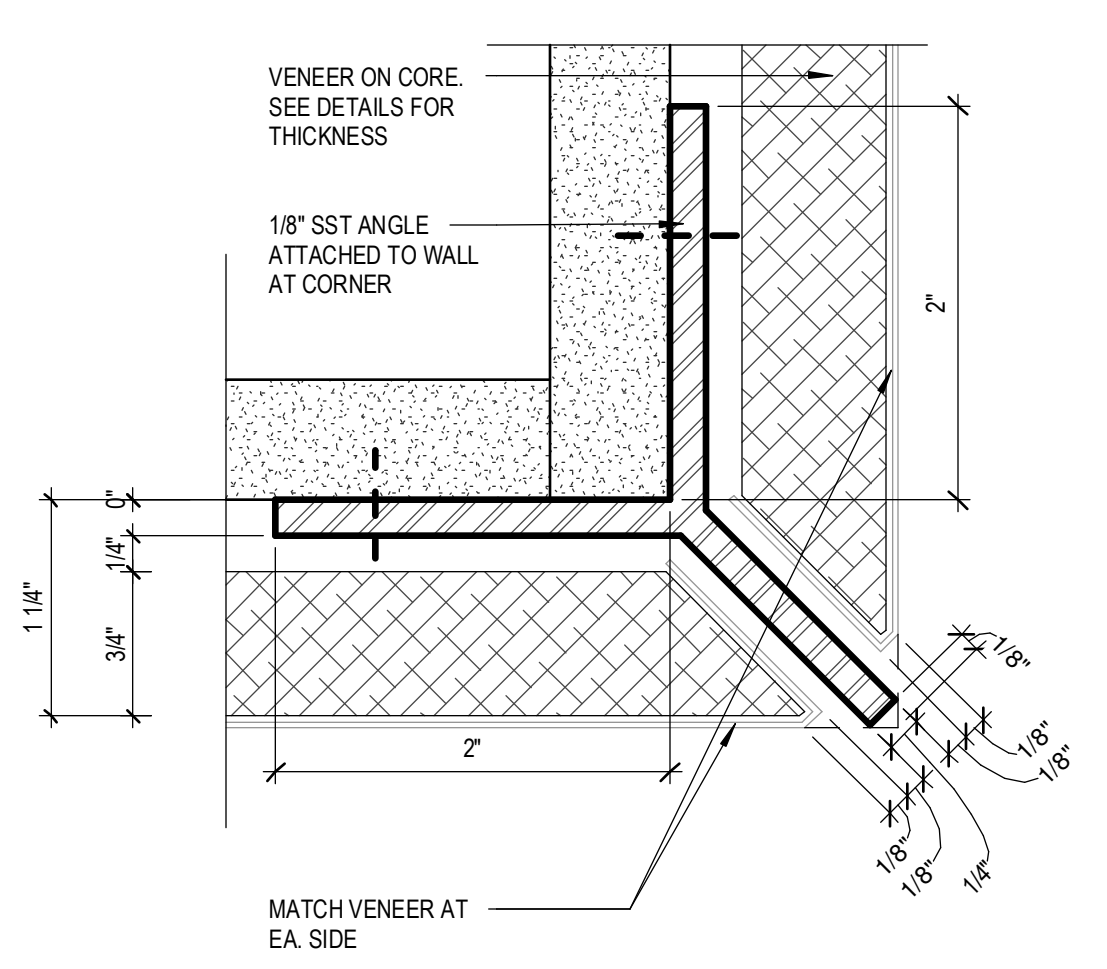
12 TYP. WOOD PANEL JOINT
 12" = 1'-0"



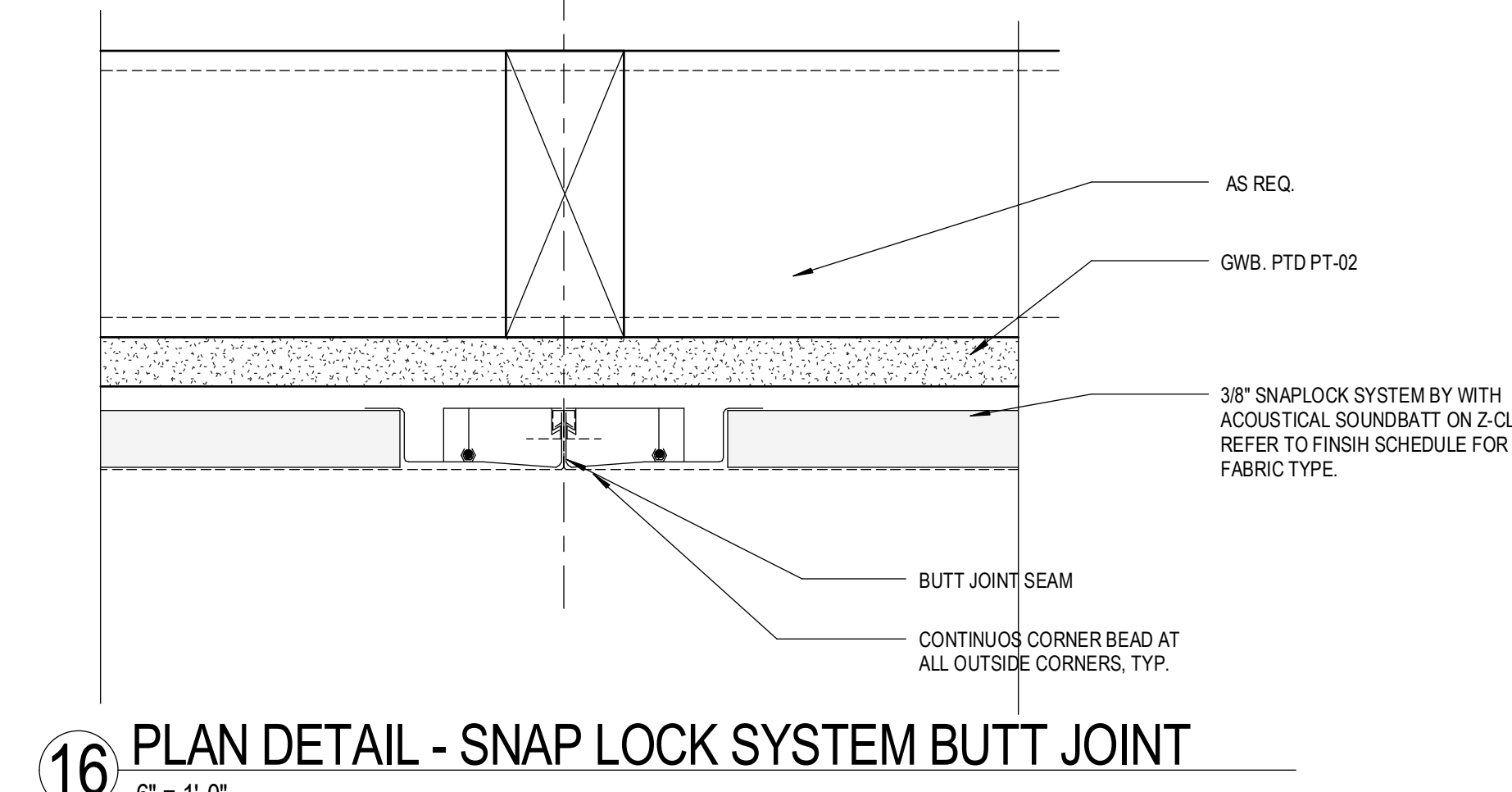
13 WOOD VENEER PLAN DETAIL
 12" = 1'-0"



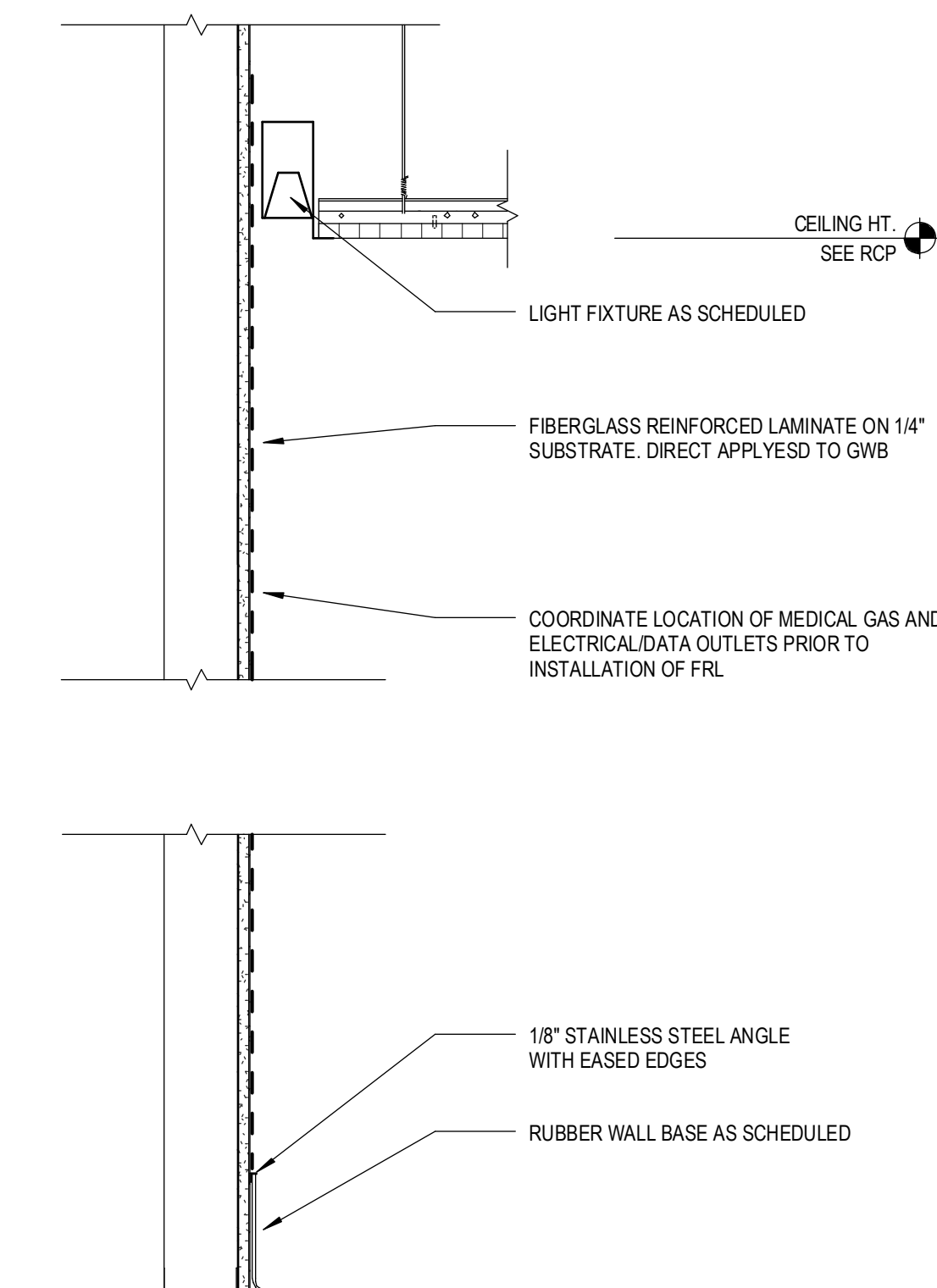
14 FLOATING DRAWER - SOLID SURFACE
 1 1/2" = 1'-0"



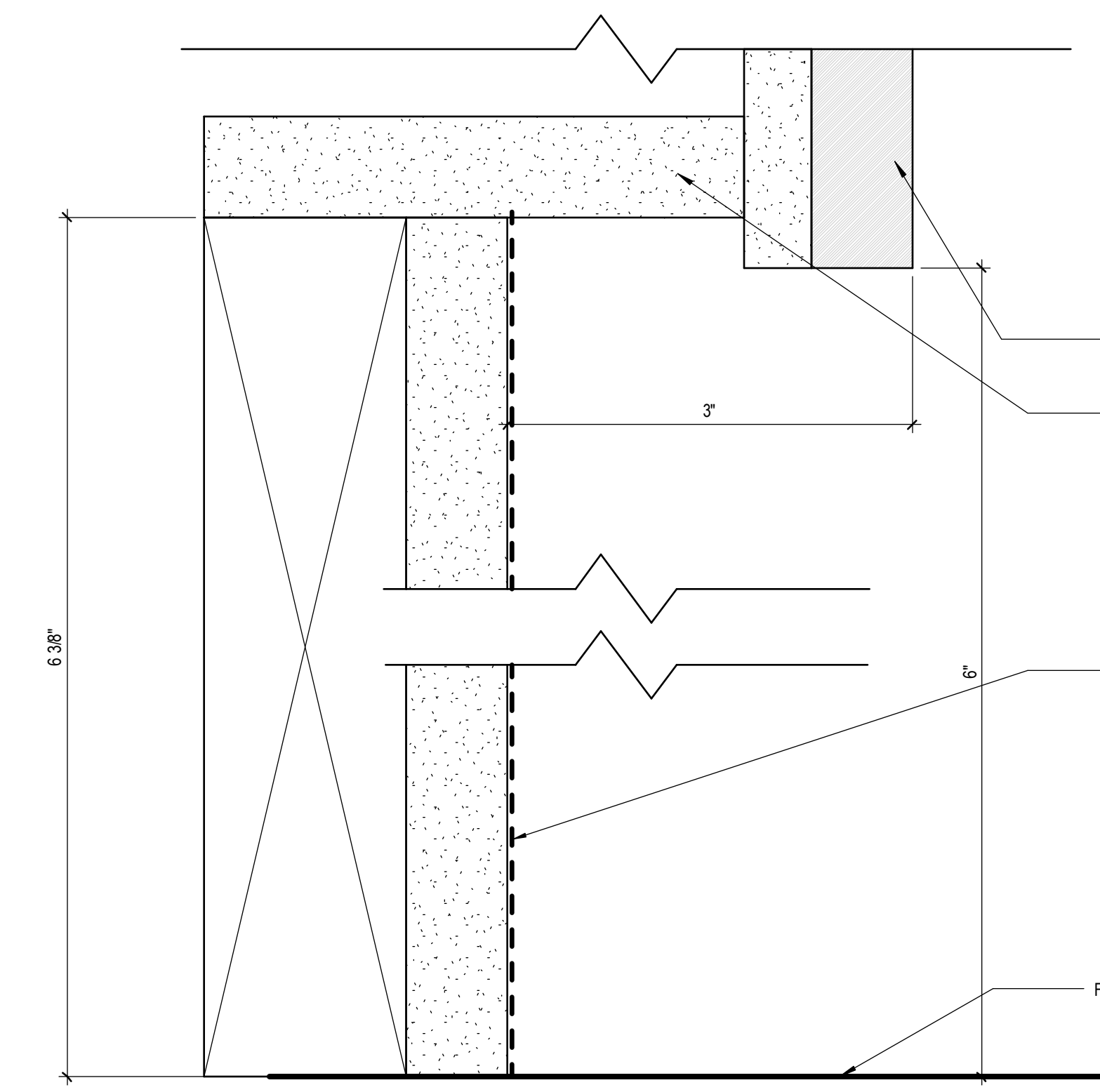
15 WOOD paneled wall corner detail
 12" = 1'-0"



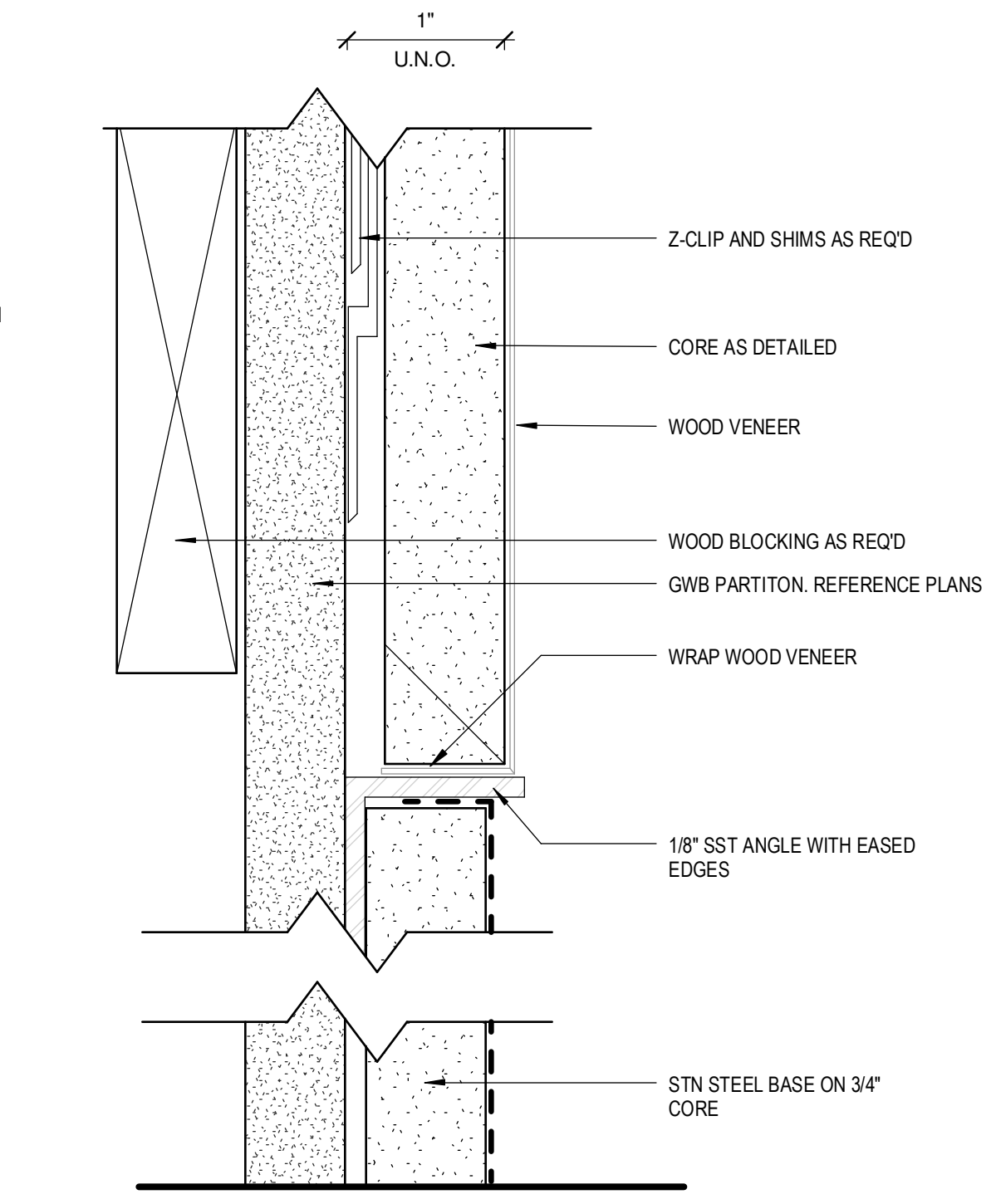
16 PLAN DETAIL - SNAP LOCK SYSTEM BUTT JOINT
 6" = 1'-0"



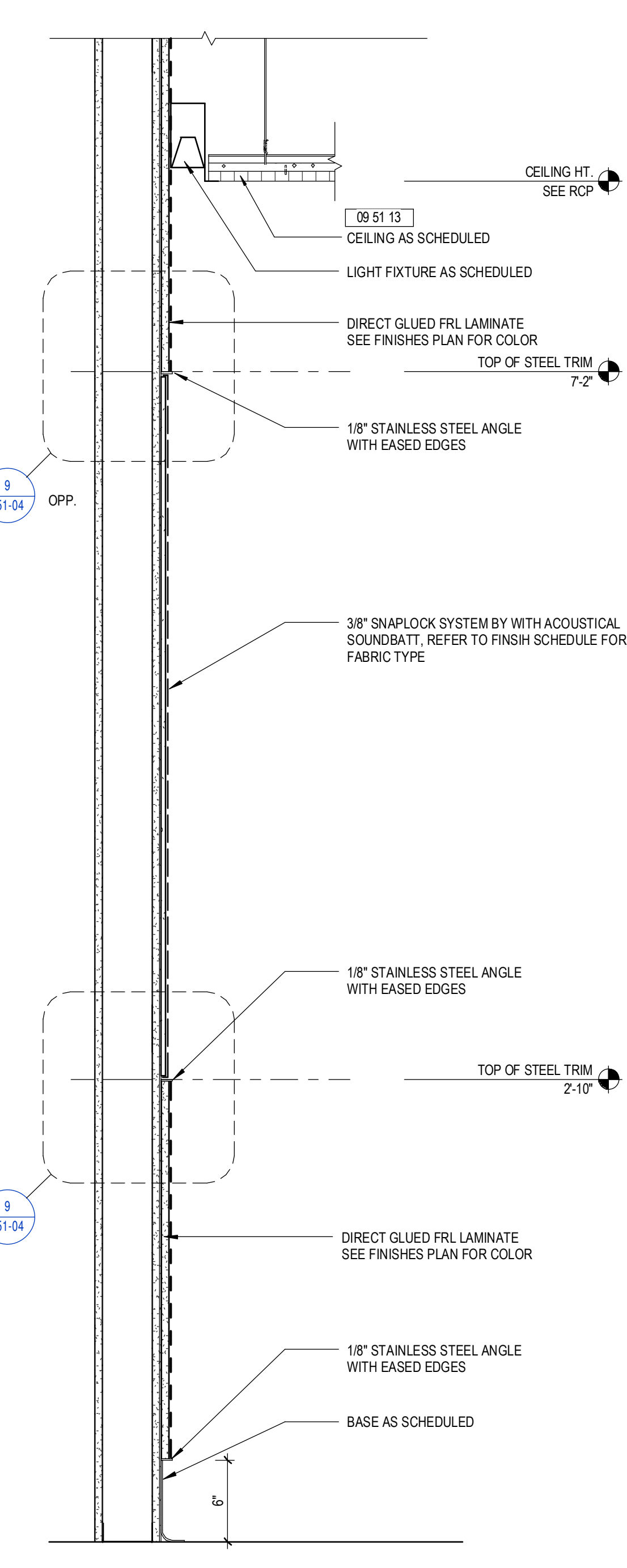
8 SECTION AT PATIENT HEADWALL
 1 1/2" = 1'-0"



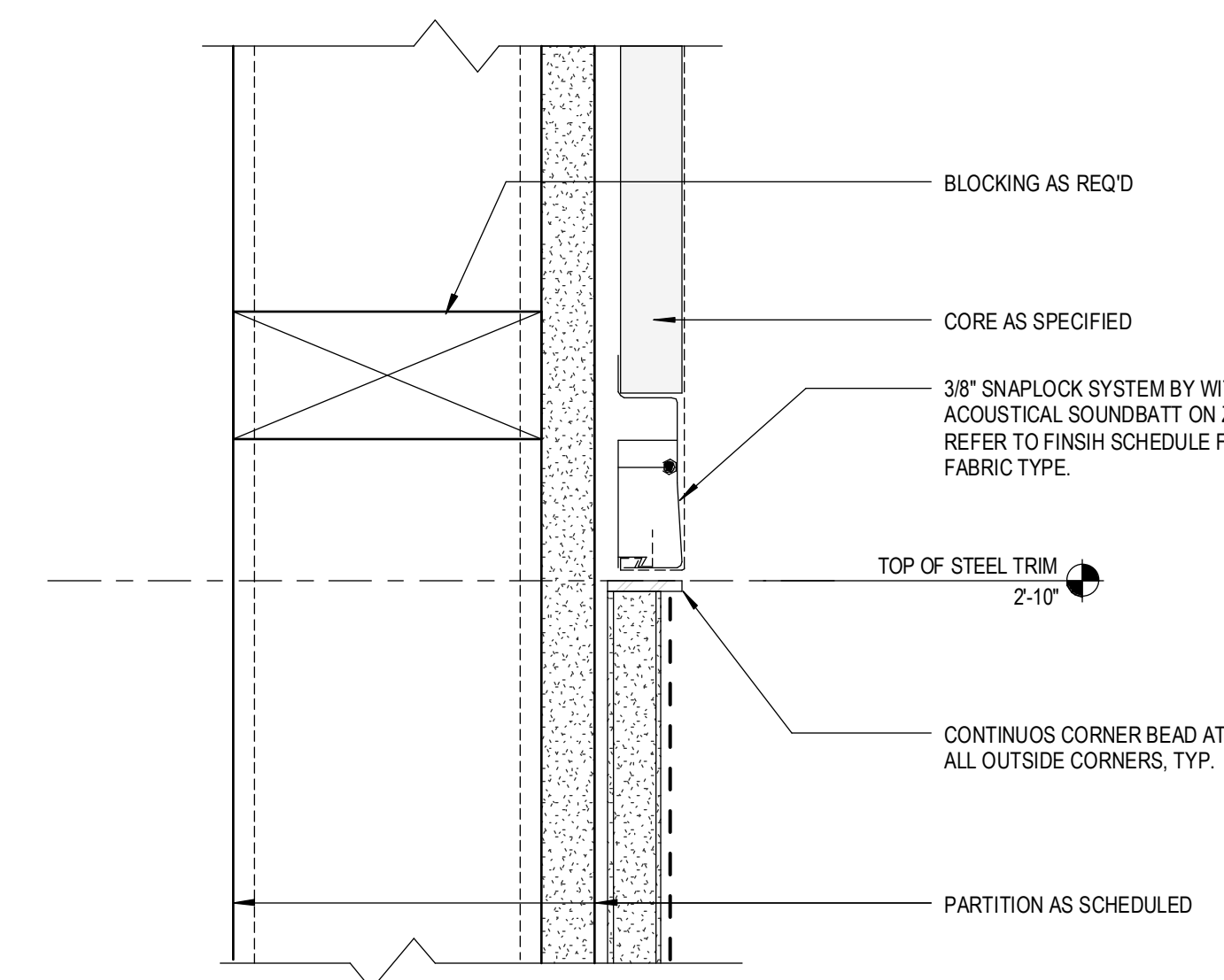
7 TYP. FLUSH STN STL BASE
 12" = 1'-0"



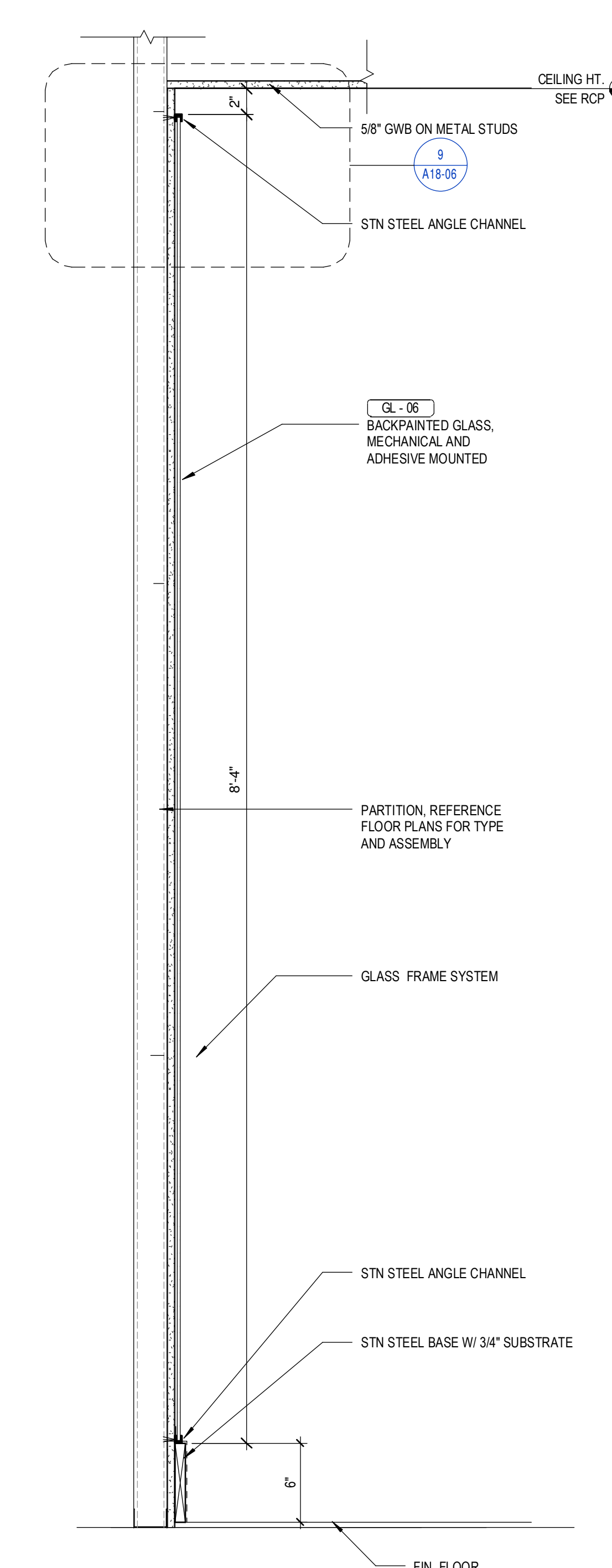
6 TYP. STN STL BASE
 12" = 1'-0"



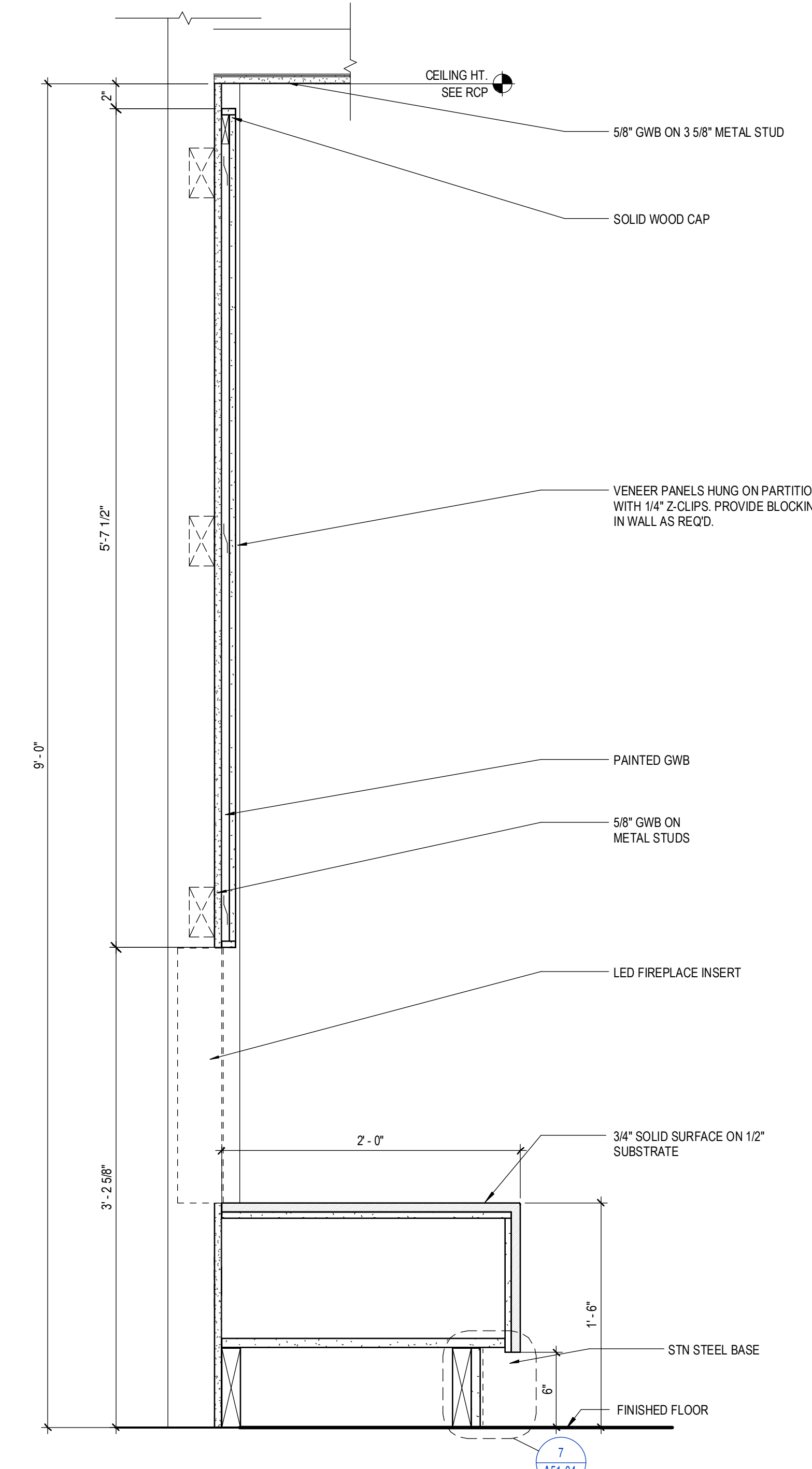
10 SECTION AT CARE STATION W/ ACOUSTIC PANEL
 1 1/2" = 1'-0"



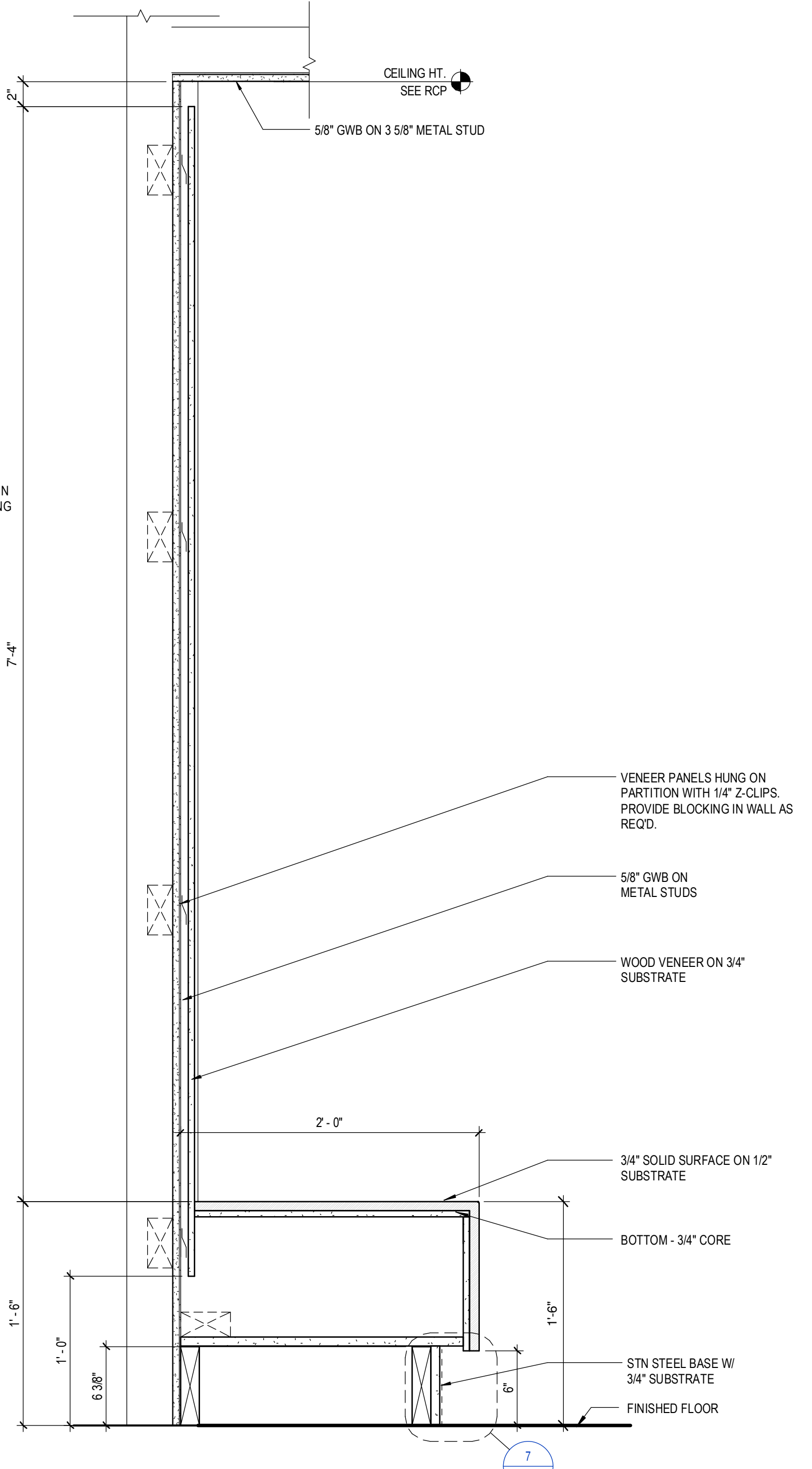
9 DETAIL - SNAP LOCK SYSTEM TYP.
 6" = 1'-0"



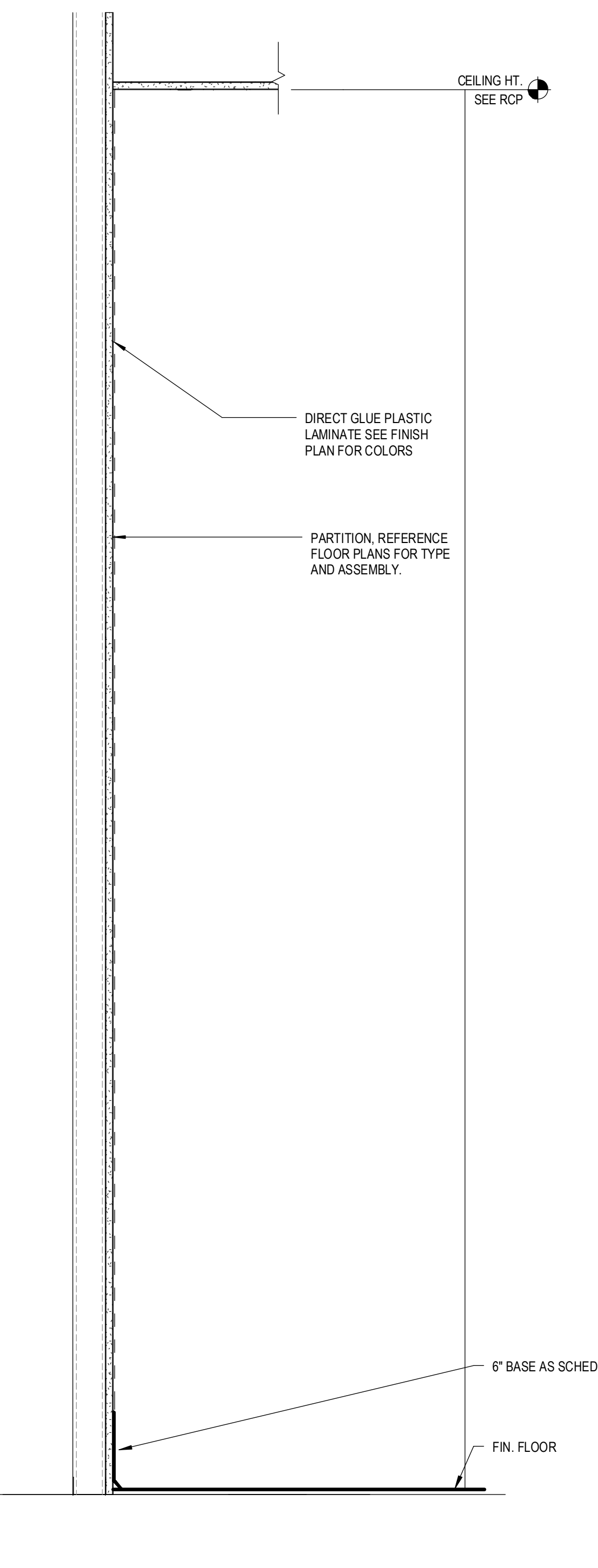
3 SECTION AT BACKPAINTED GLASS
 1 1/2" = 1'-0"



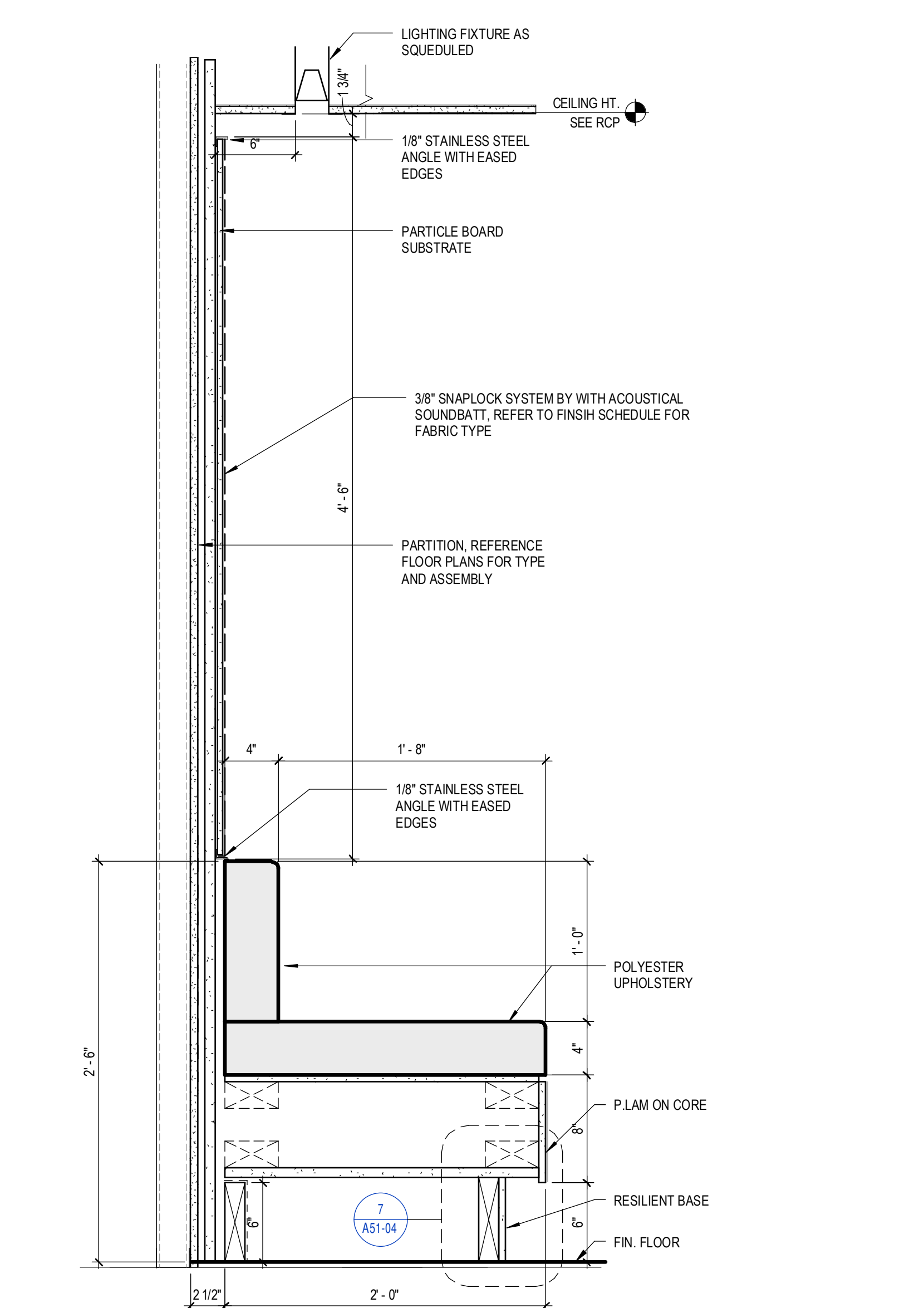
2 SECTION AT WOOD WALL WITH FIREPLACE
 1 1/2" = 1'-0"



1 SECTION AT WOOD WALL
 1 1/2" = 1'-0"



5 SECTION AT EQUIPMENT ALCOVE
 1 1/2" = 1'-0"



4 SECTION AT FABRIC WALL SYSTEM WITH HIGH TOP BENCH
 1 1/2" = 1'-0"