

CONSULTANTS

CVL / LANDSCAPE ARCHITECT
Sebago Technics
 75 John Roberts Road, Suite
 1A, South Portland ME 04106

STRUCTURAL ENG. BUILDING ENVELOPE CONSULTANT
Shingon Gumpertz & Hager Inc.
 41 Seven Street, Building 1, Suite 500,
 Waltham MA 02453

MERFP ENGINEER CODE
AKF Group LLC
 99 Bedford Street, 2nd Floor, Boston MA 02111

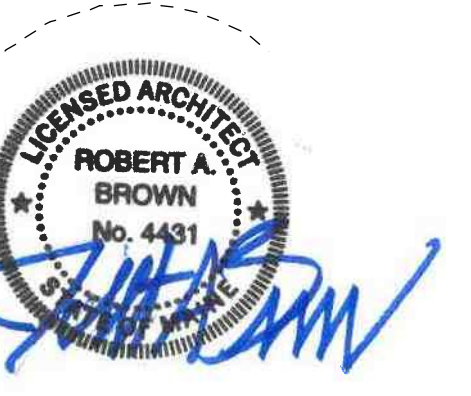
CONSTRUCTION MANAGER
Turner Construction
 2 Seaport Lane, Suite 200, Boston MA 02210

ELEVATOR CONSULTANT
VDA (Van Olesen & Associates)
 101 Summer Street, 4th Floor, Boston MA
 02110

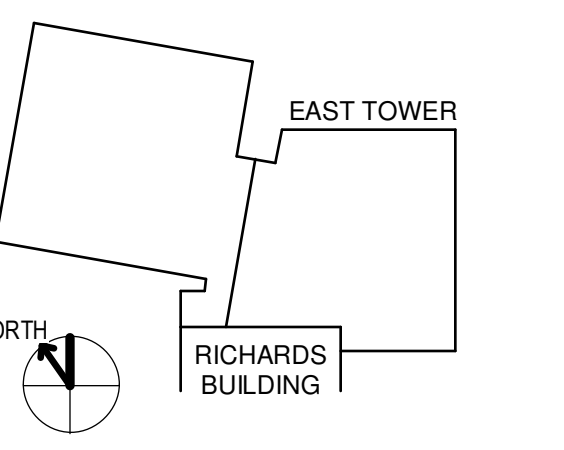
COAT ESTIMATOR
D. G. Jones International
 3 Baldwin Green Common, Suite 202, Woburn MA 01801

PROJECT TITLE

**East Tower 6 & 7
 Addition**
 22 Bramhall Street
 Portland ME 04102



KEY PLANS



OVERALL KEY PLAN

- 1 - GILMAN GARAGE
- 2 - CONGRESS STREET
- 3 - VISITOR GARAGE
- 4 - EAST TOWER
- 5 - CENTRAL UTILITY PLANT
- 6 - BEAN BUILDING
- 7 - RICHARDS BUILDING
- 8 - MAINE GENERAL BUILDING

CONSTRUCTION DOCUMENTS
 JANUARY 26, 2018

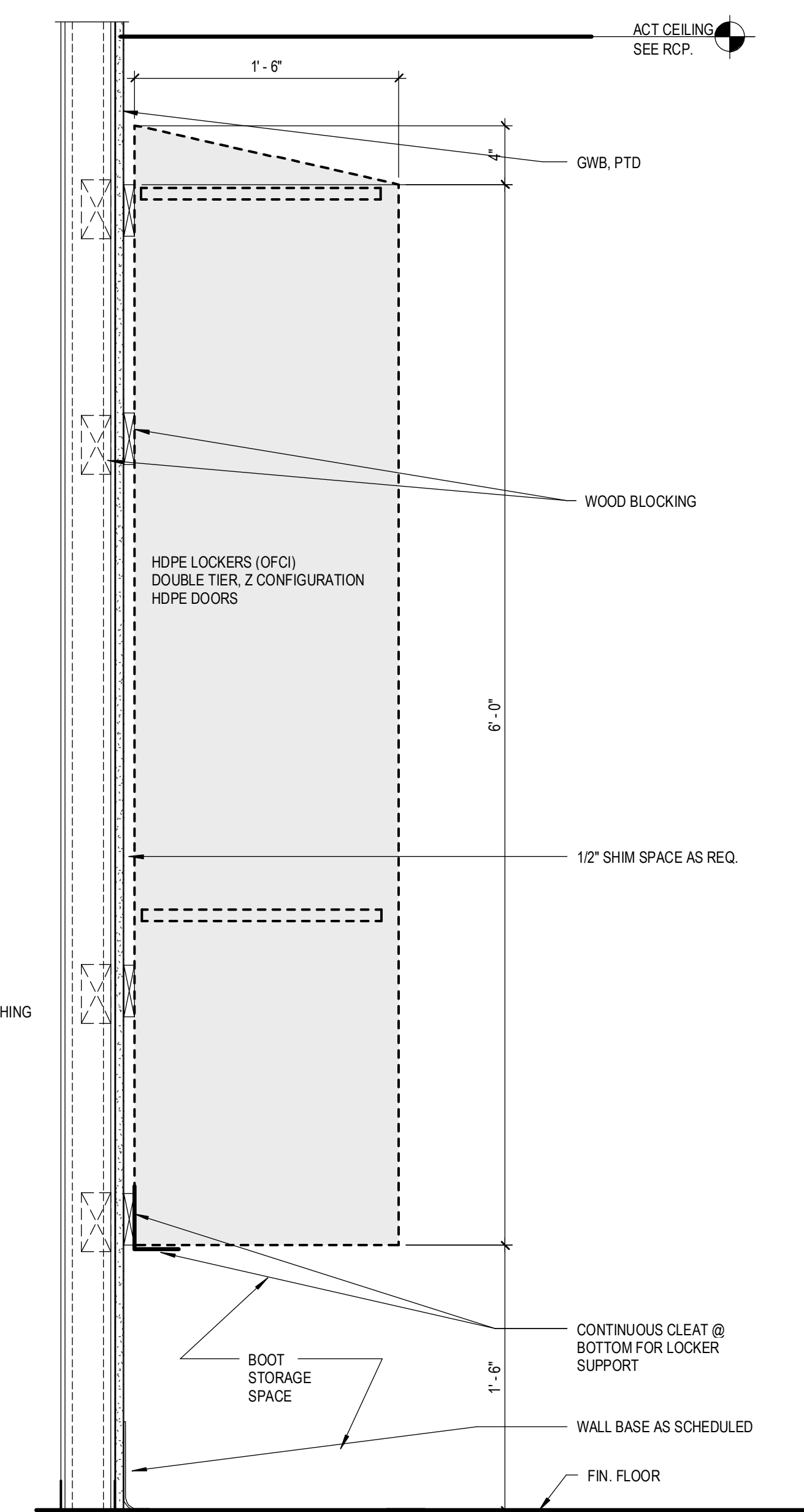
NO	ISSUE	DATE
1	ADDENDUM NO. 1	3/22/18

Job Number: 152181.000
 Drawn: TEAM
 Checked: JK
 Approved: JK

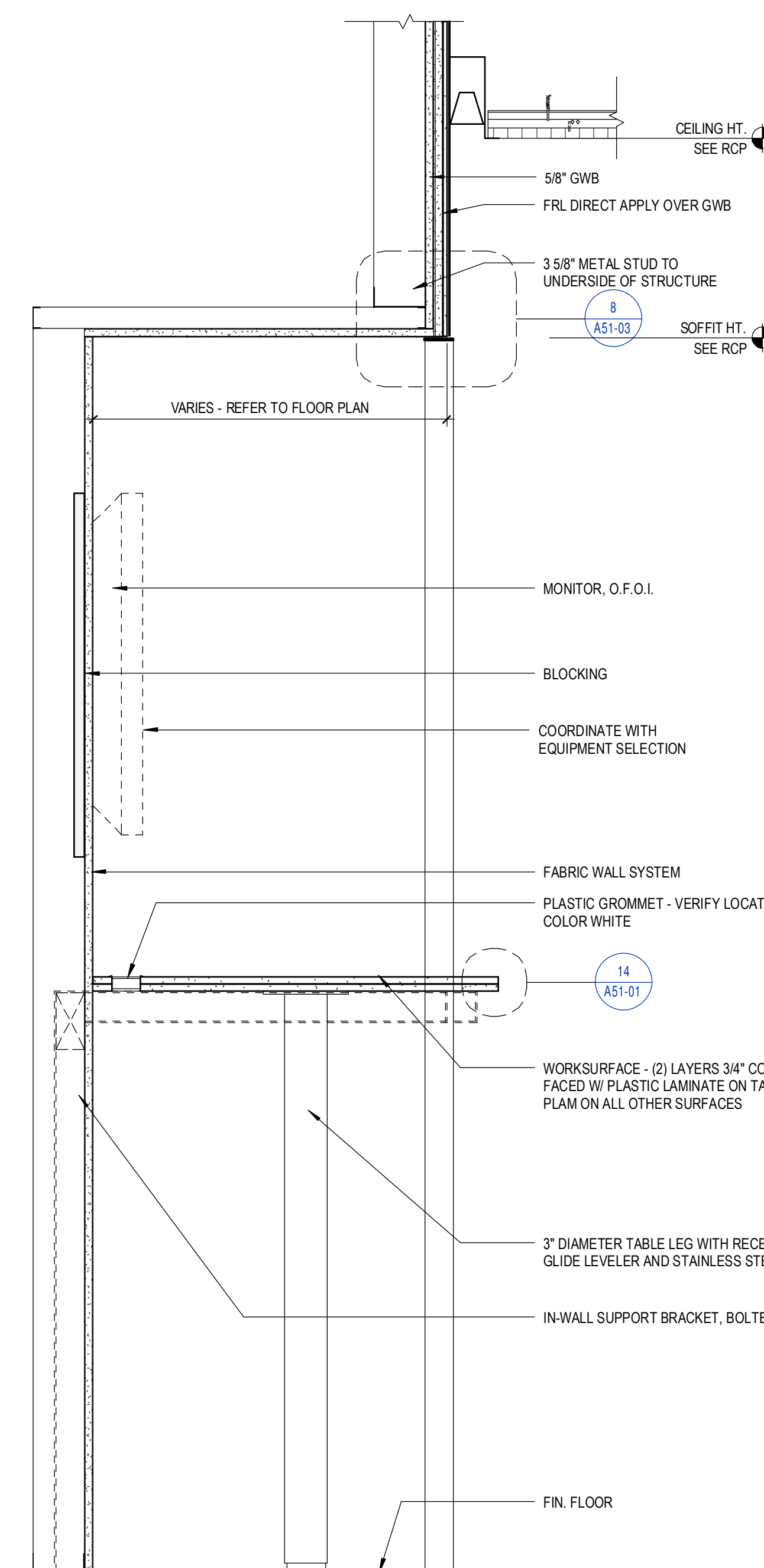
TITLE
**MILLWORK
 DETAILS**

SHEET NUMBER

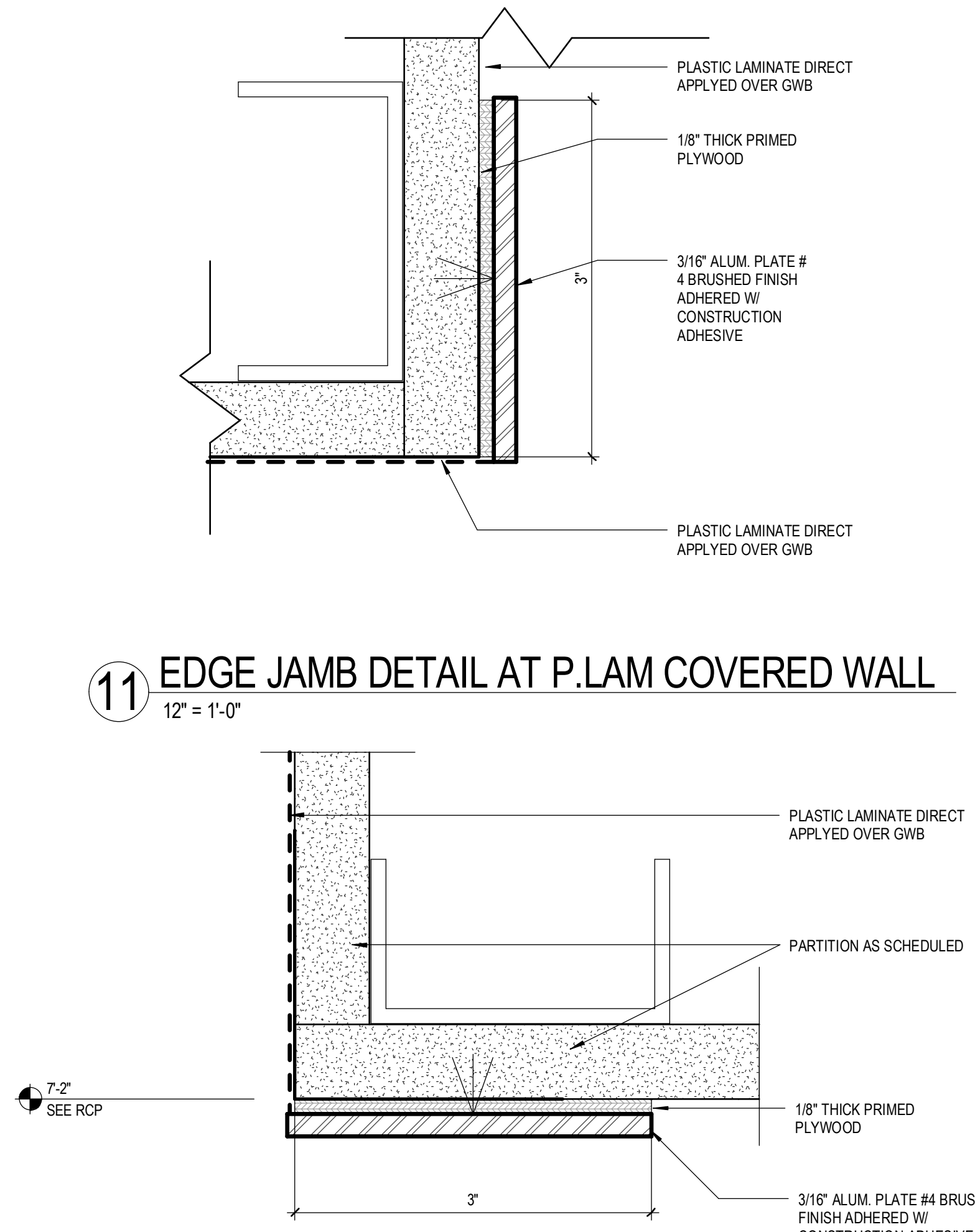
A51-03



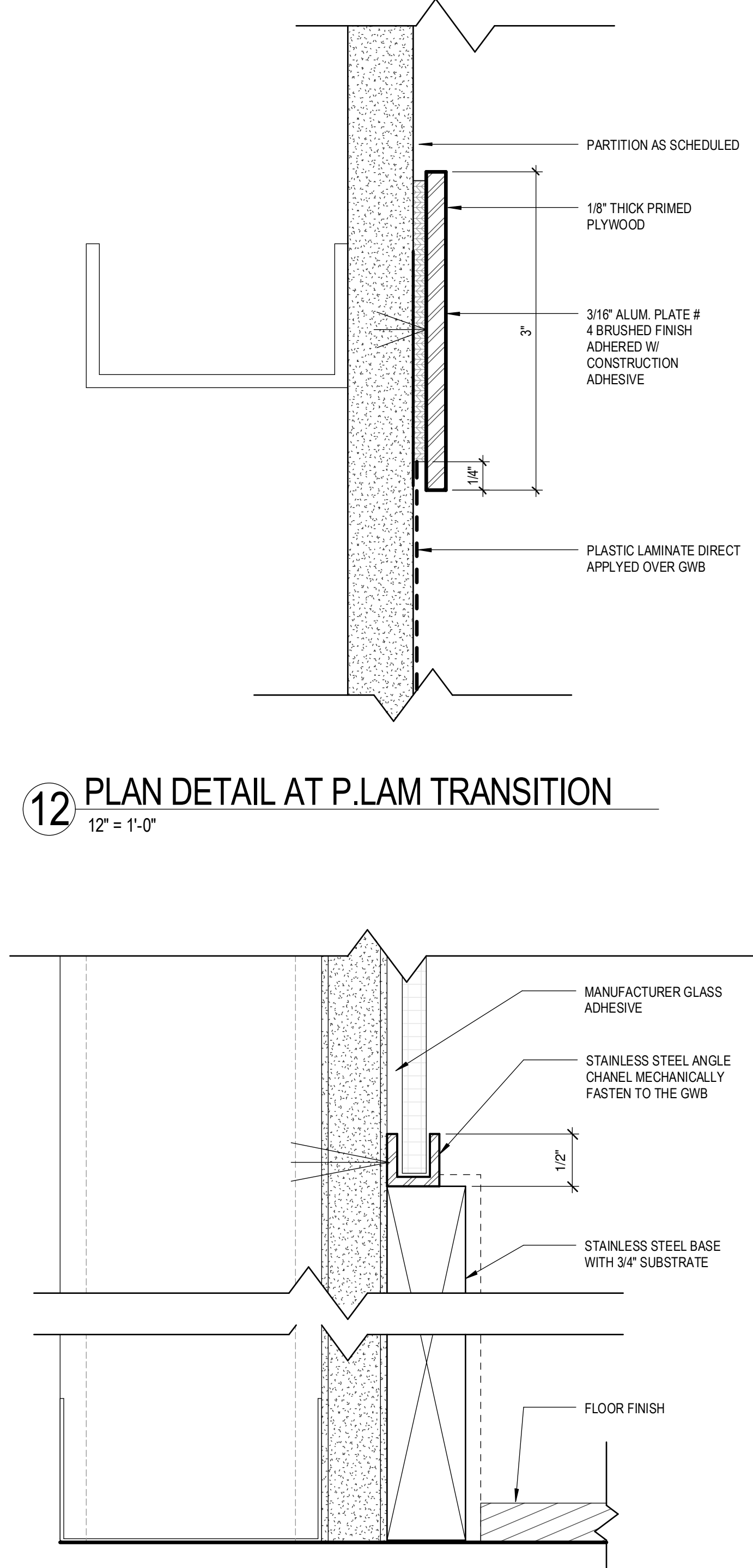
6 SECTION AT LOCKERS
 1 1/2" = 1'-0"



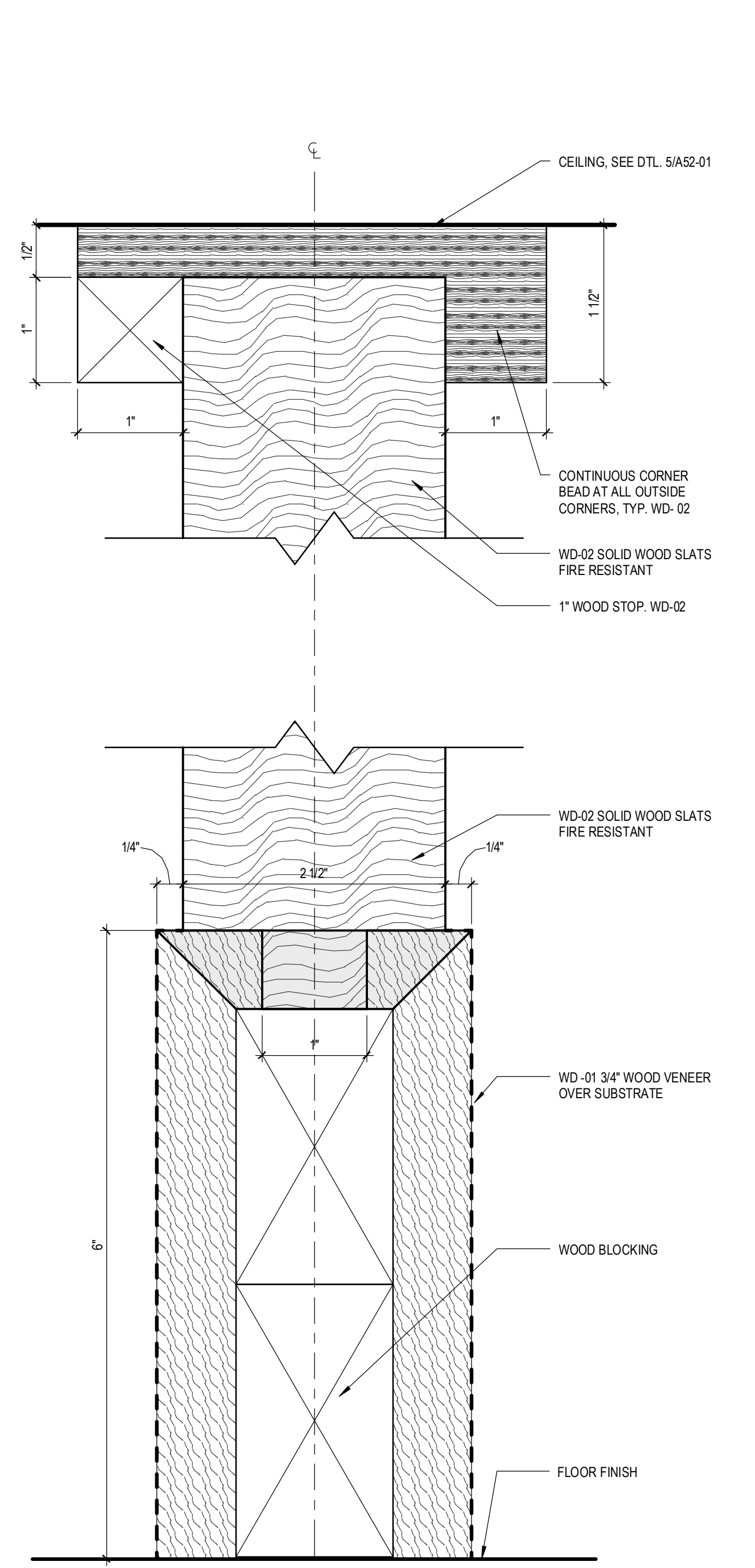
7 TEAMING STATION TABLE - LAMINATE
 1 1/2" = 1'-0"



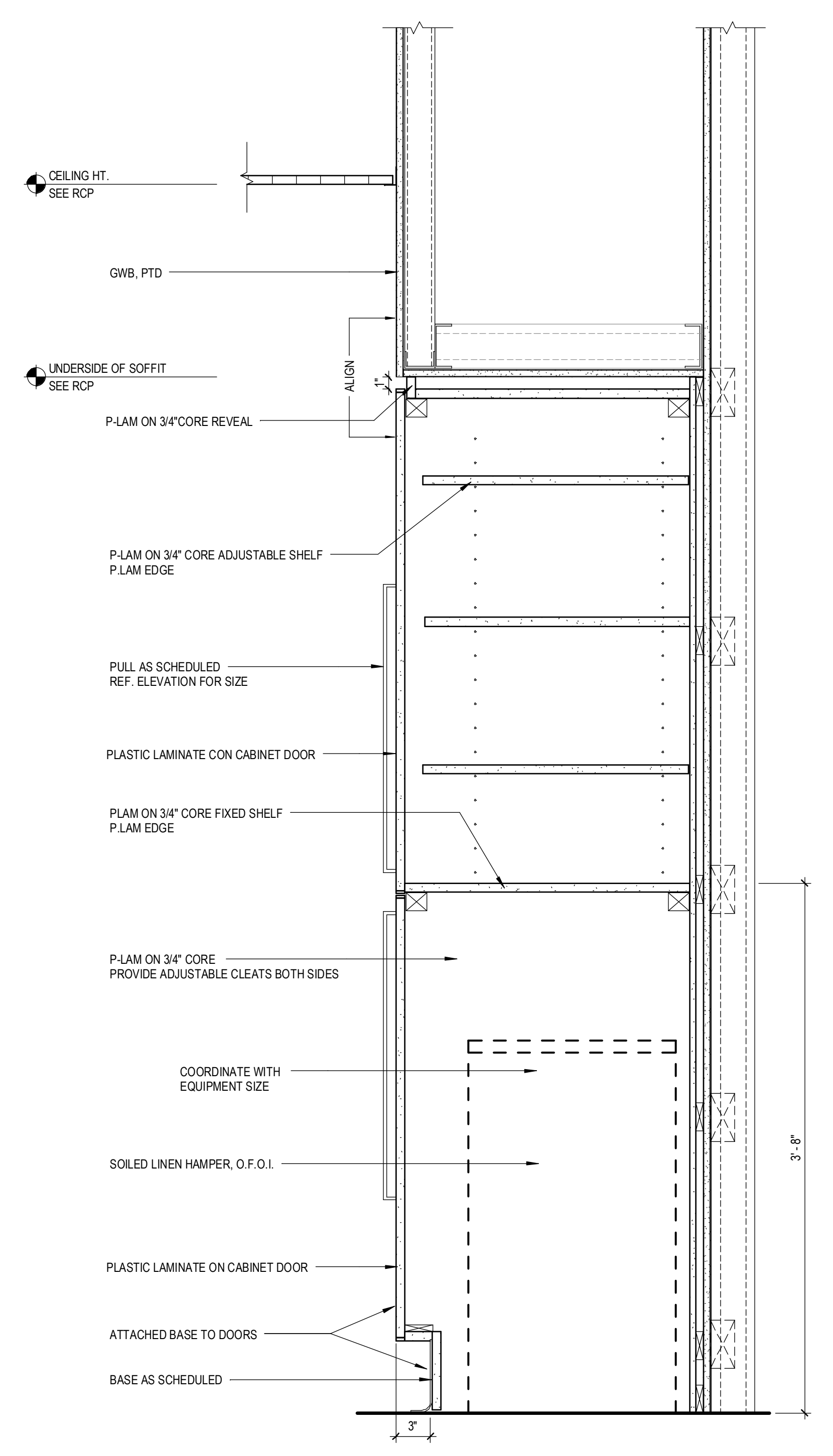
8 EDGE HEAD DETAIL AT P.LAM COVERED WALL
 12" = 1'-0"



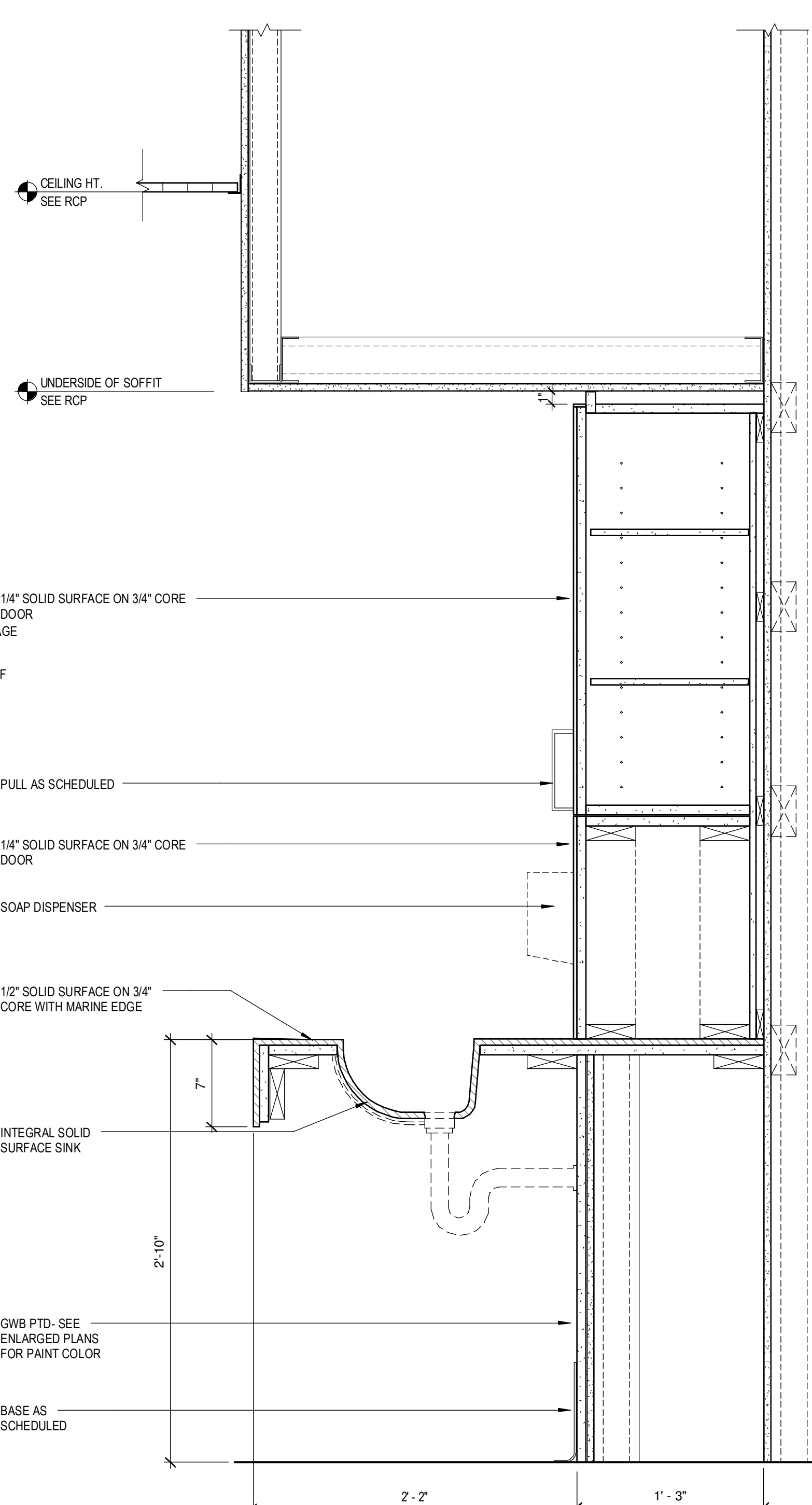
11 EDGE JAMB DETAIL AT P.LAM COVERED WALL
 12" = 1'-0"



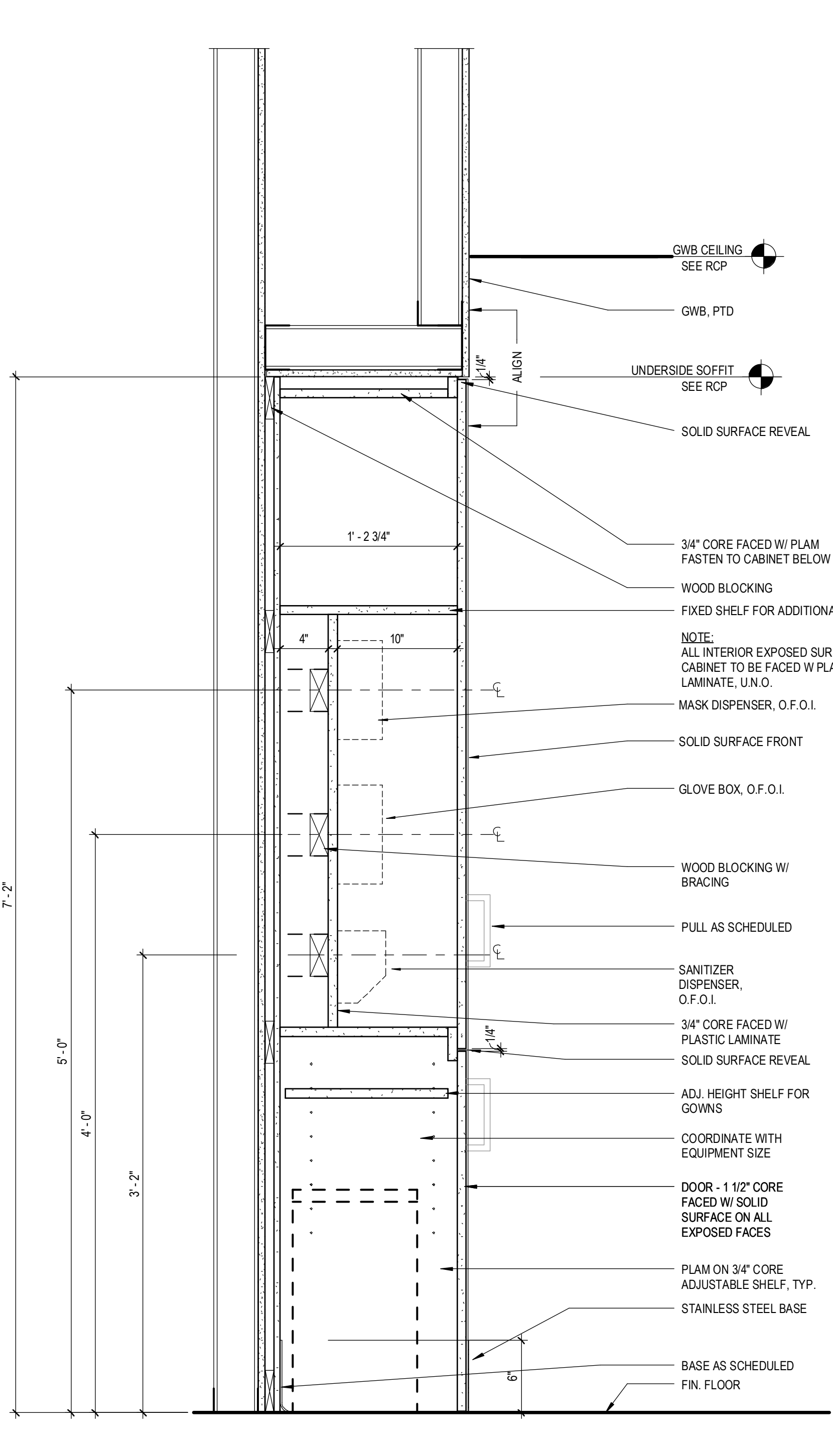
12 PLAN DETAIL AT P.LAM TRANSITION
 12" = 1'-0"



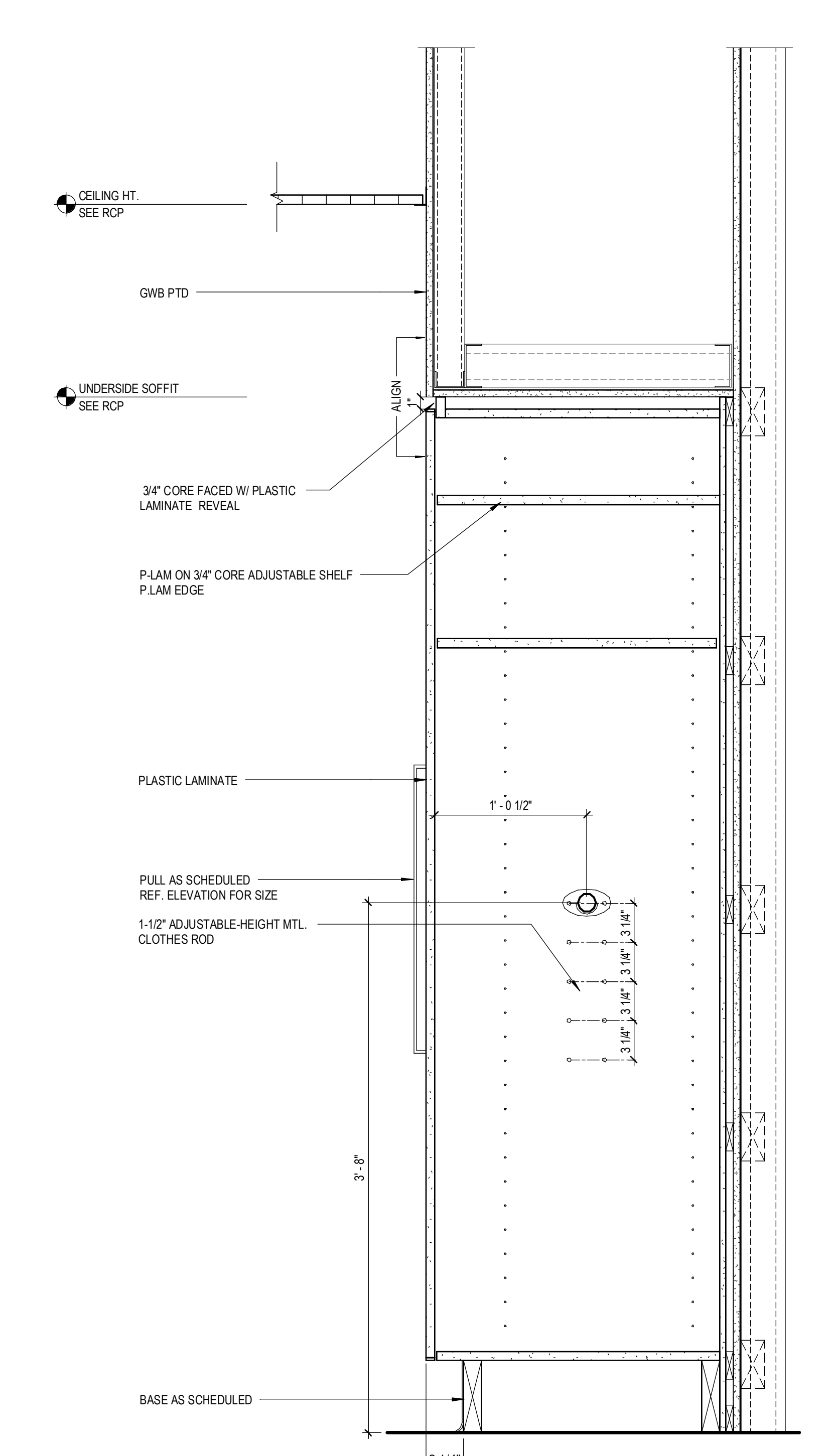
1 PATIENT ROOM WARDROBE
 1 1/2" = 1'-0"



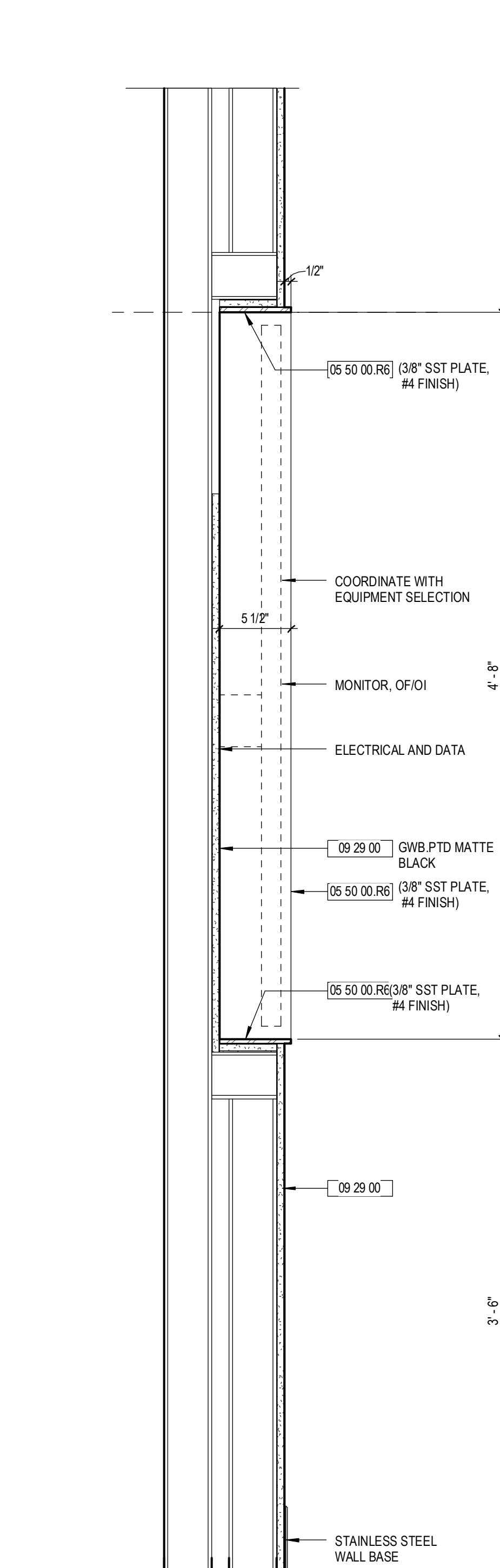
2 PATIENT ROOM SINK/CABINET
 1 1/2" = 1'-0"



3 SECTION THROUGH P.P.E. CABINET
 1 1/2" = 1'-0"



4 PATIENT ROOM STORAGE CABINET
 1 1/2" = 1'-0"



5 MONITOR RECESS AT LOBBY
 1 1/2" = 1'-0"