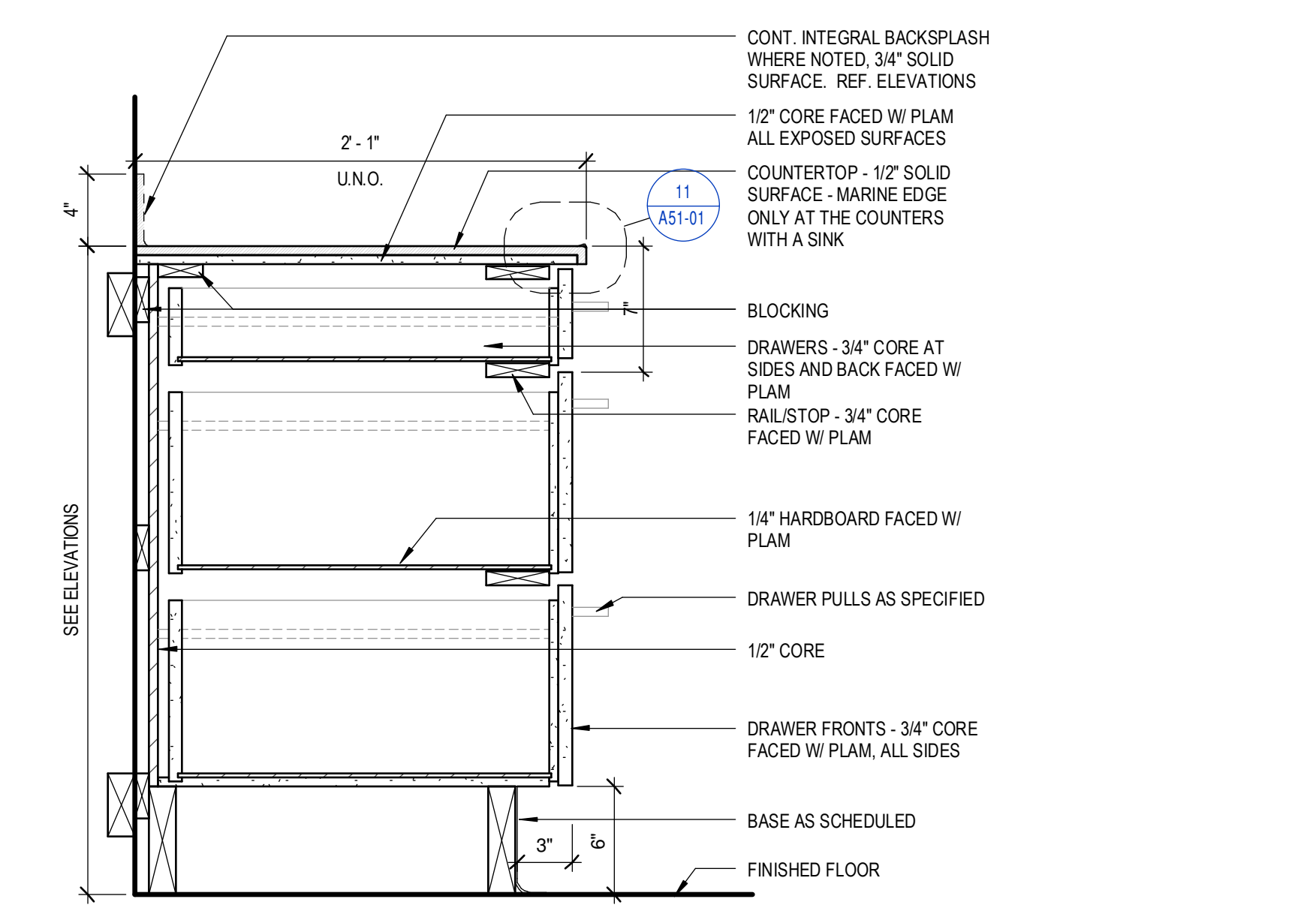
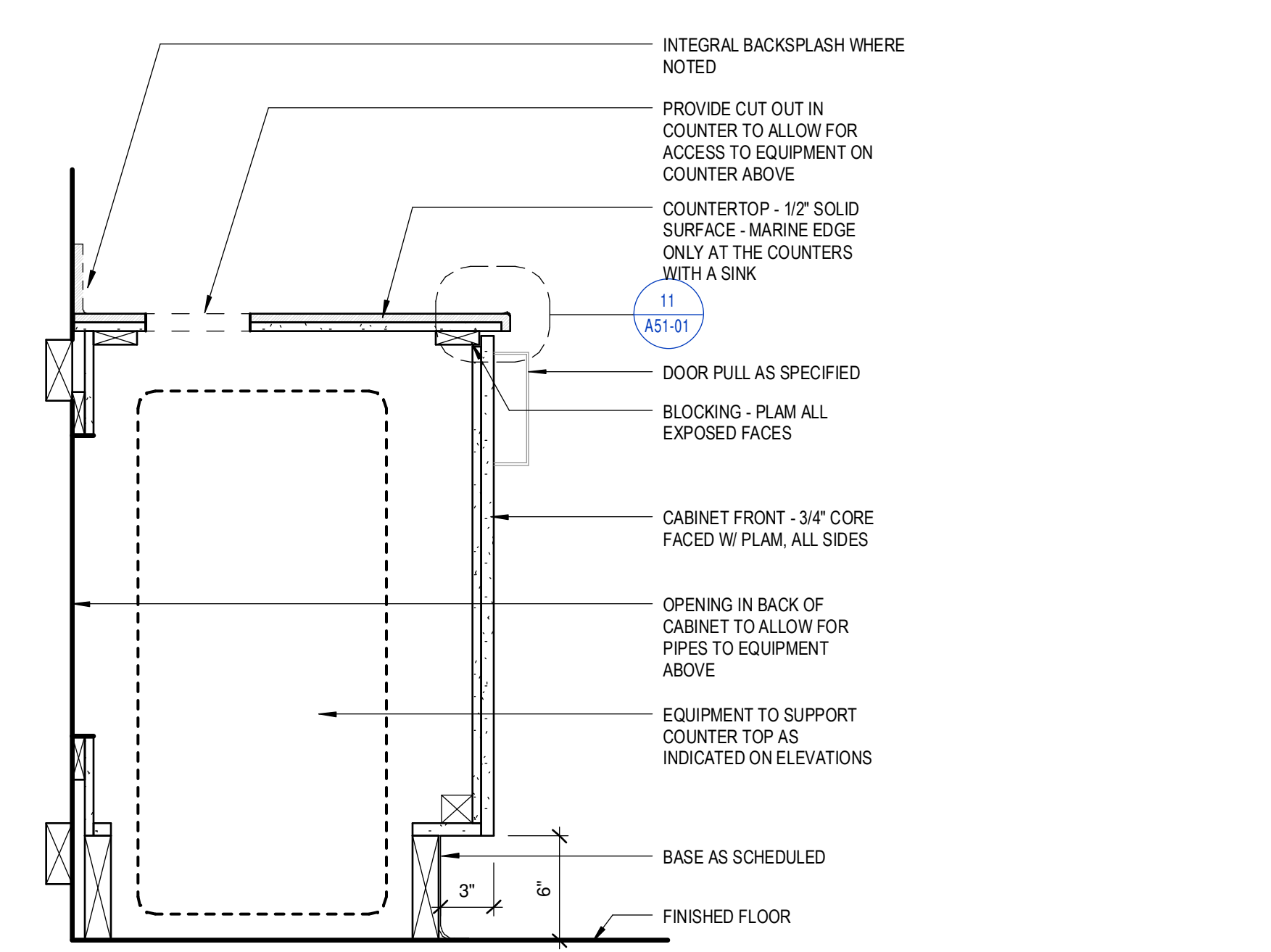


- 1 - GILMAN GARAGE
- 2 - CONGRESS STREET
- 3 - VISITOR GARAGE
- 4 - EAST TOWER
- 5 - CENTRAL UTILITY PLANT
- 6 - BEAN BUILDING
- 7 - RICHARDS BUILDING
- 8 - MAINE GENERAL BUILDING

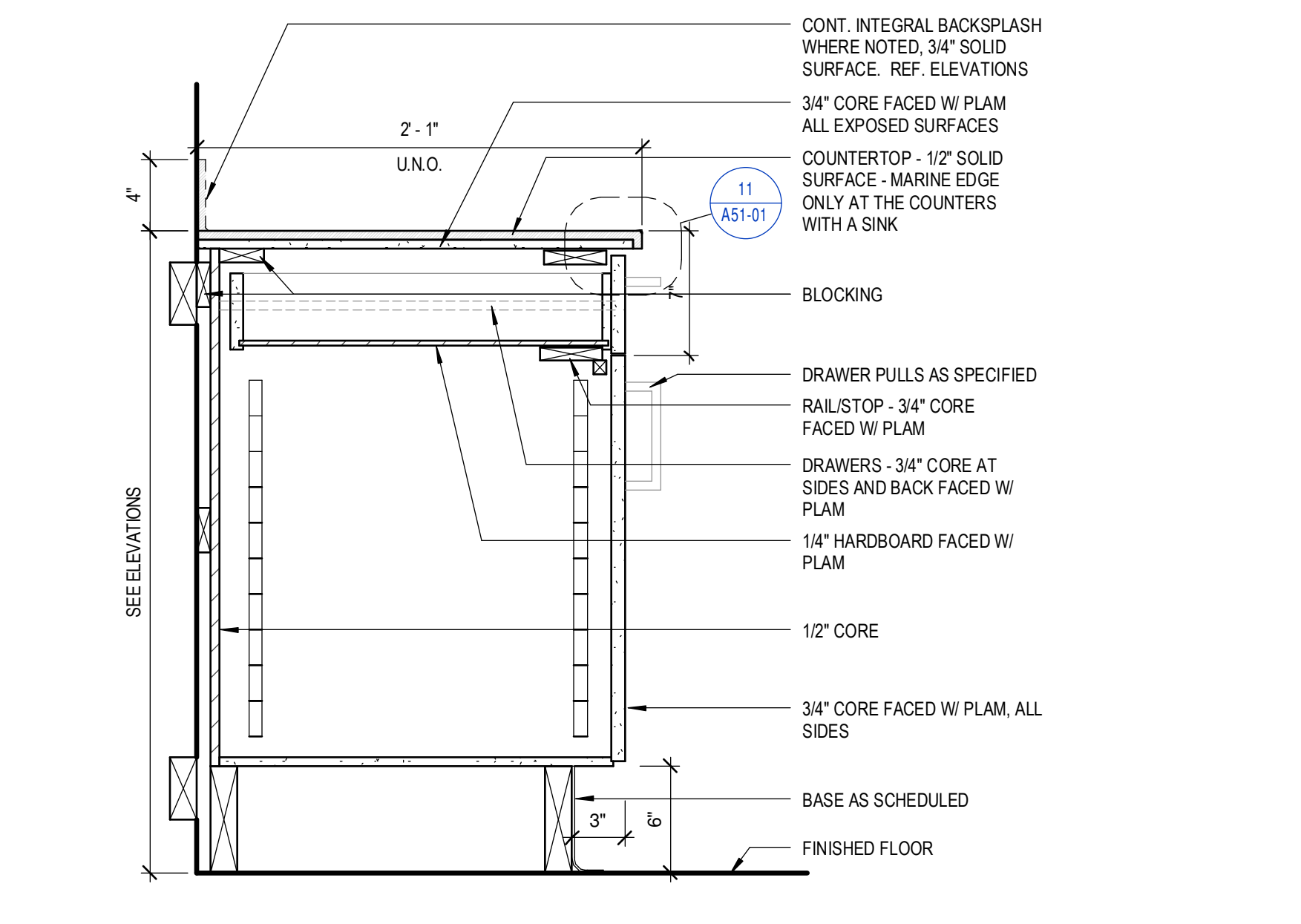
NO.	ISSUE	DATE
Job Number	152181.000	
Drawn	TEAM	
Checked		
Approved	JK	



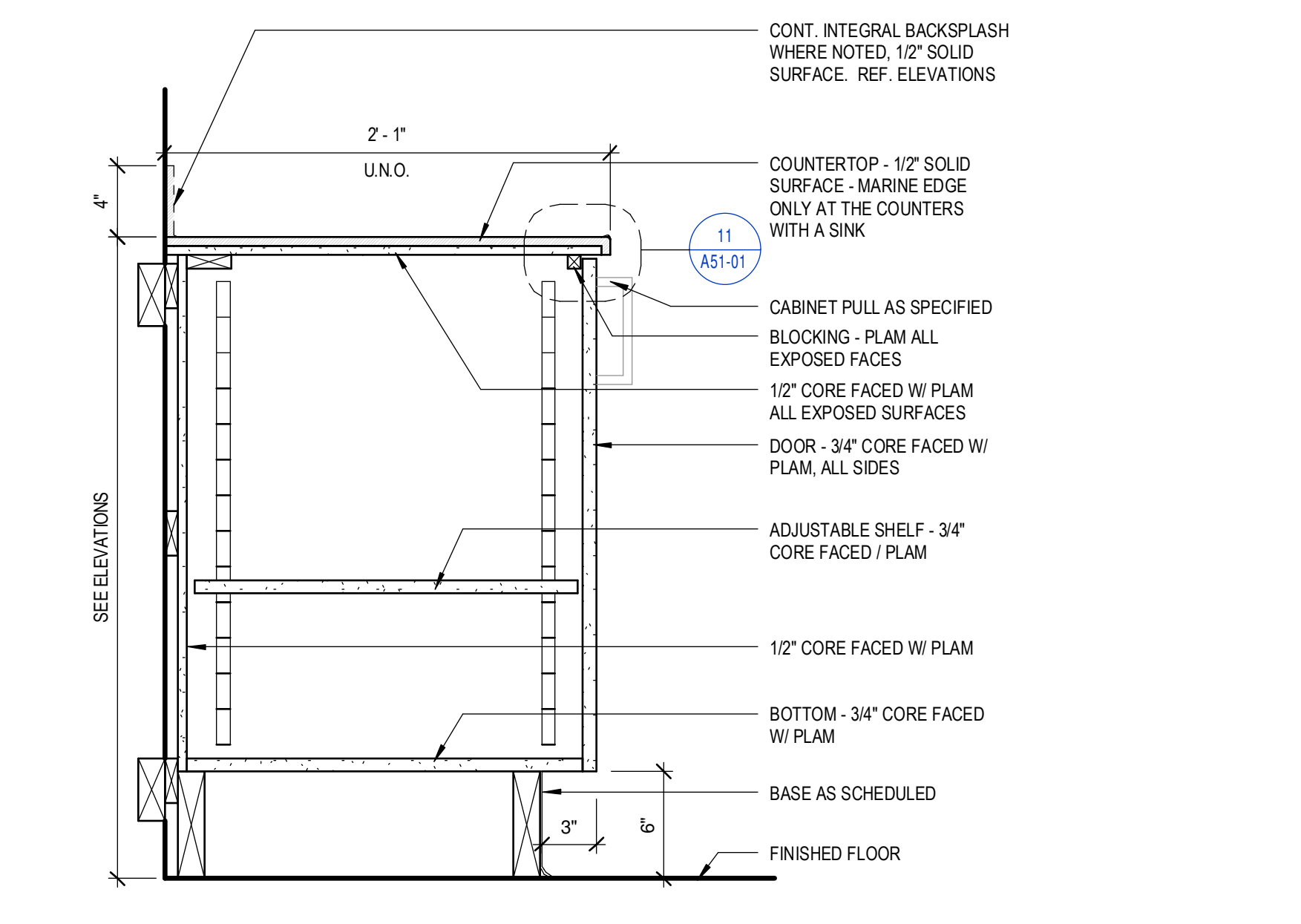
4 BASE CABINET W/ FILE DRAWER - SOLID SURFACE
 1 1/2" = 1'-0"



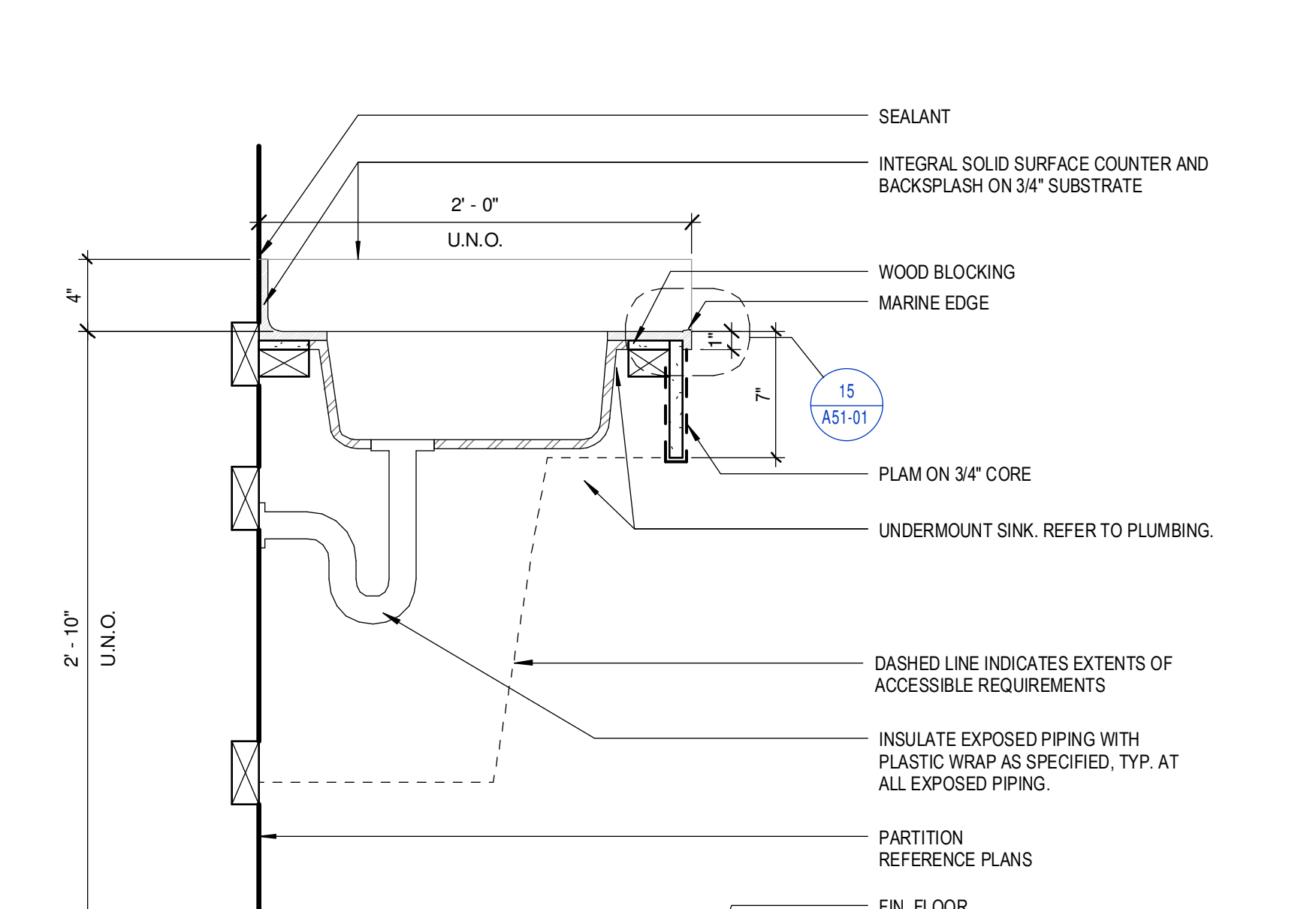
3 BASE CABINET W/ FULL LENGTH DOOR @ ICE MACHINE
 1 1/2" = 1'-0"



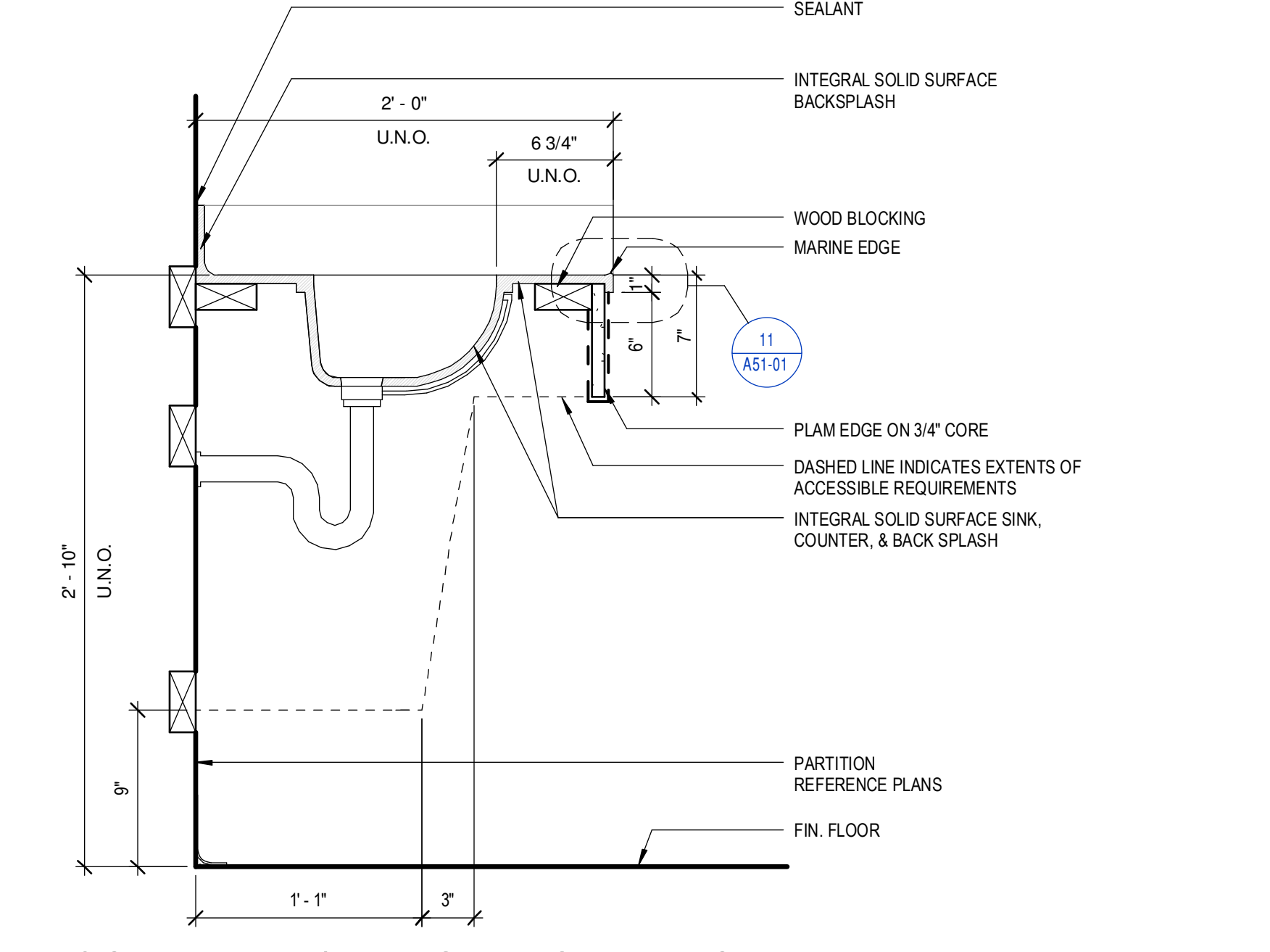
2 BASE CABINET W/ SINGLE DRAWER - SOLID SURFACE
 1 1/2" = 1'-0"



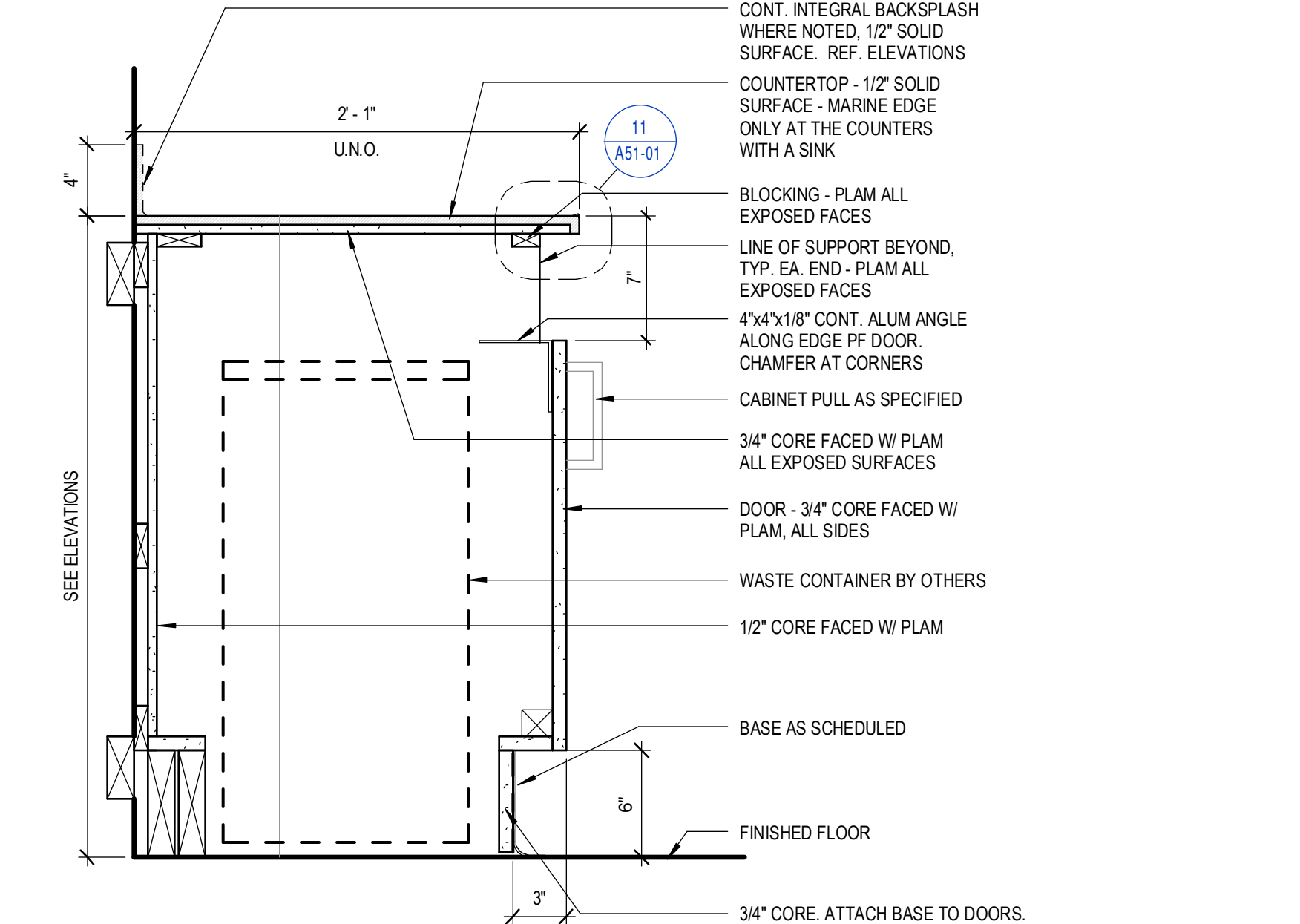
1 BASE CABINET - SOLID SURFACE
 1 1/2" = 1'-0"



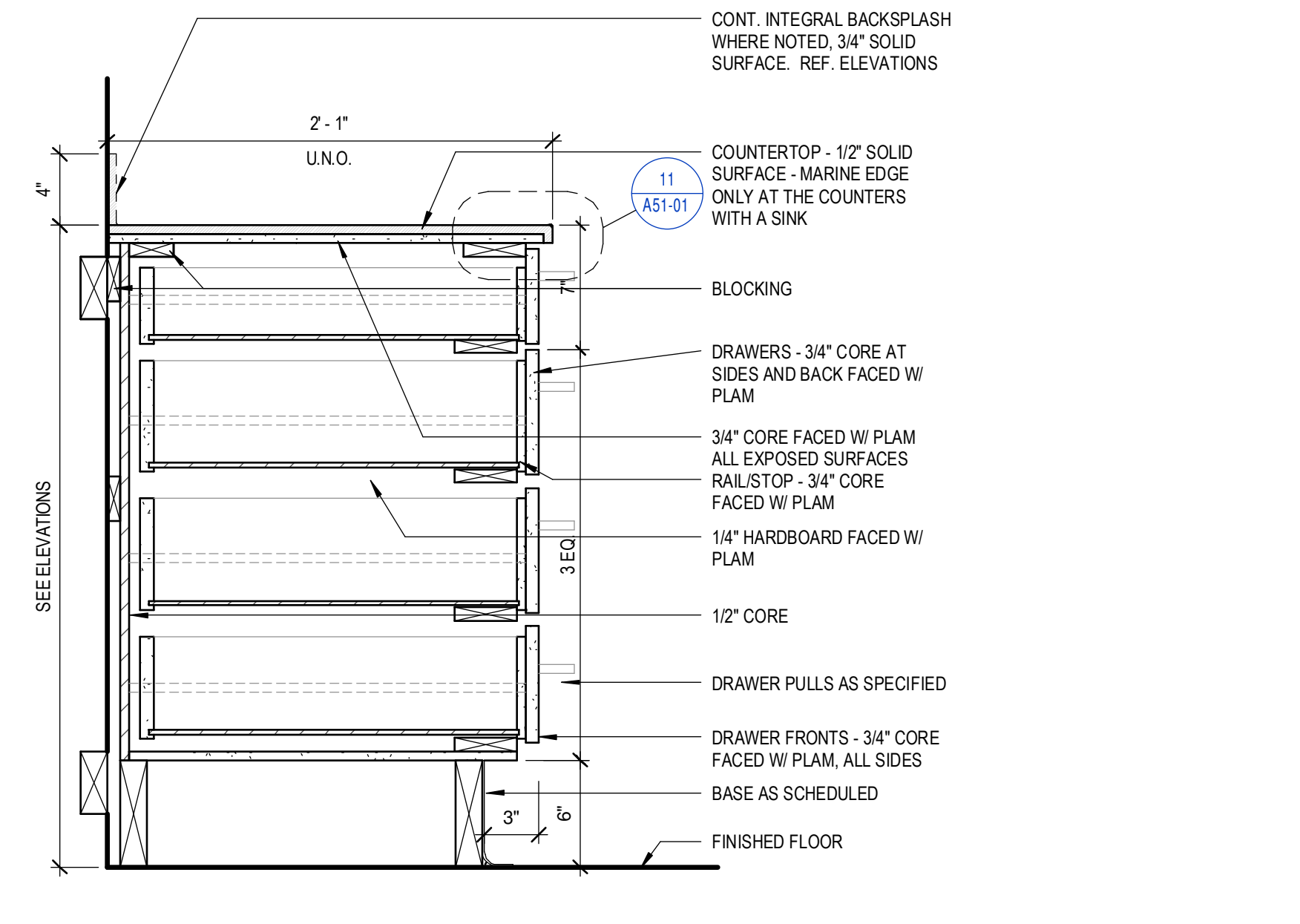
8 COUNTER W/ UNDERMOUNT SINK
 1 1/2" = 1'-0"



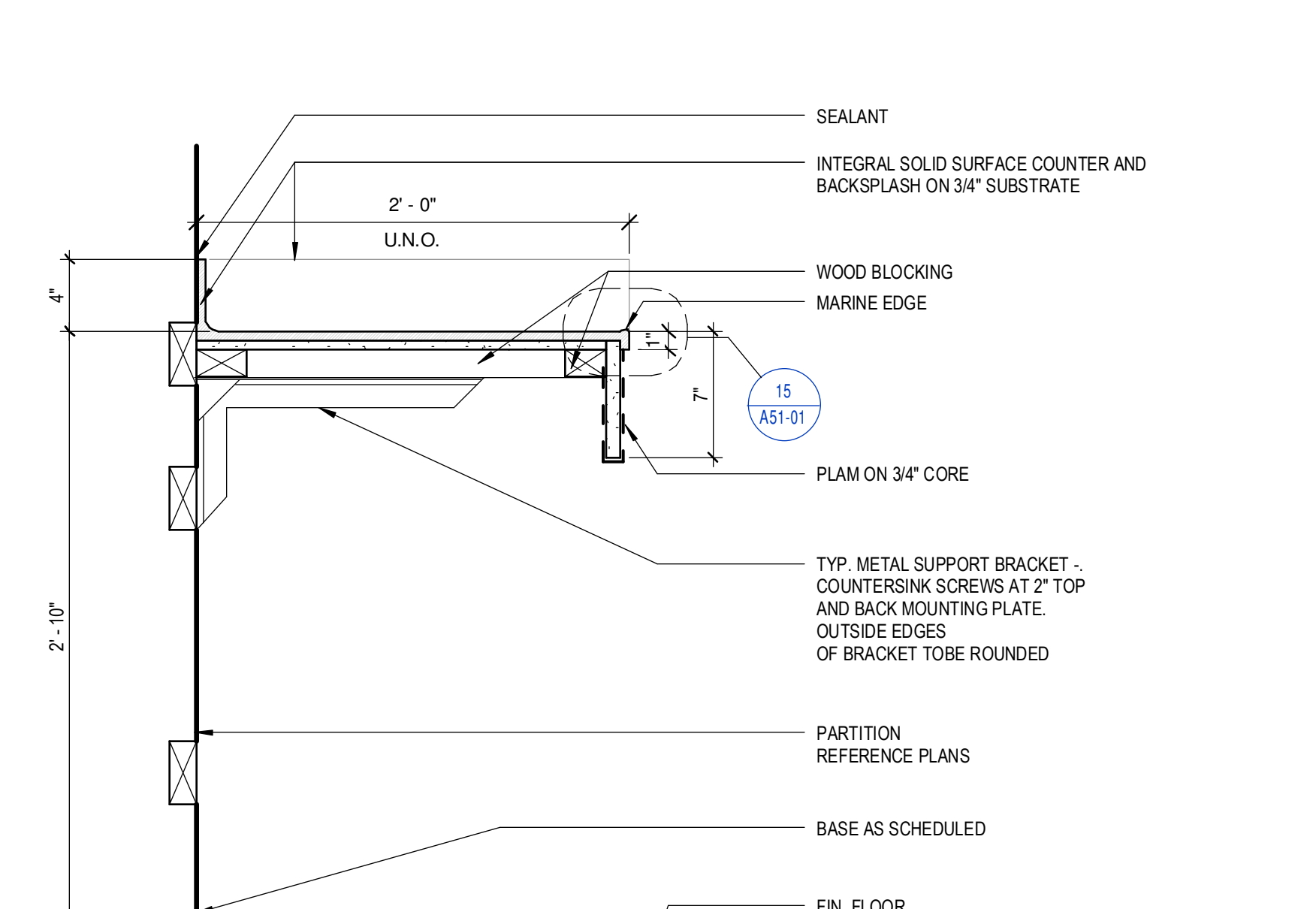
7 COUNTER W/ INTEGRAL SINK - ROUND
 1 1/2" = 1'-0"



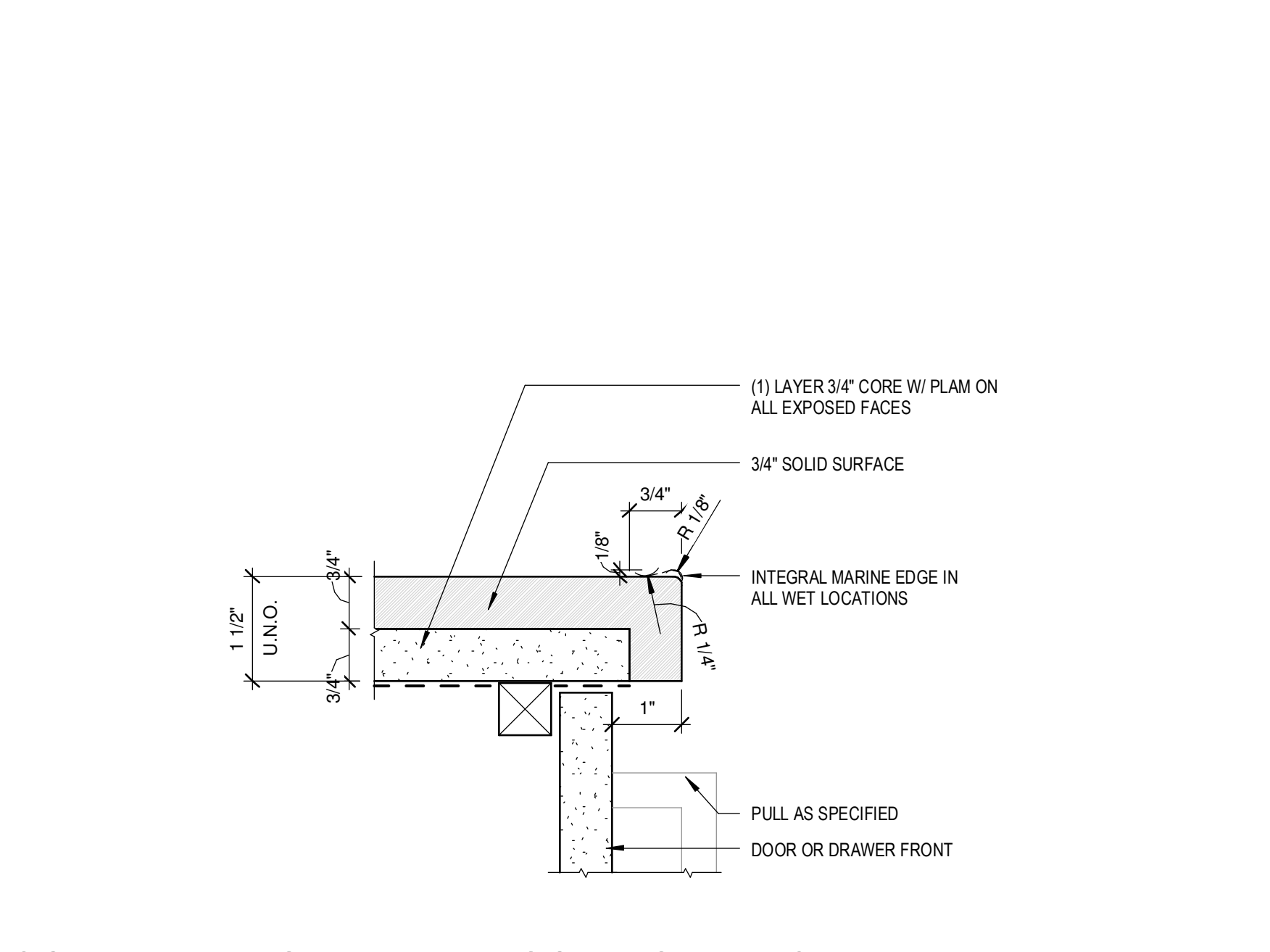
6 BASE CABINET - TRASH/RECYCLING W/TOE KICK
 1 1/2" = 1'-0"



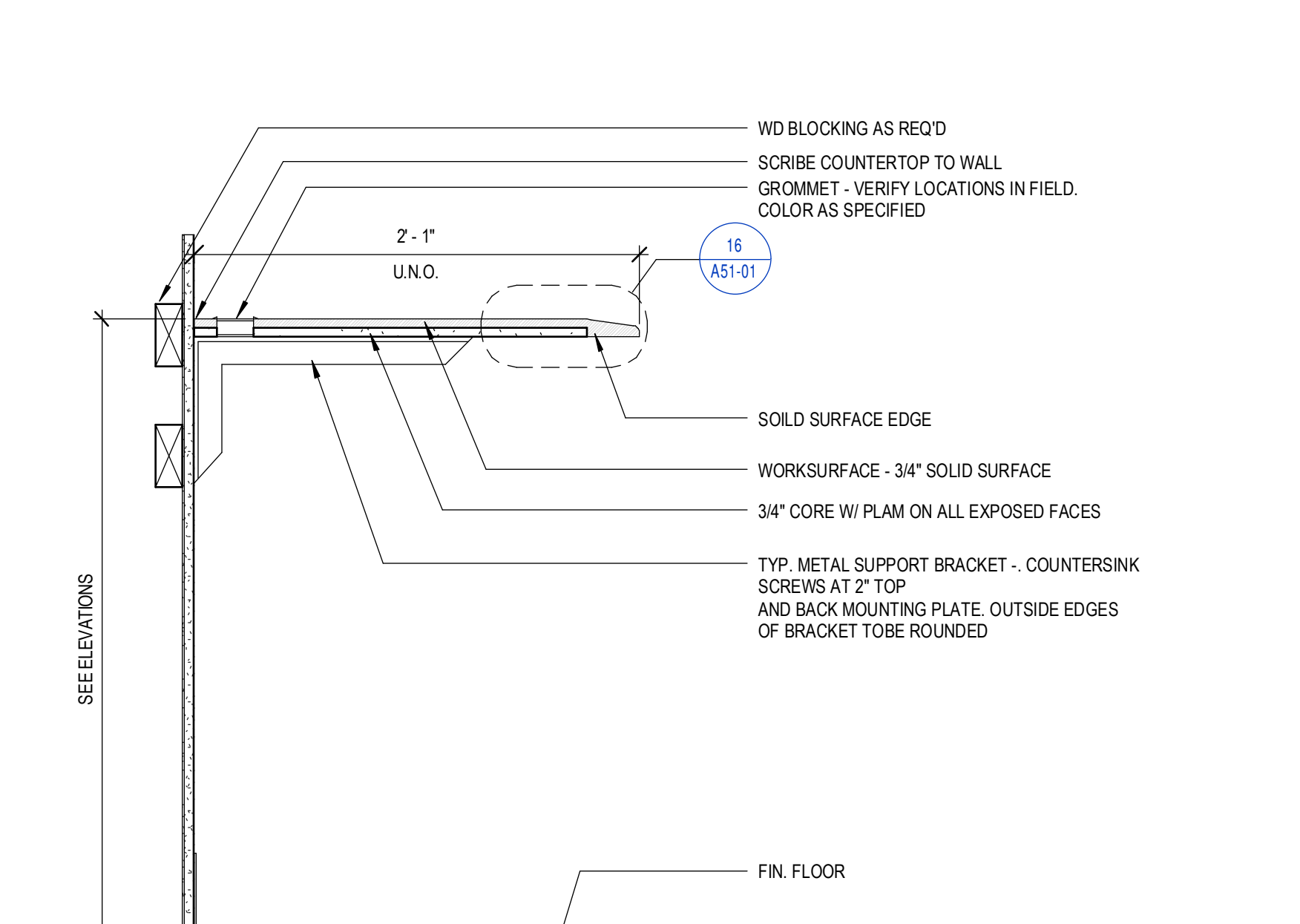
5 BASE CABINET W/ 4 DRAWER - SOLID SURFACE
 1 1/2" = 1'-0"



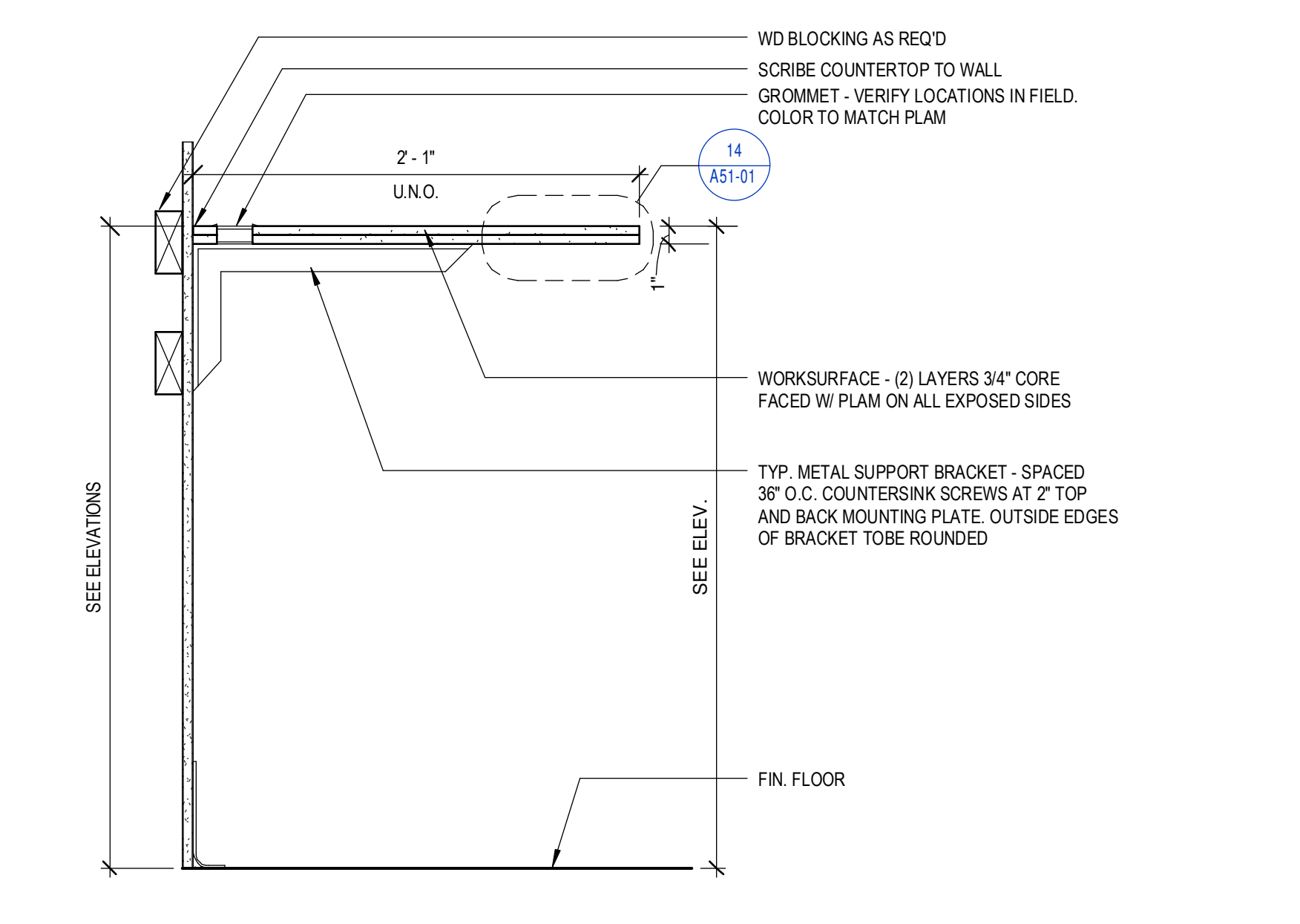
12 OPEN COUNTER
 1 1/2" = 1'-0"



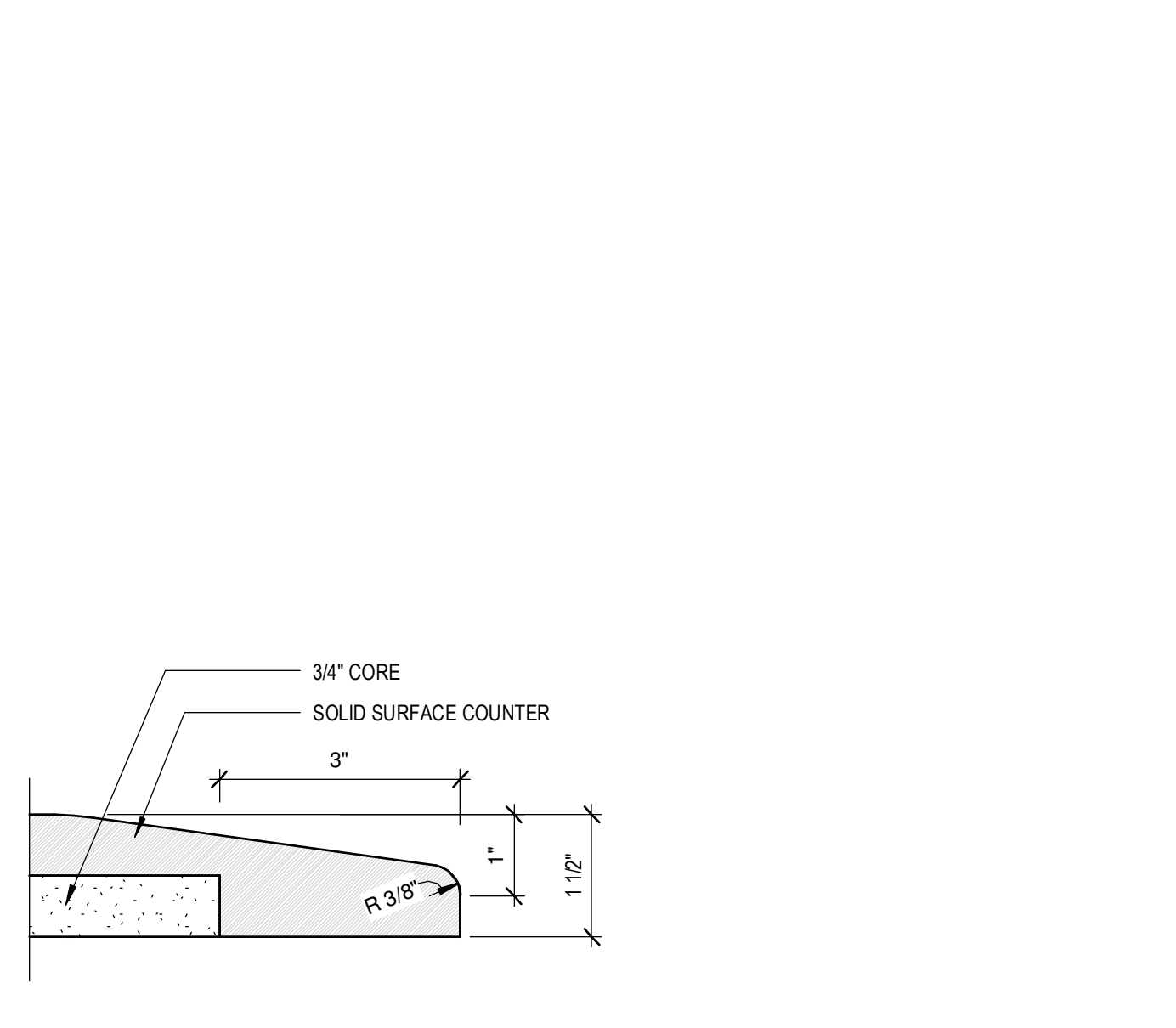
11 COUNTER EDGE DETAIL - SOLID SURFACE
 6" = 1'-0"



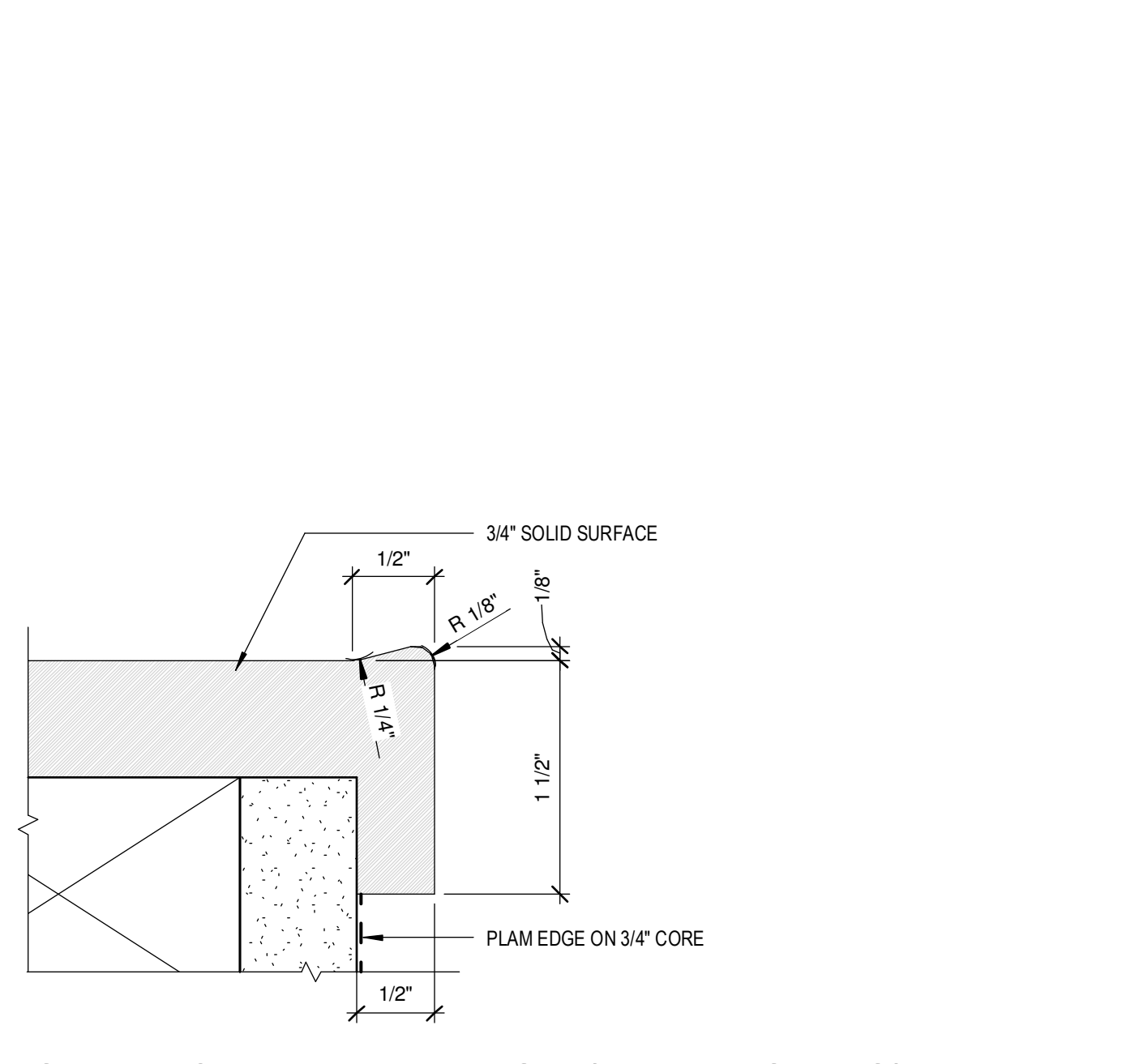
10 COUNTER W/OUT BASE CABINET - SOLID SURFACE
 1 1/2" = 1'-0"



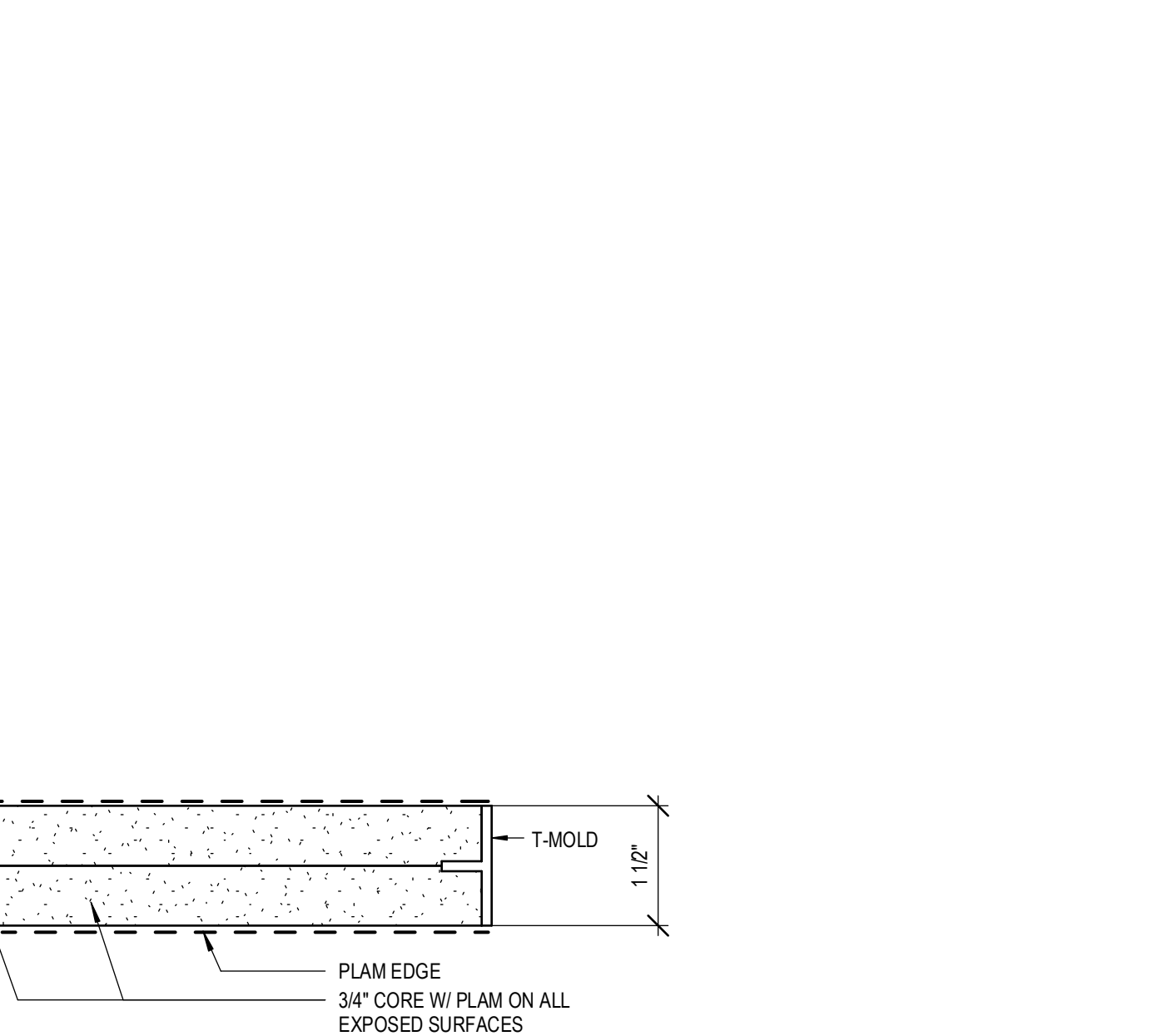
9 COUNTER W/OUT BASE CABINET - LAMINATE
 1 1/2" = 1'-0"



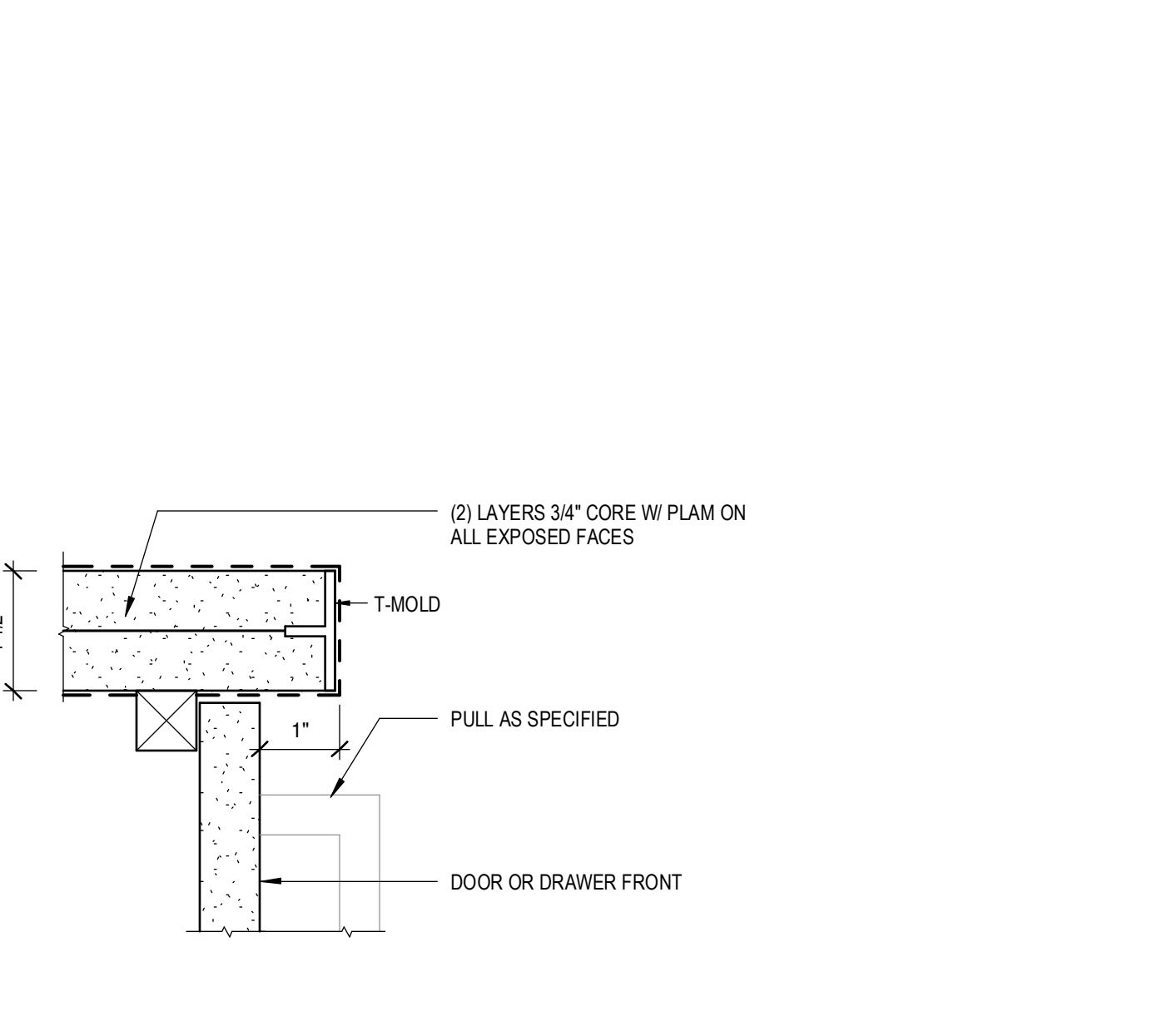
16 WORK SURFACE EDGE DETAIL - SSM
 6" = 1'-0"



15 SOLID SURFACE MARINE EDGE (AT ALL SINKS)
 6" = 1'-0"



14 WORK SURFACE EDGE DETAIL - LAMINATE
 6" = 1'-0"



13 COUNTER EDGE DETAIL - LAMINATE
 6" = 1'-0"