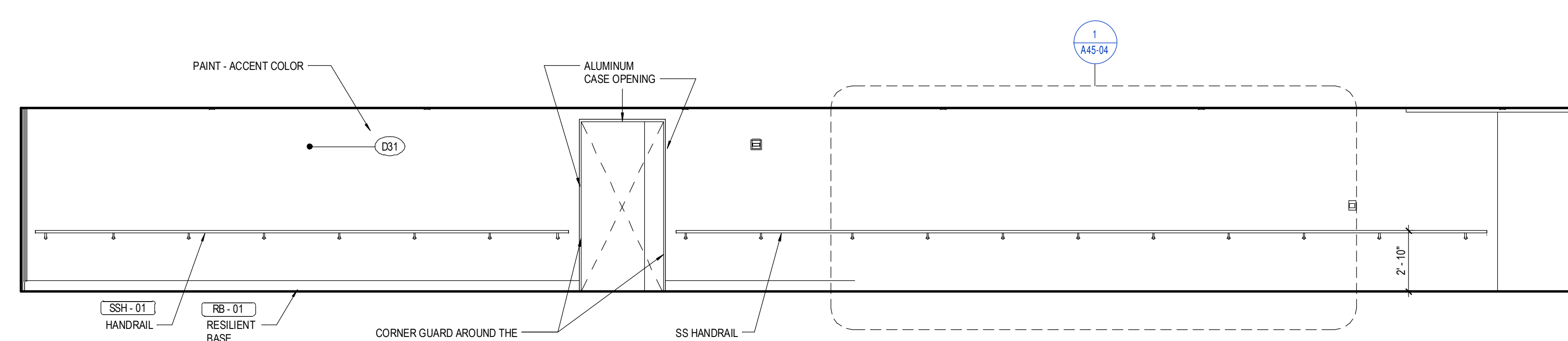


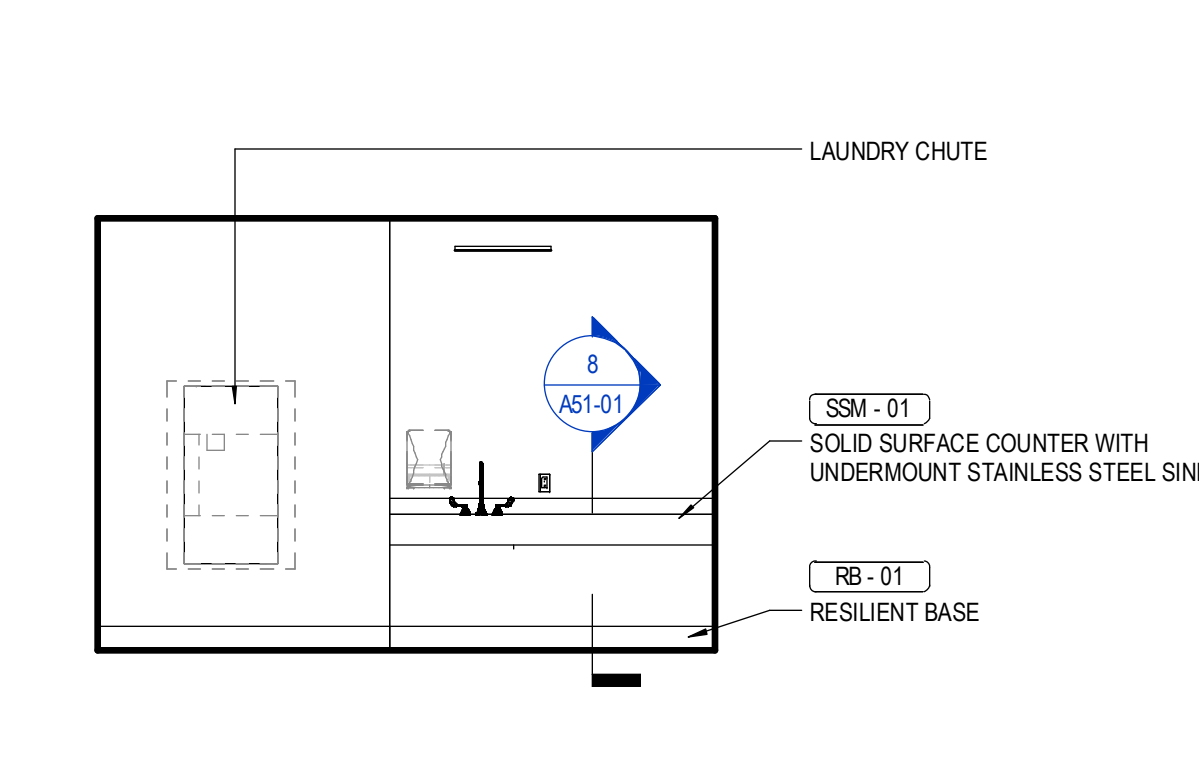
- OVERALL KEY PLAN
- 1 - GILMAN GARAGE
  - 2 - CONGRESS STREET
  - 3 - VISITOR GARAGE
  - 4 - EAST TOWER
  - 5 - CENTRAL UTILITY PLANT
  - 6 - BEAN BUILDING
  - 7 - RICHARDS BUILDING
  - 8 - MAINE GENERAL BUILDING

NO	ISSUE	DATE
2	ADDENDUM NO. 2	3/28/18
1	ADDENDUM NO. 1	3/22/18
NO	ISSUE	DATE

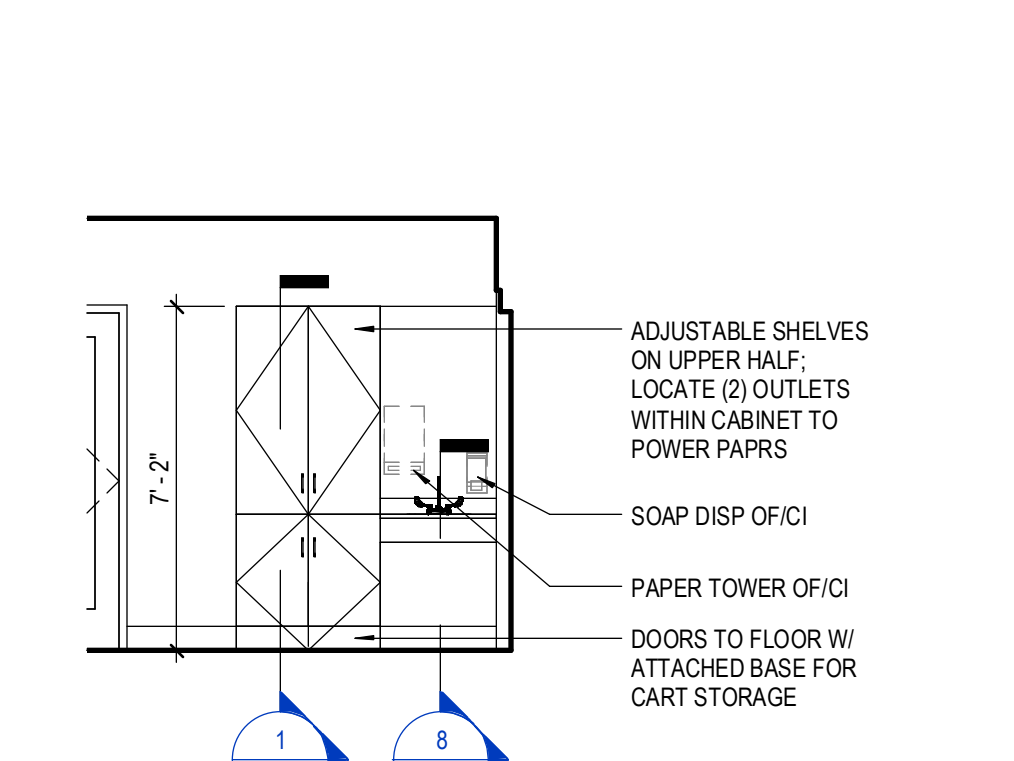
Job Number: 152181.000  
 Drawn: TEAM  
 Checked: JK  
 Approved: JK



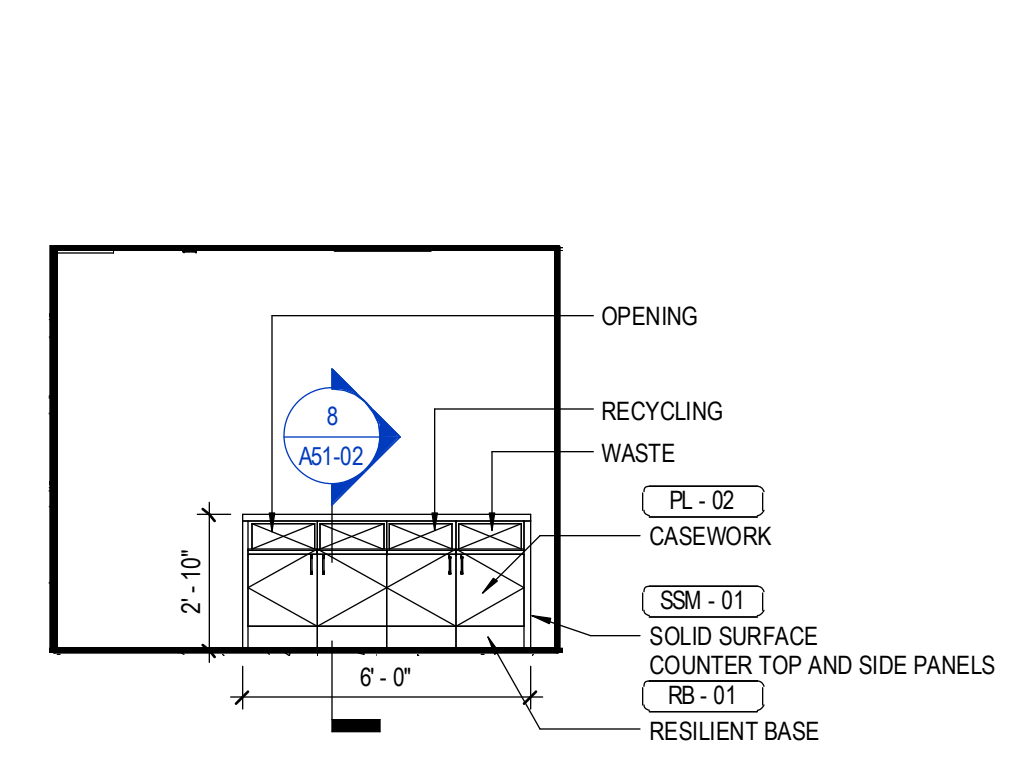
2 SOUTH INT. ELEV 1B  
 1/4" = 1'-0"



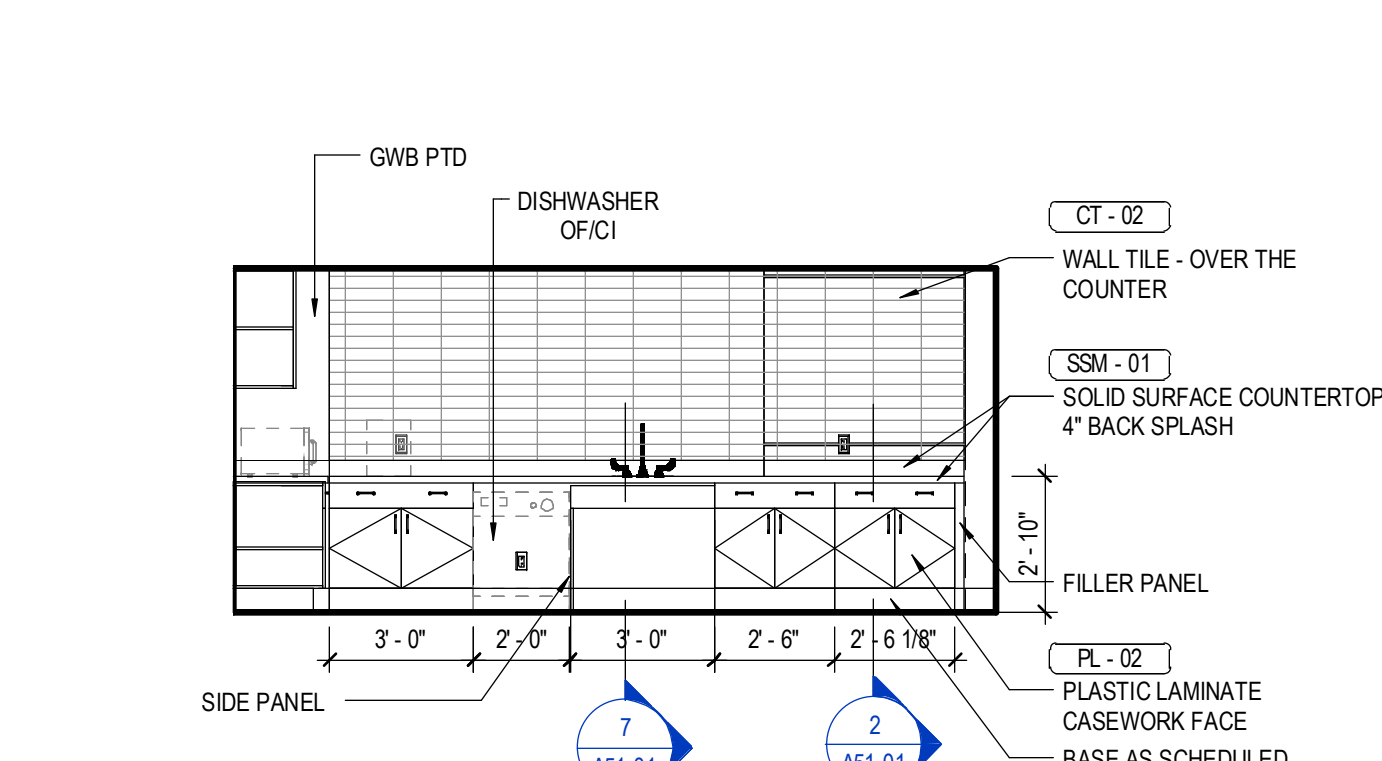
22 SOILED HOLDING - SOUTH  
 1/4" = 1'-0"



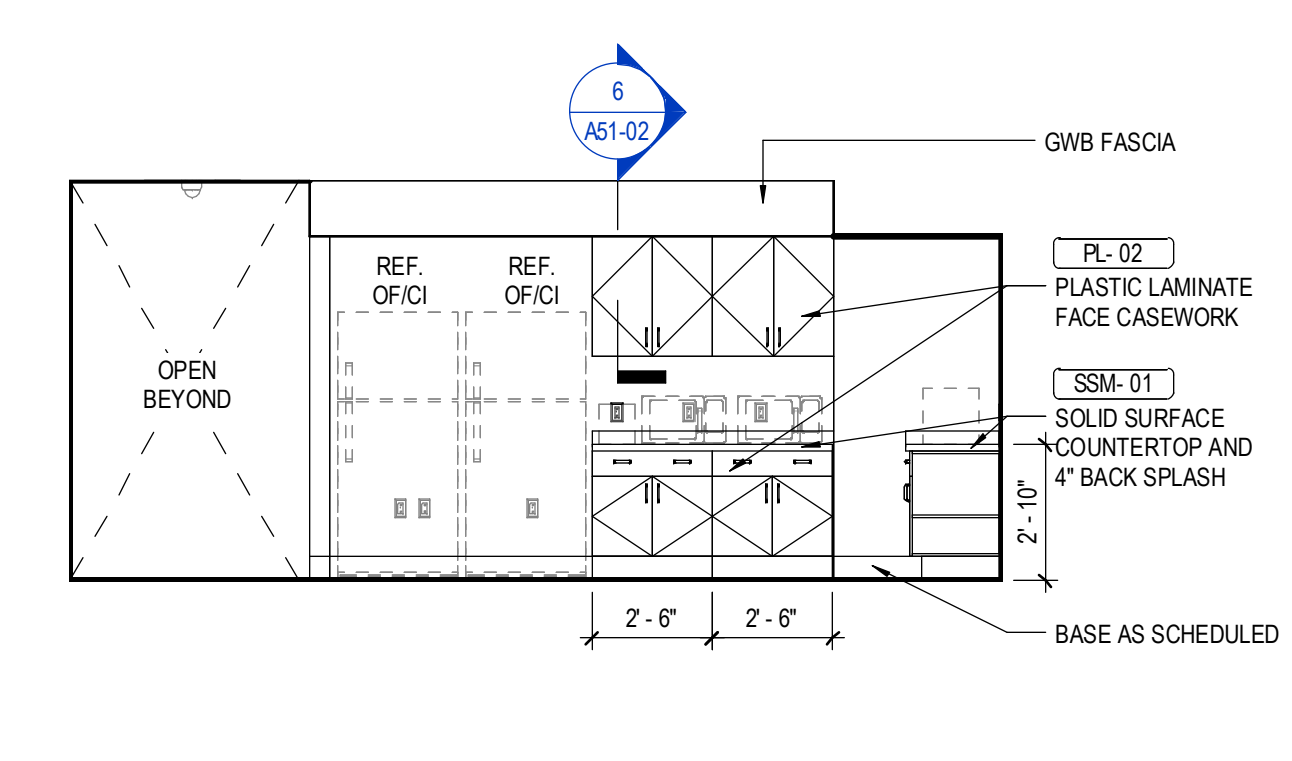
20 ALCOVE AT ISOLATION ROOM  
 1/4" = 1'-0"



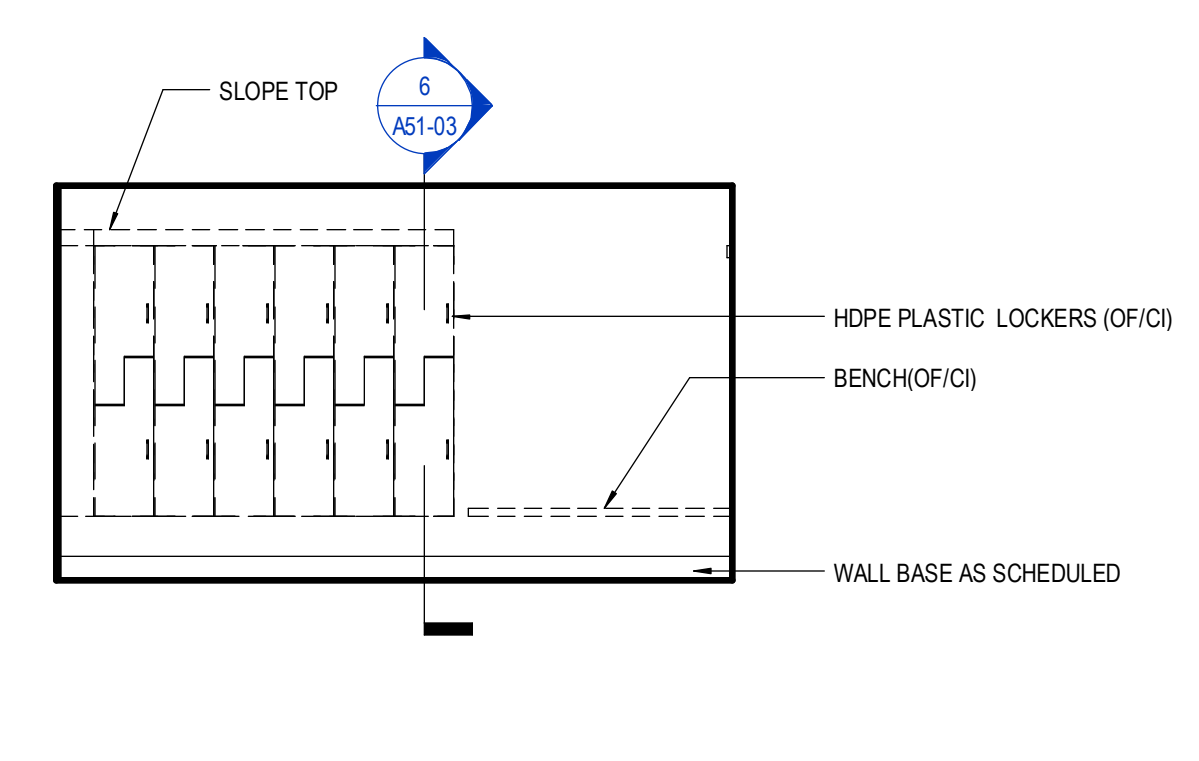
19 STAFF LOUNGE KITCHEN ISLAND  
 1/4" = 1'-0"



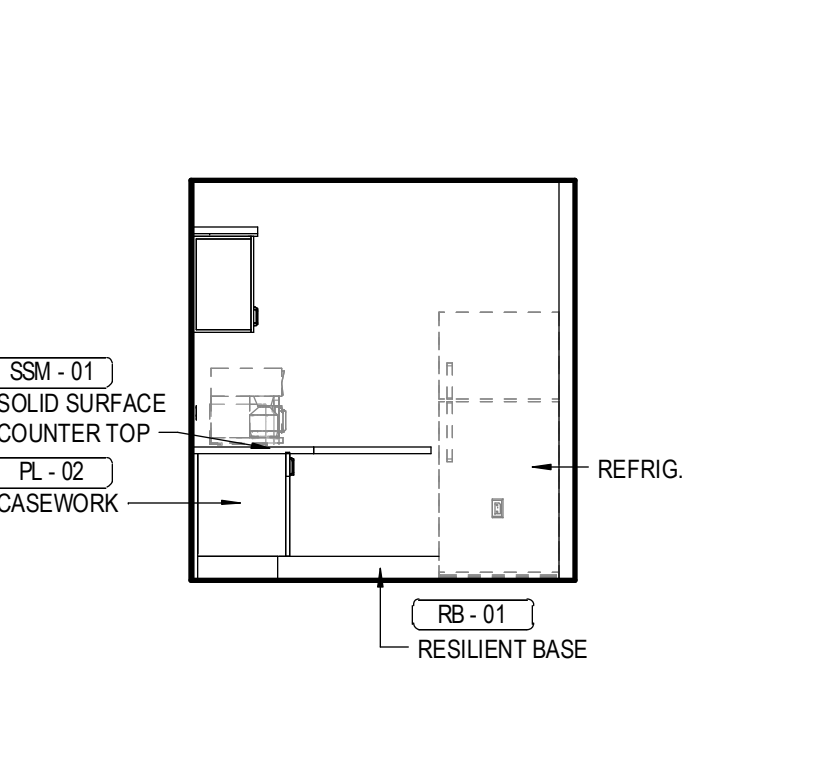
18 STAFF LOUNGE - 2  
 1/4" = 1'-0"



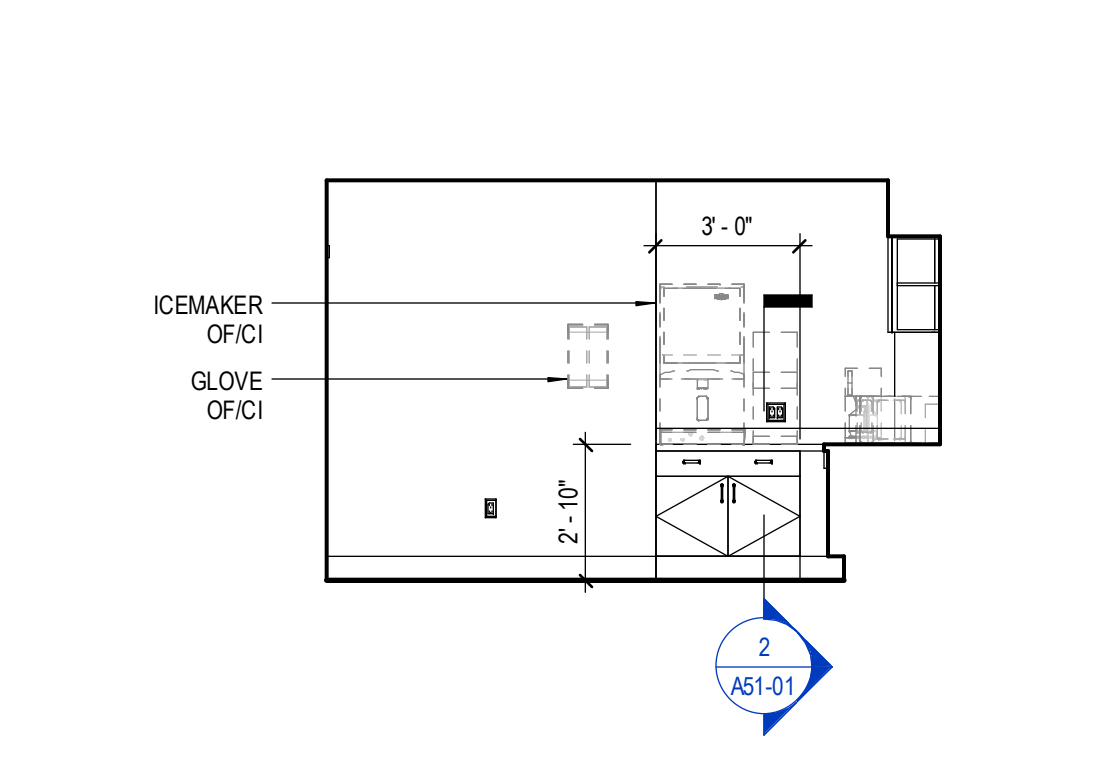
17 STAFF LOUNGE - 1  
 1/4" = 1'-0"



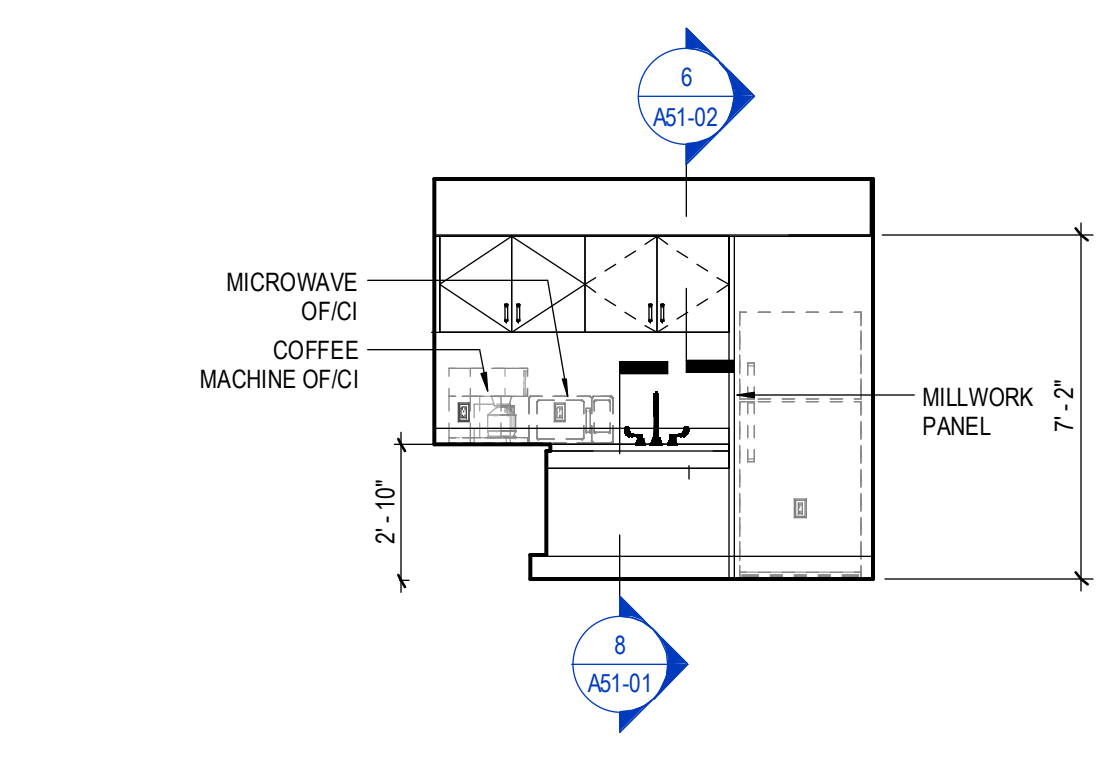
16 TYPICAL STAFF LOCKER  
 1/4" = 1'-0"



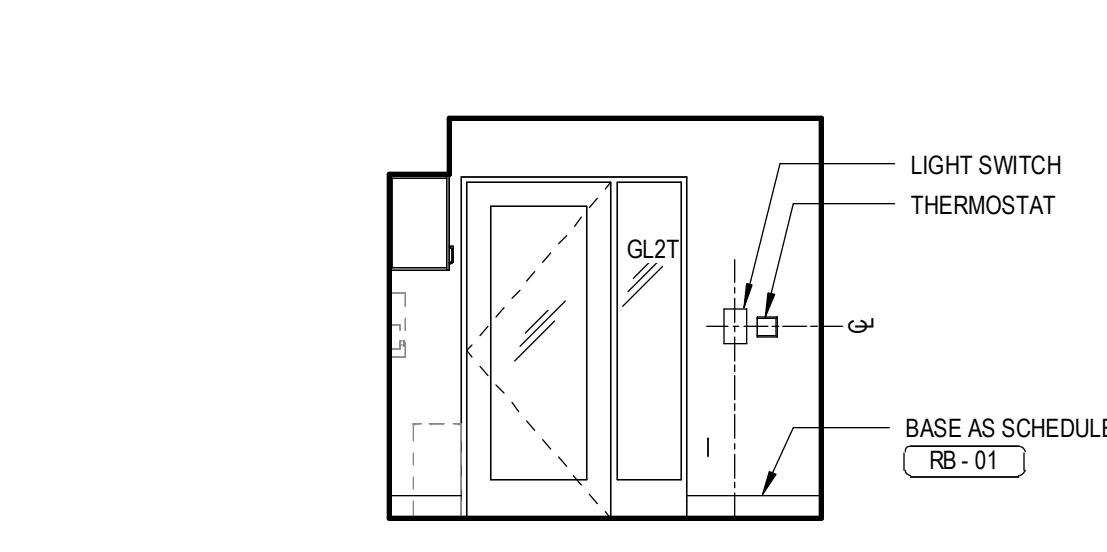
15 LEVEL 6 SECTOR 2 NOUR - NORTH  
 1/4" = 1'-0"



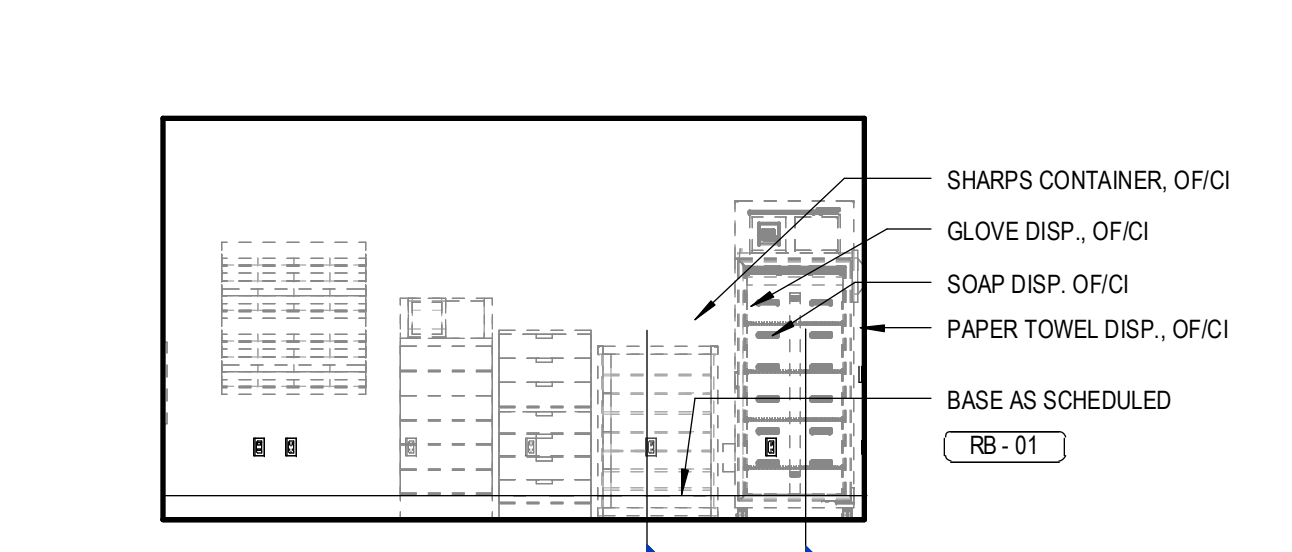
14A LEVEL 6 SECTOR 1 NOUR - WEST  
 1/4" = 1'-0"



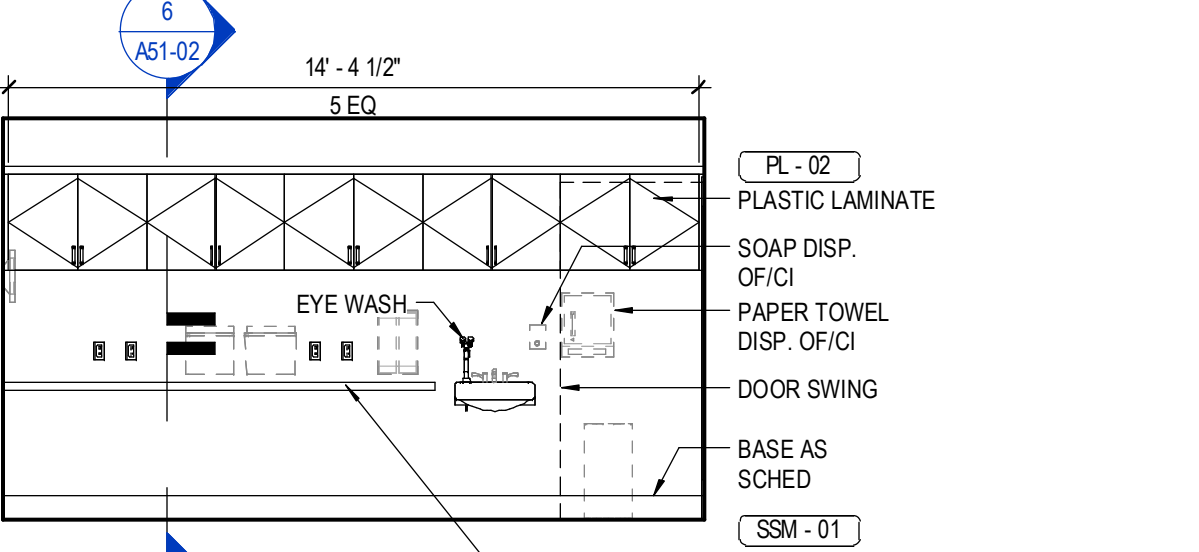
14 LEVEL 6 SECTOR 1 NOUR - NORTH  
 1/4" = 1'-0"



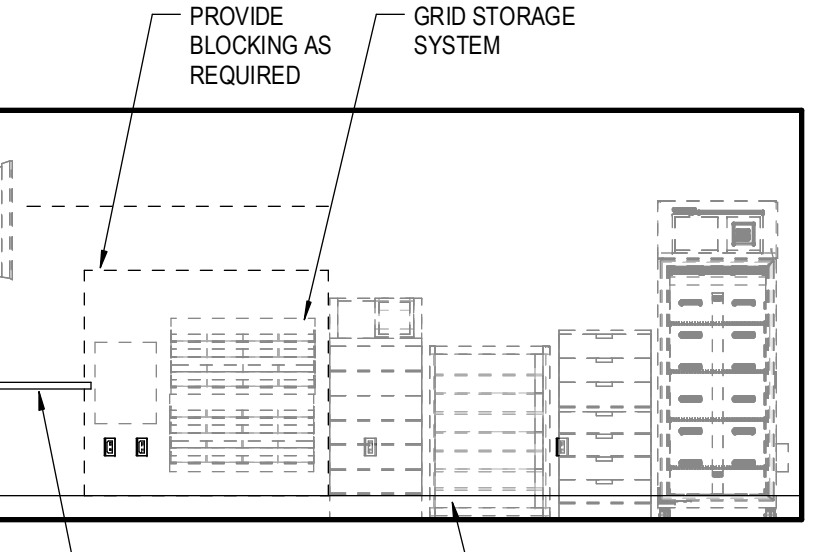
13A LEVEL 6 SECTOR 2 MED - EAST  
 1/4" = 1'-0"



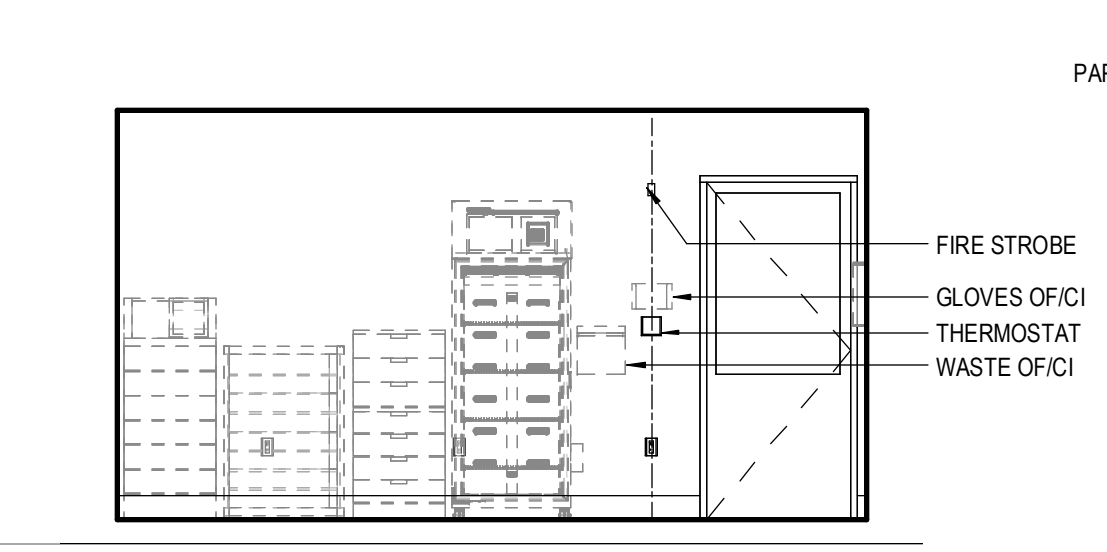
13 LEVEL 6 SECTOR 2 MED - SOUTH  
 1/4" = 1'-0"



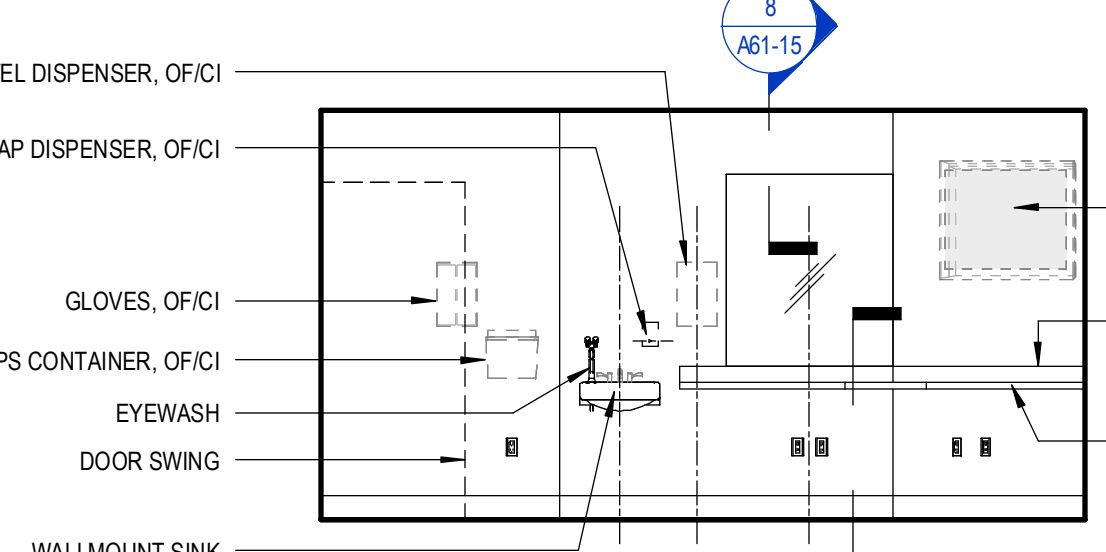
12 LEVEL 6 SECTOR 2 MED - NORTH  
 1/4" = 1'-0"



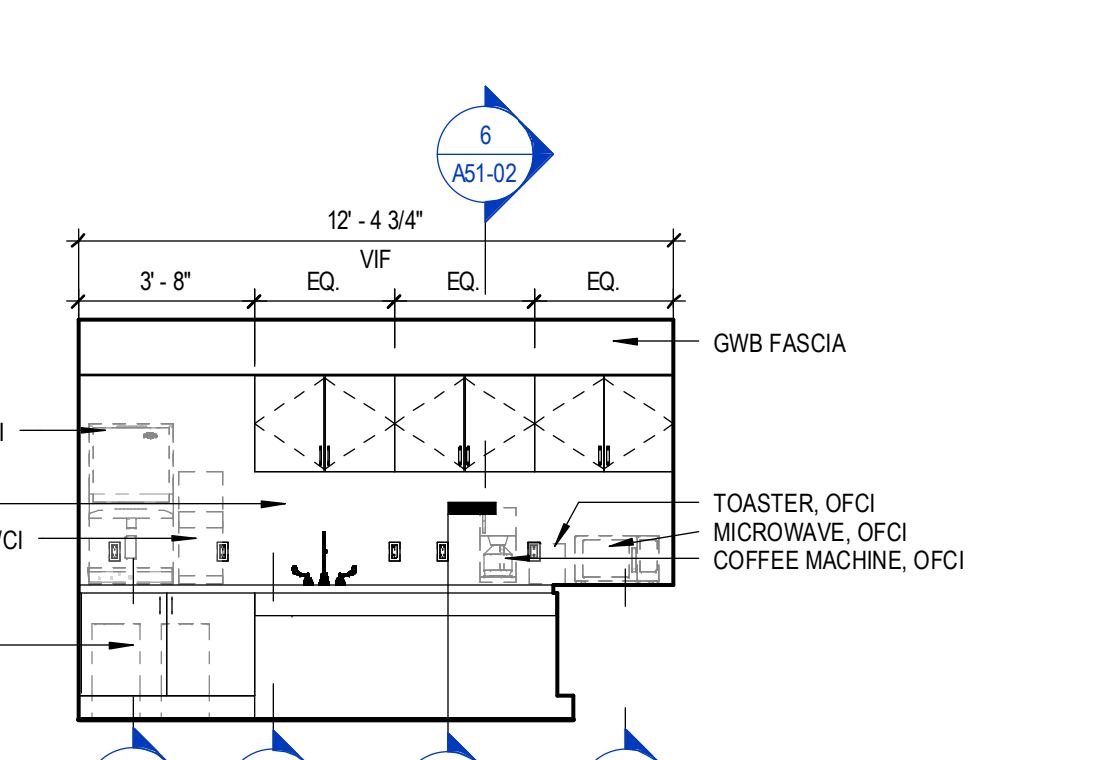
11 LEVEL 6 SECTOR 1 MED - NORTH  
 1/4" = 1'-0"



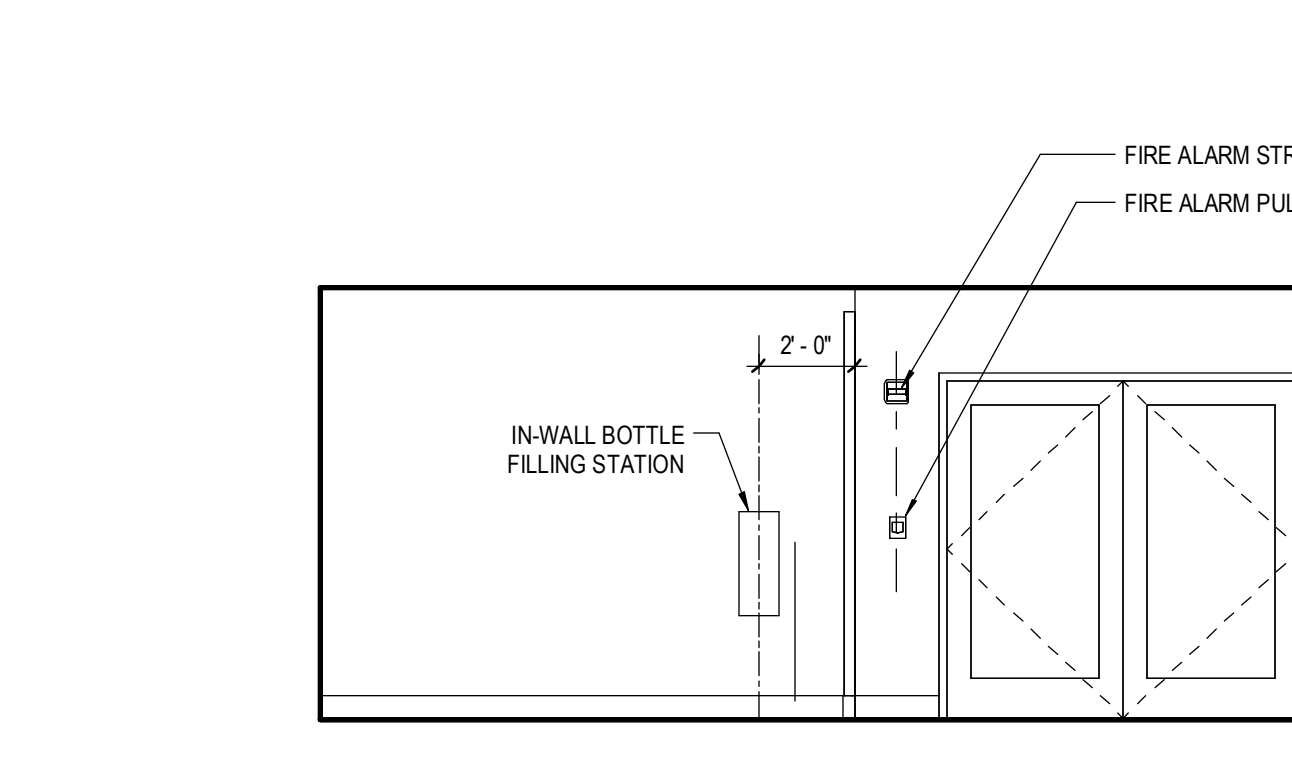
10A LEVEL 6 SECTOR 1 MED - SOUTH  
 1/4" = 1'-0"



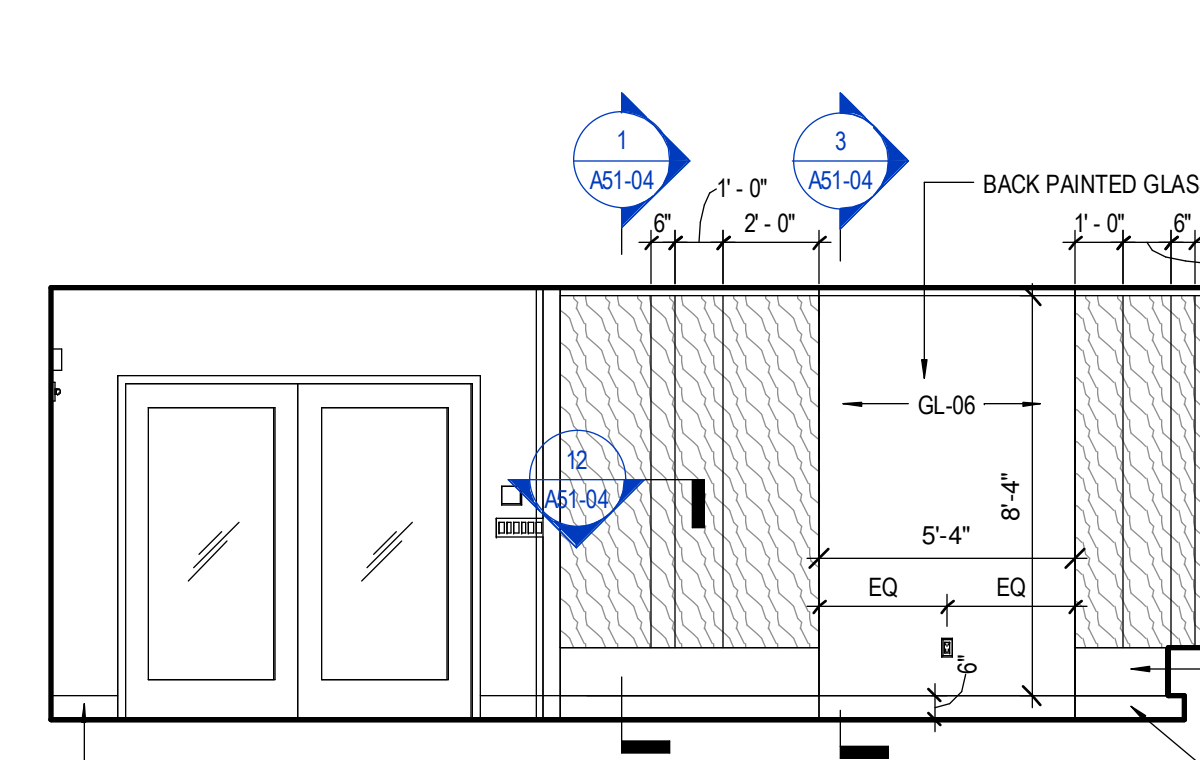
10 LEVEL 6 SECTOR 1 MED - WEST  
 1/4" = 1'-0"



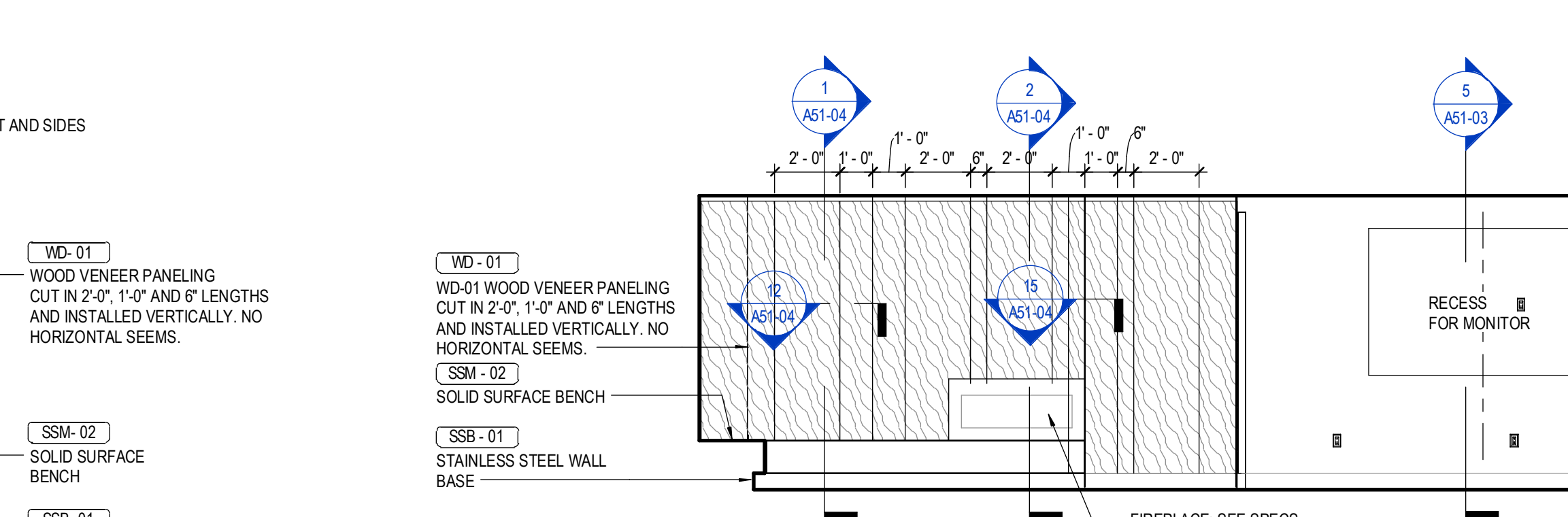
9 LEVEL 6 SECTOR 2 NOUR - WEST  
 1/4" = 1'-0"



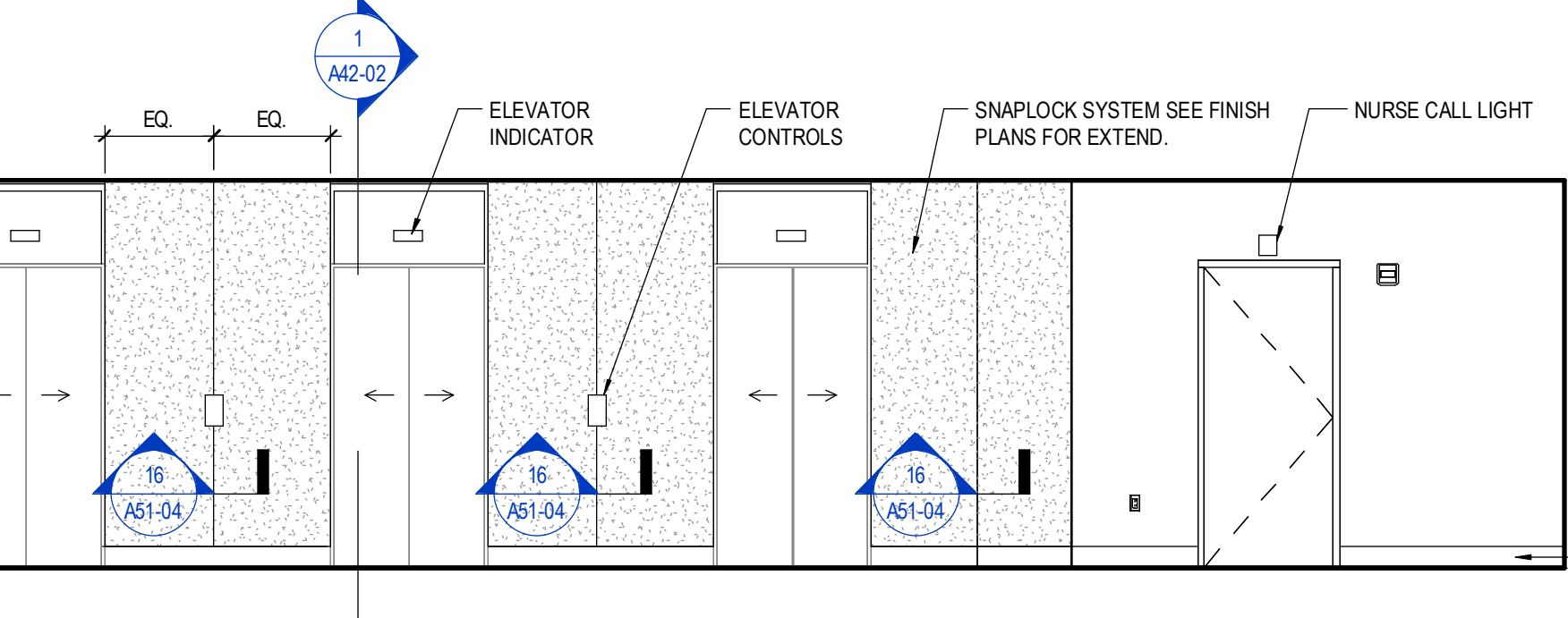
8 FAMILY LOUNGE EAST INT. ELEV 3B  
 1/4" = 1'-0"



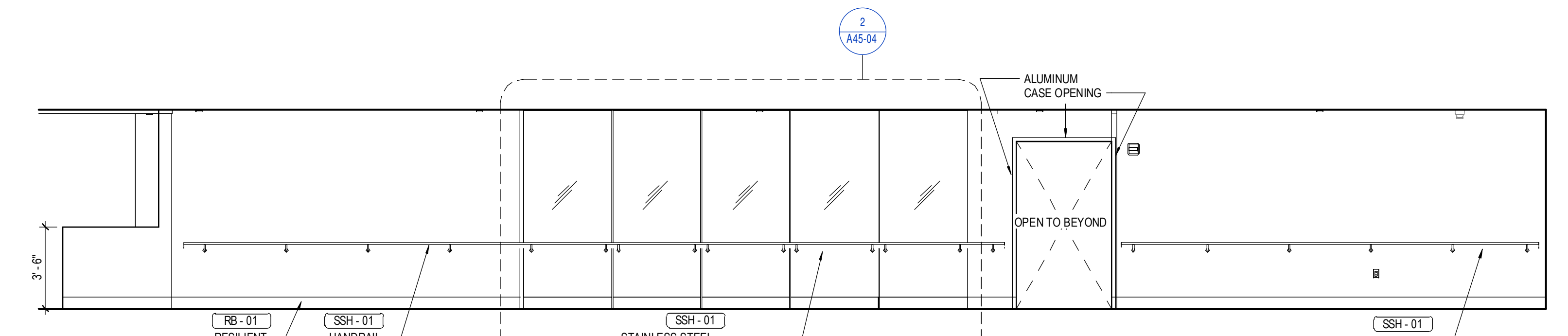
7 FAMILY LOUNGE WEST INT. ELEV.  
 1/4" = 1'-0"



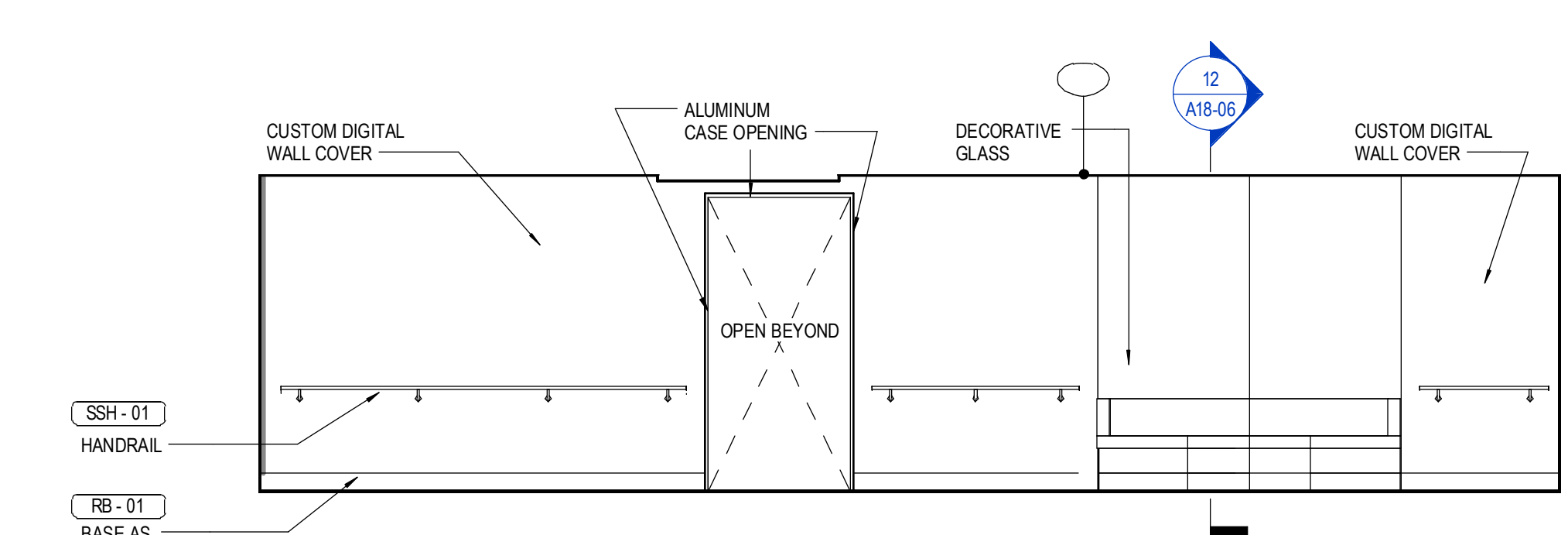
6 FAMILY LOUNGE NORTH INT. ELEV. 3A  
 1/4" = 1'-0"



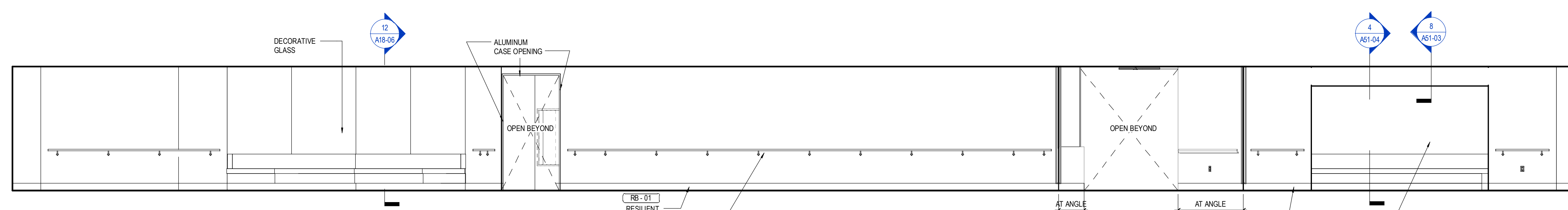
5 FAMILY LOUNGE SOUTH INT. ELEV. 3C  
 1/4" = 1'-0"



4 SOUTH INT. ELEV 2B  
 1/4" = 1'-0"



3 NORTH INT. ELEV 2A  
 1/4" = 1'-0"



1 NORTH INT. ELEV 1A  
 1/4" = 1'-0"

3/29/2018 5:21:51 PM 152181.MXD East Tower 6 & 7.rvt JK