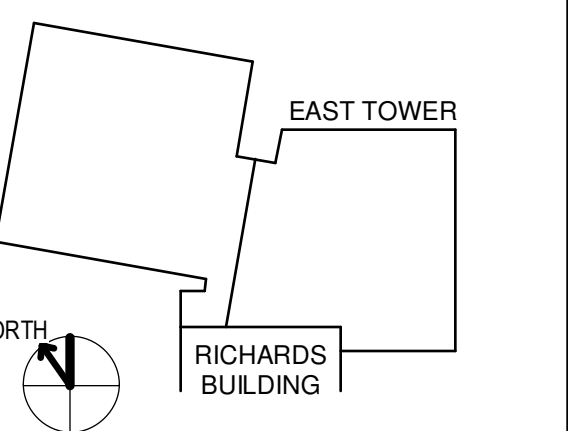
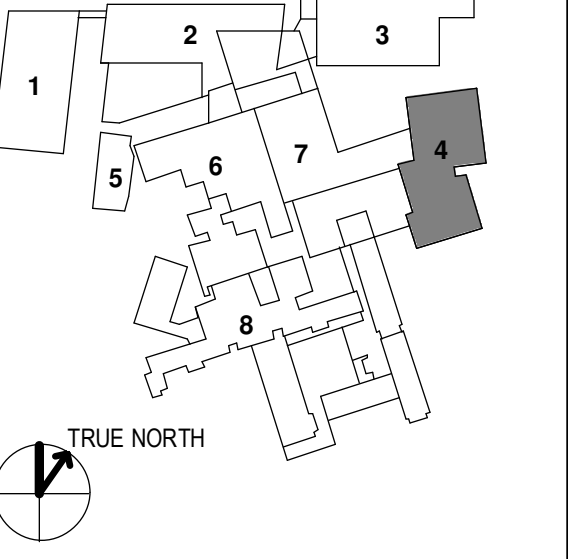




KEY PLANS



- OVERALL KEY PLAN
- 1 - GILMAN GARAGE
 - 2 - CONGRESS STREET
 - 3 - VISITOR GARAGE
 - 4 - EAST TOWER
 - 5 - CENTRAL UTILITY PLANT
 - 6 - BEAN BUILDING
 - 7 - RICHARDS BUILDING
 - 8 - MAINE GENERAL BUILDING



CONSTRUCTION DOCUMENTS
 JANUARY 26, 2018

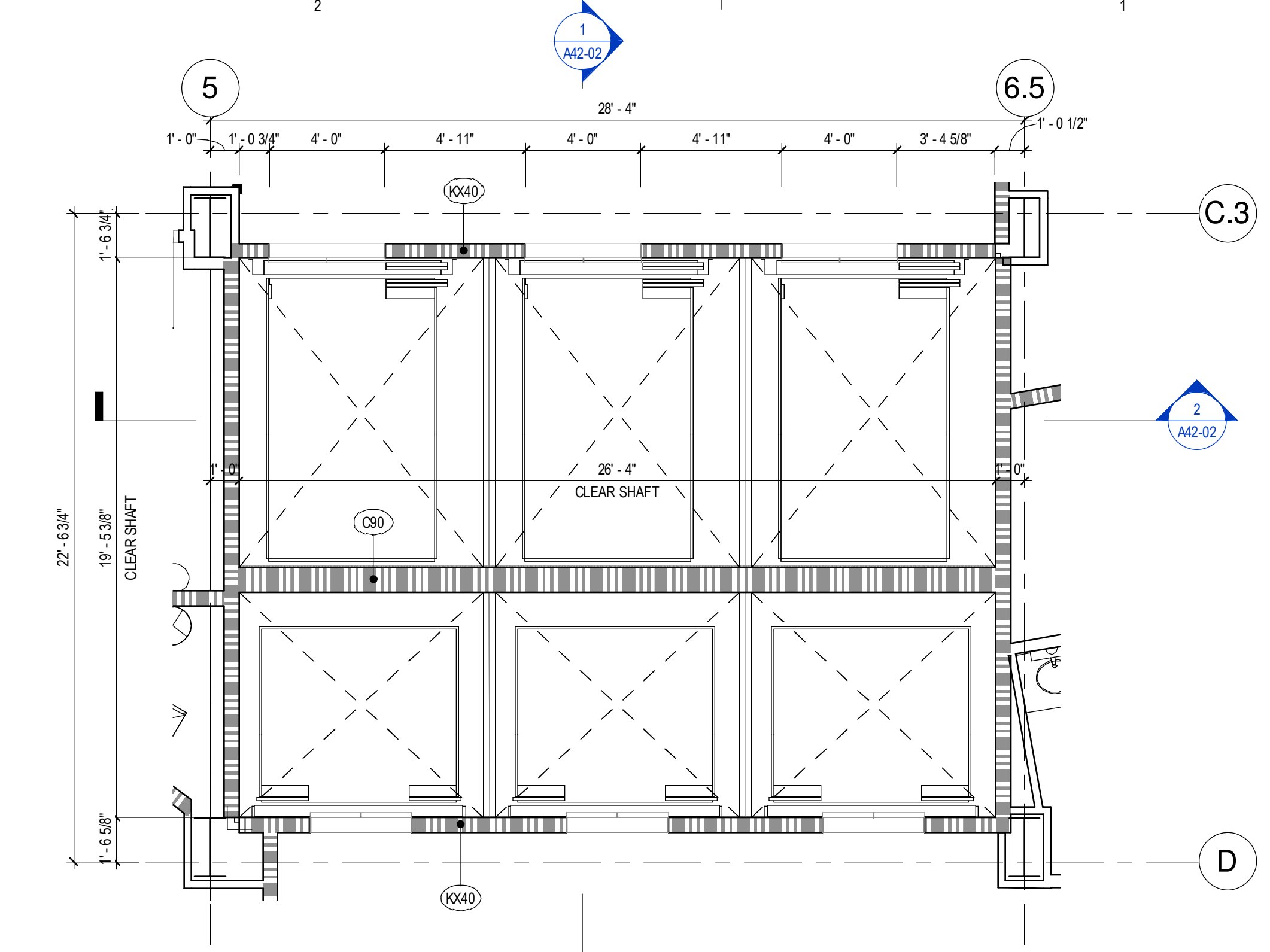
NO	ISSUE	DATE
2	ADDENDUM NO. 2	3/28/18
1	ADDENDUM NO. 1	3/22/18

Job Number: 152181.000
 Drawn: TEAM
 Checked: JK
 Approved: JK

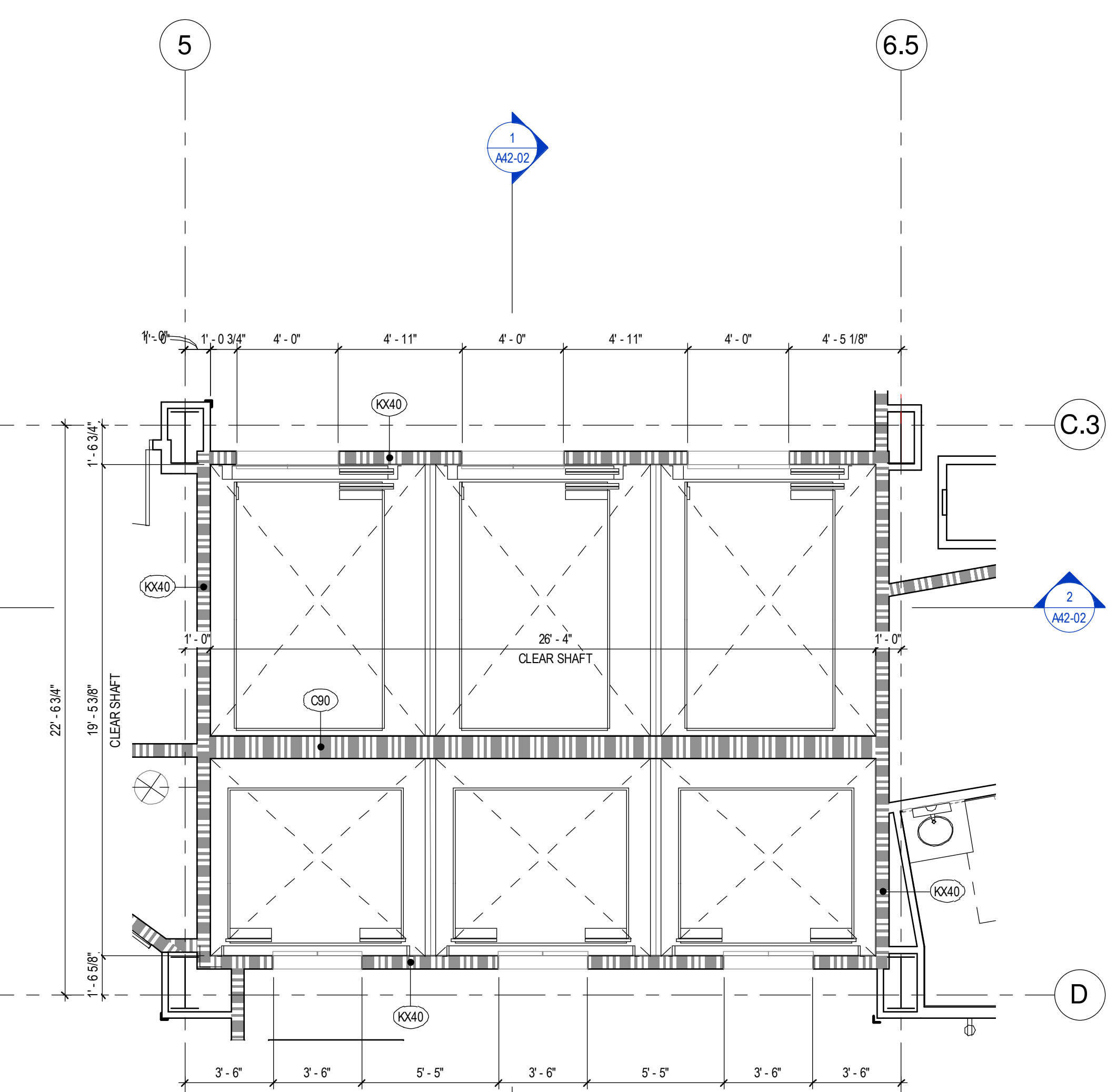
TITLE
**HOISTWAY -
 PLANS & RCPS**

SHEET NUMBER

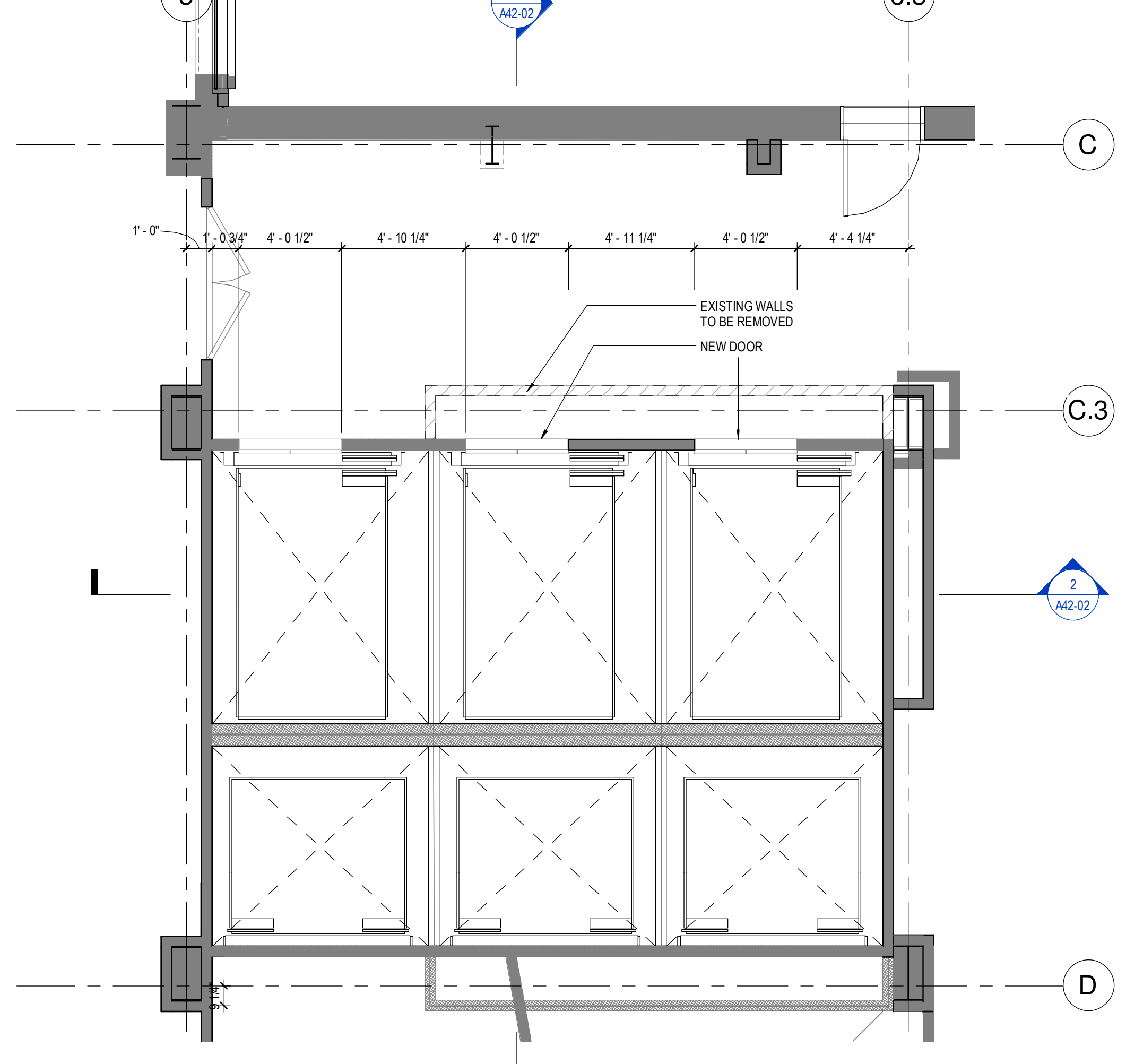
A42-01



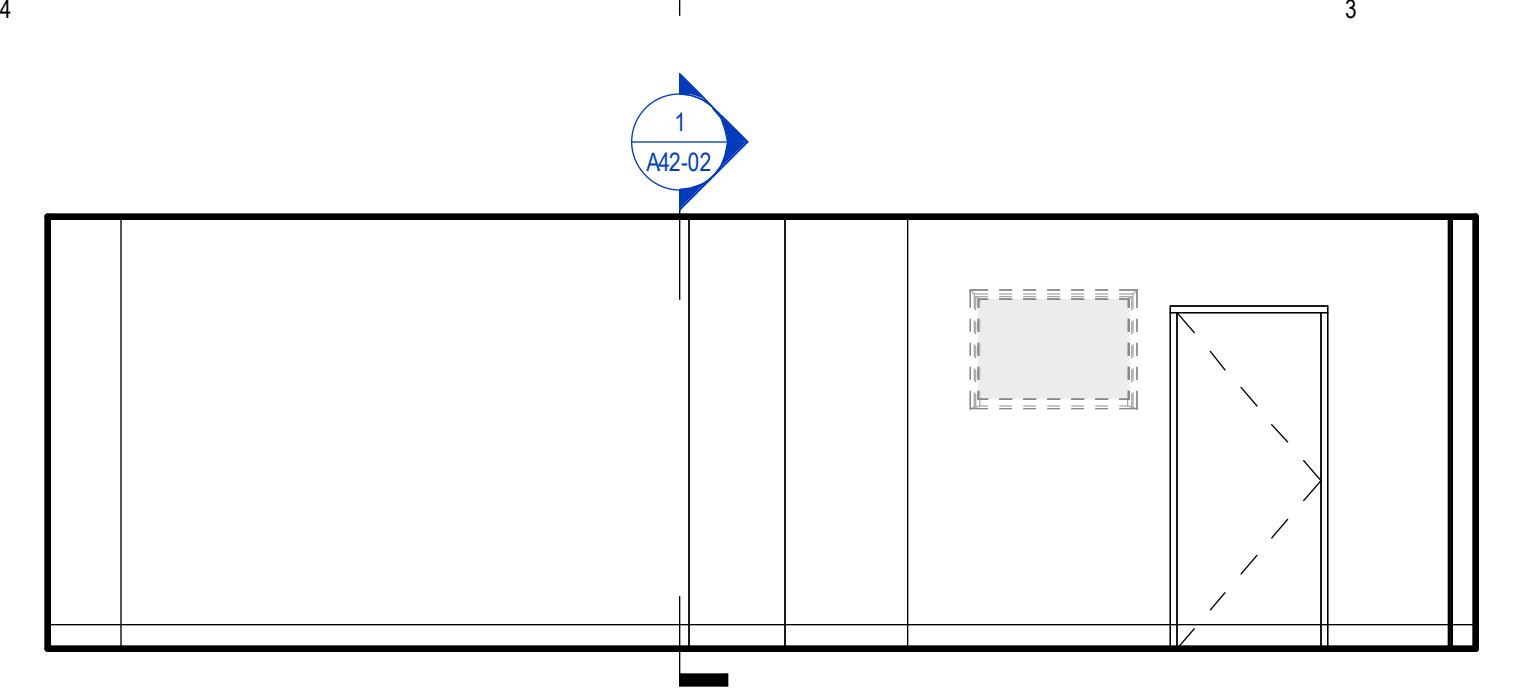
3 HOISTWAY - LEVEL 7
 1/4" = 1'-0"



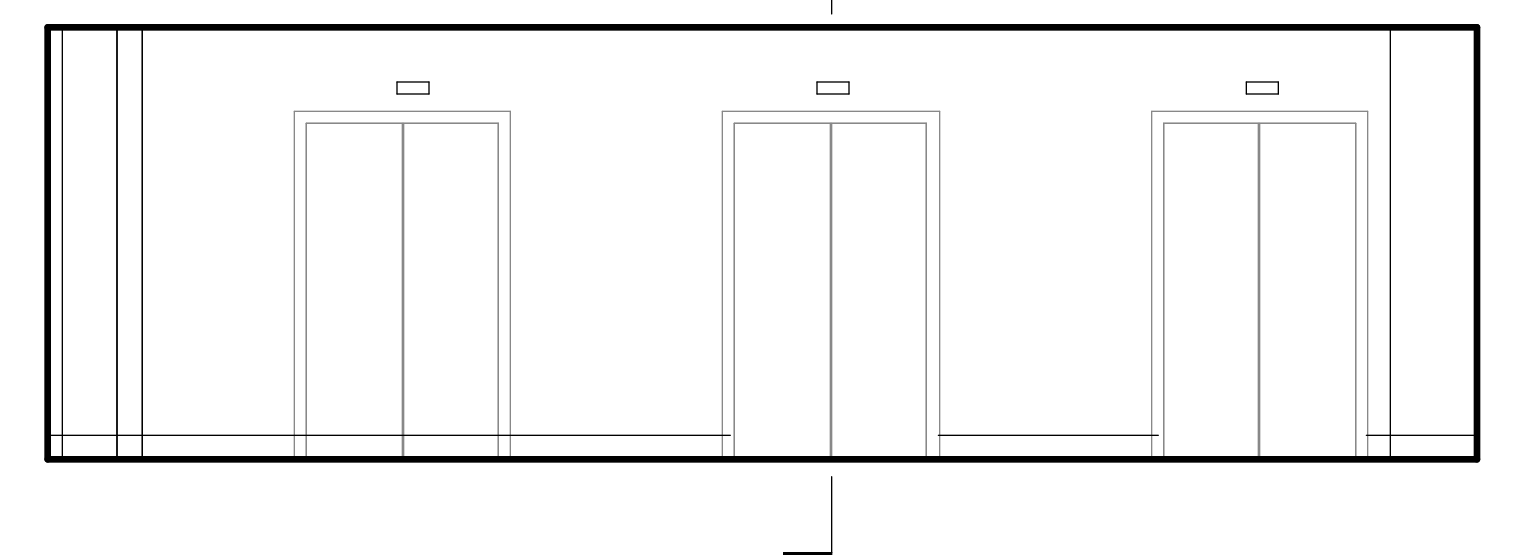
2 HOISTWAY - LEVEL 6
 1/4" = 1'-0"



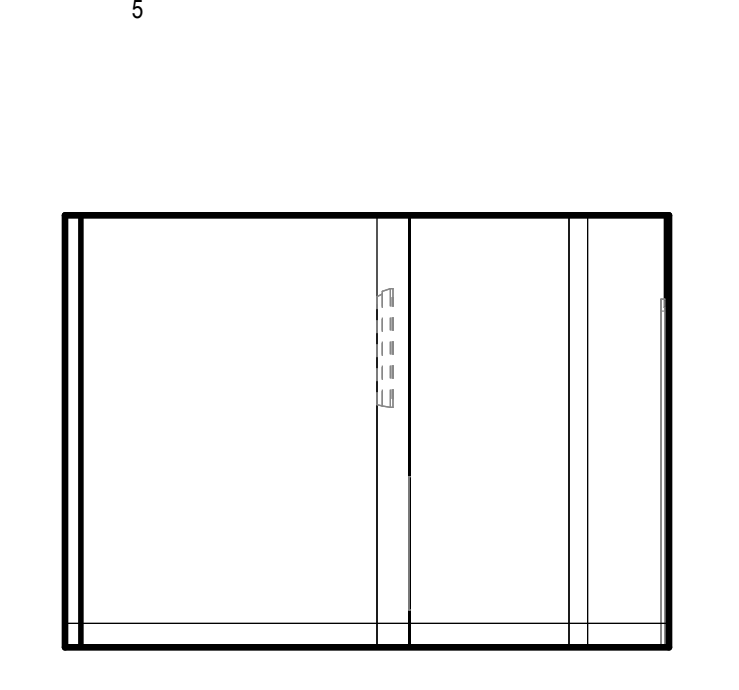
1 HOISTWAY - LEVEL 5
 1/4" = 1'-0"



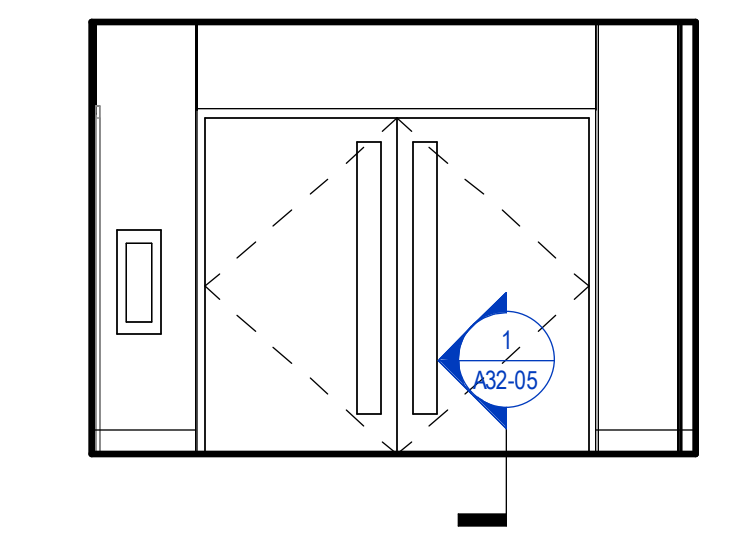
10 HELIPAD LOBBY - NORTH
 1/4" = 1'-0"



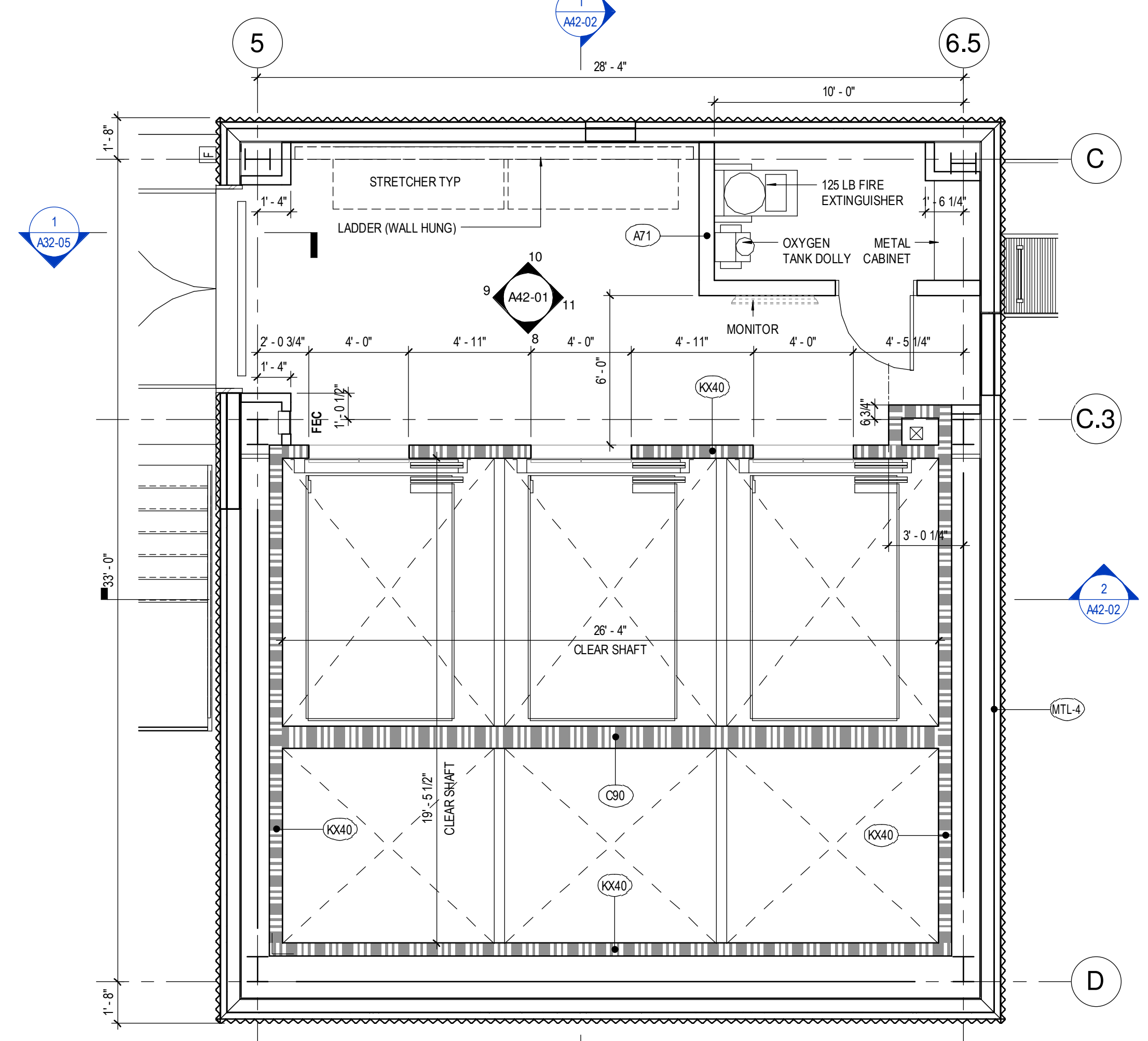
8 HELIPAD LOBBY - SOUTH
 1/4" = 1'-0"



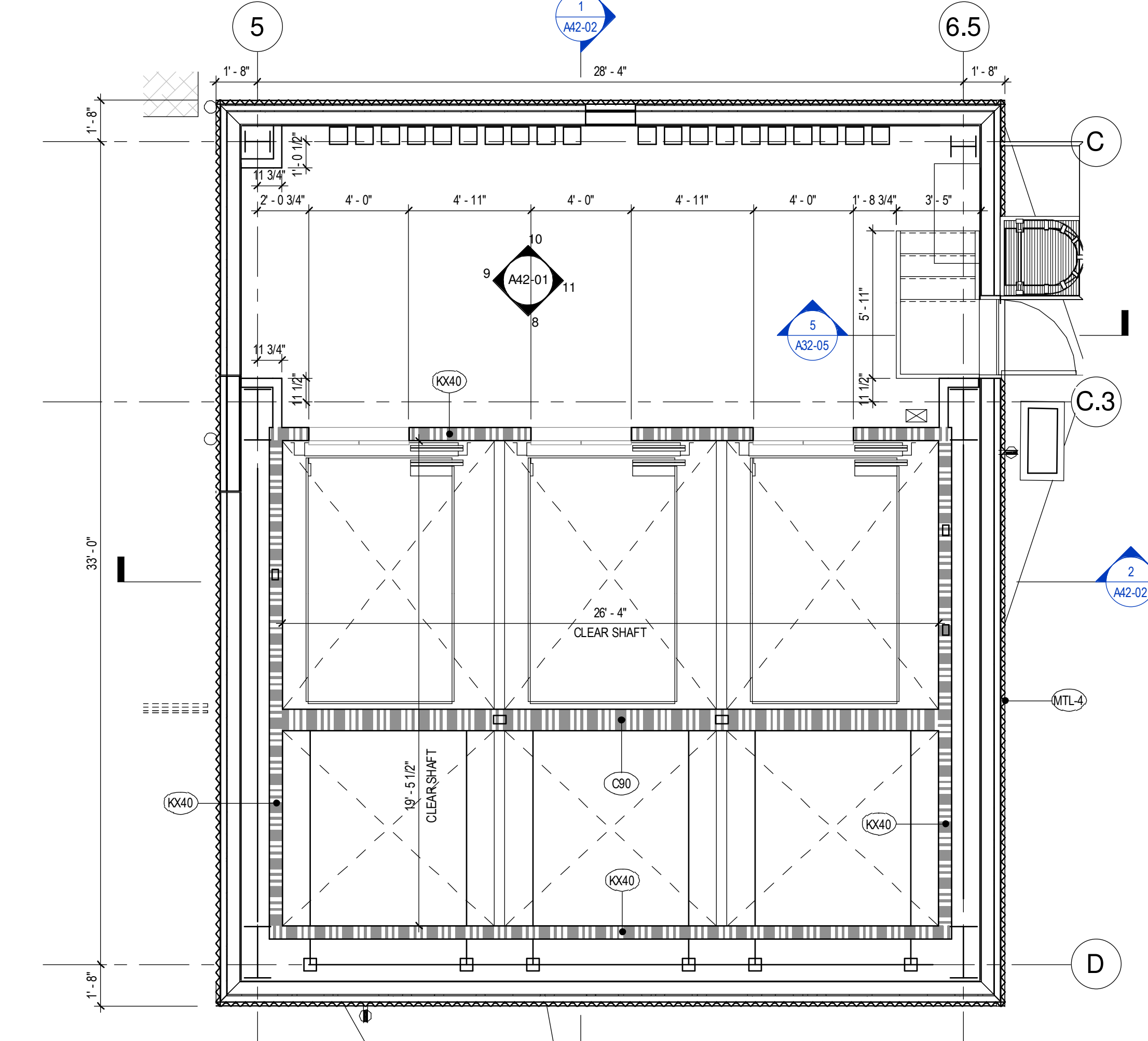
11 HELIPAD LOBBY - EAST
 1/4" = 1'-0"



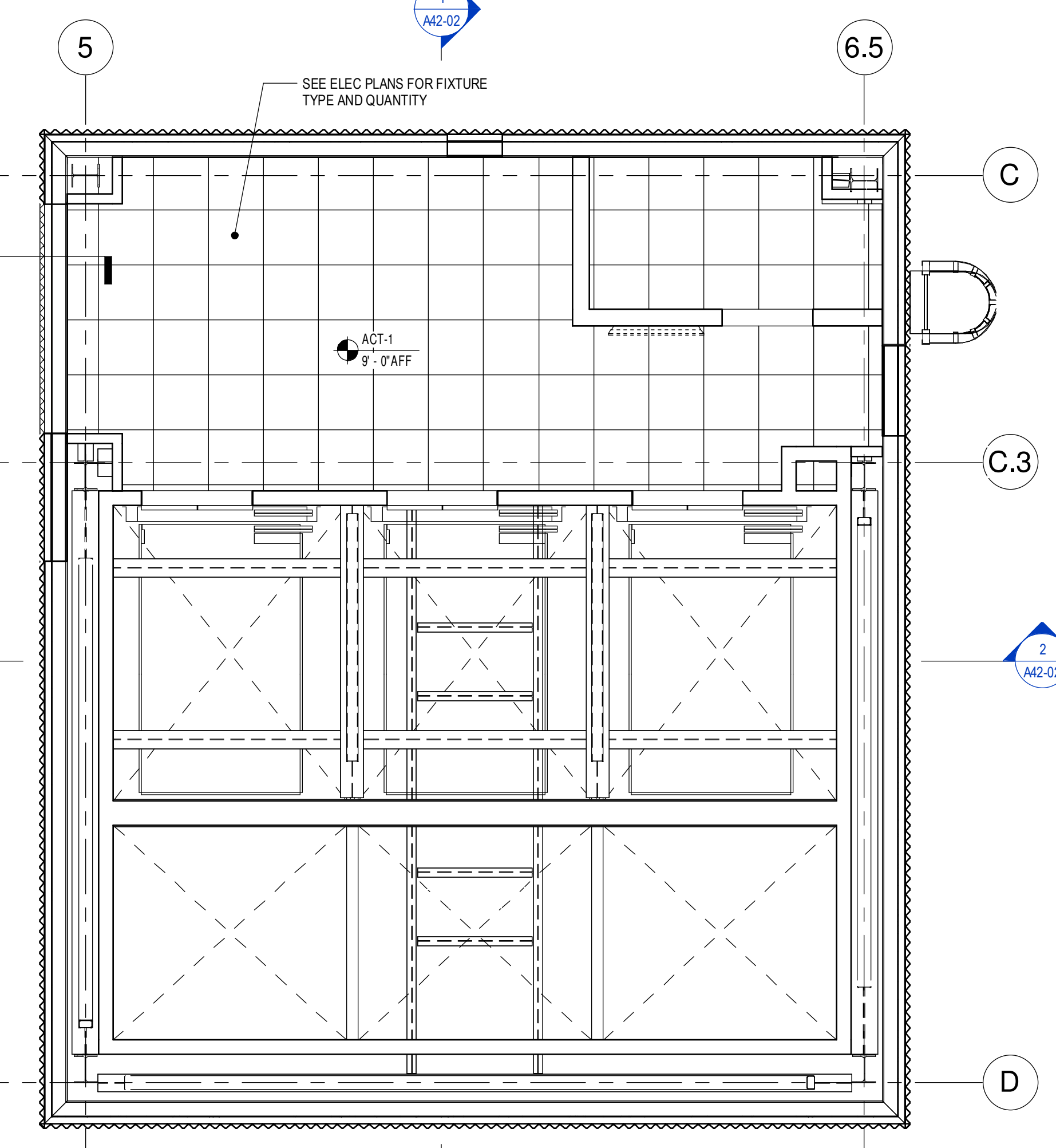
9 HELIPAD LOBBY - WEST
 1/4" = 1'-0"



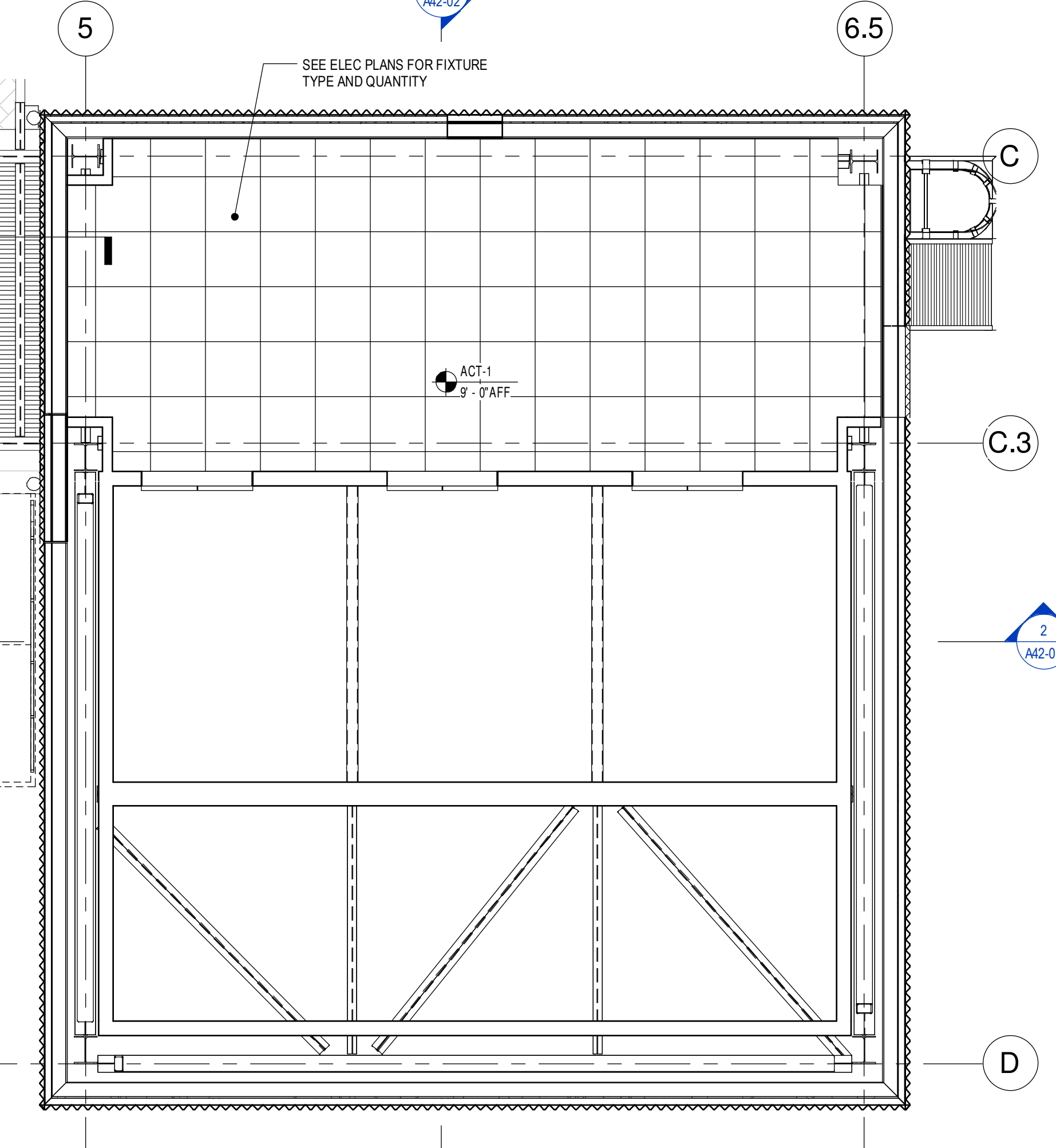
5 HOISTWAY - HELIPAD
 1/4" = 1'-0"



4 HOISTWAY - ROOF
 1/4" = 1'-0"



7 HOISTWAY - HELIPAD RCP
 1/4" = 1'-0"



6 HOISTWAY - ROOF RCP
 1/4" = 1'-0"