

CONSULTANTS

CVL / LANDSCAPE ARCHITECT
Sebago Technics
75 John Roberts Road, Suite
1A, South Portland ME 04106

STRUCTURAL ENG. BUILDING ENVELOPE CONSULTANT
Stinson Gumpertz & Hager Inc.
41 Seyon Street, Building 1, Suite 500,
Waltham MA 02453

MERFP ENGINEER CODE
AKF Group LLC
99 Bedford Street, 2nd Floor, Boston MA 02111

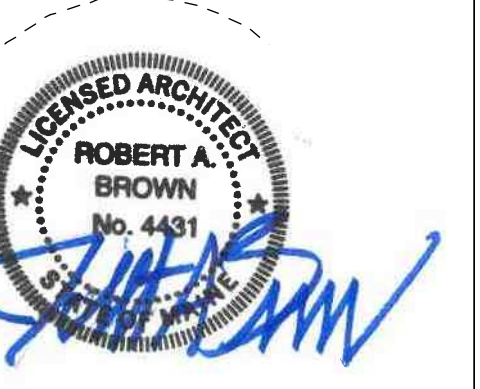
CONSTRUCTION MANAGER
Turner Construction
2 Seaport Lane, Suite 200, Boston MA 02210

ELEVATOR CONSULTANT
VDA (Van Dusen & Associates)
101 Summer Street, 4th Floor, Boston MA
02110

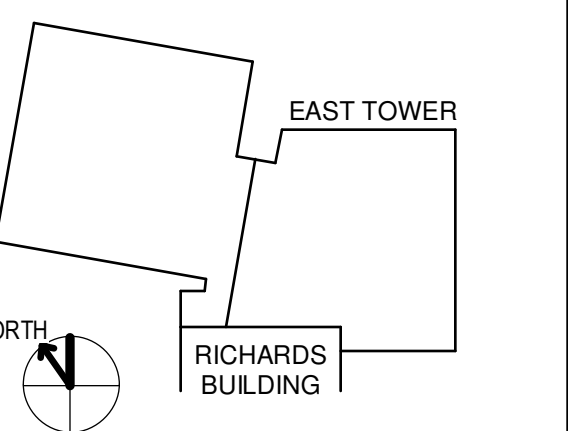
COST ESTIMATOR
D. G. Jones International
3 Baldwin Green Common, Suite 202, Woburn MA 01801

PROJECT TITLE

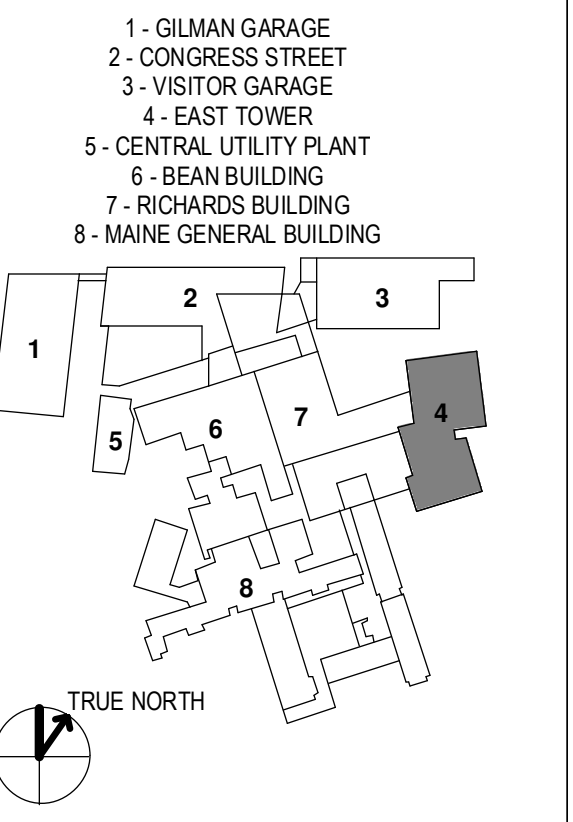
**East Tower 6 & 7
Addition**
22 Bramhall Street
Portland ME 04102



KEY PLANS



OVERALL KEY PLAN



CONSTRUCTION DOCUMENTS
JANUARY 26, 2018

NO	ISSUE	DATE
1	ADDENDUM NO. 1	3/22/18

Job Number: 152181.000
Drawn: TEAM
Checked: JK
Approved: JK

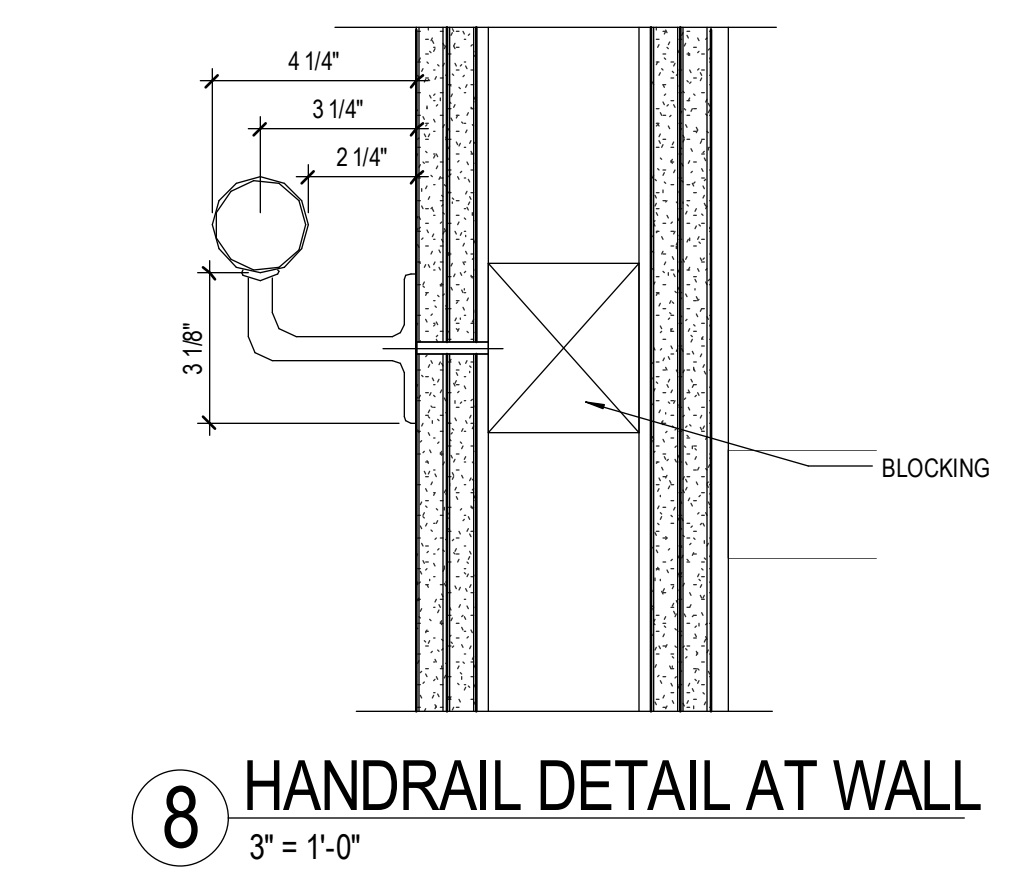
STAIRS - DETAILS

SHEET NUMBER

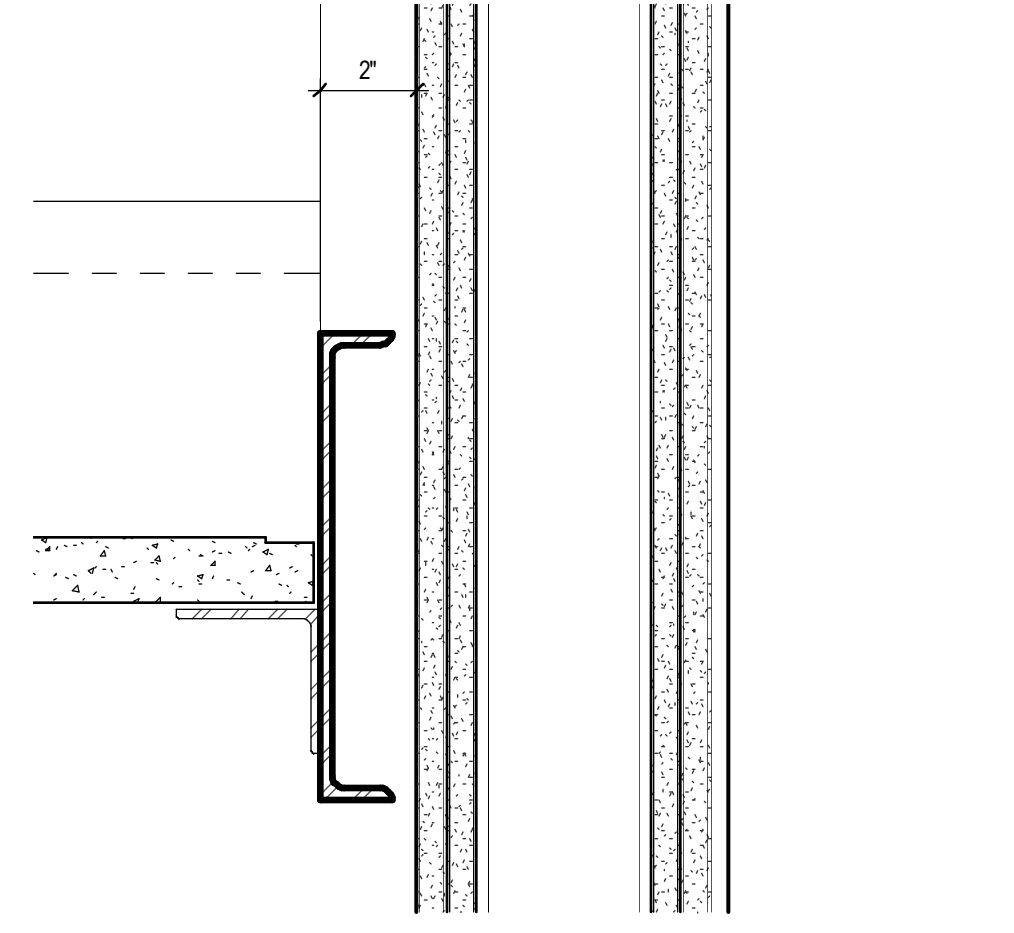
A41-03

KEYNOTES

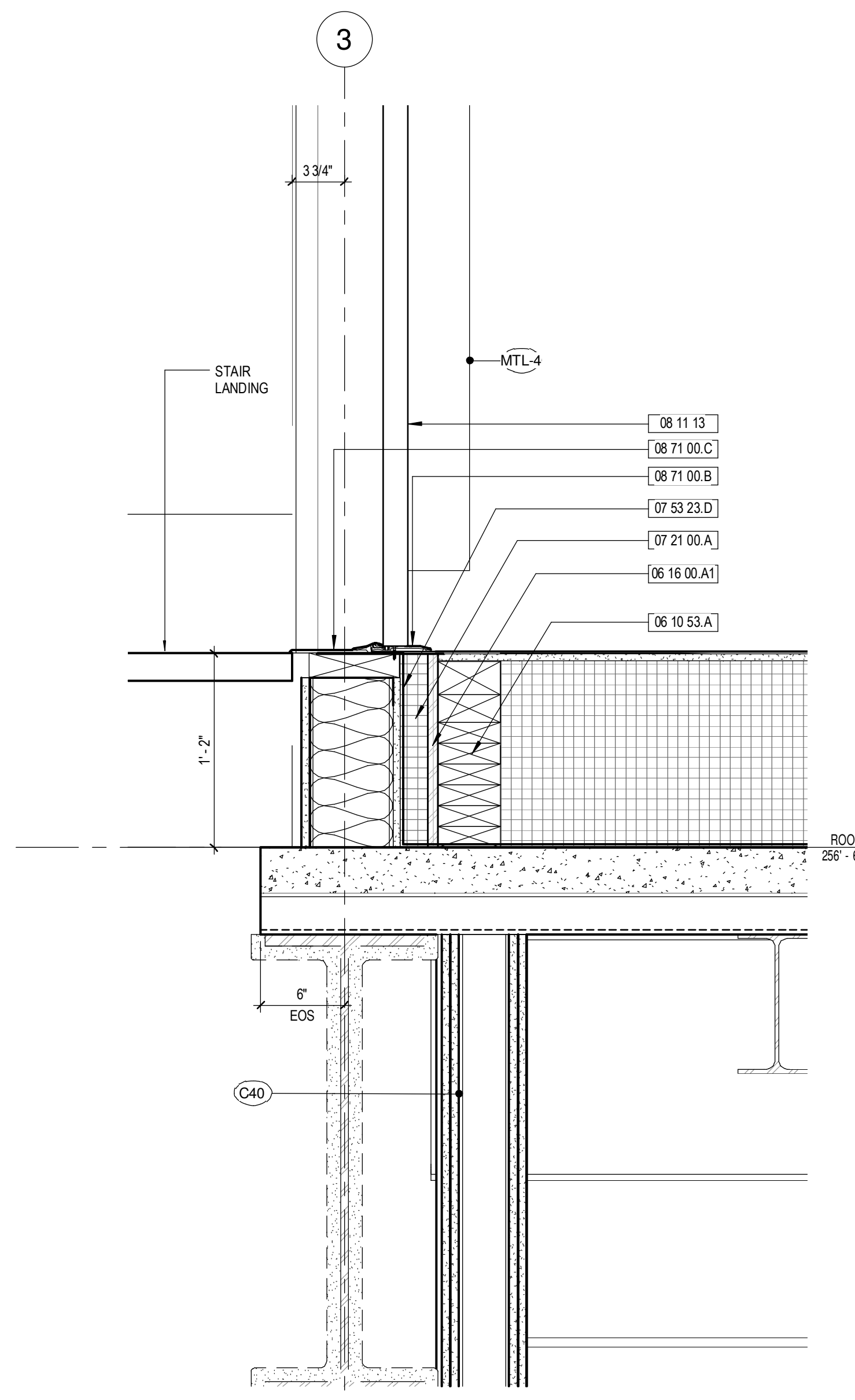
- 06 12 00 A STL BEAM
- 06 40 00 M FIBERGLASS THERMAL CLIP
- 06 50 00 R1 STL PLATE
- 06 10 53 A PRESSURE-TREATED WOOD BLOCKING
- 06 16 00 A1 FIRE-RETARDANT TREATED PLYWOOD
- 07 21 00 A POLYSTYRENE INSUL.
- 07 21 00 E MINERAL WOOL BATT
- 07 42 13 13 FORMED METAL WALL PANELS
- 07 53 23 ETHYLENE-PROPYLENE-DIENE MONOMER (EPDM) ROOFING
- 07 53 23 D VAPOR BARRIER
- 07 81 00 A SPRAYED FIRE-RESISTIVE MATERIAL
- 08 11 13 HOLLOW METAL DOORS AND FRAMES
- 08 71 00 B DOOR THRESHOLD
- 08 71 00 C THRESHOLD PLATE



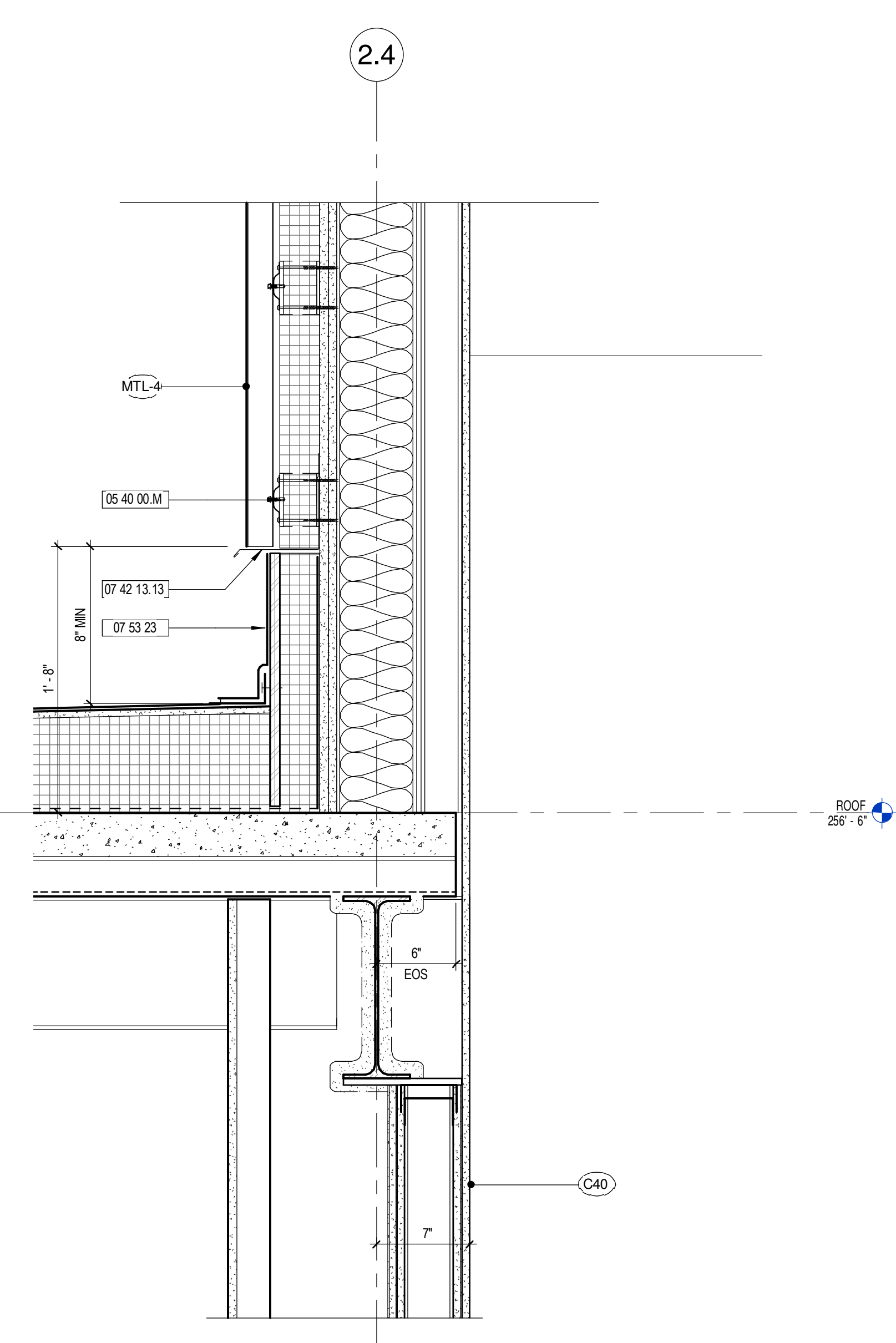
8 HANDRAIL DETAIL AT WALL
3/8" = 1'-0"



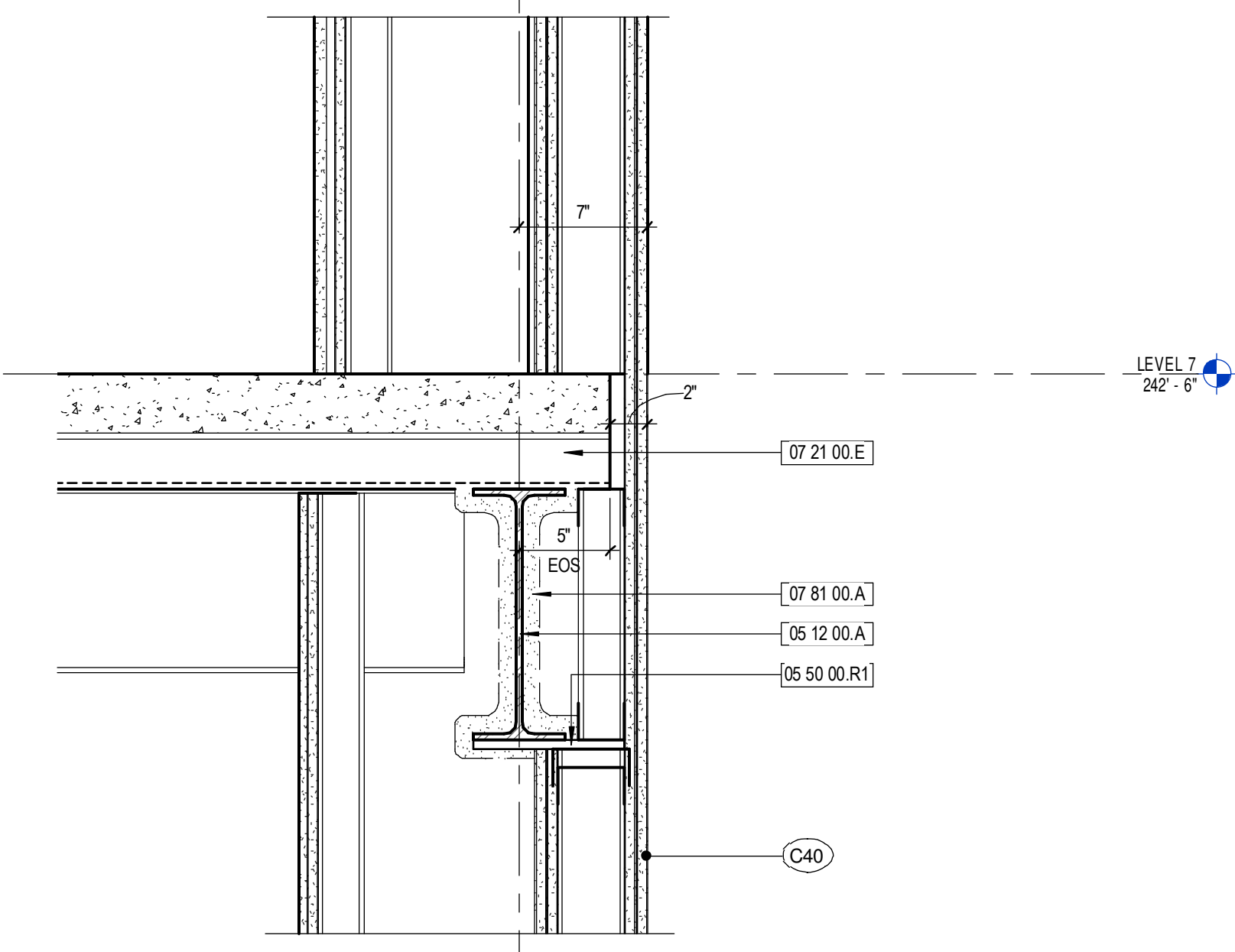
7 STRINGER DETAIL
3/8" = 1'-0"



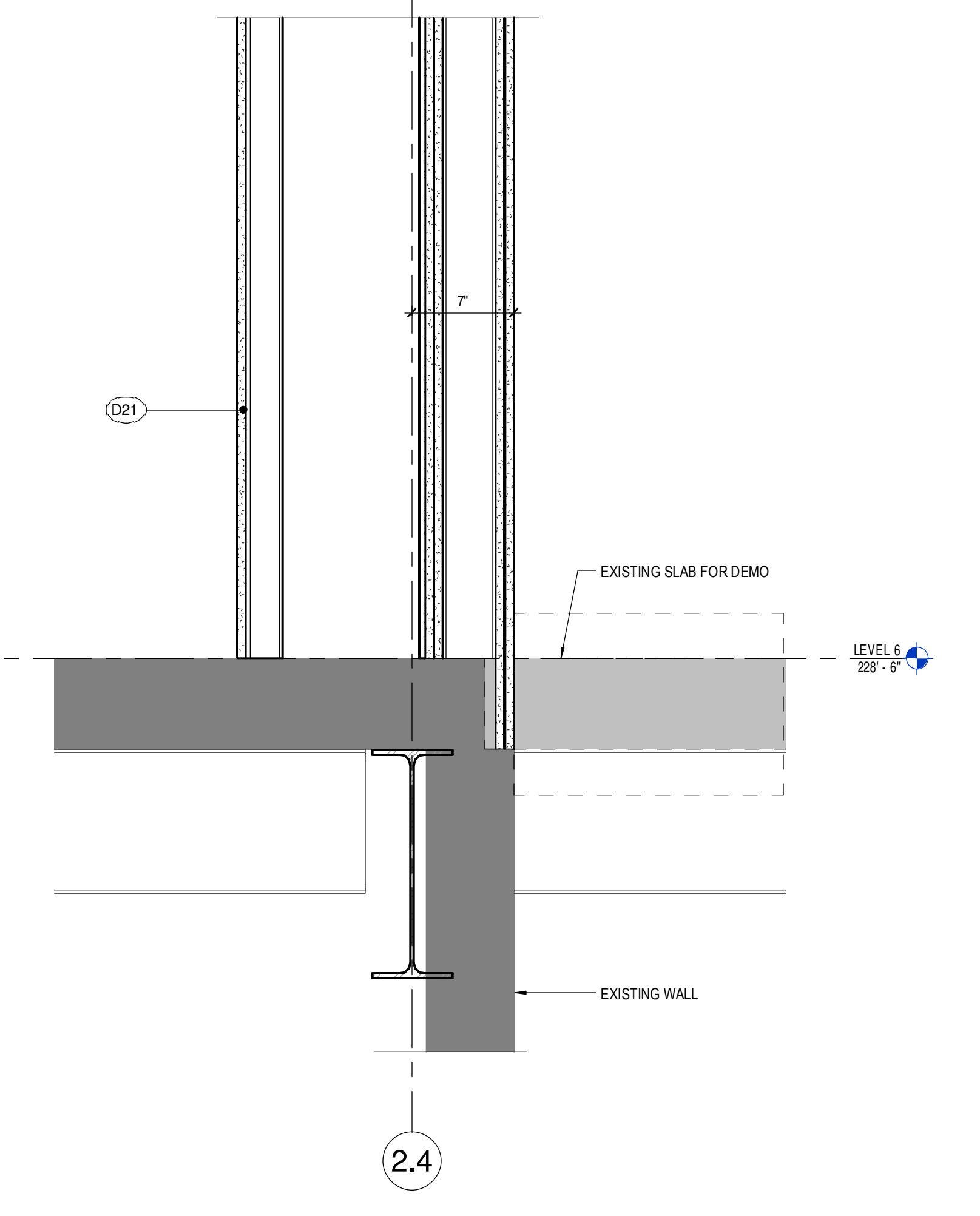
5 STAIR 42 - ROOF @ GRID 3
1 1/2" = 1'-0"



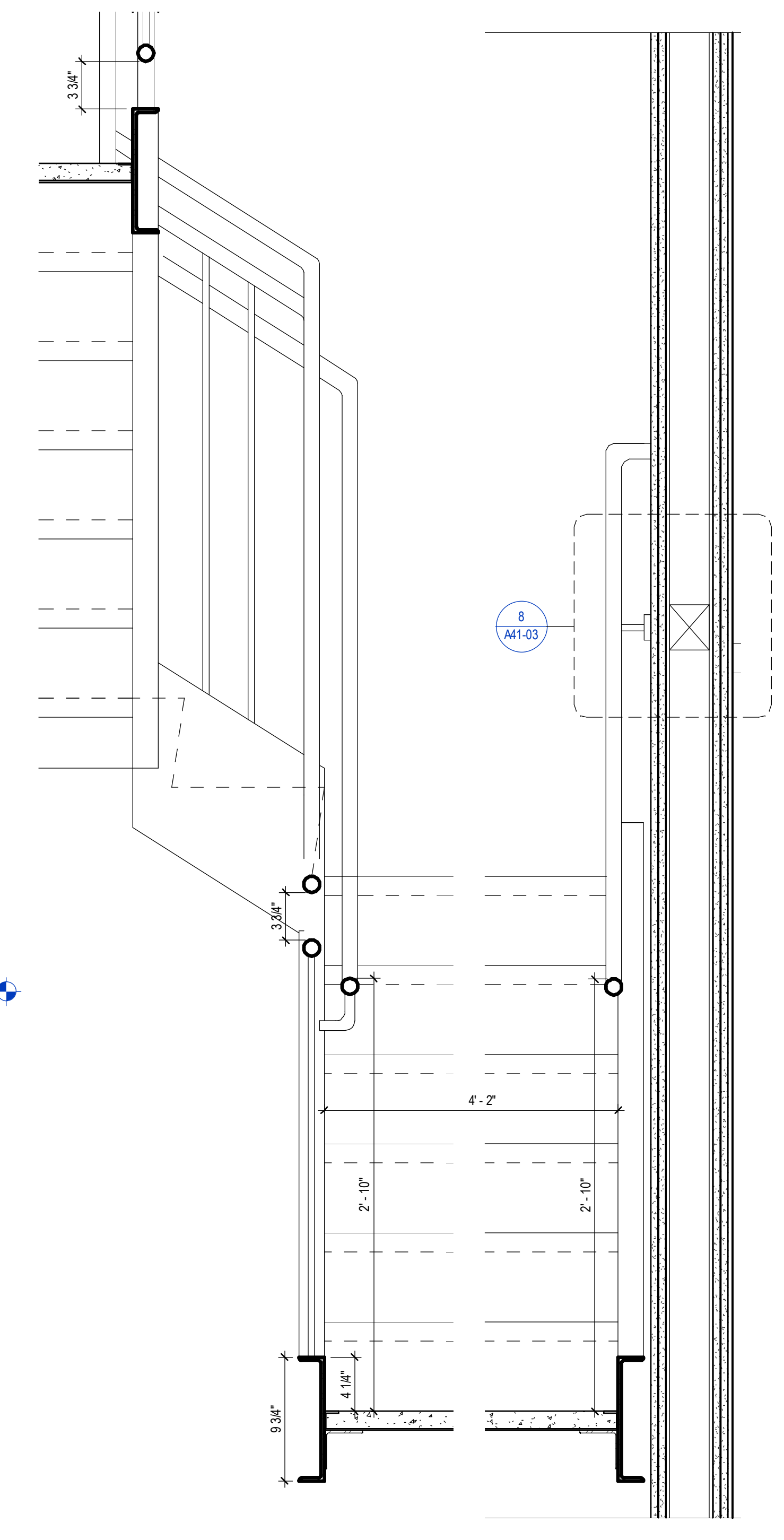
3 STAIR 42 - ROOF @ GRID 2.4
1 1/2" = 1'-0"



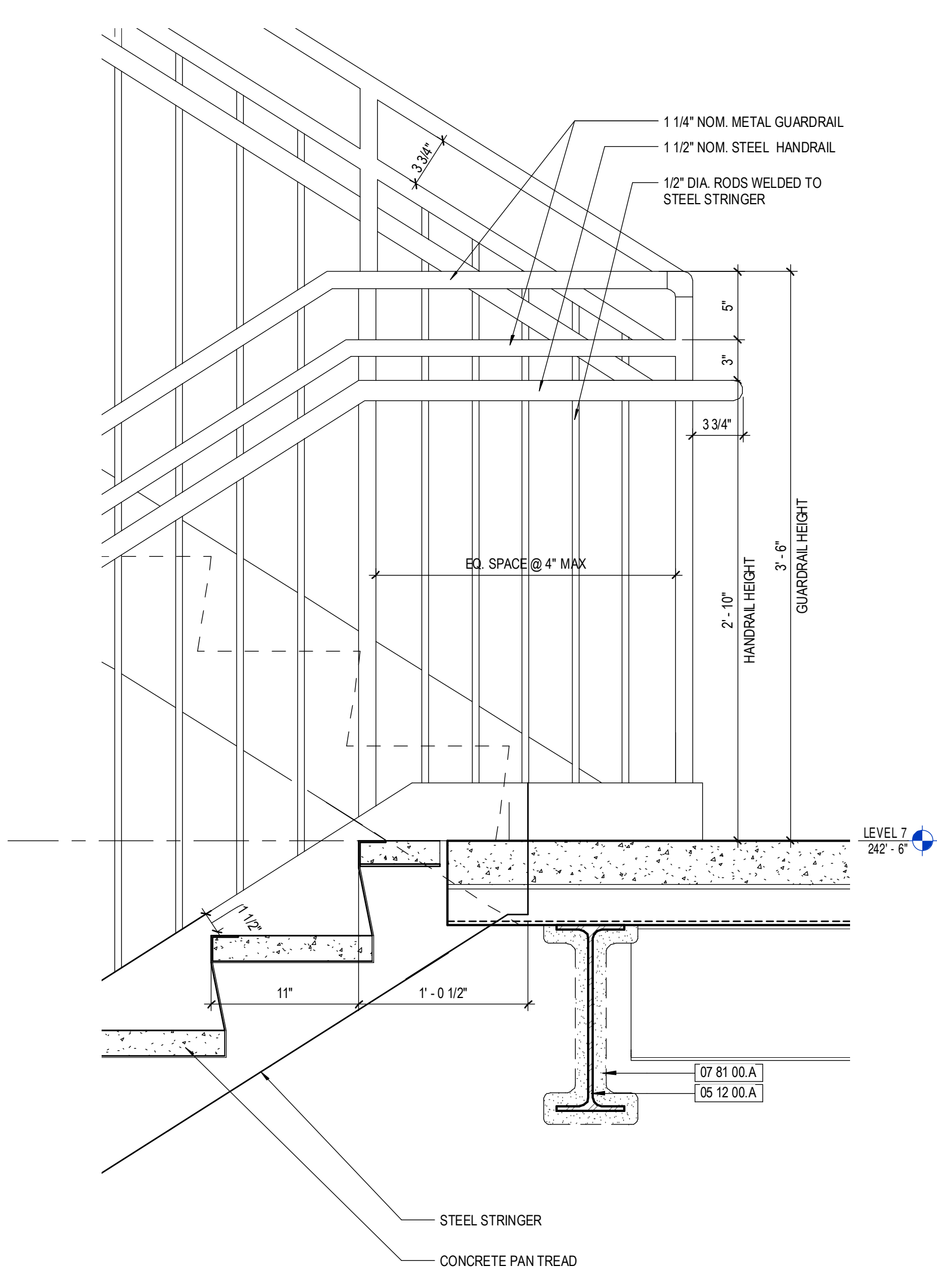
2 STAIR 42 - LEVEL 07
1 1/2" = 1'-0"



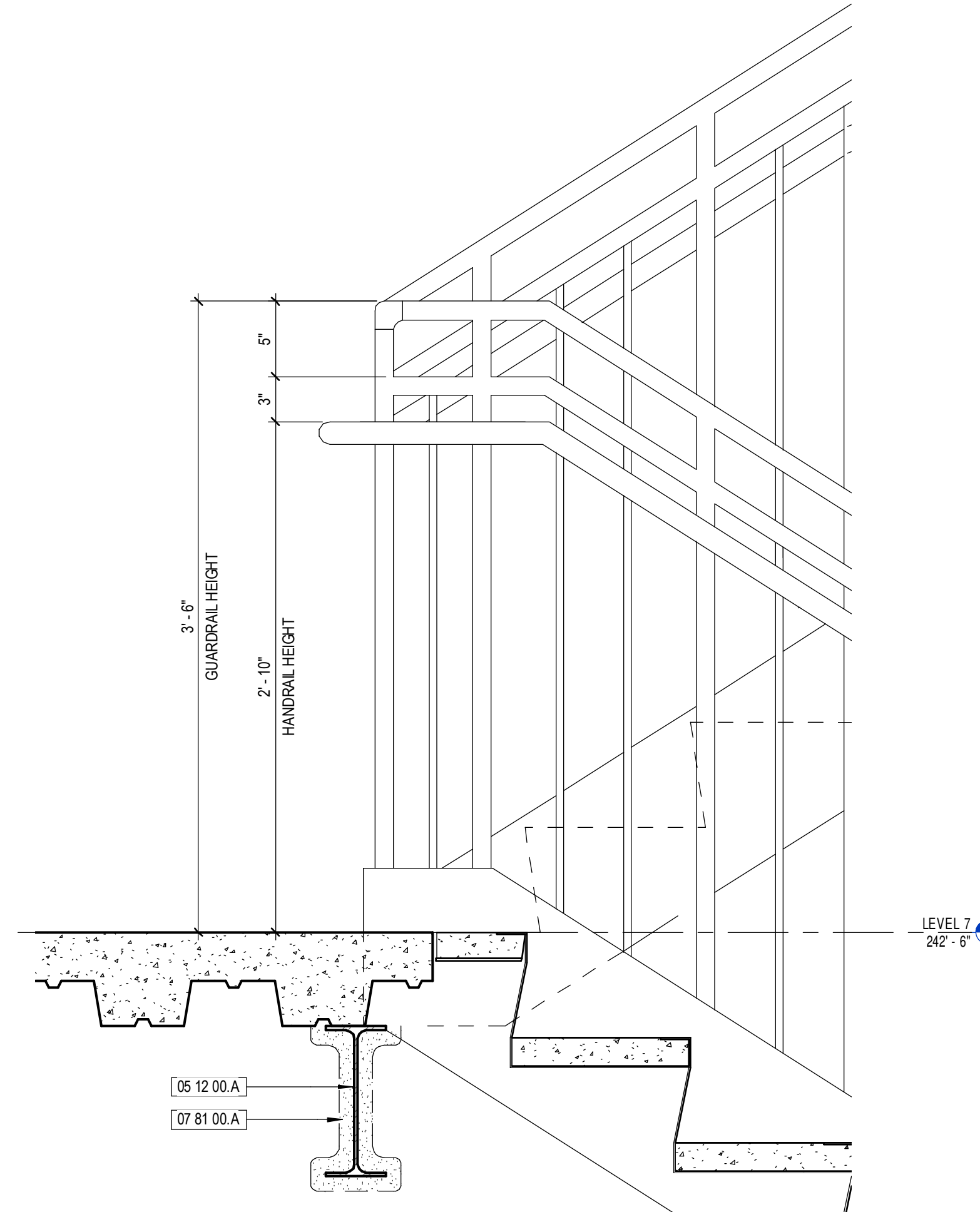
1 STAIR 42 - LEVEL 06
1 1/2" = 1'-0"



4 STAIR 42 - STAIR CROSS SECTION
1 1/2" = 1'-0"



9 STAIR 1 - @ LANDING LEVEL 07
1 1/2" = 1'-0"



6 STAIR 43 - @ LANDING LEVEL
1 1/2" = 1'-0"